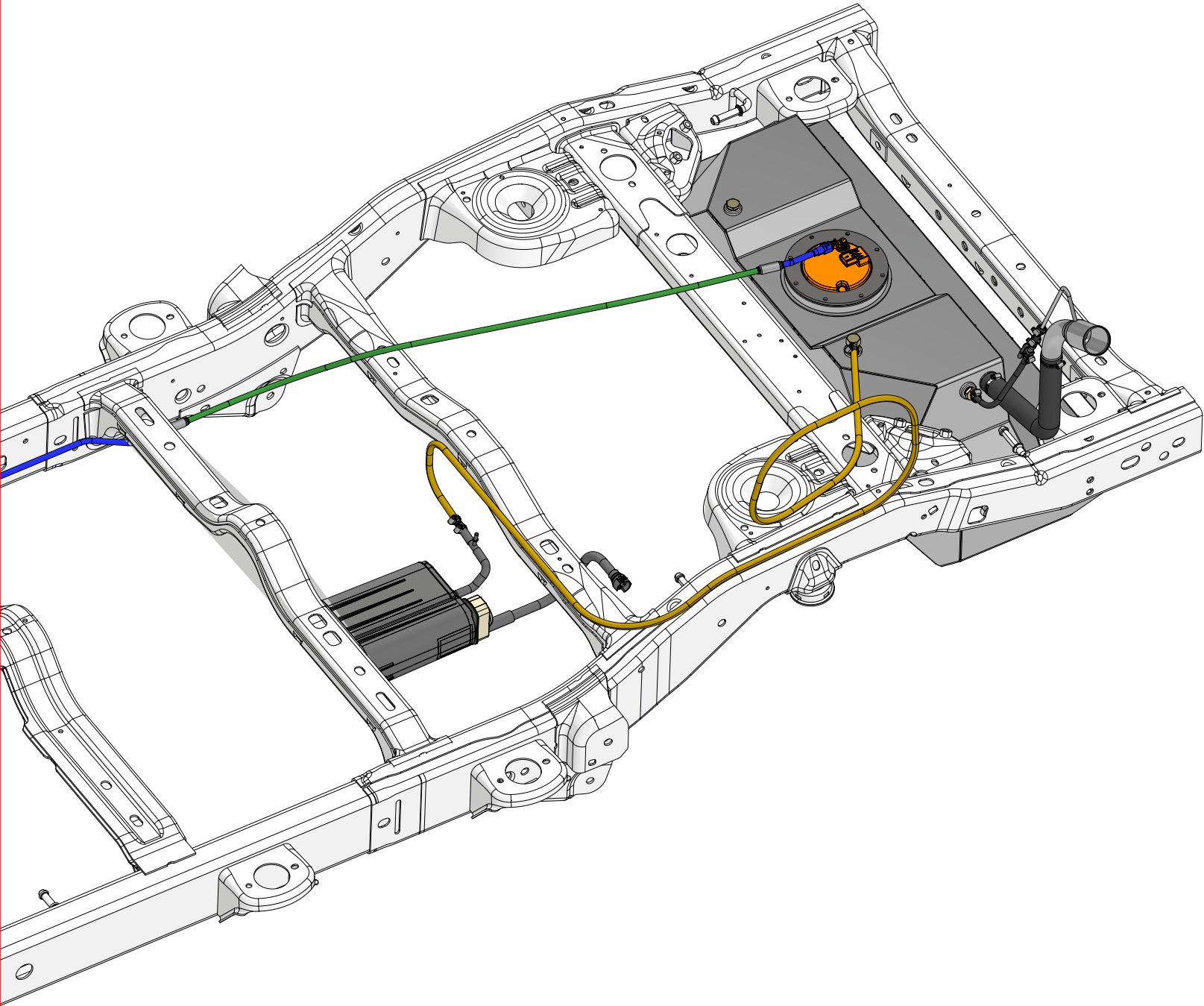
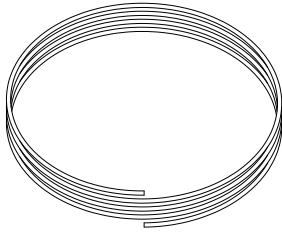


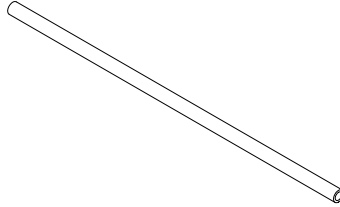
MB5034 - Assembly JKU Fuel Line & EVAP Modification**Jeep JKU Fuel Line & EVAP Modification**

These instructions are compatible with Jeep JKU 2007 thru 2011 with that factory year of EVAP Canister & factory EVAP hoses. These instructions show you how to make modifications to your EVAP, fuel lines & 12 volt electrical to be compatible with our MB5032 Jeep JKU Rear Aluminum Tank System or similar aftermarket fuel tank.

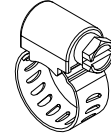


MB5034 - Assembly JKU Fuel Line & EVAP Modification**CONTENTS**

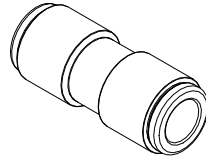
3/8" Nylon Fuel Line
Qty 5 ft



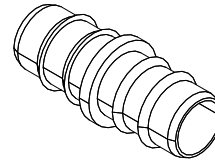
3/8" Rubber Fuel Line
Qty 8 ft



Hose Clamp, 3/8"
Qty 6



Push Connect Union
3/8"
Qty 2



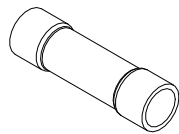
Barbed Splice
1/2"-3/8"
Qty 1



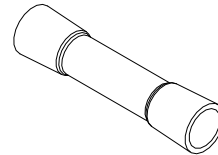
Fuel Pump Extension Wire
12 Ga, 4 ft
Qty 2



Fuel Sender Extension Wire
16 Ga, 4 ft
Qty 2



Electrical Butt Connector
12 Ga to 10 Ga
Qty 4



Electrical Butt Connector
16 Ga to 14 Ga
Qty 4

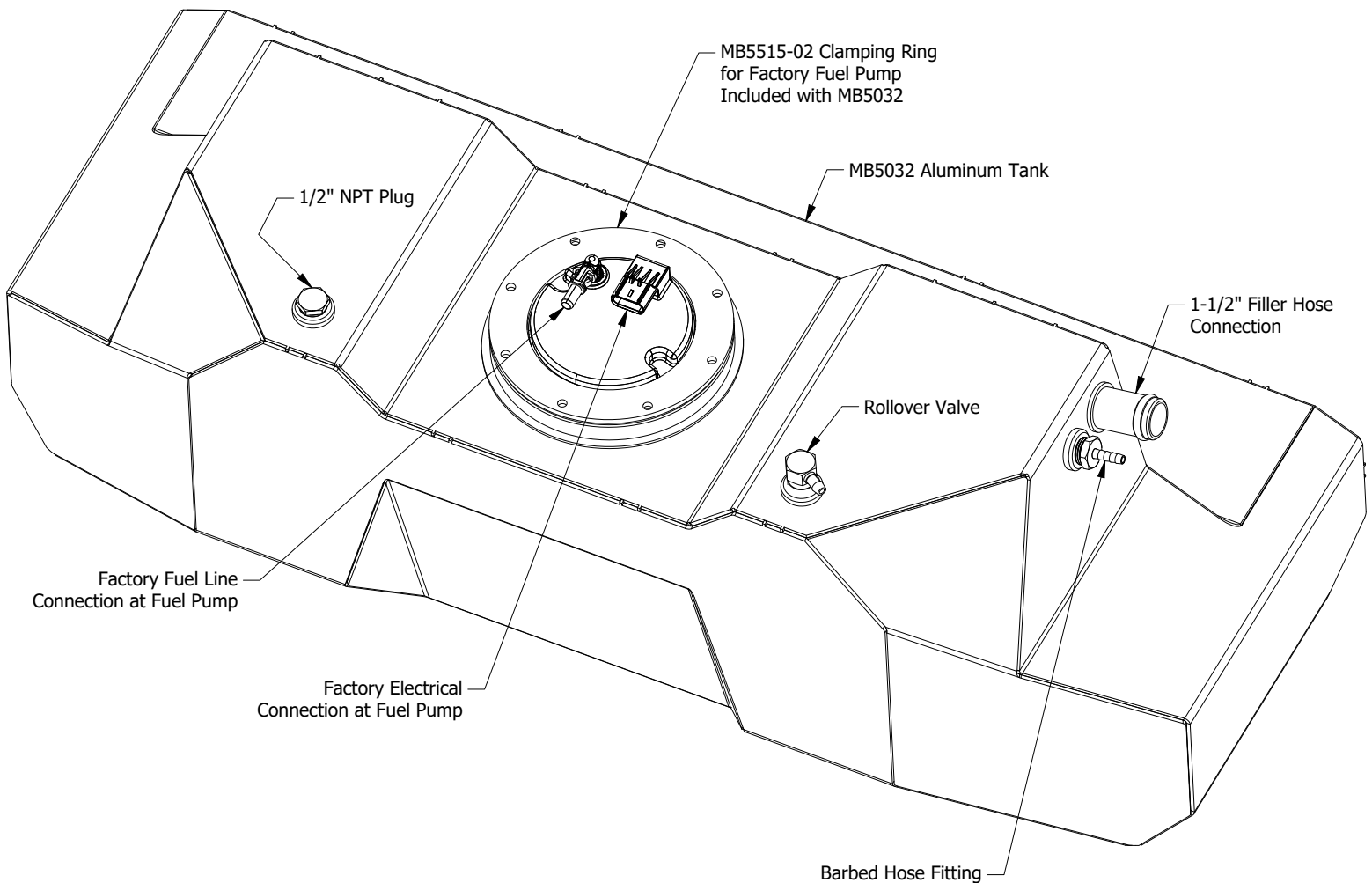
MB5034 - Assembly JKU Fuel Line & EVAP Modification

STEP 1

1. Disconnect negative battery terminal.
2. Identify new tank connections. See below for MB5032 Tank Connections. If using a different tank, identify similar connections & components needed before proceeding.

MB5032 Jeep JKU Rear Aluminum Tank

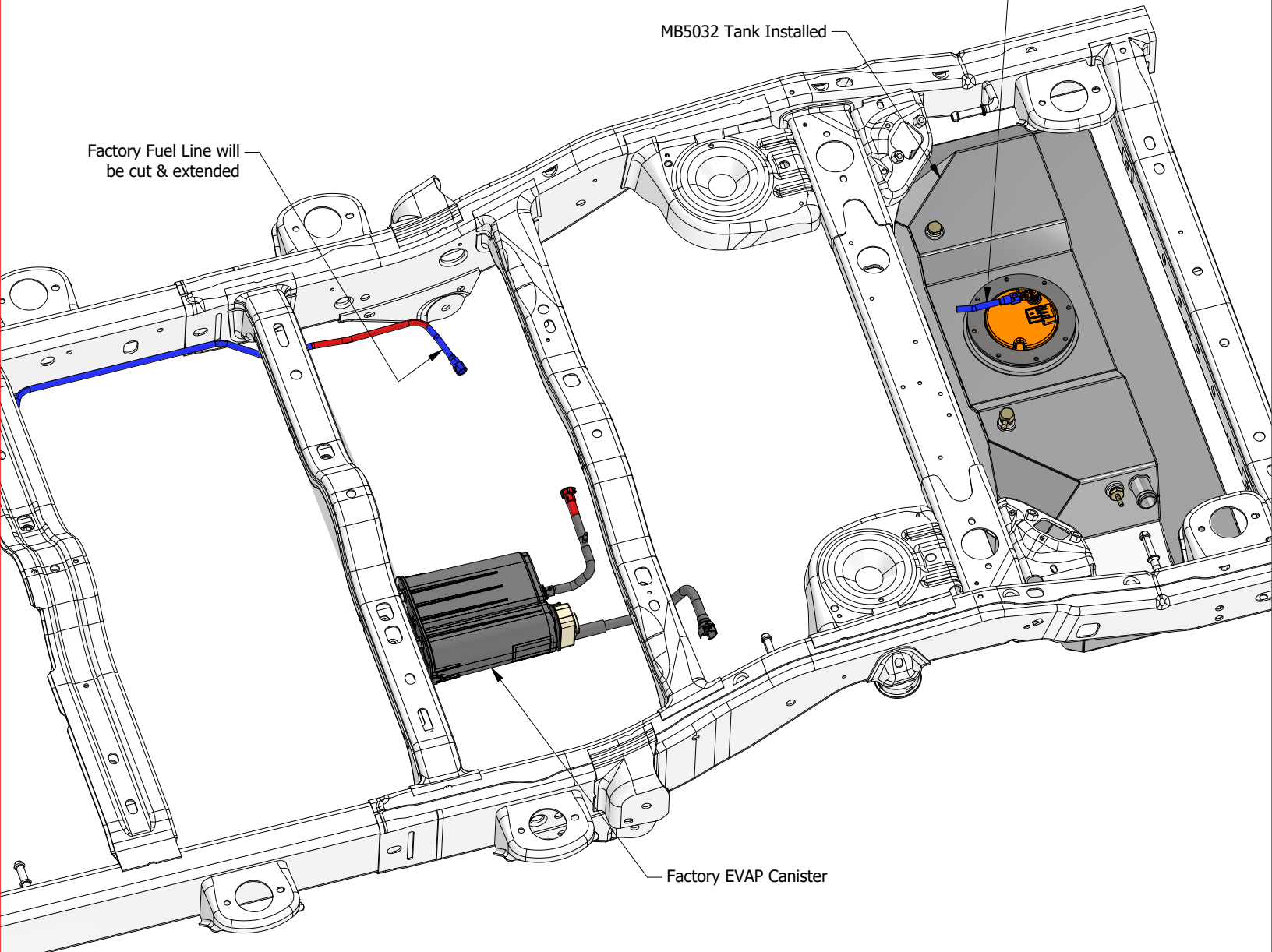
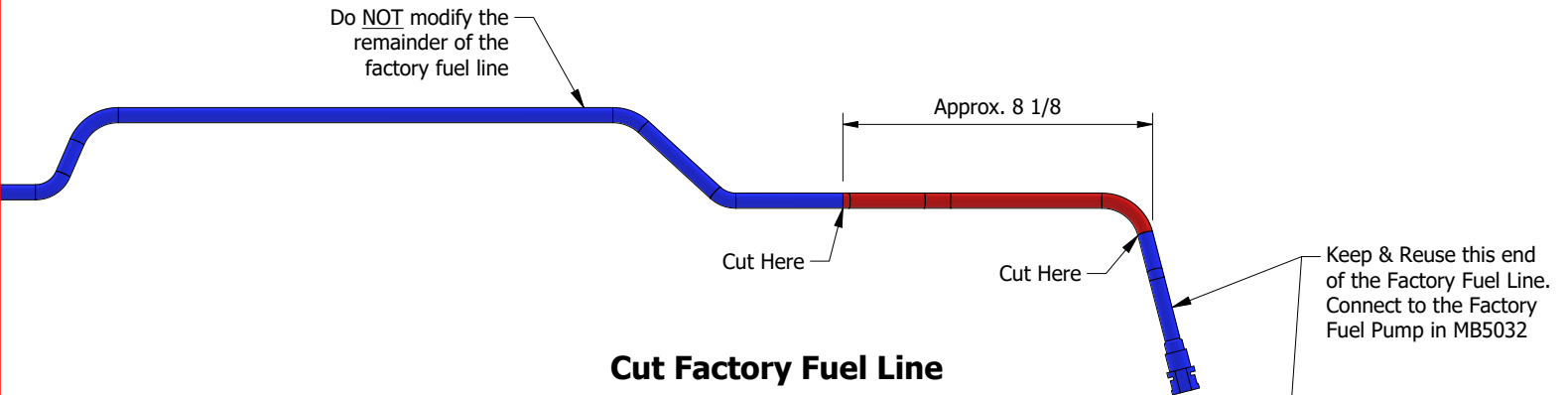
If you have purchased our MB5032 tank kit, install the tank & skid using the assembly instructions provided on our website. After the tank has been installed, you will connect the MB5034 Fuel Line & EVAP Modification kit with the components below.

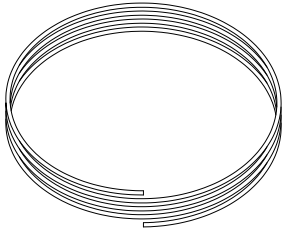


All of these components are included with the MB5032 Tank kit. You can use a different fuel tank other than shown. If you have a different aftermarket or custom rear fuel tank, you can still use these instructions to make similar modifications to your fuel & EVAP system.

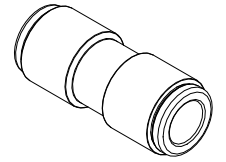
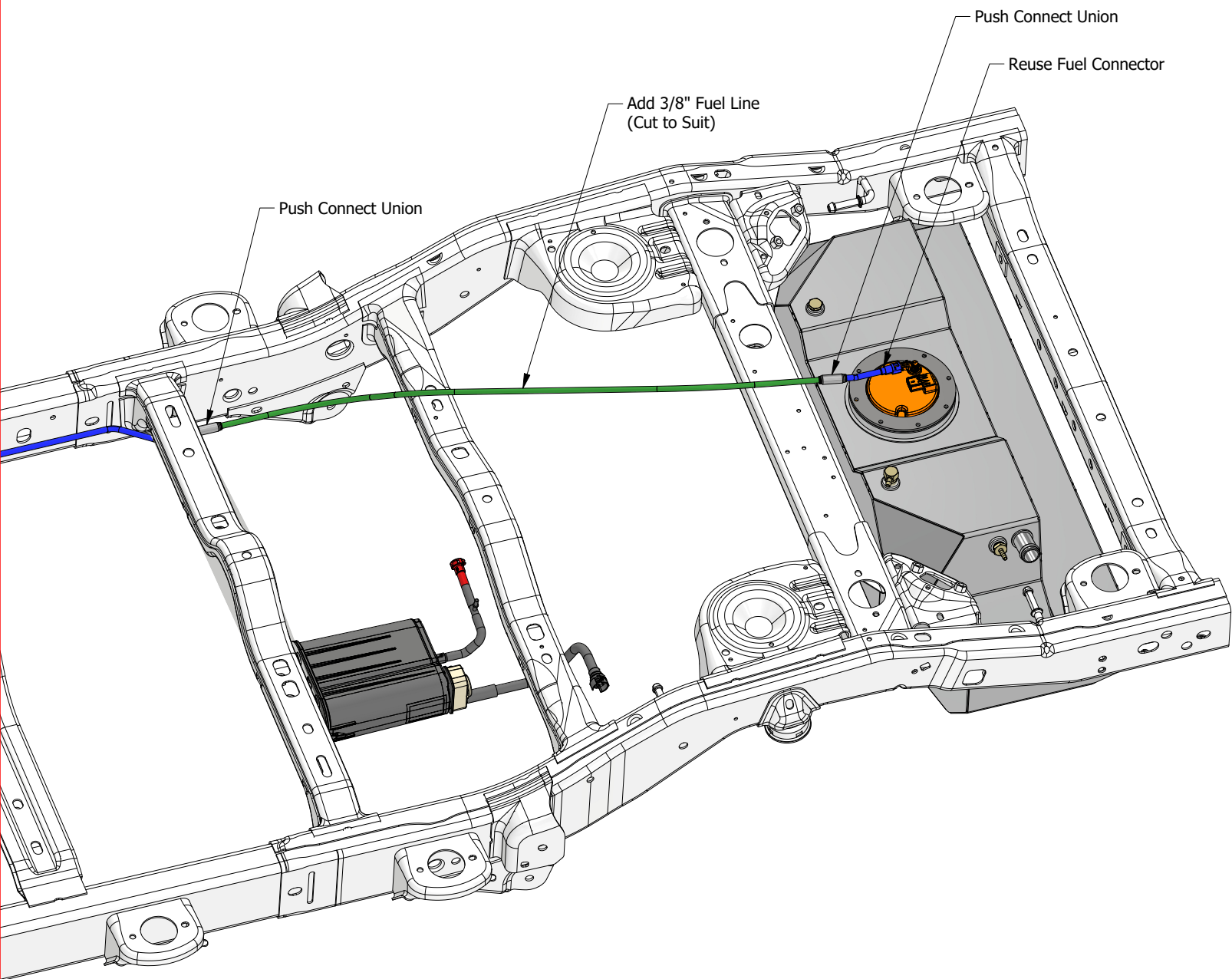
MB5034 - Assembly JKU Fuel Line & EVAP Modification

**STEP 2
CUT FACTORY FUEL LINE**



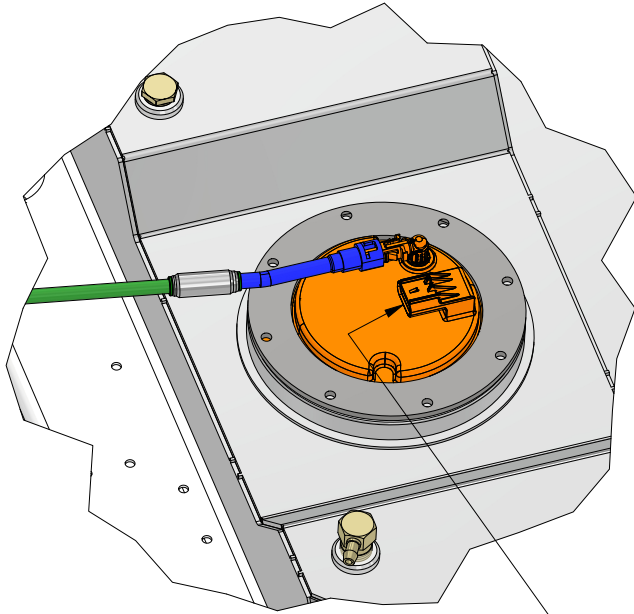
MB5034 - Assembly JKU Fuel Line & EVAP Modification**STEP 3
EXTEND FUEL LINE****3/8" Nylon Fuel Line
Qty 5 ft**

Install a Push Connect Union at the Factory Fuel Line cut location. Connect 3/8" Fuel Line & route to the rear tank location. Cut 3/8" fuel line to suit. Install a Push Connect Union to join fuel line to Factory Pump. Secure fuel line to suit your routing.

**Push Connect Union
Qty 2**

MB5034 - Assembly JKU Fuel Line & EVAP Modification

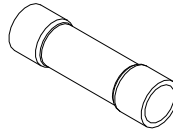
**STEP 4
EXTEND ELECTRICAL TO FUEL PUMP**



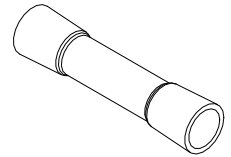
Extend factory wiring to fuel pump using the supplied wires & connectors

Fuel Pump Extension Wire
12 Ga, 4 ft
Qty 2

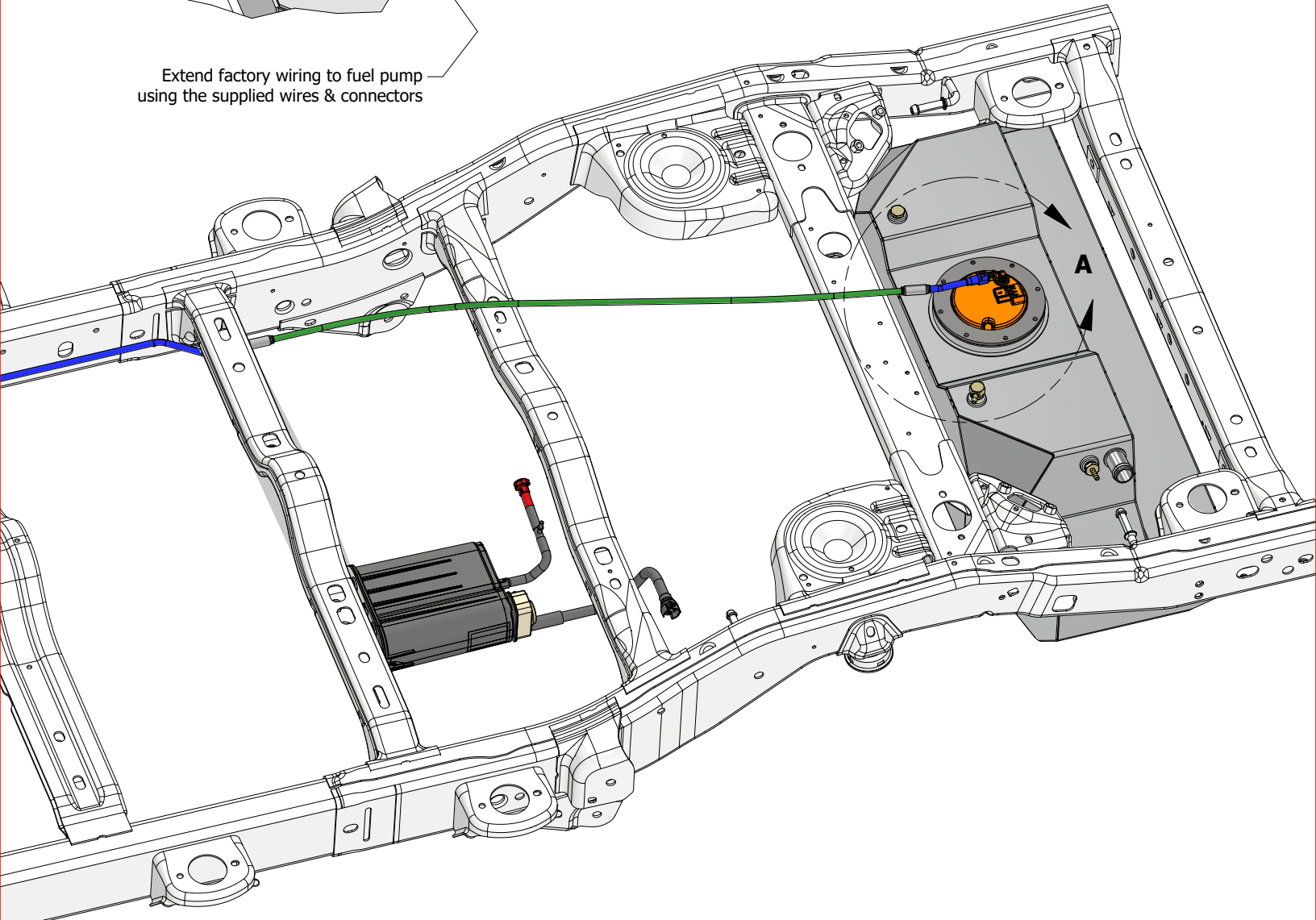
Fuel Sender Extension Wire
16 Ga, 4 ft
Qty 2



Electrical Butt Connector
12 Ga to 10 Ga
Qty 4

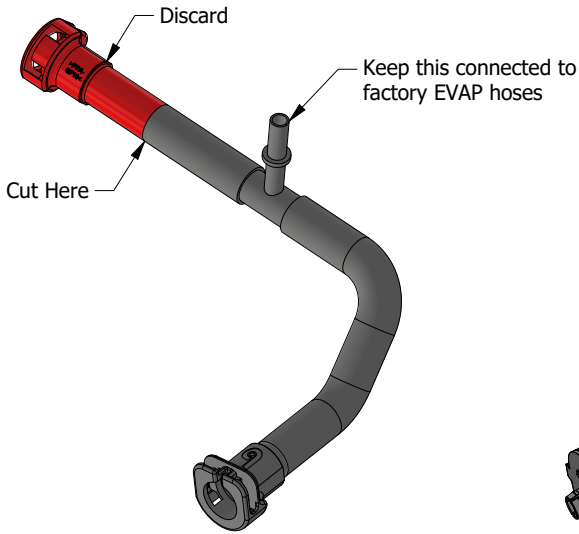


Electrical Butt Connector
16 Ga to 14 Ga
Qty 4

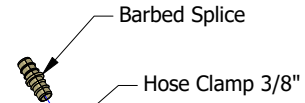


MB5034 - Assembly JKU Fuel Line & EVAP Modification

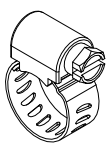
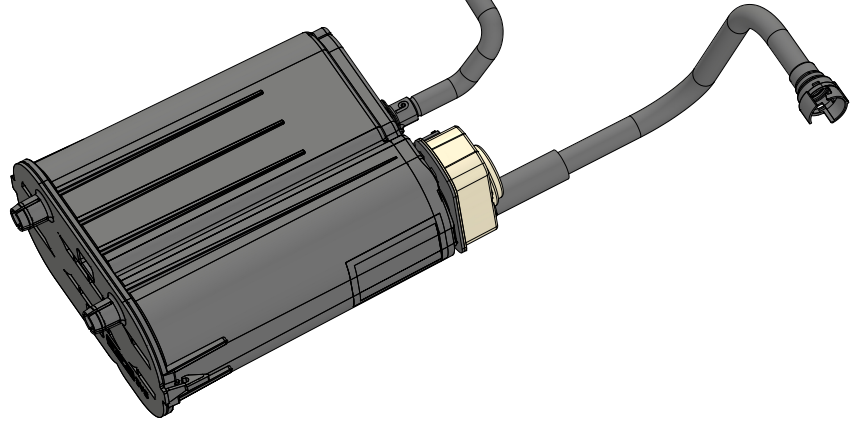
**STEP 5
CUT EVAP HOSE & ADD BARBED SPLICE**



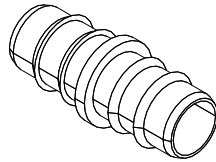
Cut EVAP Hose



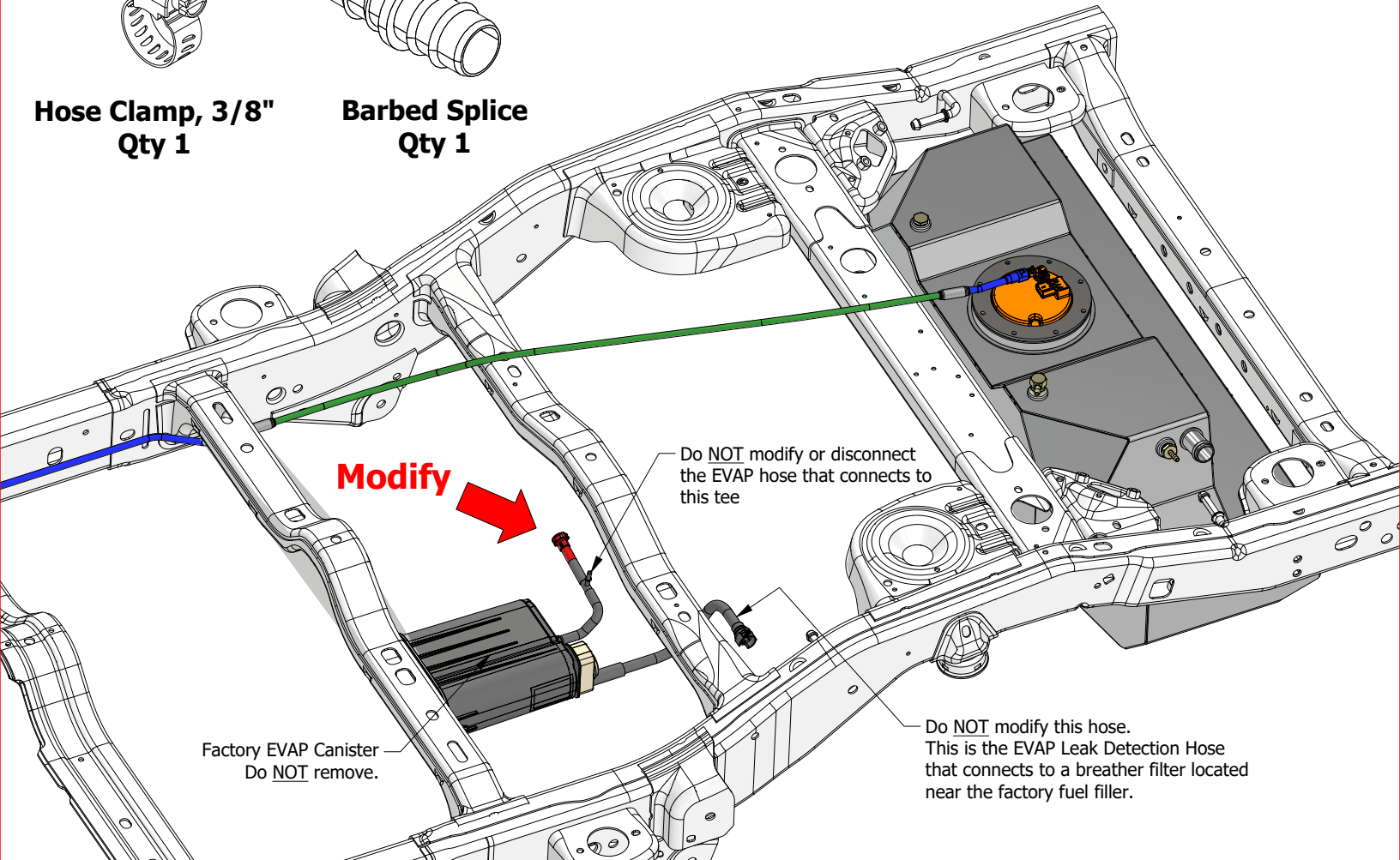
NOTE: This diagram is to show where components are located. Do **NOT** remove the EVAP Canister or EVAP hoses from the vehicle.



Hose Clamp, 3/8\"
Qty 1

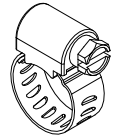
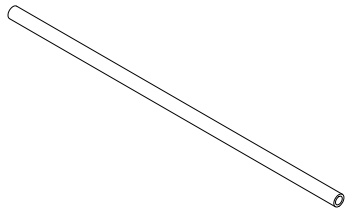
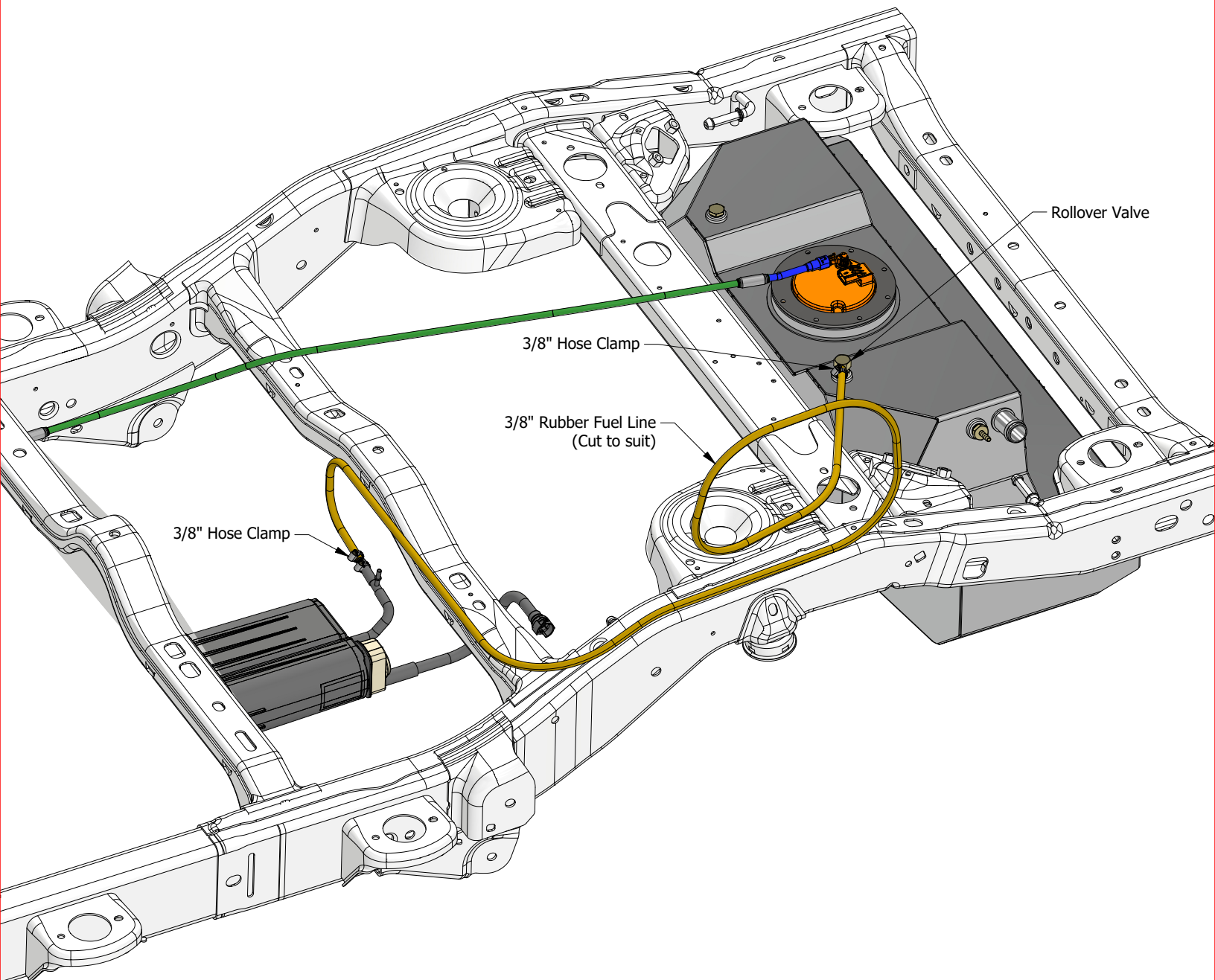


Barbed Splice
Qty 1



MB5034 - Assembly JKU Fuel Line & EVAP Modification**STEP 6
ADD ROLLOVER VENT LINE**

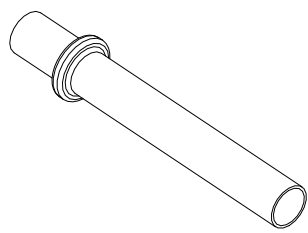
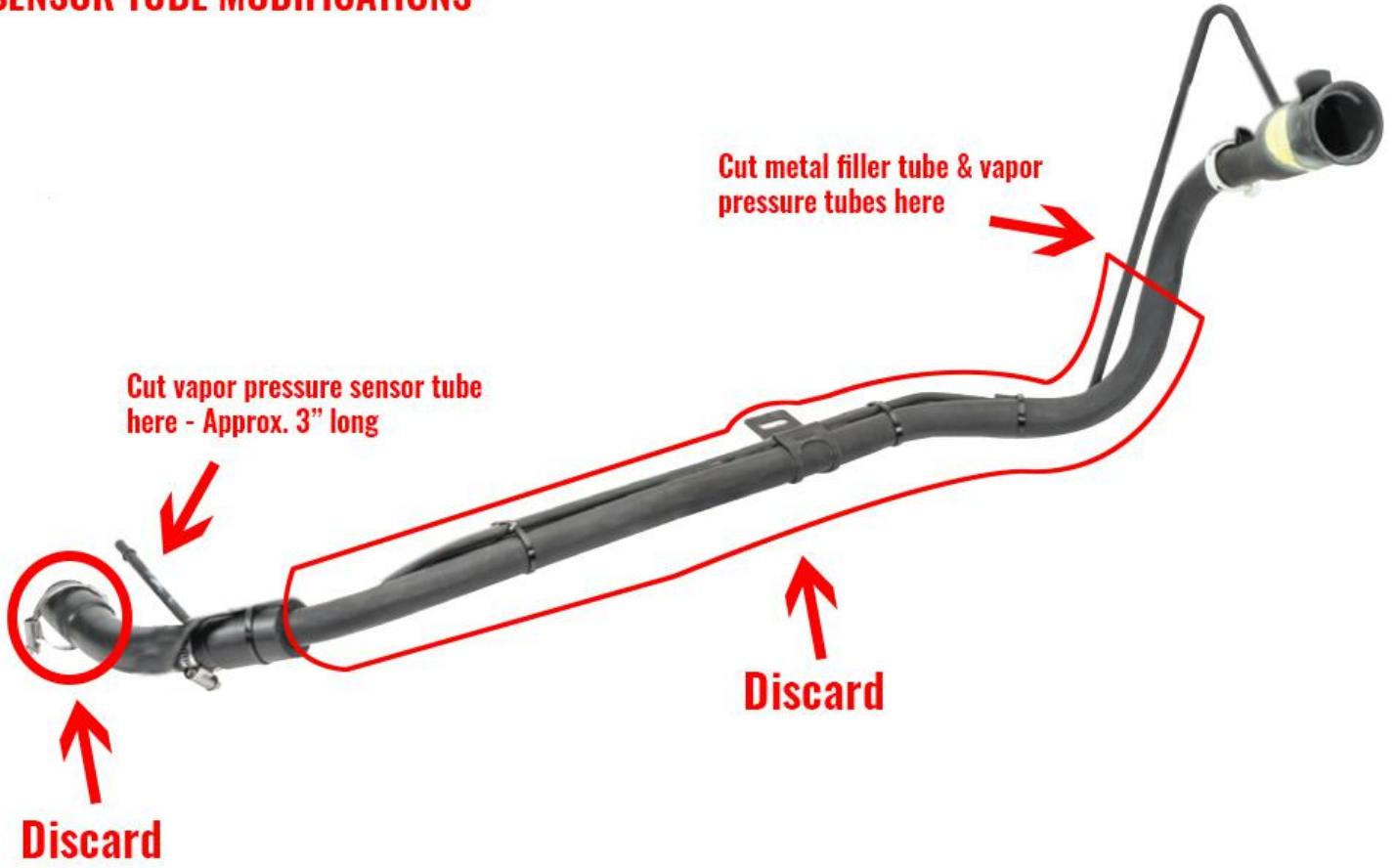
Connect 3/8" Fuel Line to Barbed Splice. Install 3/8" Hose Clamp. Route 3/8" fuel line from EVAP hose to inner fender. Add a loop in the hose. This will provide an air loop for the rollover valve, allow expansion of fuel vapors & prevent fuel entering the EVAP canister. Connect 3/8" fuel line to Rollover valve on tank. Install 3/8" Hose Clamp.

**Hose Clamp, 3/8"**
Qty 2**3/8" Rubber Fuel Line**
Qty 8 ft

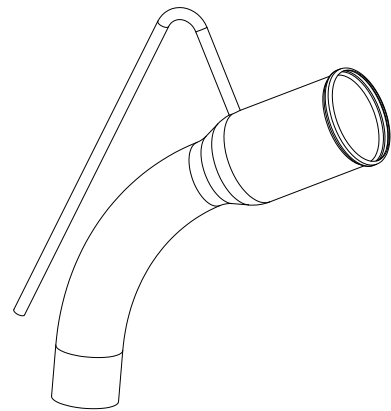
MB5034 - Assembly JKU Fuel Line & EVAP Modification

**STEP 7
MODIFY FILLER NECK**

**FUEL FILLER & VAPOR PRESSURE
SENSOR TUBE MODIFICATIONS**



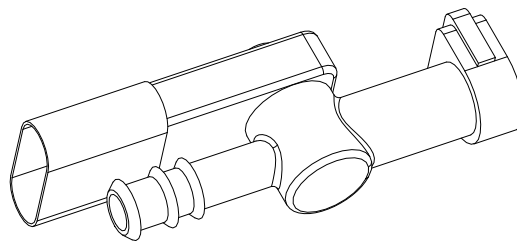
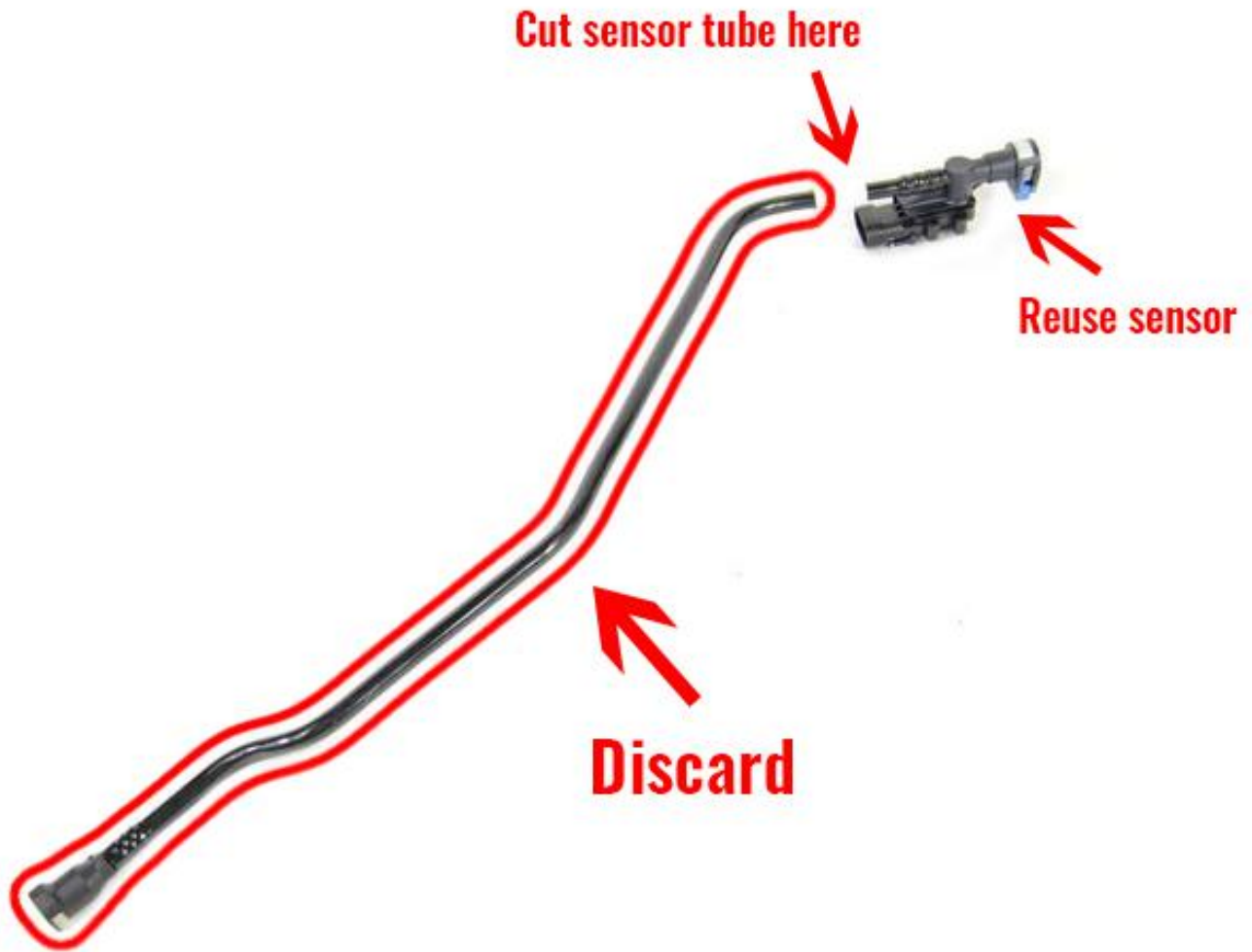
Modified Vapor Pressure Sensor Tube



Modified Filler Neck

MB5034 - Assembly JKU Fuel Line & EVAP Modification

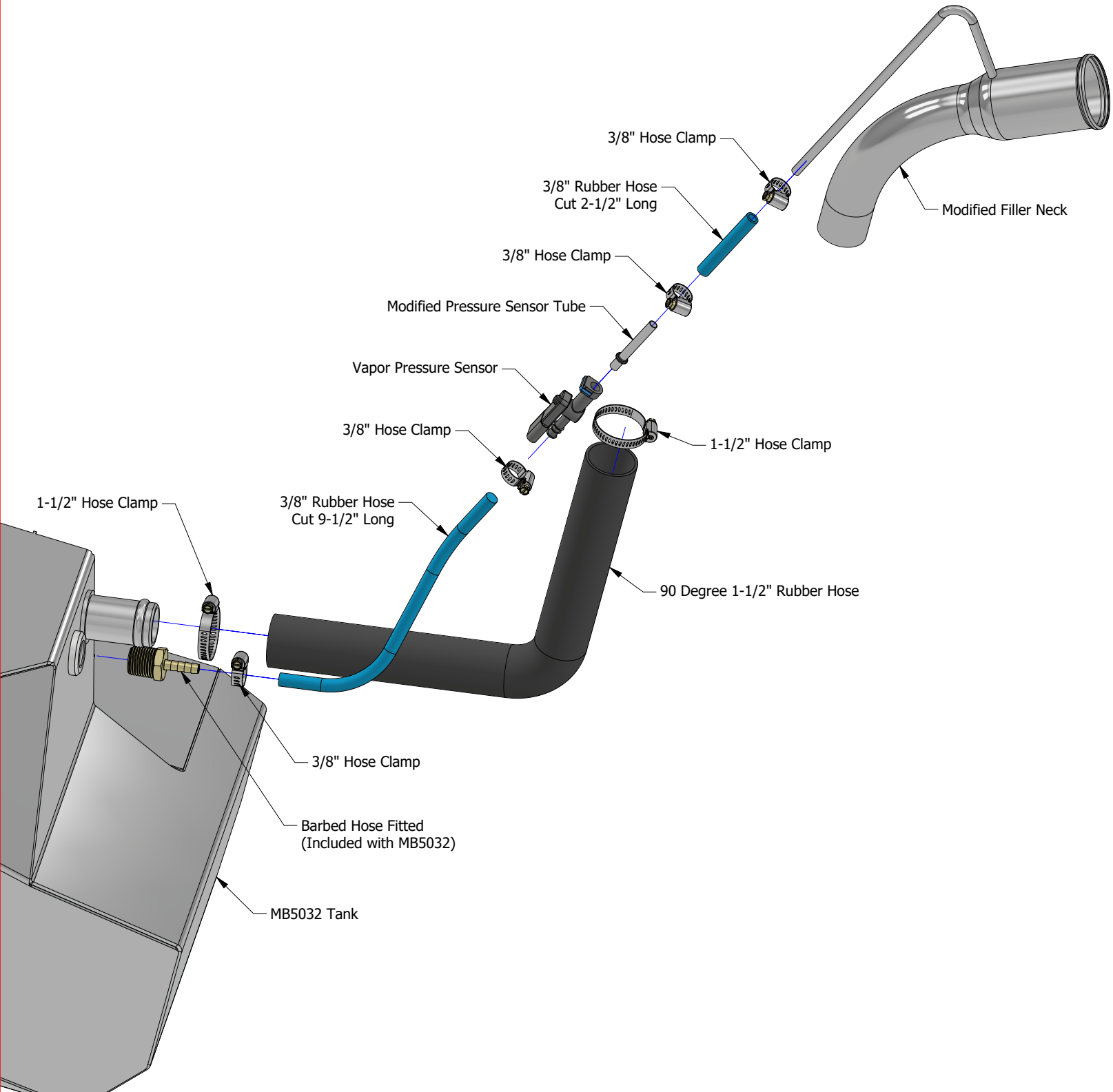
**STEP 8
MODIFY VAPOR PRESSURE SENSOR & HOSE**

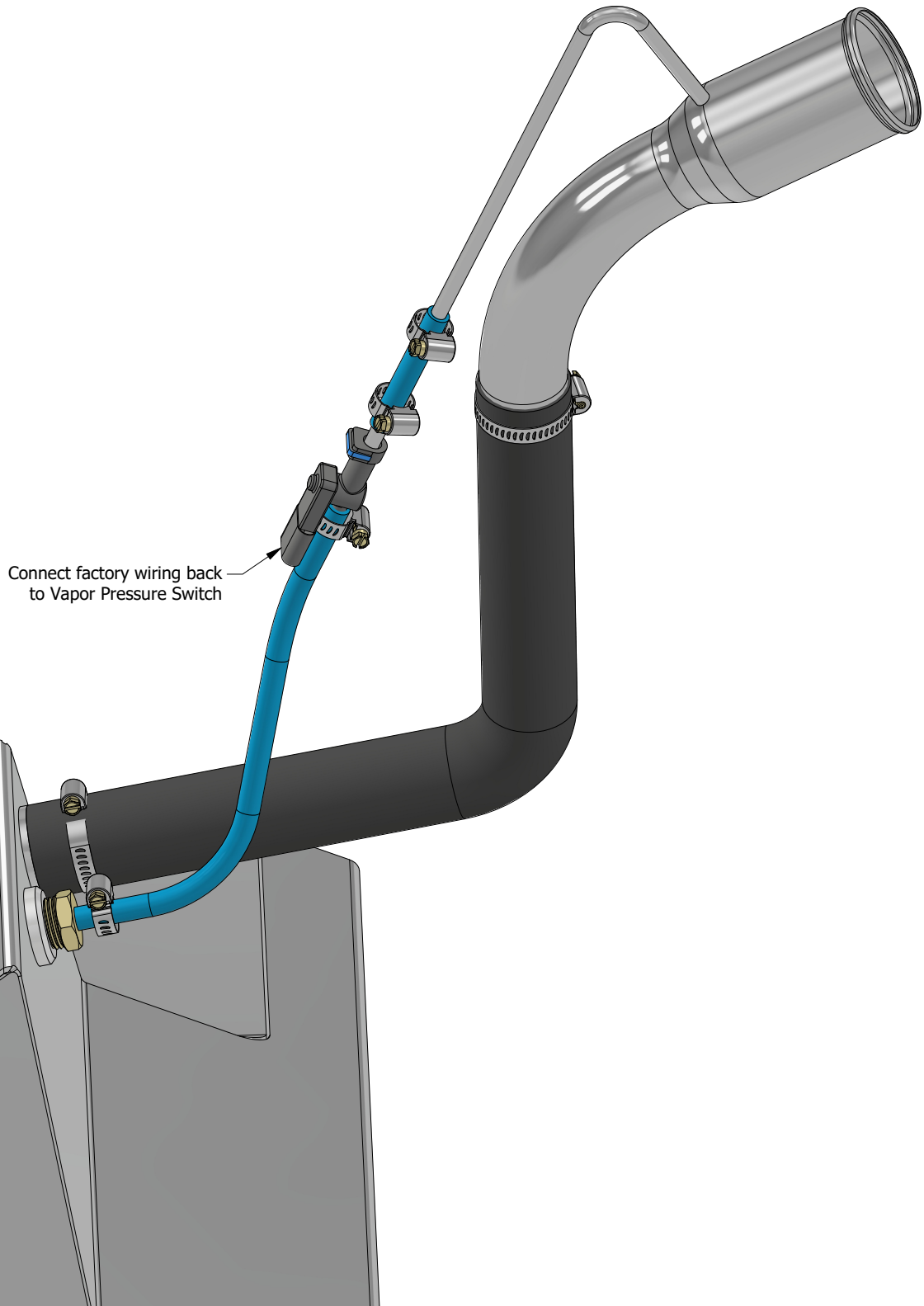


Vapor Pressure Sensor

MB5034 - Assembly JKU Fuel Line & EVAP Modification

**STEP 9
ASSEMBLE FILLER NECK**



MB5034 - Assembly JKU Fuel Line & EVAP Modification**STEP 10
CONNECT FACTORY WIRING TO VAPOR PRESSURE SWITCH**

MB5034 - Assembly JKU Fuel Line & EVAP Modification**STEP 10
CHECK FOR LEAKS**

1. Install factory gas cap to filler neck.
2. Connect negative terminal to battery.
3. Turn ignition to first click so the fuel pump gets 12 volt power. This should pressurize the fuel system. If fuel system is not pressurizing, check your extended 12 volt electrical connections to the fuel pump.
4. After fuel system is pressurizing, check for fuel leaks.
5. After no fuel leaks are confirmed, start the engine.
6. Check for vapor pressure leaks & diagnostic codes. If vapor pressure leaks are detected, first confirm the gas cap is properly sealed, there is fuel in gas tank & that all hose clamps are tightened.

If a DTC engine code is displayed, connect an OBD-II reader to the vehicle & read the DTC code number(s) to pinpoint the exact type of leak detected.