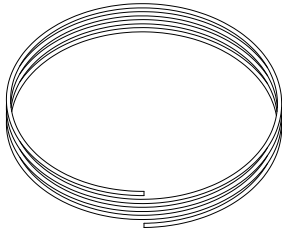
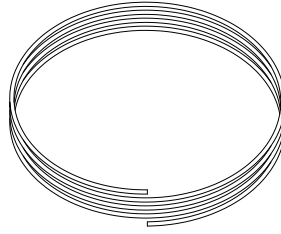
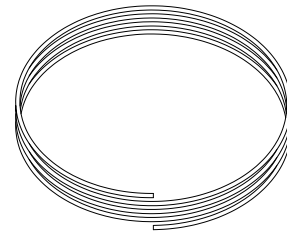


MB5033 - JL EVAP Modification**KIT COMPONENTS**

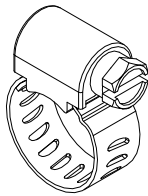
**5/16" FUEL LINE
NYLON
Qty: 3 FT**



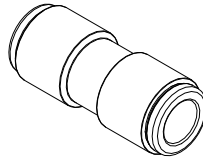
**3/8" FUEL LINE
NYLON
Qty: 4 FT**



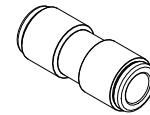
**3/8" FUEL LINE
RUBBER
Qty: 10 FT**



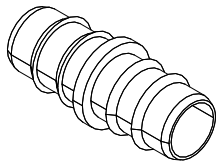
**HOSE CLAMP
1/2"
Qty: 5**



**PUSH CONNECT UNION
3/8"
Qty: 2**



**PUSH CONNECT UNION
5/16"
Qty: 1**



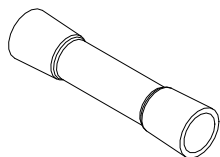
**BARBED SPLICE
1/2"-3/8"
Qty: 2**



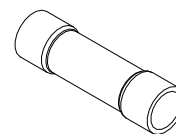
**FUEL PUMP EXTENSION WIRE
12Ga, 36"
Qty: 2**



**FUEL SENDER EXTENSION WIRE
16Ga, 36"
Qty: 2**



**ELECTRICAL BUTT CONECTOR
16Ga - 14Ga
Qty: 4**



**ELECTRICAL BUTT CONNECTOR
12Ga - 10Ga
Qty: 4**