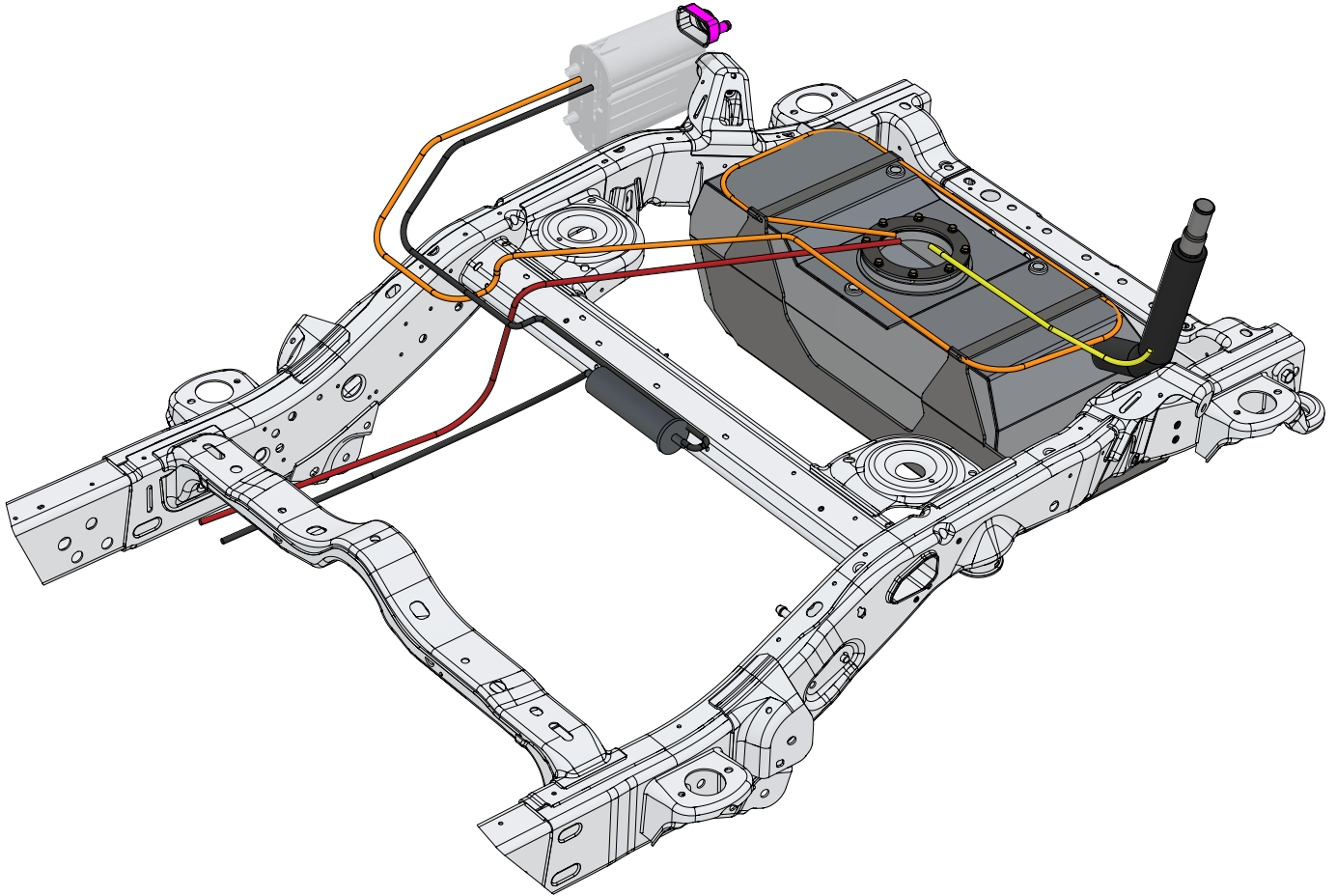


**MB5033 - JL EVAP Modification**

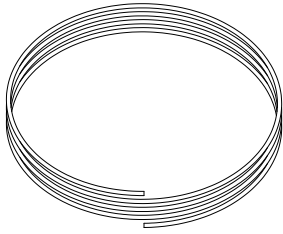
# MB5033 JL EVAP AND FUEL LINE MODIFICATION



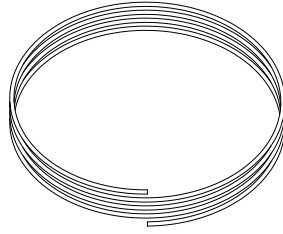
## OFF-ROAD USE ONLY

**MB5033 - JL EVAP Modification**

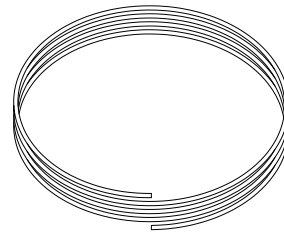
**KIT COMPONENTS**



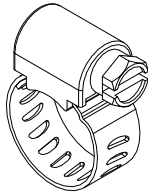
**5/16" FUEL LINE  
NYLON  
Qty: 3 FT**



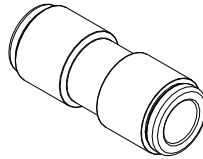
**3/8" FUEL LINE  
NYLON  
Qty: 4 FT**



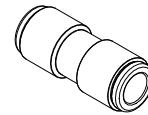
**3/8" FUEL LINE  
RUBBER  
Qty: 10 FT**



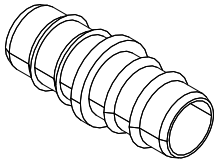
**HOSE CLAMP  
1/2"  
Qty: 5**



**PUSH CONNECT UNION  
3/8"  
Qty: 2**



**PUSH CONNECT UNION  
5/16"  
Qty: 1**



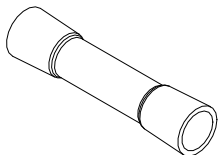
**BARBED SPLICE  
1/2"-3/8"  
Qty: 2**



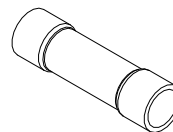
**FUEL PUMP EXTENSION WIRE  
12Ga, 36"  
Qty: 2**



**FUEL SENDER EXTENSION WIRE  
16Ga, 36"  
Qty: 2**



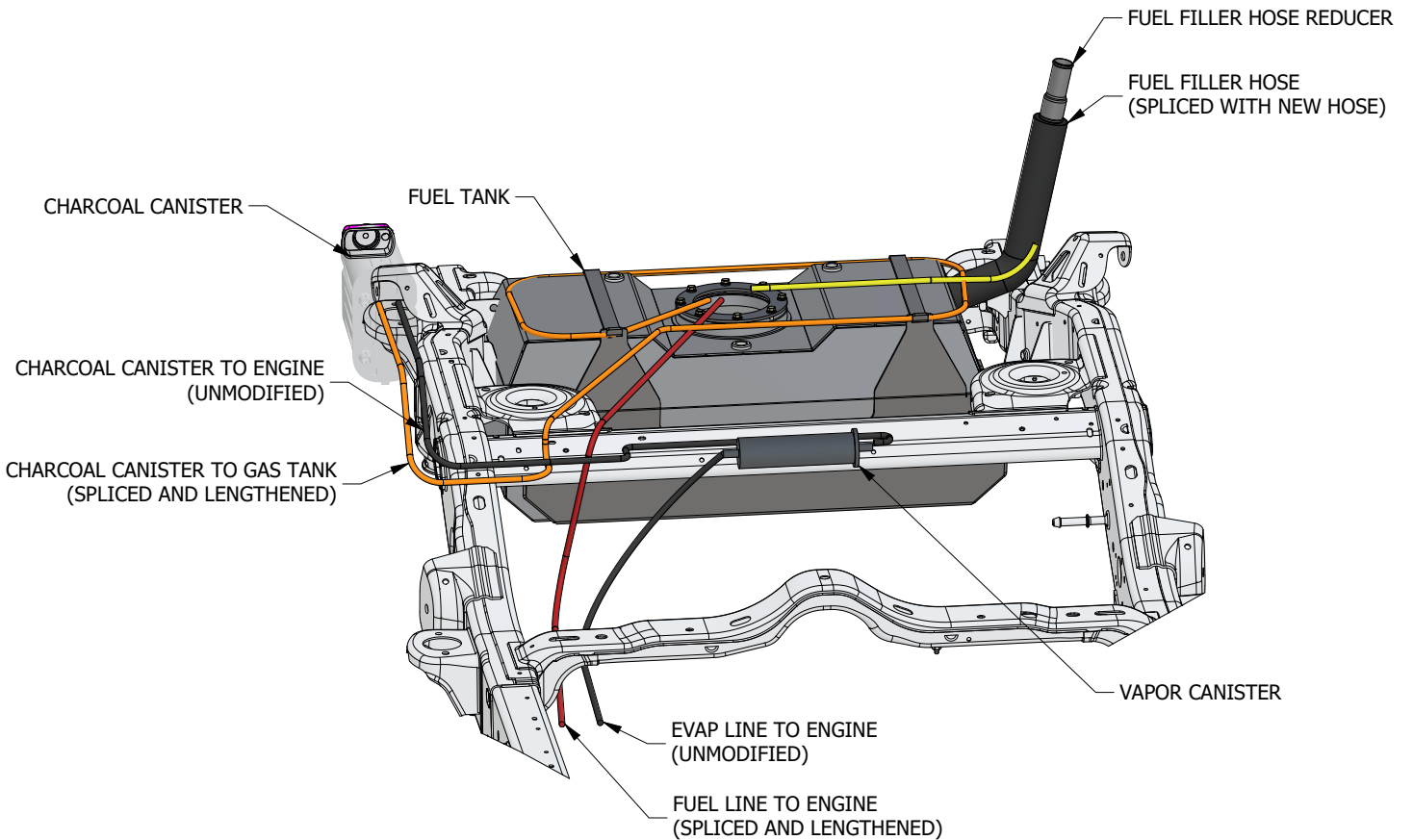
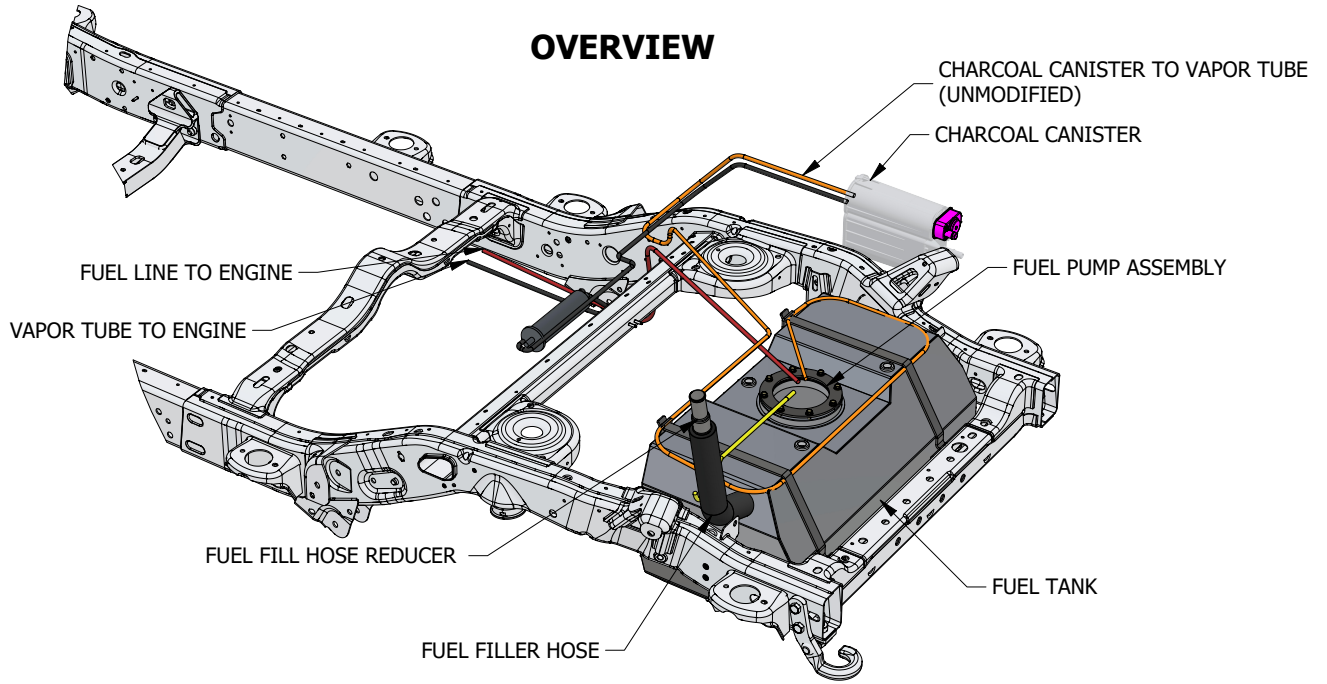
**ELECTRICAL BUTT CONECTOR  
16Ga - 14Ga  
Qty: 4**



**ELECTRICAL BUTT CONNECTOR  
12Ga - 10Ga  
Qty: 4**

**MB5033 - JL EVAP Modification**

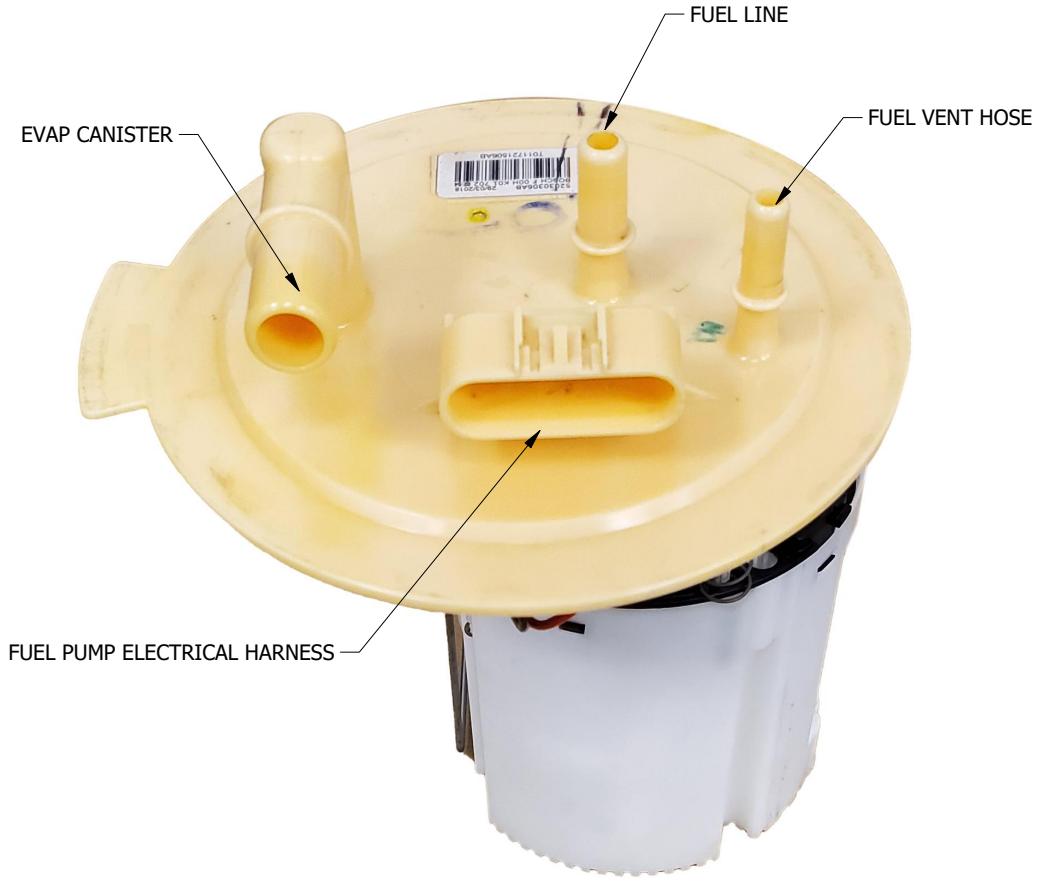
**OVERVIEW**



**MB5033 - JL EVAP Modification**

**FACTORY FUEL PUMP**

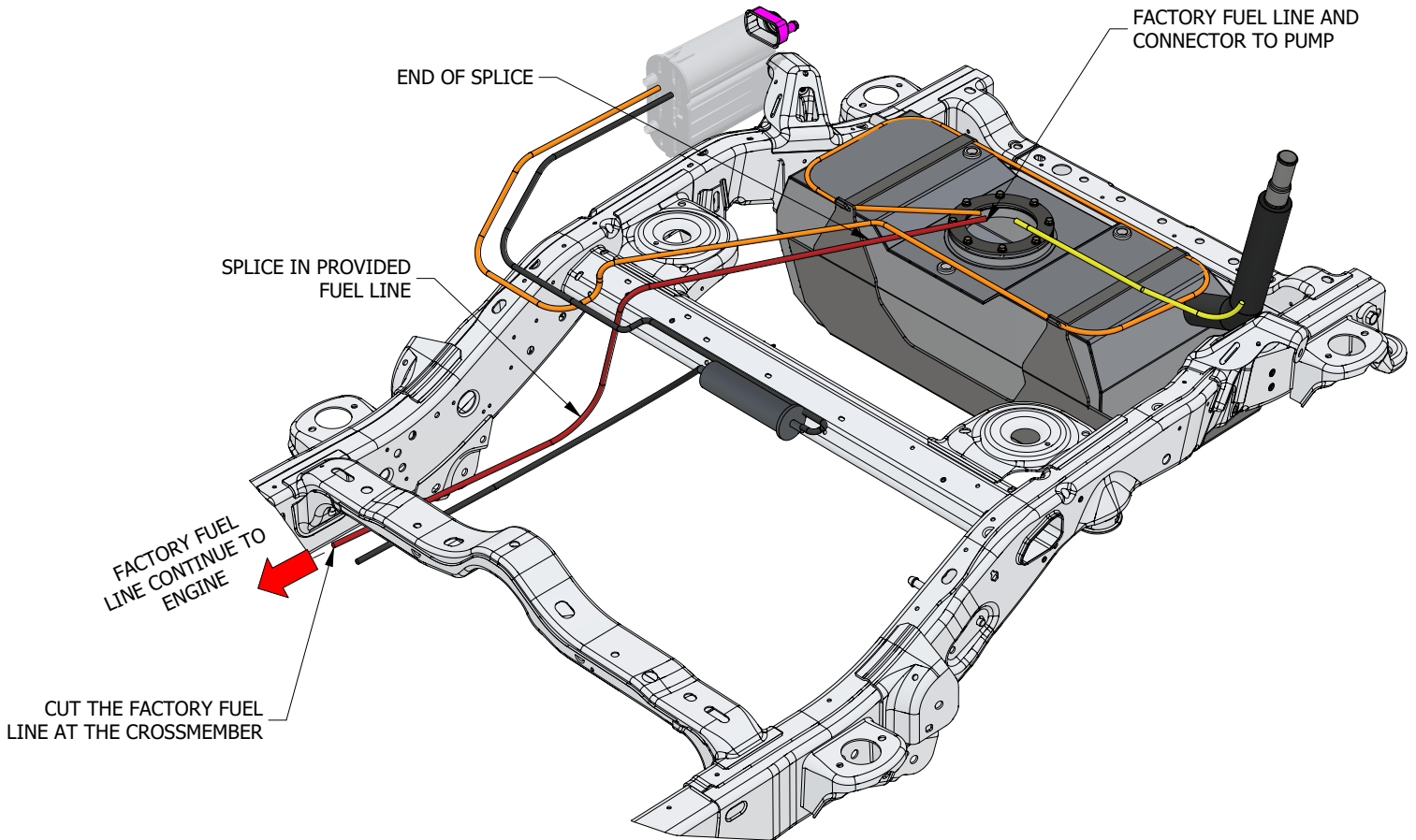
TAKE CARE TO LEAVE AT LEAST 6" OF HOSE ON EACH OF THE FACTORY FUEL PUMP CONNECTIONS



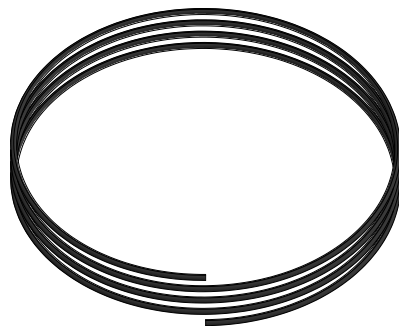
**MB5033 - JL EVAP Modification**

**FUEL LINE (RED)**

CUT THE FACTORY FUEL LINE AT THE CROSS MEMBER SO THERE IS ROUGHLY 1-1/2' OF THE FACTORY HOSE STILL ATTACHED TO THE FACTORY FUEL LINE CONNECTOR. THE PROVIDED 3/8" FUEL LINE CAN BE SPLICED INTO THE FACTORY FUEL LINE.



FACTORY FUEL LINE TO ENGINE



FACTORY FUEL LINE TO TANK

**FUEL LINE UNION**

**FUEL LINE UNION**

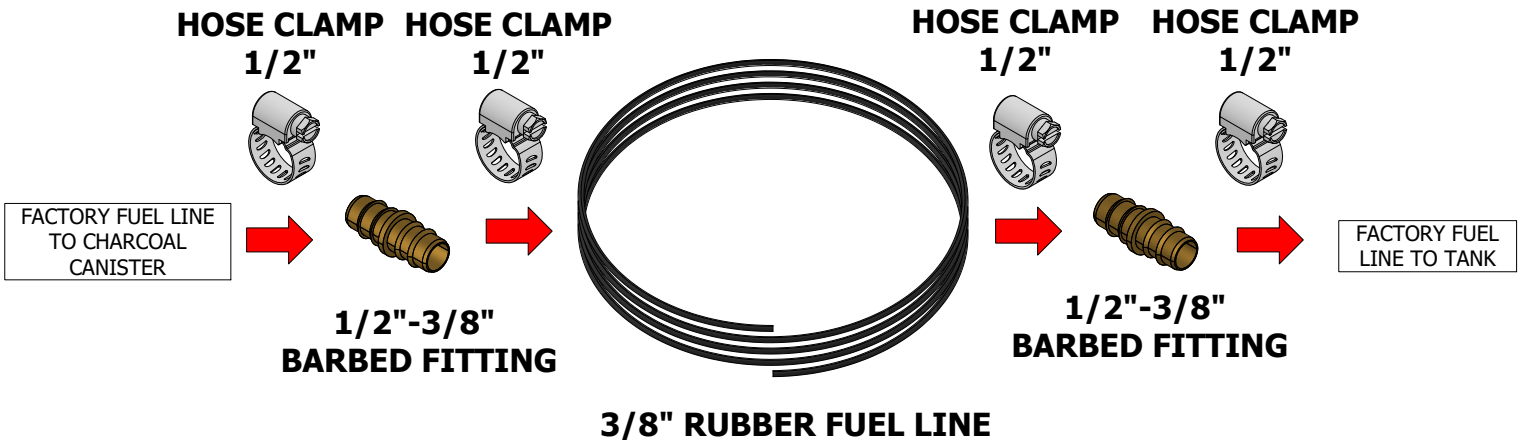
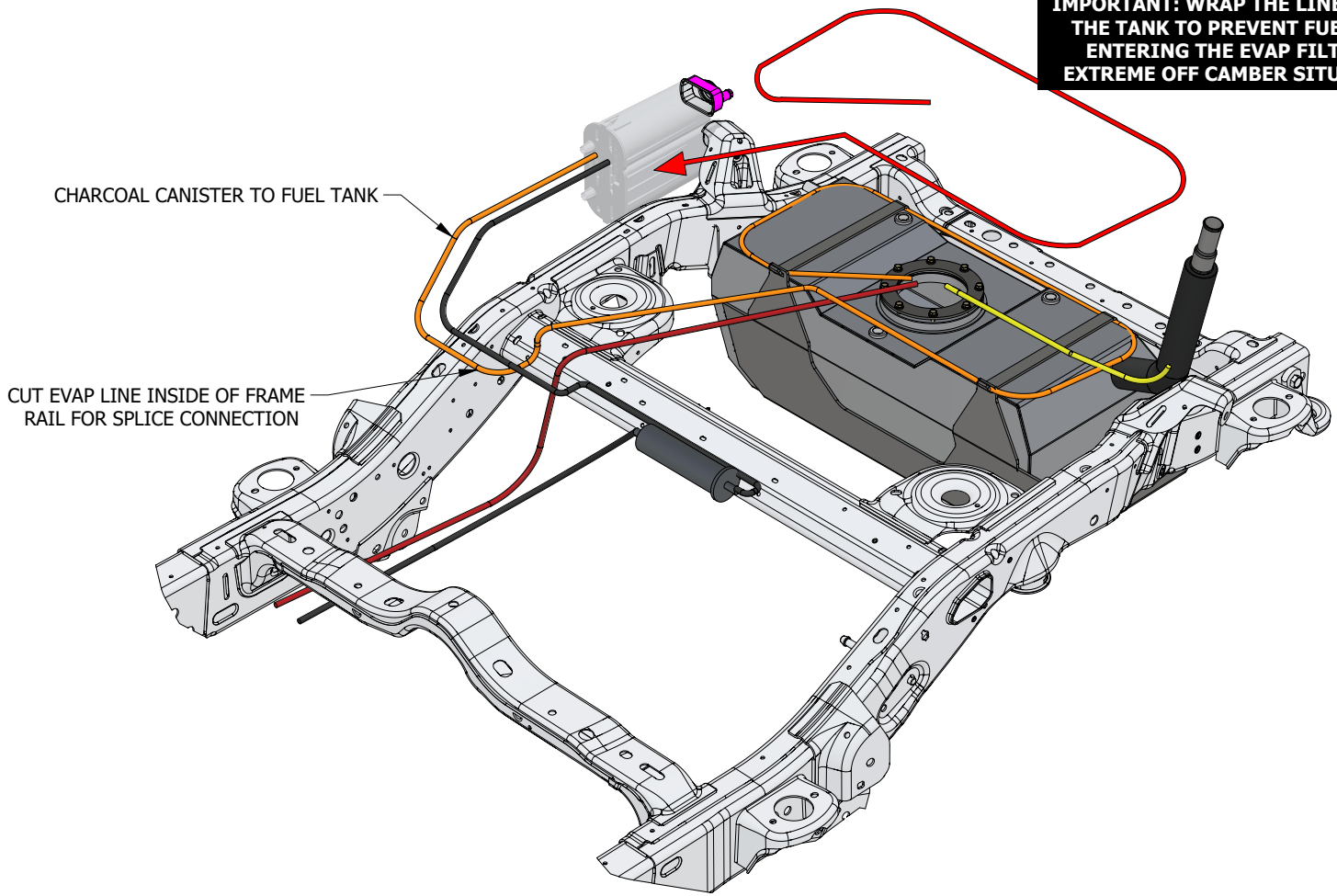
**3/8" NYLON FUEL LINE**

**MB5033 - JL EVAP Modification**

**CHARCOAL CANISTER TO FUEL TANK LINE (ORANGE)**

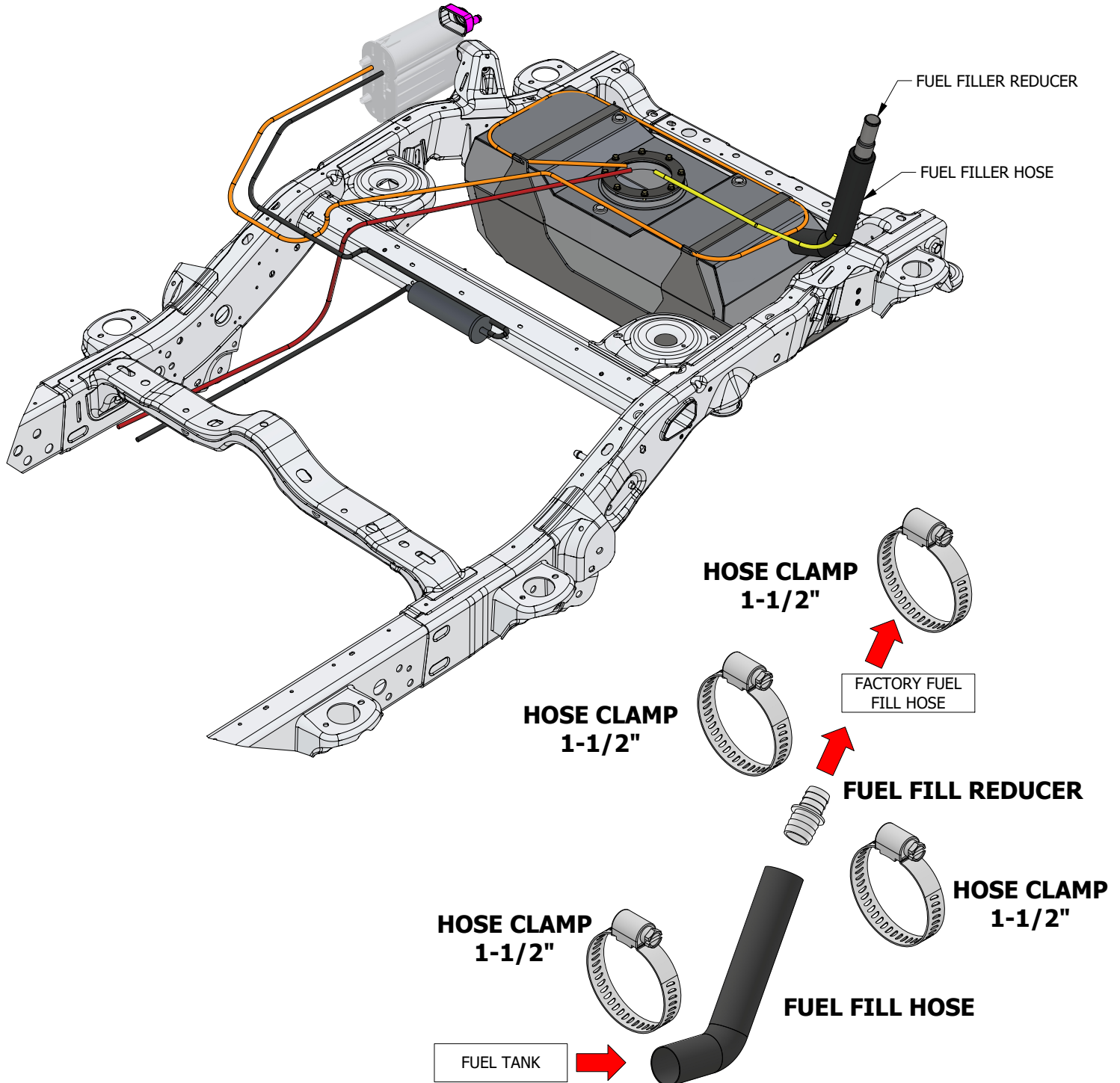
CUT THE FACTORY EVAP LINE INSIDE OF THE FRAME SO THERE IS ROUGHLY 6" OF THE FACTORY HOSE STILL ATTACHED TO THE FACTORY EVAP LINE CONNECTOR. WRAP THE PROVIDED 3/8" FUEL LINE AROUND THE GAS TANK AND SPLICE INTO THE FACTORY EVAP LINE.

**IMPORTANT: WRAP THE LINE AROUND THE TANK TO PREVENT FUEL FROM ENTERING THE EVAP FILTER IN EXTREME OFF CAMBER SITUATIONS.**



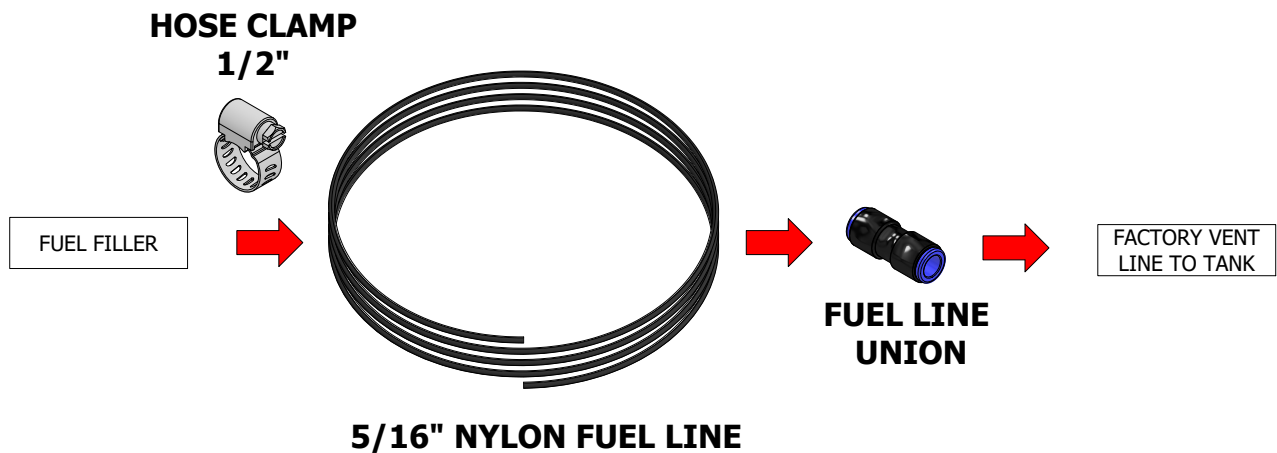
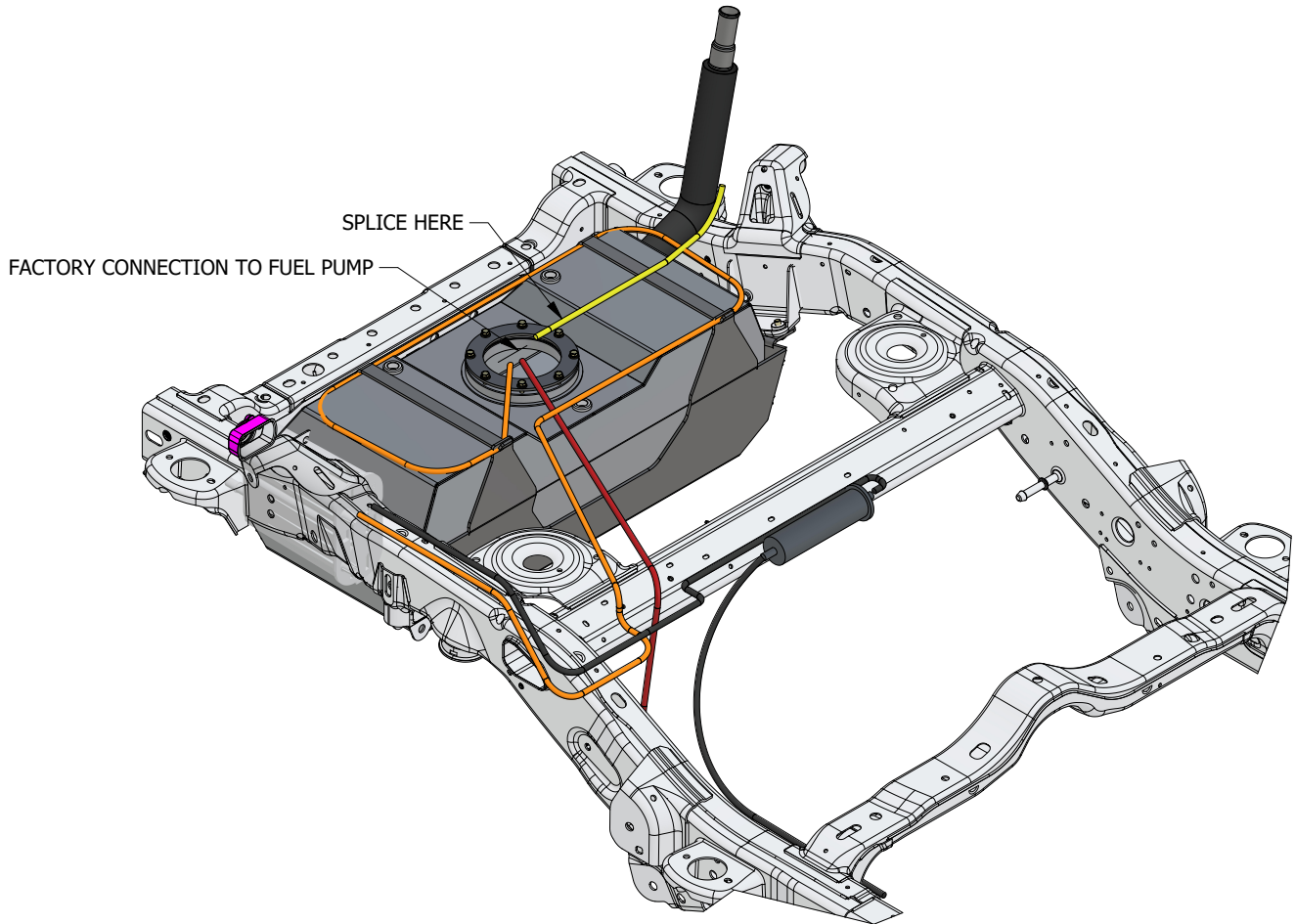
**MB5033 - JL EVAP Modification****FUEL FILLER HOSE**

CUT THE FACTORY FUEL FILL HOSE TO ALLOW ENOUGH LENGTH TO SUFFICIENTLY SPLICE IN THE FUEL FILL REDUCER. SLIP THE SUPPLIED FUEL FILL HOSE OVER THE GAS TANK FUEL INLET. MARK AND TRIM THE SUPPLIED FUEL HOSE WHERE IT SLIPS ONTO THE FUEL FILL REDUCER. ONCE CUT TO LENGTH, INSTALL THE FUEL FILL HOSE AND CLAMP ALL CONNECTIONS WITH THE PROVIDED HOSE CLAMPS. CHECK FOR LEAKS.



**MB5033 - JL EVAP Modification****FUEL FILL VENT LINE (YELLOW)**

CUT THE FACTORY FUEL FILL VENT LINE 1FT BACK FROM THE CONNECTION AT THE FUEL PUMP. USE A 5/16" UNION TO SPLICE IN THE PROVIDED 5/16" FUEL LINE. RUN THE NEW FUEL FILL VENT LINE TO THE FACTORY FUEL FILL BARB CONNECTION AND HOSE CLAMP THE LINE IN PLACE.





**MB5033 - JL EVAP Modification**

**FUEL PUMP WIRING HARNESS**

THE FUEL PUMP WIRING HARNESS NEEDS TO BE LENGTHENED TO REACH THE NEW FUEL TANK LOCATION. CUT THE FACTORY HARNESS 6" FROM THE FUEL PUMP CONNECTOR AND ADD IN THE SPLICE USING THE PROVIDED WIRE AND BUTT CONNECTORS. HEAT SHRINK THE BUTT CONNECTORS TO PROTECT THE WIRING FROM THE ELEMENTS.

