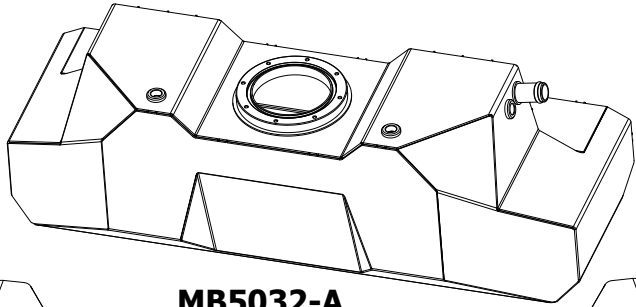
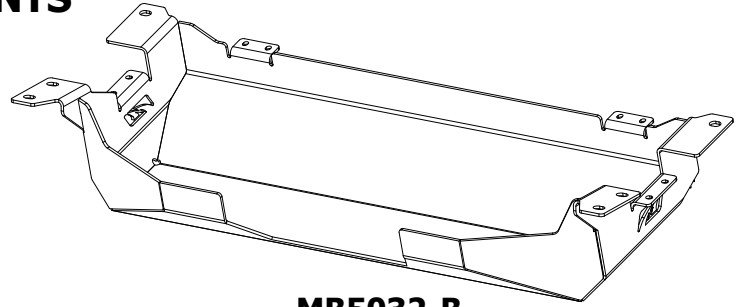


MB5032 - Assembly Instructions Rear Fuel Tank & Skid for Factory Frame

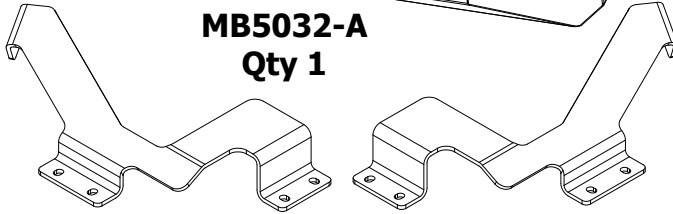
CONTENTS



MB5032-A
Qty 1



MB5032-B
Qty 1

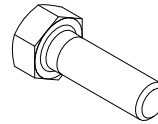


MB5032-10
Qty 1

MB5032-10_MIR
Qty 1



Flat Washer
M6 Stainless
Qty 1



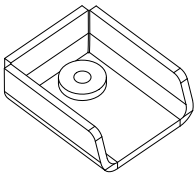
Hex Bolt
5/16"-18 x 1"
Qty 8



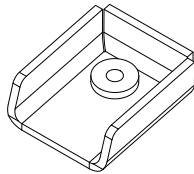
Flat Washer
5/16"
Qty 16



Nylock Nut
5/16"-18
Qty 8



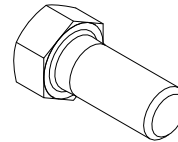
MB5032-11
Weldment
Qty 1



MB5032-11_MIR
Weldment
Qty 1



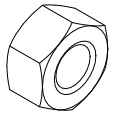
E-Clip, 4mm
Qty 4



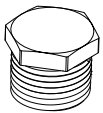
Hex Bolt
7/16"-14 x 1"
Qty 2



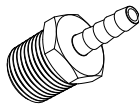
Flat Washer
7/16"
Qty 4



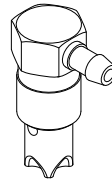
Nylock Nut
7/16"-14
Qty 2



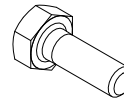
1/2" NPT Plug
Qty 1



Barbed Hose Fitting
Qty 1



Roll Over Valve
Qty 1



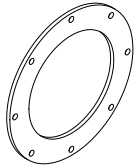
Hex Bolt
1/4"-20 x 3/4"
Qty 8



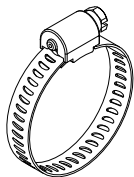
Lock Washer
1/4"
Qty 8



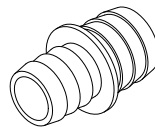
Flat Washer
1/4"
Qty 8



MB5515-02
Qty 1



Hose Clamp, 1-1/2"
Qty 4



Fuel Fill Reducer
Qty: 2



MB5015
Fuel Pump Extension Rod
Qty 2



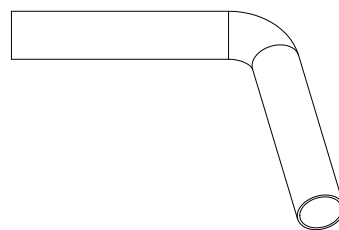
Primary Wire, Black 4"
Qty 1



Primary Wire, Red 4"
Qty 1



Rubber Strip
Qty 2



90 Degree Rubber Hose, 1-1/2"
Qty 1



Butt Connector, Pink
Qty 4