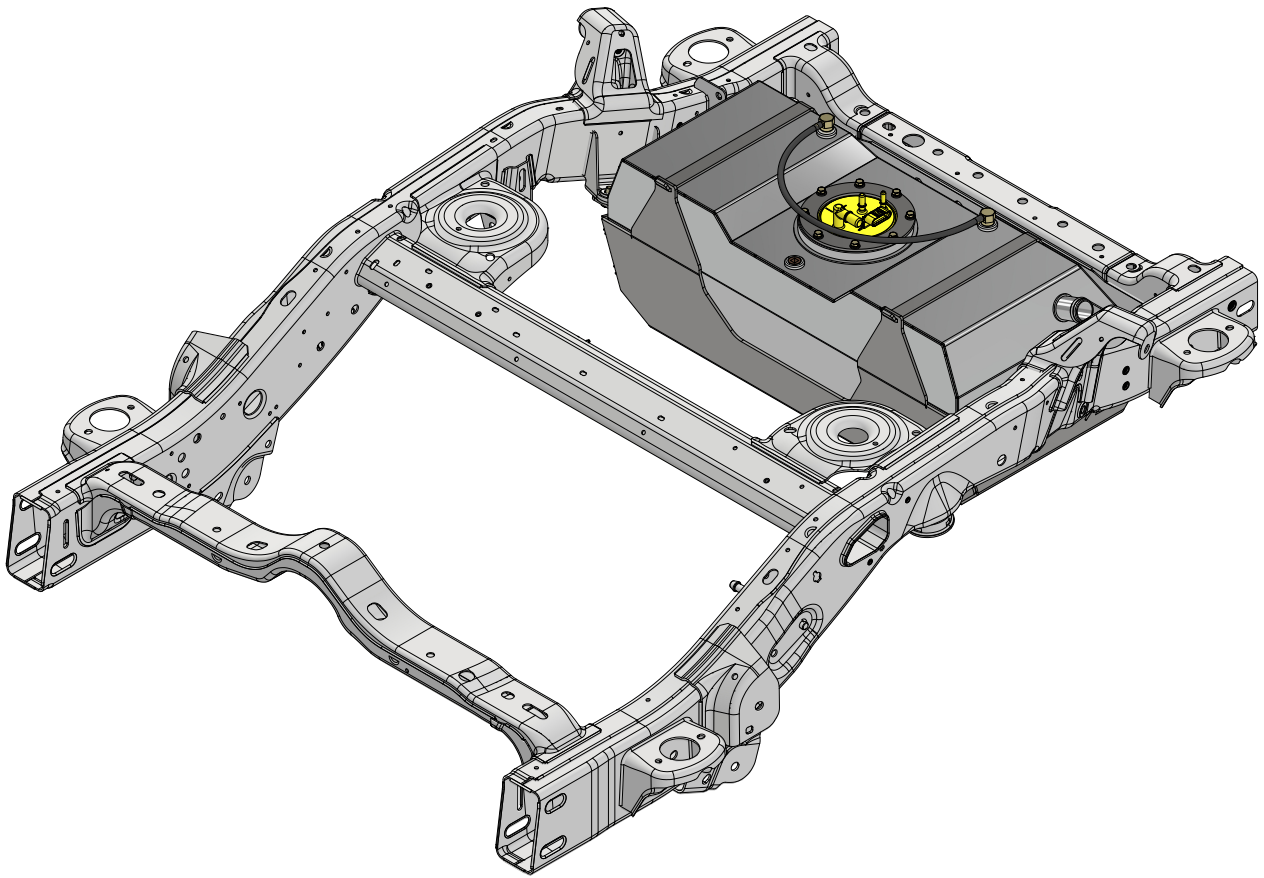


MB5026 - Assembly Instructions JL/JLU Rear Fuel Tank and Skid

JL/JLU REAR FUEL TANK FOR FACTORY FRAME



ASSEMBLY INSTRUCTIONS

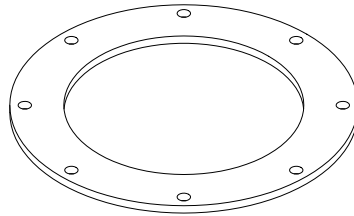
MB5026 - Assembly Instructions JL/JLU Rear Fuel Tank and Skid

KIT COMPONENTS

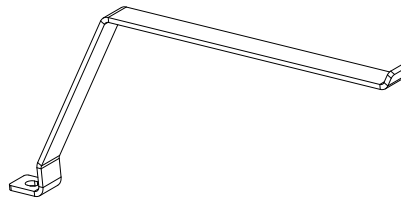
RUBBER HOSE
5/16"; 24"
Qty: 1

RUBBER STRIP
Qty: 2

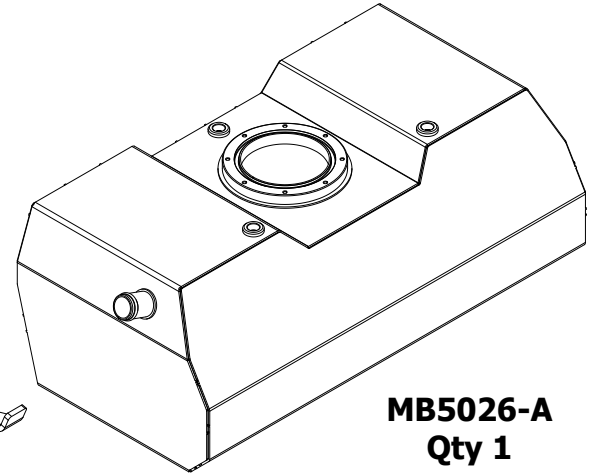
MB5028
FUEL EXTENSION ROD
Qty: 2



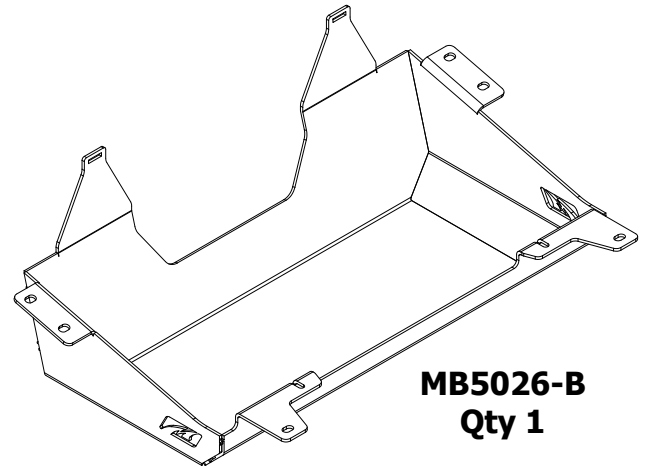
MB5515-02
Qty 1



MB5026-05
Qty 2



MB5026-A
Qty 1



MB5026-B
Qty 1

HEX BOLT
1/4"-20 x 1"
Qty 8

LOCK WASHER
1/4"
Qty 10

FLAT WASHER
1/4"
Qty 8

ROLL OVER VALVE
Qty: 2

HEX BOLT
3/8"-16 x 1-1/4"
Qty 2

FLAT WASHER
3/8"
Qty 4

HOSE CLAMP
1/2"
Qty: 2

RIVNUT
M10 x 1.5
Qty: 2

NPT PLUG
1/2" NPT
Qty: 1

Hose Clamp, 1-1/2"
Qty 4

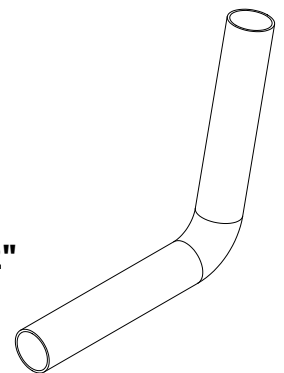
HEX BOLT
M10-1.5 x 25mm
Qty 6

FLAT WASHER
M10
Qty 6

RETAINING RING
5mm
Qty: 3

NYLOCK NUT
3/8"-16
Qty 2

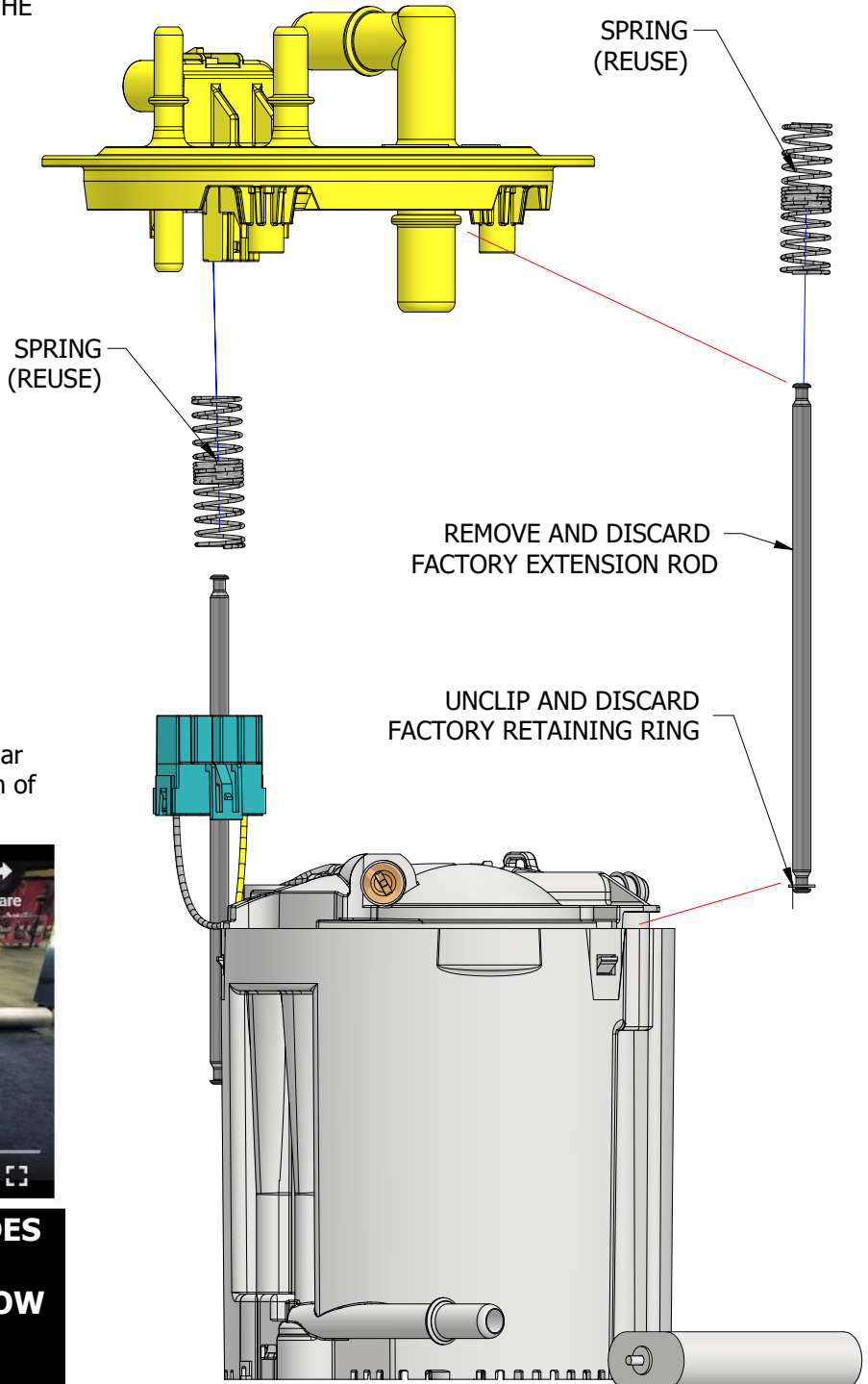
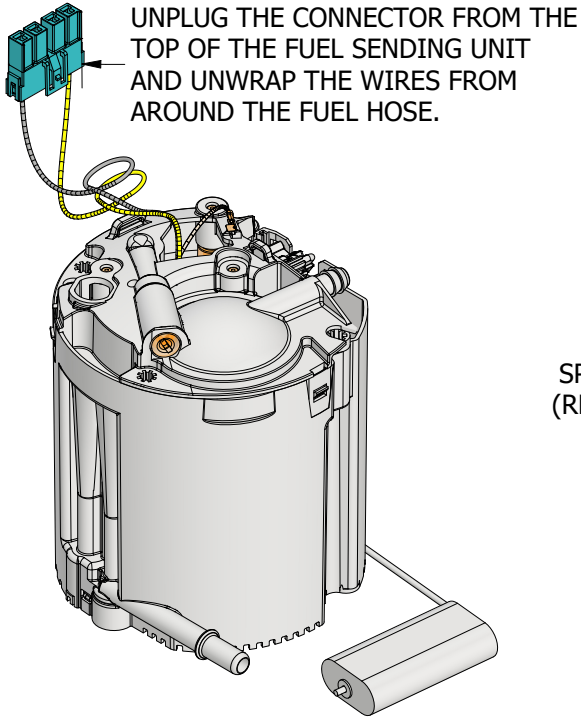
90 Degree Rubber Hose, 1-1/2"
Qty 1



MB5028 - ASSEMBLY INSTRUCTIONS FUEL SENDING UNIT EXTENSION KIT FOR JL/JLU

FUEL SENDING UNIT DISASSEMBLY

DISASSEMBLE THE FUEL SENDING UNIT AND REMOVE THE FACTORY EXTENSION RODS.
TAKE CARE TO NOT DAMAGE THE FUEL SENDING UNIT TOP WHEN REMOVING THE EXTENSION RODS.



A Overview video on how to disassemble a similar fuel sending unit can be found in the description of MB5015 at MOTOBILT.COM

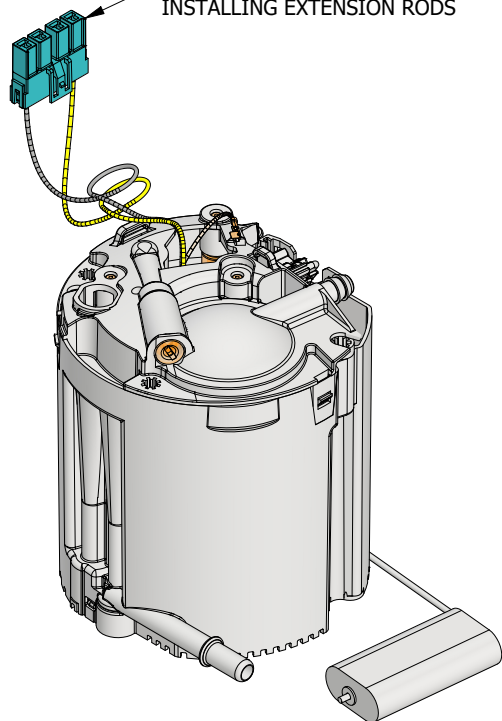


NOTE: REFERENCE VIDEO INCLUDES MB5015 FUEL SENDING UNIT EXTENSION KIT. IT DOES NOT SHOW MB5028 FUEL SENDING UNIT EXTENSION KIT

MB5028 - ASSEMBLY INSTRUCTIONS FUEL SENDING UNIT EXTENSION KIT FOR JL/JLU

FUEL SENDING UNIT RE-ASSEMBLY

RECONNECT PLUG AFTER
INSTALLING EXTENSION RODS

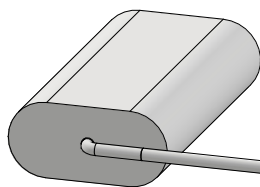
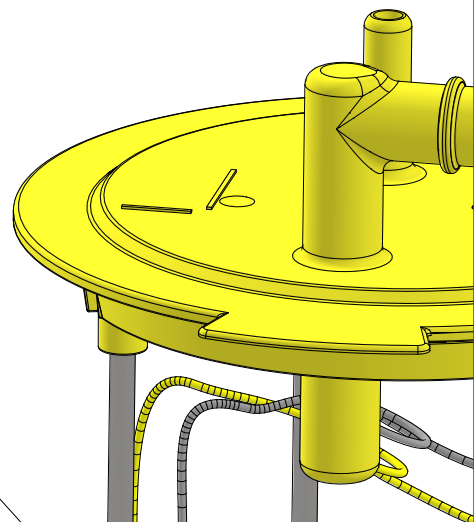


MB5028
MOTOBILT FUEL SENDING
UNIT ROD EXTENSION ROD

RETAINING RING
5mm

FLAT WASHER
1/4"

SPRING



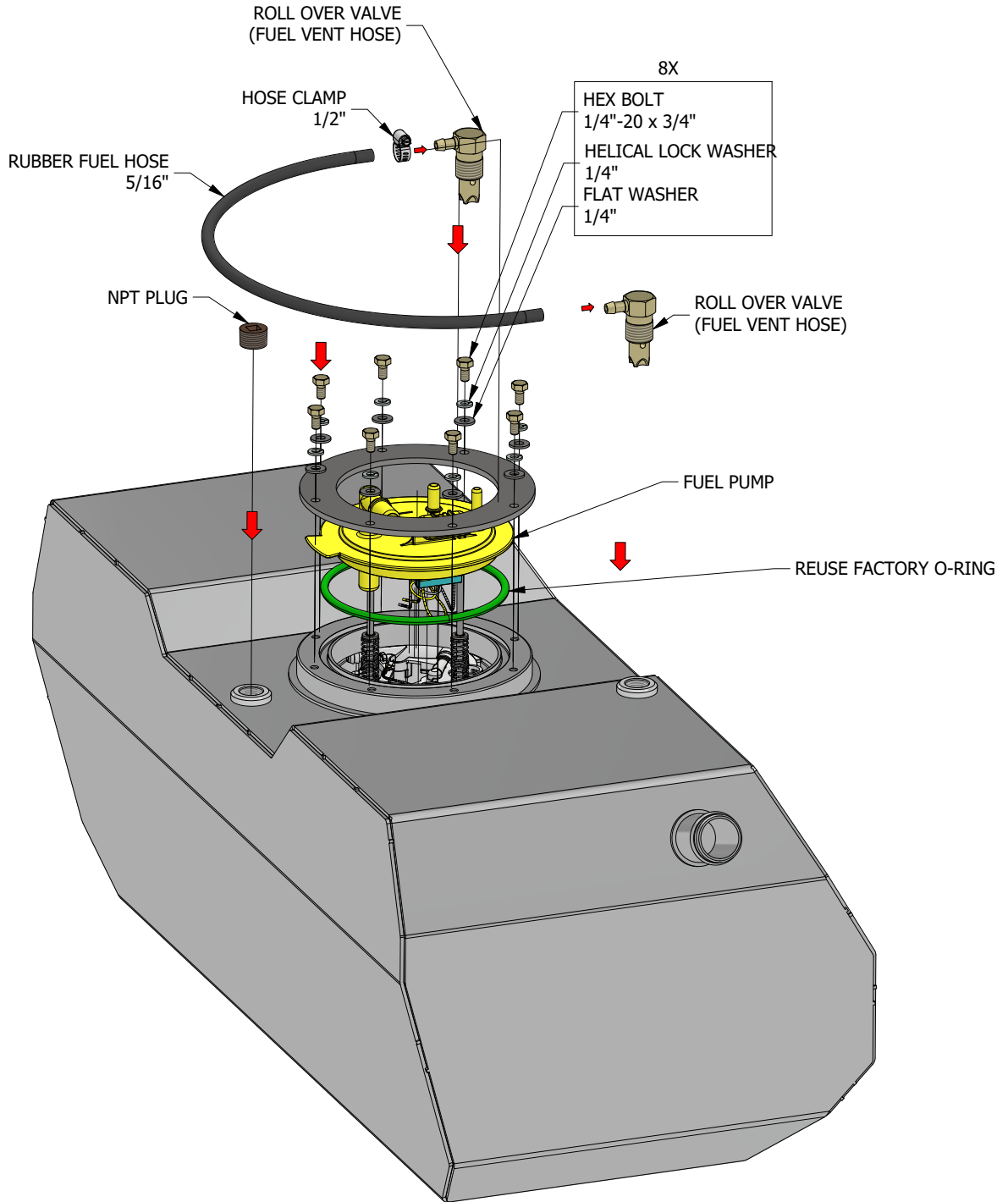
MB5028
MOTOBILT FUEL SENDING
UNIT EXTENSION ROD

RETAINING RING
5mm

**NOTE: DUE TO THE INCREASED TANK DEPTH,
THE FUEL GAUGE MAY SHOW FULL FOR AN
EXTENDED PERIOD OF TIME BEFORE SHOWING
EMPTY.**

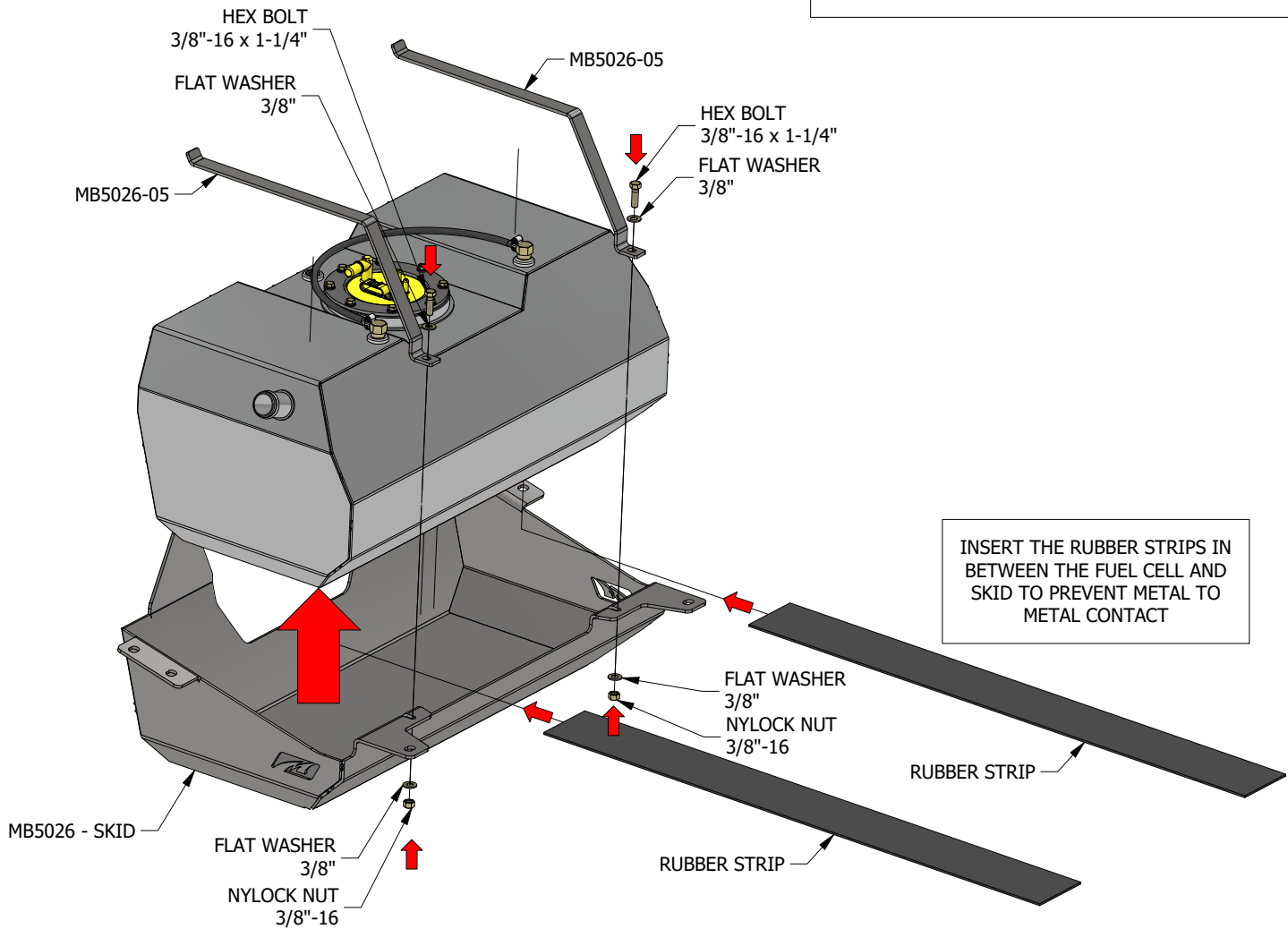
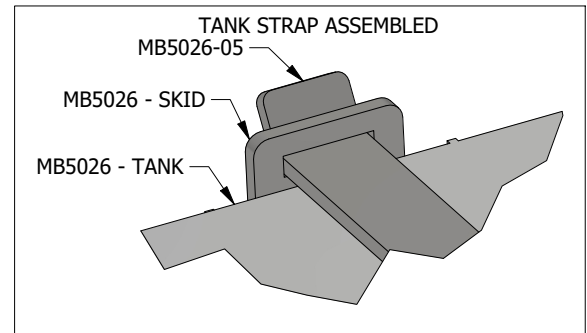
MB5026 - Assembly Instructions JL/JLU Rear Fuel Tank and Skid

TANK PREPARATION



MB5026 - Assembly Instructions JL/JLU Rear Fuel Tank and Skid

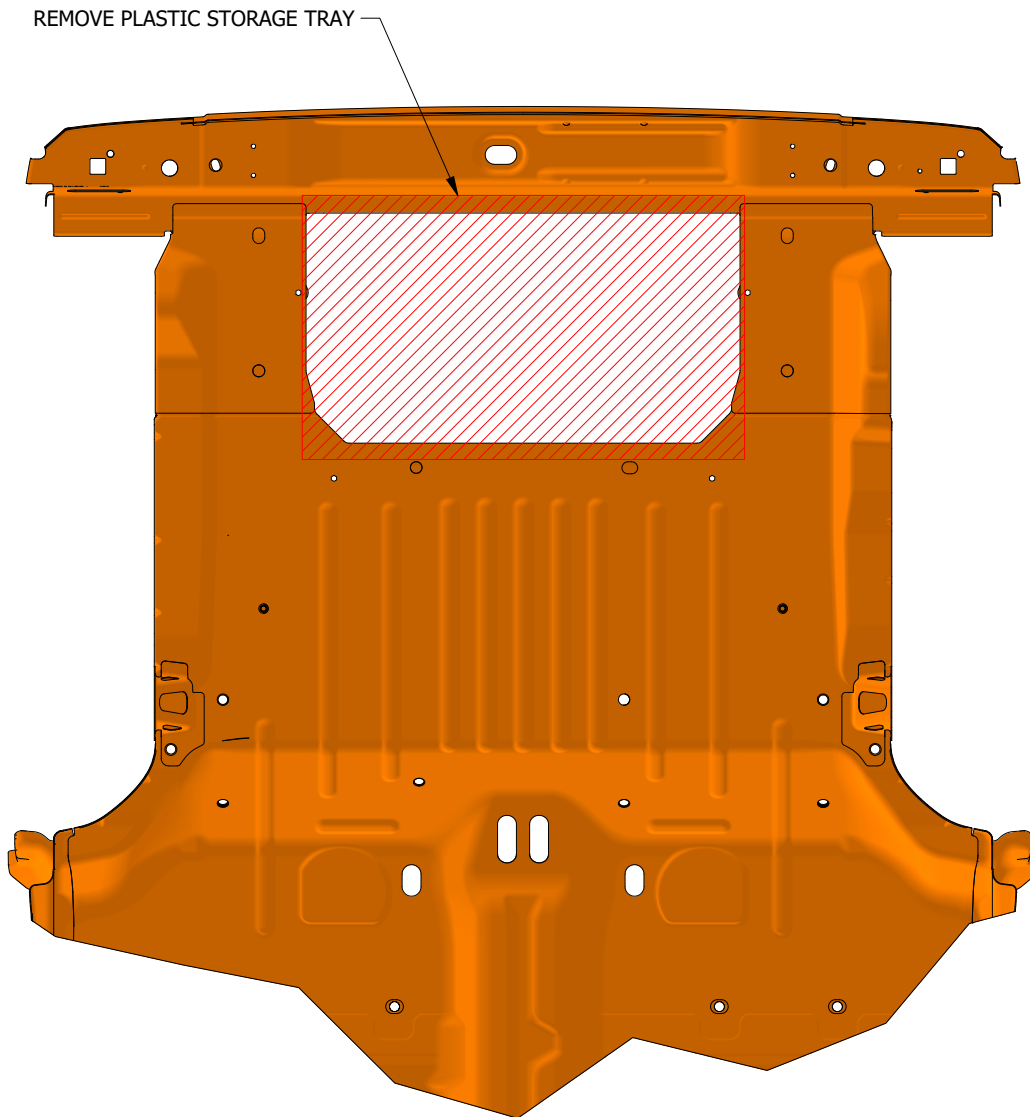
SKID ASSEMBLY



MB5026 - Assembly Instructions JL/JLU Rear Fuel Tank and Skid

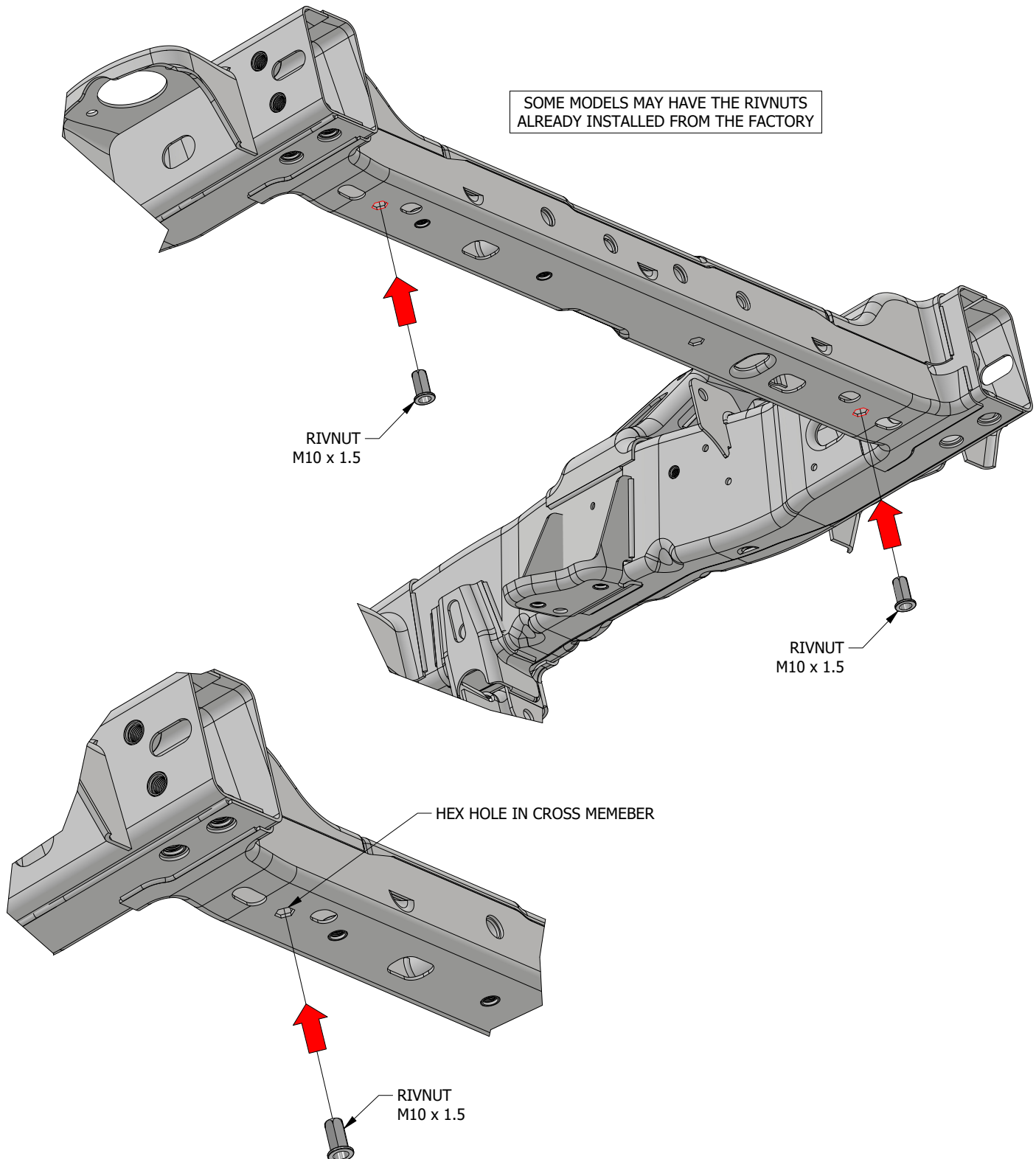
BODY MODIFICATION

THE PLASTIC STORAGE TRAY IN THE TRUNK WILL NEED TO BE REMOVED TO ALLOW ENOUGH CLEARANCE FOR THE TANK TO FIT. THE PLASTIC TRAY IS GLUED TO THE SHEET METAL AND CAN BE DIFFICULT TO REMOVE.



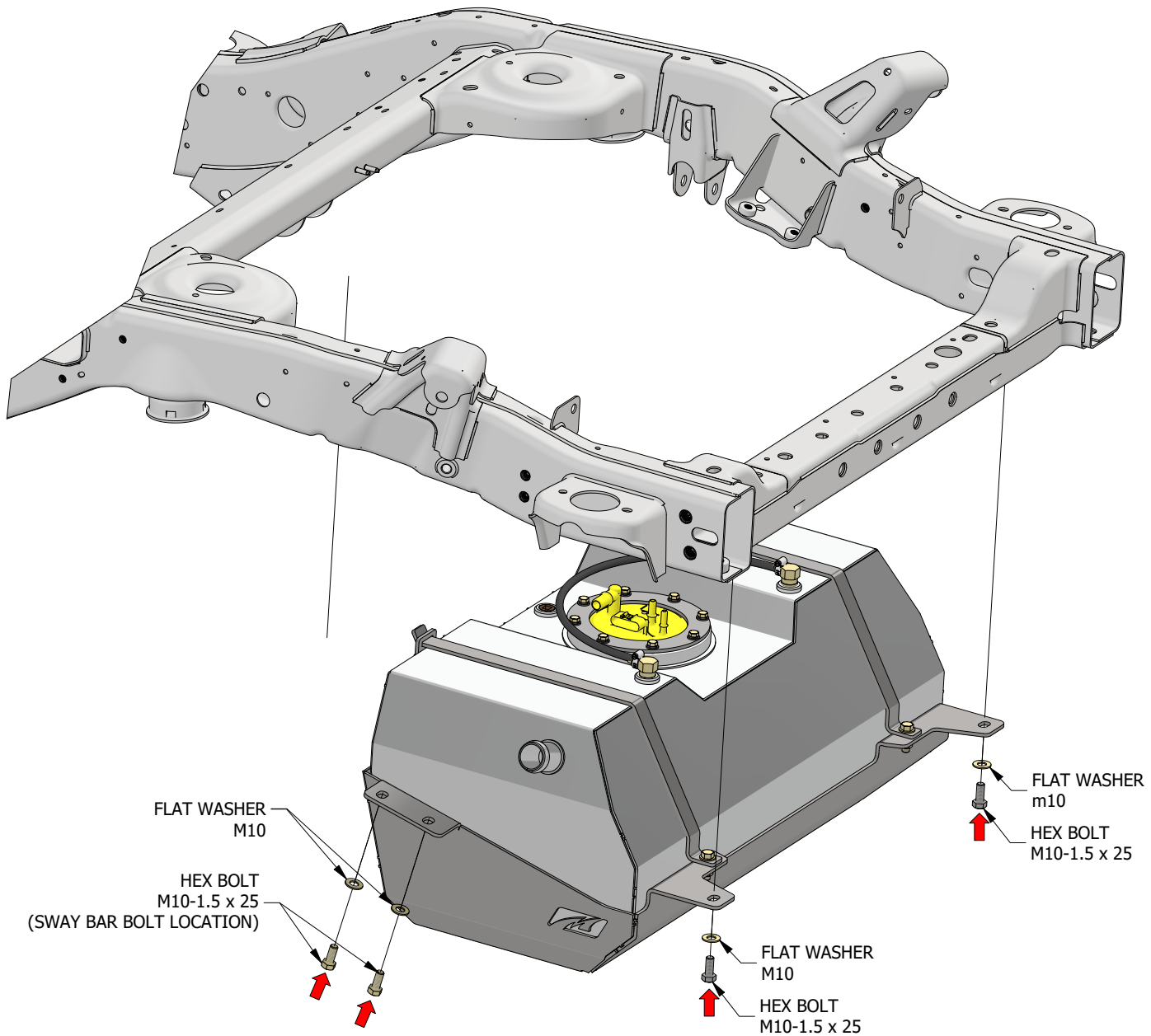
MB5026 - Assembly Instructions JL/JLU Rear Fuel Tank and Skid

RIVNUT INSTALLATION



MB5026 - Assembly Instructions JL/JLU Rear Fuel Tank and Skid

MOUNTING TO FRAME



NOTE: MODIFICATION OF THE REAR BUMPER MAY BE REQUIRED TO FREE UP SPACE FOR THE SKID PLATE

