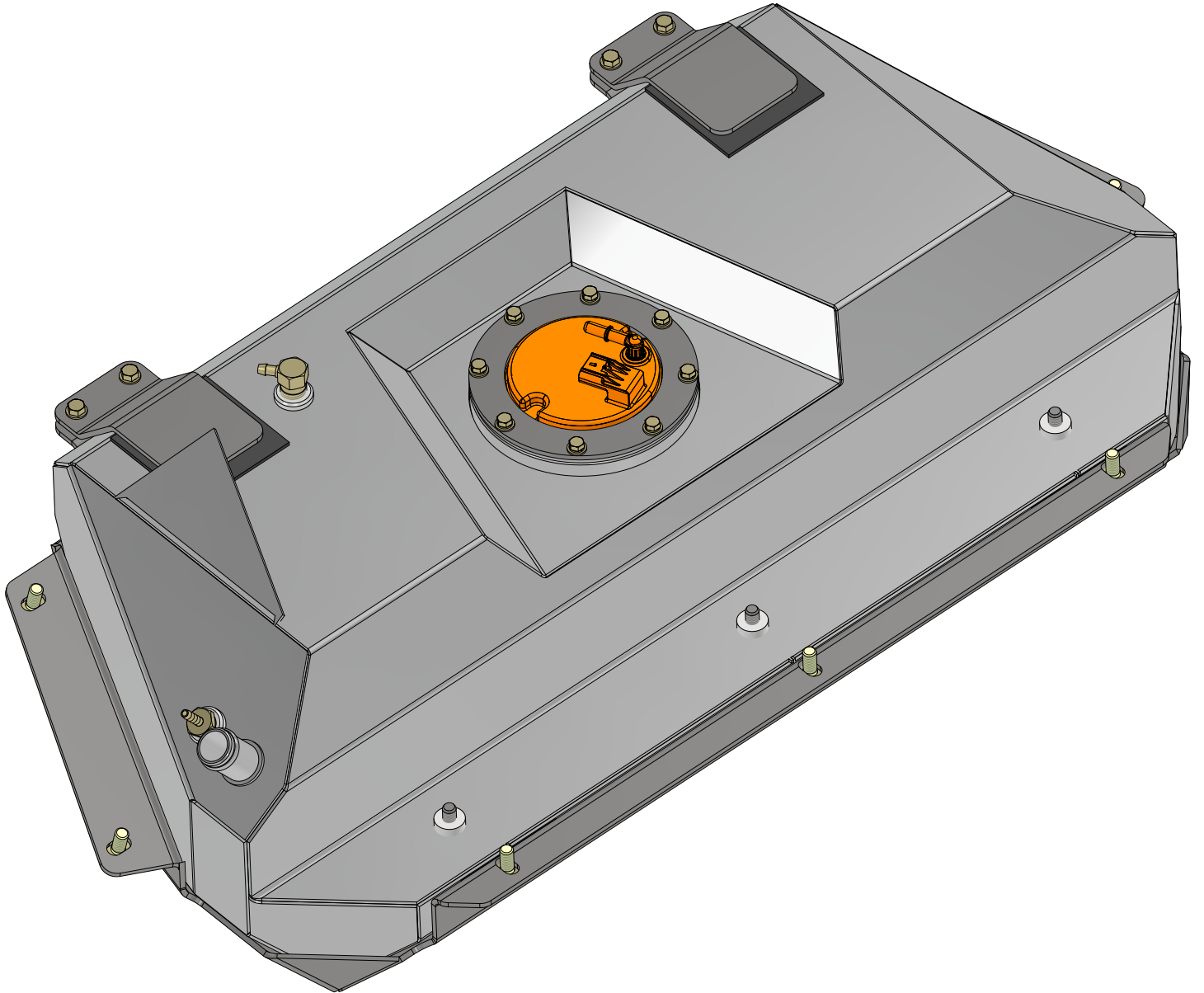
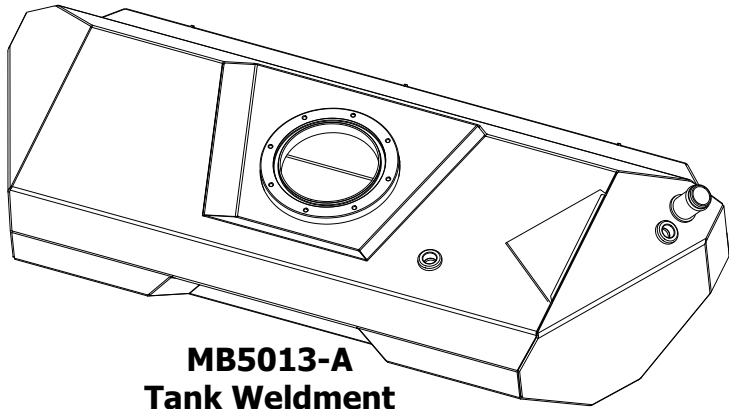


ASSEMBLY INSTRUCTIONS

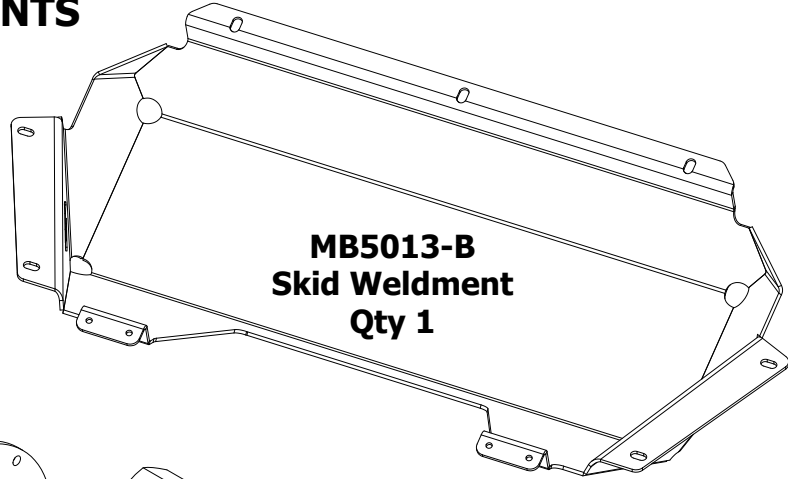


MB5013 - Assembly Instructions JKU Fuel Tank & Skid for Back Half Kit

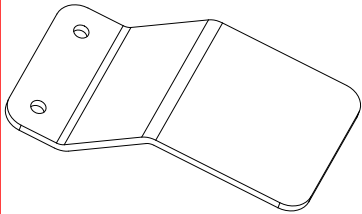
CONTENTS



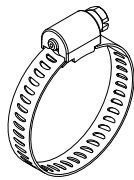
**MB5013-A
Tank Weldment
Qty 1**



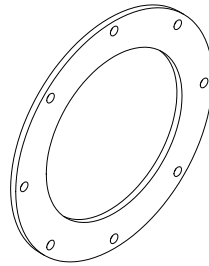
**MB5013-B
Skid Weldment
Qty 1**



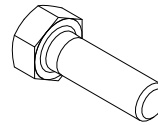
**MB5013-08
Qty 2**



**STEP AP203
Hose Clamp, 1-1/2"
Qty 4**



**MB5515-02
Qty 1**



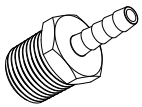
**Hex Bolt
5/16"-18 x 1-1/4"
Qty 4**



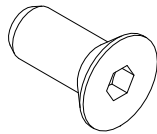
**Flat Washer
5/16"
Qty 8**



**Nylock Nut
5/16"-18
Qty 4**



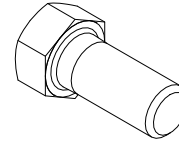
**Barbed Hose Fitting
Qty 1**



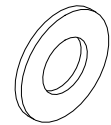
**Countersunk Screw
7/16"-14 x 1"
Qty 3**



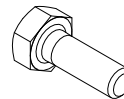
**Flat Washer
M6 Stainless
Qty 1**



**Hex Bolt
7/16"-14 x 1"
Qty 7**



**Flat Washer
7/16"
Qty 7**



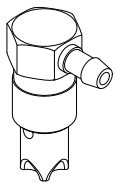
**Hex Bolt
1/4"-20 x 3/4"
Qty 8**



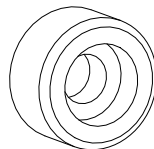
**Lock Washer
1/4"
Qty 8**



**Flat Washer
1/4"
Qty 8**



**Roll Over Valve
Qty 1**



**Rubber Bumper
1" OD x 7/16" ID without
Flat Washer inside
Qty 3**



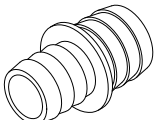
**MB5015
Fuel Pump Extension Rod
Qty 2**



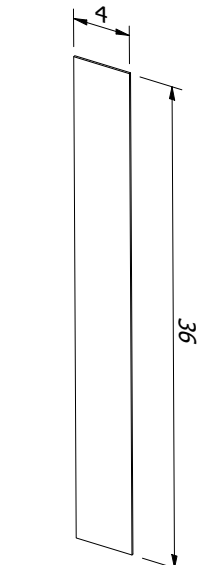
**E-Clip, 4mm
Qty 4**



**Primary Wire, Black 4"
Qty 1**



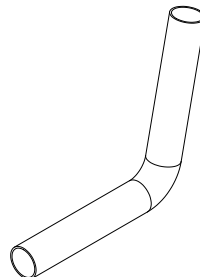
**Fuel Fill Reducer
Qty 2**



**Rubber Strip
Qty 2**



**Primary Wire, Red 4"
Qty 1**



**90 Degree Rubber Hose, 1-1/2"
Qty 1**



**Butt Connector, Pink
Qty 4**

MB5013 - Assembly Instructions JKU Fuel Tank & Skid for Back Half Kit

FOREWORD

STEPS BEFORE YOU START:

1. This fuel tank kit is specifically designed to work with the Motobilt MB3025 JKU Back Half Frame Kit. You will have to install the MB3025 kit prior to installing this fuel tank & skid.
2. Disconnect negative battery terminal.
3. Ideally, use a vehicle lift to safely raise the vehicle & perform many of the mechanical disassembly & reassembly steps shown in these instructions. It is possible to perform this install without a vehicle lift.
4. You do NOT need to remove the MB1081 Motobilt Rear Bumper that is included with MB3025 JKU Back Half Frame Kit, however, for clarity, we do not show the MB1081 in these instructions.
5. You do NOT need to remove the rear axle or suspension to complete this install. The tank & skid simply bolt into place on the MB3025 Back Half Frame. The rear axle is NOT shown in the assembly instructions views, simply for clarity.
6. The skid plate & brackets included with this kit ship as raw steel. Clean & paint (or powder coat) all steel parts AFTER INSTALLATION & FITMENT IS CONFIRMED.
7. These instructions assume you already have the factory fuel tank removed from your vehicle. These instructions show you how to reuse & modify the factory fuel pump/fuel sending unit.

NOTES:

Check with your local laws & insurance before performing this install.

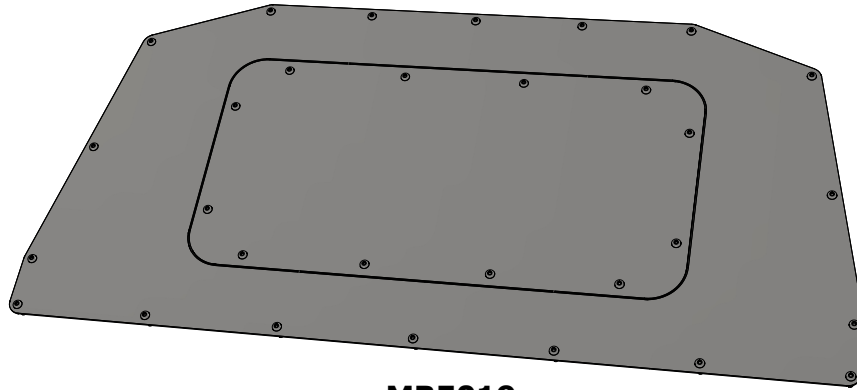
The MB5013 Fuel Tank & Skid kit is designed to function with an aftermarket rear swaybar, available from Currie Enterprises. This kit will NOT function with the factory rear swaybar.

The function of this product is to relocate the fuel storage from the factory location to the rear of the vehicle, making room for an aftermarket 4 link rear suspension system for increased suspension articulation. Motobilt offers a compatible 4 link suspension bracket kit that works seamlessly with this rear fuel tank system. See MB7000 Jeep JKU 4 Link Suspension Bracket & Skid Kit on our website.

These assembly instructions do NOT cover the installation of an aftermarket exhaust system.

This product requires cutting the body in the rear compartment area to gain access to the top of the new aluminum tank for making connections & maintenance. Motobilt offers MB5019 Fuel Cell Access Hatch (sold separately) as an optional product to cover the opening that will be created when installing this product.

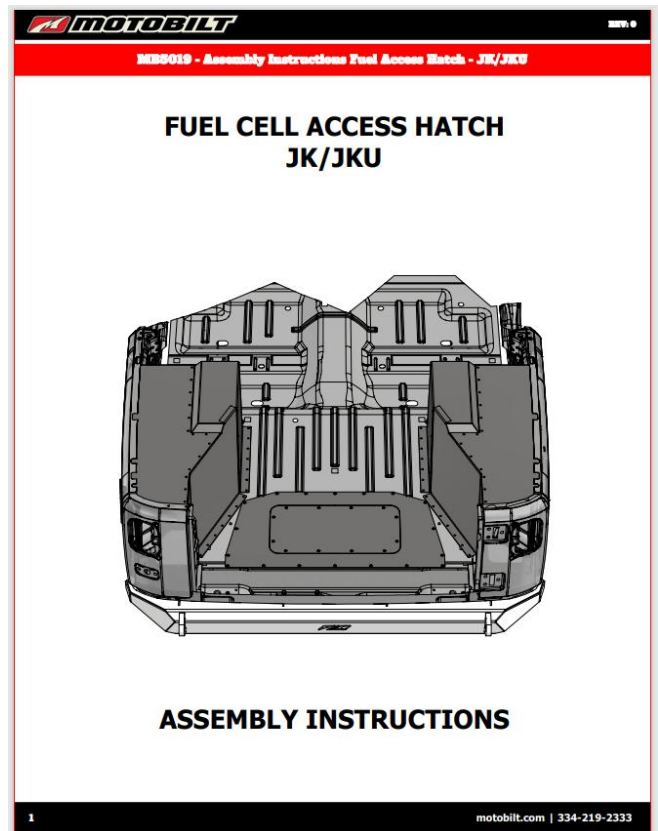
You will reuse & modify the factory fuel pump/sending unit. This product includes all of the components to modify the factory fuel sending unit.

MB5013 - Assembly Instructions JKU Fuel Tank & Skid for Back Half Kit**STEP 1
Cut Body (Optional)**

**MB5019
Fuel Cell Access Hatch Kit
(Sold Separately)**

If you want to have top access to the new MB5013 tank & it's fuel connections you may choose to cut an opening in the body located in the cargo bay area, then consider purchasing & installing our optional MB5019 Fuel Cell Access Hatch Kit. The MB5019 - Assembly Instructions will guide you through all of the steps to cutting an opening in the body & adding a removable cover.

This step is NOT required, but it is a great solution for convenient & quick access to your fuel connections without having to removed the tank.

See MB5019 - Assembly Instructions

MB5013 - Assembly Instructions JKU Fuel Tank & Skid for Back Half Kit

**STEP 2
Modify Fuel Sending Unit**

The factory fuel sending unit is too shallow to function with the MB5013 tank. This kit is included with the MB5013 tank & provides all of the components needed to extend the length of the factory fuel sending unit.

See MB5015 - Assembly Instructions

MOTOBILT REV: 0

MB5015 - Assembly Instructions JKU Fuel Sending Unit Extension Kit

ASSEMBLY INSTRUCTIONS

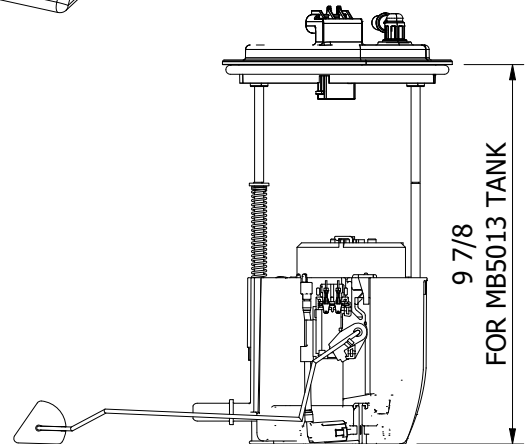
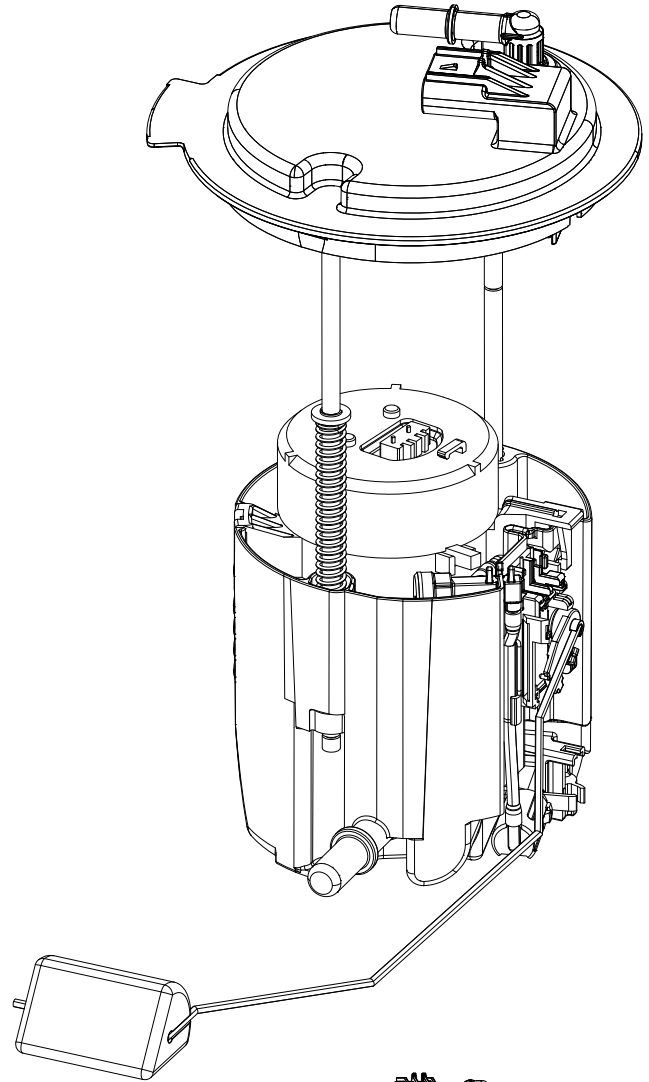
7 5/8
FACTORY
Factory Depth

9 7/8
FOR MB5013 TANK
MB5015 Cut for MB5013 Tank Depth

12 9/16
FOR MB5032 TANK
MB5015 Uncut for MB5032 Tank Depth

These instructions are intended to extend the physical length of the factory fuel sending unit by changing the rod lengths, extend the wiring & reuse many of the factory components of the fuel sending unit to function with different depths of Motobilt brand of aluminum tanks.

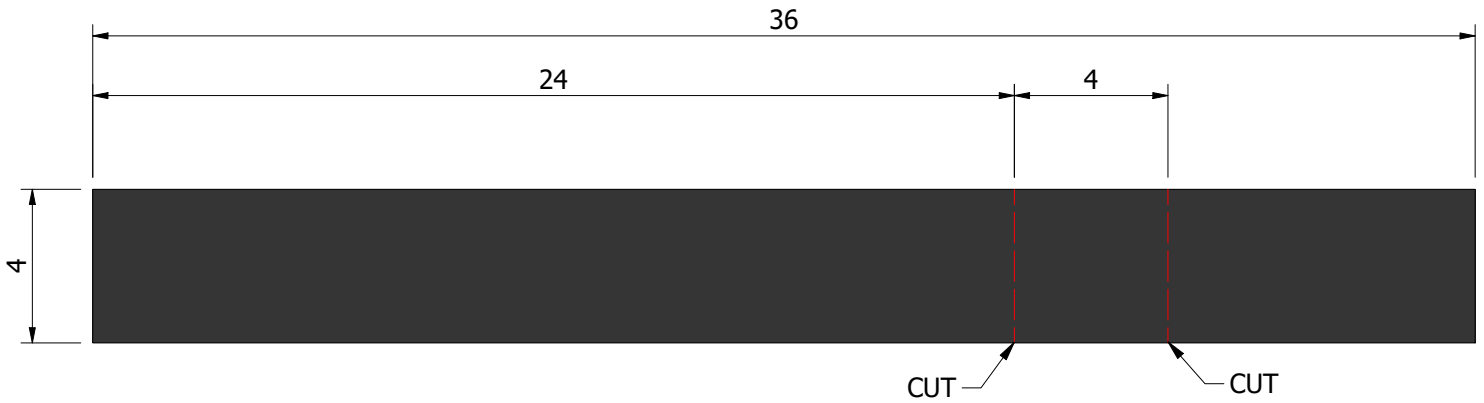
motobilt.com | 334-219-2333



MB5015 Cut for MB5013 Tank Depth

MB5013 - Assembly Instructions JKU Fuel Tank & Skid for Back Half Kit**STEP 3
Cut Rubber Strips**

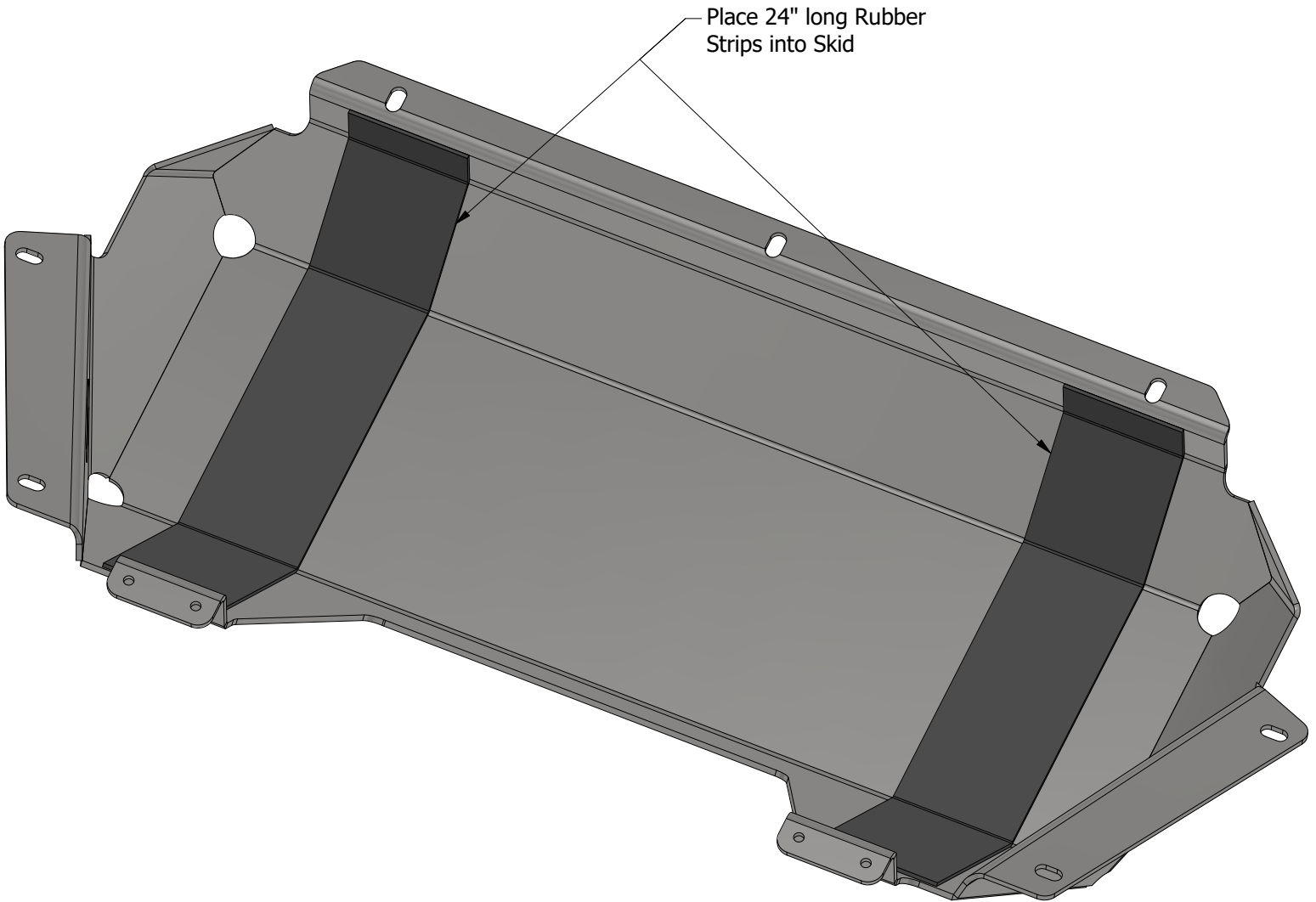
THESE RUBBER PADS DAMPEN VIBRATION BETWEEN THE FUEL CELL AND THE SKID PLATE, THEY ALSO PREVENT CORROSION BETWEEN THE ALUMINUM AND THE STEEL



BEFORE CUTTING
x 2 pieces

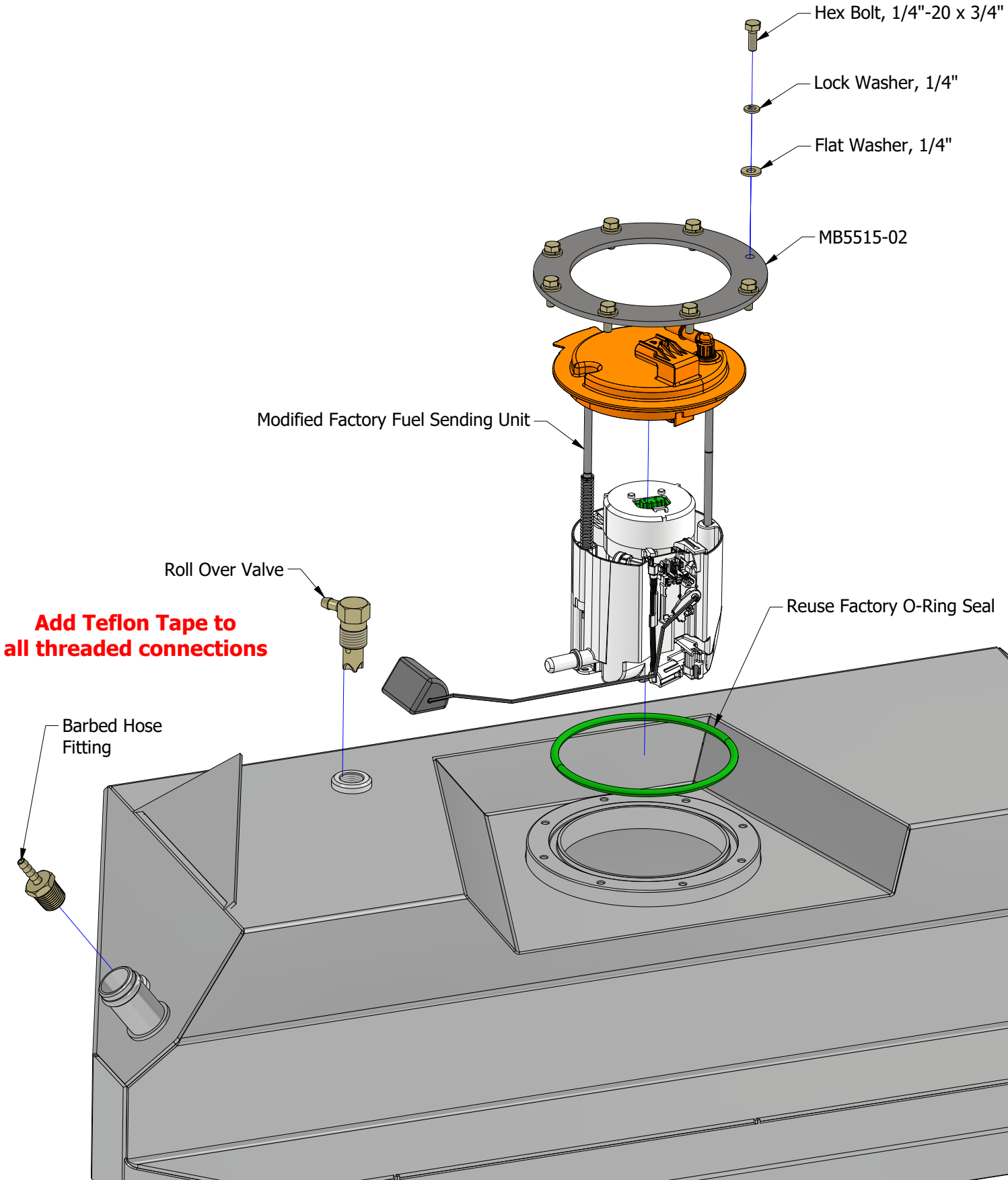


AFTER CUTTING
x 2 pieces each

MB5013 - Assembly Instructions JKU Fuel Tank & Skid for Back Half Kit**STEP 4**
Add 24" Rubber Strips to Skid

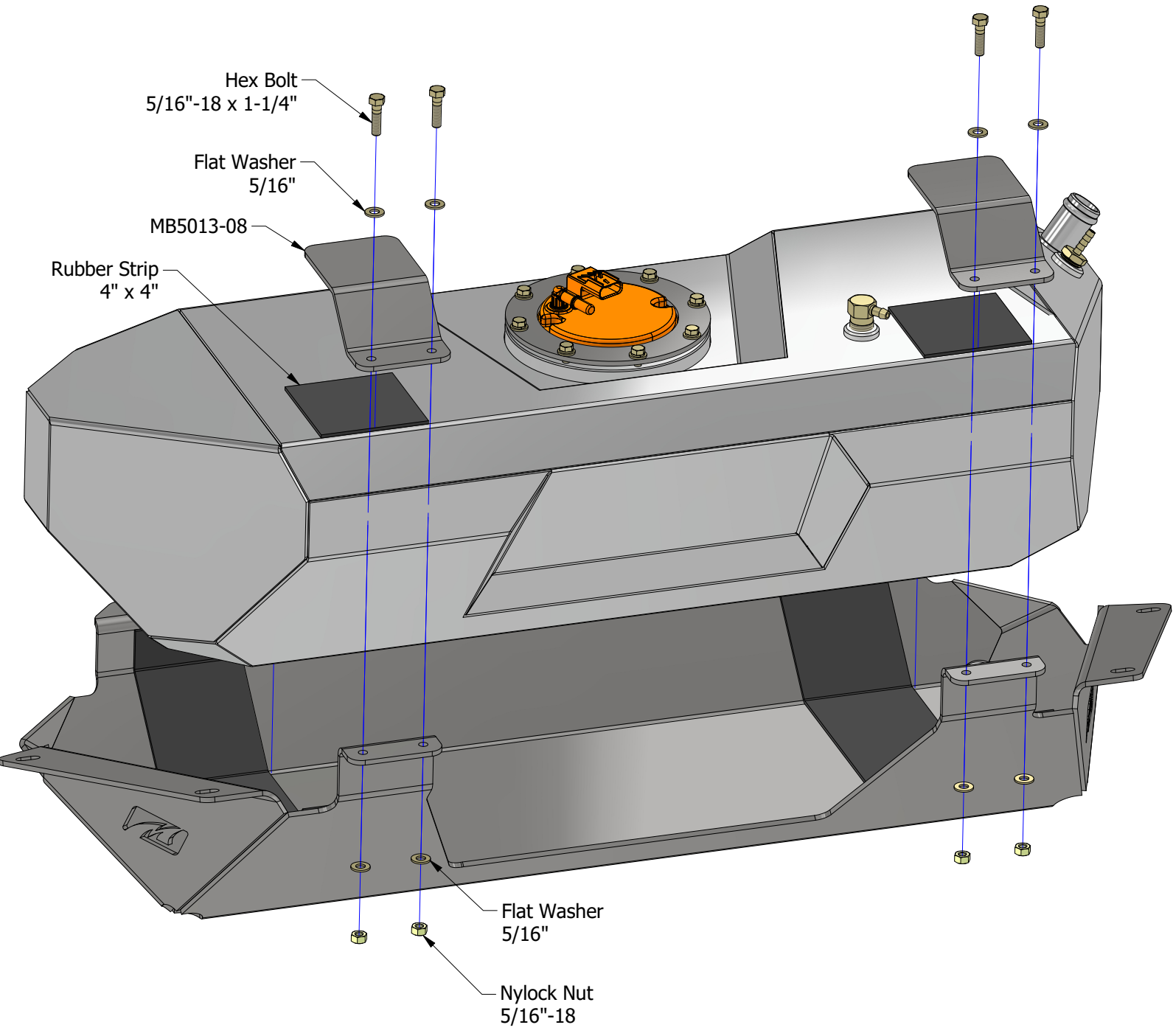
MB5013 - Assembly Instructions JKU Fuel Tank & Skid for Back Half Kit

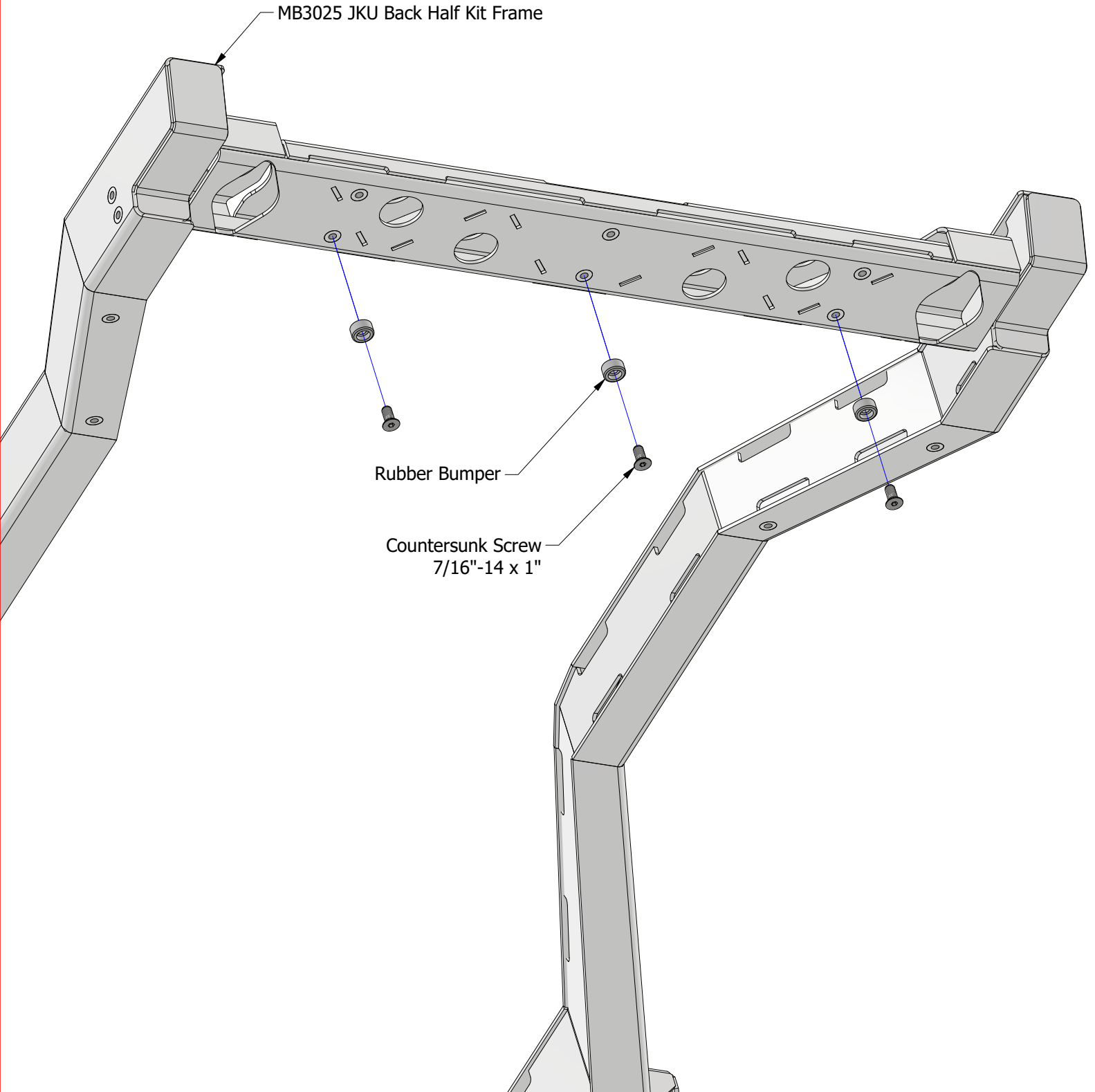
**STEP 5
Assemble Aluminum Tank**

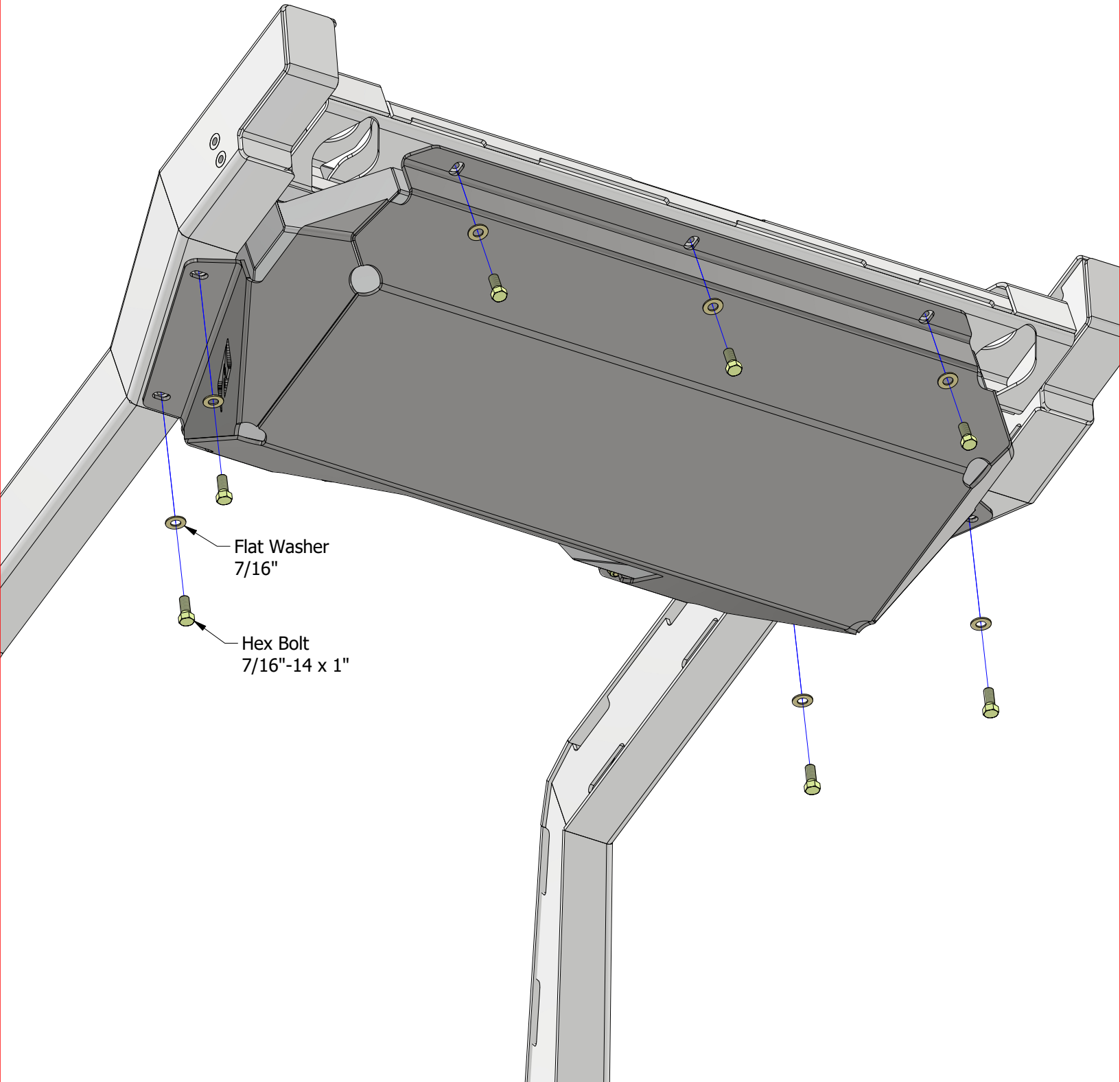


MB5013 - Assembly Instructions JKU Fuel Tank & Skid for Back Half Kit

**STEP 6
Assemble Tank with Skid**



MB5013 - Assembly Instructions JKU Fuel Tank & Skid for Back Half Kit**STEP 7**
Install Rubber Bumpers to Back Half Kit Frame

MB5013 - Assembly Instructions JKU Fuel Tank & Skid for Back Half Kit**STEP 8**
Install Tank & Skid to Back Half Kit Frame

MB5013 - Assembly Instructions JKU Fuel Tank & Skid for Back Half Kit

**STEP 9
Modify EVAP & Fuel Filler (Optional)**

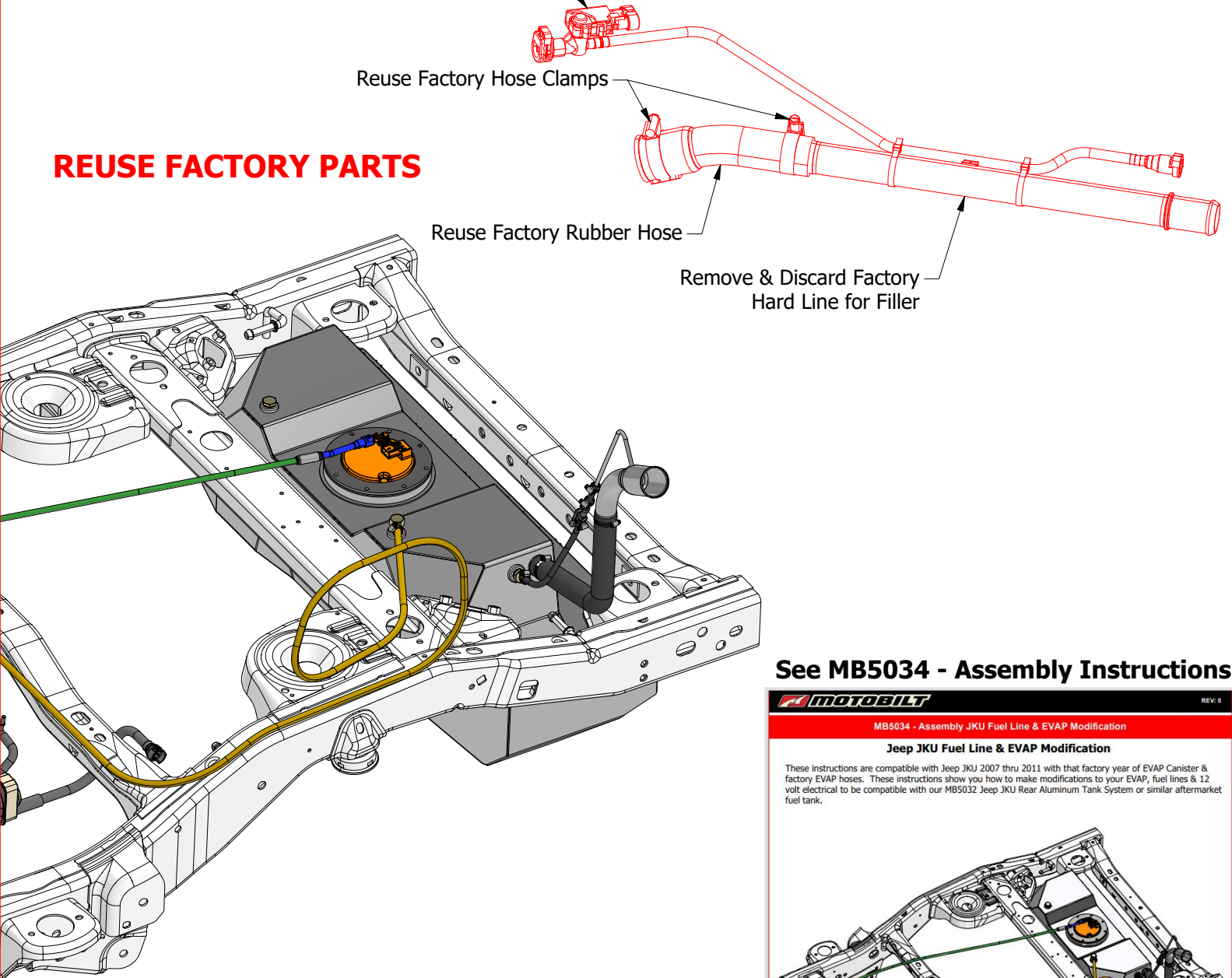
REUSE FACTORY PARTS

Reuse Factory Purge Valve

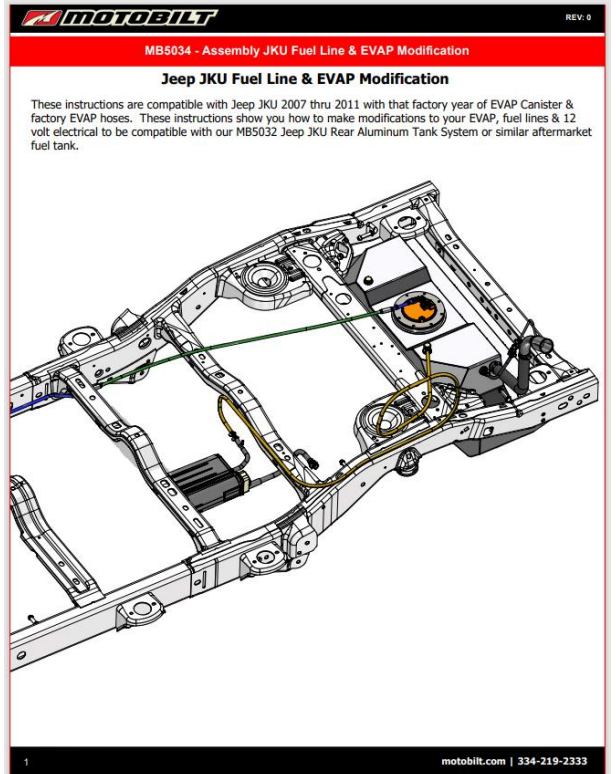
Reuse Factory Hose Clamps

Reuse Factory Rubber Hose

Remove & Discard Factory
Hard Line for Filler



See MB5034 - Assembly Instructions



NOTE: MB5034 EVAP Kit works with both factory frame & MB3025 Back Half Kit Frame

If you want your EVAP & emissions to function using your factory engine, then consider purchasing & installing our MB5034 JK/JKU Fuel Line & EVAP Modification kit (sold separately).

If you are using an aftermarket engine without EVAP & emissions, then you can omit this step. You can still modify your factory fuel filler & hose components. Use MB5034 - Assembly Instructions as a guide for modifying your fuel filler hose.