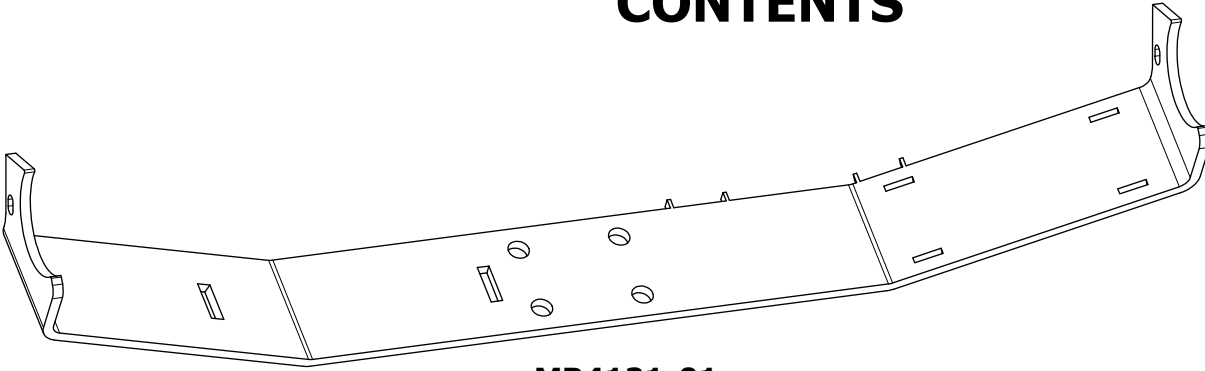
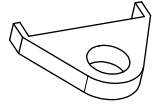


MB4121 Axle Truss, ECGS Front Dana 80

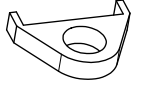
CONTENTS



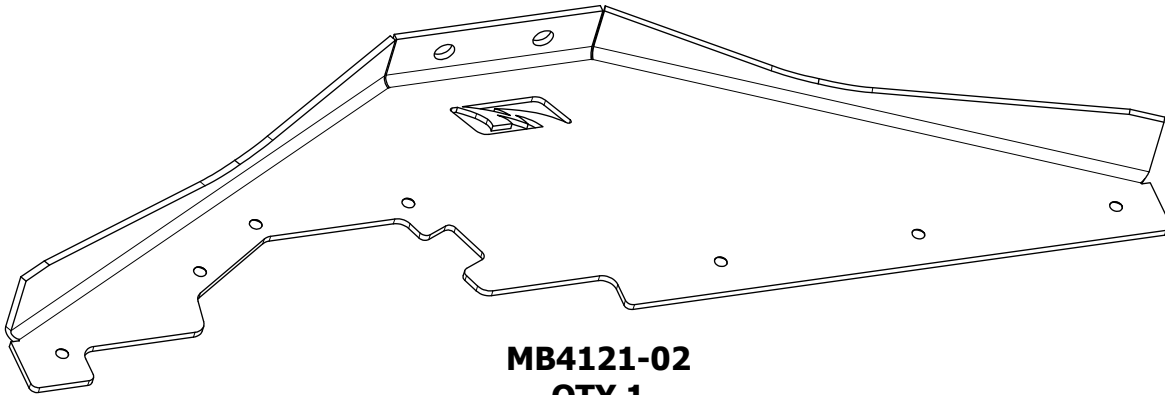
**MB4121-01
QTY 1**



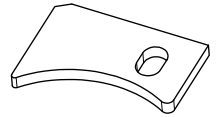
**MB4121-10
QTY 1**



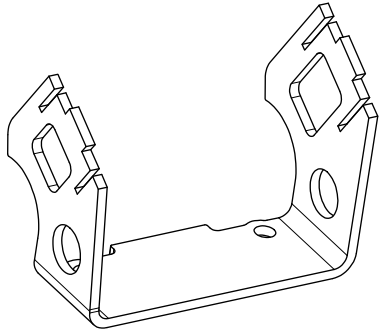
**MB4121-11
QTY 1**



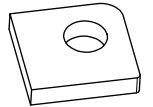
**MB4121-02
QTY 1**



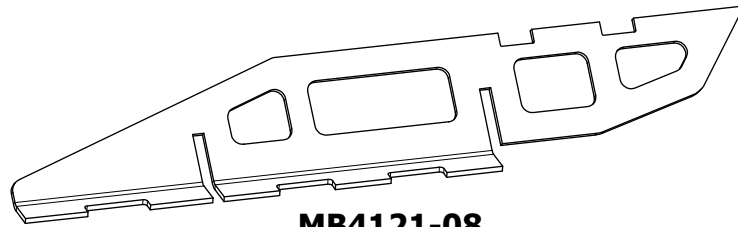
**MB4121-12
QTY 2**



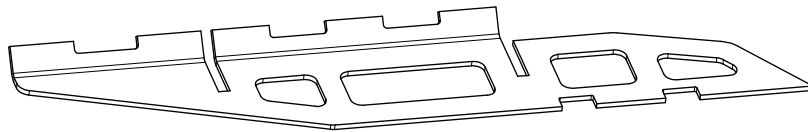
**MB4121-03
QTY 1**



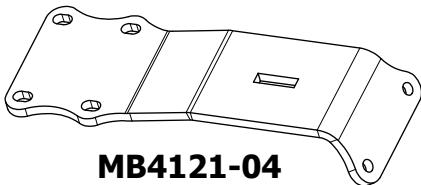
**MB4121-13
QTY 2**



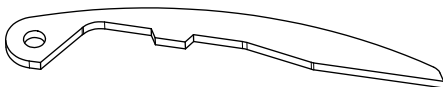
**MB4121-08
QTY 1**



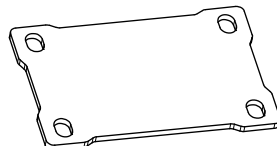
**MB4121-08_MIR
QTY 1**



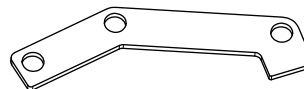
**MB4121-04
QTY 1**



**MB4121-05
QTY 1**



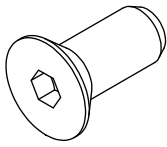
**MB4121-06
QTY 1**



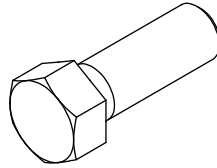
**MB4121-07
QTY 1**



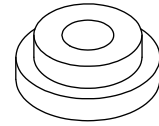
**MB4121-09
QTY 2**

MB4121 Axle Truss, ECGS Front Dana 80**CONTENTS**

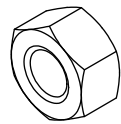
COUNTERSUNK SCREW
7/16"-14 x 1" LONG
QTY 8



HEX BOLT
7/16"-14 x 1-1/4" LONG
QTY 10



WELD NUT
7/16"-14
QTY 10

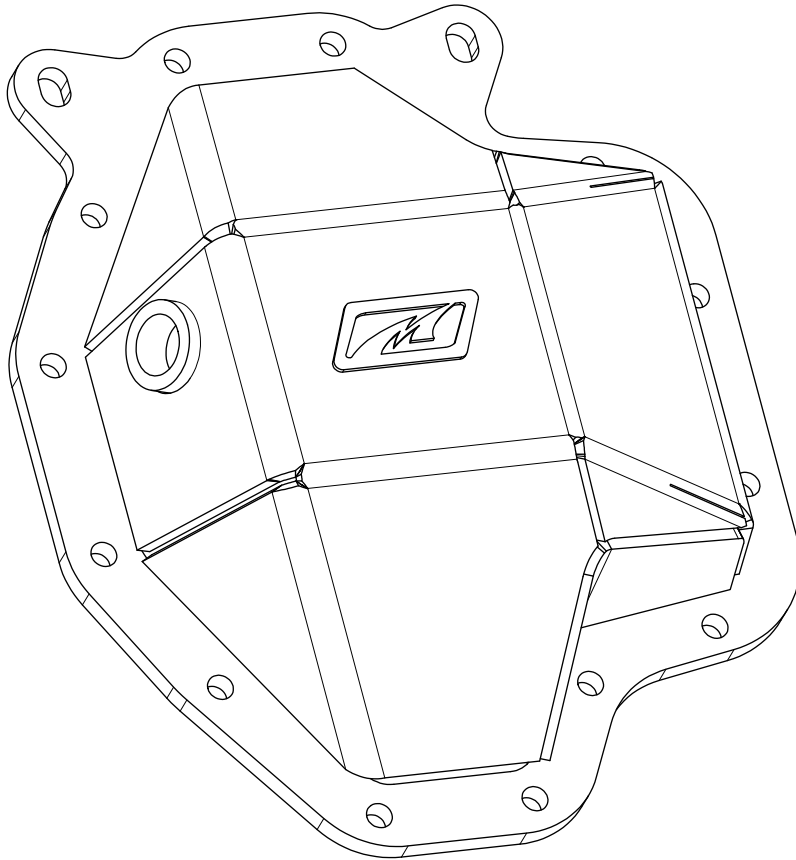


NYLOCK NUT
7/16"-14
QTY 2

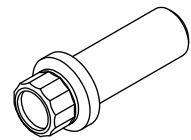


FLAT WASHER
7/16"
QTY 12

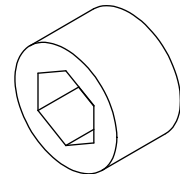
MB4121 Axle Truss, ECGS Front Dana 80

CONTENTS

**MB4125
ECGS D80 DIFF COVER FOR MB4121
QTY 1**



**12 POINT BOLT
3/8"-16 x 1" LONG
QTY 14**



**THREADED BUNG
FOR DIFF COVER
QTY 1**

MB4121 Axle Truss, ECGS Front Dana 80

PREFACE

This kit is specifically designed to work with a front steer Dana 80 1 ton axle from East Coast Gear & Supply (ECGS). Contact ECGS for axle information & purchasing.

<https://eastcoastgearsupply.com/>

This kit is also designed to work with PSC Hydraulic Steering Rams. Contact PSC for hydraulic steering components.

<https://www.pscmotorsports.com/>

The function of this kit is to provide a heavy duty mounting location for a full hydro steering ram on an ECGS Dana 80 1 ton front axle, while also providing a top flat mounting surface for you to install your own front upper link mounts.

We recommend the welding be performed by a qualified welder.

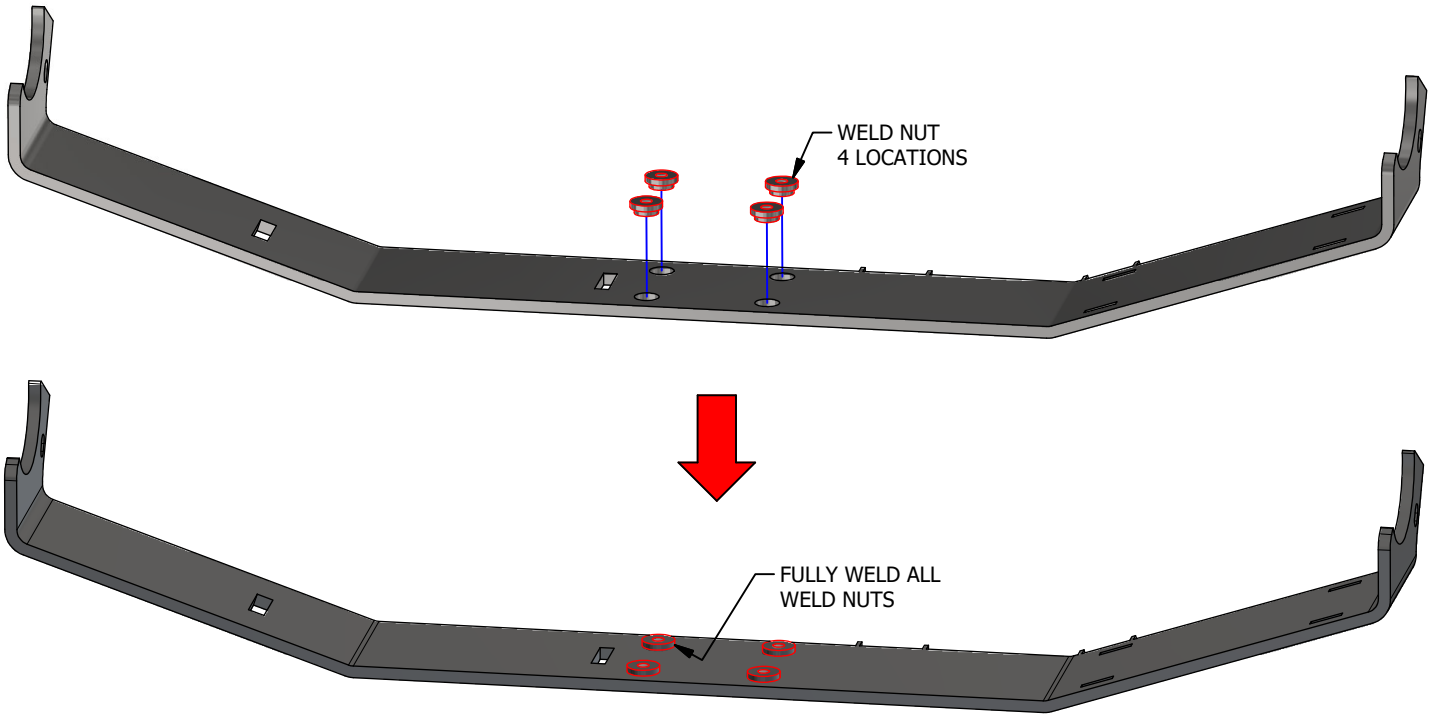
We recommend to tack weld & test fit all parts including your steering rams, steering linkages, shocks, upper & lower link mounts by cycling your suspension from full bump to full extension, as well as, cycling each side of the axle with your tires installed. Check that all parts of the suspension & steering function unimpeded. Once you are satisfied with the function of all components, disassemble the axle from the vehicle, fully weld all components included with this kit, then paint to your desired color.

For the purposes of these installation instructions, we only show how to install the components provided with this kit.

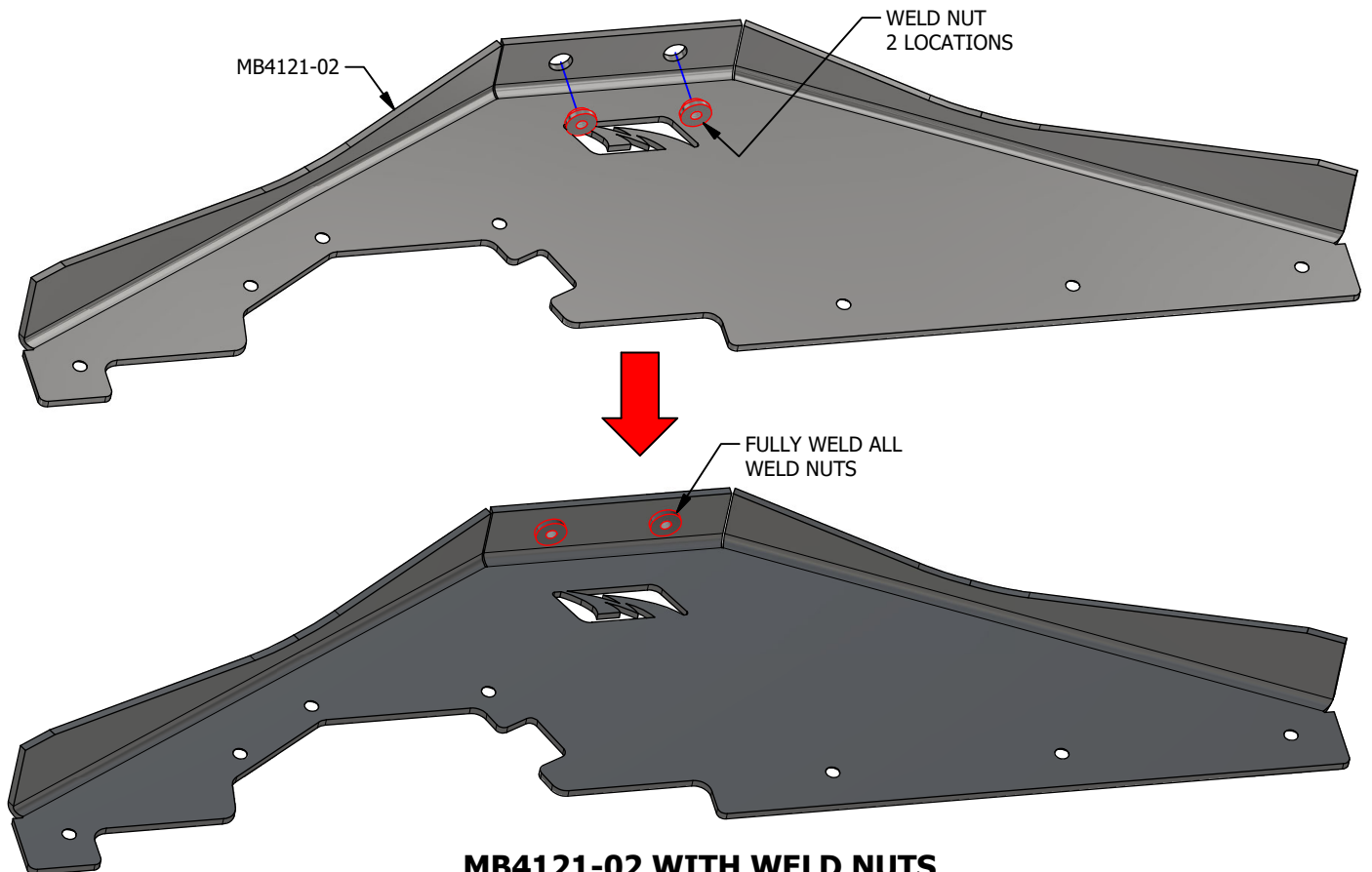
Protect all painted surfaces, glass, mirrors & trim from welding spatter using a fire proof blanket or similar protective masking. Have a fire extinguisher available.

MB4121 Axle Truss, ECGS Front Dana 80

STEP 1



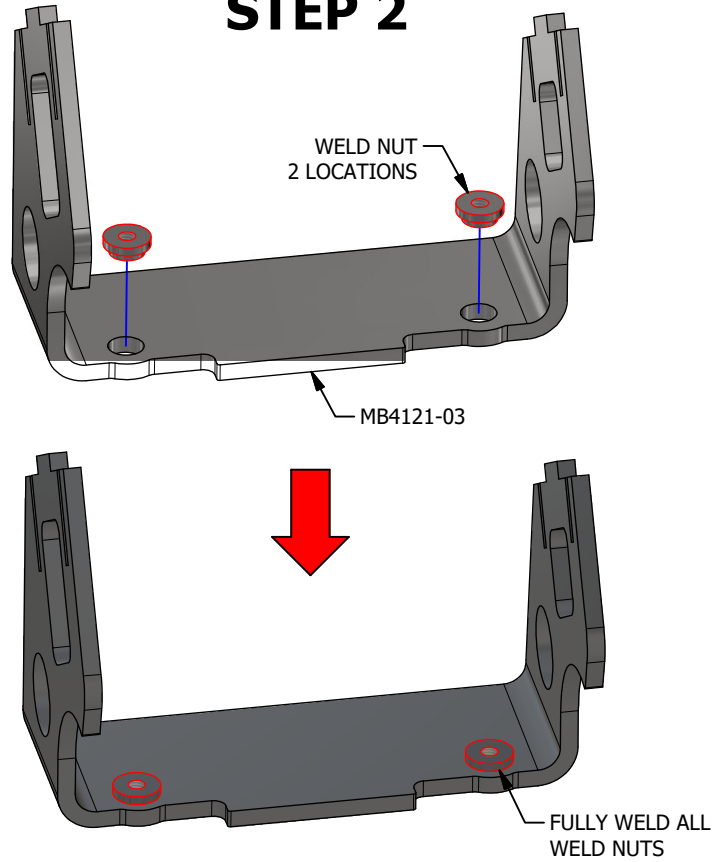
MB4121-01 WITH WELD NUTS



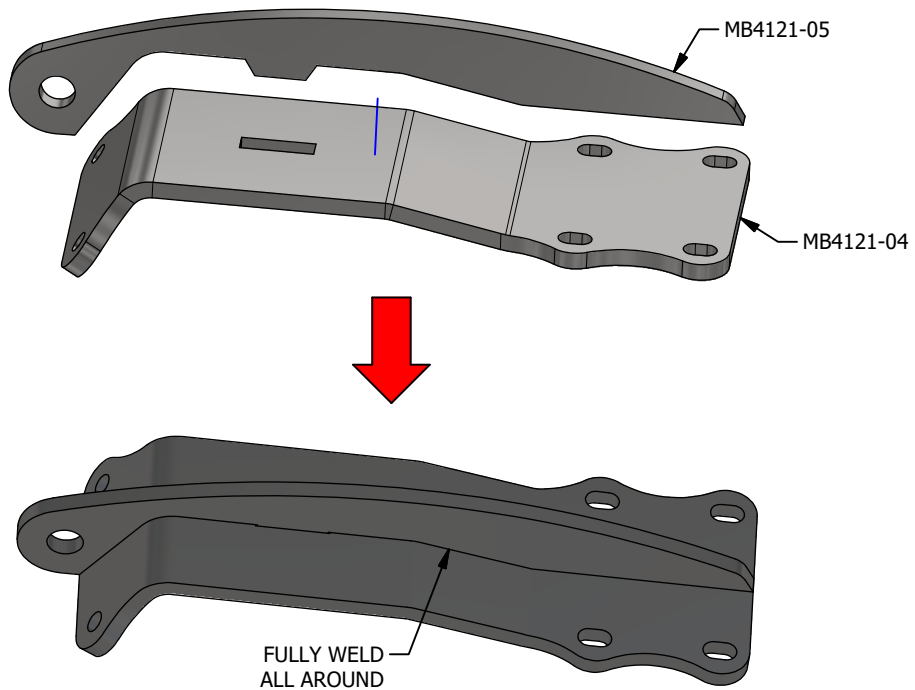
MB4121-02 WITH WELD NUTS

MB4121 Axle Truss, ECGS Front Dana 80

STEP 2



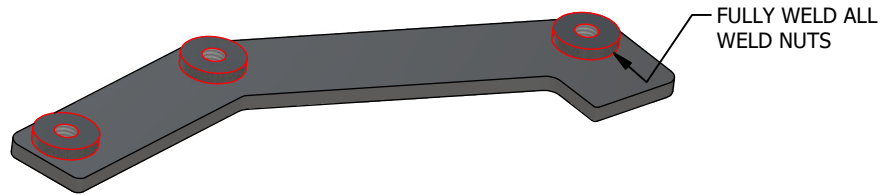
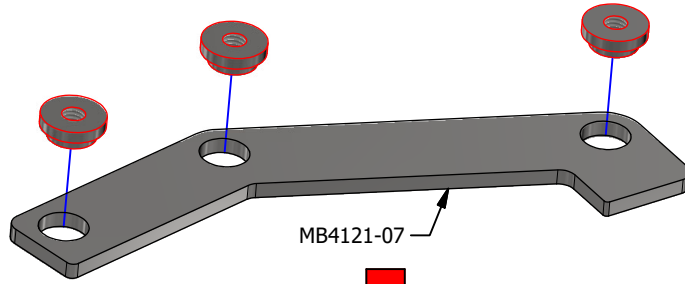
MB4121-03 WITH WELD NUTS



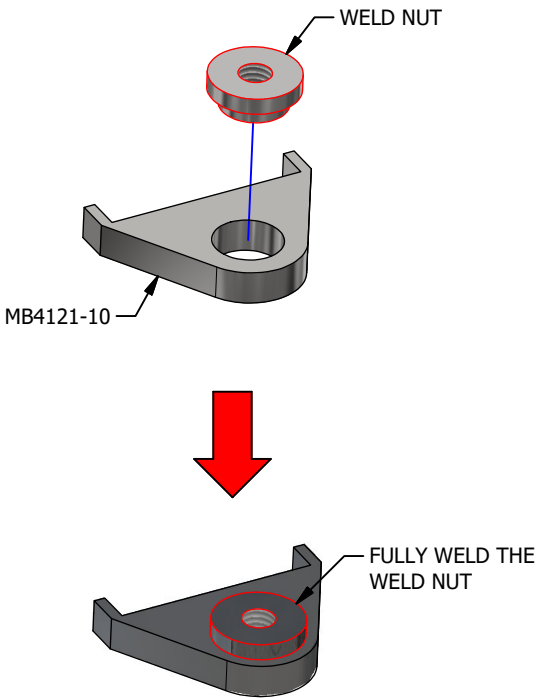
BRACKET WELDMENT

MB4121 Axle Truss, ECGS Front Dana 80

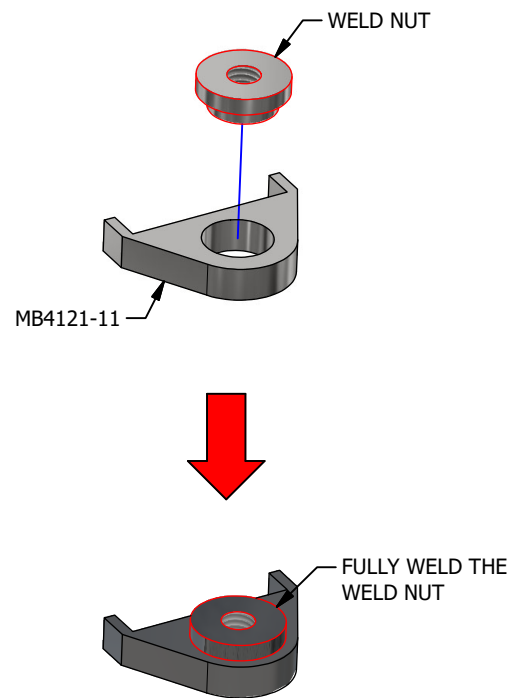
STEP 3



MB4121-07 WITH WELD NUTS



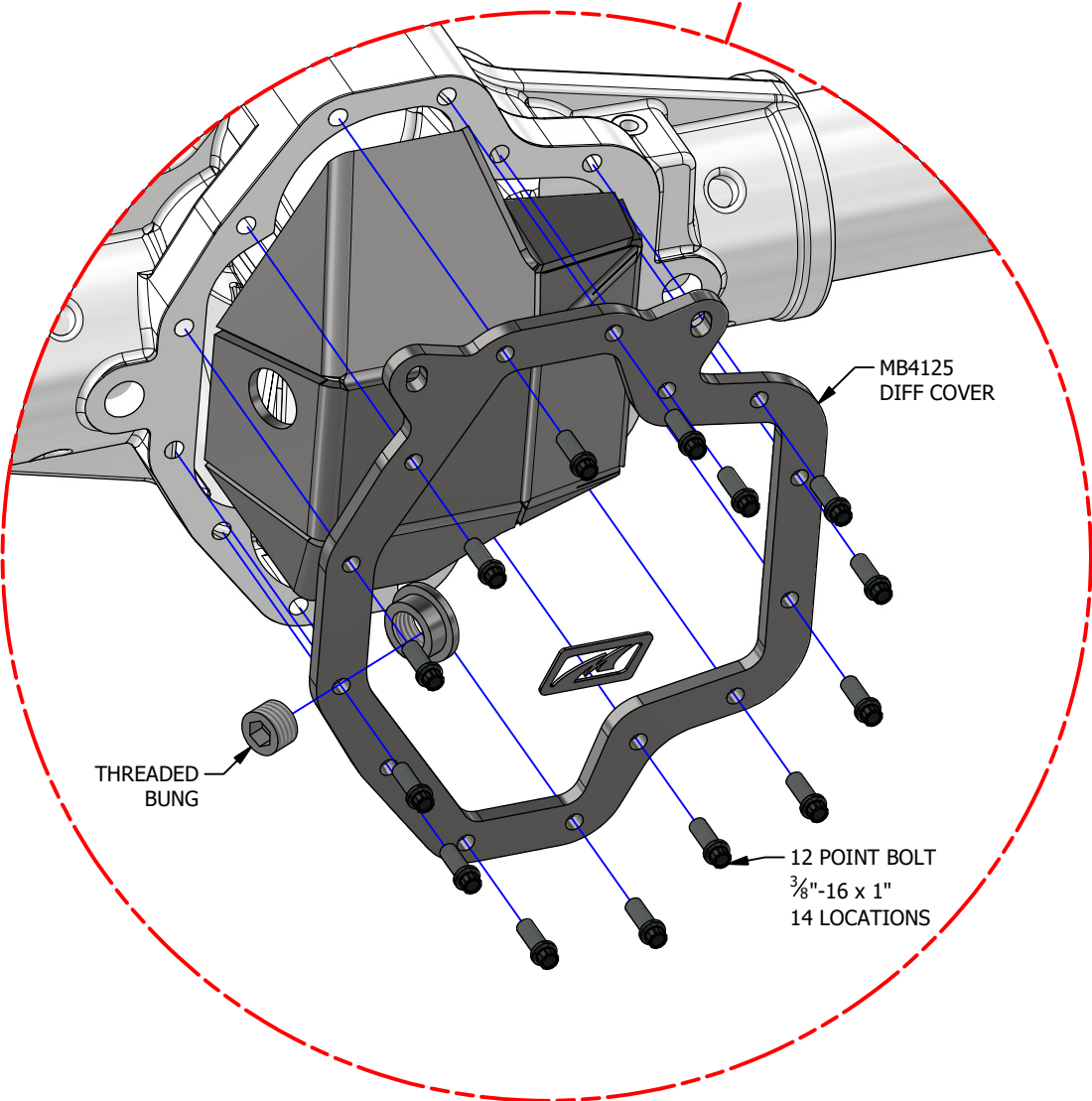
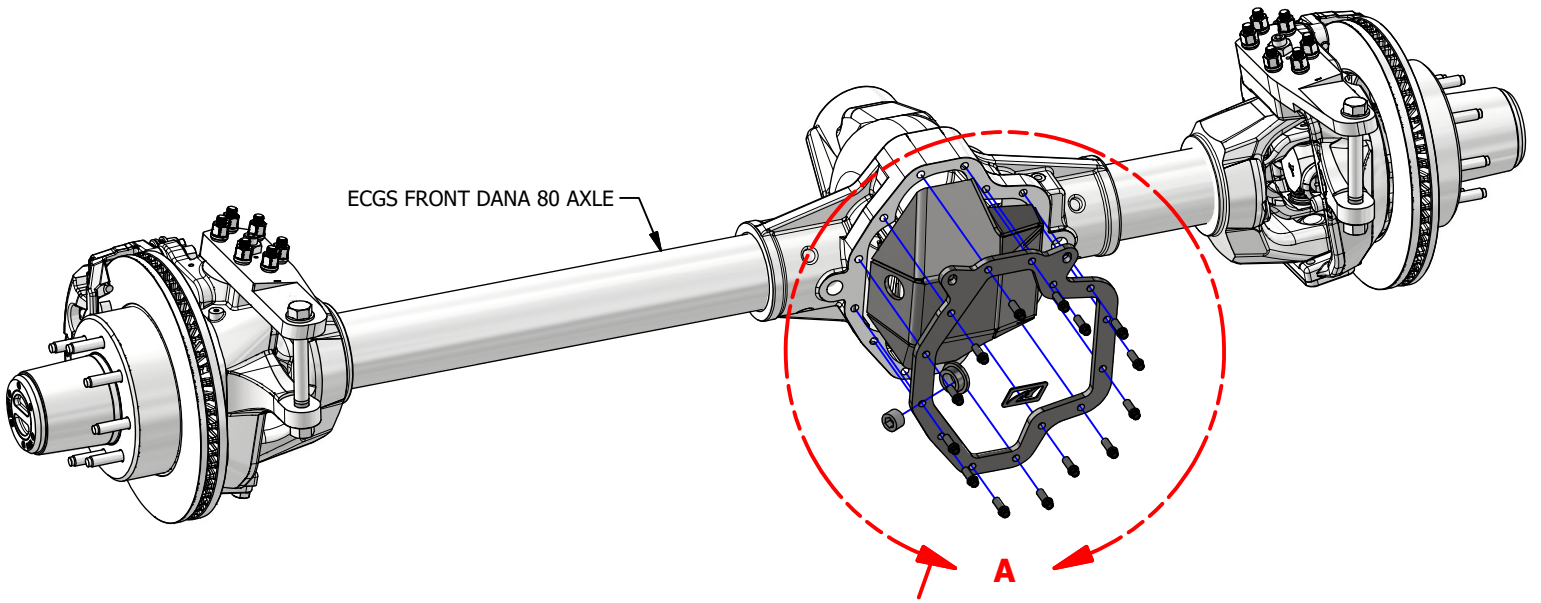
MB4121-10 WITH WELD NUTS



MB4121-11 WITH WELD NUTS

MB4121 Axle Truss, ECGS Front Dana 80

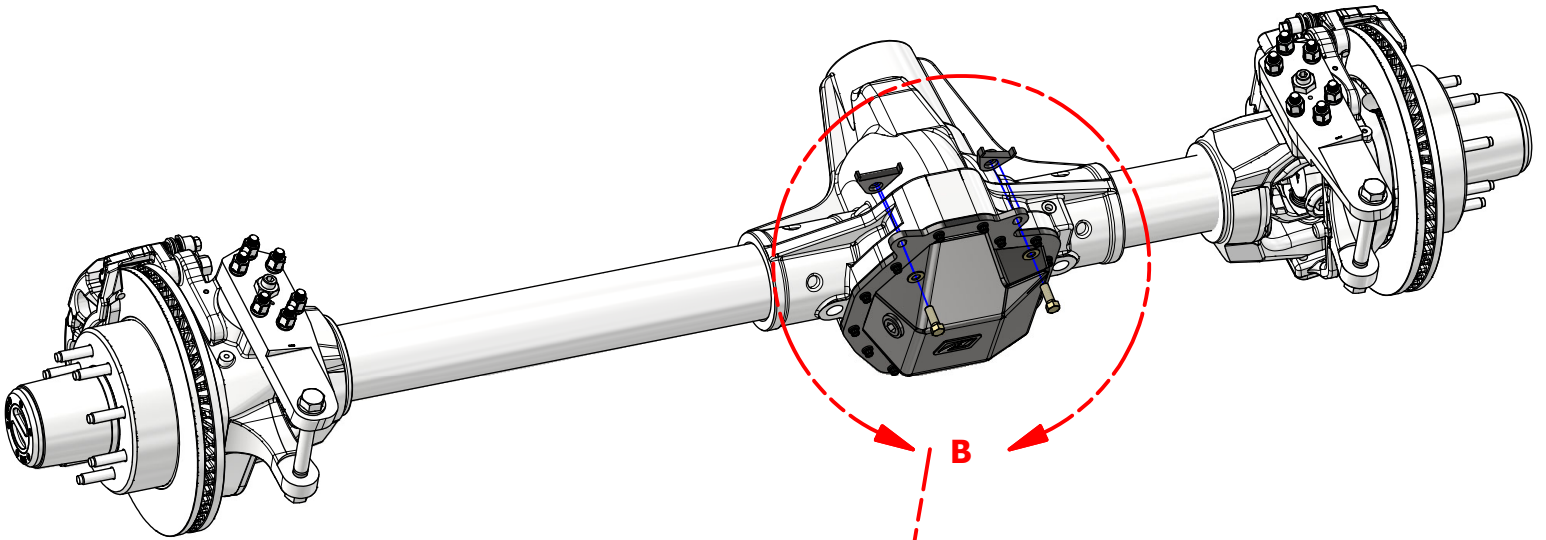
STEP 4



DETAIL A

MB4121 Axle Truss, ECGS Front Dana 80

STEP 5



MB4121-10 WITH WELD NUT

MB4121-11 WITH WELD NUT

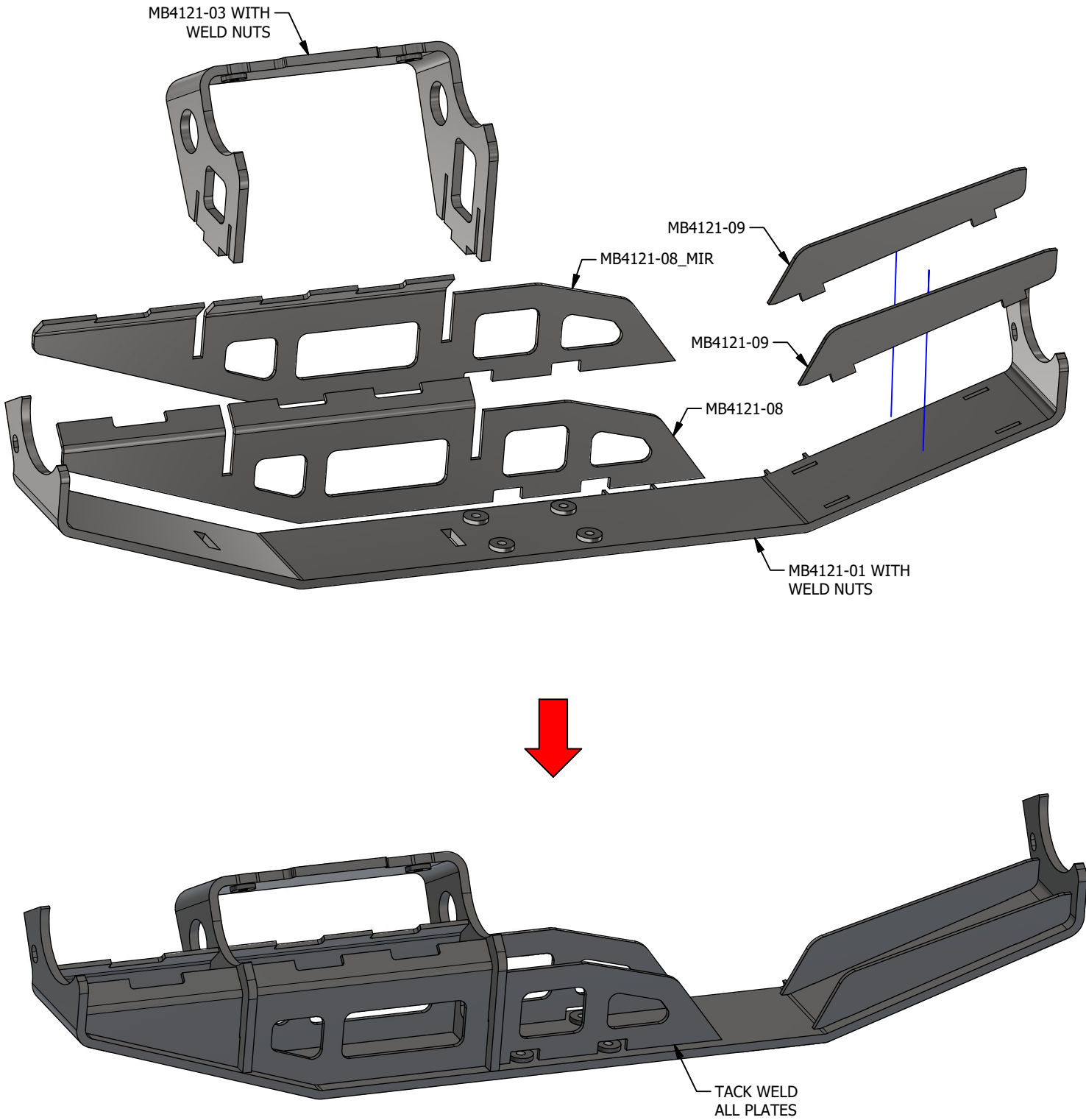
FLAT WASHER, $\frac{7}{16}$ "
2 LOCATIONS

HEX BOLT
 $\frac{7}{16}$ "-14 x 1- $\frac{1}{4}$ " LONG
2 LOCATIONS

DETAIL B

MB4121 Axle Truss, ECGS Front Dana 80

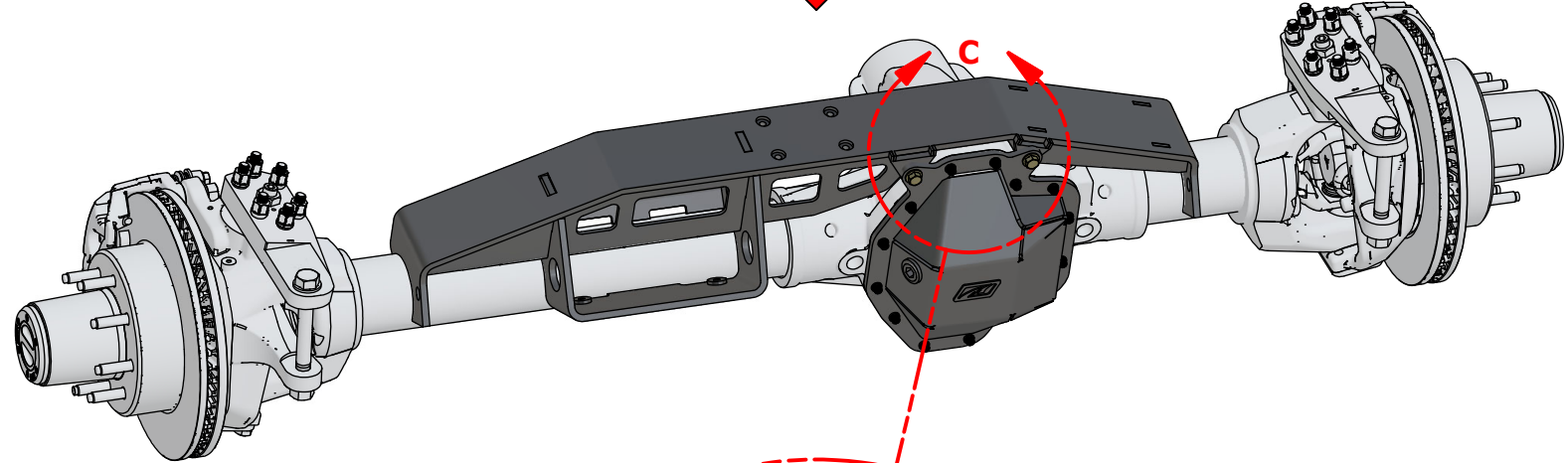
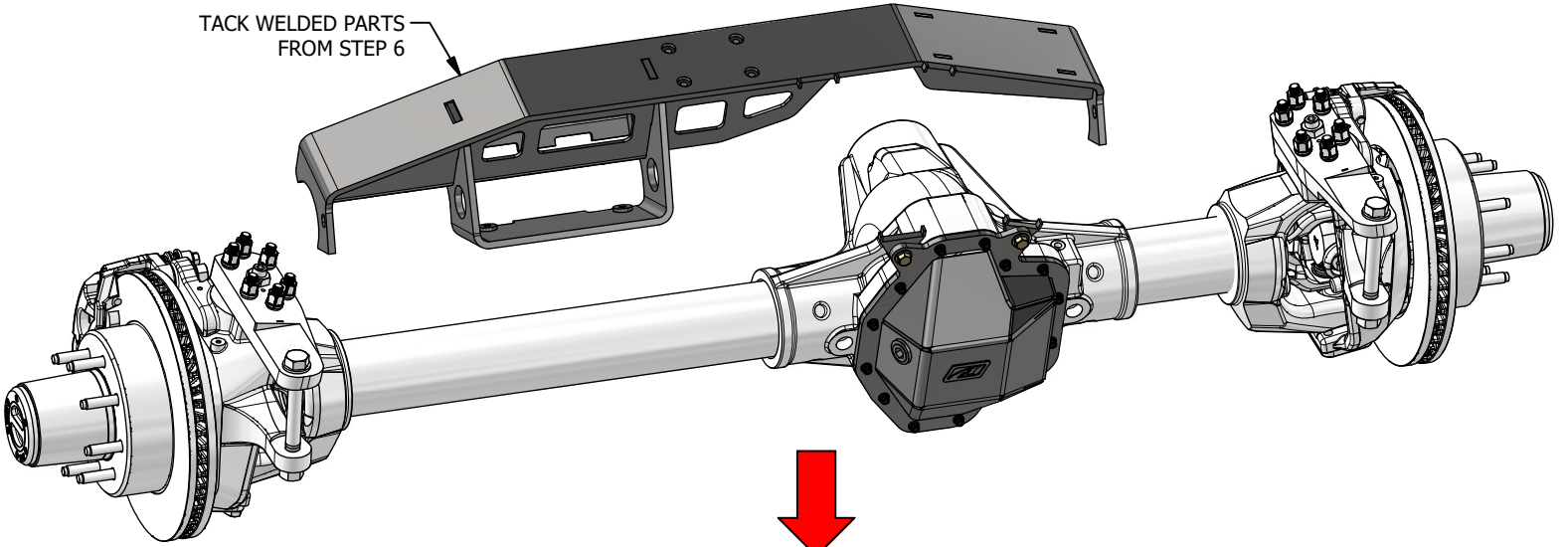
STEP 6



MB4121 Axle Truss, ECGS Front Dana 80

STEP 7

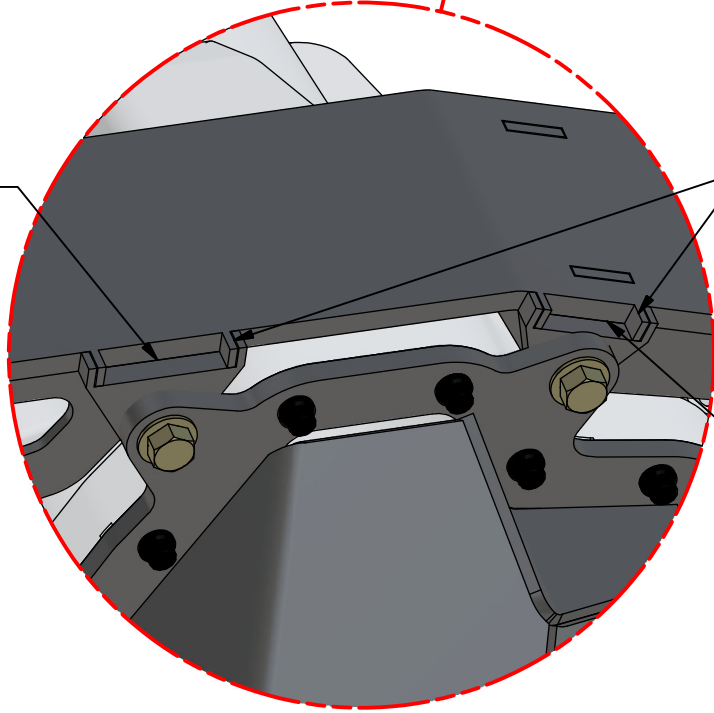
TACK WELDED PARTS
FROM STEP 6



TACK WELD

ALIGN TABS

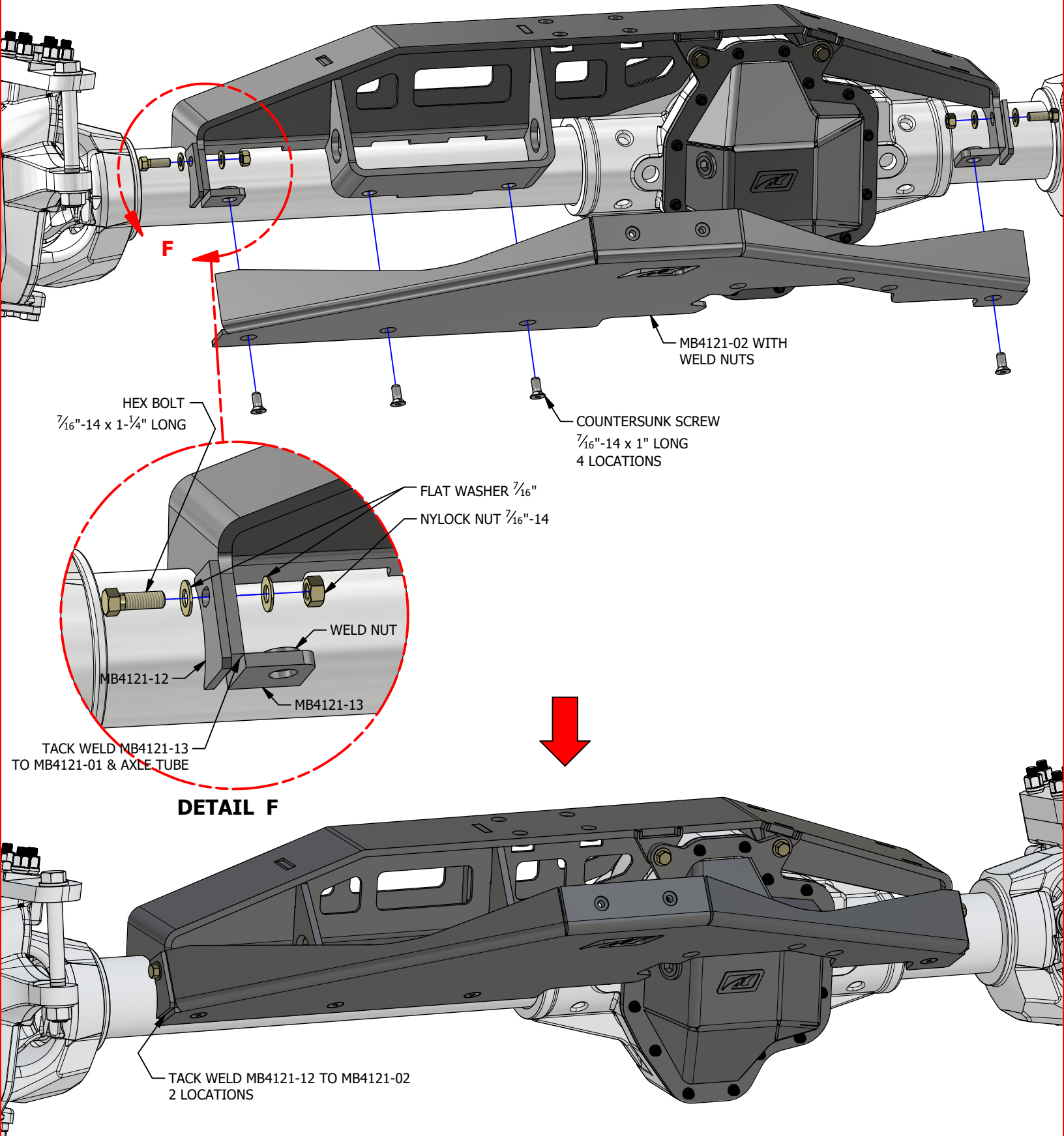
TACK WELD



DETAIL C

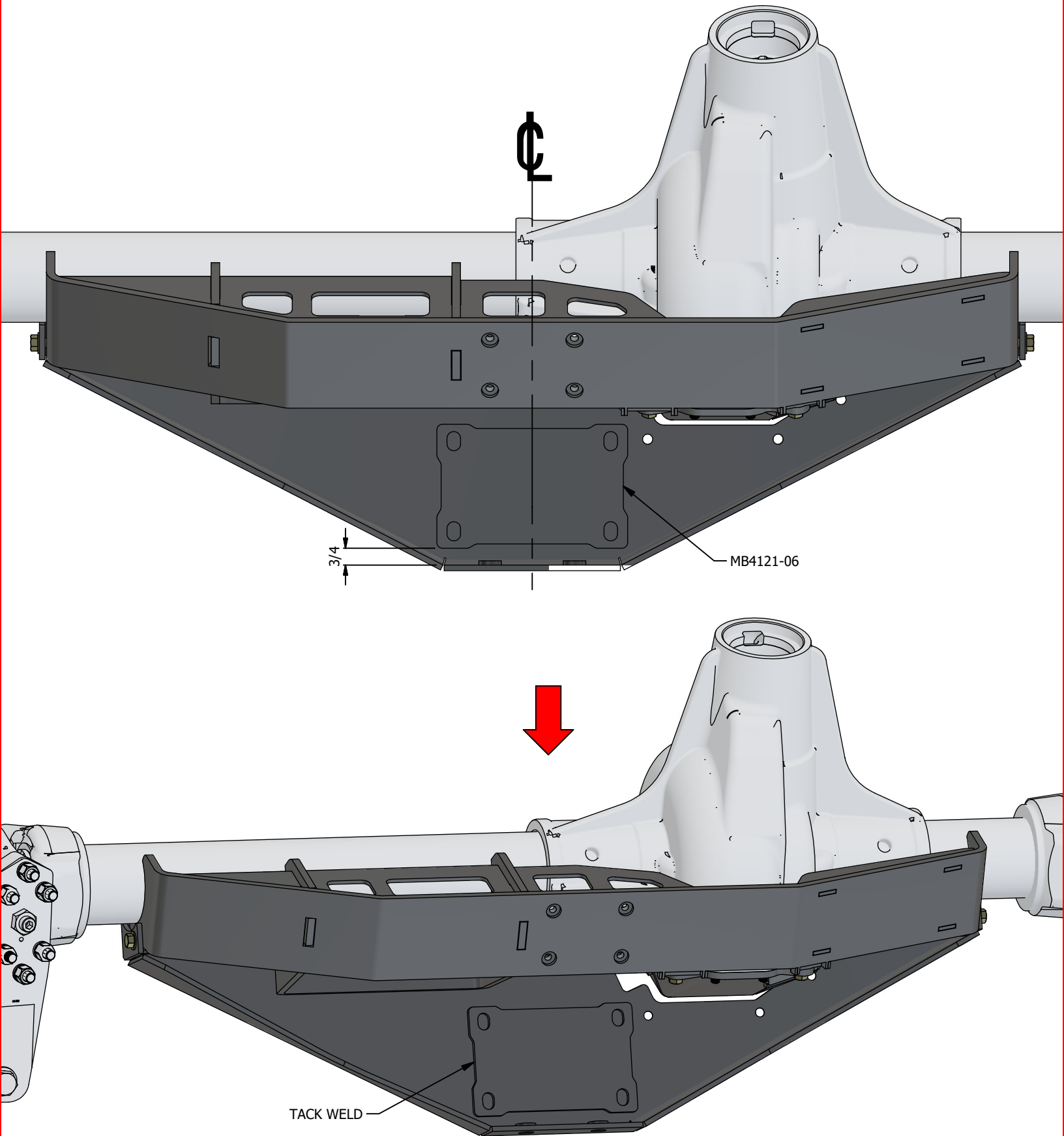
MB4121 Axle Truss, ECGS Front Dana 80

STEP 8



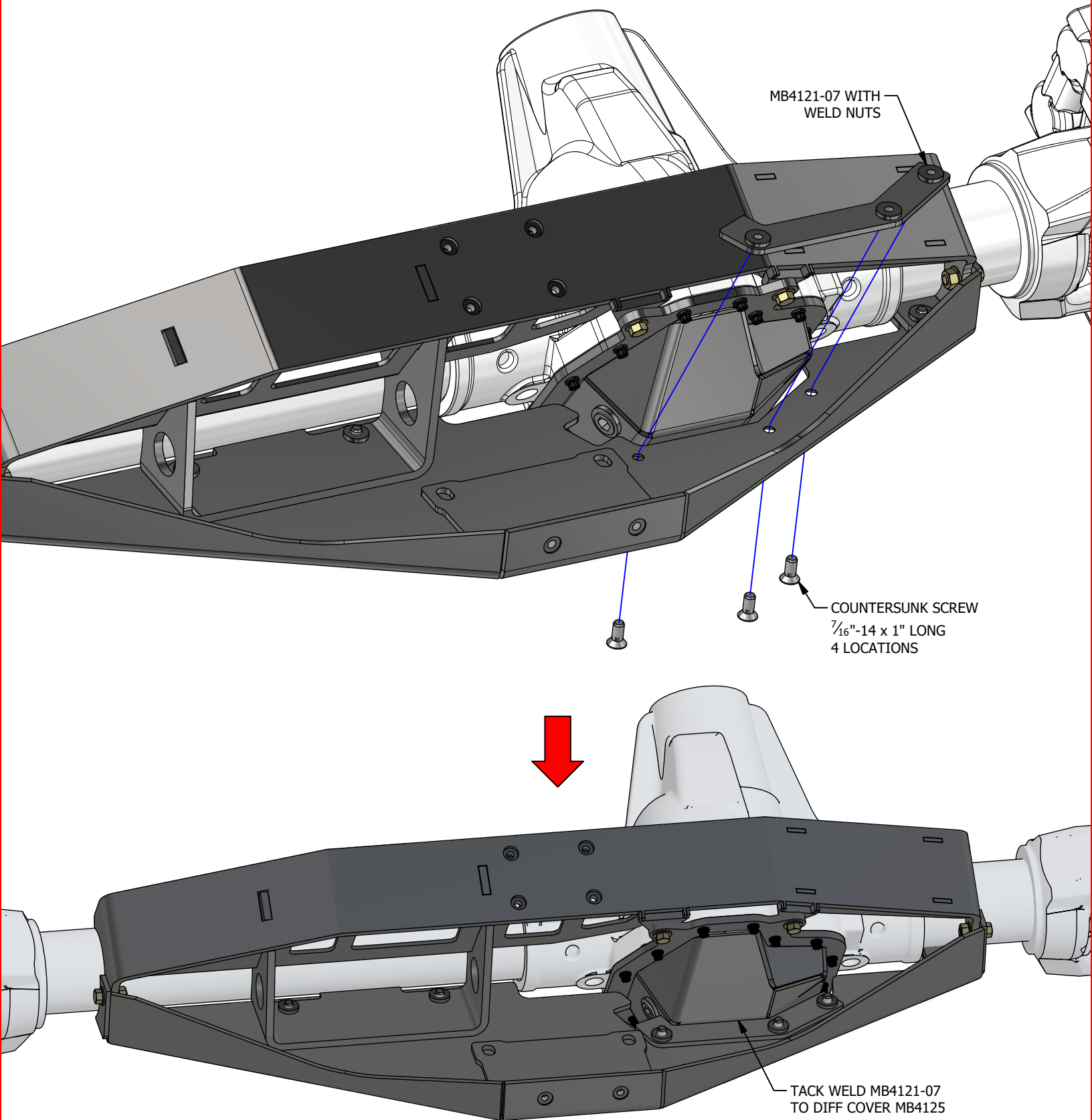
MB4121 Axle Truss, ECGS Front Dana 80

STEP 9



MB4121 Axle Truss, ECGS Front Dana 80

STEP 10

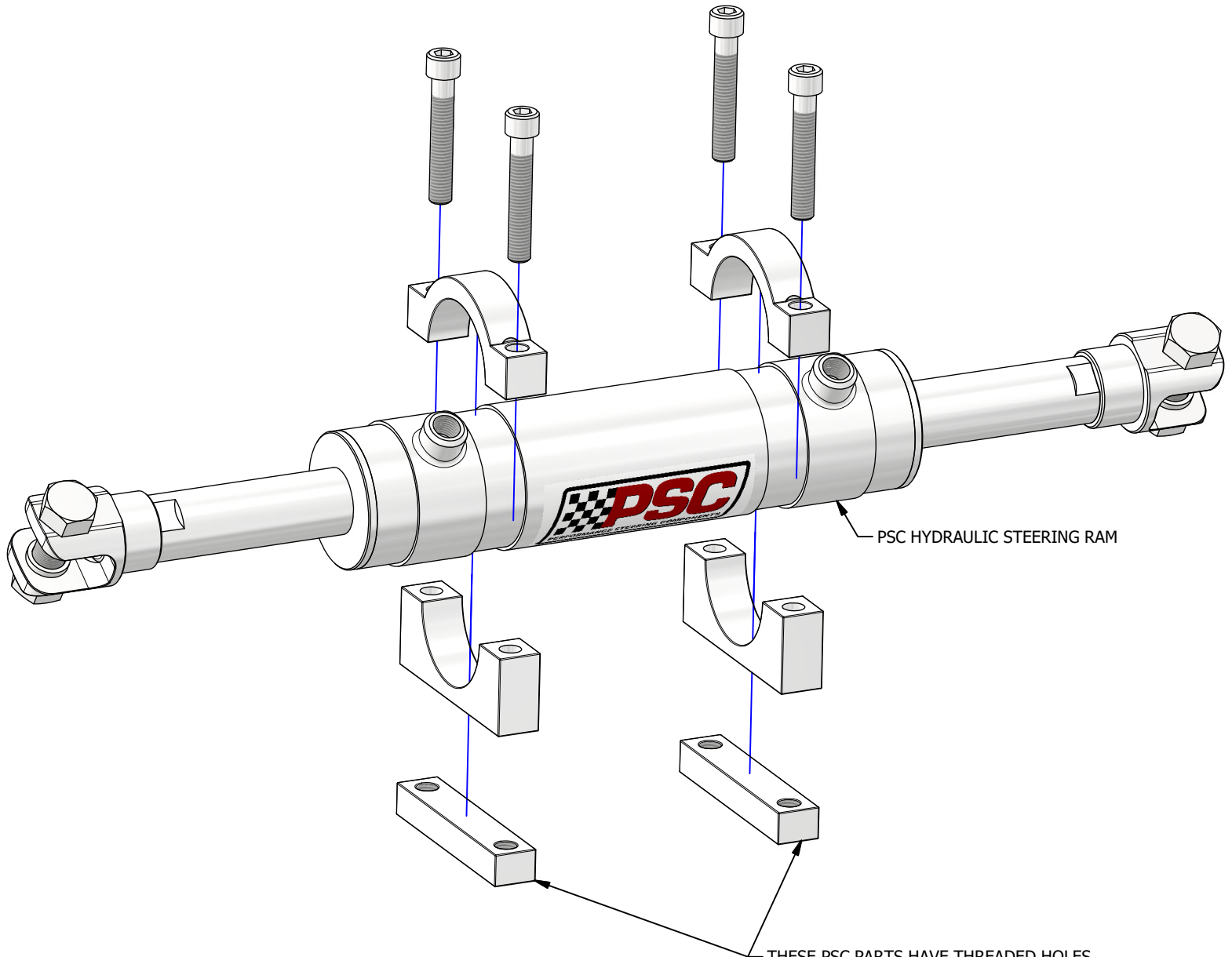


MB4121 Axle Truss, ECGS Front Dana 80

STEP 11

NOTE:

These are purchased parts NOT INCLUDED with this kit.



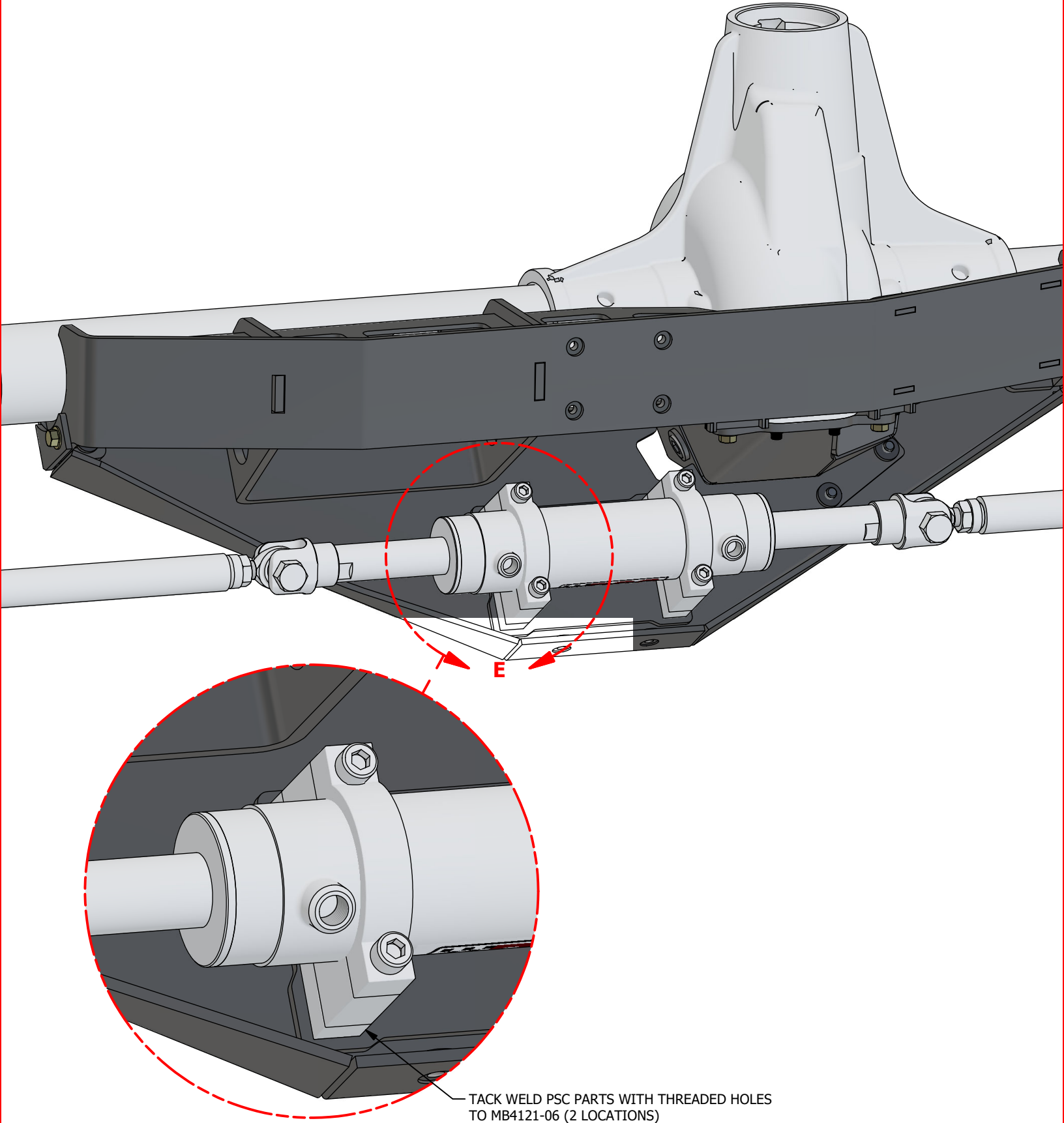
PSC HYDRAULIC STEERING RAM

THESE PSC PARTS HAVE THREADED HOLES.
THESE ARE THE PARTS THAT GET WELDED
TO MB4121-06.

PSC MOTORSPORTS #SC2212-07 (OR SIMILAR)

MB4121 Axle Truss, ECGS Front Dana 80

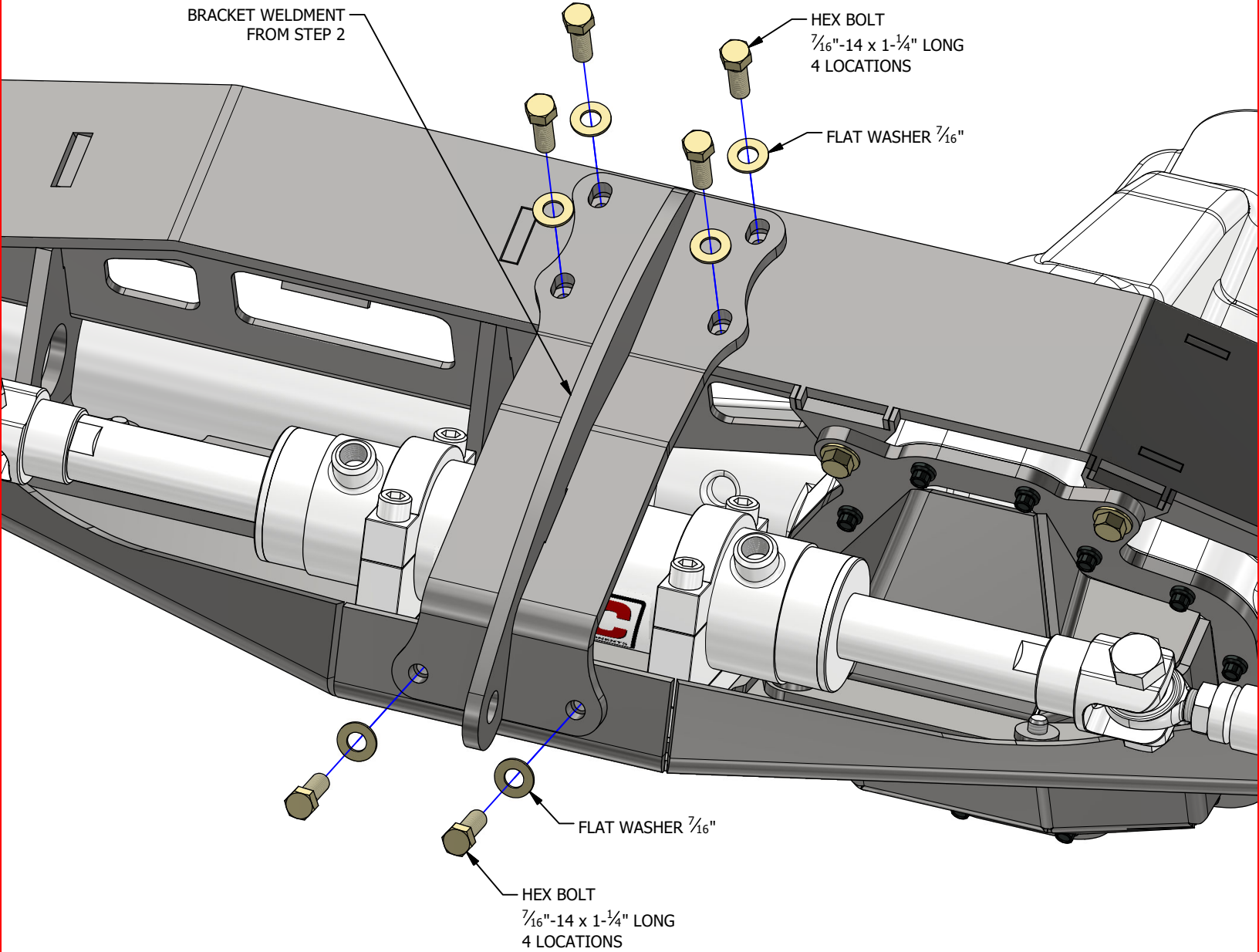
STEP 12



TACK WELD PSC PARTS WITH THREADED HOLES TO MB4121-06 (2 LOCATIONS)

MB4121 Axle Truss, ECGS Front Dana 80

STEP 13



MB4121 Axle Truss, ECGS Front Dana 80

CYCLE ALL STEERING & SUSPENSION COMPONENTS THEN FINAL WELDING

Once all parts are installed & tack welded, along with your shocks, front upper & front lower links, cycle the suspension with the tires installed. Check for binding & adjust when necessary.

Disconnect axle from vehicle. Fully weld all axle truss parts shown.

Paint all raw metal.

Assemble fully welded axle with new truss back into the vehicle.