

Dwg/Part No:

MB4058-NG

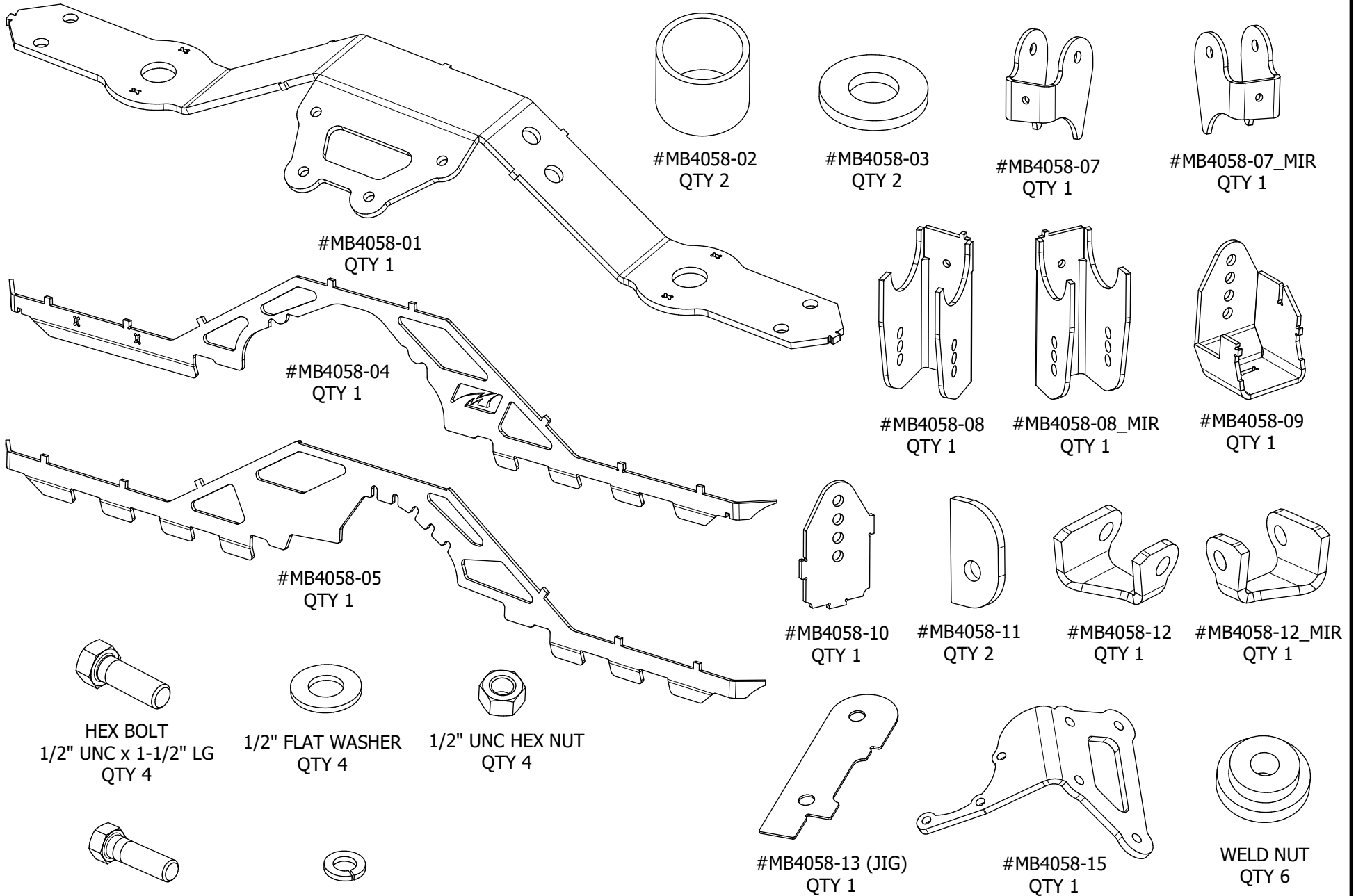
Description:

JK 1 Ton Axle Swap w/GM 14 Bolt

Sheet No: **1** of **16**

Rev No: **0**

Mat'l: **No Pinion Guard**

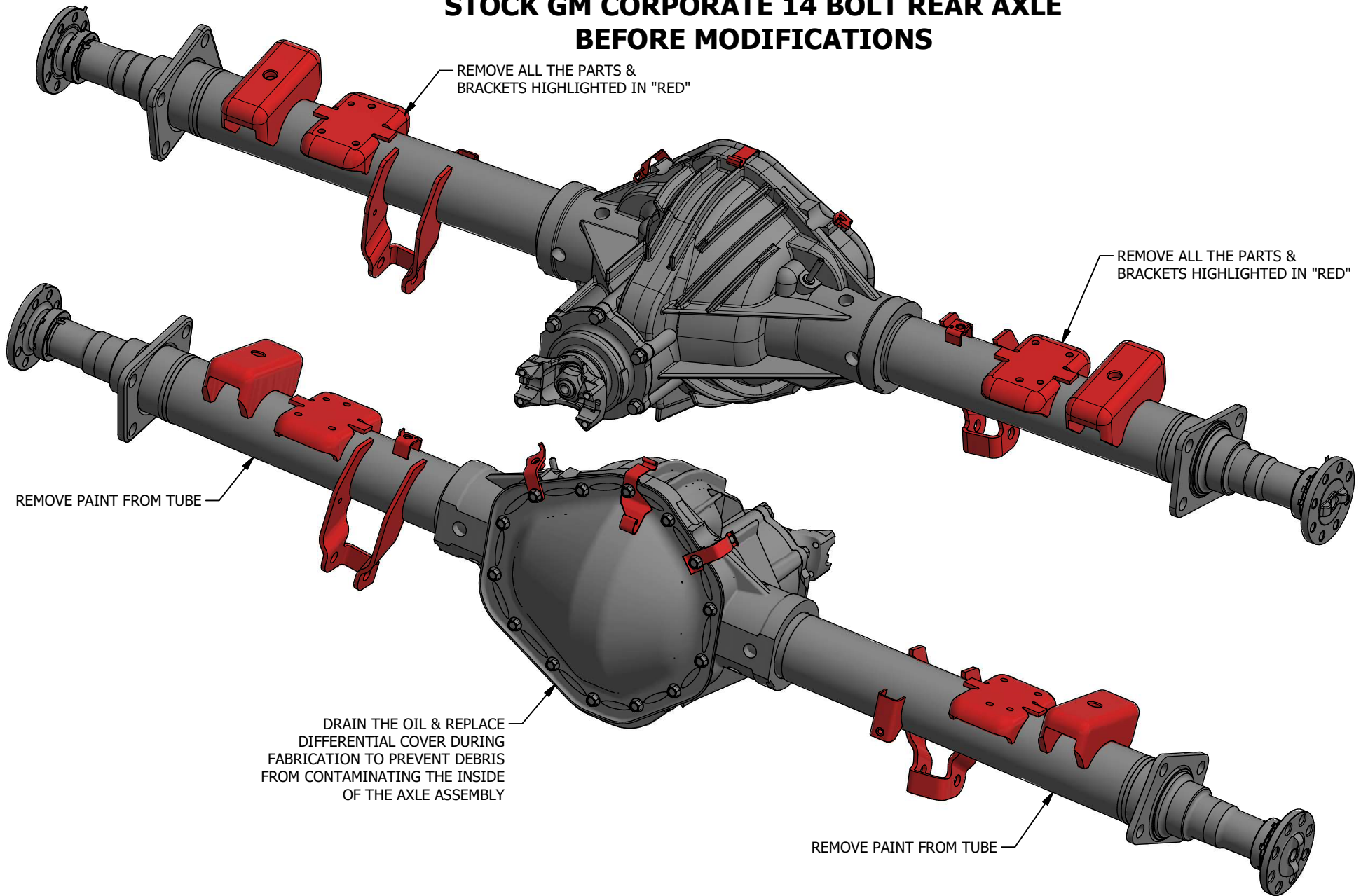


Dwg/Part No:
MB4058-NG
 Description:
JK 1 Ton Axle Swap w/GM 14 Bolt

Sheet No: **2** of **16**
 Rev No: **0**

Mat'l: **No Pinion Guard**

STOCK GM CORPORATE 14 BOLT REAR AXLE BEFORE MODIFICATIONS



STEP #1



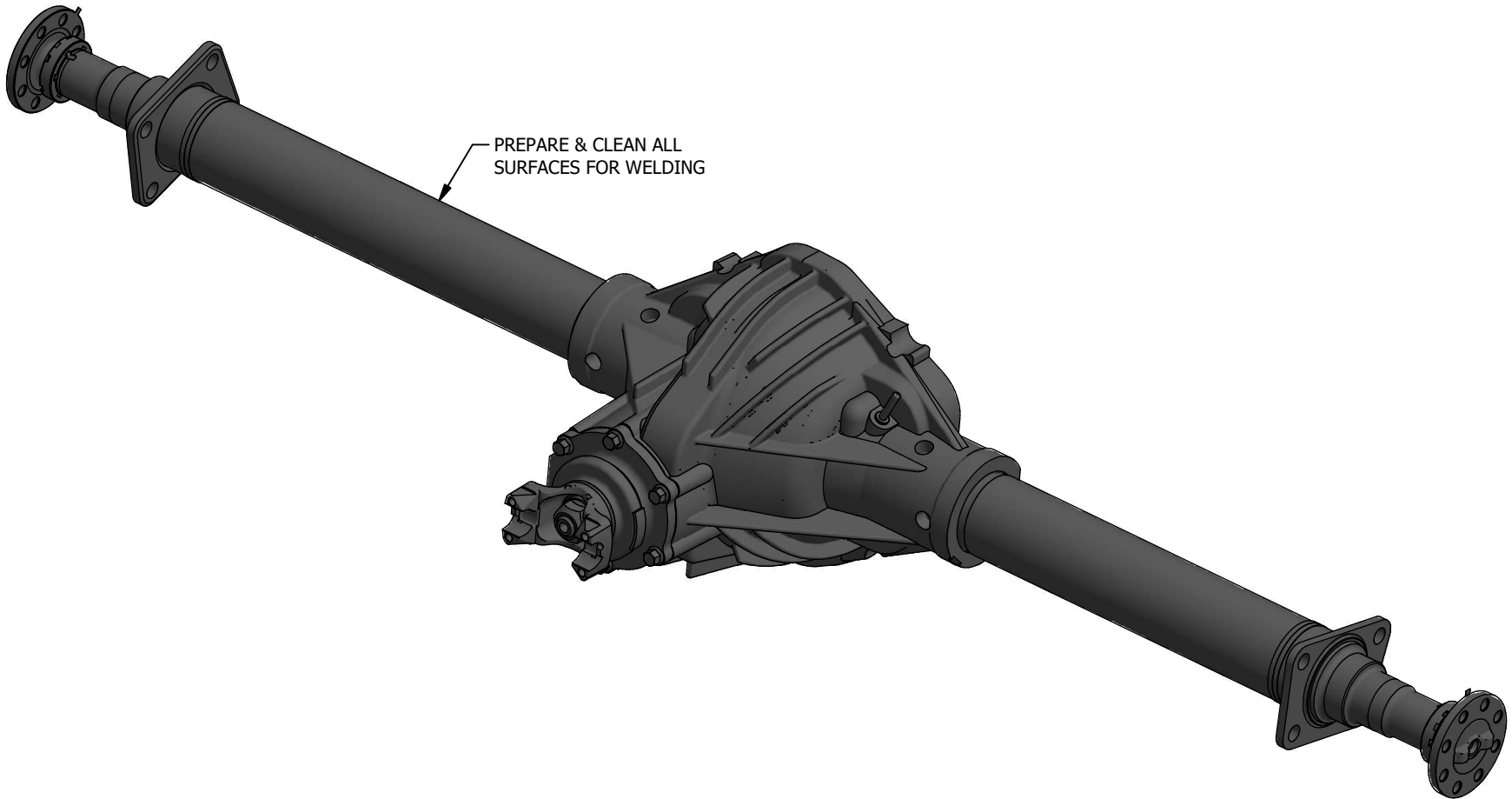
Dwg/Part No:

MB4058-NG

Description:

JK 1 Ton Axle Swap w/GM 14 BoltSheet No: **3** of **16**Rev No: **0**Mat'l: **No Pinion Guard**

STOCK GM CORPORATE 14 BOLT REAR AXLE AFTER MODIFICATIONS

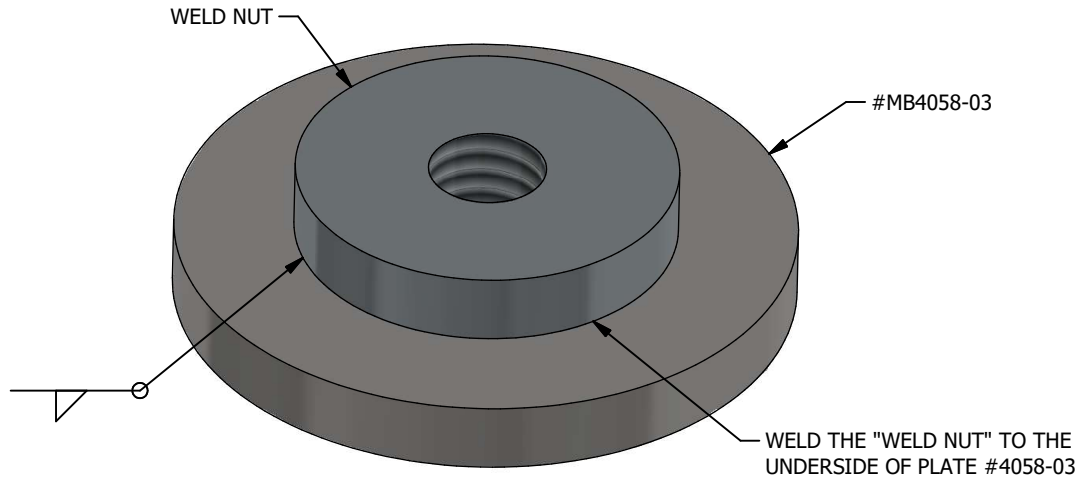


STEP #2



Dwg/Part No:
MB4058-NG
Description:
JK 1 Ton Axle Swap w/GM 14 Bolt

Sheet No: **4** of **16**
Rev No: **0**
Mat'l: **No Pinion Guard**



MAKE TWO (2) WELDMENTS AS SHOWN

STEP #3



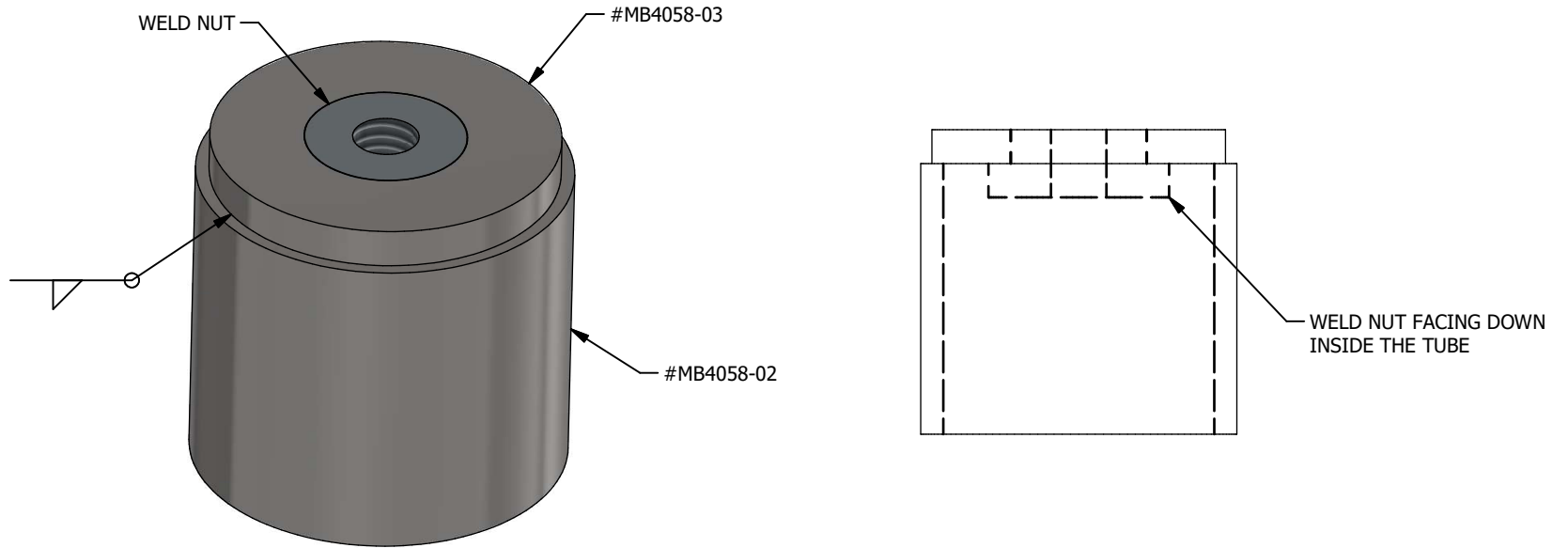
Dwg/Part No:
MB4058-NG
Description:
JK 1 Ton Axle Swap w/GM 14 Bolt

Sheet No: **5** of **16**

Rev No: **0**

Mat'l: **No Pinion Guard**

FLIP THE WELDED PARTS OVER FROM STEP #3,
THEN WELD TO TUBE #MB4058-02



MAKE TWO (2) WELDMENTS AS SHOWN

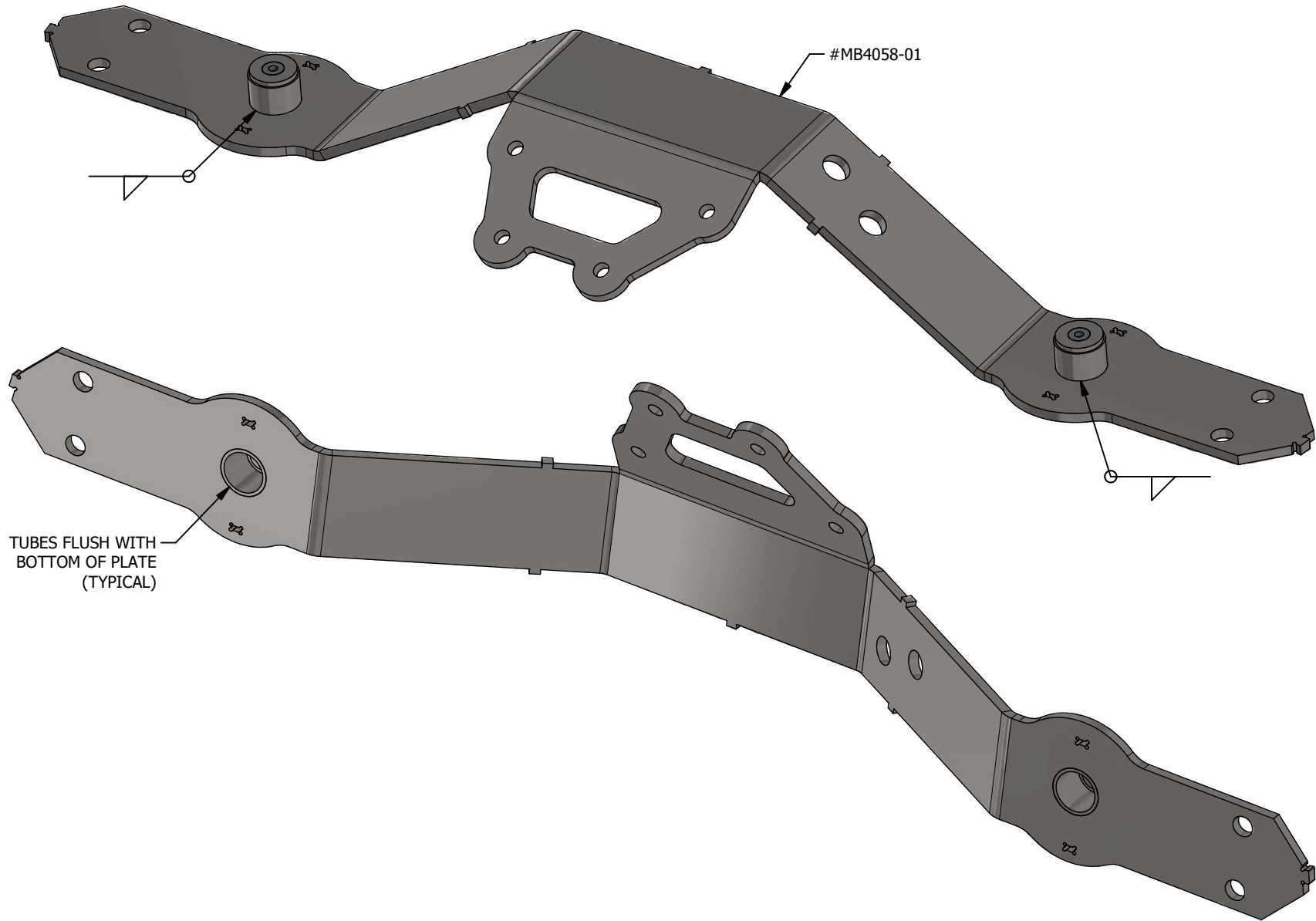
STEP #4



Dwg/Part No:
MB4058-NG
Description:
JK 1 Ton Axle Swap w/GM 14 Bolt

Sheet No: **6** of **16**
Rev No: **0**

Mat'l: **No Pinion Guard**



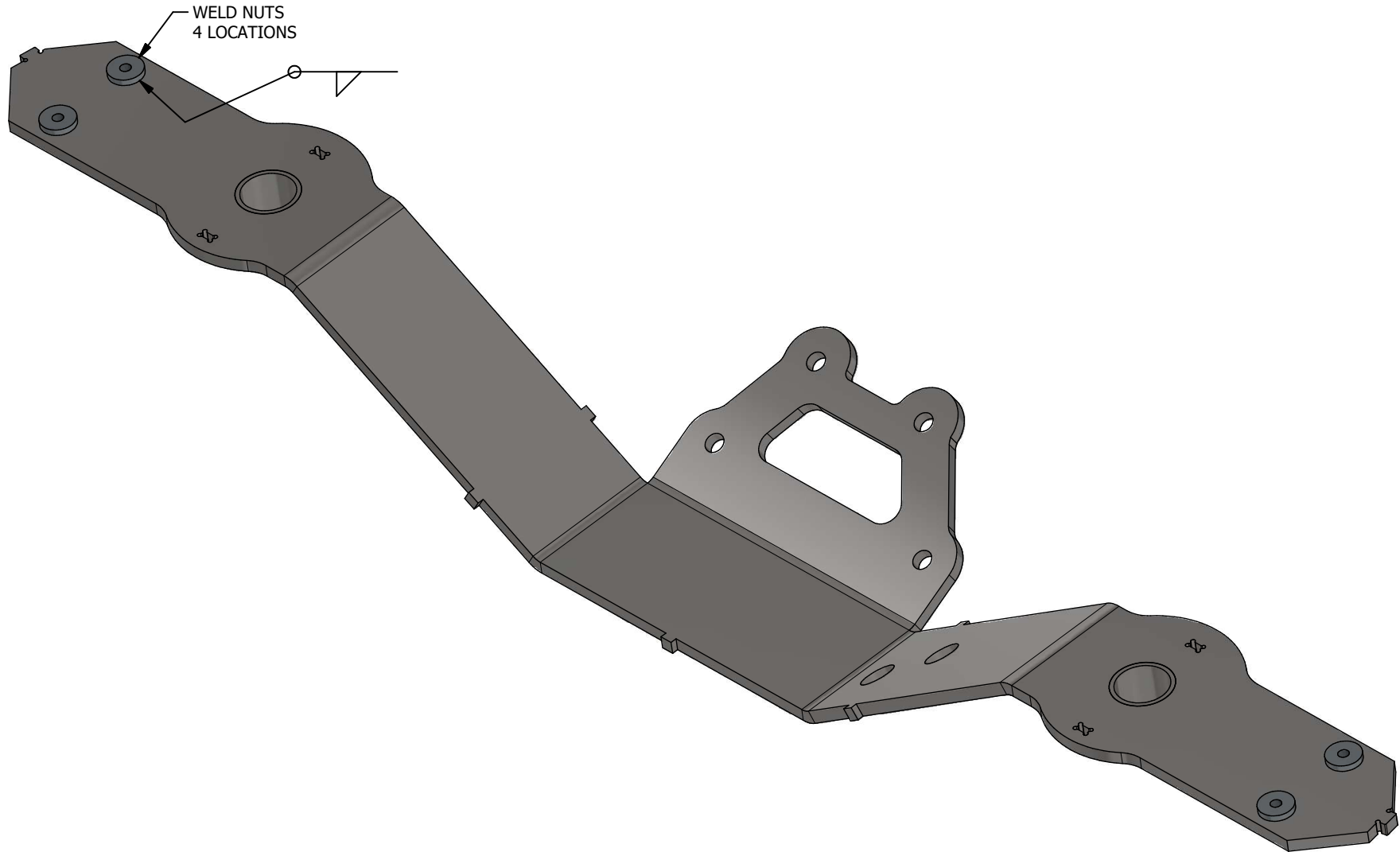
STEP #5



Dwg/Part No:
MB4058-NG
Description:
JK 1 Ton Axle Swap w/GM 14 Bolt

Sheet No: **7** of **16**
Rev No: **0**

Mat'l: **No Pinion Guard**



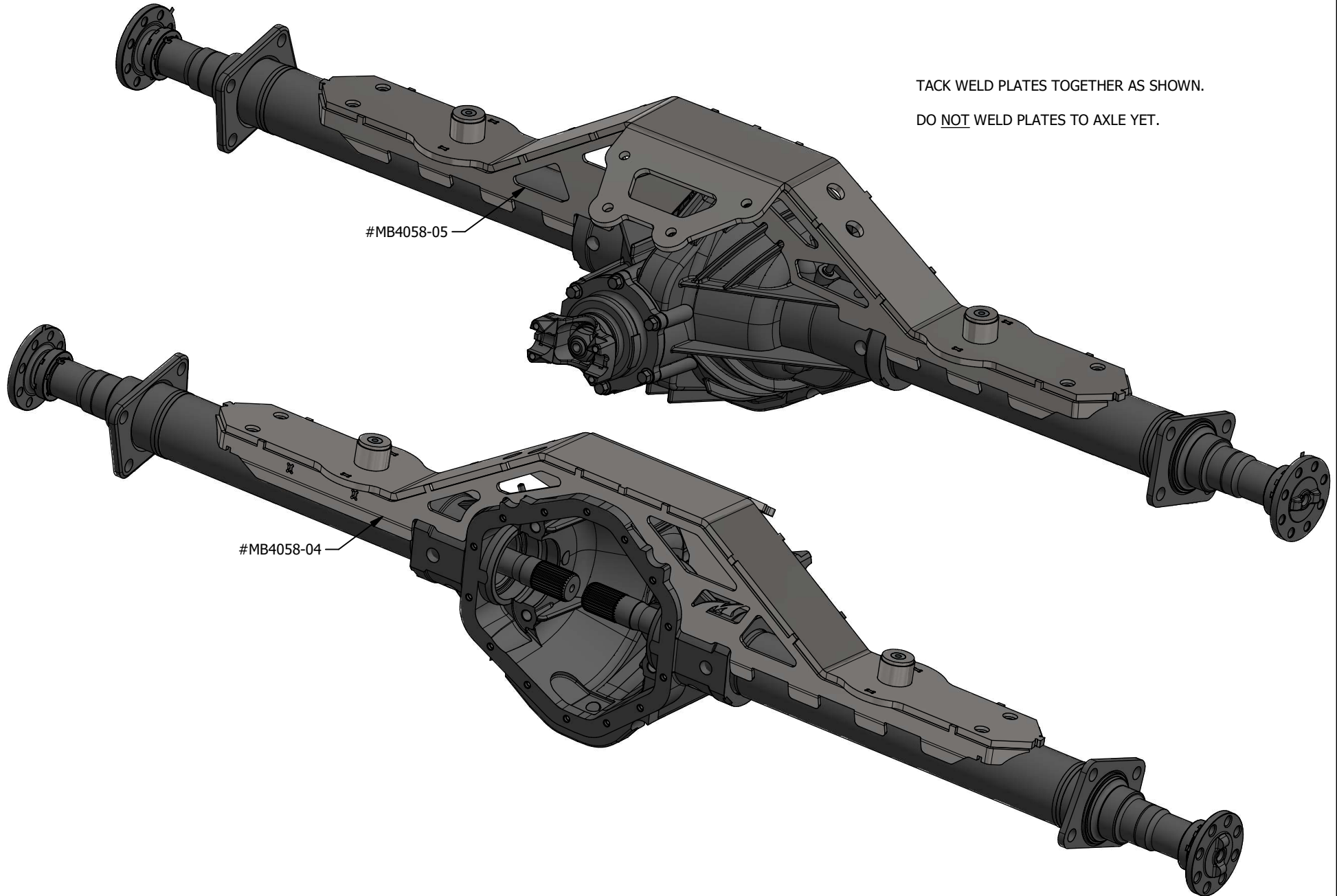
STEP #6



Dwg/Part No:
MB4058-NG
Description:
JK 1 Ton Axle Swap w/GM 14 Bolt

Sheet No: **8** of **16**
Rev No: **0**

Mat'l: **No Pinion Guard**



TACK WELD PLATES TOGETHER AS SHOWN.

DO NOT WELD PLATES TO AXLE YET.

#MB4058-05

#MB4058-04

STEP #7



Dwg/Part No:

MB4058-NG

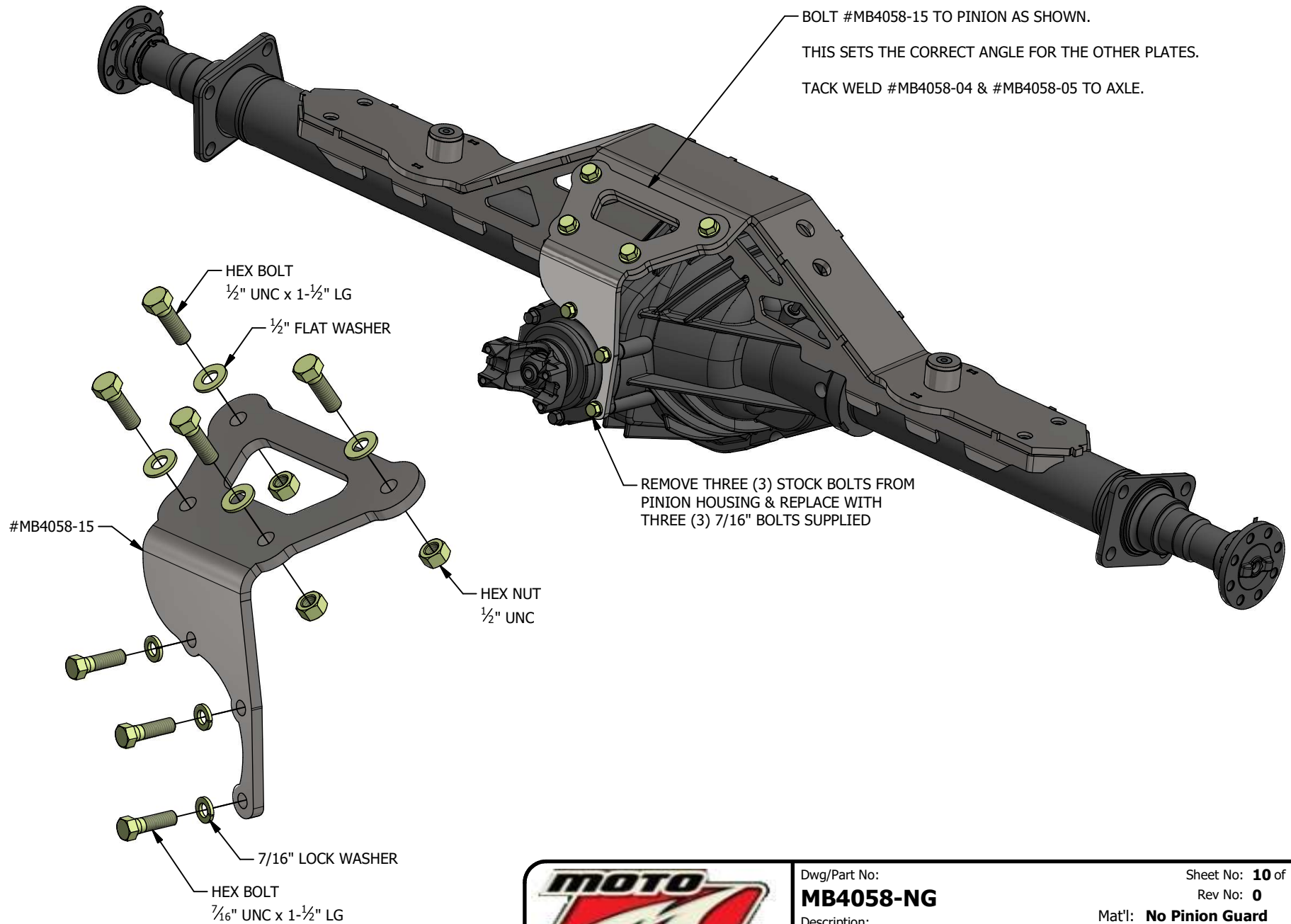
Description:

JK 1 Ton Axle Swap w/GM 14 Bolt

Sheet No: **9** of **16**

Rev No: **0**

Mat'l: **No Pinion Guard**

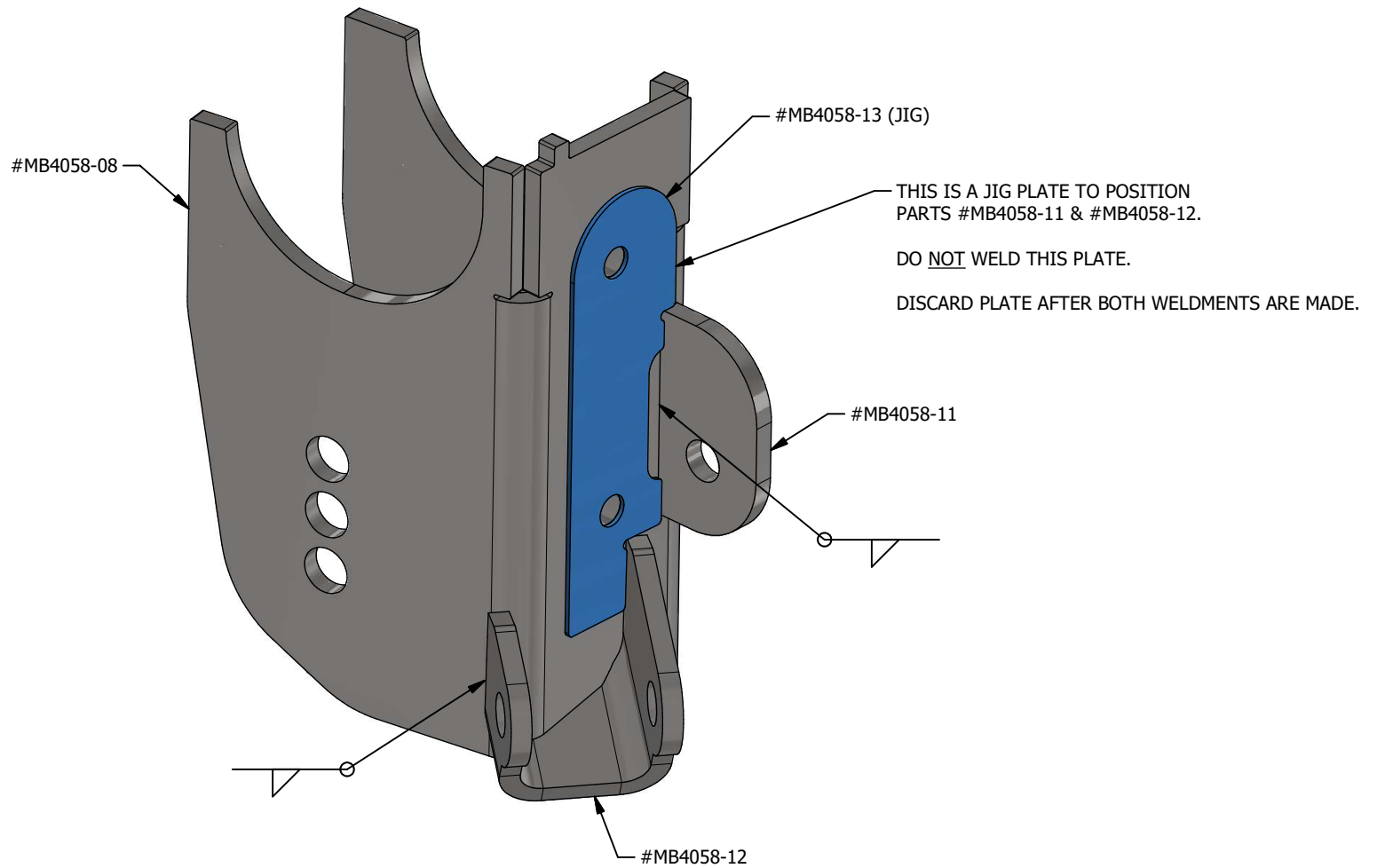


STEP #8



Dwg/Part No:
MB4058-NG
Description:
JK 1 Ton Axle Swap w/GM 14 Bolt

Sheet No: **10** of **16**
Rev No: **0**
Mat'l: **No Pinion Guard**



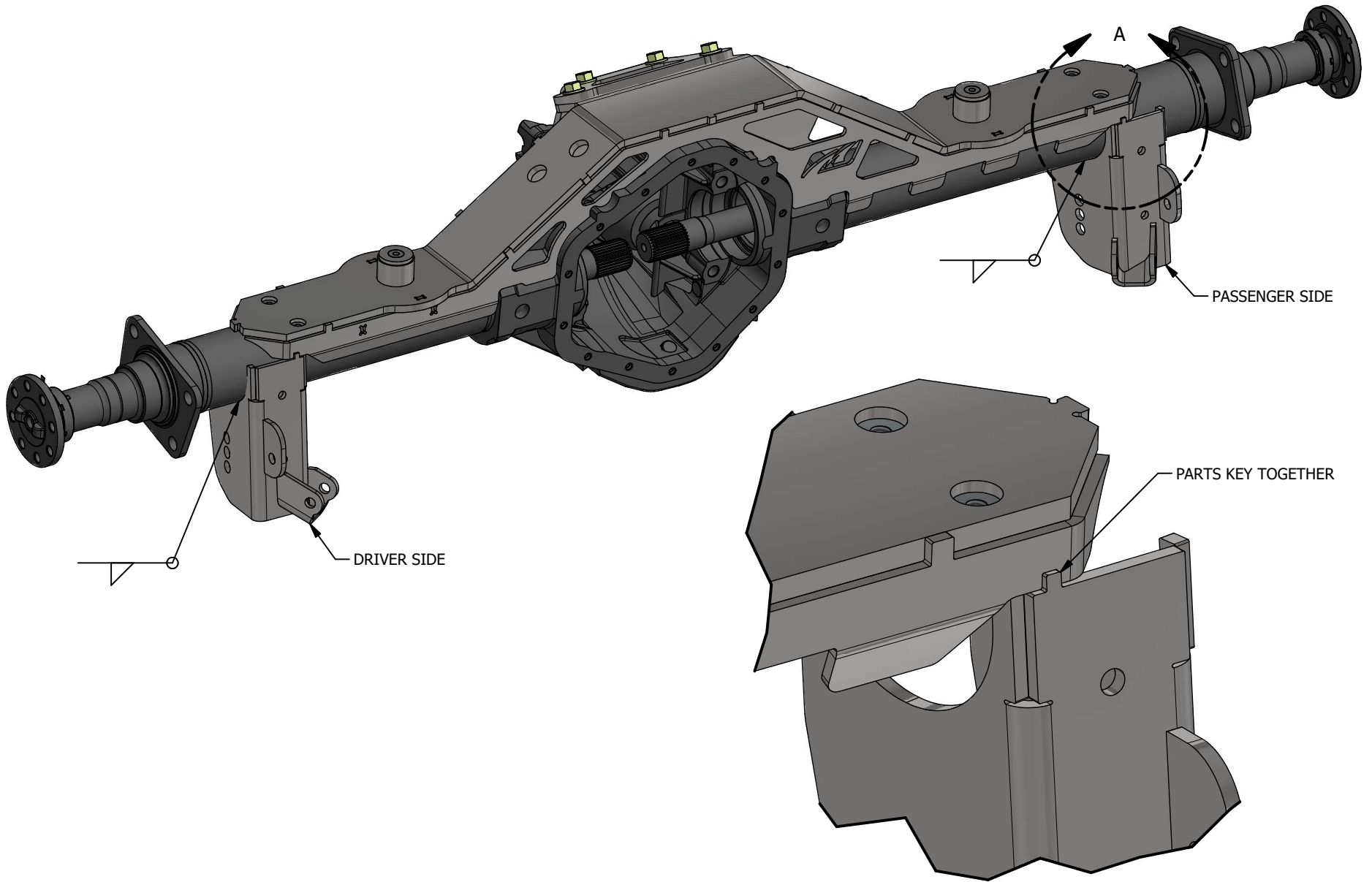
PASSENGER SIDE SHOWN
 MAKE A SIMILAR WELDMENT FOR DRIVER SIDE
 USING PARTS LABELLED WITH SUFFIX "_MIR".
 REUSE JIG PLATE #MB4058-13 FOR DRIVER SIDE WELDMENT



Dwg/Part No:
MB4058-NG
 Description:
JK 1 Ton Axle Swap w/GM 14 Bolt

Sheet No: **11** of **16**
 Rev No: **0**
 Mat'l: **No Pinion Guard**

STEP #9



STEP #10



Dwg/Part No:
MB4058-NG
Description:
JK 1 Ton Axle Swap w/GM 14 Bolt

Sheet No: **12** of **16**
Rev No: **0**
Mat'l: **No Pinion Guard**

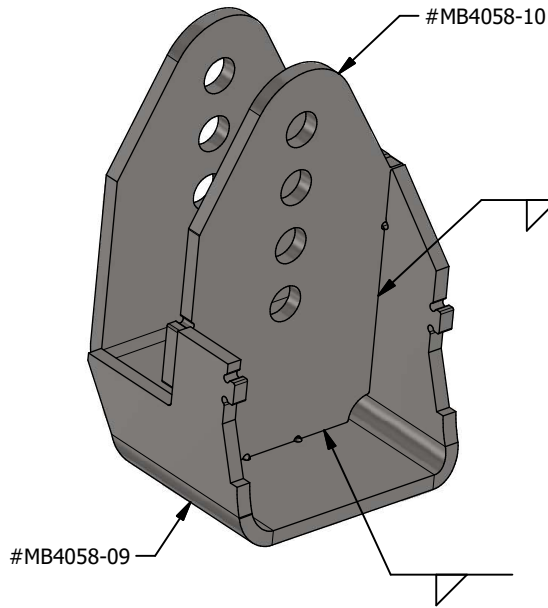


STEP #11

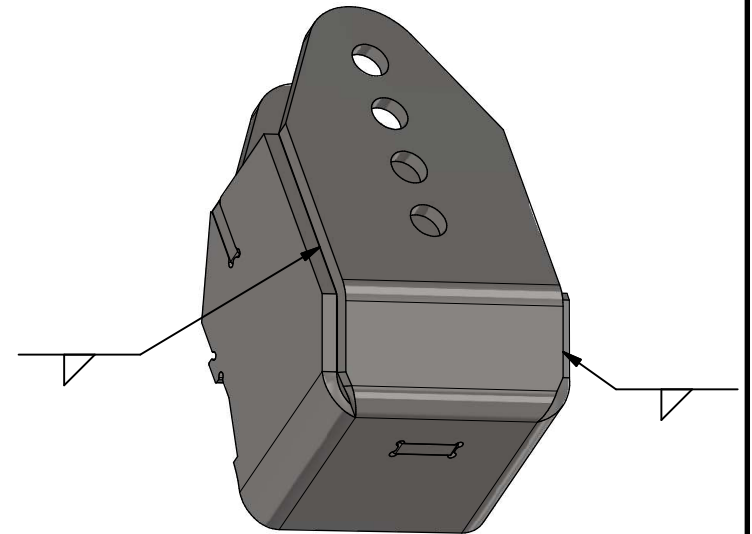
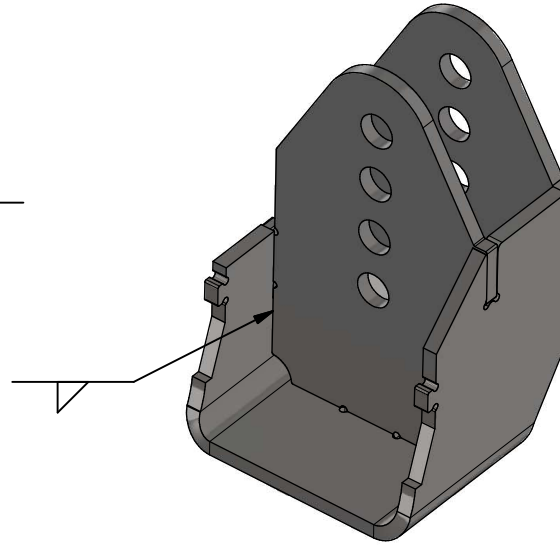


Dwg/Part No:
MB4058-NG
Description:
JK 1 Ton Axle Swap w/GM 14 Bolt

Sheet No: **13** of **16**
Rev No: **0**
Mat'l: **No Pinion Guard**



PREWELD THE TRACK BAR BRACKET AS SHOWN



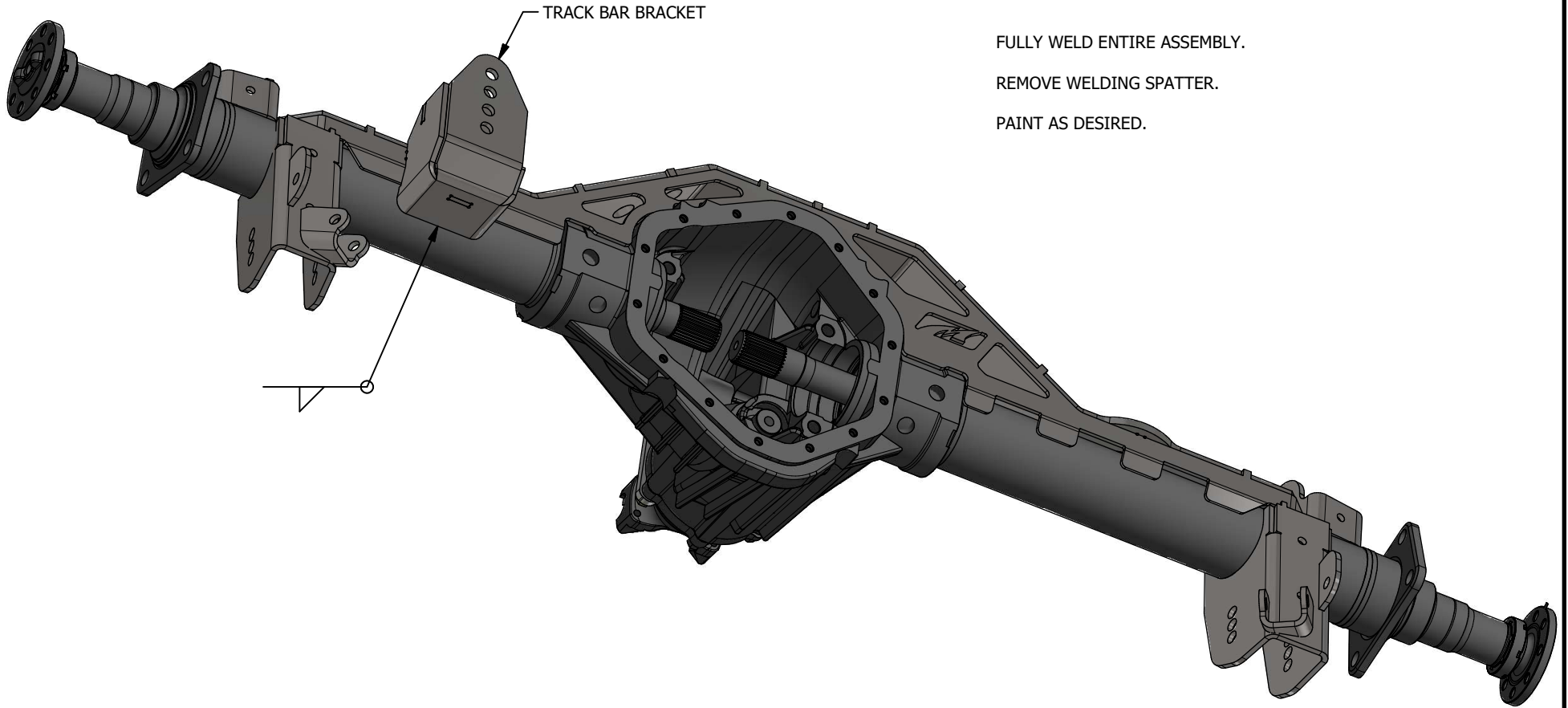
STEP #12



Dwg/Part No:
MB4058-NG
Description:
JK 1 Ton Axle Swap w/GM 14 Bolt

Sheet No: **14** of **16**
Rev No: **0**

Mat'l: **No Pinion Guard**



FULLY WELD ENTIRE ASSEMBLY.
REMOVE WELDING SPATTER.
PAINT AS DESIRED.

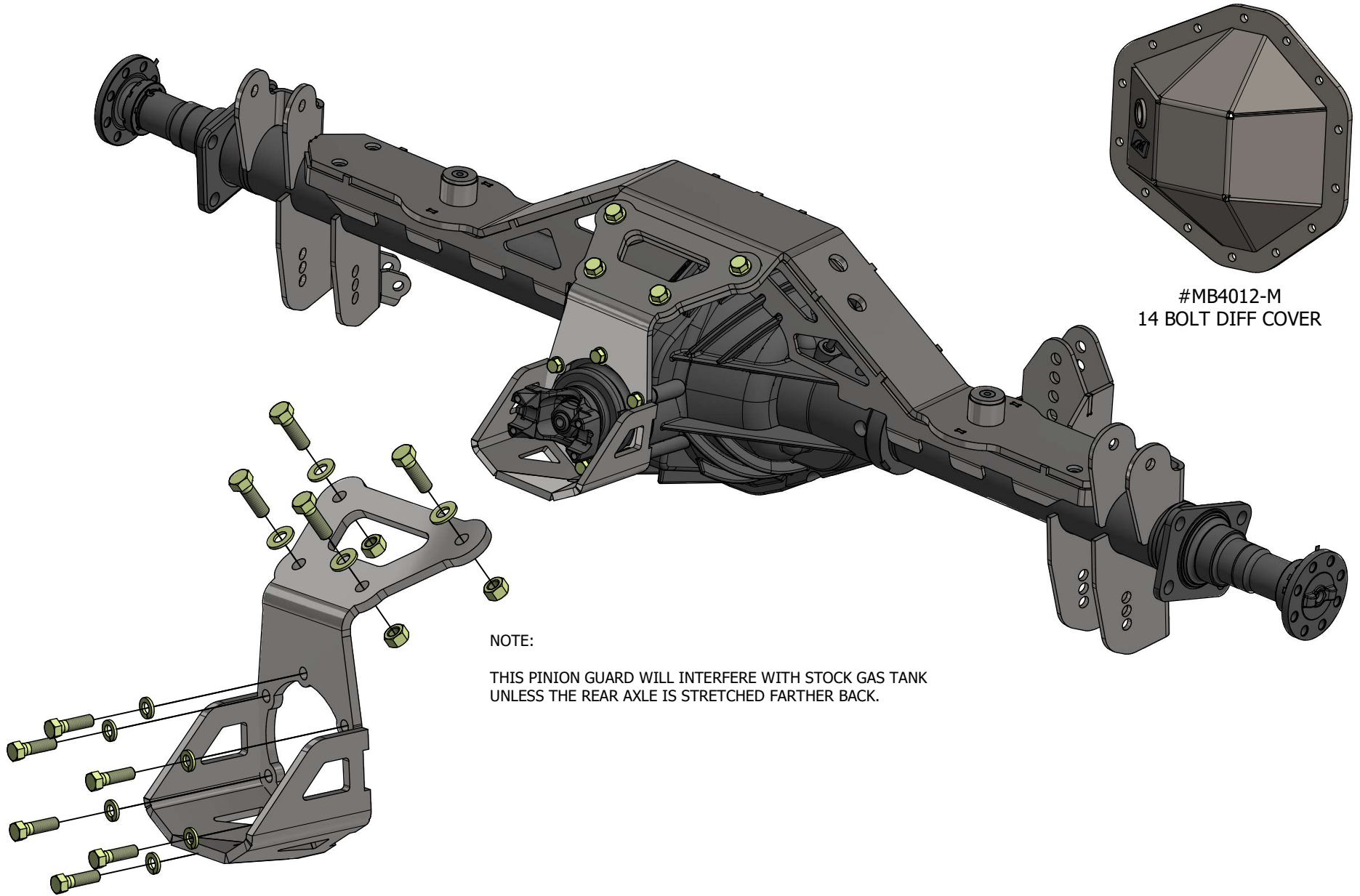
STEP #13



Dwg/Part No:
MB4058-NG
Description:
JK 1 Ton Axle Swap w/GM 14 Bolt

Sheet No: **15** of **16**
Rev No: **0**

Mat'l: **No Pinion Guard**



#MB4012-M
14 BOLT DIFF COVER

NOTE:

THIS PINION GUARD WILL INTERFERE WITH STOCK GAS TANK
UNLESS THE REAR AXLE IS STRETCHED FARTHER BACK.

**OPTIONAL PARTS
AVAILABLE**



Dwg/Part No:

MB4058-NG

Description:

JK 1 Ton Axle Swap w/GM 14 Bolt

Sheet No: **16** of **16**

Rev No: **0**

Mat'l: **No Pinion Guard**