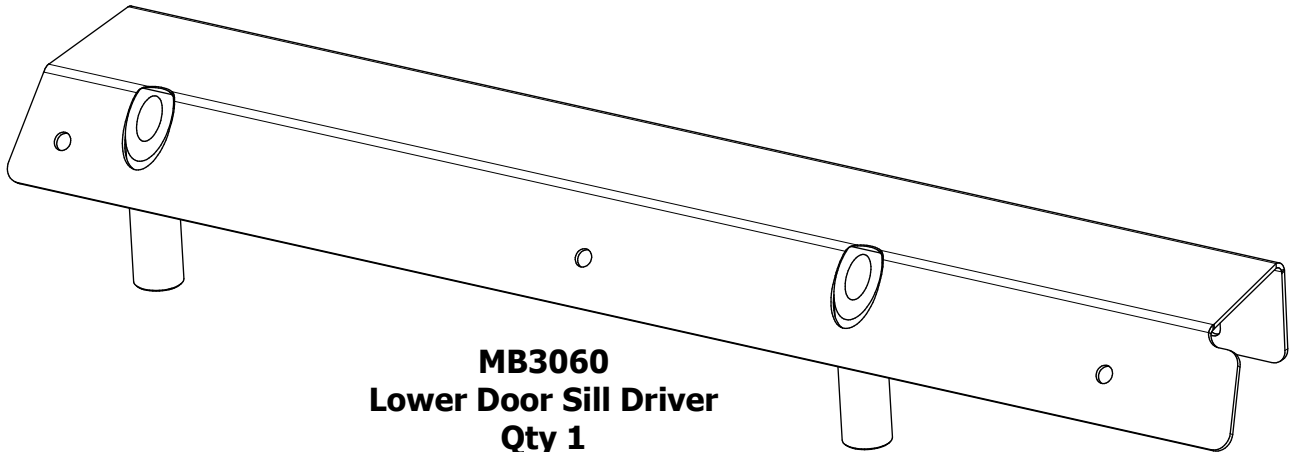


ASSEMBLY INSTRUCTIONS

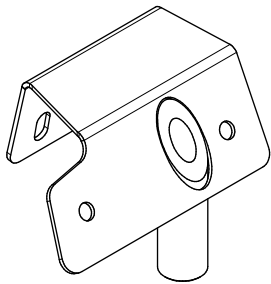


MB3060 - Assembly Instructions Front Soft Upper Window Adapter Kit JKU

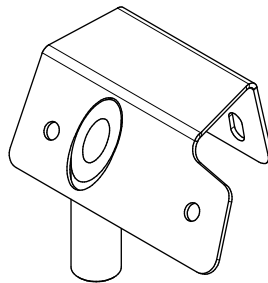
CONTENTS



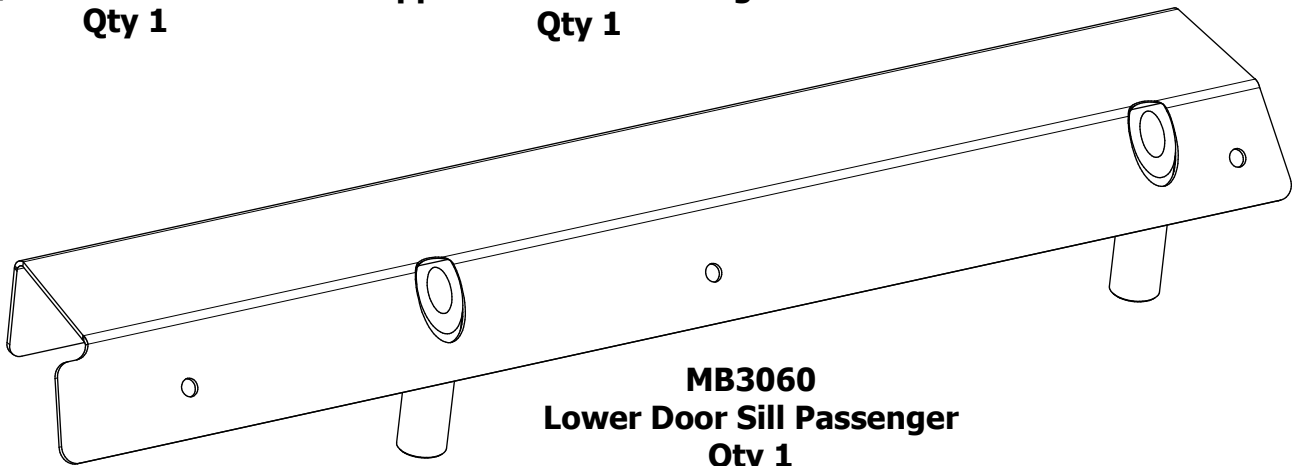
**MB3060
Lower Door Sill Driver
Qty 1**



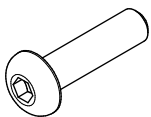
**MB3060
Upper Door Sill Driver
Qty 1**



**MB3060
Upper Door Sill Passenger
Qty 1**



**MB3060
Lower Door Sill Passenger
Qty 1**



**Button Head Screw
#10-24 x 3/4"
Qty 14**



**Flat Washer
M6
Qty 14**



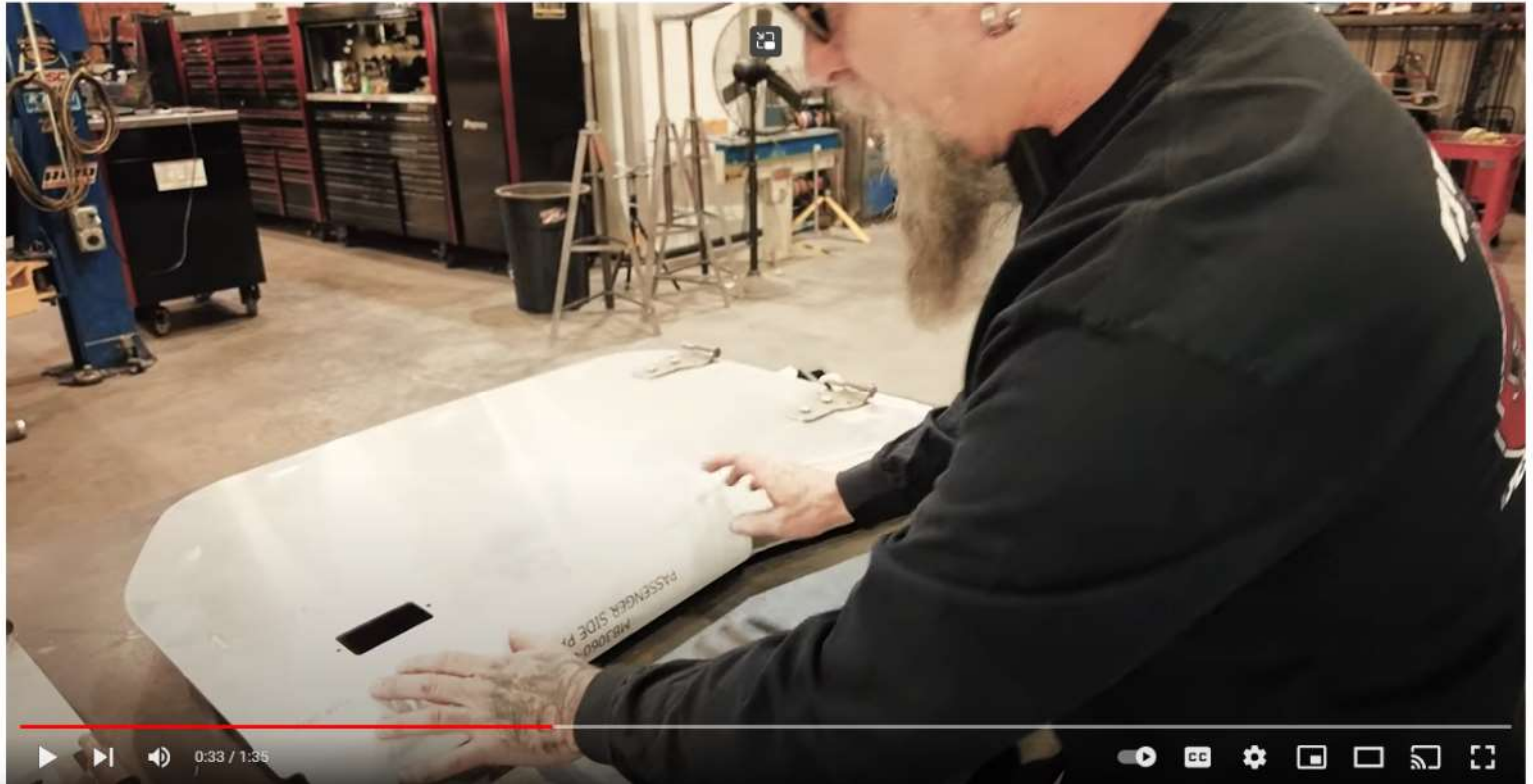
**Nylock Nut
#10-24
Qty 14**

MB3060 - Assembly Instructions Front Soft Upper Window Adapter Kit JKU**INSTRUCTIONAL VIDEO AVAILABLE**

https://www.youtube.com/watch?v=qh_I0KH-hxs

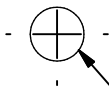
Browse to YOUTUBE.com

Search "Front and Rear Soft Upper Kit for Motobilt Jeep JK/JKU Half Doors"





MATCH LINE
ADD TEMPLATE "B"



DO **NOT** MARK THIS HOLE
USING THE PAPER TEMPLATE.
THIS HOLE WILL BE MARKED
WITH THE ACTUAL STEEL PARTS

FOLD

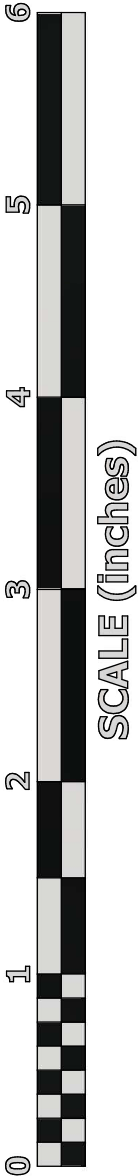
FOLD

MB3060-01 PAPER TEMPLATE "A" USED FOR MARKING LARGE CUTOUT

PRINT THIS SHEET ON
8-1/2" x 11" PAPER AT
100% SCALE

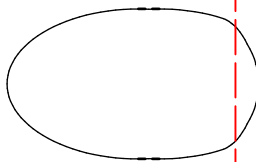
5.835 inches
MEASURE THIS DIMENSION
WITH CALIPERS TO VERIFY
YOU HAVE PRINTED TO 1:1 SCALE

CUT OUT
TEMPLATE

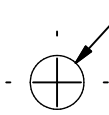


SCALE (inches)

LINE UP WITH EXISTING
HOLE ON INTERIOR
DOOR SKIN



CUT OUT THIS HOLE
ON PAPER TEMPLATE



DO **NOT** MARK THIS HOLE
USING THE PAPER TEMPLATE.
THIS HOLE WILL BE MARKED
WITH THE ACTUAL STEEL PARTS



CUT OUT TEMPLATE

FOLD

FOLD

DO **NOT** MARK THIS HOLE USING THE PAPER TEMPLATE. THIS HOLE WILL BE MARKED WITH THE ACTUAL STEEL PARTS

LINE UP WITH EXISTING HOLE ON INTERIOR DOOR SKIN

MB3060-01 PAPER TEMPLATE "B" USED FOR MARKING LARGE CUTOUT

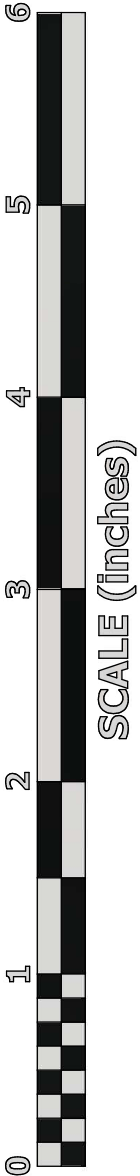
PRINT THIS SHEET ON
8-1/2" x 11" PAPER AT
100% SCALE

CUT OUT THIS HOLE ON PAPER TEMPLATE

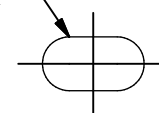
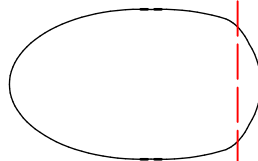
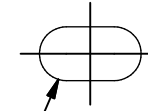
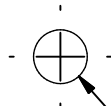
5.835 inches
MEASURE THIS DIMENSION
WITH CALIPERS TO VERIFY
YOU HAVE PRINTED TO 1:1 SCALE

LINE UP WITH EXISTING HOLE ON INTERIOR DOOR SKIN

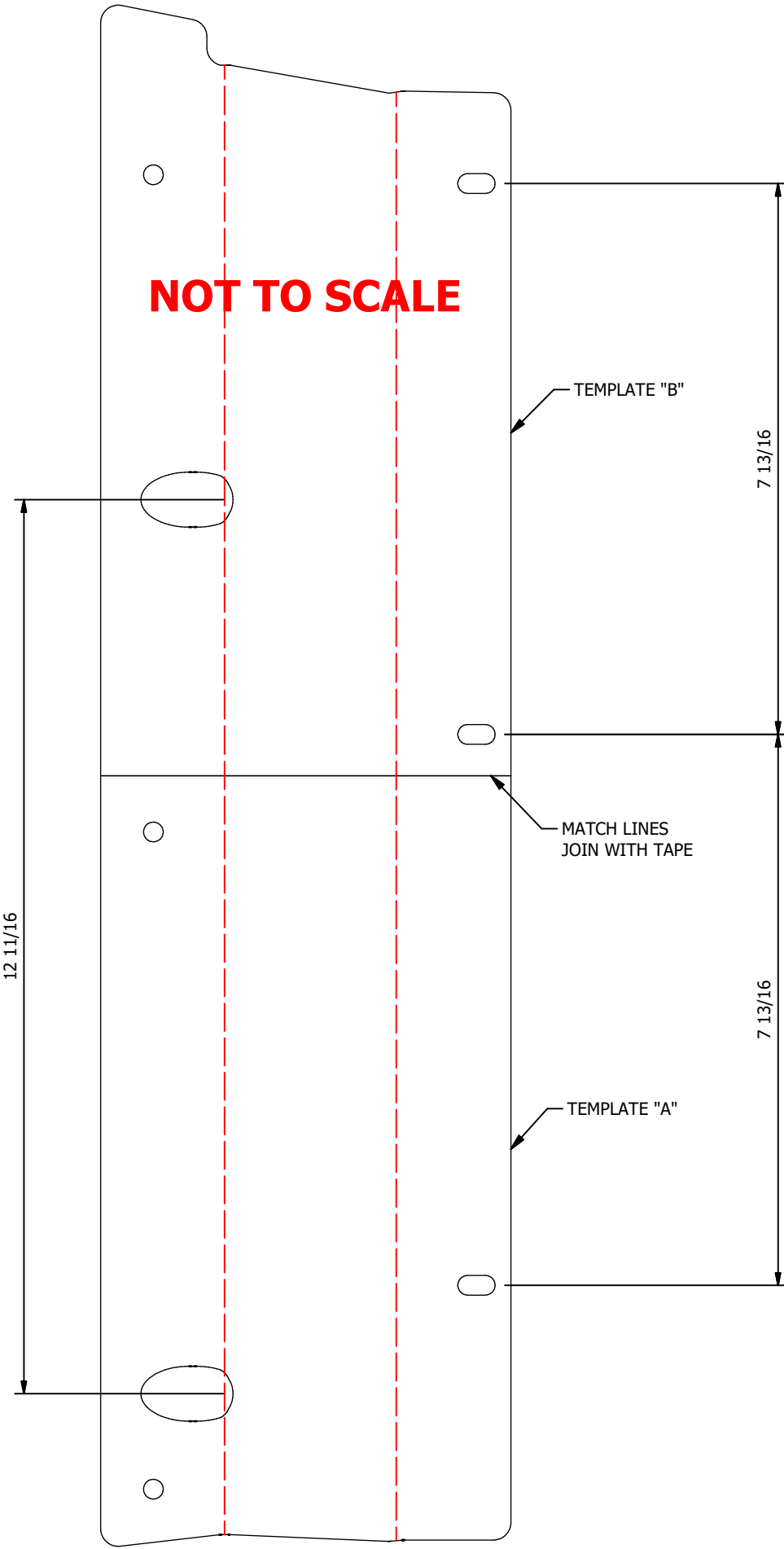
MATCH LINE
ADD TEMPLATE "A"



SCALE (inches)



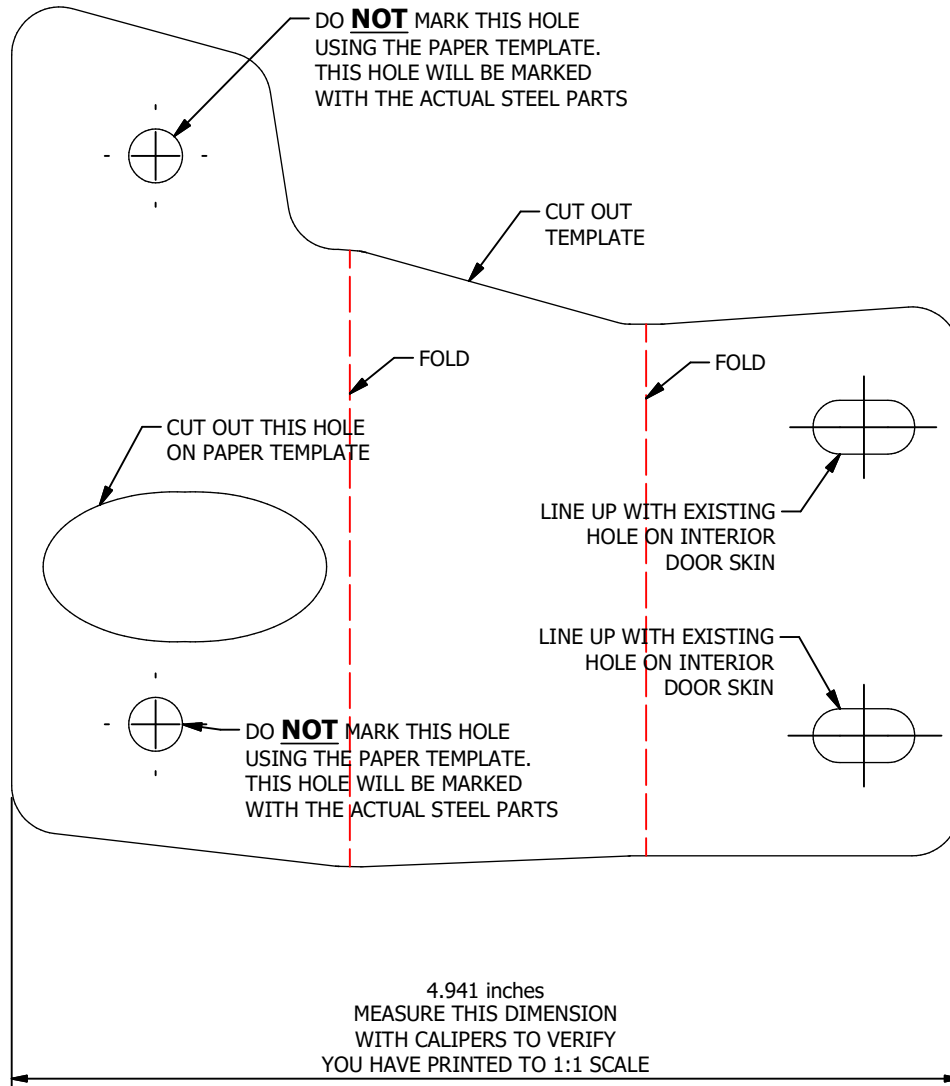
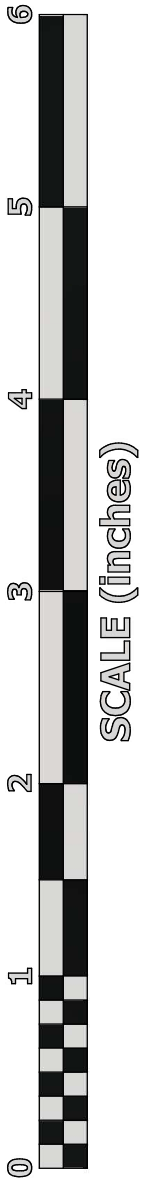
JOIN TEMPLATE "A" WITH TEMPLATE "B"





MB3060-02 PAPER TEMPLATE "C" USED FOR MARKING LARGE CUTOUT

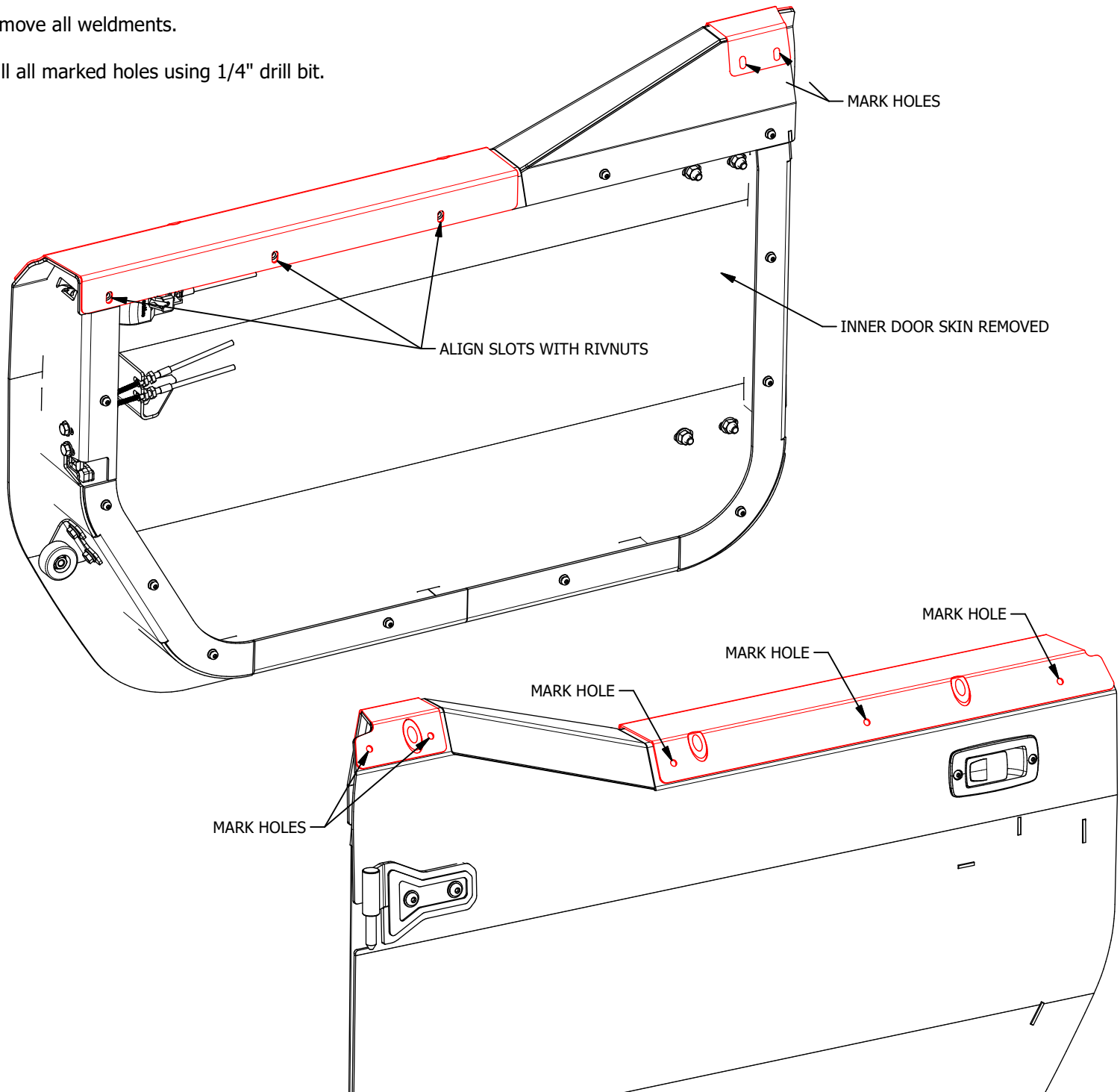
PRINT THIS SHEET ON
8-1/2" x 11" PAPER AT
100% SCALE



MB3060 - Assembly Instructions Front Soft Upper Window Adapter Kit JKU

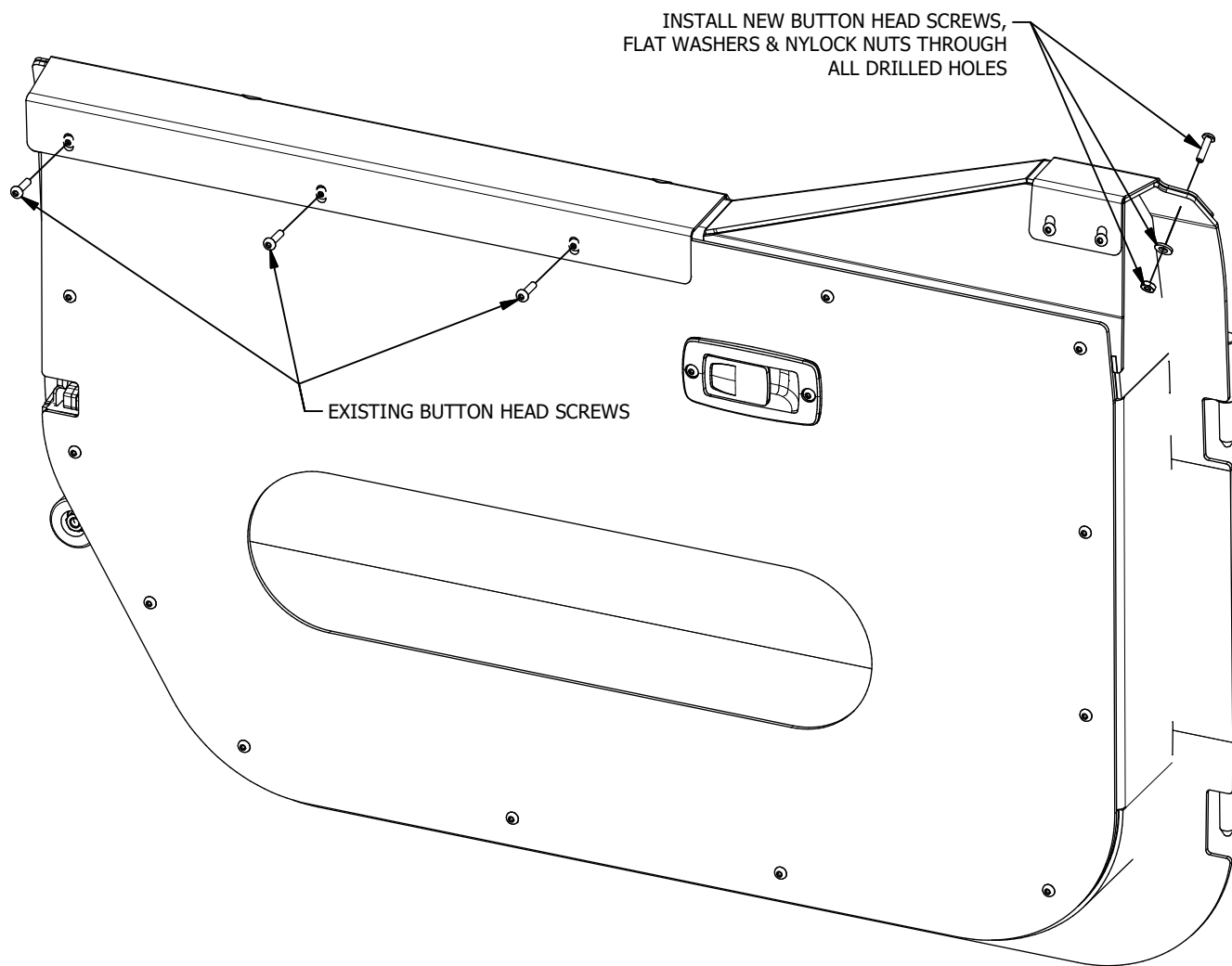
STEP 2

1. Remove the inner door skin from half door.
2. Place both the Upper & Lower Door Sill weldments in position. The welded tubes in each Door Sill weldment should loosely clear the cutouts you made in in the doors from Step 1.
3. Ensure the slotted holes in Lower Door Sill weldment are aligned with the rivnuts in the half door.
4. Ensure the Upper Sill weldment follows the shape of the half door.
5. Mark all remaining small holes.
6. Remove all weldments.
7. Drill all marked holes using 1/4" drill bit.



MB3060 - Assembly Instructions Front Soft Upper Window Adapter Kit JKU**STEP 3**

1. With the inner door skin still removed, install button head screws, flat washers & nylocks through all of the drilled holes.
2. Install inner door skin.
3. Install the three (3) existing button head screws shown.



MB3060 - Assembly Instructions Front Soft Upper Window Adapter Kit JKU**STEP 4
INSTALL SOFT UPPER DOORS**