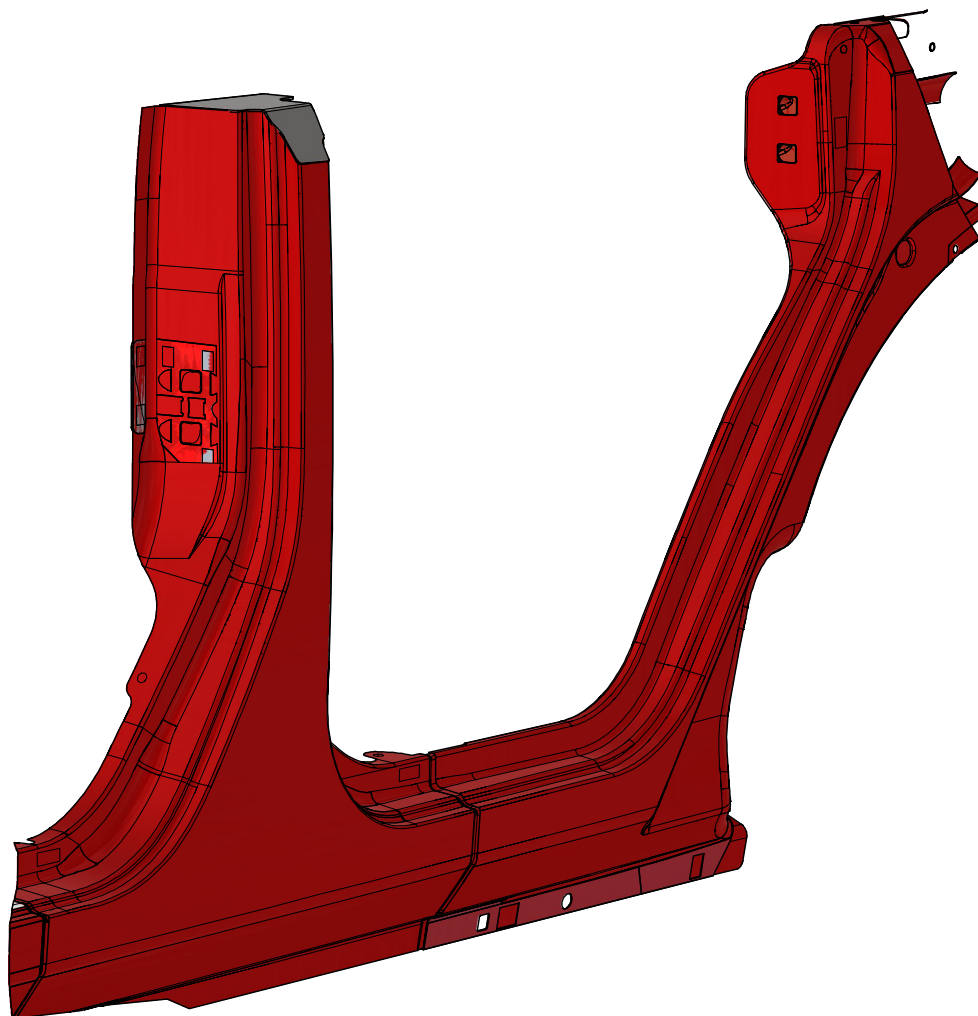
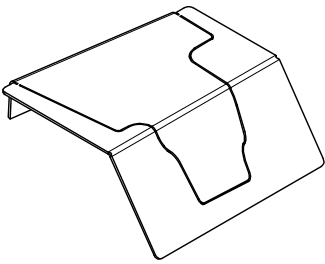


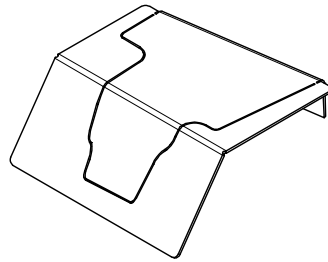
MB3057 - JKU B-PILLAR CHOP



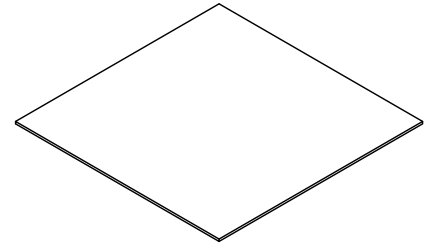
ASSEMBLY INSTRUCTIONS

MB3057 - Assembly Instructions JKU B-Pillar Chop**KIT COMPONENTS**

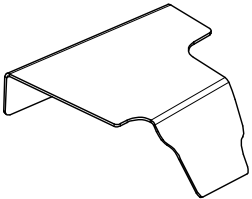
MB3057-01
Qty: 1



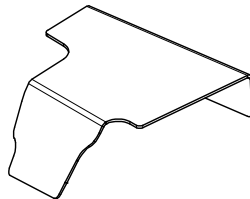
MB3057-01_MIR
Qty: 1



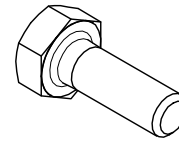
MB3057 - GASKET
Qty: 2



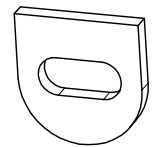
MB3057-02
Qty: 1



MB3057-02_MIR
Qty: 1



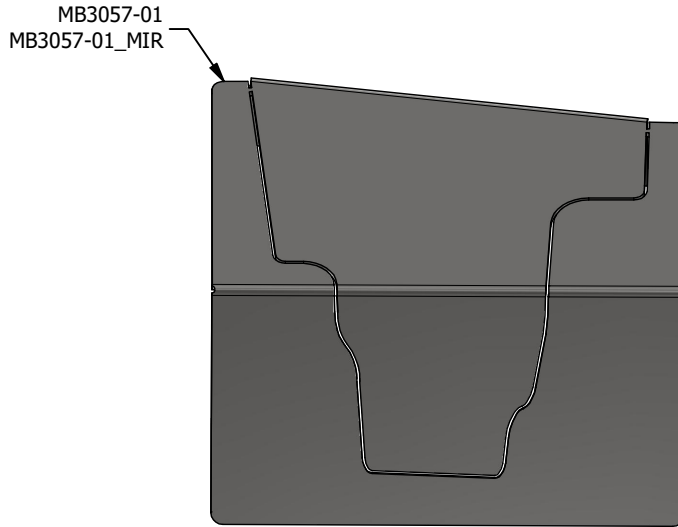
HEX BOLT
1/4"-20 x 3/4" GR8
Qty: 4



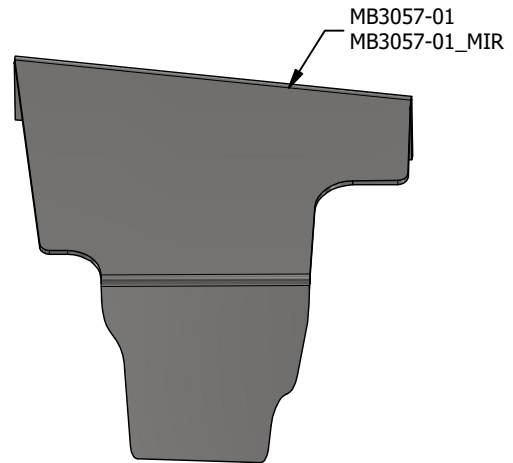
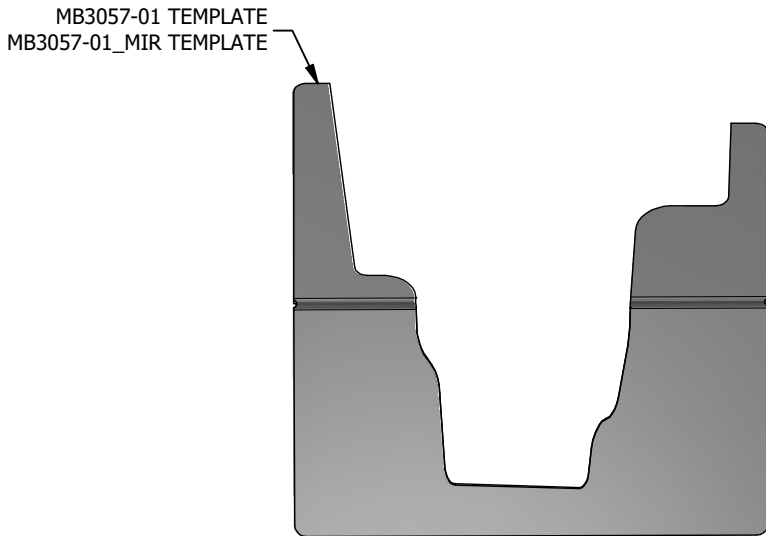
MB3032-11
Qty: 2

MB3057 - Assembly Instructions JKU B-Pillar Chop

TEMPLATE PREPARATION

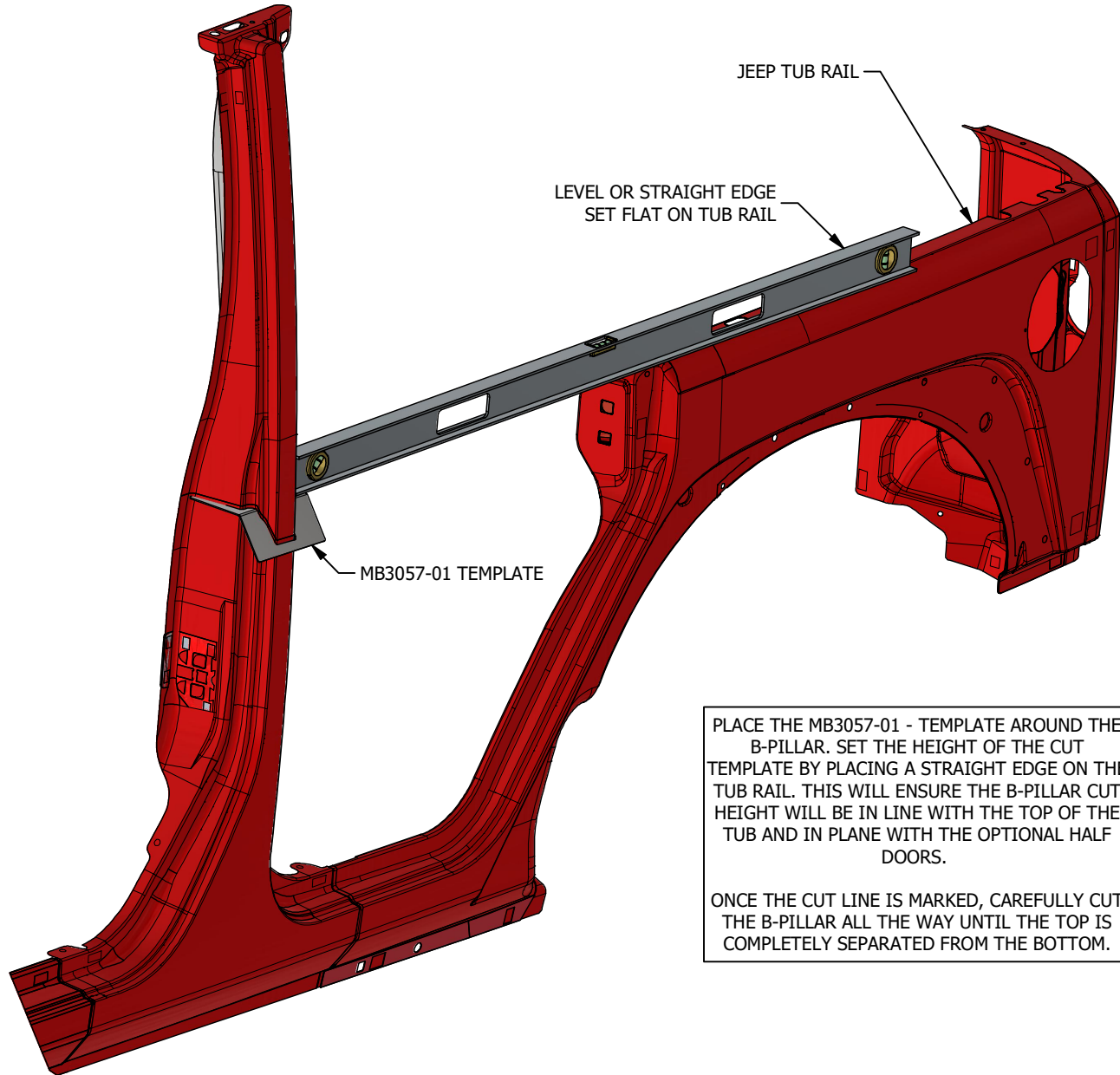


SPLIT



MB3057 - Assembly Instructions JKU B-Pillar Chop

TEMPLATE PLACEMENT AND CUT

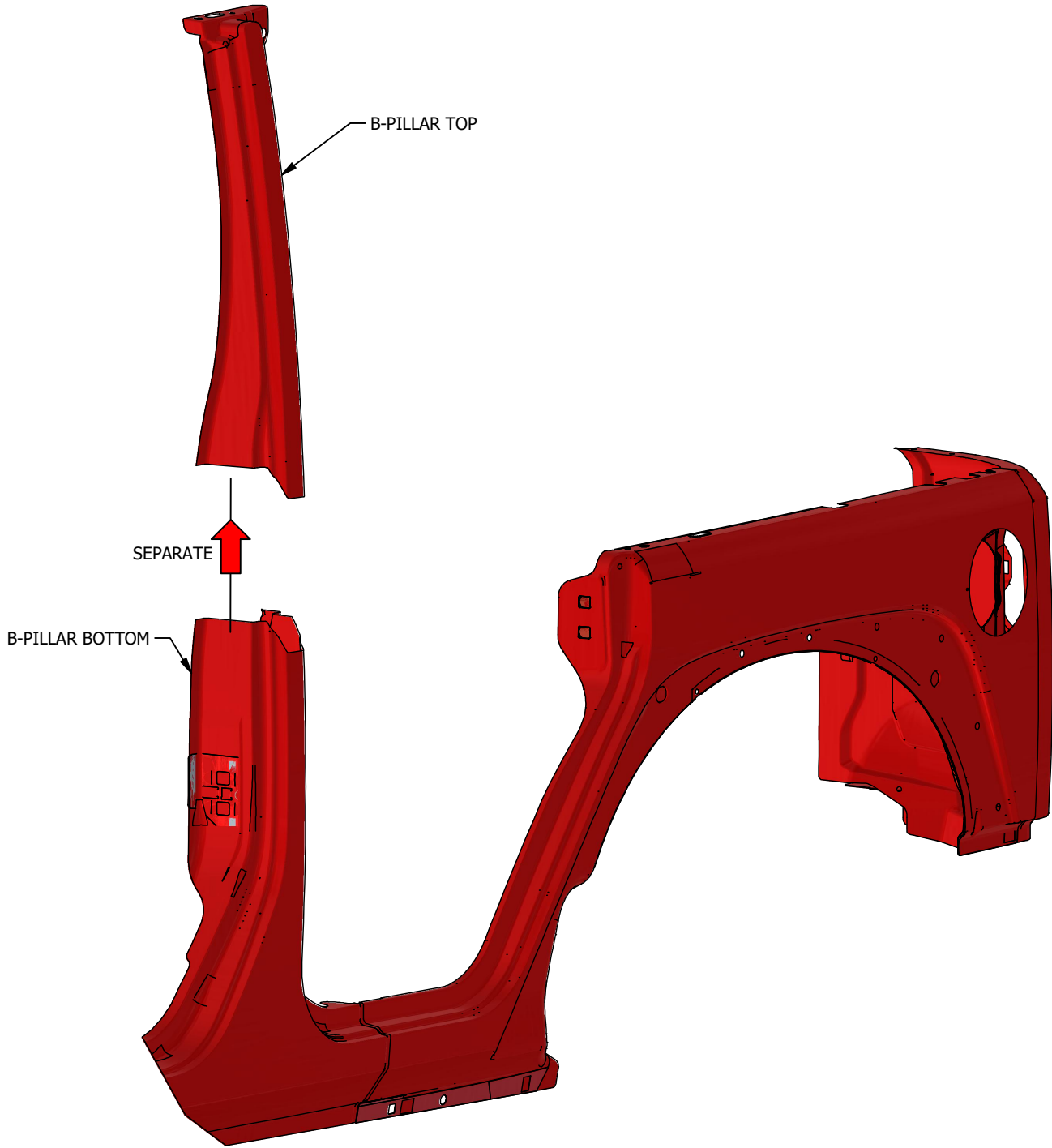


PLACE THE MB3057-01 - TEMPLATE AROUND THE B-PILLAR. SET THE HEIGHT OF THE CUT TEMPLATE BY PLACING A STRAIGHT EDGE ON THE TUB RAIL. THIS WILL ENSURE THE B-PILLAR CUT HEIGHT WILL BE IN LINE WITH THE TOP OF THE TUB AND IN PLANE WITH THE OPTIONAL HALF DOORS.

ONCE THE CUT LINE IS MARKED, CAREFULLY CUT THE B-PILLAR ALL THE WAY UNTIL THE TOP IS COMPLETELY SEPARATED FROM THE BOTTOM.

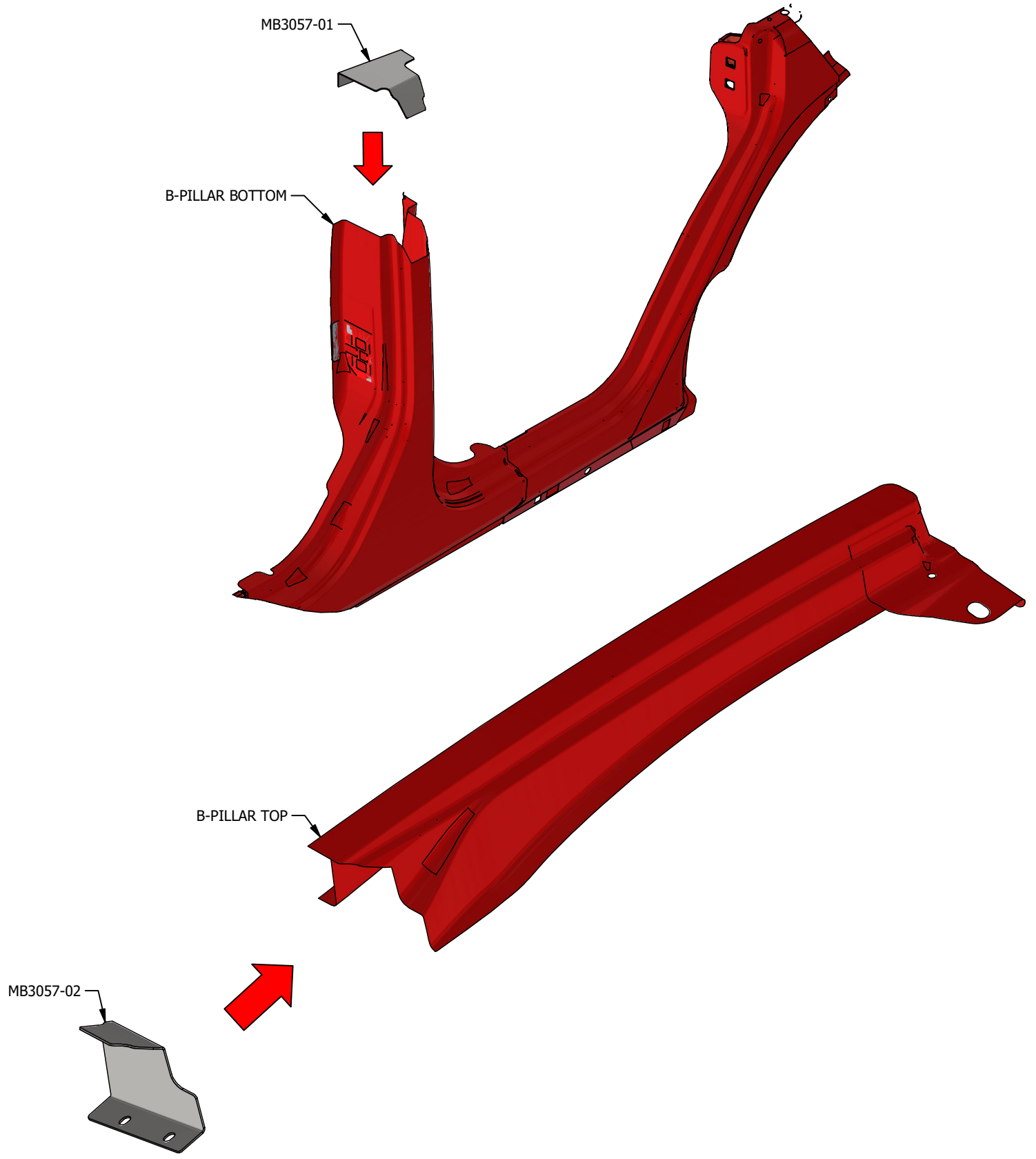
MB3057 - Assembly Instructions JKU B-Pillar Chop

SEPARATING THE B-PILLAR



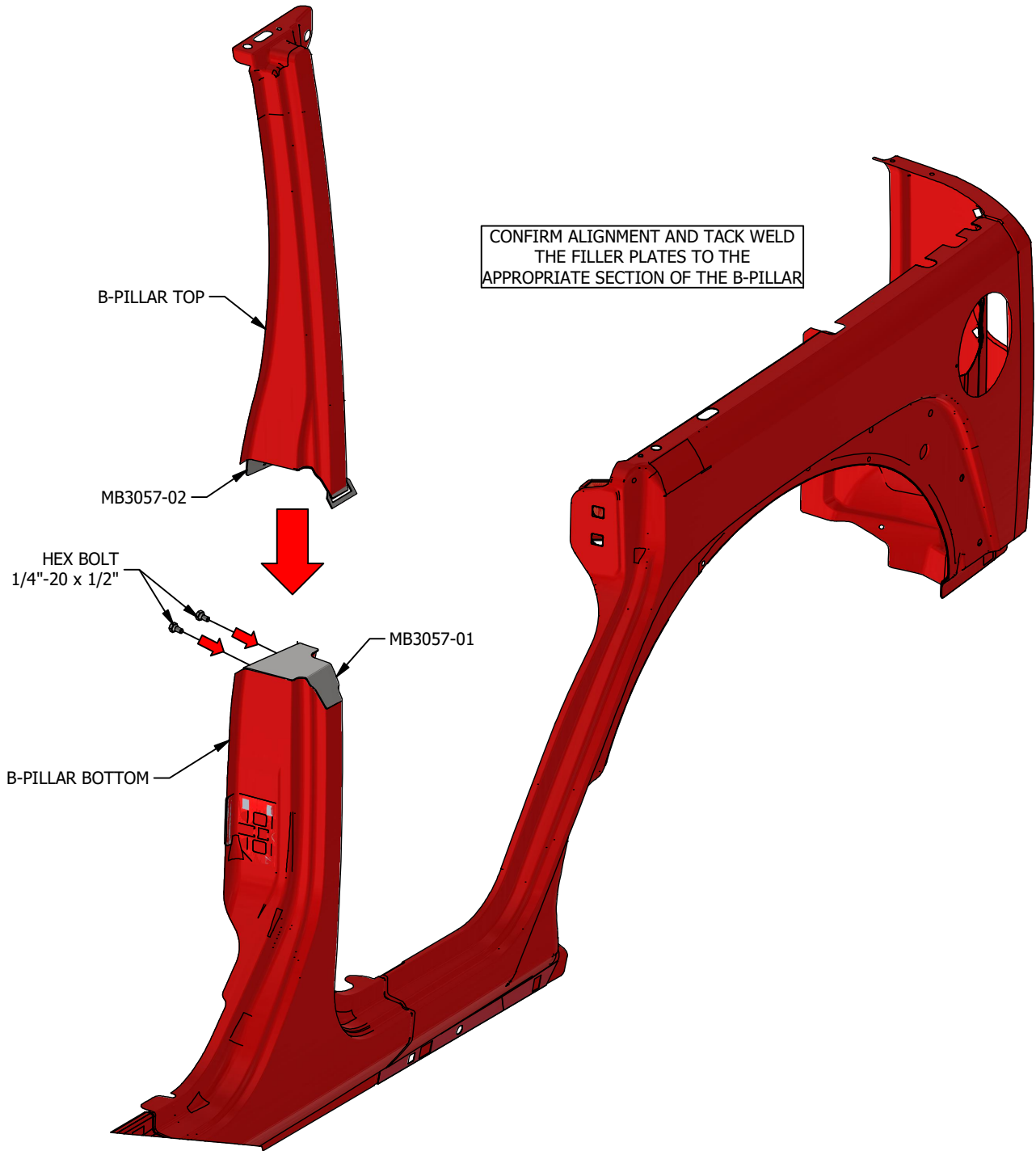
MB3057 - Assembly Instructions JKU B-Pillar Chop

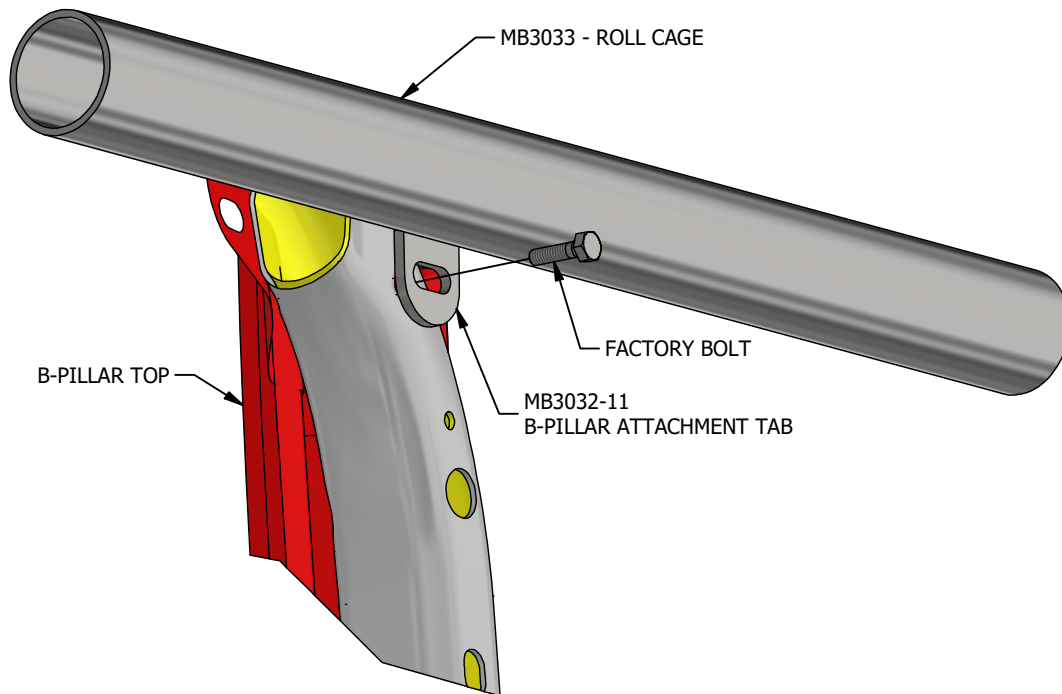
FILLER PLATES



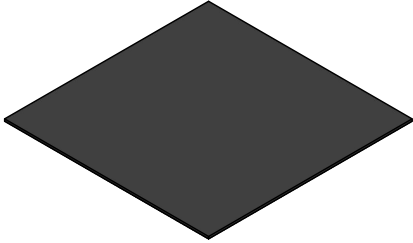
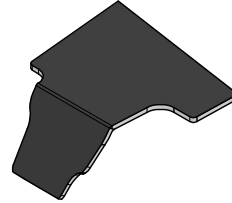
MB3057 - Assembly Instructions JKU B-Pillar Chop

B-PILLAR FIT-UP



MB3057 - Assembly Instructions JKU B-Pillar Chop**B-PILLAR FIT-UP**

ONCE FITMENT IS CONFIRMED WELD AND GRIND MB3057-01 AND MB3057-02 TO THE TOP AND BOTTOM OF THE B-PILLAR RESPECTIVELY.

MB3057 - Assembly Instructions JKU B-Pillar Chop**GASKET****MB3057 - GASKET****MB3057 - TRIMMED**

TRIM THE MB3057-GASKET SUPPLIED GASKET MATERIAL TO THE PROFILE OF THE B-PILLAR

AFTER WELDING AND PAINTING HAVE BEEN COMPLETED ATTACHE THE CLOSED CELL FOAM TO MB3057-02 TOP B-PILLAR.

