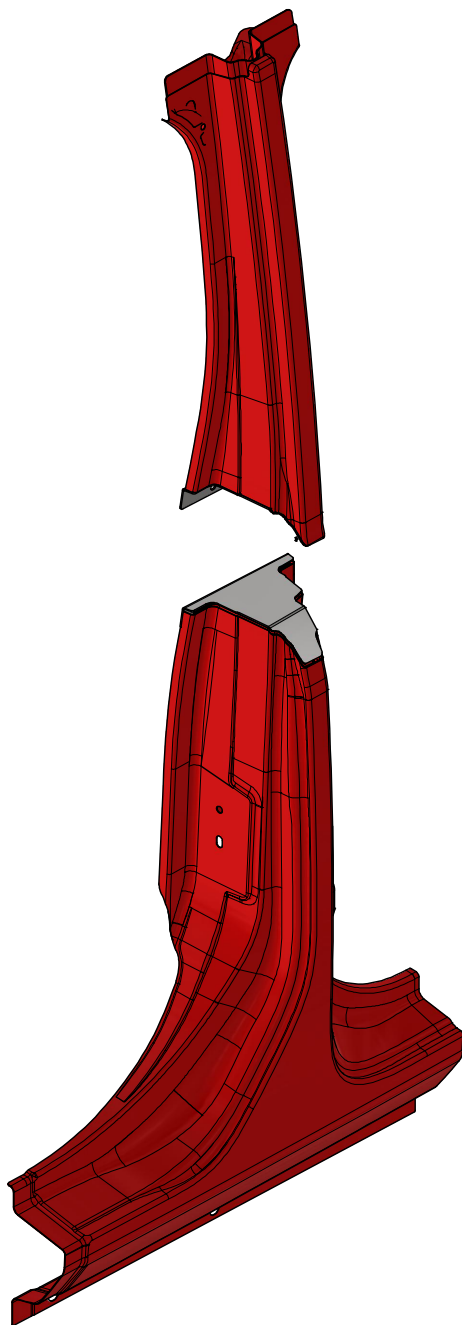
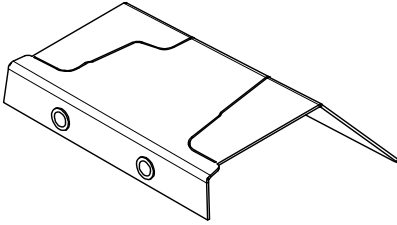


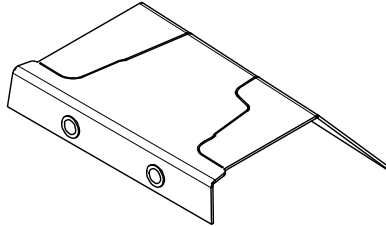
MB3044 - JL B-PILLAR CUT OFF KIT



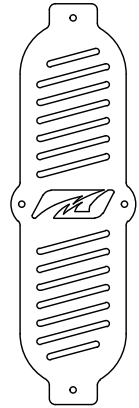
INSTALLATION INSTRUCTIONS

MB3044 - Installation Instructions B-Pillar Cut Off Kit - JL**KIT CONTENTS**

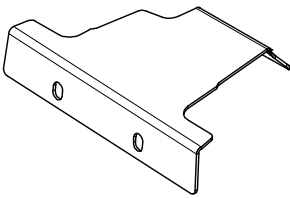
**MB3044-01
RIVNUT INSTALLED
Qty: 1**



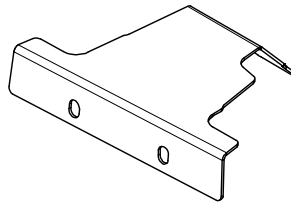
**MB3044-01_MIR
RIVNUT INSTALLED
Qty: 1**



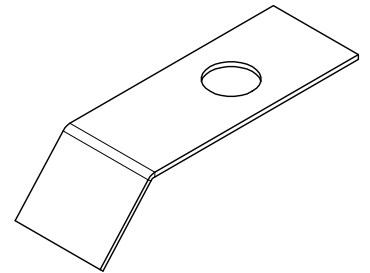
**MB3044-03
Qty: 2**



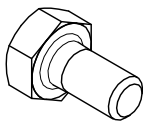
**MB3044-02
Qty: 1**



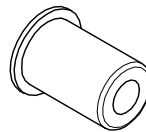
**MB3044-02_MIR
Qty: 1**



**MB3044 - FOAM PAD
Qty: 2**



**HEX BOLT
1/4"-20 x 0.5" GR.8
Qty: 6**

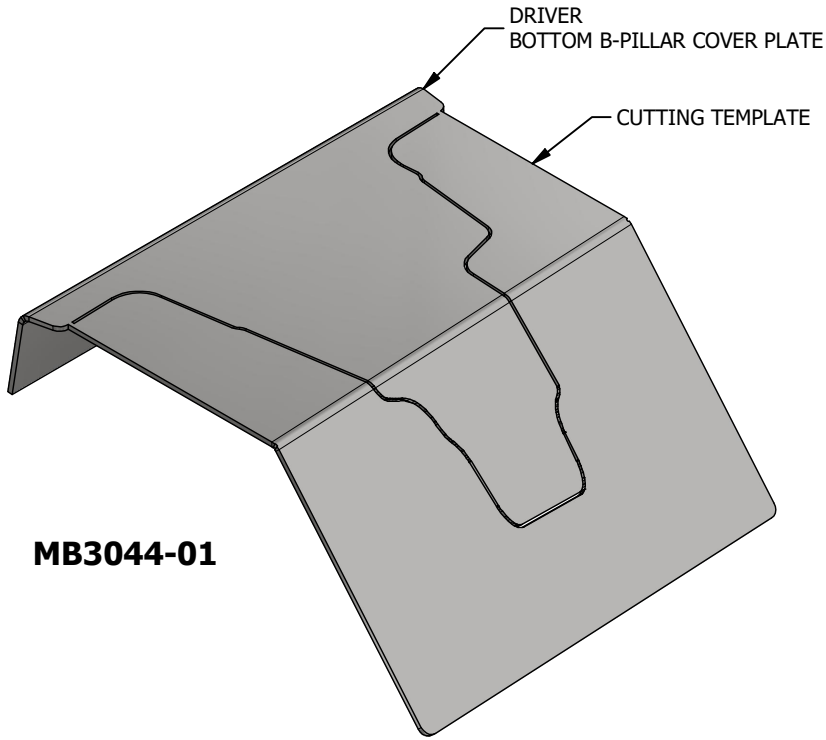


**RIVNUT
1/4"-20
Qty: 2**

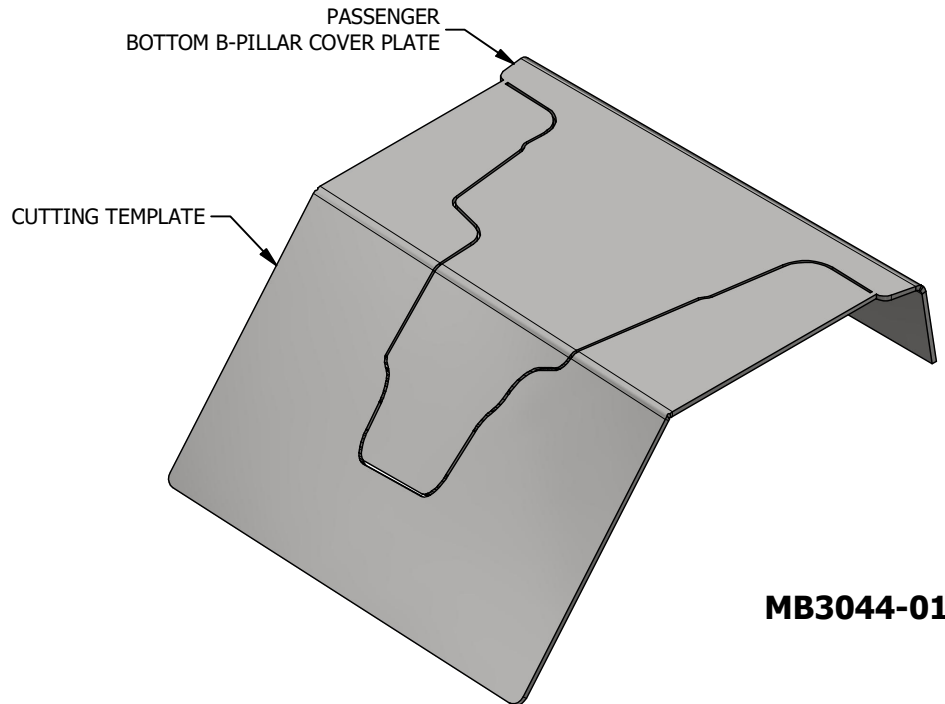


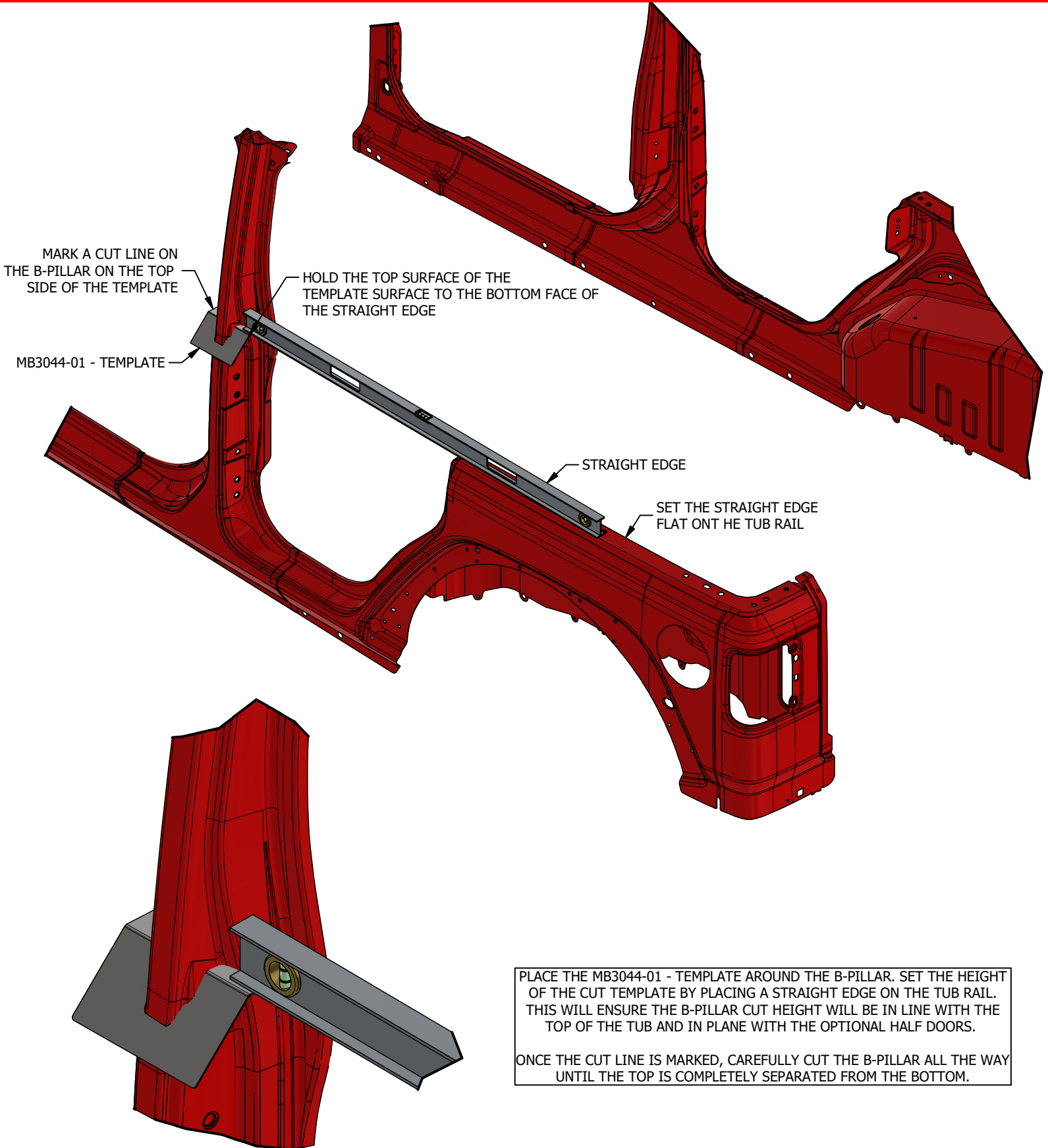
**BLIND RIVET
1/8" x 1/4"
Qty: 8**

MB3044 - Installation Instructions B-Pillar Cut Off Kit - JL

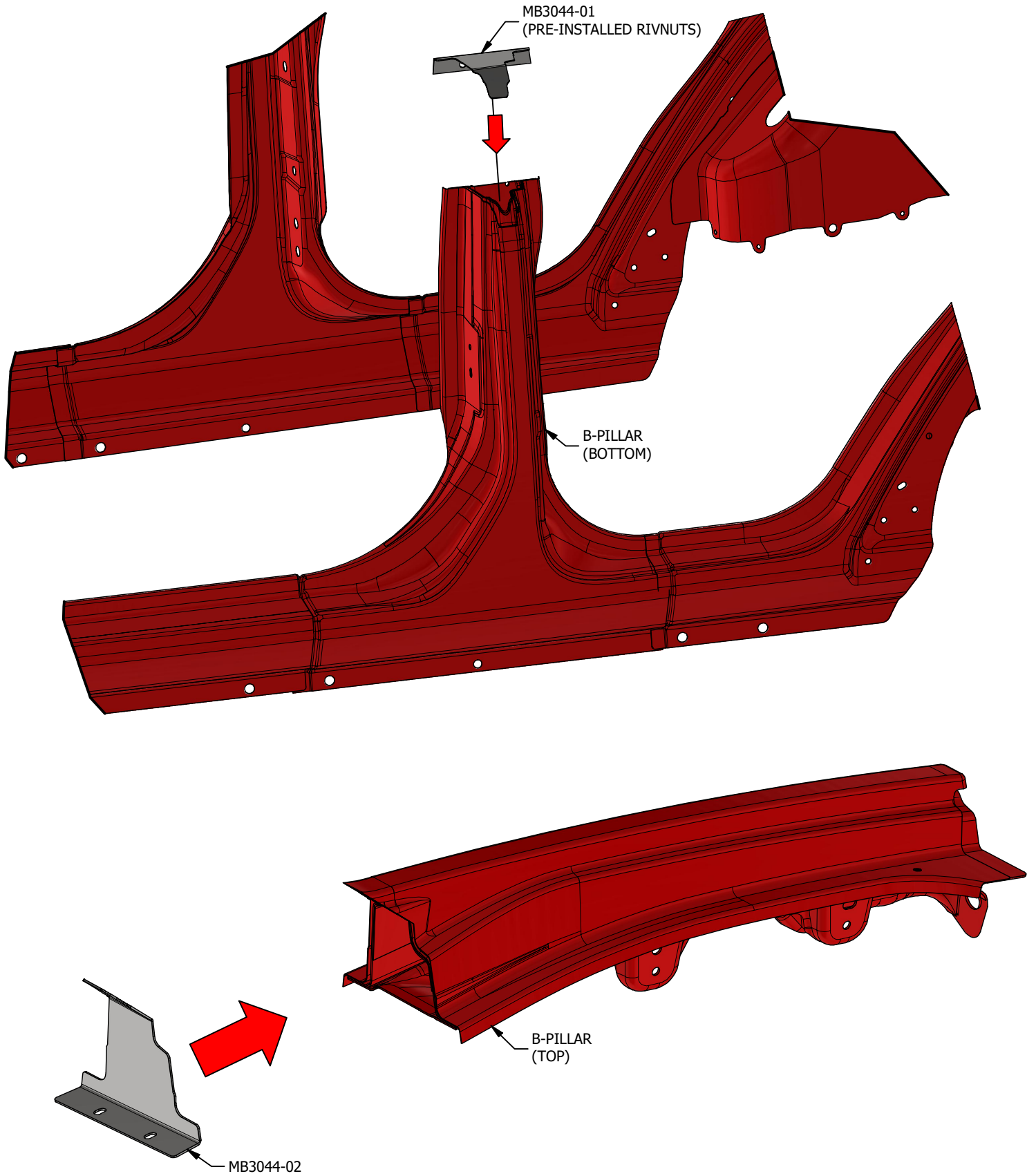


SEPARATE COVER PLATE FROM CUT TEMPLATE

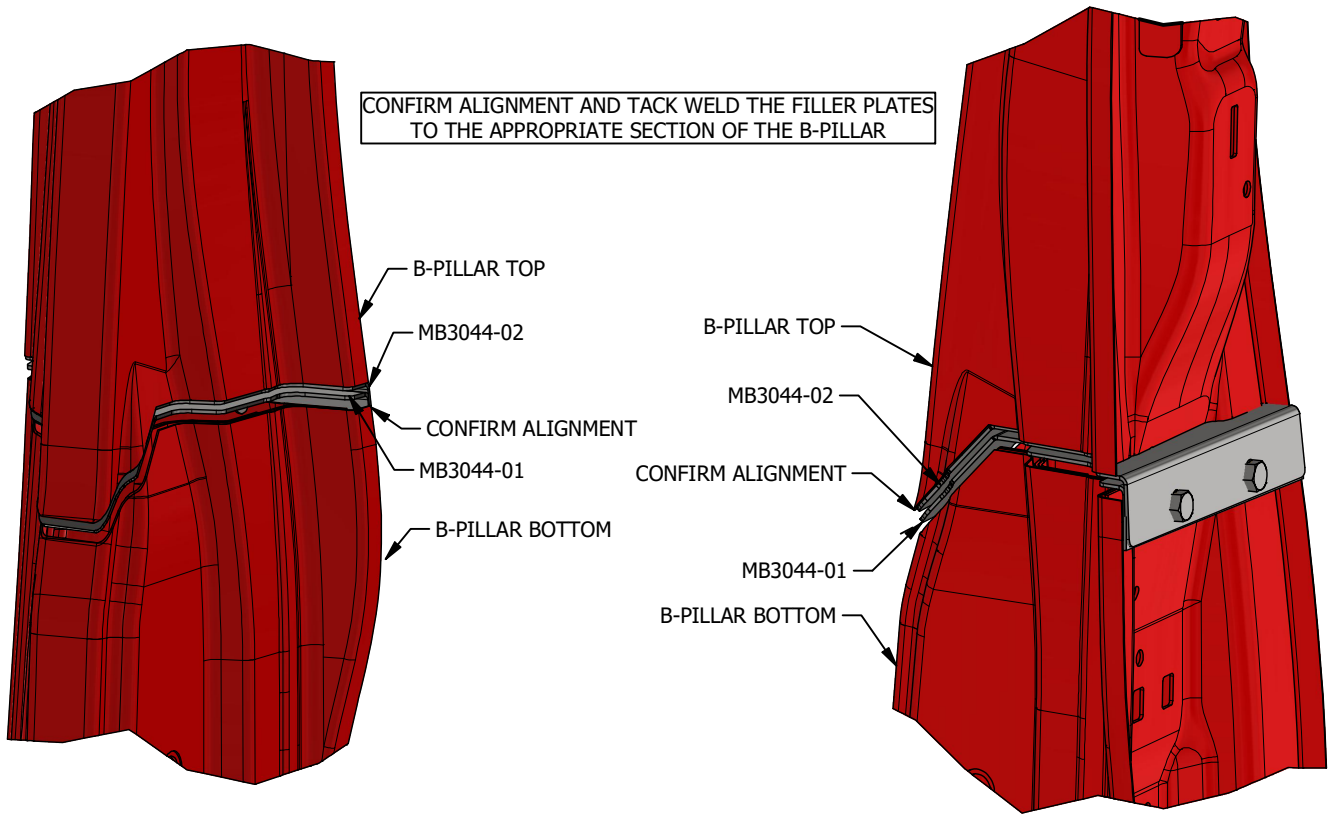
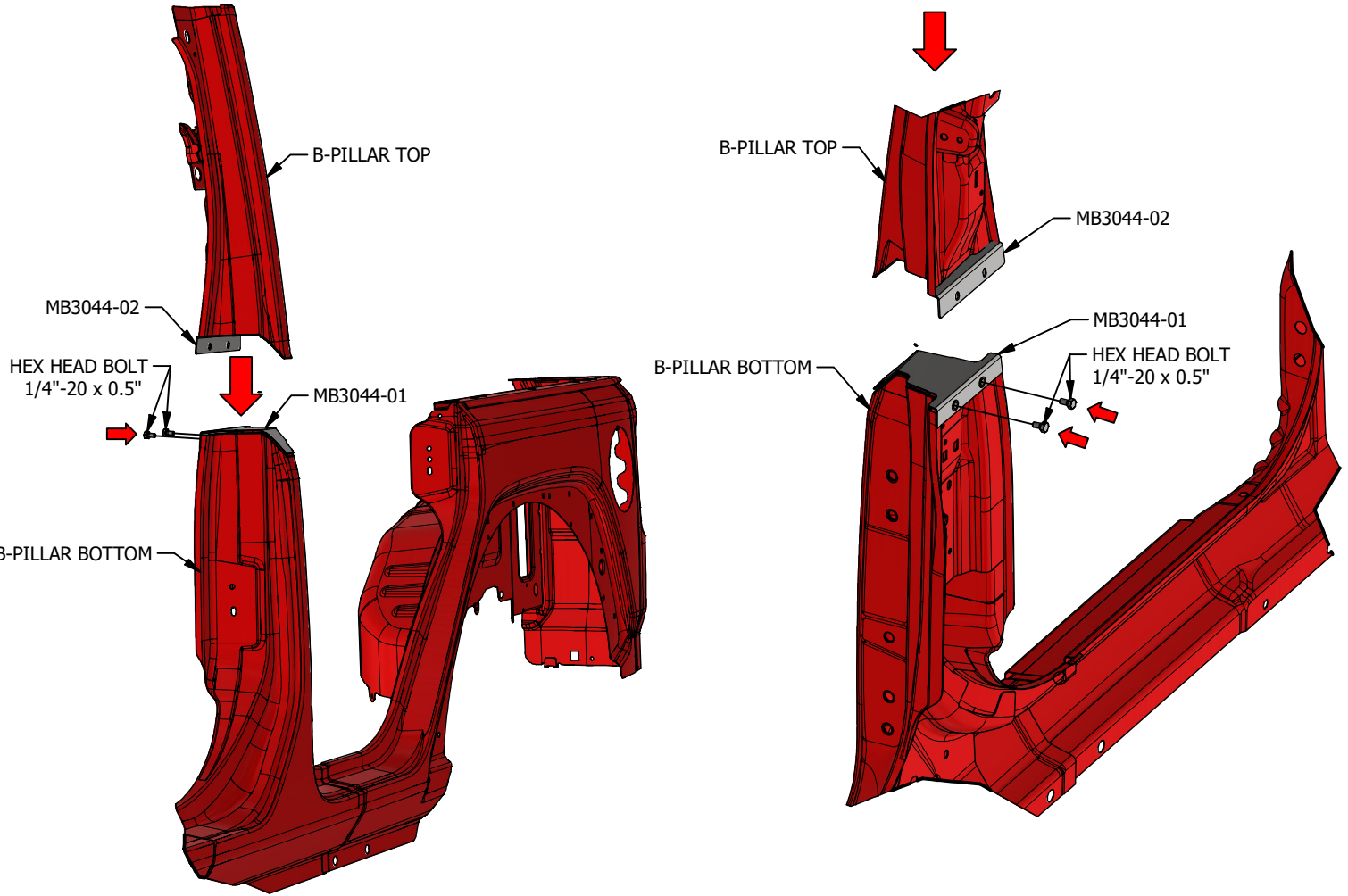


MB3044 - Installation Instructions B-Pillar Cut Off Kit - JL

MB3044 - Installation Instructions B-Pillar Cut Off Kit - JL



MB3044 - Installation Instructions B-Pillar Cut Off Kit - JL



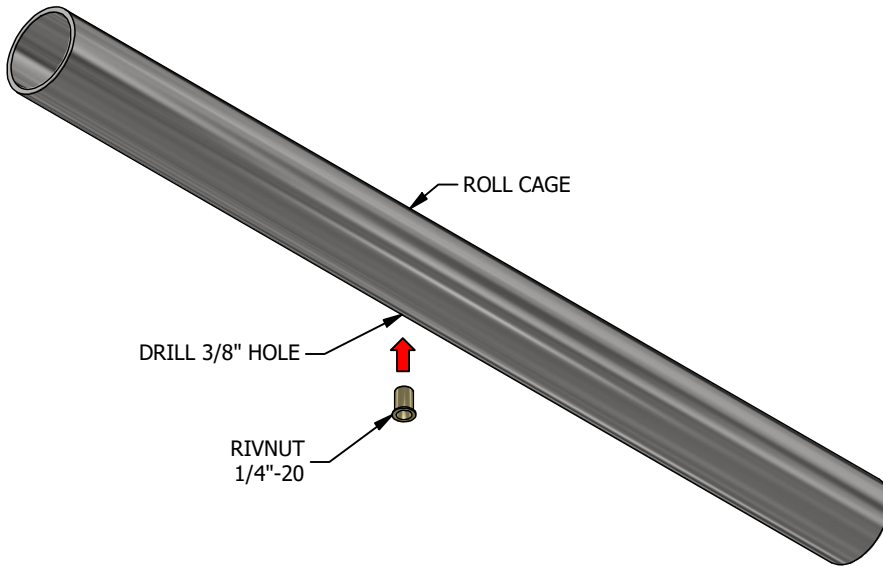
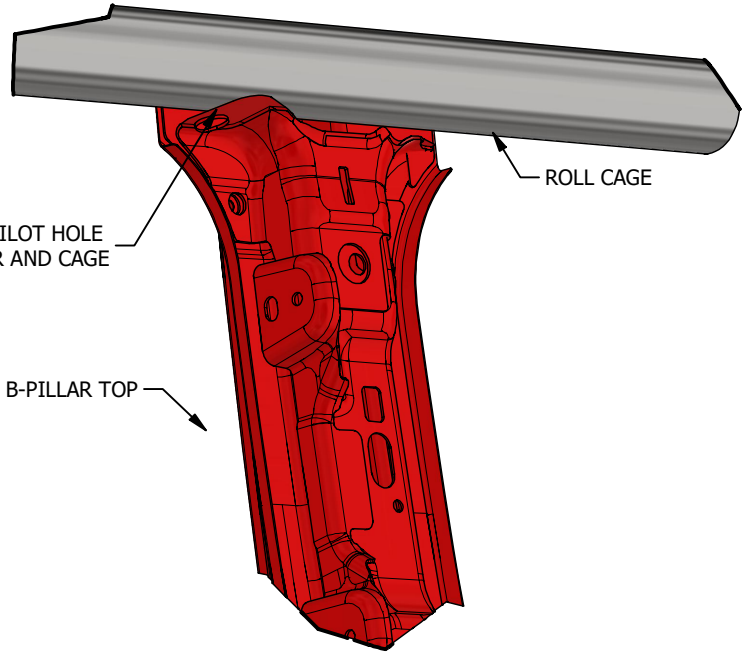
MB3044 - Installation Instructions B-Pillar Cut Off Kit - JL

TO DRILL FOR THE B-PILLAR UPPER MOUNT LOCATION, RE-MOUNT THE DOORS AND ROOF TO ENSURE PROPER FITMENT AND THAT ALL OF THE DOOR AND ROOF SEALS ARE ENGAGED. THEN DRILL THE PILOT HOLE.

DRILL A 1/8" PILOT HOLE THROUGH B-PILLAR AND CAGE

B-PILLAR TOP

ROLL CAGE



DRILL A 3/8" HOLE WHERE THE PILOT HOLE WAS DRILLED AND INSERT THE 1/4" RIVNUT

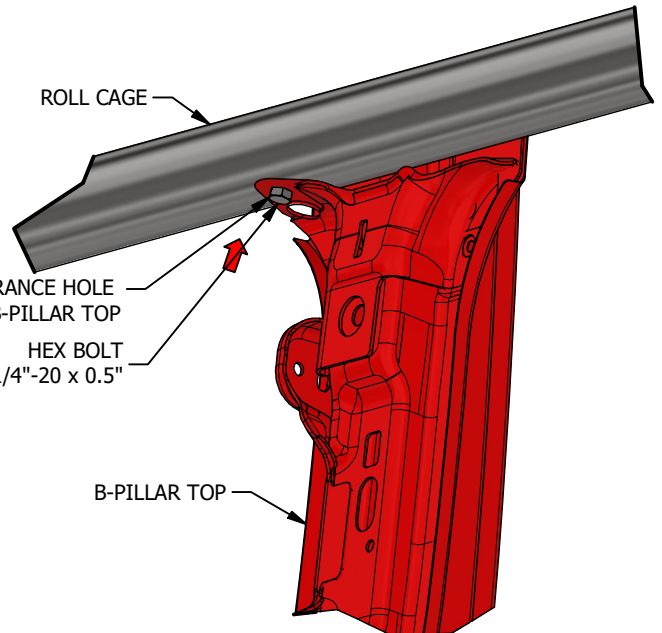
DRILL A 1/4" CLEARANCE HOLE WHERE THE PILOT HOLE WAS DRILLED IN THE B-PILLAR AND RE-ATTACHE THE B-PILLAR TOP TO THE BOTTOM AND ROLL CAGE USING A 1/4"-20 HEX BOLT

DRILL 1/4" CLEARANCE HOLE INTO B-PILLAR TOP

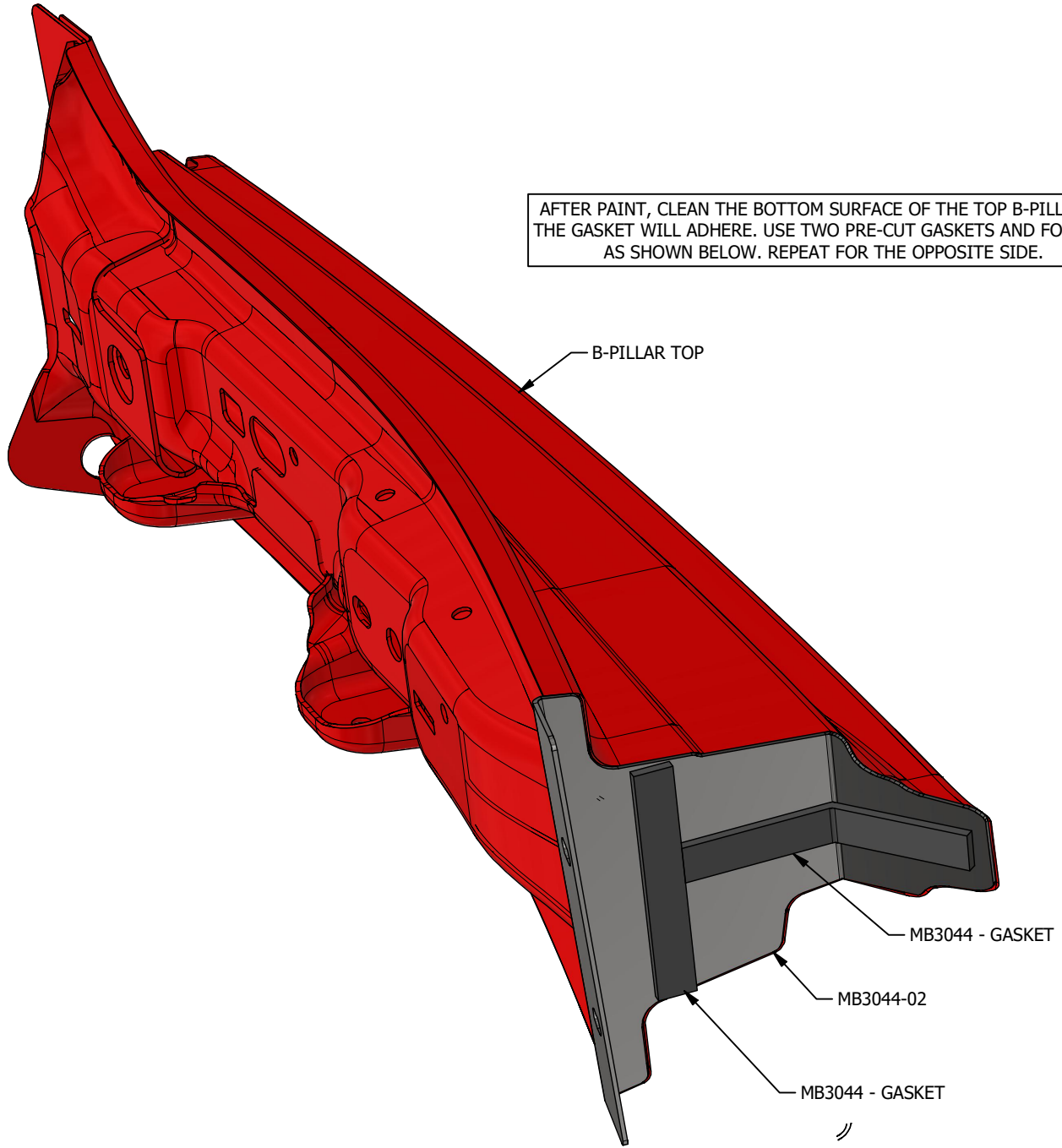
HEX BOLT 1/4"-20 x 0.5"

ROLL CAGE

B-PILLAR TOP



MB3044 - Installation Instructions B-Pillar Cut Off Kit - JL



MB3044 - Installation Instructions B-Pillar Cut Off Kit - JL

B-PILLAR INTERIOR PLASTIC



B-PILLAR INTERIOR PLASTIC



B-PILLAR INTERIOR PLASTIC

REMOVE THE FACTORY SLIDER PLASTIC BY SLIDING IT OUT THE BOTTOM



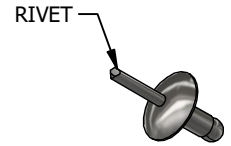
MB3044-03

B-PILLAR INTERIOR PLASTIC

DRILL FOUR (4) 7/64" HOLES



INSERT FOUR (4) RIVETS THROUGH THE PLASTIC AND INTO MB3044-03



RIVET

