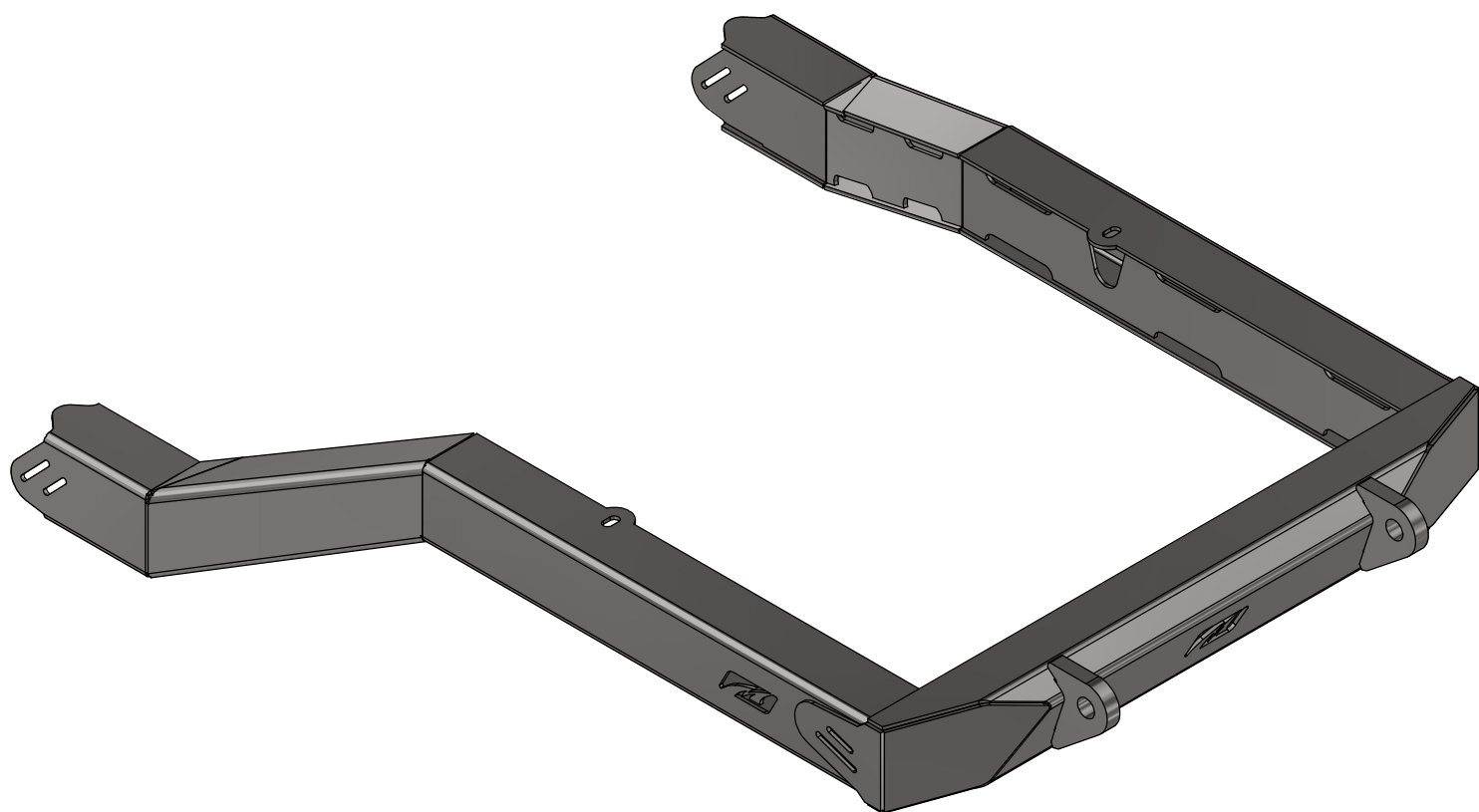


MB3008 - Assembly Instructions Back Half Frame Kit for TJ**MB3008 Back Half Frame Kit for TJ**

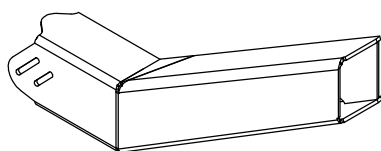
Compatible with (1997-2006 TJ)

**ASSEMBLY INSTRUCTIONS**

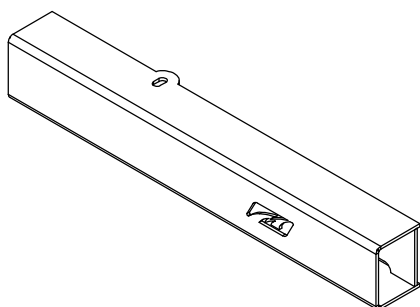
MB3008 - Shipping TJ Back Half Kit

CONTENTS

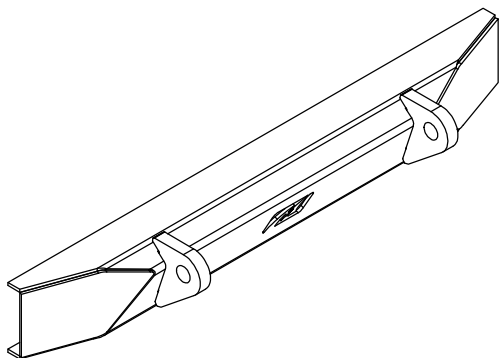
DRIVER



MB3008 - Driver Front
Qty 1

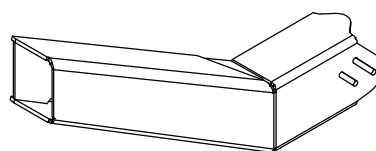


MB3008 - Driver Back
Qty 1

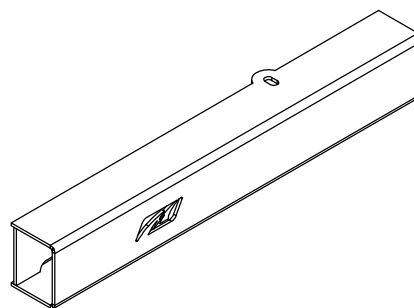


MB3008 - Bumper
Qty 1

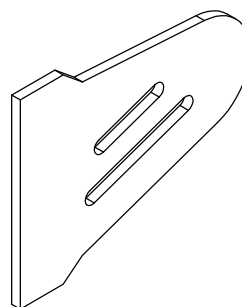
PASSENGER



MB3008 - Passenger Front
Qty 1



MB3008 - Passenger Back
Qty 1



MB3008-09
Qty 2



Preparation and Installation Guide

Compatibility: This product is designed to fit the Jeep TJ.

1. Prepare and Inspect: Unbox and inspect all components to ensure everything is included and free of damage.

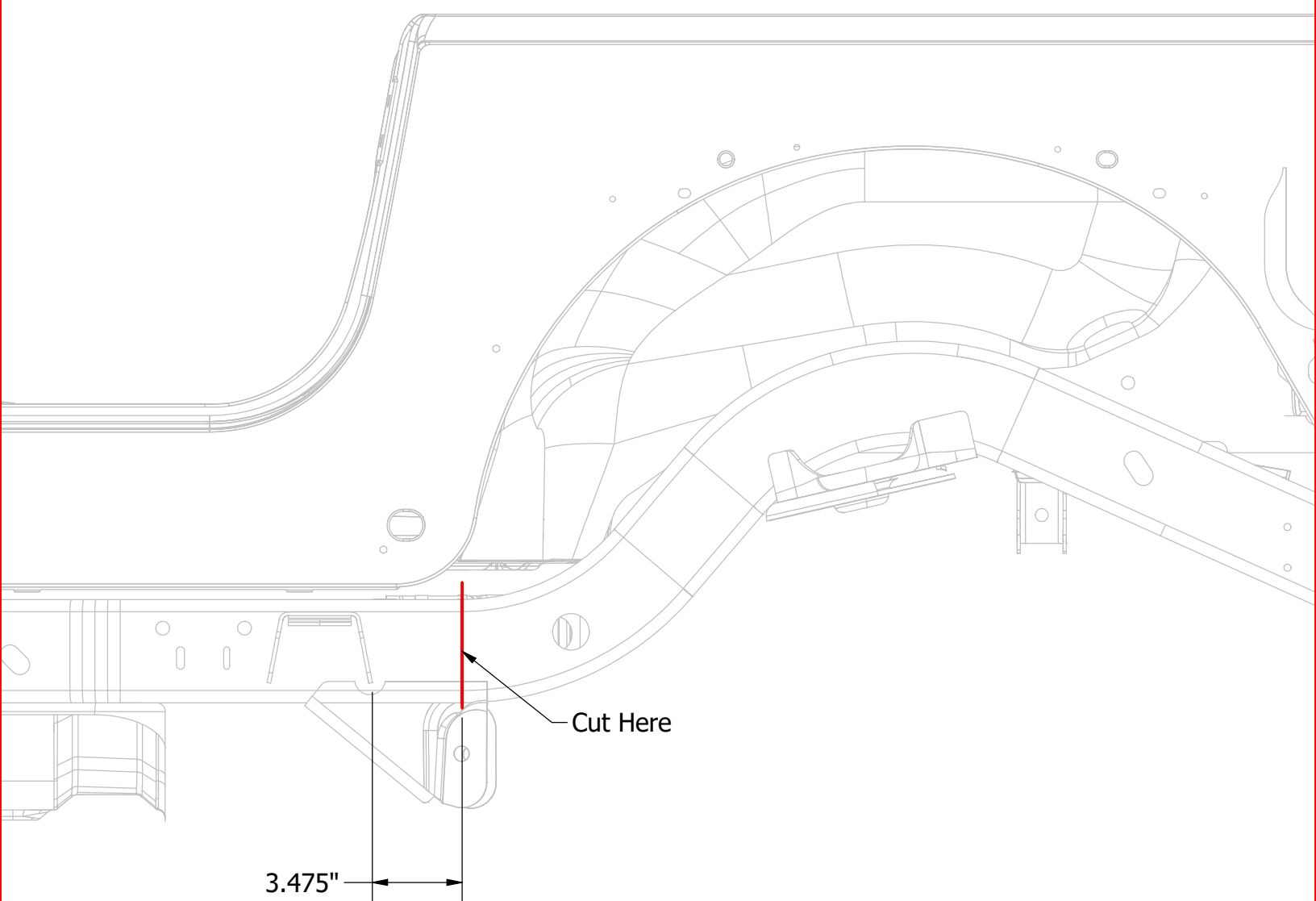
2. Prep for Install: Remove rear axle and level out the frame to make squaring the frame easier.

3. Fit up and Weld: Do not fully weld anything until you are sure the frame is squared. (The battery should be disconnected before any welding is done on the jeep)

Pro Tip: Use STEEL-IT paint, which can be welded through and easily touched up afterward.

MB3008 - Assembly Instructions Back Half Frame Kit for TJ

START BY CUTTING THE FRAME AT THE START OF THE UPWARD BEND



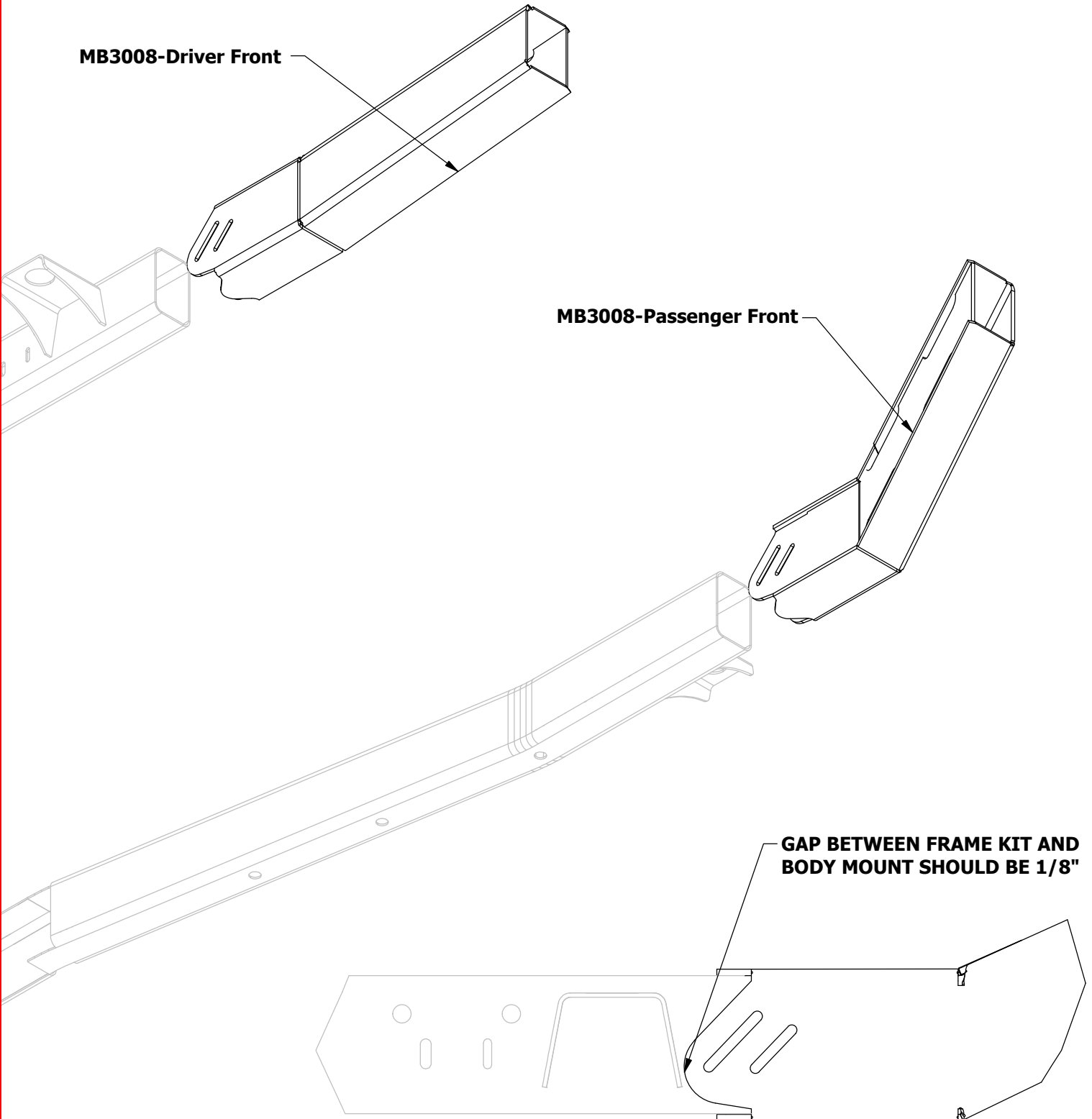
MB3008 - Assembly Instructions Back Half Frame Kit for TJ

SLIDE FRONT PARTS OF BACK HALF ON TO THE FRAME

MB3008-Driver Front

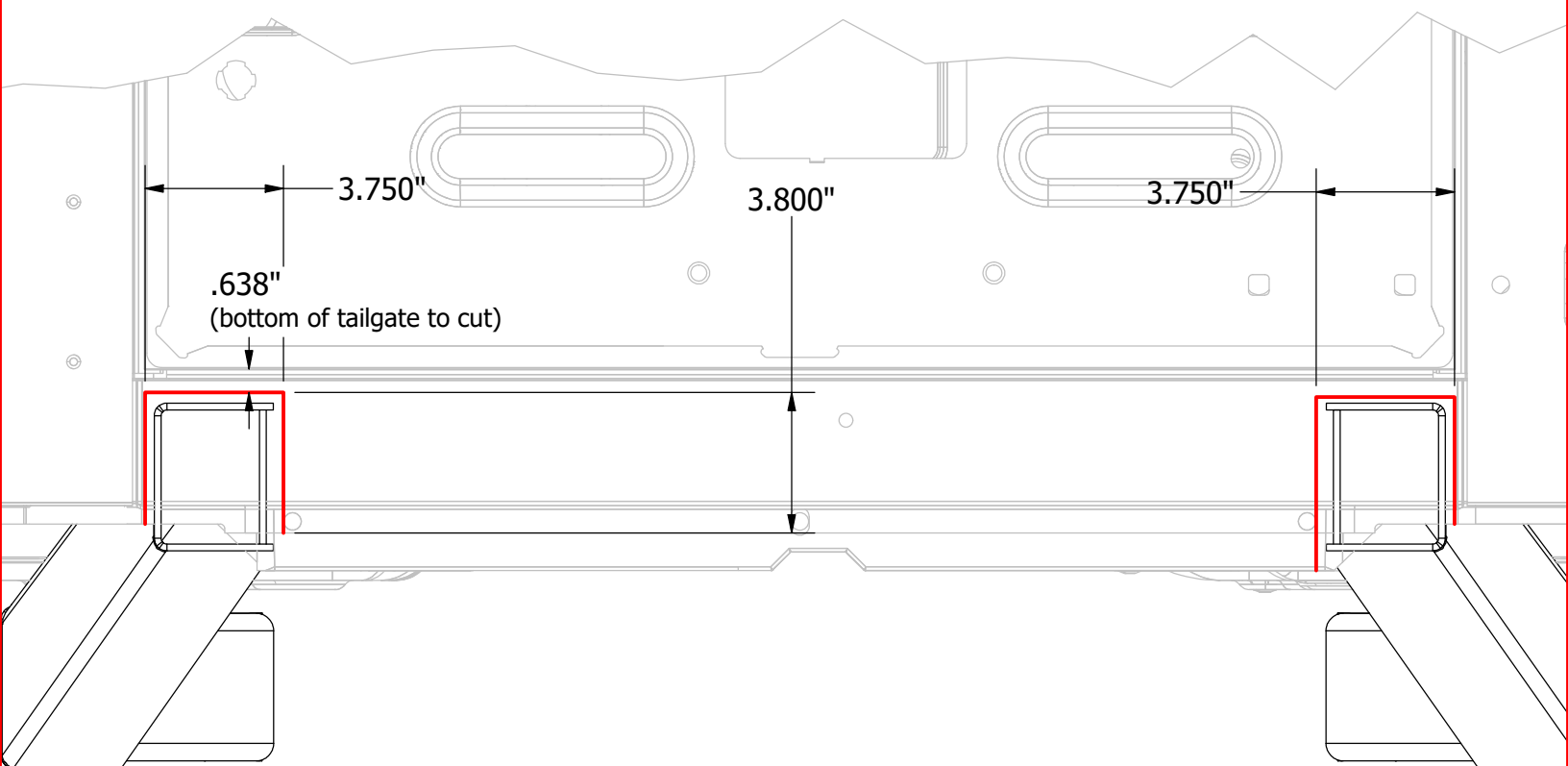
MB3008-Passenger Front

**GAP BETWEEN FRAME KIT AND
BODY MOUNT SHOULD BE 1/8"**



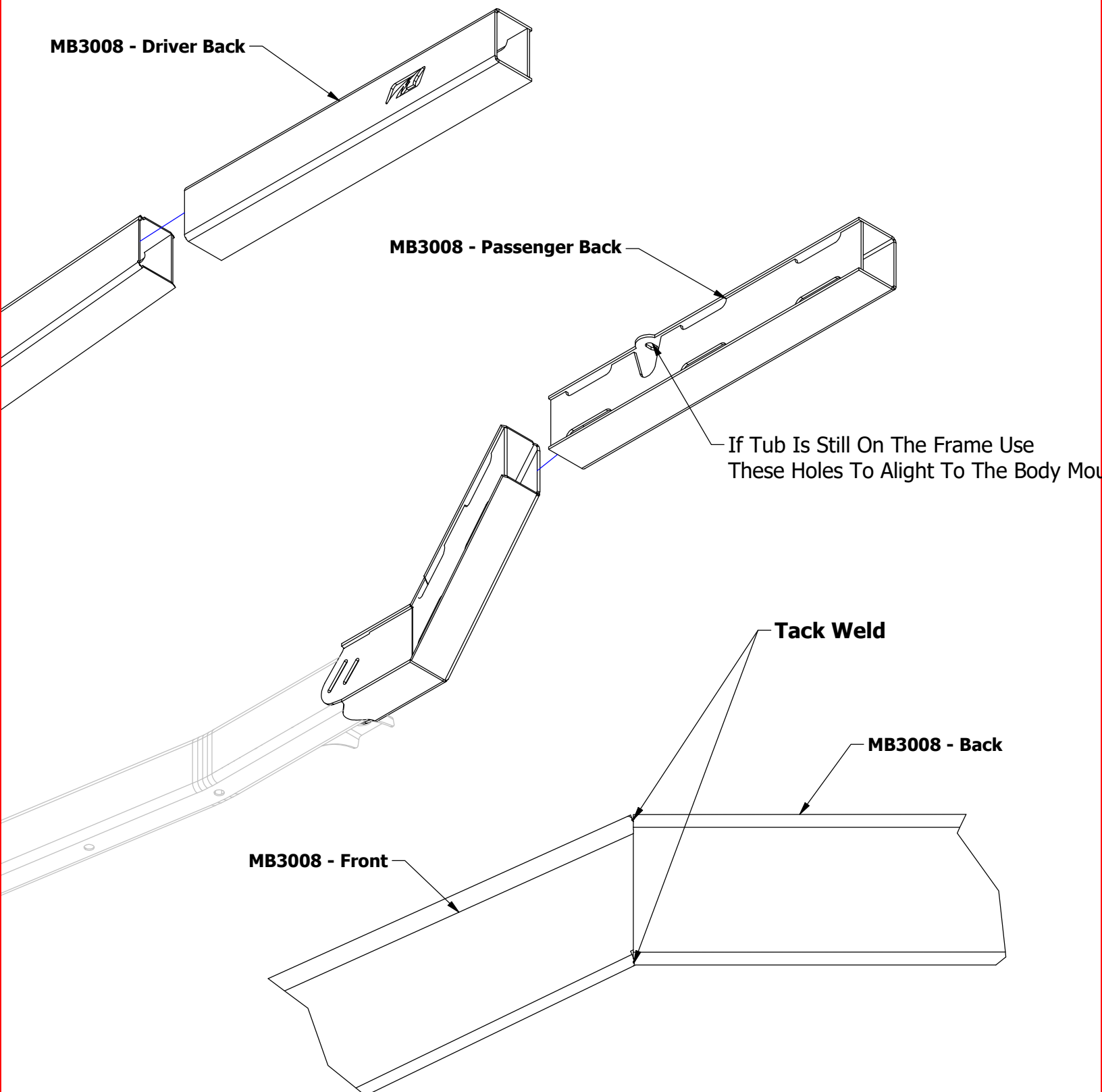
MB3008 - Assembly Instructions Back Half Frame Kit for TJ

CUT TUB TO ALLOW NEW FRAME RAILS TO FIT
 (The height of the cut will be less if you have a body lift)



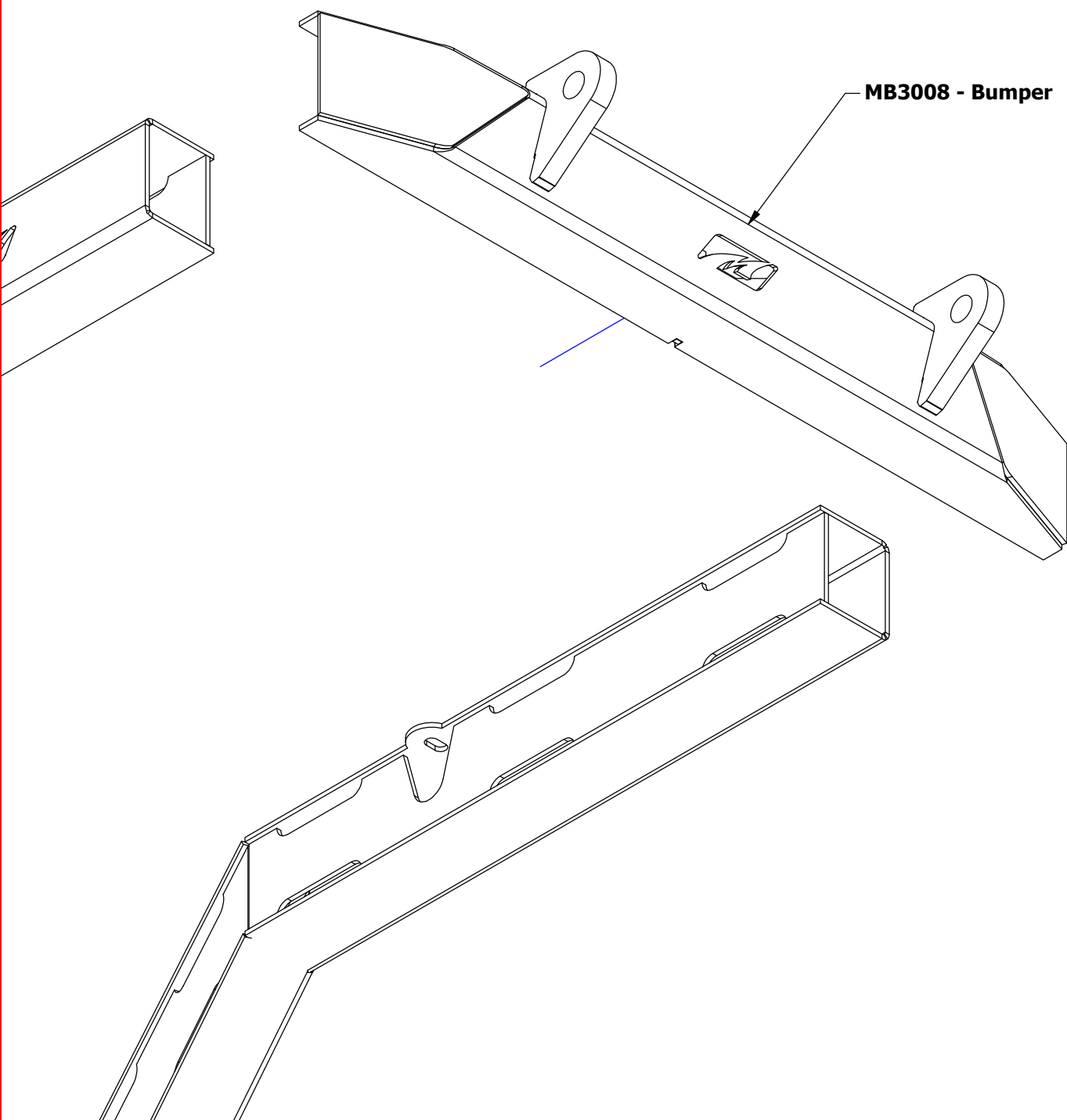
MB3008 - Assembly Instructions Back Half Frame Kit for TJ

**ALIGN THE BACK SECTIONS OF THE FRAME WITH THE
NEW FRONT SECTIONS OF THE FRAME.**



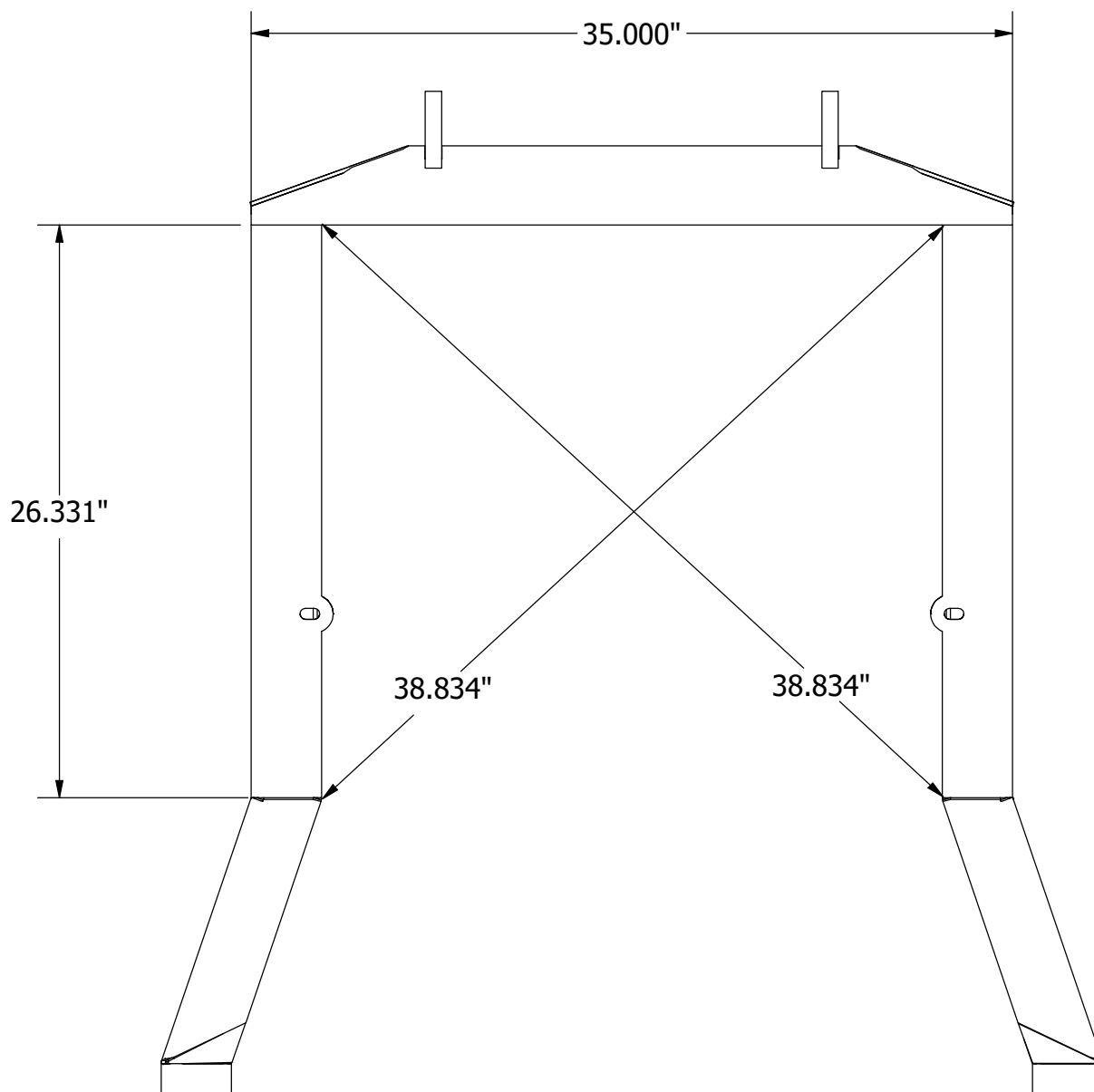
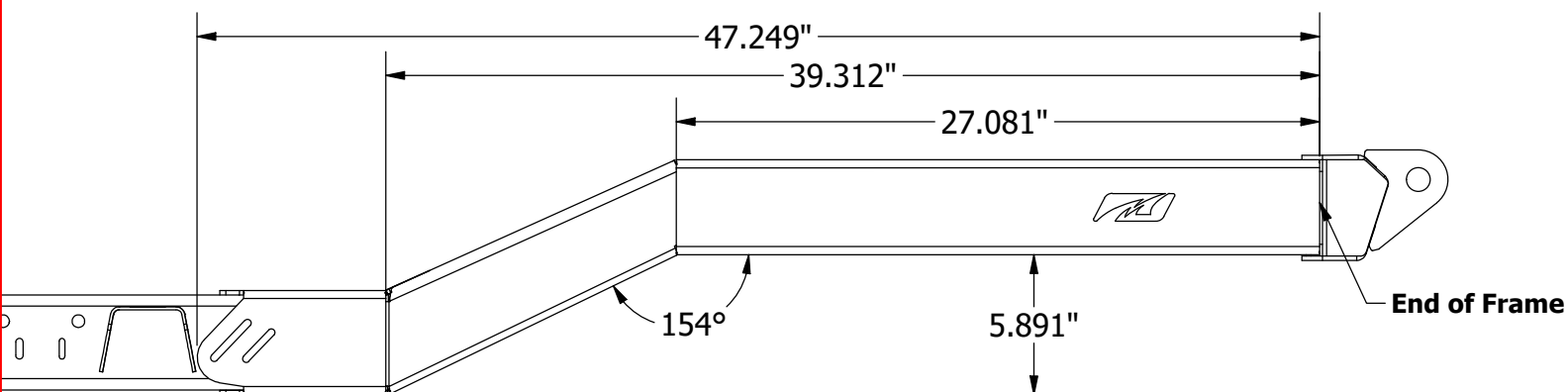
MB3008 - Assembly Instructions Back Half Frame Kit for TJ

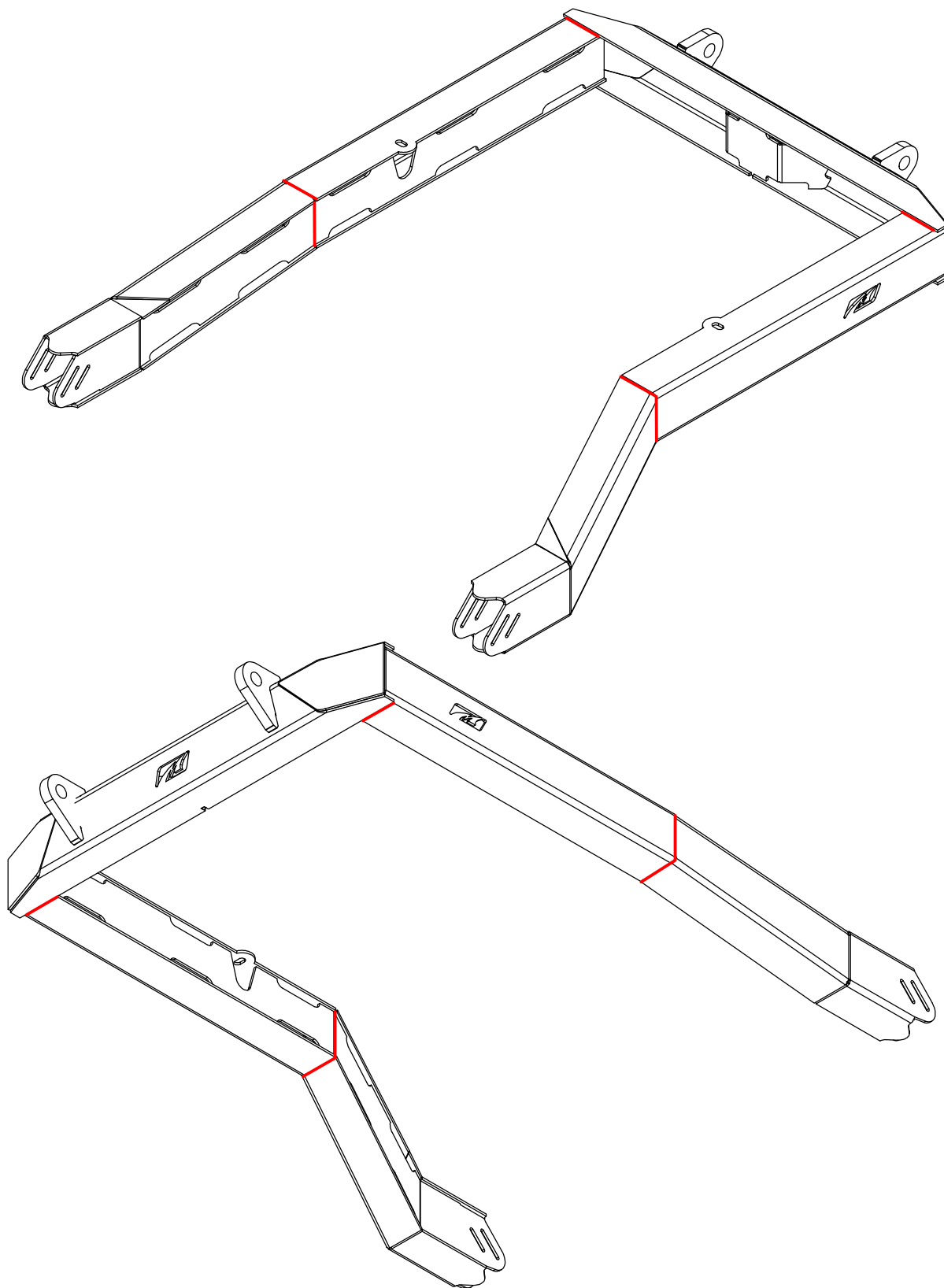
**SLIDE THE REAR BUMPER ON TO THE FRAME
AND TACK**

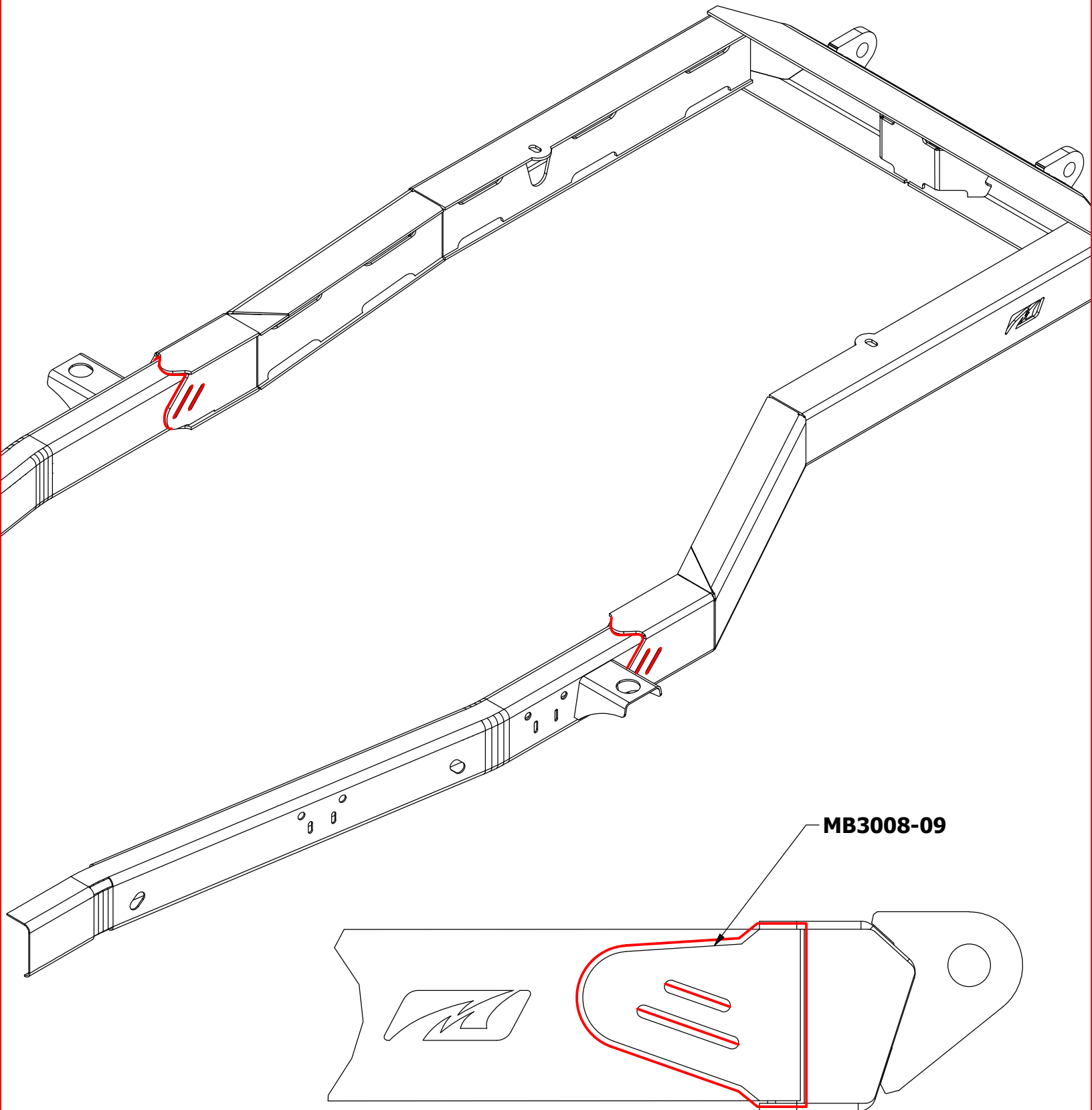


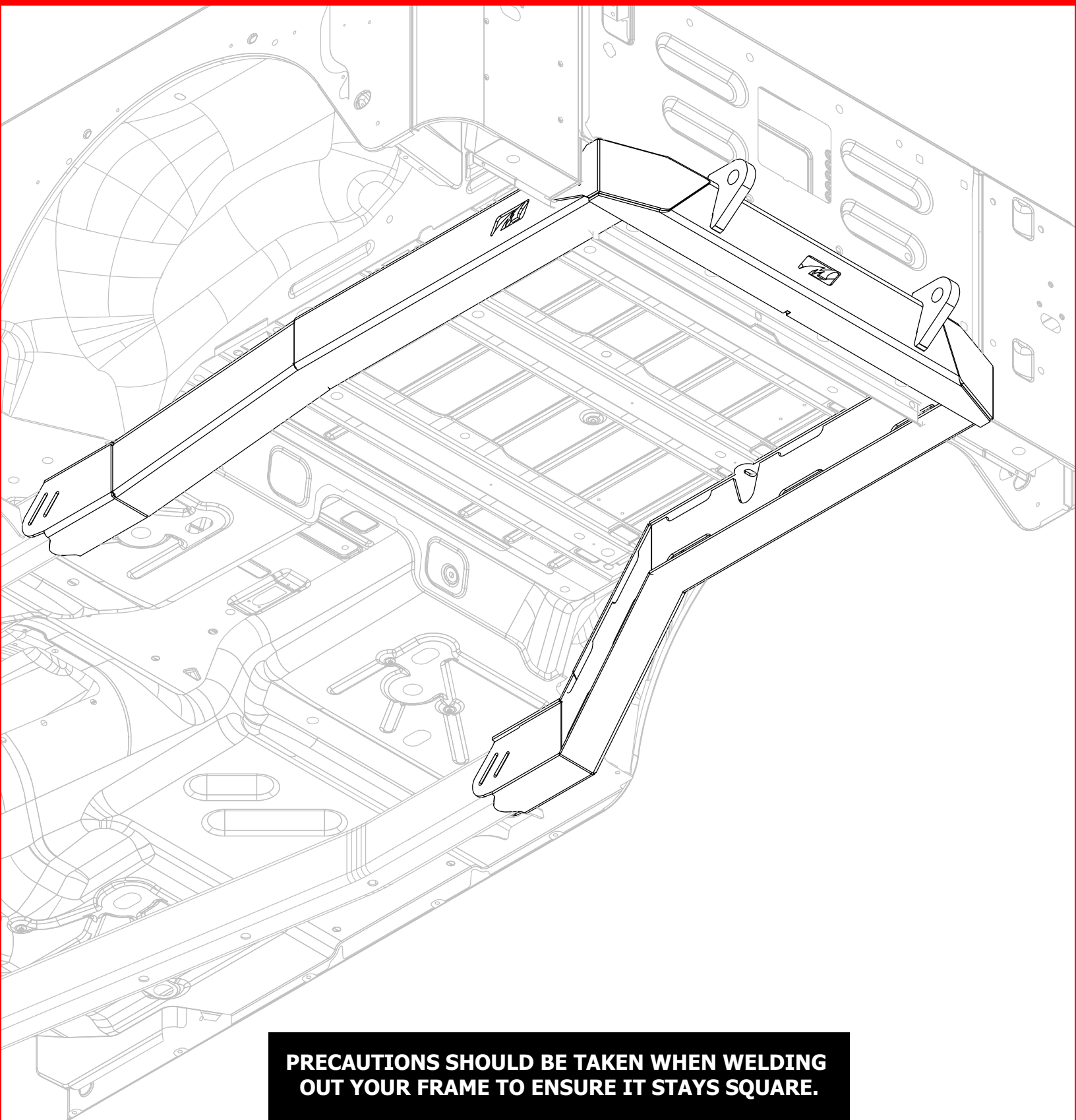
MB3008 - Assembly Instructions Back Half Frame Kit for TJ

CHECK FRAME IS SQUARE BEFORE WELDING



MB3008 - Assembly Instructions Back Half Frame Kit for TJ**WELD ALL HIGHLIGHTED AREAS**

MB3008 - Assembly Instructions Back Half Frame Kit for TJ**WELD ALL HIGHLIGHTED AREAS**

MB3008 - Assembly Instructions Back Half Frame Kit for TJ

**PRECAUTIONS SHOULD BE TAKEN WHEN WELDING
OUT YOUR FRAME TO ENSURE IT STAYS SQUARE.**