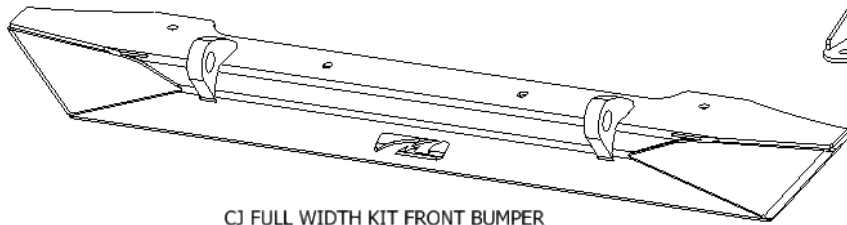
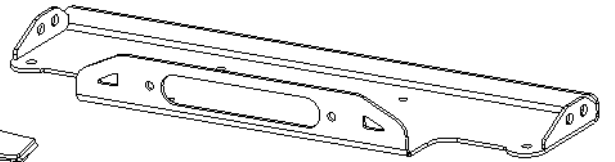


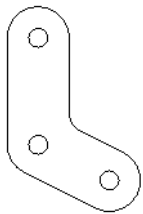
MB1522 JT Jeep CJ Full Width Axle Conversion Kit



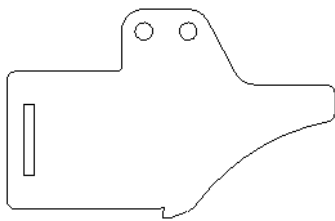
CJ FULL WIDTH KIT FRONT BUMPER
QTY 1



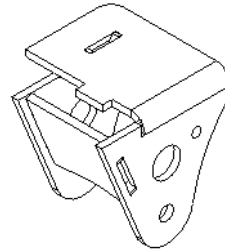
WINCH PLATE
QTY 1



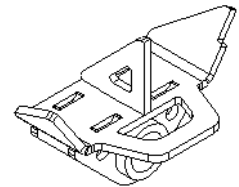
#MB1501
QTY 4



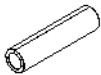
#MB1522-03
QTY 2



SPRING BUCKET, DRIVER
QTY 1



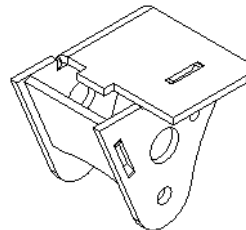
SHACKLE HANGER, PASSENGER
QTY 1



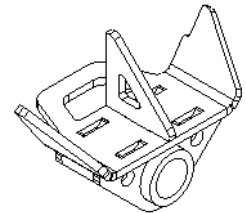
3" SLEEVE
QTY 2



#MB1522-10
QTY 2



SPRING BUCKET, PASSENGER
QTY 1



SHACKLE HANGER, DRIVER
QTY 1

MB1522 JT Jeep CJ Full Width Axle Conversion Kit**NOTE:**

This product is a “Builder Kit” meaning there will be modifications to the factory Jeep CJ frame, suspension & steering. Welding is required. This kit does **NOT** include fasteners, bushings or leaf springs. This kit is designed to reposition leaf springs to accept larger axles.

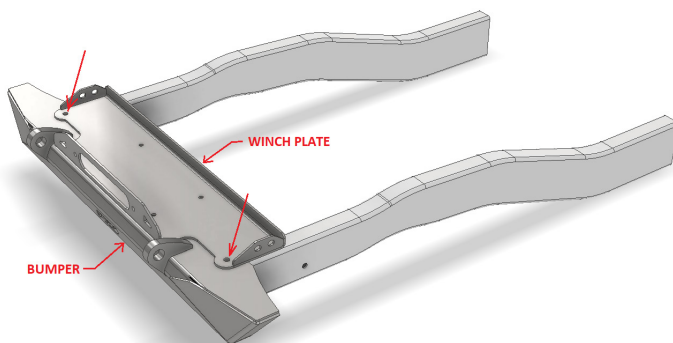
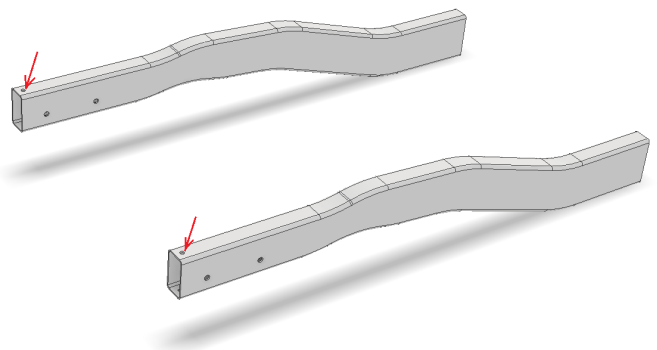
We recommend Jeep YJ **FRONT** leaf springs or Jeep CJ **REAR** leaf springs with this kit (not included). This kit is **NOT** designed to use military wrap leaf springs, however, the installer can modify the spring buckets to make them work.

These installation instructions do not show you how to disassemble your vehicle. Our installation instructions show you where to place the components supplied with the kit. We recommend that all components be fully welded to the frame after assembly. We recommend welding to be performed by a qualified welder.

1

Remove front axle, steering & all bolt-on parts on the underside of the frame from the body mount located under the front side of the door going forward. Using a grinder or cutting torch, remove all factory leaf spring hangers. Grind areas smooth.

Note the arrows in the reference image. These arrows point to the holes in the factory frame that will be used to position & align the front bumper & winch plate supplied with the kit.

**2**

Place bumper on front frame using holes to align. Place the Winch Plate on top of the bumper using the alignment holes to position. We recommend using bolts to secure position. Bolts not included.

MB1522 JT Jeep CJ Full Width Axle Conversion Kit

3

Position plate #MB1522-03 where indicated (both driver side & passenger side). Do NOT bolt yet. Place plate #MB1522-10 into the slot in plate #MB1522-03 (both driver & passenger side).

The four arrows in the reference image show you where to place bolts. Bolts not included.

Tack weld bumper to frame. Tack weld plates #MB1522-02 (2 locations) & #MB1522-10 (2 locations) to the bumper & to the frame. Do NOT tack weld the Winch Plate. It is designed to be removable.

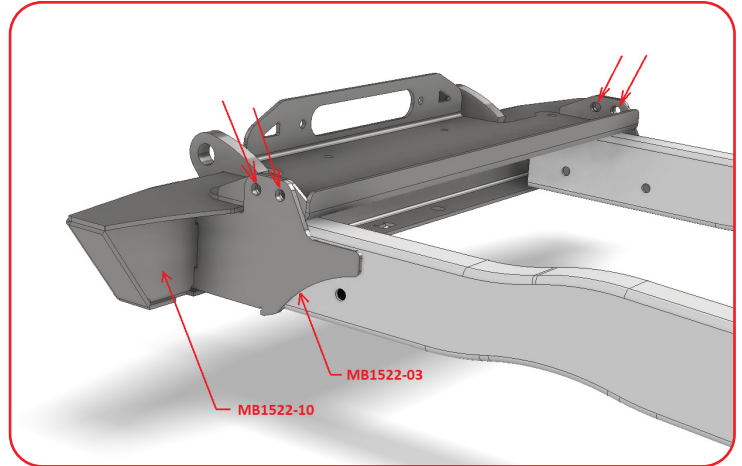
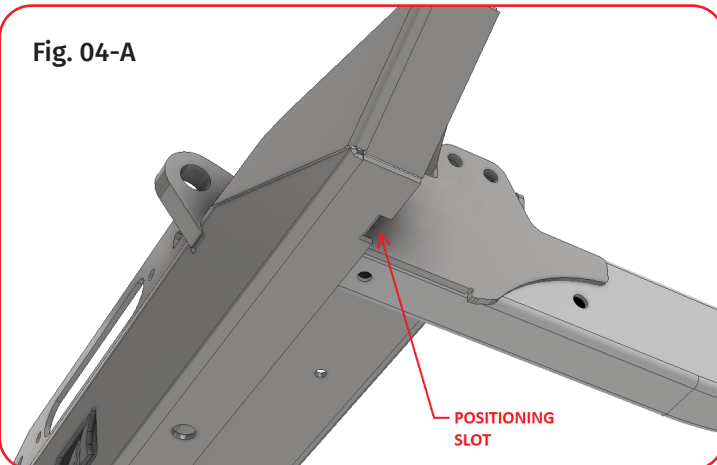


Fig. 04-A



4

Using the positioning slots in the bumper & the positioning tabs in the Spring Buckets, place the spring buckets into position. (Fig. 04-A)

There is one Spring Bucket for the driver side & one Spring Bucket for the passenger side. The side with the top flange is intended to be placed towards the outside of the bumper/frame. The Spring shown in Fig. 04-B shows the Driver Side.

Tack weld Spring Buckets to bumper & frame. (Fig. 04-C)

Fig. 04-B

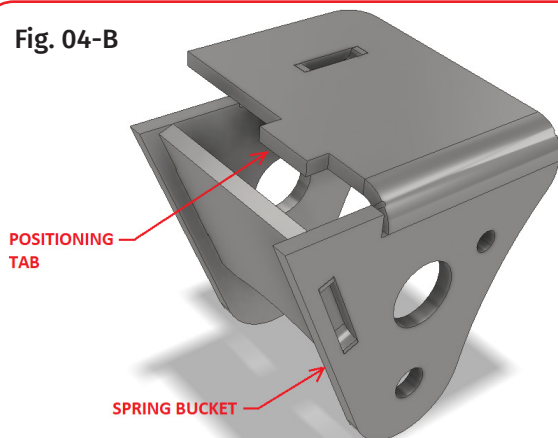
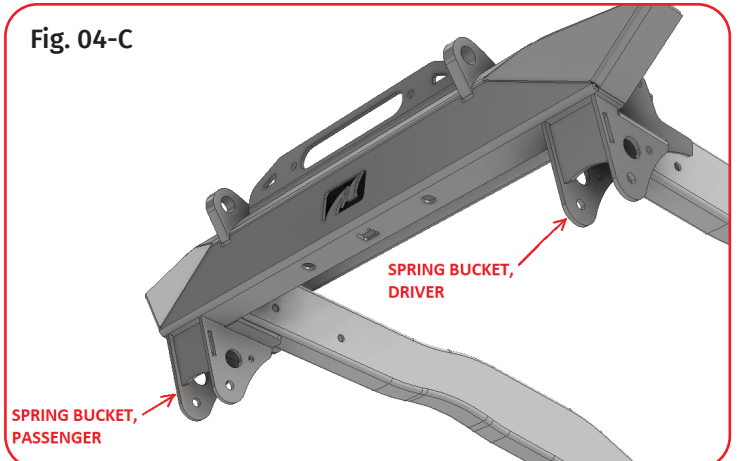


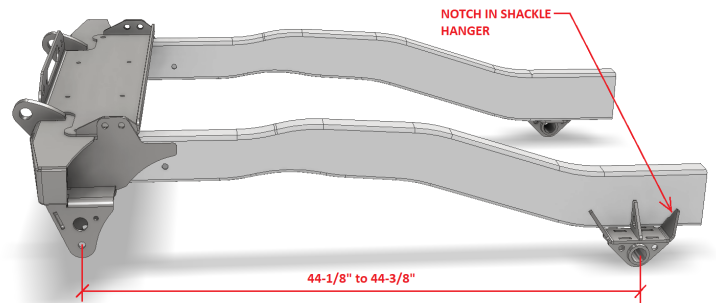
Fig. 04-C



MB1522 JT Jeep CJ Full Width Axle Conversion Kit**5**

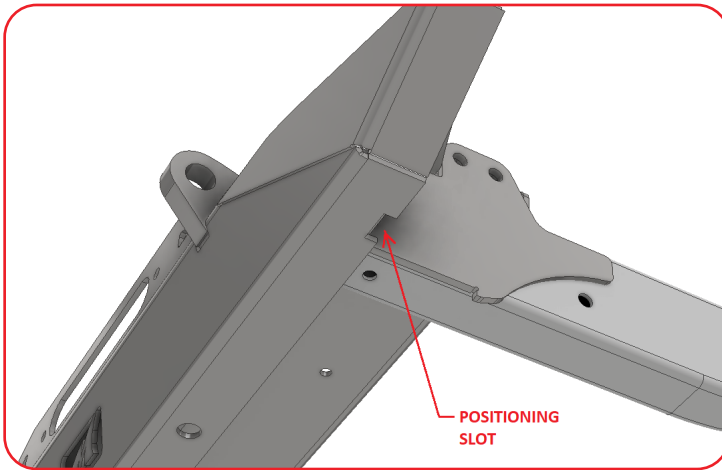
There is one prewelded Shackle Hanger for the driver side & one prewelded Shackle Hanger for the passenger. There is a notch in the prewelded Shackle Hanger that is intended to be positioned with the factory body mount. The notch in the Shackle Hanger is intended to face rearward.

Clamp the Shackle Hangers using the dimensions shown. Tack weld both Shackle Hangers to frame.

**6**

Assemble bushings & bushing liners in the Shackle Hangers. Bushings sold separately

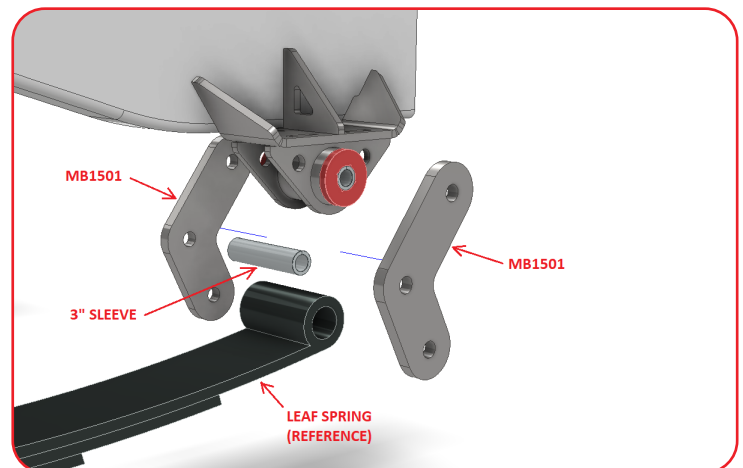
(https://www.motobilt.com/product/spring_bushing_kit_full_width_and_stretch_kits).

**5**

Assemble Shackle Plates #MB1501 & 3" Sleeves as shown. Fasteners not included.

Assemble leaf spring as shown. Leaf Spring not included.

Fully weld all kit components to frame.



MB1522 JT Jeep CJ Full Width Axle Conversion Kit

