

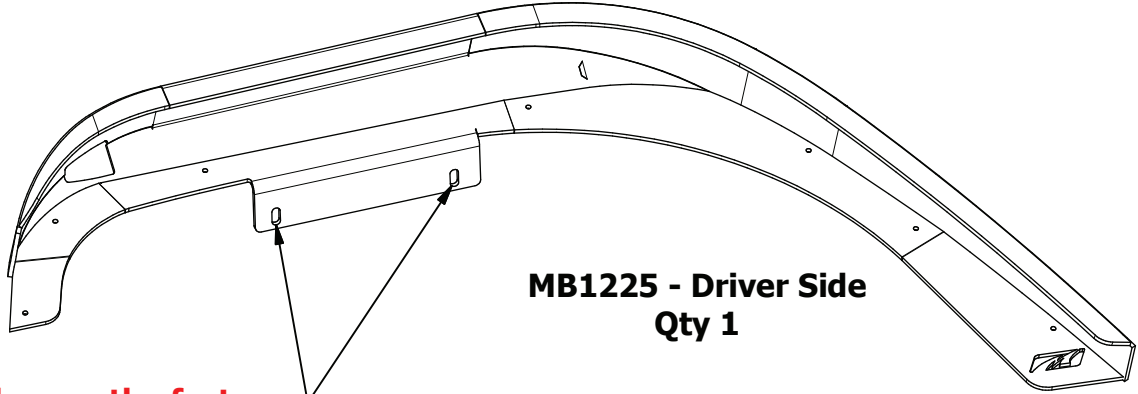
MB1225 JK/JKU Front Highline Fenders**ASSEMBLY INSTRUCTIONS**

Fits 2007 thru 2018 Jeep JK 2 Door & JKU 4 Door vehicles



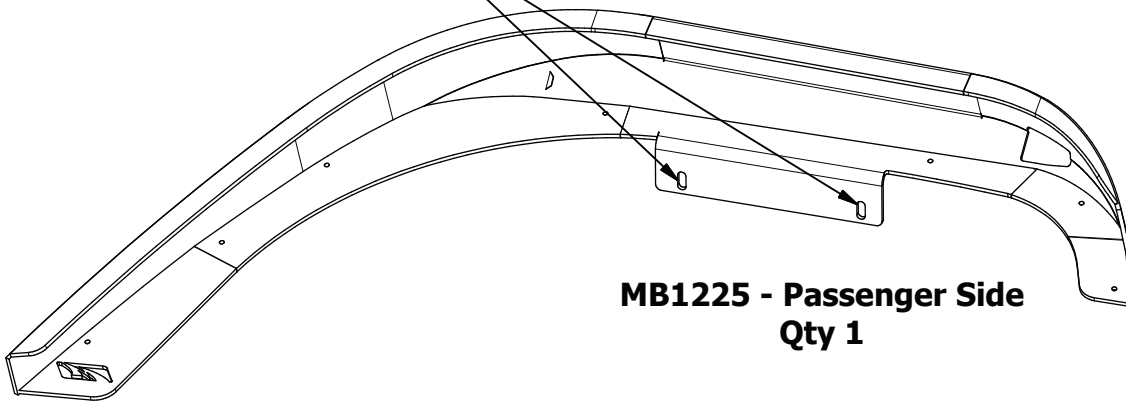
MB1225 JK/JKU Front Highline Fenders

CONTENTS

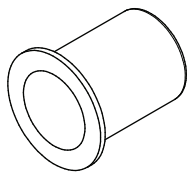


**MB1225 - Driver Side
Qty 1**

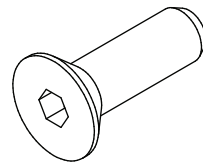
NOTE: You will reuse the factory hardware for these locations



**MB1225 - Passenger Side
Qty 1**



**Rivnut, 5/16"
Qty 16
(Includes 2 Spares)**



**Countersunk Screw
5/16"-18 UNC x 1.00" Long
Qty 16
(Includes 2 Spares)**

MB1225 JK/JKU Front Highline Fenders

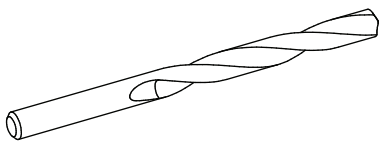
ASSEMBLY - STEP 1

1. We recommend to dry fit your new front fenders **BEFORE** painting or powder coating them.
2. Remove your factory front fender flares & front inner fenders.
3. Clean all sheet metal.
4. To prevent scratches in the paint of your vehicle, we recommend to apply masking tape over all mounting areas.
5. Clamp new front fender into position, and mark each hole position using a marker, as shown. Be sure to check for even reveals all around. Check that the underside holes align with the two factory threaded holes in the inner structure.



MB1225 JK/JKU Front Highline Fenders**ASSEMBLY - STEP 2**

1. Unclamp & remove the new front fender from STEP 1.
2. Using a 17/32" drill bit, drill holes in each of the marked locations.



**Drill Bit Size
17/32"**

MB1225 JK/JKU Front Highline Fenders**ASSEMBLY - STEP 3**

1. Using a rivnut installation tool, install all of the supplied 5/16" rivnuts into each of the drilled holes.



Rivnut, 5/16"
Qty 16
(Includes 2 Spares)

MB1225 JK/JKU Front Highline Fenders

ASSEMBLY - STEP 4

1. Position front fender over rivnuts.
2. Using a 3/16" hex bit, loosely install the supplied 5/16" countersunk screws.
3. Reuse the factory hardware to install the fasteners located up inside the inner structure.
4. Check for final fitment.
5. Remove all fenders. Paint or powder coat. Then install for final installation.
6. PRO TIP (for final installation): Apply anti-seize compound to 5/16" countersunk screws. Do not over torque countersunk screws & rivnuts.



MB1225 JK/JKU Front Highline Fenders

FINAL

