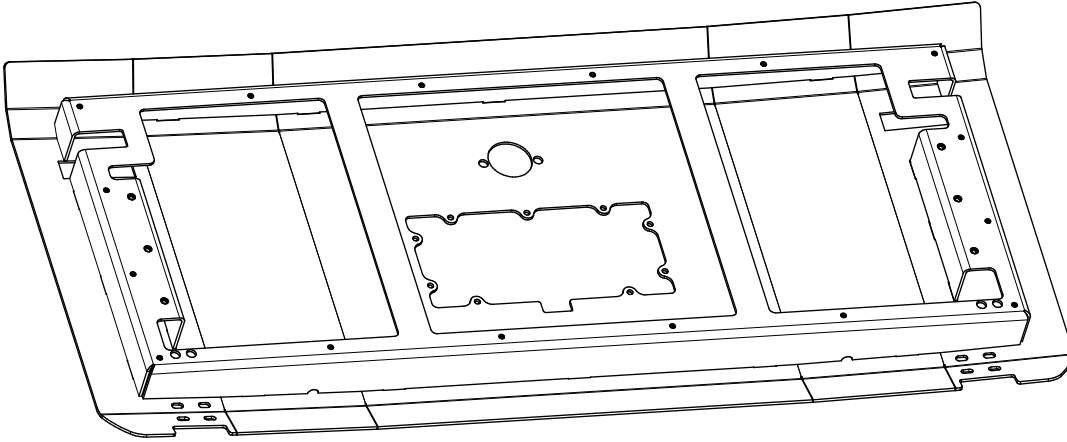
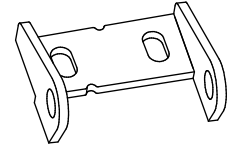


MB1217 - Assembly Drop Down Tailgate for JL/JLU

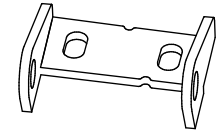
CONTENTS



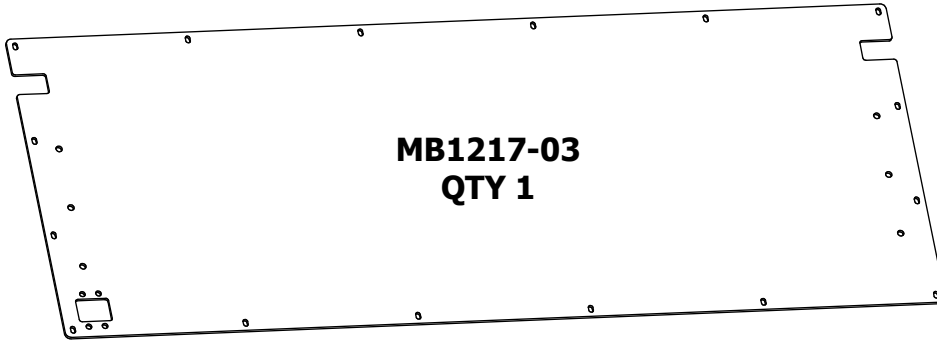
**MB1217 - TAILGATE WELDMENT
QTY 1**



**MB1217 - HINGE DRIVER
QTY 1**



**MB1217 - HINGE PASSENGER
QTY 1**



**MB1217-03
QTY 1**



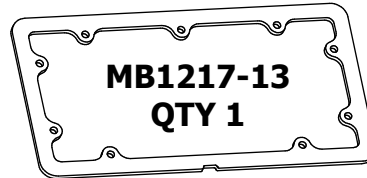
**MB1217-11
QTY 2**



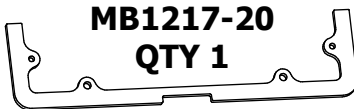
**MB1217-22
QTY 2**



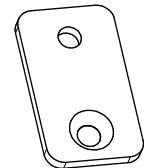
**MB1217-14
QTY 1**



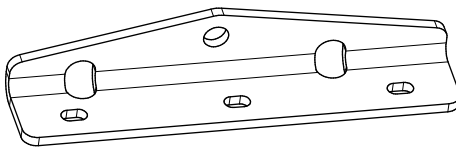
**MB1217-13
QTY 1**



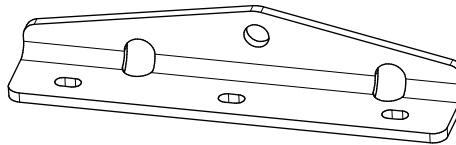
**MB1217-20
QTY 1**



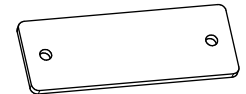
**MB1217-12
QTY 1**



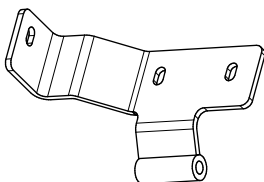
**MB1217-10
QTY 1**



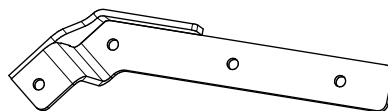
**MB1217-10_MIR
QTY 1**



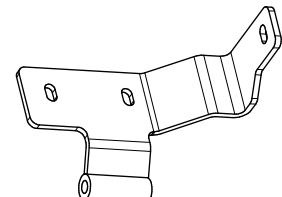
**MB1217-23
QTY 1**



**MB1217 - HINGE PIVOT DRIVER
QTY 1**



**MB1217 - CABLE MOUNT PASSENGER
QTY 1**



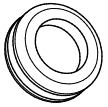
**MB1217 - HINGE PIVOT PASSENGER
QTY 1**

MB1217 - Assembly Drop Down Tailgate for JL/JLU

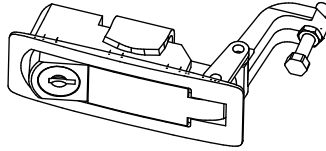
CONTENTS



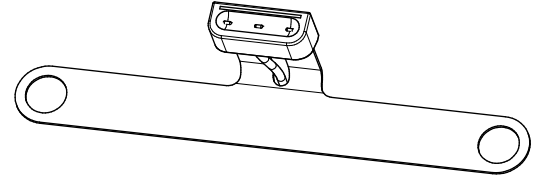
**MB1217 - EDGE TRIM
QTY 1 (45" LONG)**



**MB1217 - GROMMET
QTY 1**



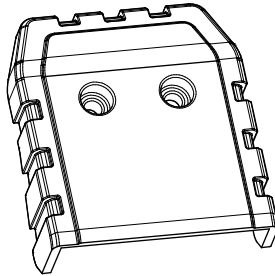
**MB1217 - LATCH
24-46mm GRIP RANGE
QTY 2**



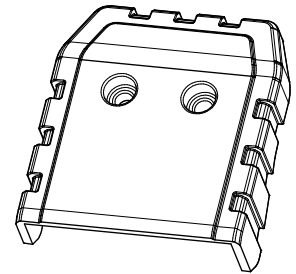
**LD-PL6
LICENSE PLATE LED LIGHT
QTY 1**



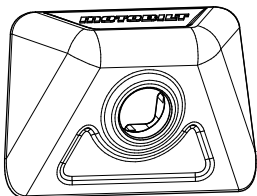
**MB1217-18
FACTORY HINGE COVER
QTY 2**



**MB1217-16
HINGE COVER DRIVER
QTY 1**



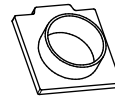
**MB1217-17
HINGE COVER PASSENGER
QTY 1**



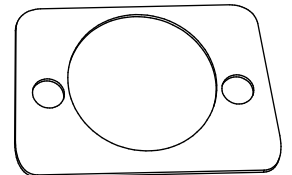
**MB1217-CM1
CAMERA MOUNT
QTY 1**



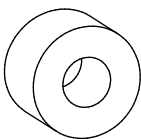
**MB1217-CM2
CAMERA BRACKET
QTY 1**



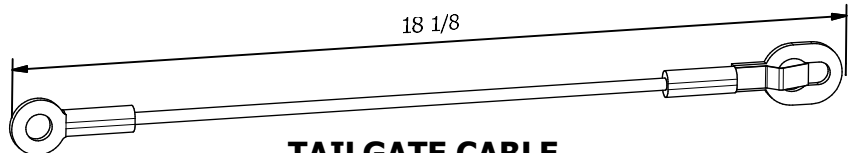
**MB1217-CM3
CAMERA SPACER
QTY 1**



**MB1217 - GASKET
QTY 1**



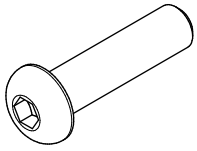
**MB1217 - TUBE SPACER
QTY 1**



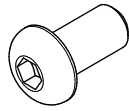
**TAILGATE CABLE
QTY 2**

MB1217 - Assembly Drop Down Tailgate for JL/JLU

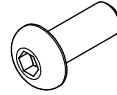
CONTENTS



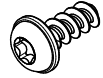
BUTTON HEAD SCREW
 $\frac{1}{4}$ "-20 X 1" LONG
 QTY 4



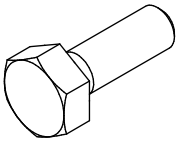
BUTTON HEAD SCREW
 $\frac{1}{4}$ "-20 X $\frac{1}{2}$ " LONG
 QTY 5



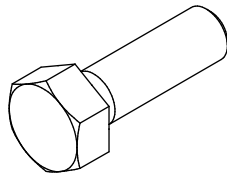
BUTTON HEAD SCREW
 #10-24 X $\frac{1}{2}$ " LONG
 QTY 20



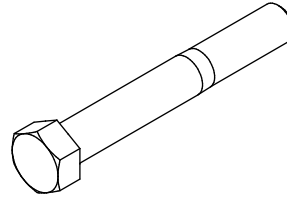
THREAD FORMING SCREW
 M4 x 10mm LONG
 QTY 4



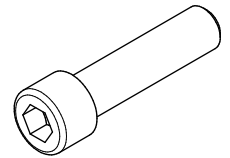
HEX BOLT
 $\frac{1}{4}$ "-20 X $\frac{3}{4}$ " LONG
 QTY 10



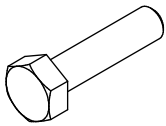
HEX BOLT
 $\frac{5}{16}$ "-18 X 1" LONG
 QTY 10



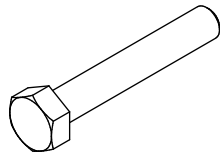
HEX BOLT
 $\frac{3}{8}$ "-16 X 2- $\frac{3}{4}$ " LONG
 QTY 2



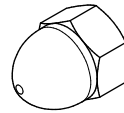
SOCKET HEAD SCREW
 $\frac{1}{4}$ "-20 X $\frac{3}{4}$ " LONG
 QTY 4



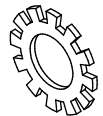
HEX BOLT
 M6 x 1.0 x 25mm LONG
 QTY 2



HEX BOLT
 M8 x 1.25 x 50mm LONG
 QTY 1



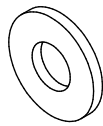
HIGH CROWN NUT,
 $\frac{1}{4}$ "-20, ZINC
 QTY 8



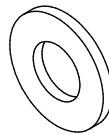
TOOTH LOCK WASHER,
 EXTERNAL, $\frac{1}{4}$ ", ZINC
 QTY 8



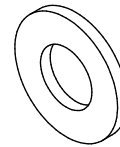
FLAT WASHER
 M5
 QTY 2



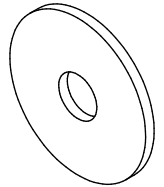
FLAT WASHER
 $\frac{1}{4}$ "
 QTY 20



FLAT WASHER
 $\frac{5}{16}$ "
 QTY 20



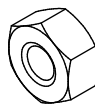
FLAT WASHER
 $\frac{3}{8}$ "
 QTY 1



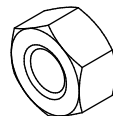
FENDER WASHER
 $\frac{1}{4}$ " x 1- $\frac{1}{4}$ " OD
 QTY 2



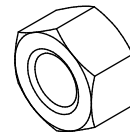
NYLOCK NUT
 #10-24
 QTY 4



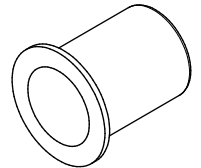
NYLOCK NUT
 $\frac{1}{4}$ "-20
 QTY 20



NYLOCK NUT
 $\frac{5}{16}$ "-18
 QTY 10



NYLOCK NUT
 $\frac{3}{8}$ "-16
 QTY 2



RIVNUT
 $\frac{5}{16}$ "-18
 QTY 4

THIS FASTENER LIST DOES INCLUDE A FEW SPARES FOR SOME FASTENERS SHOWN, THUS, YOU MAY HAVE SOME EXTRA FASTENERS LEFT OVER AFTER ASSEMBLY