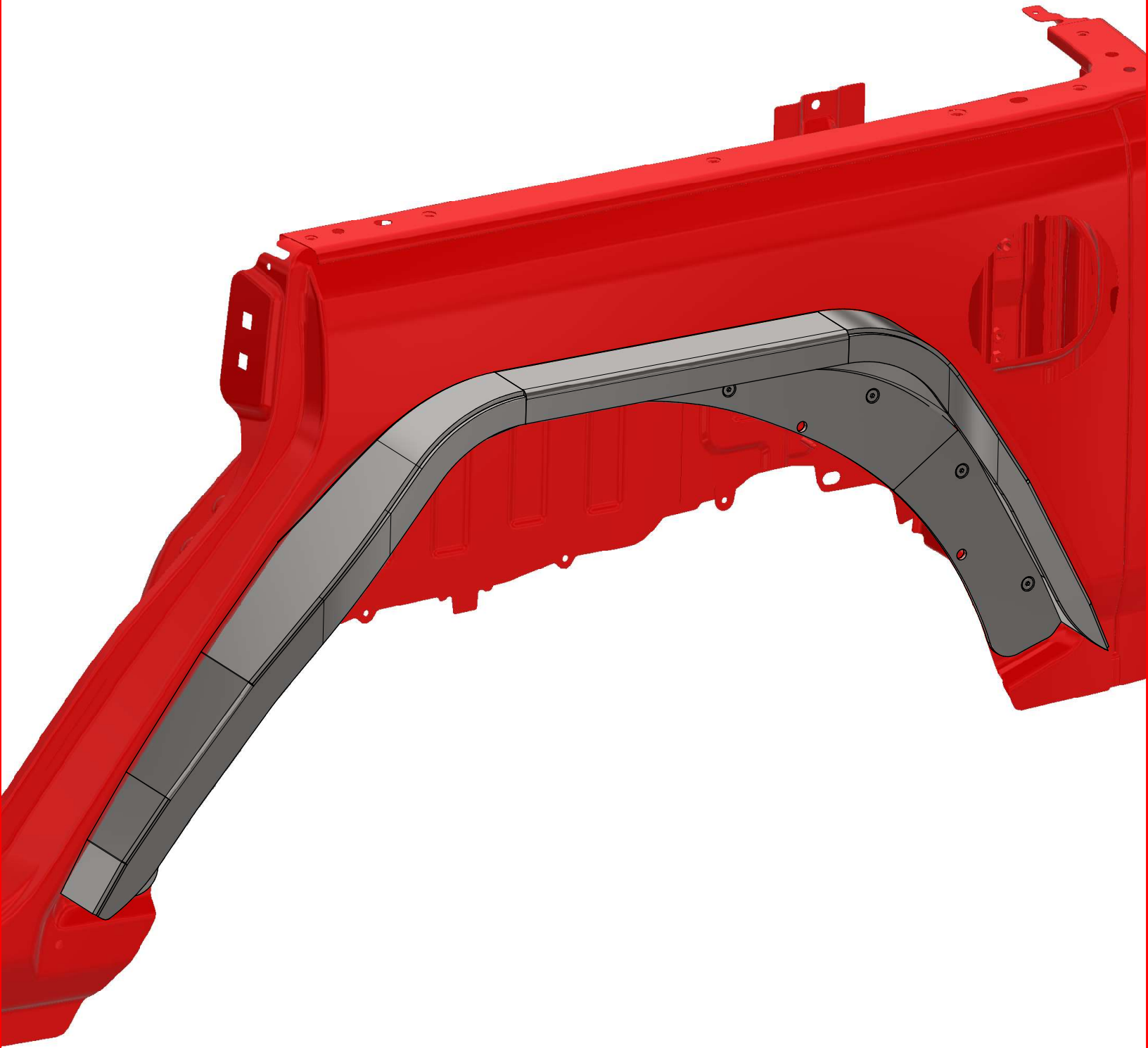


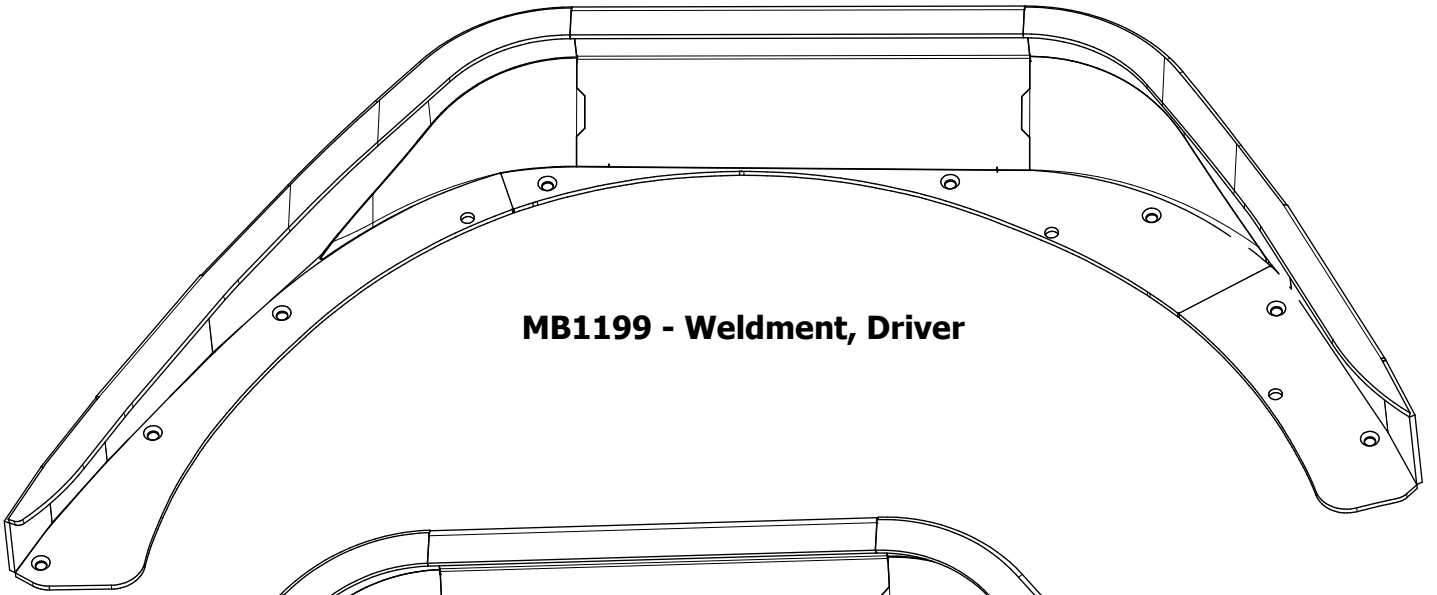
**MB1199 - Assembly JLU Rear Highline Fenders**

**ASSEMBLY INSTRUCTIONS**

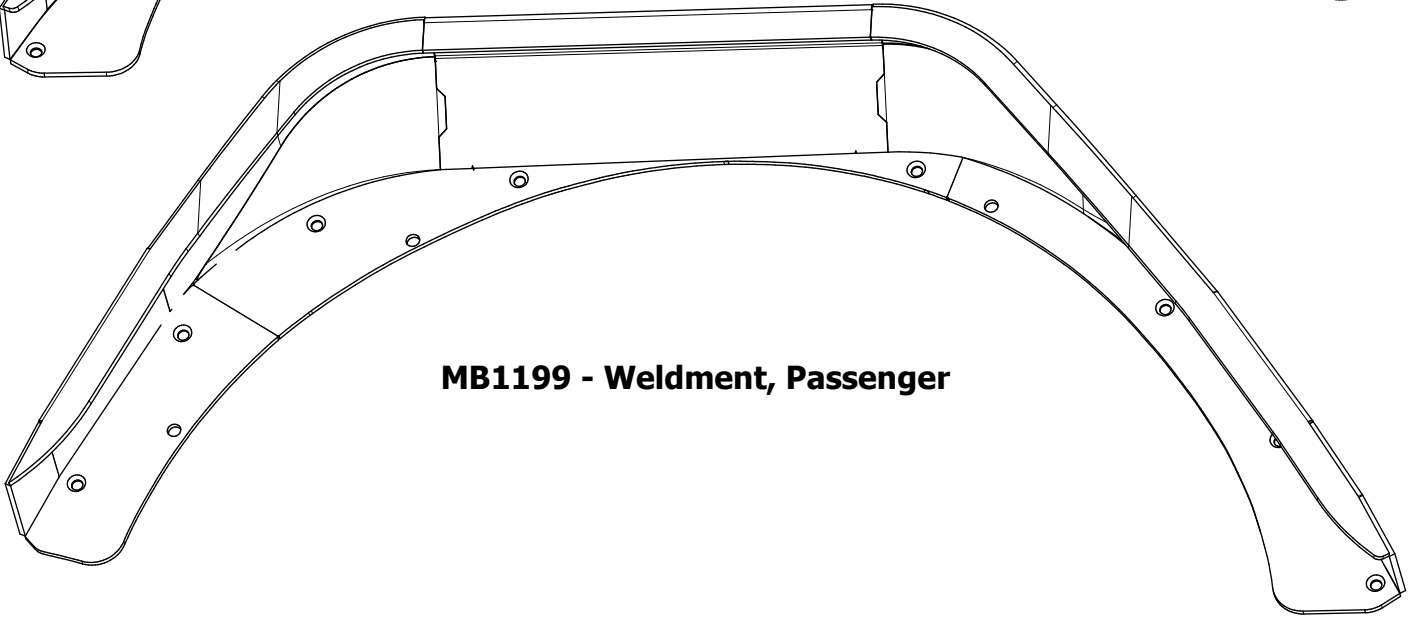


**MB1199 - Assembly JLU Rear Highline Fenders**

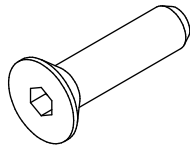
**CONTENTS**



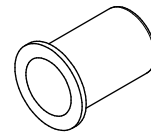
**MB1199 - Weldment, Driver**



**MB1199 - Weldment, Passenger**



**Countersunk Screw**  
**1/4"-20 UNC x 1.00" Long**  
**Qty 16**



**Rivnut**  
**1/4"-20 UNC**  
**Qty 16**

**MB1199 - Assembly JLU Rear Highline Fenders****ASSEMBLY - STEP 1**

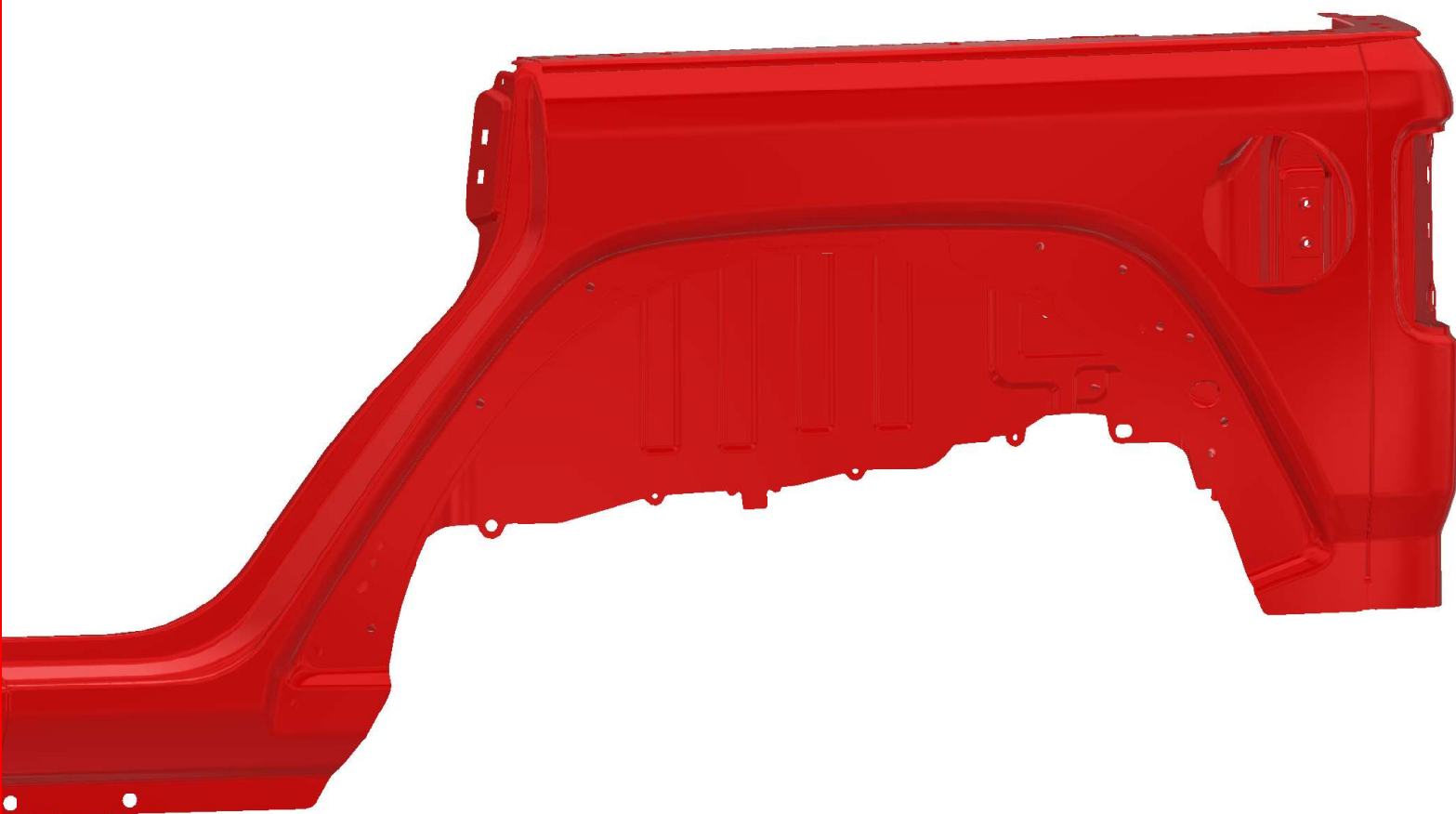
CLEAN WELDED FENDERS USING ACETONE

PAINT OR POWDER COAT WELDED FENDERS, AS DESIRED

REMOVE FACTORY OUTER FENDER FLARES, FACTORY INNER FENDER FLARES & ALL PLASTIC CLIPS.

CLEAN ALL SURFACES

APPLY MASKING TAPE TO ALL MOUNTING SURFACES



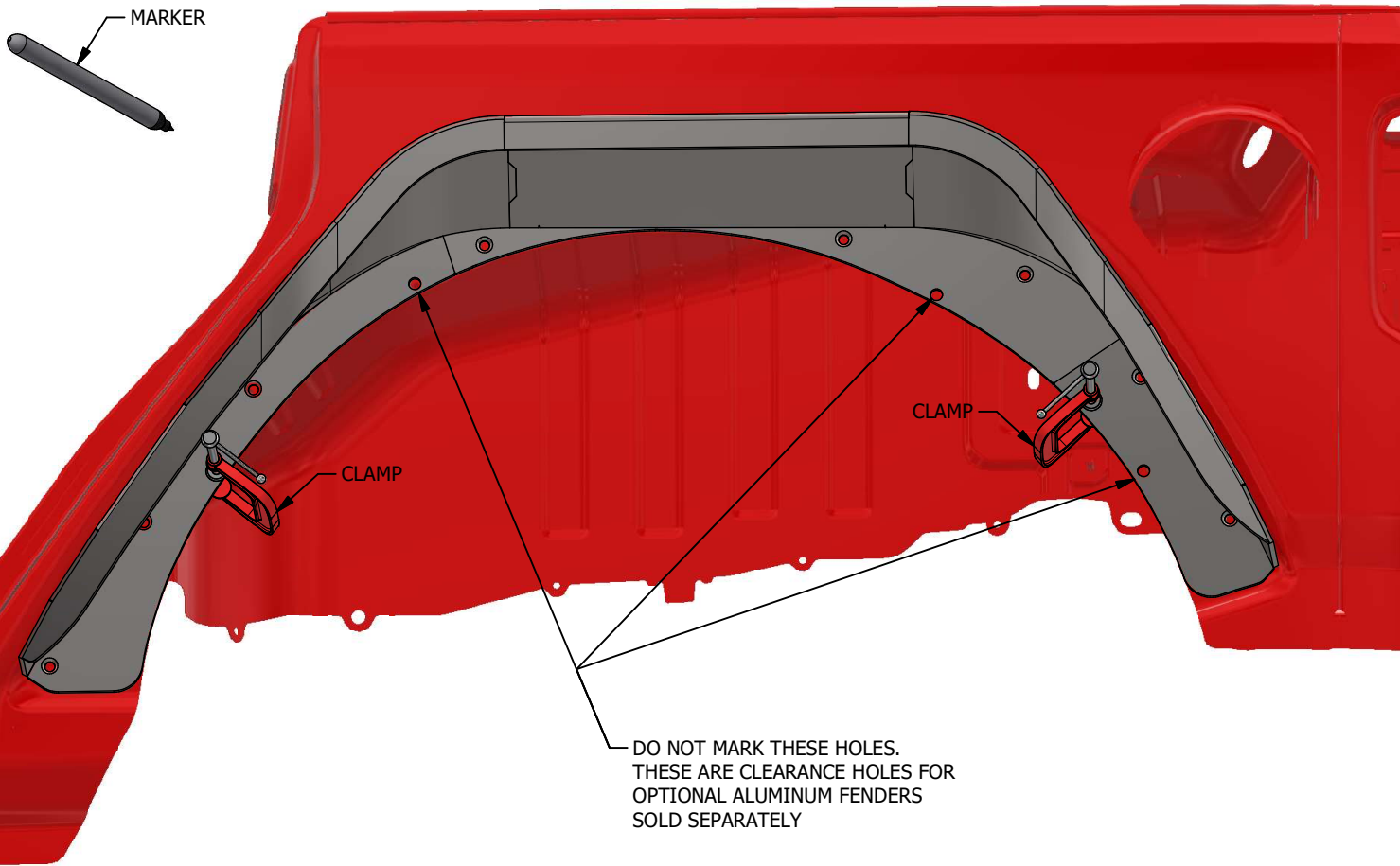
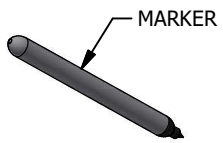
**MB1199 - Assembly JLU Rear Highline Fenders**

**ASSEMBLY - STEP 2**

POSITION MB1199 FENDER

CLAMP IN PLACE

MARK COUNTERSUNK HOLES

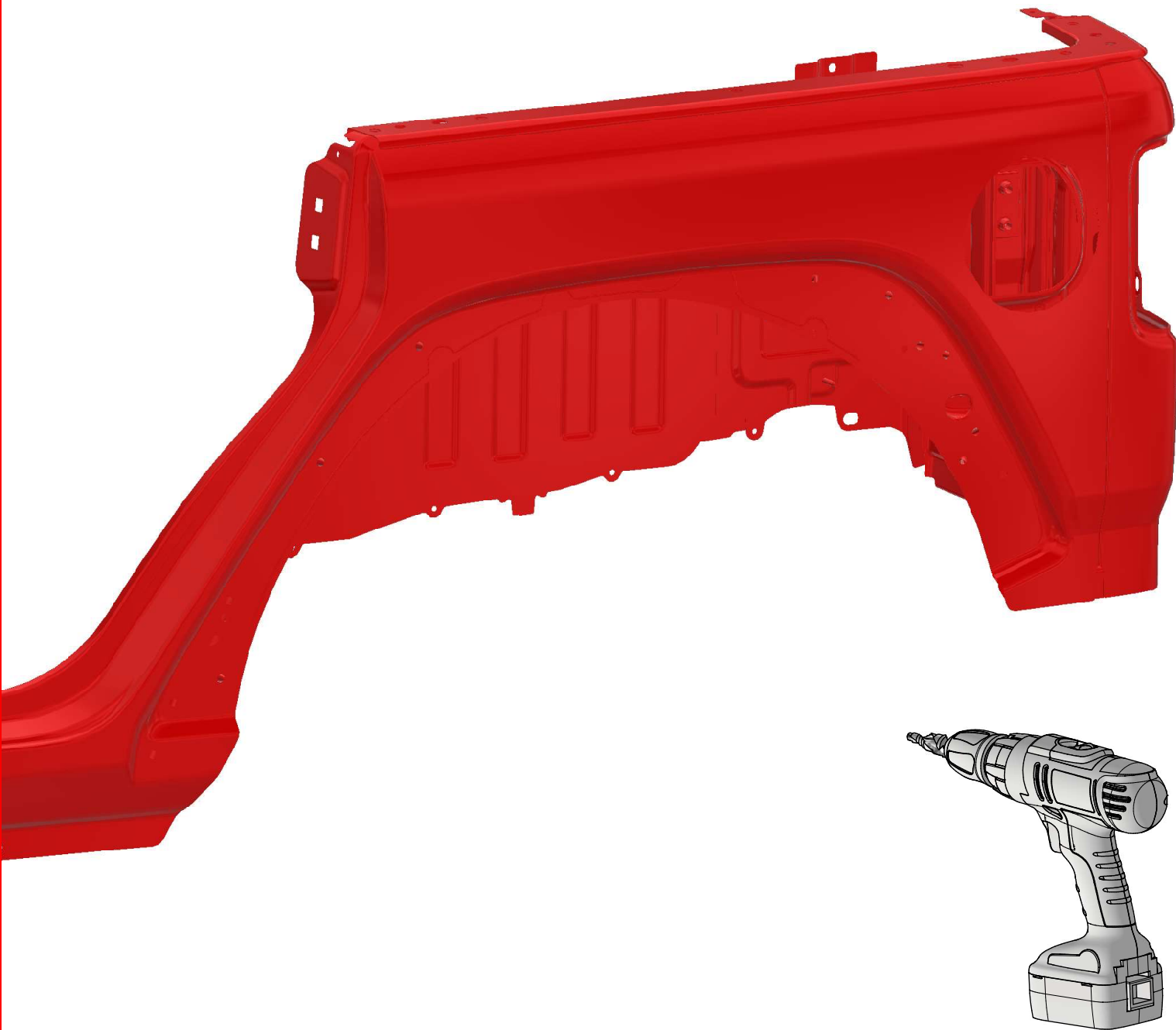


**MB1199 - Assembly JLU Rear Highline Fenders****ASSEMBLY - STEP 3**

REMOVE FENDER

DRILL HOLES FOR RIVNUTS USING A STEP DRILL BIT

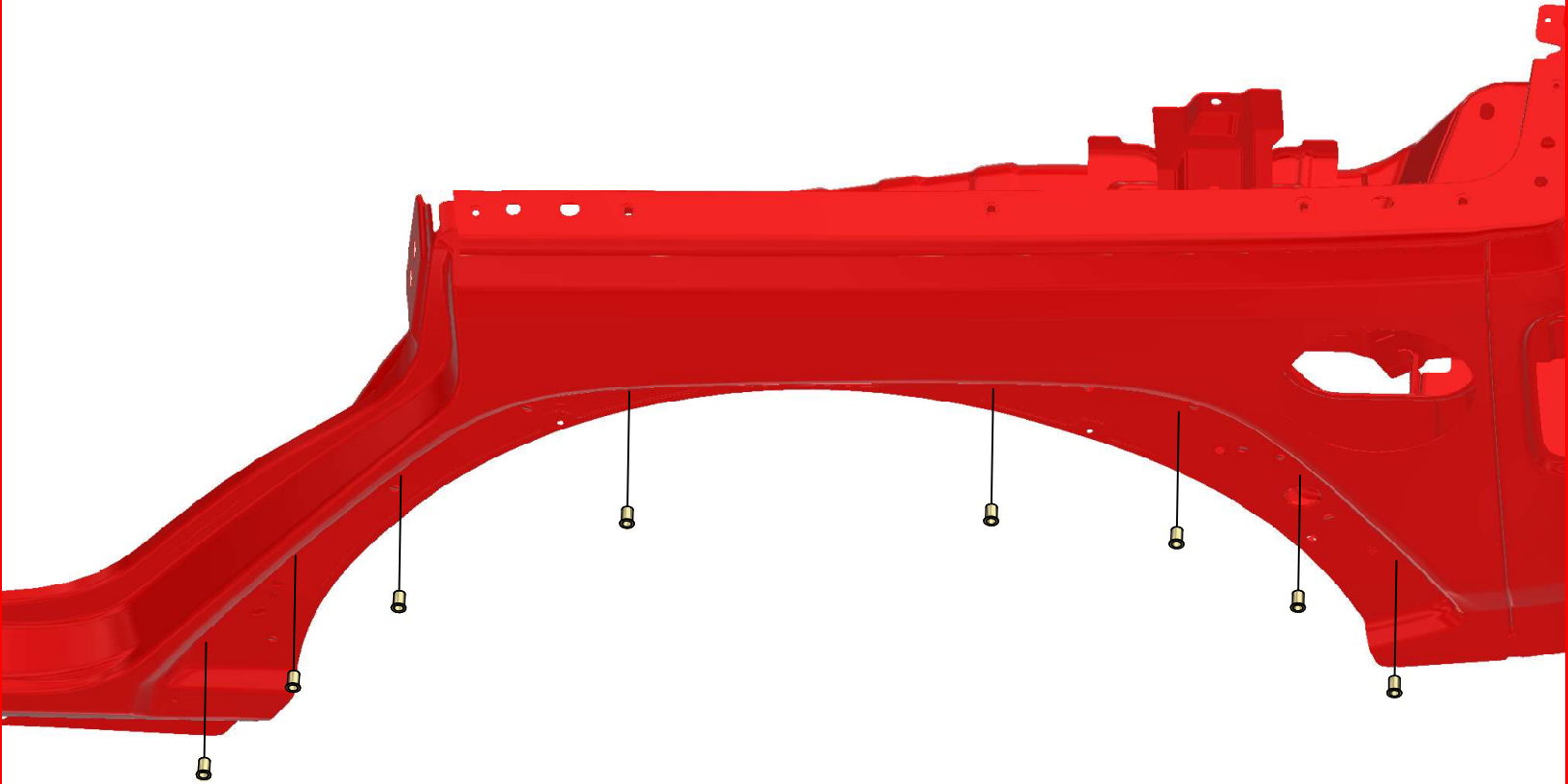
TEST RIVNUT FIT



**MB1199 - Assembly JLU Rear Highline Fenders**

**ASSEMBLY - STEP 4**

INSTALL RIVNUTS USING A RIVNUT INSTALLATION TOOL



**MB1199 - Assembly JLU Rear Highline Fenders**

**ASSEMBLY - STEP 5**

FASTEN FENDER TO BODY USING COUNTERSUNK SCREWS PROVIDED

