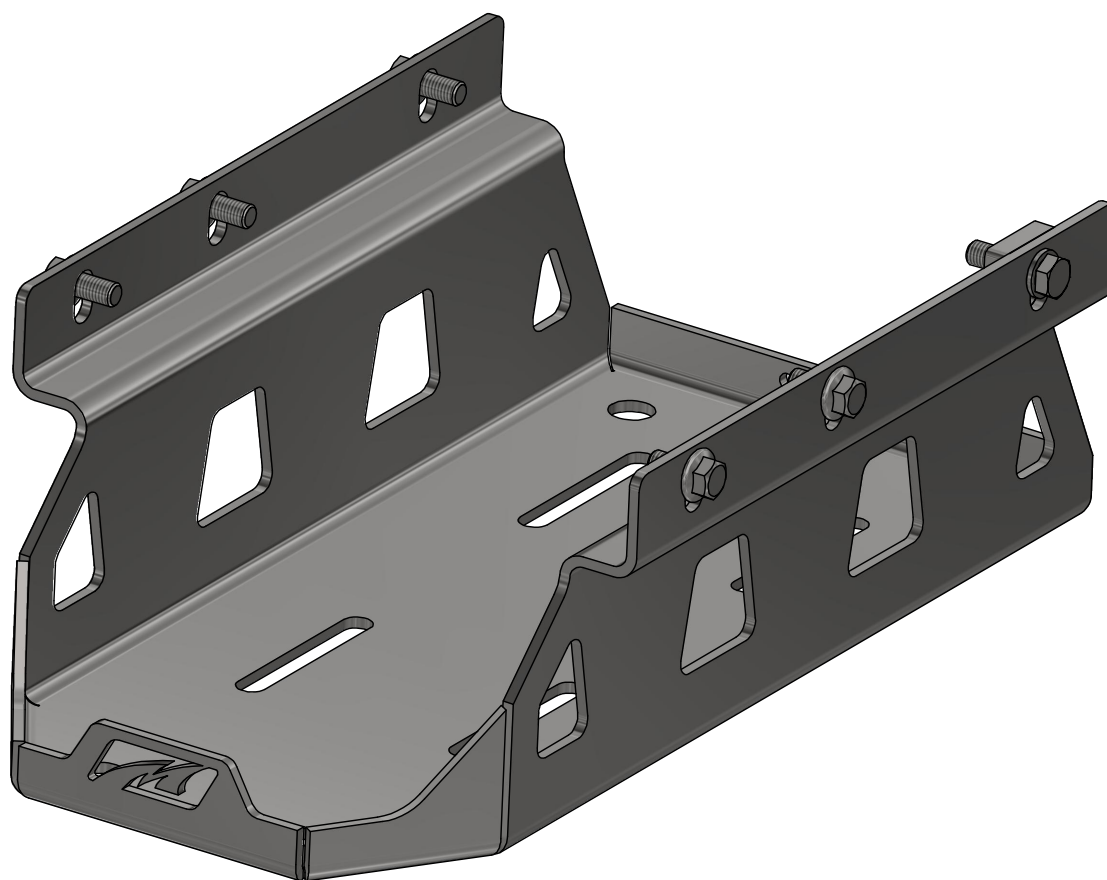
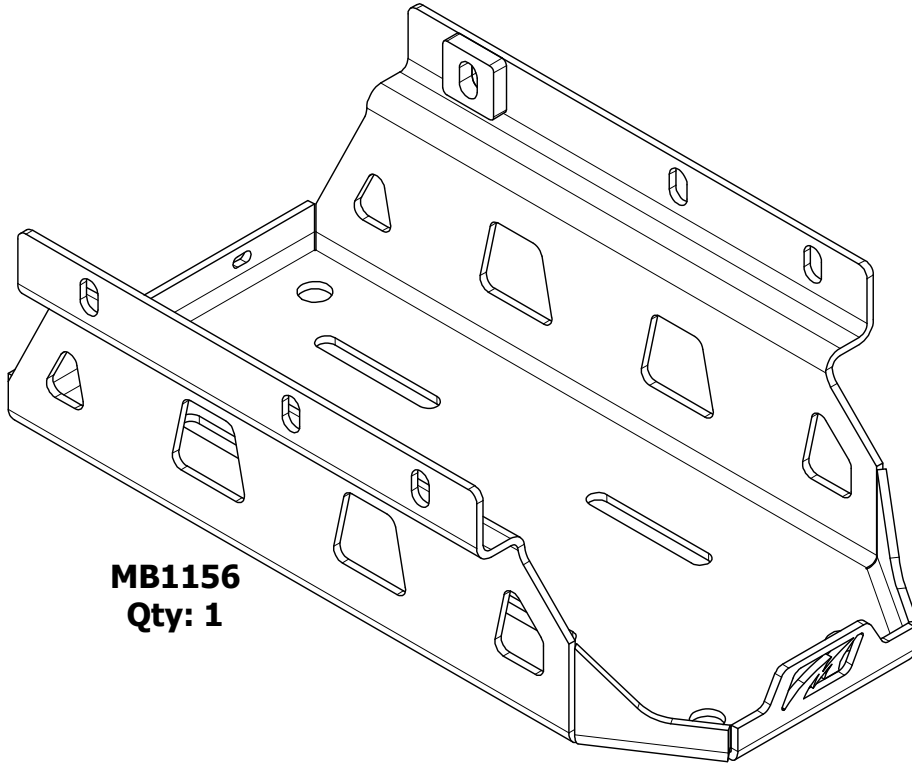


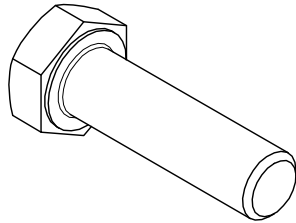
MB1156 - e-Torque Battery Skid



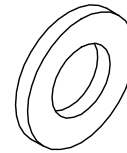
Installation Instructions

MB1156 - Installation Instructions e-Torque Battery Skid JL/JLU**KIT CONTENTS**

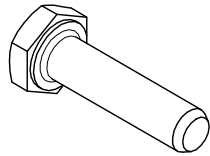
MB1156
Qty: 1



HEX HEAD BOLT
M10-1.5 x 35mm
Qty: 1



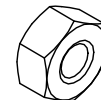
FLAT WASHER
M10
Qty: 1



HEX BOLT
1/4"-20 x 1" GR8
Qty: 2



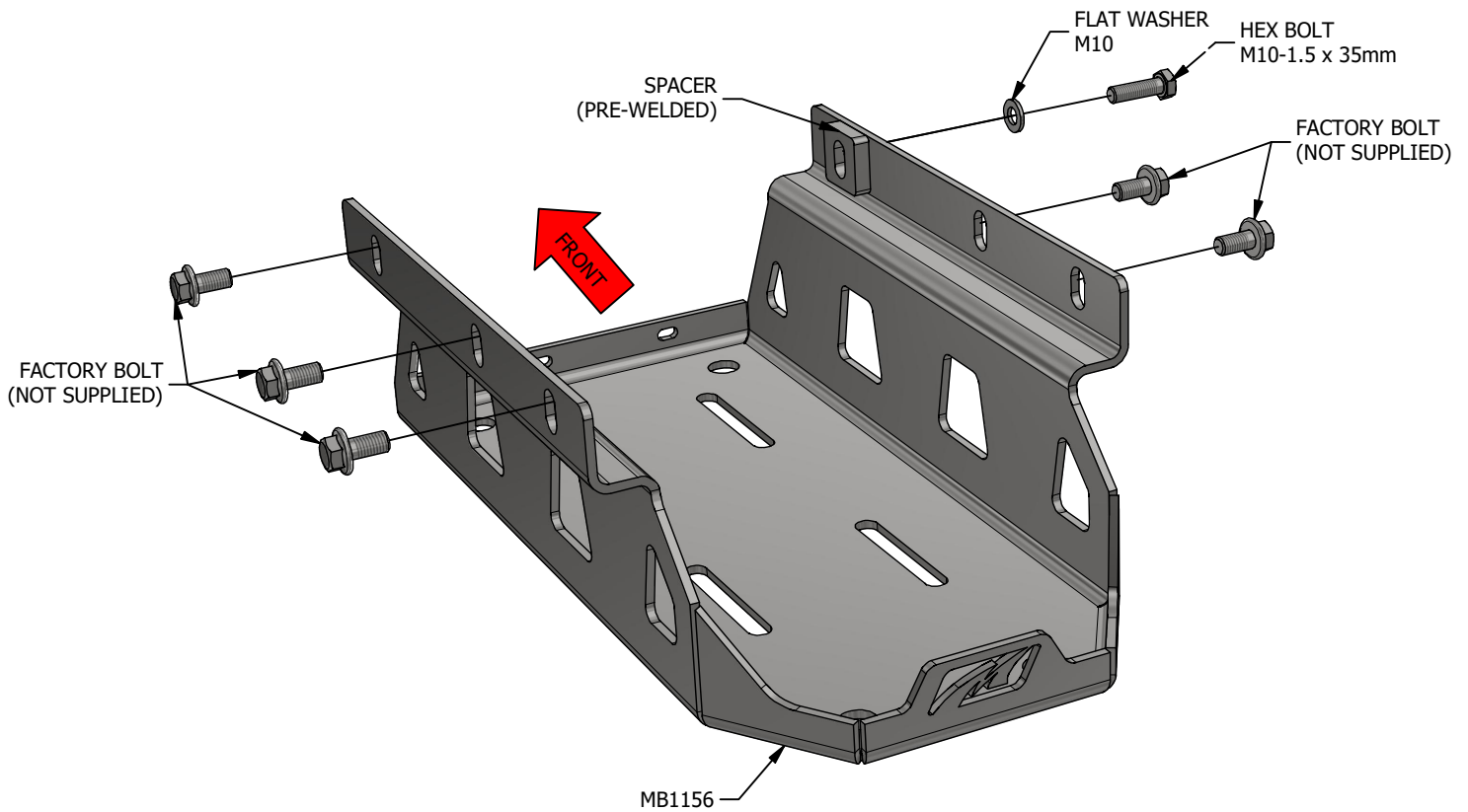
FLAT WASHER
1/4"
Qty: 4



NYLOCK NUT
1/4"-20
Qty: 2

MB1156 - Installation Instructions e-Torque Battery Skid JL/JLU

REMOVE THE FACTORY BATTERY SKID FROM THE JEEP BY REMOVING THE SIX (6) BOLTS HOLDING THE SKID PLATE TO THE LATERAL SUPPORTS. BOLT THE MOTOBILT e-TORQUE SKID PLATE INTO THE FACTORY LOCATION USING FIVE (5) BOLTS FROM THE FACTORY SKID PLATE AND ONE (1) M10-1.5 x 35mm BOLT AND WASHER THAT IS SUPPLIED WITH THE KIT.



MB1156 - Installation Instructions e-Torque Battery Skid JL/JLU

RE-INSTALL THE FACTORY BATTERY TERMINAL BRACKET TO THE OEM CROSS MEMBER AND MOTOBILT BATTERY SKID PLATE USING THE PROVIDED 1/4" HARDWARE.

