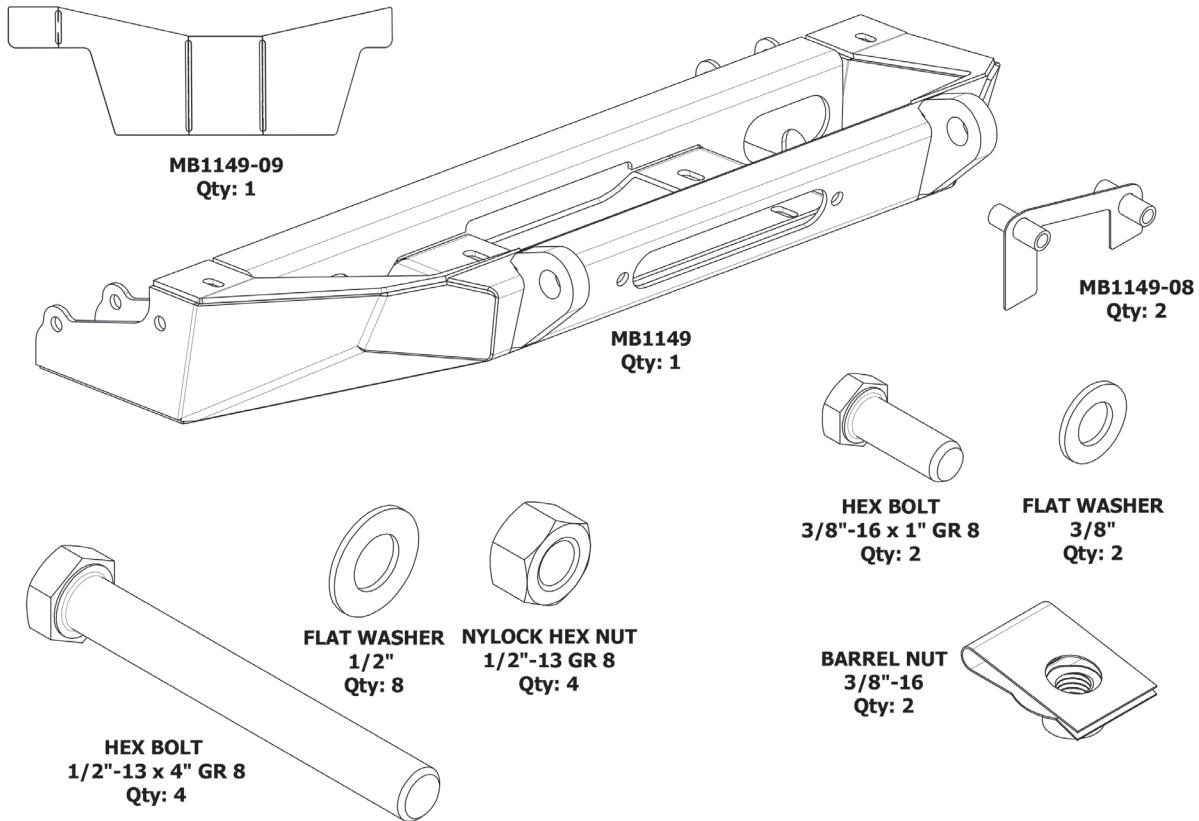


## MB1149 Tomahawk Frame Chop Bumper Installation



## MB1149 Tomahawk Frame Chop Bumper Installation

### All parts should be test fitted before paint or powder coating.

1. Place vehicle in park. Apply parking brake.
2. Disconnect negative terminal on battery.
3. Unplug the factory fog lights if equipped.
4. Unplug the sway bar disconnect harness from the sway bar if equipped.
5. Remove the factory bumper by removing the eight bolts fastening it to the frame horn flange.

- 6** Remove the front grill by removing the six plastic retainer clips from the top. Then removing the grill by pulling it from the bottom retainer clips. Disconnect the front signal lights when removing the grill **[JK ONLY]**.

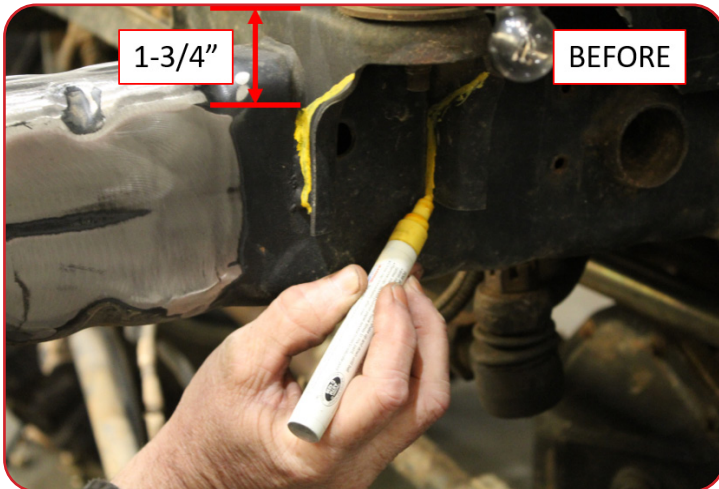


**MB1149 Tomahawk Frame Chop Bumper Installation****7**

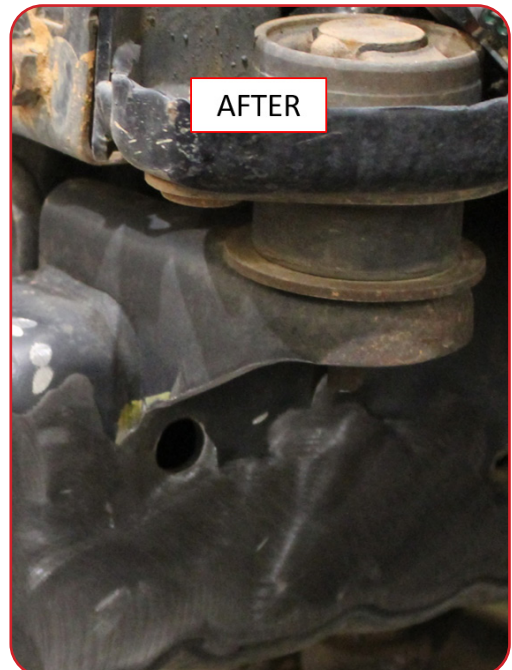
Unbolt the factory sway bar from the frame.

**NOTE:**

Factory Rubicon sway bar with electronic disconnect can NOT be used with this bumper. See compatibility on website.

**8**

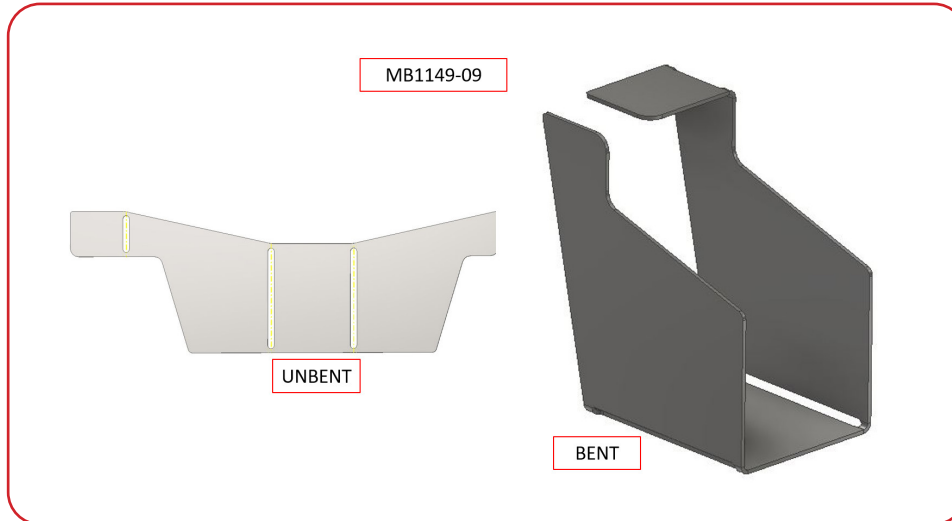
On the driver and passenger side, mark the body mount and trim 1-3/4" from the top of the mount and grind smooth to the frame.



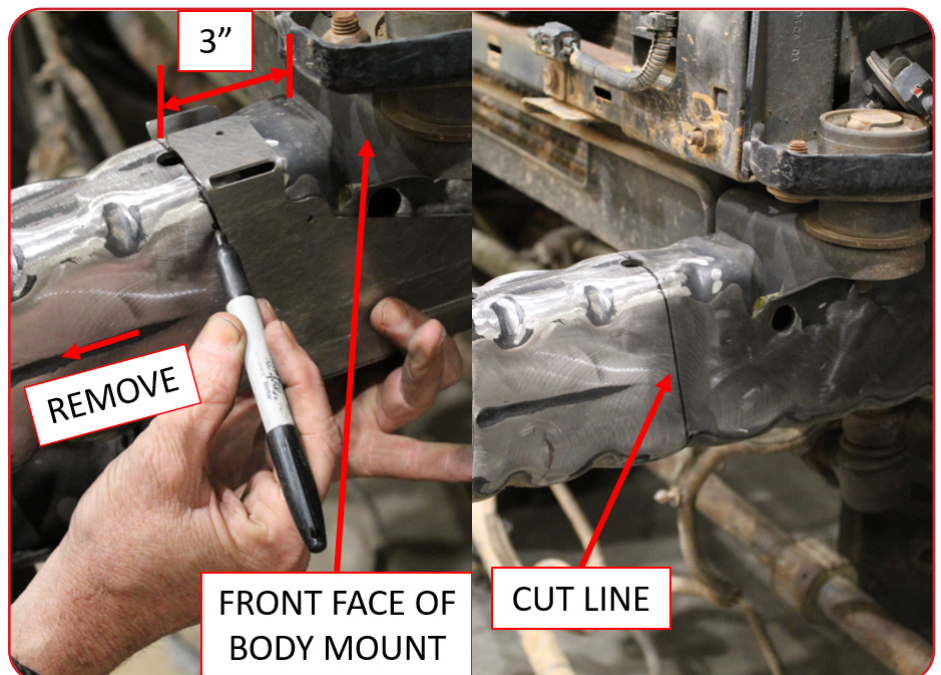


## MB1149 Tomahawk Frame Chop Bumper Installation

- 9** Bend the provided template MB1149-09 by hand so that it makes a box to sleeve around the frame.



- 10** Use the provided template to mark the frame. On the top of the frame, place the front edge of the template 3" from the front face of the body mount. From there, make a mark around the perimeter of the frame using the provided template as a guide.



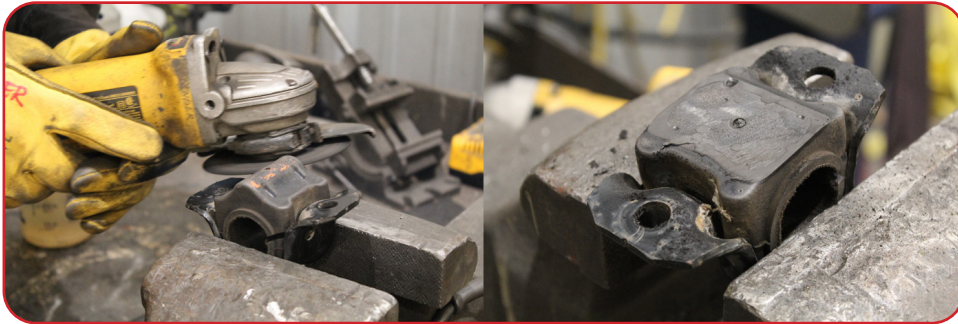
- 11** Cut the frame and grind down any sharp edges

**MB1149 Tomahawk Frame Chop Bumper Installation****12**

Marking the top bumper hole location.

**A: [JK/JKU ONLY]**

Position the MB1149 Tomahawk bumper onto the frame. Bolt the sway bar bolts back into place to locate the bumper on the frame. Now use the bumper as a template and mark the top hole on the passenger and driver side.

**12**

Marking the top bumper hole location.

**B: [JL/JLU / JT ONLY]**

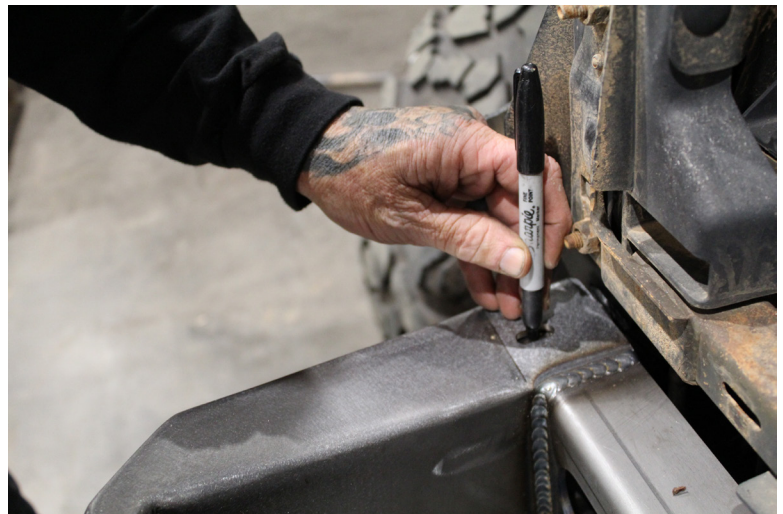
i. Cut the top of factory sway bar mount bushings so they are flat.

**12**

Marking the top bumper hole location.

**C: [JL/JLU / JT ONLY]**

ii. Mount the MB1149 Tomahawk bumper onto the frame. Bolt the sway bar back into place to locate the bumper on the frame. Make sure the sway bar has enough clearance to cycle with the suspension. Then mark the hole on the top of the frame.





**MB1149 Tomahawk Frame Chop Bumper Installation****13**

Remove the bumper and drill the top of the frame with a  $9/16$ " drill. Add the  $3/8$ " barrel nut to the top of the frame on each side and now the bumper can be reinstalled.

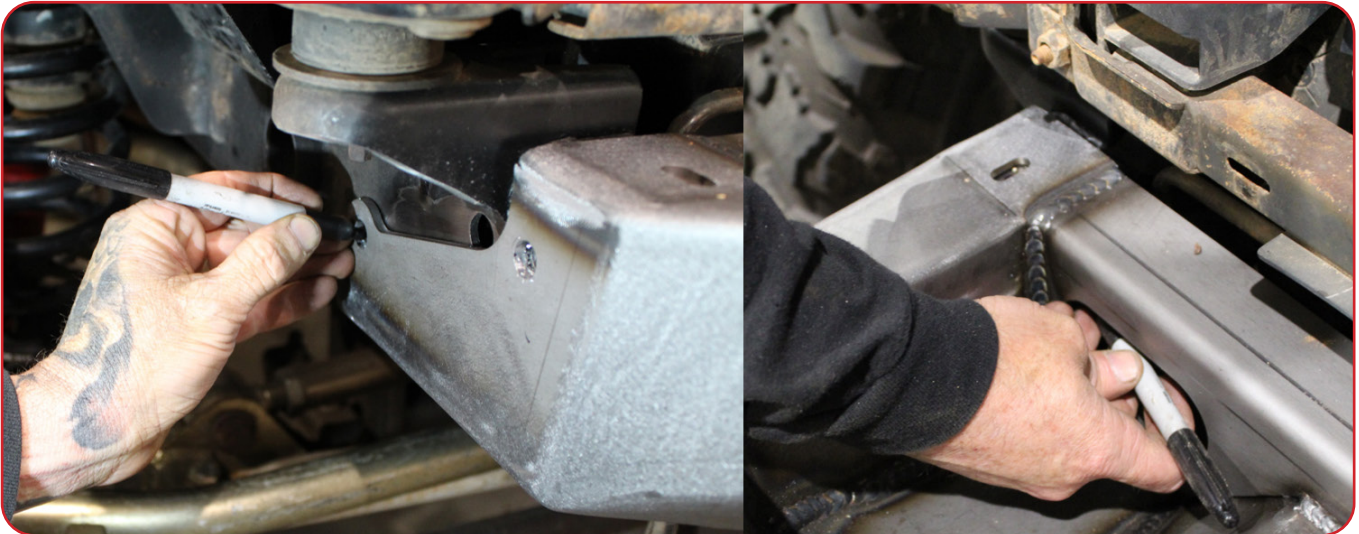
**14**

Position the bumper on the frame and insert the  $3/8$ "x 1" bolt into the  $3/8$ " barrel nut that was inserted into the frame.

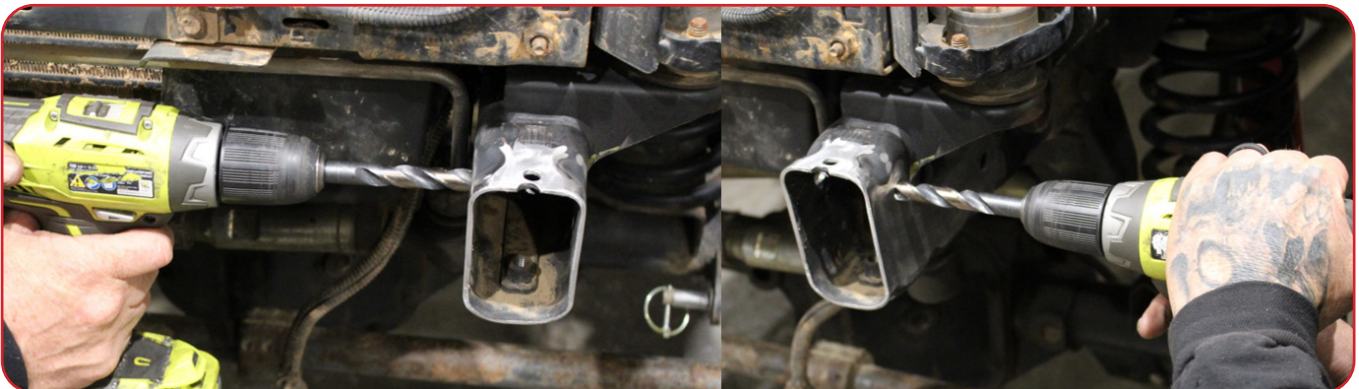
a. **[JK/JKU ONLY]** Reinstall the sway bar bolts through the bumper and into the frame

**MB1149 Tomahawk Frame Chop Bumper Installation****15**

Using the bumper as the template, mark the holes on the side of the bumper onto the frame. You will need to mark the holes on the outside of the frame, as well as, the inside of the frame. Eight marks in total.

**16**

Remove the bumper again and drill the eight holes that were marked in Step 15 with a 1/2" drill bit. When drilling the rear most hole on each side, take care to not drill through your radiator. Once all the holes are drilled, we recommend passing through each pair of holes to make sure the bolts will be able to pass through the frame.





**MB1149 Tomahawk Frame Chop Bumper Installation****17**

Paint or powder coat the frame and bumper to protect it from corrosion.

**18**

Install anti crush plate MB1149-08 into each of the ends of the open frame tube and align the ends of the DOM tube with the holes drilled into the frame

**19**

Install the bumper. Install the two 3/8" x 1" fasteners into the top of the frame, the four 1/2" x 4" bolts and 1/2" Nylock Nuts with washers through the side of the frame. Torque to the minimum recommended torque specs in the chart provided on the following page.





## MB1149 Tomahawk Frame Chop Bumper Installation

20

Remount the sway bar and tighten the bolts to the minimum recommended torque spec (see chart provided on the following page).



**Jeep JL/JLU/JT Gladiator Swaybar Compatibility:**

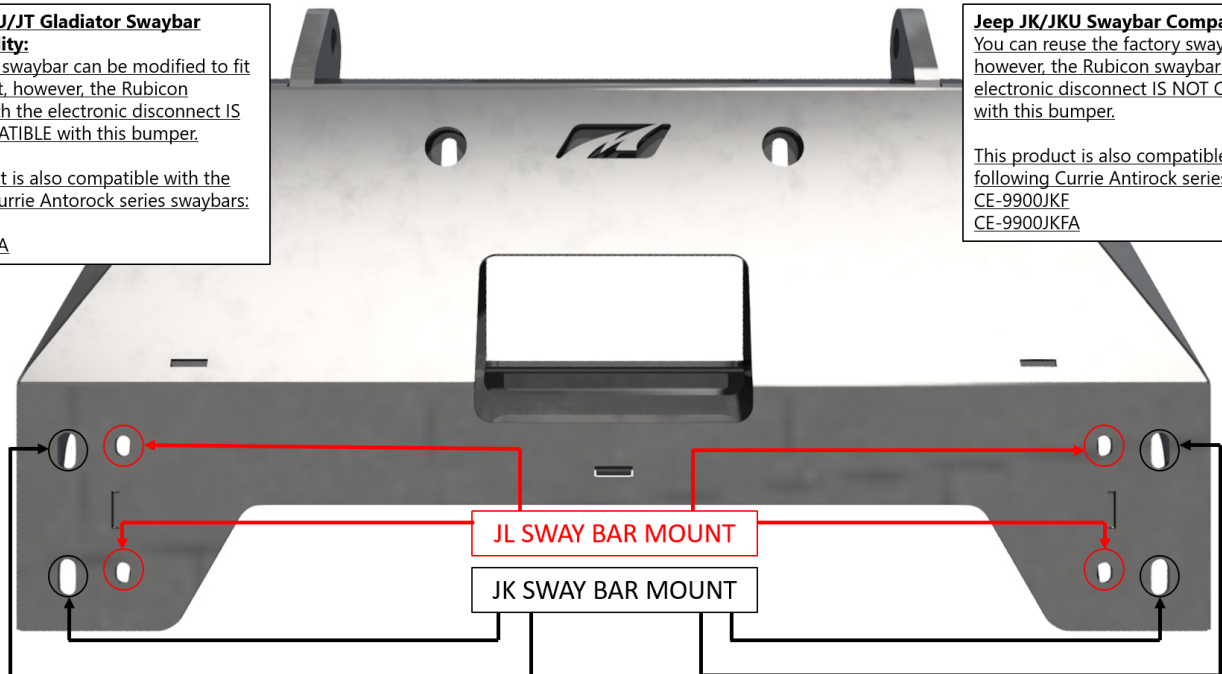
The factory swaybar can be modified to fit this product, however, the Rubicon swaybar with the electronic disconnect IS NOT COMPATIBLE with this bumper.

This product is also compatible with the following Currie Antirock series swaybars:  
CE-9900JLF  
CE-9900JLFA

**Jeep JK/JKU Swaybar Compatibility:**

You can reuse the factory swaybar, however, the Rubicon swaybar with the electronic disconnect IS NOT COMPATIBLE with this bumper.

This product is also compatible with the following Currie Antirock series swaybars:  
CE-9900JKF  
CE-9900JKFA



## MB1149 Tomahawk Frame Chop Bumper Installation

Minimum Recommended Torque (Course Thread)		
Bolt Size	Torque lb-ft	
	Grade 5	Grade 8
1/4"	6.3	9
5/16"	13	18
3/8"	23	33
7/16"	37	52
1/2"	57	80
9/16"	82	115
5/8"	112	159
3/4"	200	282

Minimum Recommended Torque (Course Thread)			
Bolt Size	Torque N•m (lb-ft)		
	8.8	10.9	12.9
M6	11 (8.5)	17 (12)	19 (14.5)
M8	28 (20)	40 (30)	47 (35)
M10	55 (40)	80 (60)	95 (70)
M12	95 (70)	140 (105)	165 (120)
M14	150 (110)	225 (165)	260 (190)
M16	240 (175)	350 (225)	400 (300)
M18	330 (250)	475 (350)	560 (410)
M20	475 (350)	675 (500)	800 (580)

