

MB1125 Body Armor for Jeep JK/JKU

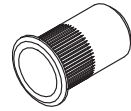
**MB1125-B
PASSENGER
Qty 1**



**MB1125-A
DRIVER
Qty 1**



**FLAT HEAD SOCKET CAP SCREW
1/4"-20 x 3/4" STAINLESS
Qty 34**



**RIVNUT
1/4"-20
Qty 34**

MB1125 Body Armor for Jeep JK/JKU

Instructions Jeep JKU 4 Door from 2007-2018

We recommend to NOT paint or powder coat your new Motobilt Body armor until AFTER you have fitted & installed as per these instructions. In order to properly fit your new body armor to the vehicle, it will be placed on & off of the vehicle multiple times throughout the installation process. Fitting the body armor while it is unfinished will ensure you will not chip or damage any paint or powder coating throughout the initial installation process.

This body armor is designed to fit many styles of standard grommet style 4" round tail lights. If using LED tail lights, you will need resistors to make the LED lights to function properly.

This body armor deletes the factory license plate mount.

- 1** Clean exterior rear quarter panels & exterior of rear corners.
- 2** Disconnect negative battery terminal.
- 3** Remove factory license plate mount.
- 4** Using a #2 Phillips screwdriver, remove the two innermost screws on each tail light. Note: You do not need to remove the two outermost screws. Remove the tail light assembly from the body. Repeat on passenger side.



- 5** Disconnect the tail lights from the factory wiring harness.

MB1125 Body Armor for Jeep JK/JKU

- 6** Remove gas cap. Remove fuel filler bezel. There are four (4) plastic retainers on the inside that need to be pressed inwards to remove the fuel filler bezel from the body. You can access these plastic retainers with your hands once the driver side rear tail light is removed.



- 7** Using pliers, remove the screw spring clips from the body.

MB1125 Body Armor for Jeep JK/JKU

- 8** Mark the raised portions of the body where indicated. Repeat on passenger side.



- 9** Using a grinder with a sanding disc (or similar), carefully sand down the marked raised areas until they are flush with the surrounding body areas. Driver side shown. Repeat on passenger side.



MB1125 Body Armor for Jeep JK/JKU

- 10** Place masking tape over all sheet metal on rear quarter panels, as shown.



- 11** Place the driver side body armor on vehicle & clamp in multiple places. Align the top edge of the body armor with the top body line of the sheet metal.

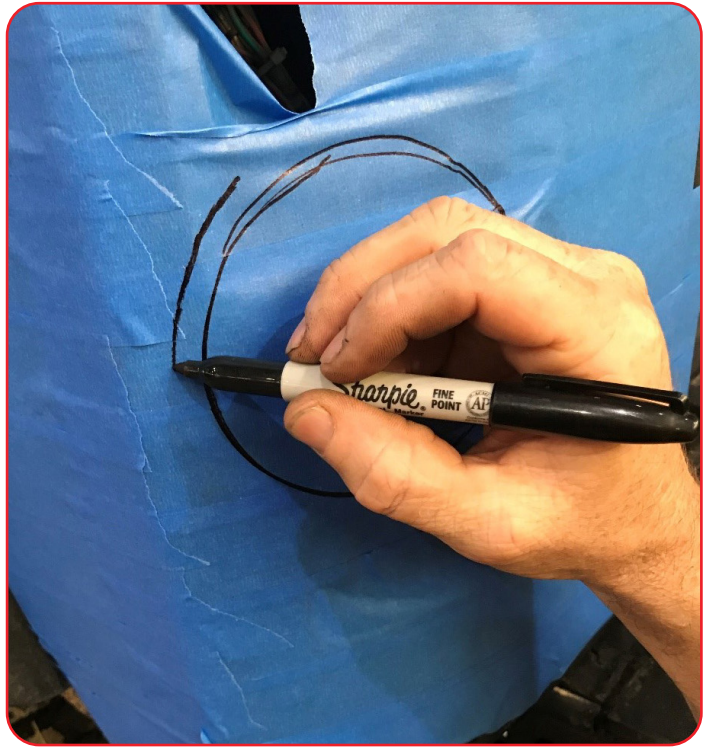
- 12** Using the body armor as a template, make marks for the tail light openings.



MB1125 Body Armor for Jeep JK/JKU

13 Unclamp & remove body armor from driver side.

14 Draw offset lines outside of your marks to approximately ½" larger all around. This will ensure you have ample clearance for your new round tail lights.



15 Use a "body" saw (or other tool) to cut & remove sheet metal along your outermost offset lines.



MB1125 Body Armor for Jeep JK/JKU

- 16** Remove all sharp edges after cutting sheet metal.



- 17** Position, clamp & align the body armor.



- 18** Using the countersunk holes in the body armor as a template, drill a 9/32" hole in the top right & bottom right holes ONLY, as shown.



MB1125 Body Armor for Jeep JK/JKU

- 19** Unclamp & remove the body armor. NOTE the two drill holes.



- 20** Drill out your first two holes to a larger diameter using a 13/32" drill bit.

- 21** Using a rivnut or nutsert tool, install a 1/4"-20 rivnut into the top left & into the bottom left holes. Ensure the rivnut is fully seated & will not turn.

NOTE

The installation of these first two rivnuts on the upper & lower corners will ensure a tight fit up of the material during drilling & fitting of steps later in these instructions.

MB1125 Body Armor for Jeep JK/JKU

22 Before proceeding any further on the Driver Side, repeat similar steps on passenger side. Photos for reference.



MB1125 Body Armor for Jeep JK/JKU



- 23** Position the body armor & loosely install a 1/4"-20 countersunk screw through the body armor & into the top right rivnut.



MB1125 Body Armor for Jeep JK/JKU

- 24** Then loosely install a 1/4"-20 countersunk screw through the body armor into the bottom right hole.

- 25** Align the front portion of the body armor, located behind the rear door, with the top body line of the sheet metal & clamp in place.



- 26** Check the gaps & reveal around the rear fender to ensure they are equal & consistent. Reposition slightly, if necessary.

MB1125 Body Armor for Jeep JK/JKU

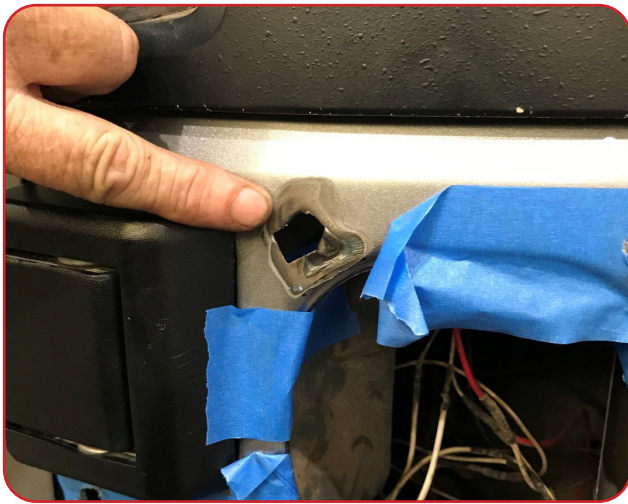
- 27** Using the countersunk holes in the body armor as a template, drill all remaining holes using a 9/32" drill bit.



MB1125 Body Armor for Jeep JK/JKU

28 Remove body armor from vehicle.

29 Drill all remaining holes in body to 13/32" diameter.

**NOTE**

30 An area of sheet metal in the top left passenger side that was ground down flush to the body in STEP #9 will NOT allow you to install a rivnut, as there is not enough sheet metal remaining. You will be using a washer & nylock behind this area later.

31 Install 1/4"-20 rivnuts into all remaining holes.



MB1125 Body Armor for Jeep JK/JKU

- 32** Have a helper hold body armor on vehicle while you loosely place a 1/4"-20 countersunk screw in the top right hole **ONLY**, similar to STEP #23



- 33** Loosely place a 1/4"-20 countersunk screw in the forwardmost upper rivnut on the side quarter panel.
- 34** Tighten both countersunk screws.
- 35** Loosely install all remaining countersunk screws **BY HAND**.

- 36** If you encounter a screw that will not easily thread into a rivnut **BY HAND**, then use a 1/4"-20 tap to chase the threads of the rivnut.

NOTE

It is easy to cross thread a rivnut during this stage.



MB1125 Body Armor for Jeep JK/JKU

- 37** Once all remaining screws are loosely installed by hand, begin tightening each of the screws **BY HAND**. Do **NOT** overtighten.



- 38** With passenger side body armor installed, repeat on driver side.



- 39** Connect the wiring pigtail of your 4" round tail light (not included) into the appropriate corresponding "Stop/Tail/Turn" circuits.



MB1125 Body Armor for Jeep JK/JKU

- 40** Connect negative terminal to battery.
- 41** Test tail light function including brakes.
- 42** Install grommets to tail lights
- 43** Install tail light with grommet into the opening of the body armor.
- 44** Disassemble all body armor & paint as desired.
- 45** During final assembly after paint, we recommend to use anti-seize compound on the threads of all screws. Do NOT over tighten screws during final assembly

