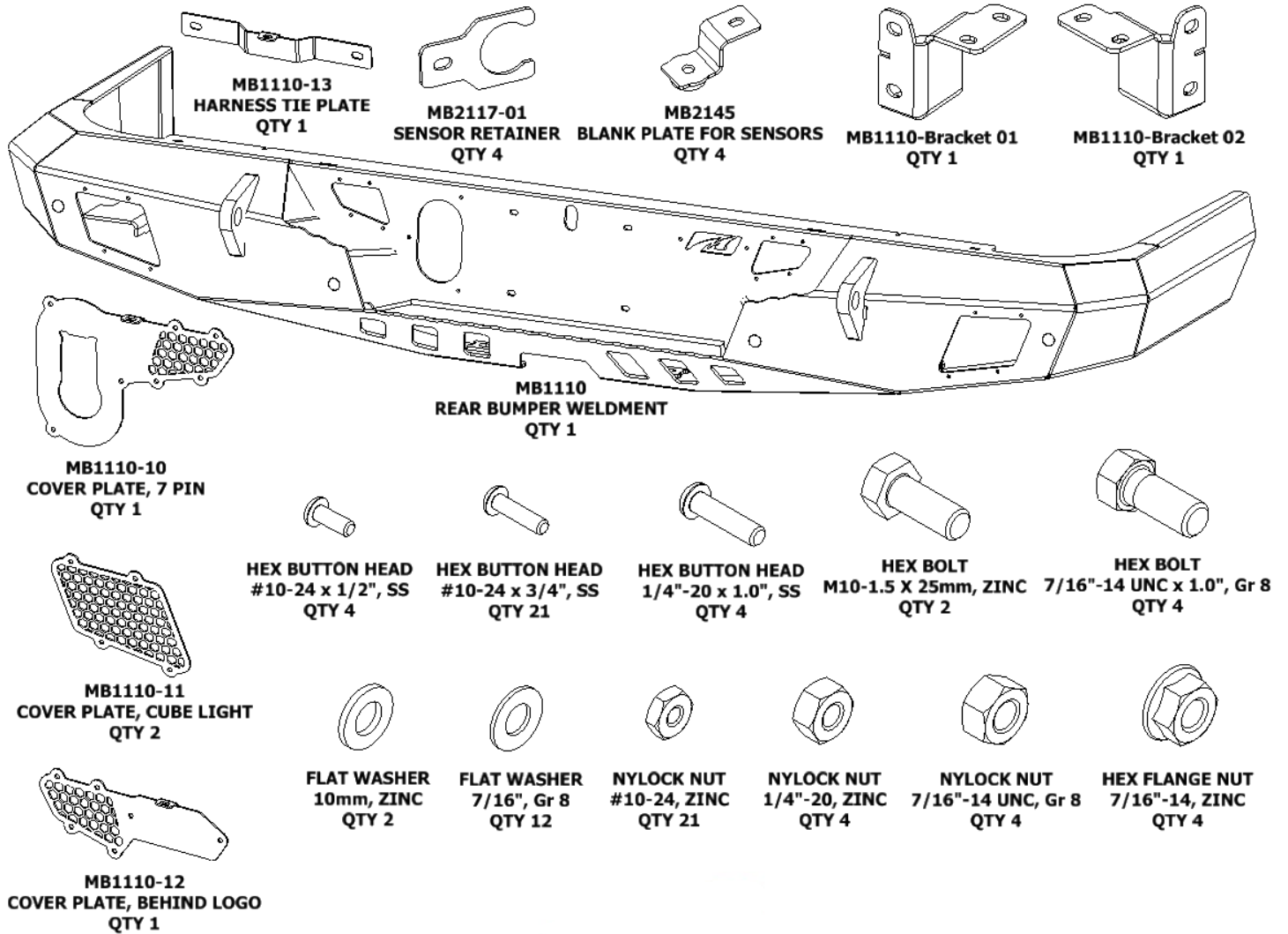


MB1110 JT Gladiator Crusher Rear Bumper Contents



MB1110 JT Gladiator Crusher Rear Bumper – Installation Instructions**NOTE:**

Please read through all instructions prior to installation. Some factory hardware is reused for this installation. If your vehicle is NOT equipped with the optional rear rock rails located behind the rear tires, then you will require our MB1111 Rear Corner Supports (sold separately) prior to your installation.

- 1** Paint or powder coat all Motobilt parts to your desired colors.
- 2** Place vehicle in park. Apply park brake.
- 3** Disconnect negative terminal on battery.

- 4** Lower & remove spare tire.



- 5** Disconnect rear bumper wiring harness at two (2) locations. Move the red tab outwards then press on the connector to disconnect.

MB1110 JT Gladiator Crusher Rear Bumper – Installation Instructions

- 6** Disconnect trailer 7 pin connector from inside the bumper.



- 7** Using a T-50 Torx socket, remove two (2) M10 bolts located on the underside of the hitch cross frame member.

- 8** Using a flat screwdriver, remove the license plate.



MB1110 JT Gladiator Crusher Rear Bumper – Installation Instructions

- 9** Using a 15mm socket, remove two (2) bolts located behind the license plate.

**OPTIONAL REAR ROCK RAILS:**

- 10** If your vehicle is equipped with the optional rear rock rails located behind rear tires, you may reuse the mounting brackets holding the rock rails to the frame. Remove only the rock rails from the mounting bracket, keeping the mounting bracket attached to the frame (each side).
- 11** Using a 15mm socket, remove three (3) bolts from the underside of the rock rail.



- 12** Using a 15mm socket, remove two (2) nuts that fasten the rock rail to the bumper.

- 13** Repeat Steps #11 & #12 on opposite side.

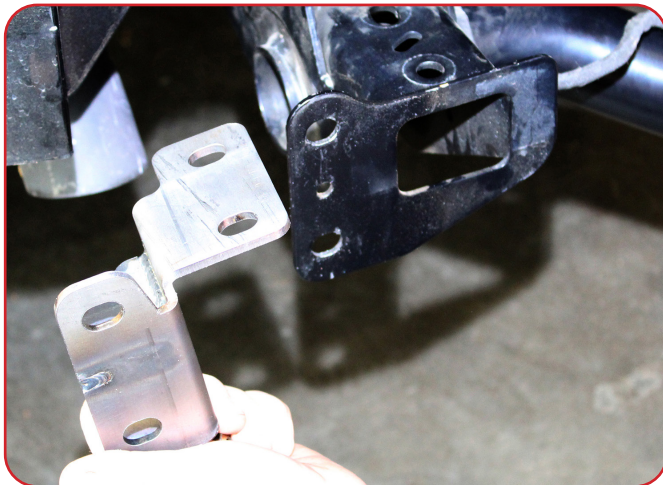
MB1110 JT Gladiator Crusher Rear Bumper – Installation Instructions

- 14** Loosen the bolts holding the rock rail mounting brackets. Do not remove the bolts.
- 15** If your vehicle is NOT equipped with the optional rear rock rails, you will need the MB1111 Gladiator Rear Corner Supports to complete your installation.
- 16** Using a 16mm socket, remove the four (4) flange nuts from behind frame mounting plates.



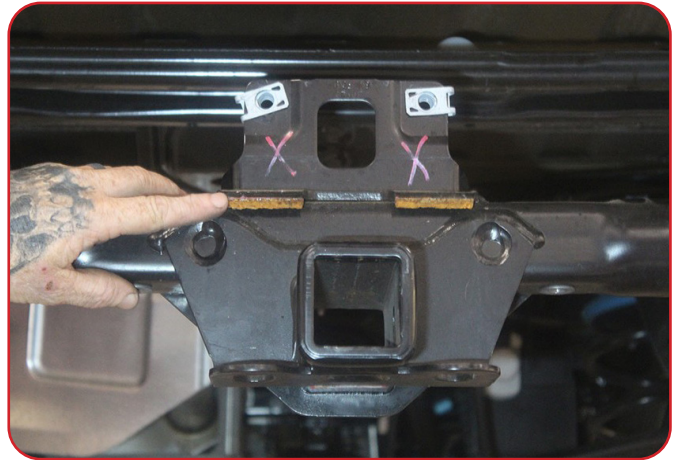
- 17** With all fasteners removed & wiring disconnected, remove the factory rear bumper from the vehicle.
- 18** If your vehicle is equipped with optional rear tow hooks, remove these tow hooks now.

- 19** Install MB1110-Bracket 01 on driver side frame as shown. Use two (2) hex bolts 7/16" - 14 UNC x 1.0", four (4) flat washers 7/16" and two (2) Nylock nuts 7/16" - 14 UNC per side. Repeat on passenger side with MB1110-Bracket 02



MB1110 JT Gladiator Crusher Rear Bumper – Installation Instructions

- 20** Using a cut off wheel, remove a small portion of metal above the factory receiver hitch (as shown removed). Apply paint to cut edges of bare metal if desired.



- 21** Place the factory bumper face down with the wiring harness facing up.

- 22** Label the positions of all connections & park sensors (if equipped). Example: Park Sensor – Outer Driver, Park Sensor – Middle Driver, Park Sensor – Outer Passenger, Park Sensor – Middle Passenger, Connector – Driver, Connector – Passenger, License Plate Light – Driver, License Plate Light – Passenger. The wiring connectors that connect the bumper wiring harness the vehicle's main wiring harness on the driver side are a different shape than the wiring connectors on the passenger side. Labelling them now will ensure you position the bumper wiring harness correctly into your new Motobilt bumper. Also, the positions of the park sensors (if equipped) must be placed back into their relative positions in the new bumper.

- 23** Disconnect the four (4) park sensors (if equipped) by opening the plastic bezels slightly with a screwdriver to remove them.



MB1110 JT Gladiator Crusher Rear Bumper – Installation Instructions

- 24** Remove the factory rear bumper wiring harness from the factory bumper.

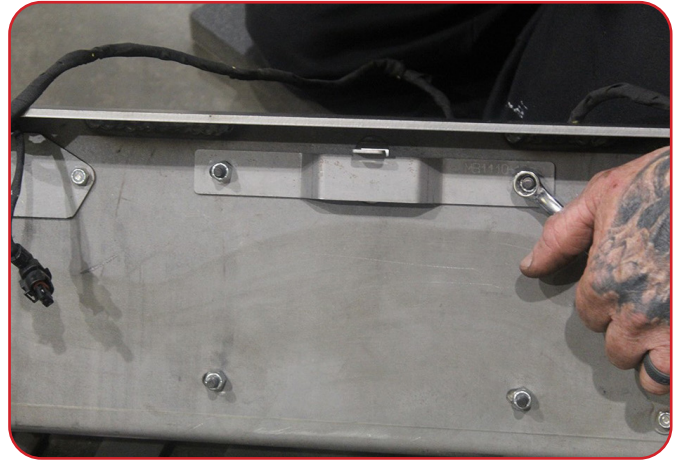


- 25** Install Covers MB1110-10, MB1110-11 & MB1110-12 with the supplied Hex Button Screws #10-24 x 3/4" long & #10-24 Nylock Nuts. Use a 1/8" hex bit & 3/8" wrench.



MB1110 JT Gladiator Crusher Rear Bumper – Installation Instructions

- 26** Install MB1110-13 (Harness Tie Plate) with tab facing up using ¼" x 1.0" L Hex Button Screw & ¼" Nylock Nut. Install license plate & tag light during this same time.



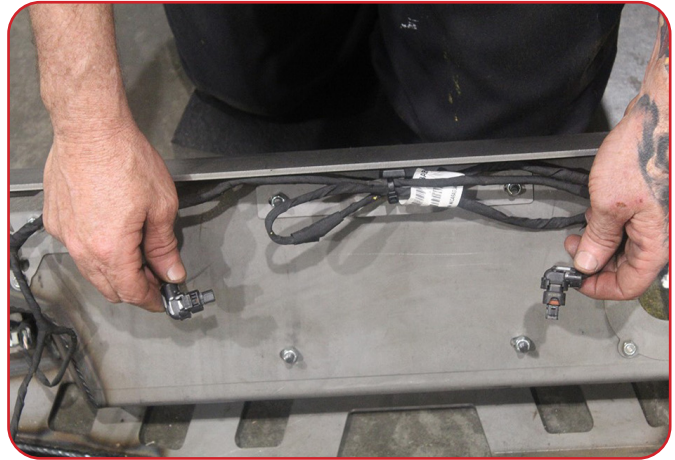
- 27** If equipped, install park sensors by placing the sensor in the hole then position MB2117-01 Sensor Retainer plate over the back side of the park sensor. Fasten using #10-24 x ½" long Hex Button Screw (4 places total)

- 28** Route the wiring from the factory bumper wiring harness near the underside of the top inside edge of the bumper. Use our integrated zip tie mounts to neatly secure your wiring.



MB1110 JT Gladiator Crusher Rear Bumper – Installation Instructions

- 29** If adding a light over your license plate/tag, then splice into one of the two factory light connectors shown.



- 30** With the bumper assembled & wiring in place, grab an assistant to help you lift the bumper by supporting each end & align the four (4) threaded studs with the mating plates in the rear frame. Loosely fasten using four (4) 7/16" Flat Washers & four (4) 7/16" Hex Flange Nuts. **Do NOT** tighten nuts yet.

- 31** Loosely install four (4) 7/16" x 1.0" Hex Bolts (two each side) to mate the underside corners of the bumper with the Frame Rail Brackets. Use two (2) 7/16" flat washers & a 7/16" Nylock Nut for each bolt. **Do NOT** tighten yet.



MB1110 JT Gladiator Crusher Rear Bumper – Installation Instructions

- 32** Loosely install two (2) M10 x 25mm Hex Bolts & flat washers to the hitch cross frame member underside where shown. Do NOT tighten yet.



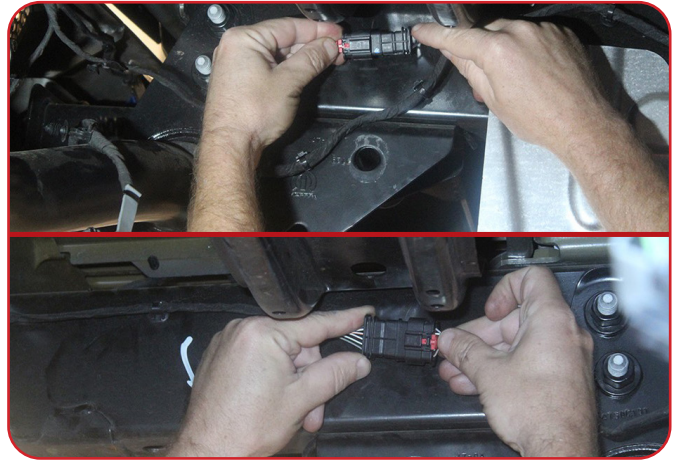
- 33** With all fasteners loosely installed, **measure the gaps on each side between the body & the bumper.** Adjust left or right as needed. Tighten all fasteners including the Frame Rail Brackets.

- 34** If installing cube lights (optional), bolt them into place using the built-in cube light mounts. Wire each light to a 12 volt source & switch.



MB1110 JT Gladiator Crusher Rear Bumper – Installation Instructions

- 35** Connect the bumper wiring harness to the main chassis wiring harness in two (2) locations



- 36** Connect the trailer 7 pin wiring connector.

- 37** Check all lights & park sensors for proper operation.

- 38** Check & tighten all fasteners after 50 miles then every 500 miles thereafter.

