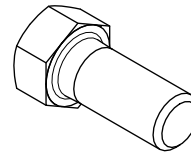
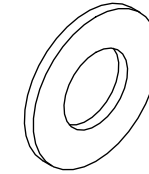


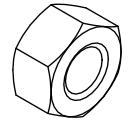
#MB1089 - JL TIRE CARRIER BODY
QTY 1



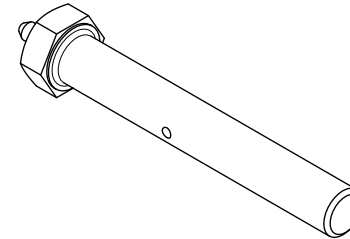
HEX BOLT
7/16" x 1" GR 8
QTY 9



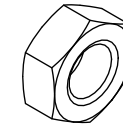
FLAT WASHER 7/16"
QTY 9



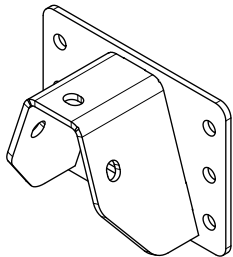
NYLOCK NUT
7/16"
QTY 9



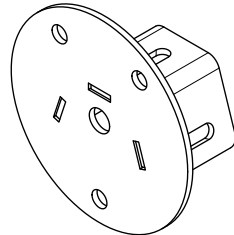
HINGE PIVOT BOLT
1/2" x 4" LG
QTY 2



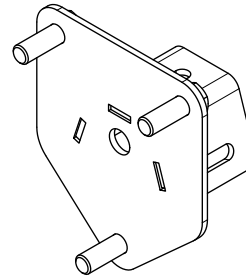
HINGE PIVOT NUT
1/2" NYLOCK JAM NUT
QTY 2



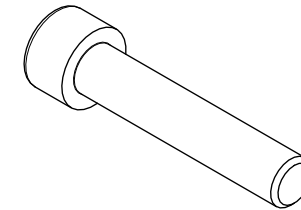
#MB1089 - JL TIRE HEIGHT BRACKET
QTY 1



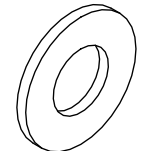
#MB1089 - JL TIRE MOUNT BRACKET
QTY 1



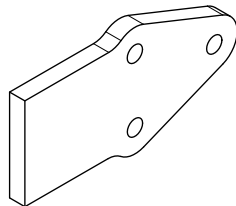
#MB1089 - JL 8 LUG TIRE MOUNT BRACKET
(OPTIONAL REPLACEMENT FOR #MB1089)



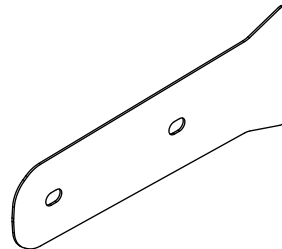
SOCKET HEAD CAP SCREW BLACK OXIDE
M10 x 1.5 x 50 mm
QTY 4



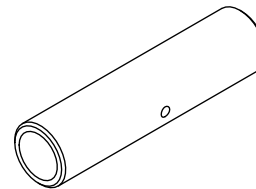
FLAT WASHER
3/8"
QTY 4



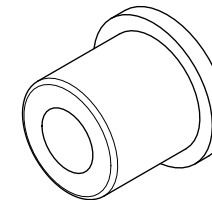
#MB1089 - JL TAILGATE HINGE
QTY 2



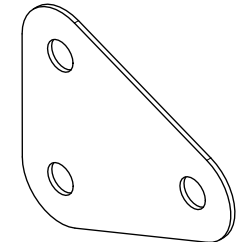
#MB1089 - TAILGATE PAINT COVER
QTY 2



#MB1089 - BUSHING LINER
QTY 2



#MB1089 - BUSHING
QTY 4



#MB1089 - LOWER HINGE SHIM
QTY 3



Dwg/Part No:

MB1089 - Customer

Description:

Jeep JL Tire Carrier Assembly

Mat'l:

Sheet No: **1** of **1**

Rev No: **0**