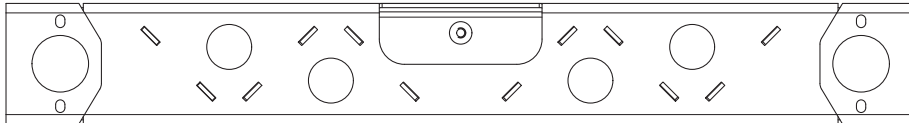


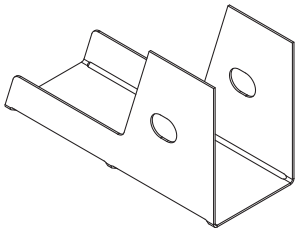
FRAME CHOP REAR BUMPER AND CROSS MEMBER FOR JEEP JK / JKU



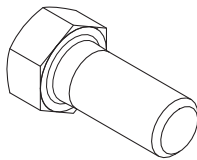
#MB1081
JK FRAME CHOP REAR BUMPER
QTY 1



#MB3026
FRAME CHOP REAR CROSS MEMBER
QTY 1



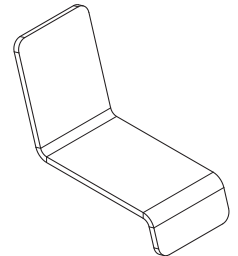
#MB3026-JIG
FRAME CUTTING JIG
QTY 1



HEX BOLT
7/16 x 1" GR 8 ZINC
QTY 3



FLAT WASHER
7/16"
QTY 3



#MB3025-13
FRAME RAIL CAP
QTY 2

FRAME CHOP REAR BUMPER AND CROSS MEMBER FOR JEEP JK / JKU

- 1** Disconnect negative battery terminal.
- 2** Remove factory rear bumper
- 3** Remove rear body bolts & nuts



- 4** Mark, cut and remove factory rear crossmember and body mounts
Remove rear body bolts & nuts



FRAME CHOP REAR BUMPER AND CROSS MEMBER FOR JEEP JK / JKU

- 5** Now that the crossmember has been removed, proceed to body mounts



- 6** Grind the frame smooth for fitment

- 7** Take the supplied jig and wrap it around the frame, lining it up flush with the end of the frame.

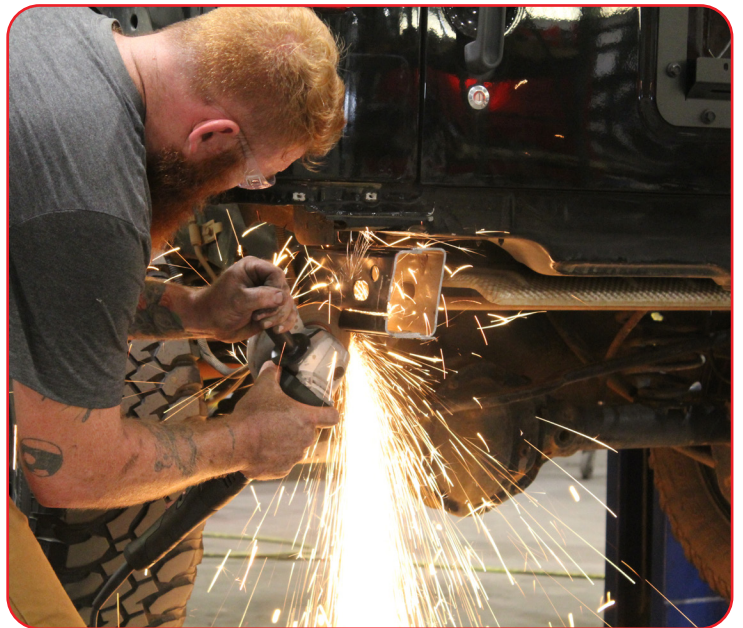


FRAME CHOP REAR BUMPER AND CROSS MEMBER FOR JEEP JK / JKU

- 8** Use the jig to mark the frame for cutting. The same jig will be used for both sides

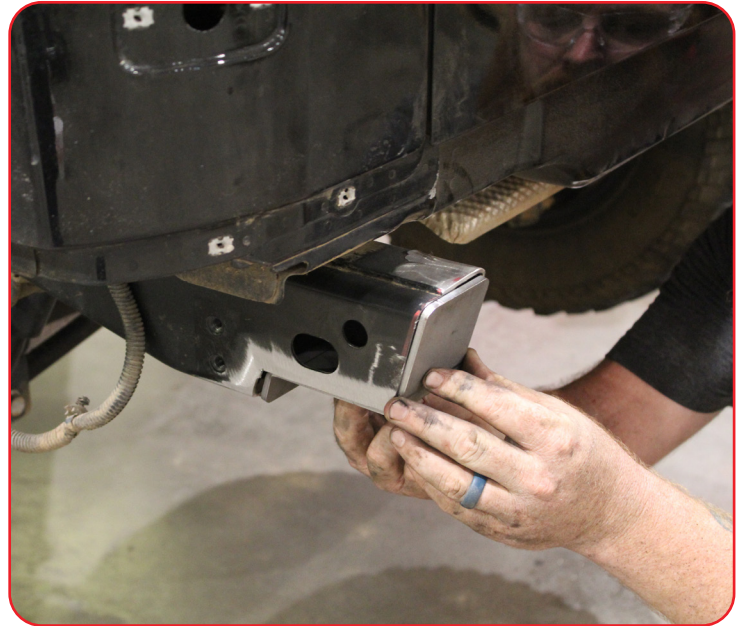


- 9** Cut the frame on the marked lines



FRAME CHOP REAR BUMPER AND CROSS MEMBER FOR JEEP JK / JKU

- 10** Place the supplied end cap onto the frame. You may need to further grind and smooth to ensure a proper fit



- 11** Tack end cap into place and check fitment, then fully weld on end cap



FRAME CHOP REAR BUMPER AND CROSS MEMBER FOR JEEP JK / JKU

- 12** We recommend painting the crossmember before install. Use a piece of 1" tape to keep paint off the weld locations

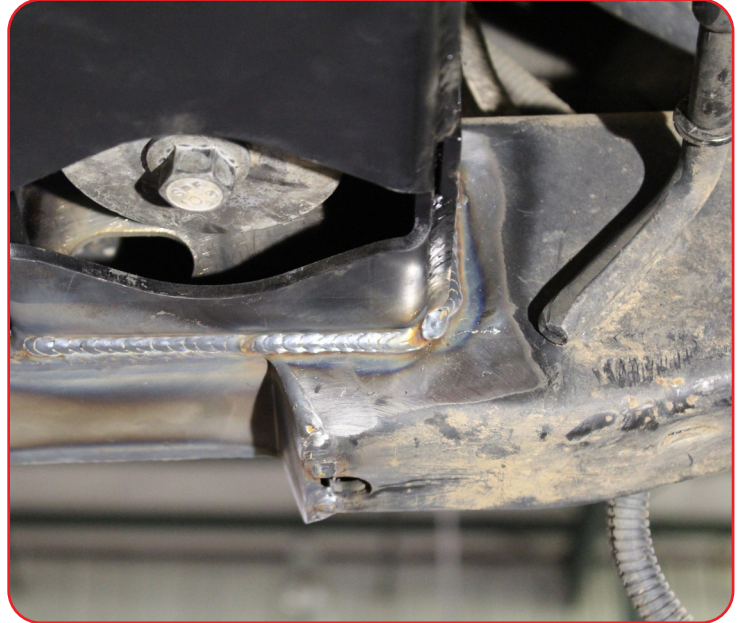


- 13** Hold crossmember up and have a helper install the body bolts



FRAME CHOP REAR BUMPER AND CROSS MEMBER FOR JEEP JK / JKU

14 Once installed, weld crossmember to frame



15 Install bumper using 2 factory bolts on each side of the frame plus three supplied bolts into the crossmember



FRAME CHOP REAR BUMPER AND CROSS MEMBER FOR JEEP JK / JKU

