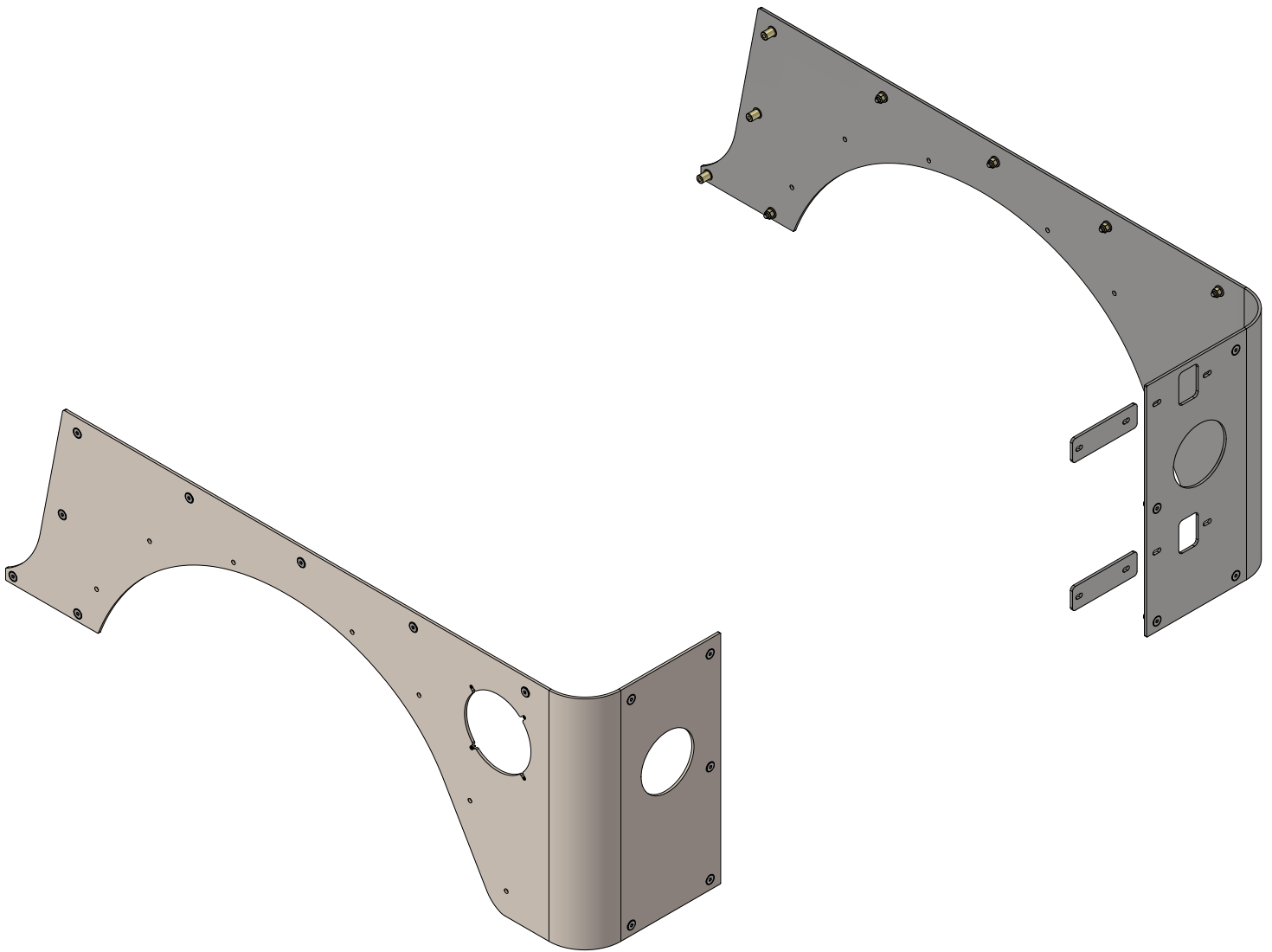
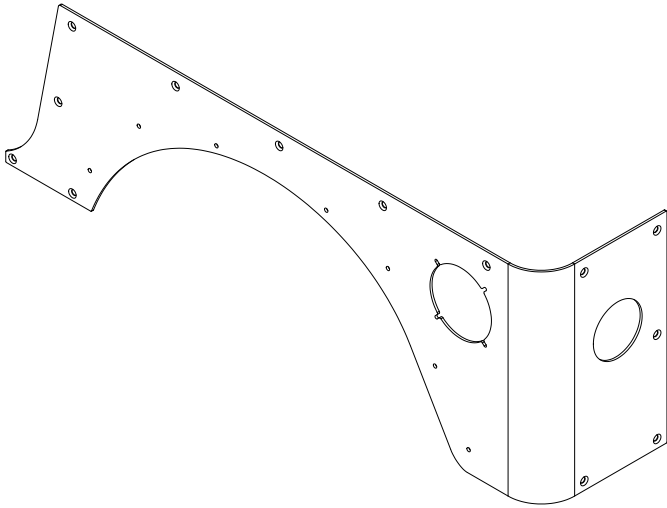


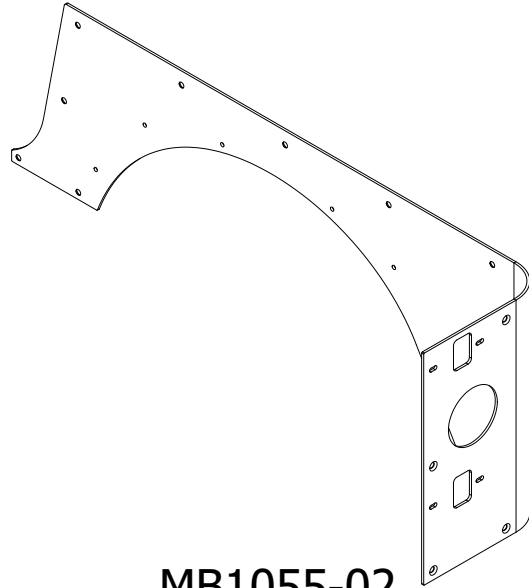
MB1055 - Assembly Instructions Factory Cut Corner Gaurds**MB1055 - FACTORY CUT CORNER GUARDS
FOR JEEP TJ****ASSEMBLY INSTRUCTIONS**

MB1055 - Shipping Factory Cut Corner Gaurds

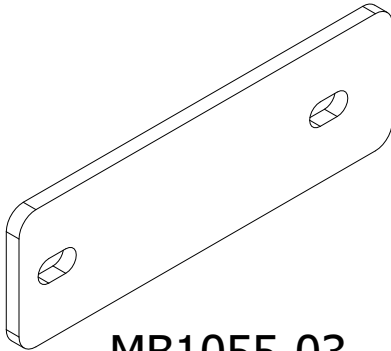
CONTENTS



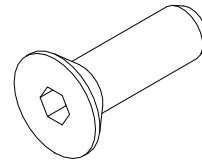
MB1055-01
Qty 1



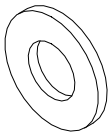
MB1055-02
Qty 1



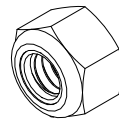
MB1055-03
Qty 2



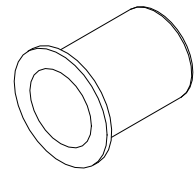
**5/16 x 1" STAINLESS FLAT HEAD
SOCKET CAP SCREW**
Qty 25



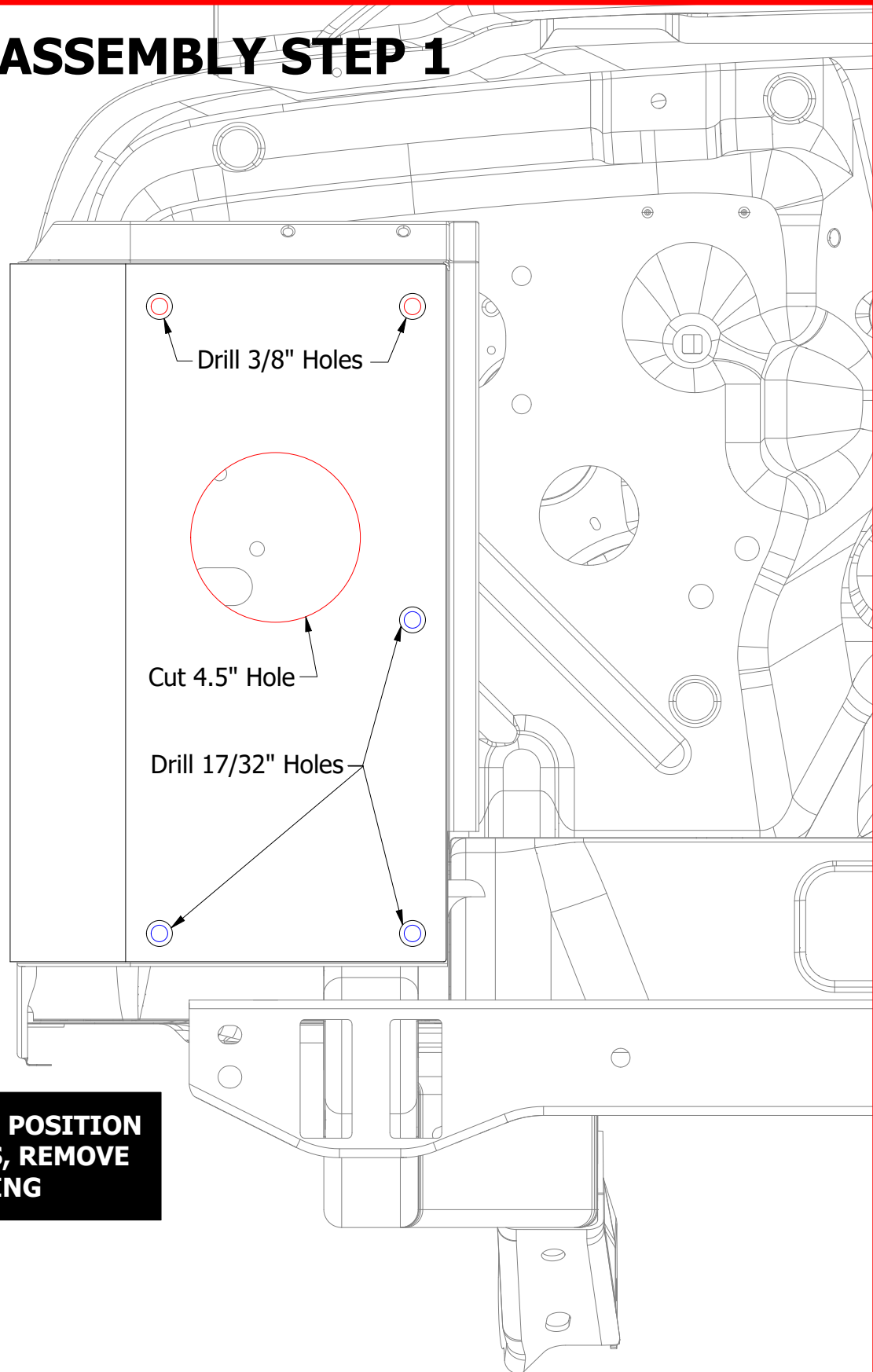
5/16" FLAT WASHER
Qty 13



5/16" NYLOCK HEX NUT
Qty 13



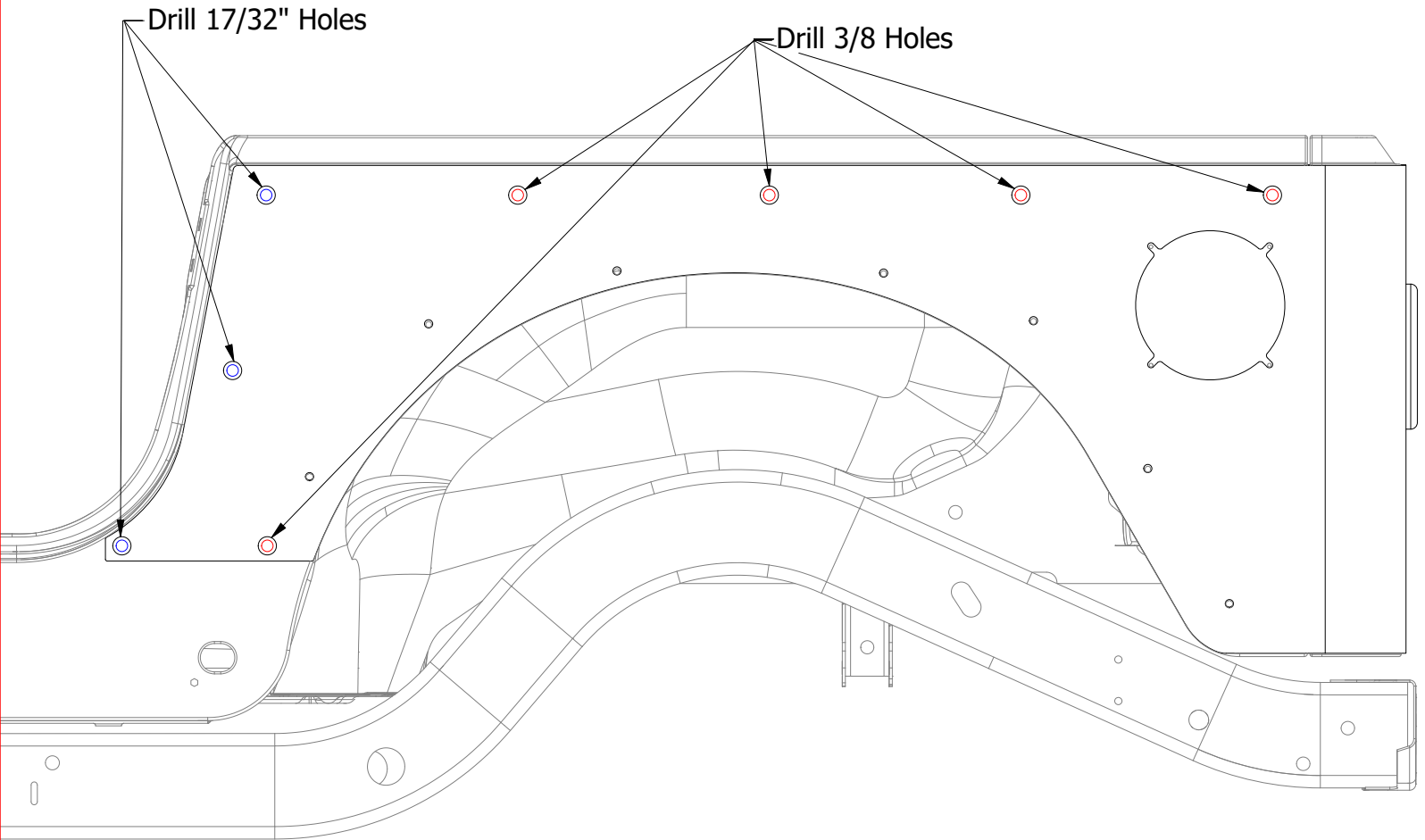
5/16" RIVNUT
Qty 14

MB1055 - Assembly Instructions Factory Cut Corner Gaards**ASSEMBLY STEP 1**

**SECURE MB1055-01 IN POSITION
AND MARK ALL HOLES, REMOVE
BEFORE DRILLING**

MB1055 - Assembly Instructions Factory Cut Corner Gaurds

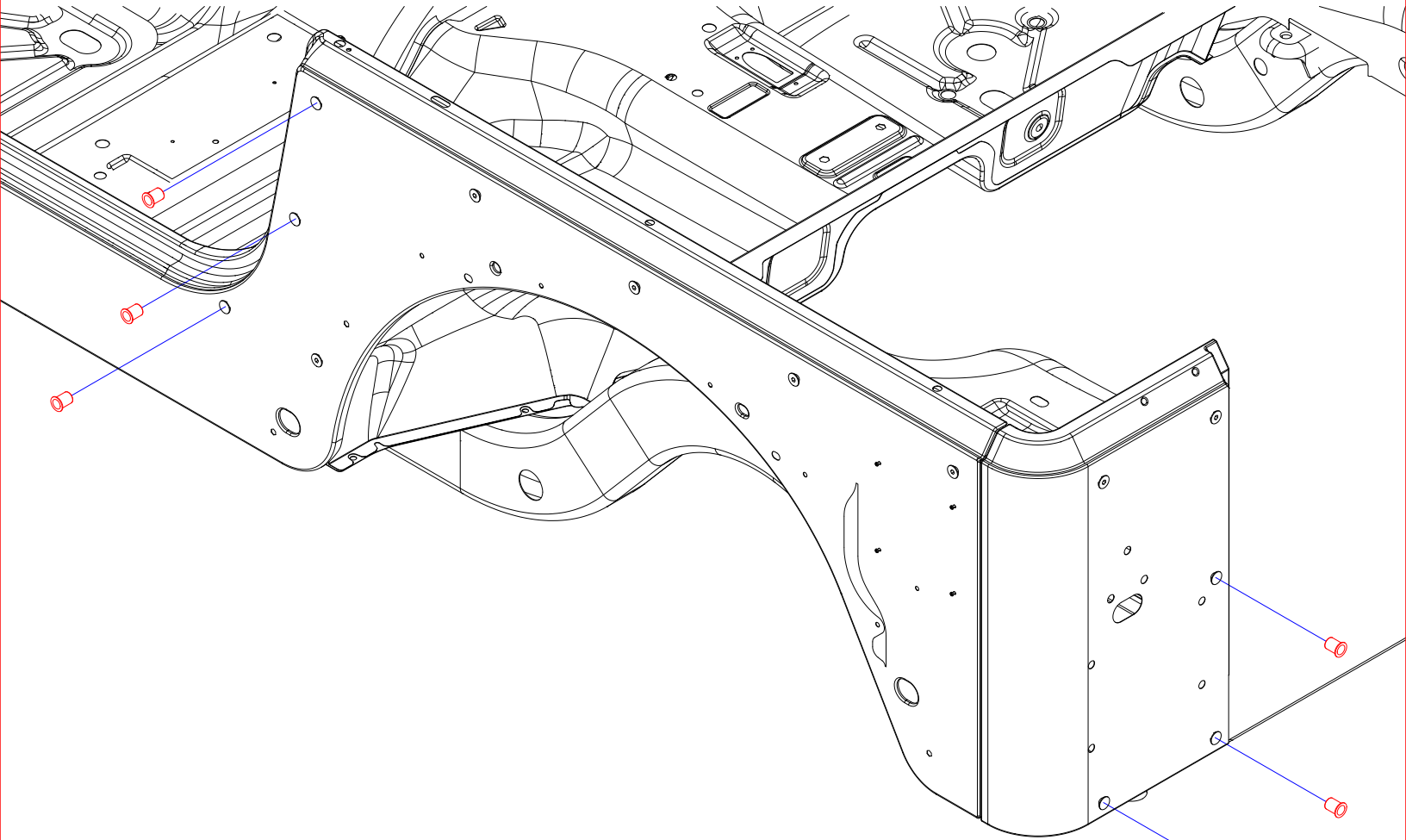
ASSEMBLY STEP 2



**SECURE MB1055-01 IN POSITION
AND MARK ALL HOLES, REMOVE
BEFORE DRILLING**

MB1055 - Assembly Instructions Factory Cut Corner Gaurds

ASSEMBLY STEP 3



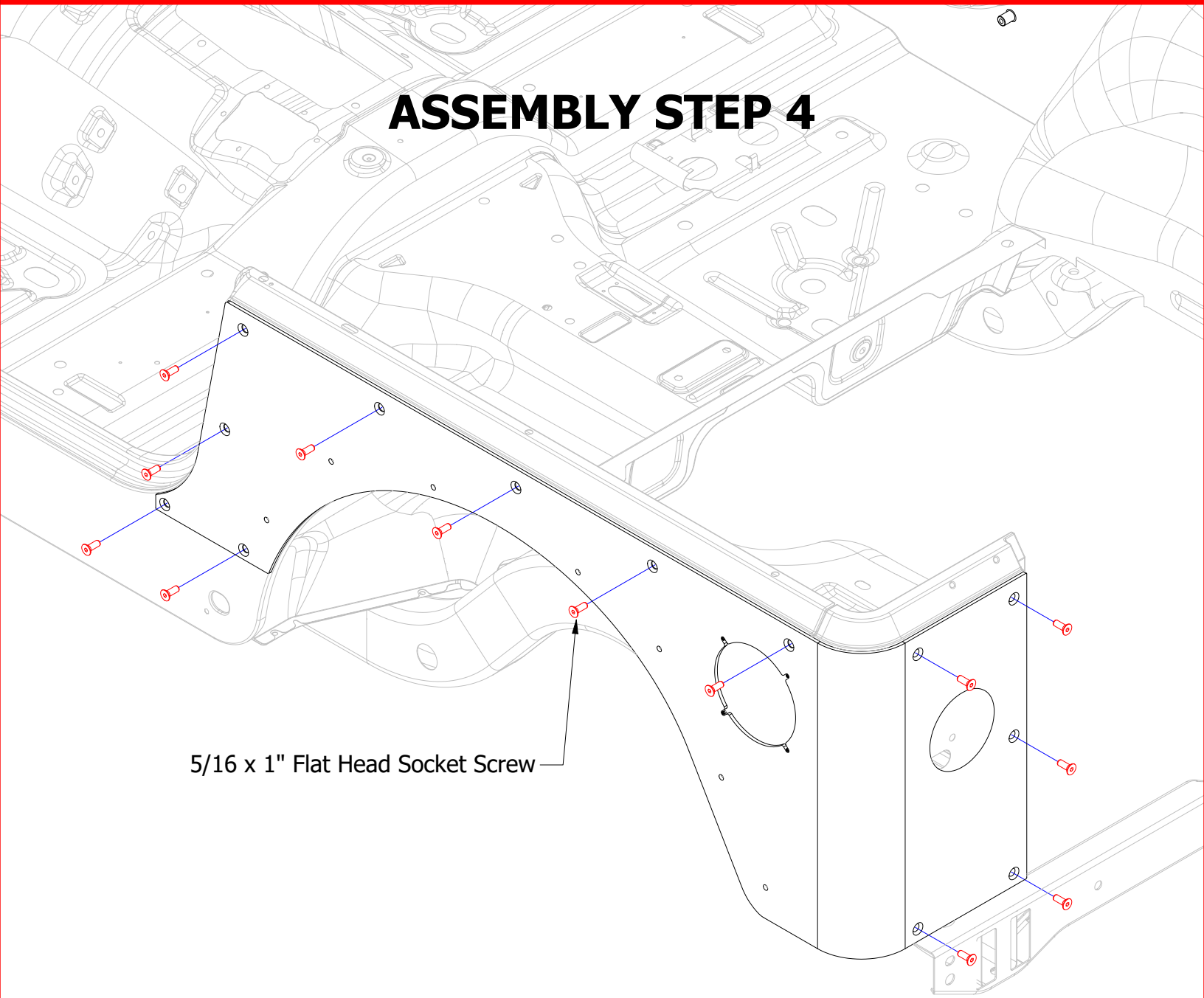
2 SPARE RIVNUTS ARE INCLUDED

5/16" Rivnut

MB1055 - Assembly Instructions Factory Cut Corner Gaards

ASSEMBLY STEP 4

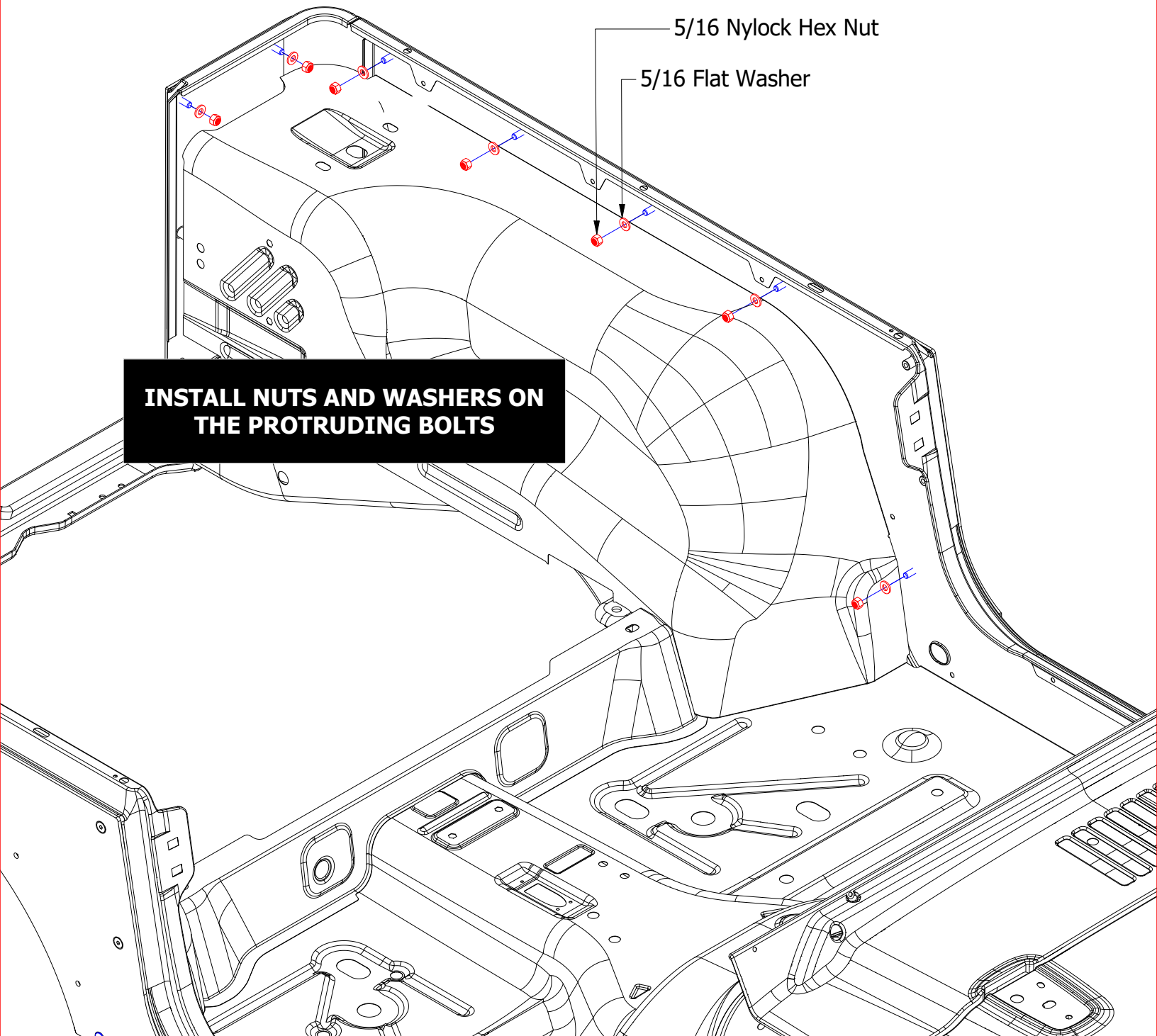
5/16 x 1" Flat Head Socket Screw



MB1055 - Assembly Instructions Factory Cut Corner Gaards**ASSEMBLY STEP 5**

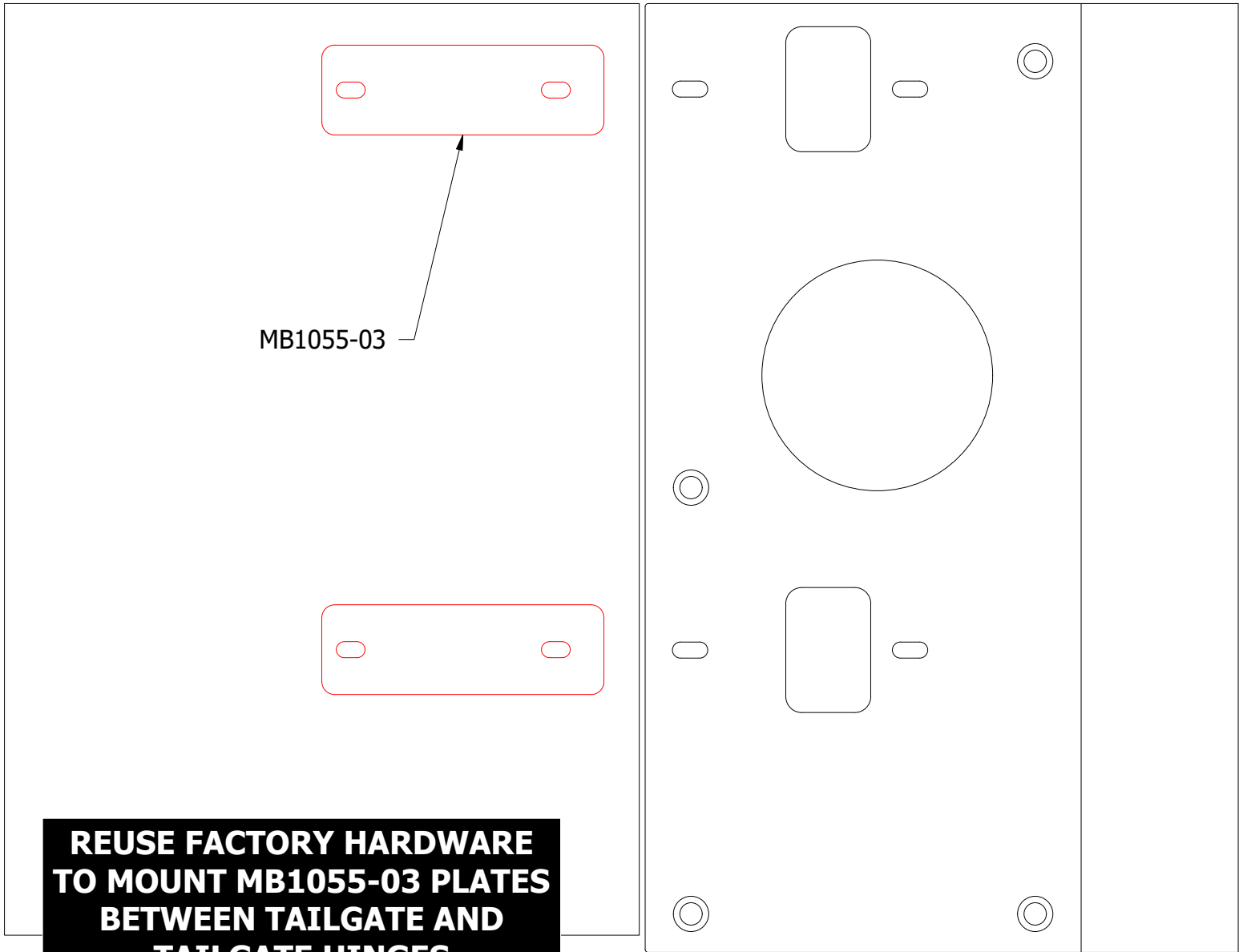
INSTALL NUTS AND WASHERS ON THE PROTRUDING BOLTS

5/16 Nylock Hex Nut
5/16 Flat Washer



MB1055 - Assembly Instructions Factory Cut Corner Gaards

ASSEMBLY STEP 6



**REUSE FACTORY HARDWARE
TO MOUNT MB1055-03 PLATES
BETWEEN TAILGATE AND
TAILGATE HINGES**