

Motobilt Rocker Guards Installation Instructions

Note:

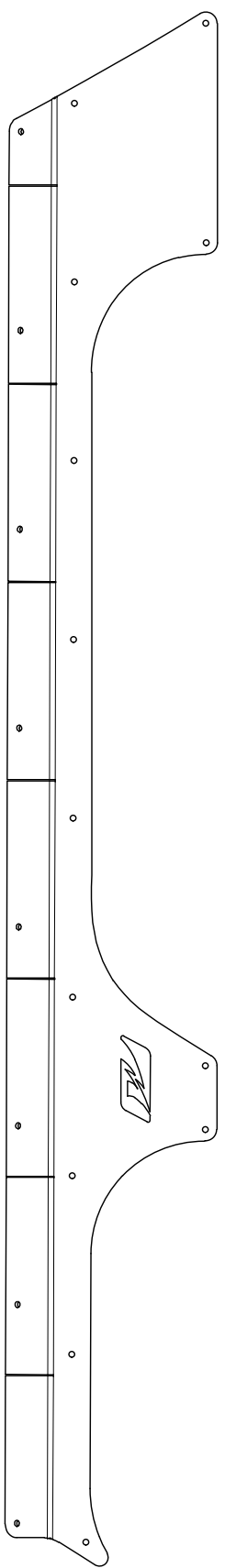
The following instructions can apply to both the #MB1014 and #MB1095 rocker guards, shown below.



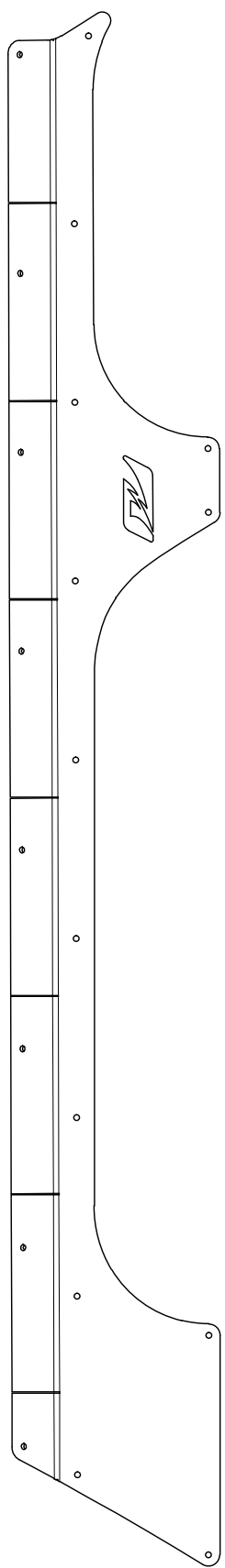
MB1014 Rocker Armor for Jeep JKU 4 Door



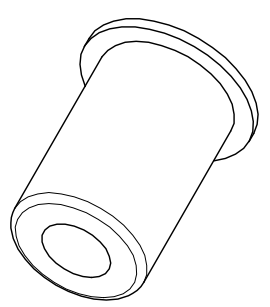
MB1095 Rocker Armor for Jeep JL 4 Door Unlimited



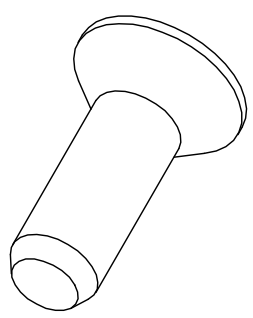
#MB1014
(DRIVER)
QTY 1



#MB1014
(PASSENGER)
QTY 1



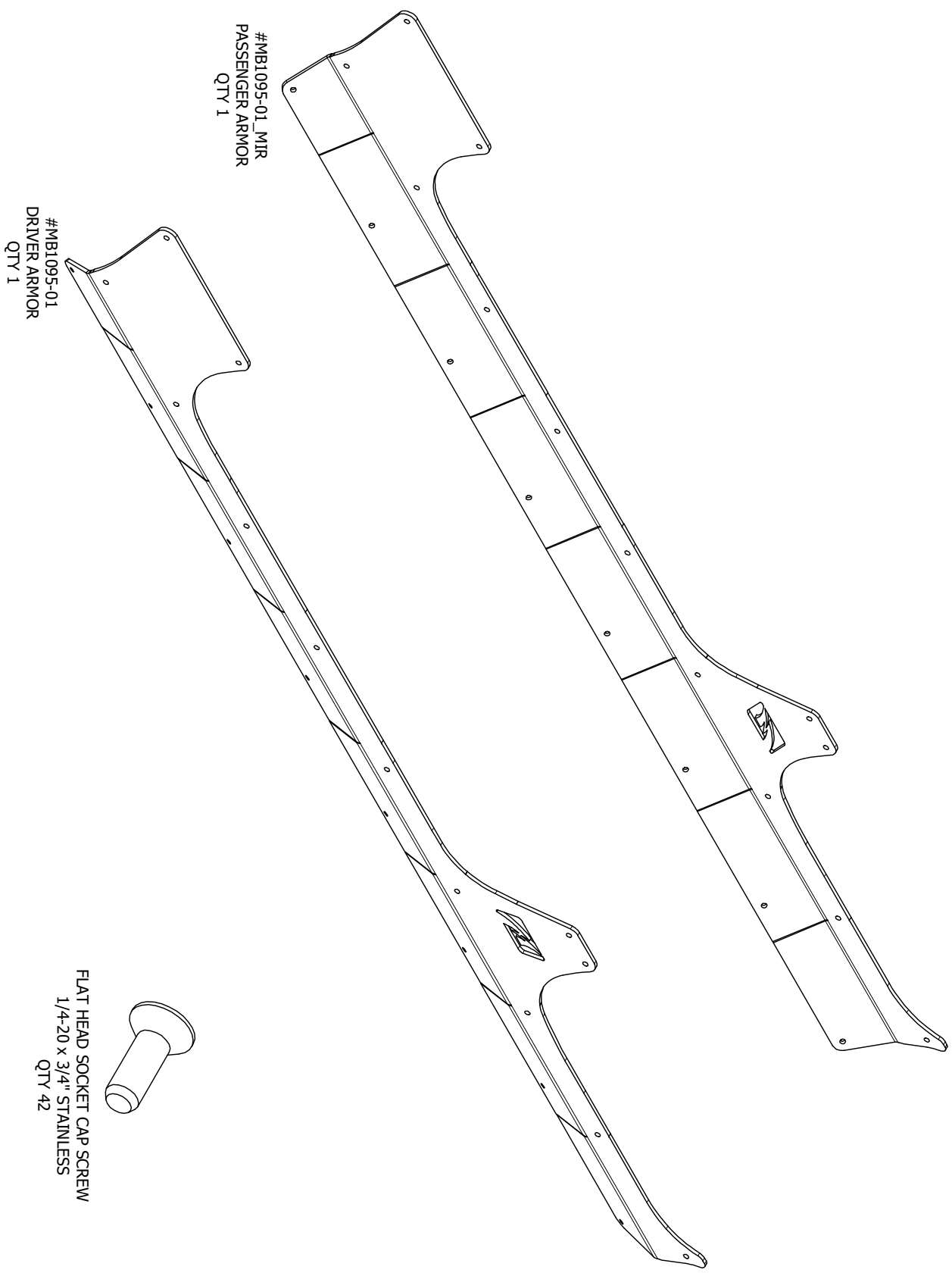
1/4"-20 RIVNUT
QTY 42



FLATHEAD SOCKET CAP SCREW STAINLESS
1/4"-20 x 3/4"
QTY 42



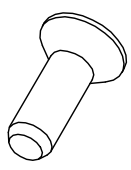
Dwg/Part No: **MB1014 - Customer**
Description: **Jeep JK Unlimited Rocker Armor 4 Door**
Sheet No: **1** of **1**
Rev No: **0**
Mat'l: **3/16" P&O Steel**



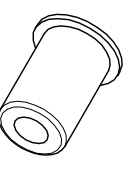
#MB1095-01 MIR
PASSENGER ARMOR
QTY 1

#MB1095-01
DRIVER ARMOR
QTY 1

FLAT HEAD SOCKET CAP SCREW
1/4-20 x 3/4" STAINLESS
QTY 42



RIVNUT
1/4"
QTY 42



Dwg/Part No: **MB1095 - Customer**
Description: **Jeep JL 4 Door Rocker Steps**
Mat'l: **3/16" Steel**

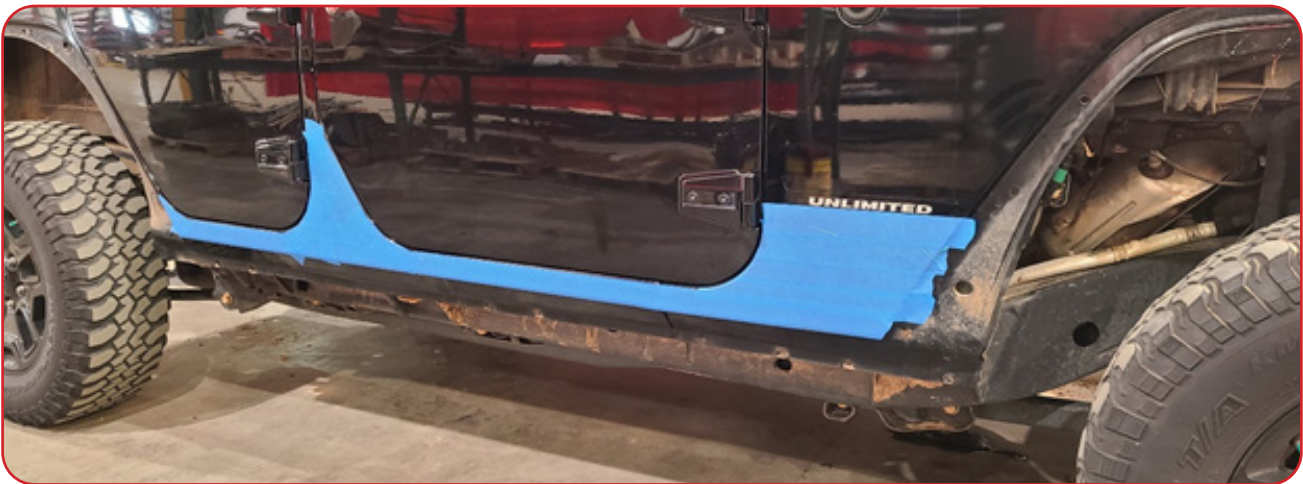
Sheet No: **1** of **1**
Rev No: **0**

THIS DOCUMENT & THE INFORMATION CONTAINED WITHIN IS THE SOLE PROPERTY OF MOTORBILT INC. THIS DOCUMENT SHALL NOT BE COPIED, STORED, DUPLICATED, REVERSE ENGINEERED OR OTHERWISE WITHOUT THE EXPRESS WRITTEN CONSENT OF MOTORBILT INC. COPYRIGHT © MOTORBILT INC. COPYRIGHTED MATERIAL IS PROTECTED BY INTERNATIONAL COPYRIGHT LAWS. "MOTORBILT" IS A REGISTERED TRADE NAME.

Motobilt Rocker Guards Installation Instructions



- 1** Disconnect your vehicle's battery
- 2** Remove factory step rail if mounted on vehicle



- 3** Wipe down lower rocker to remove dirt, dust and debris
- 4** Apply painters tape to the rocker starting from the middle of the lower door hinge going down to the bottom of the rocker

Motobilt Rocker Guards Installation Instructions



- 5** Have a friend help you hold the rocker guard in place so that you can mark mounting hole locations.
- 6** Ensure that you have the same amount of body reveal under both the doors and around the front and rear door jambs. You are looking for approximately 1/4" reveal all the way around. (You should have approximately 1/4" reveal from the top of the rocker guard to the bottom of the door jamb)
- 7** Mark the upper front hole while held in place



- 8** Mark the rear-most hole while held in place. You can use clamps and we recommend a soft plastic face clamp if you do so.

Motobilt Rocker Guards Installation Instructions

- 9** Using a 1/8" drill bit, drill a pilot hole in the two holes you just marked
- 10** Open the hole you just drilled to accept the supplied rivnut by using a 25/64 drill bit.

Motobilt Rocker Guards Installation Instructions



- 11** Set the rivnut in the two hole locations with the proper tool. An Astro Pneumatic rivnut drill adapter is a relatively inexpensive tool that does an excellent job.

Motobilt Rocker Guards Installation Instructions

- 12** Using two (2) of the supplied bolts, install the rocker armor by using the rivnuts you just installed. Check your reveal around all surfaces now.
- 13** Now mark each of the remaining holes using a marker, pen, or a center punch.

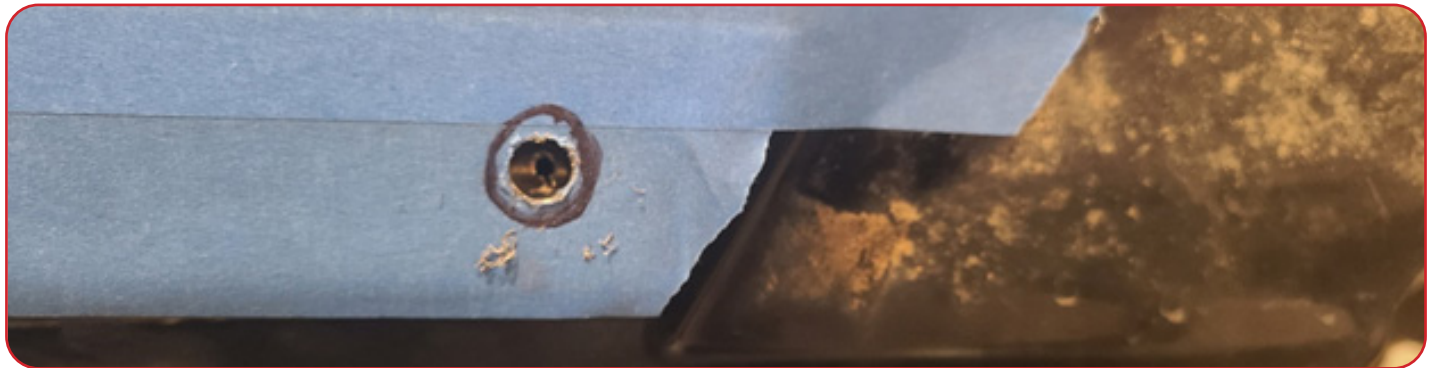
Installer Tip:

After marking the hole center, leave the rocker armor installed and drill all pilot holes with the 1/8" drill bit. This will give you a visual reference to ensure that you do not get too far off center when drilling.

- 14** Remove the rocker armor to drill with the 25/64 drill bit.

Motobilt Rocker Guards Installation Instructions**Installer Tip:**

The three circled holes are the most tricky to deal with. These holes have a second layer of material behind them. This material is inset by approximately 1/2". Extra caution is needed when drilling them.

Motobilt Rocker Guards Installation Instructions**Installer Tip:**

In the first photo you can see the pilot hole drilled through the first layer only to show you how it looks.

**15**

Once you have drilled all the holes with the 25/64 bit, you can install all the remaining rivnuts.

Motobilt Rocker Guards Installation Instructions

16 Once you have all the rivnuts installed, remove the painters tape.

17 Install the rocker guard using the supplied bolts.

**Installer Tip:**

If you have accidentally installed a rivnut off-center of the mounting holes, you may open up the mounting holes on the rocker armor. Be careful not to damage the counter-sunk portion. We recommend drilling from the back side of the part and going no larger than 2 fractional sizes over the existing hole.