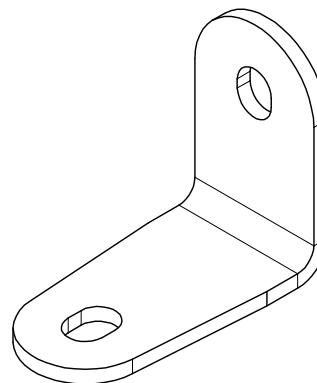
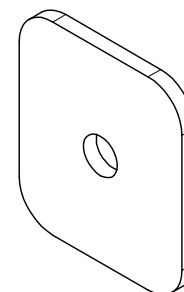


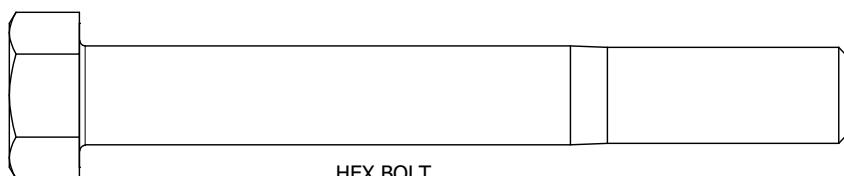
#MB1010
JK REAR STUBBY BUMPER
QTY 1



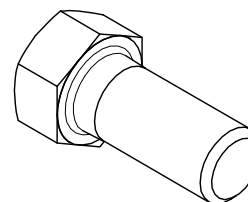
#MB1010-04
L BRACKETS
QTY 2



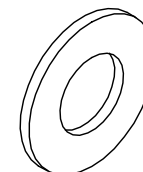
#MB1010-07
FRAME PLATES
QTY 2



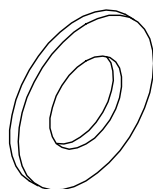
HEX BOLT
1/2" UNC x 4" LG
QTY 2



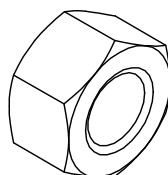
HEX BOLT
7/16" UNC x 1" LG
QTY 2



7/16" FLAT WASHER
QTY 2



1/2" FLAT WASHER
QTY 2



NYLOCK NUT
1/2" UNC
QTY 2



Dwg/Part No:

MB1010 - Customer

Description:

Jeep JK Rear Stubby Bumper

Mat'l:

Sheet No: **1** of **1**

Rev No: **0**