

# DIY Face Mask Instructions



Follow @thestitchinghorse\_ for updates on mask availability

Follow @elleseashoppe for highlights Mask Tutorial and mask availability

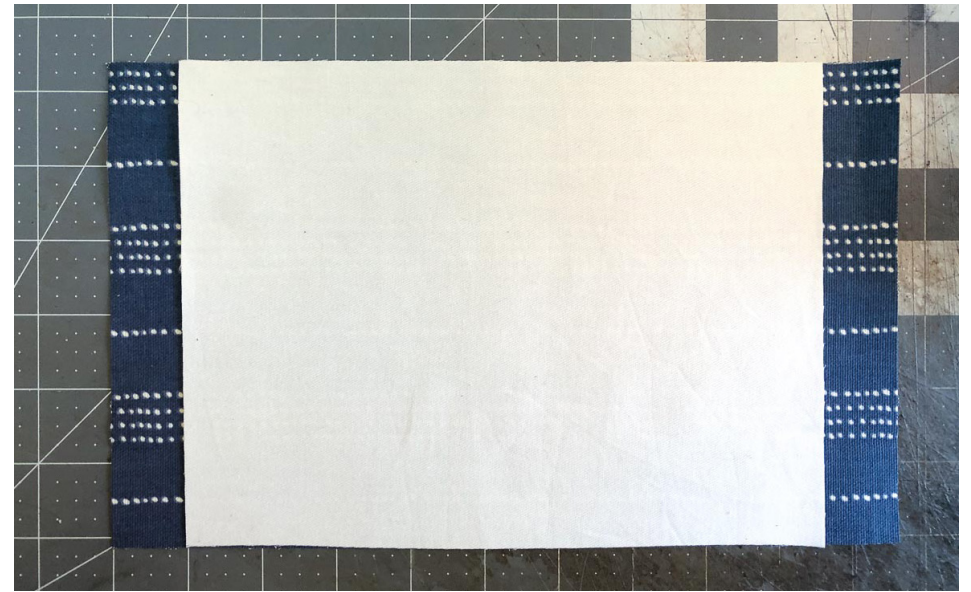
# Materials & Supplies

---

- scissors
- sewing machine
- 3/8" wide elastic
- ruler or tape measure
- 100% cotton fabric or whatever you have available
- pipe cleaners or floral wire
- iron and ironing board
- safety pin
- plyers (optional)
- 1 - 10.5" x 6.5" piece of fabric
- 1 - 8" x 6.5" piece of fabric
- 1 - 6" long pipe cleaner or floral wire
- 2 - 10" long 3/8" elastic straps

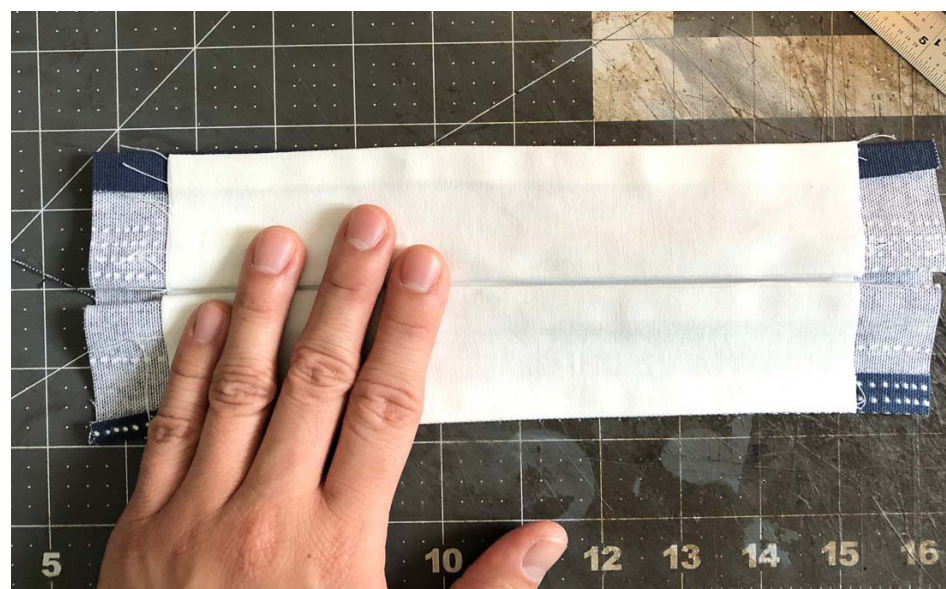
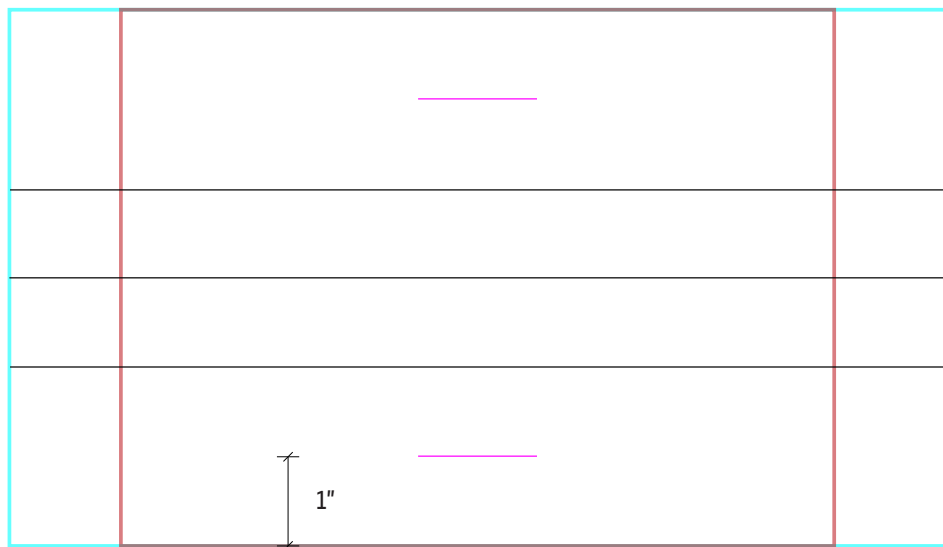
**10.5" x 6.5" rectangle**

**8" x 6.5" rectangle**



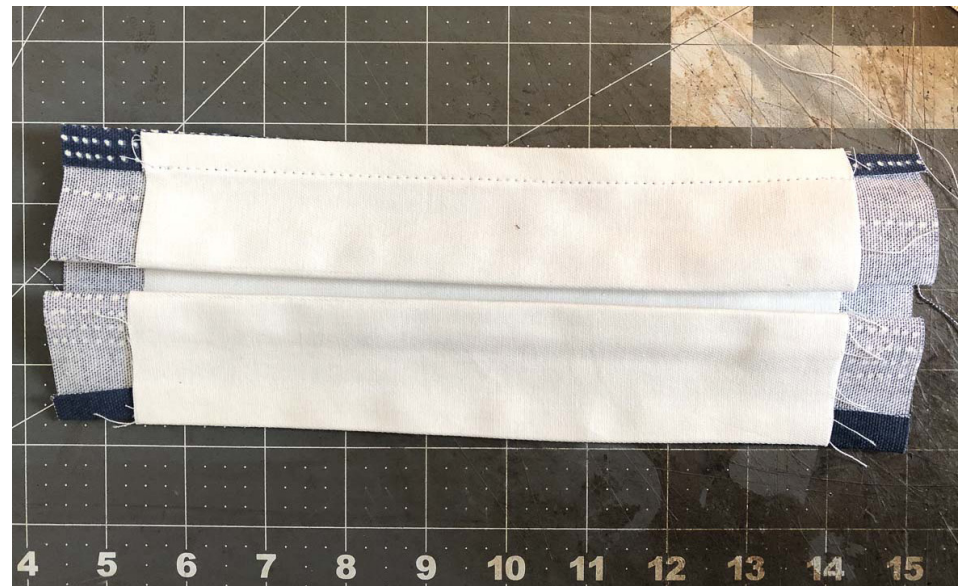
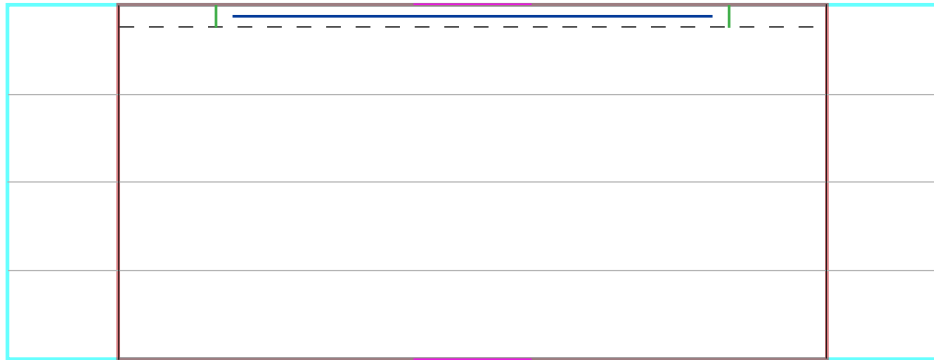
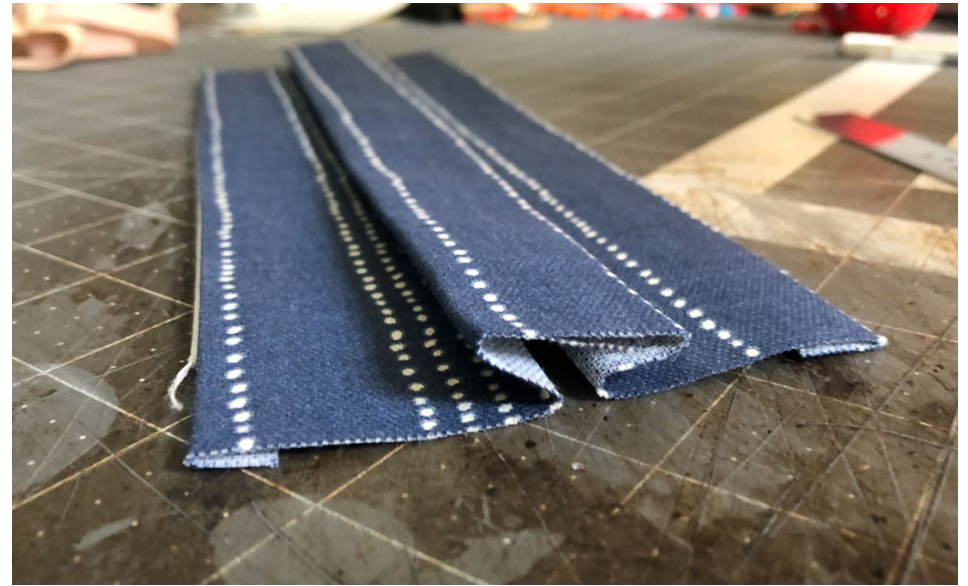
1. Face the finished-sides of your cut pieces of fabric towards each other.
2. Center the fabrics to each other (references diagram above).
3. Sew top and bottom edges of the fabrics together with a 1/4" seam allowance
4. Turn fabric finished-side out and iron flat





5. Fold the top and bottom edges together making a center crease as represented by the center solid black line; Iron your crease
6. Fold the bottom edge to approximately 1" below the top edge (the pink line represents 1" from the top); Iron your crease
7. Fold the top edge to approximately 1" below the top edge (the pink line represents 1" from the top); Iron your crease
8. Using the creases as guides, make "pleats" and iron them flat (reference photos)





9. Stitch a channel at the top portion of your mask to allow for the pipe cleaner or floral wire to be inserted

(Tip: if using floral wire, curl the ends so they do not puncture the fabric)

10. Insert your pipe cleaner or wire (Wire represented as BLUE; Optional Step: Sew the wire in place (see green lines on diagram))





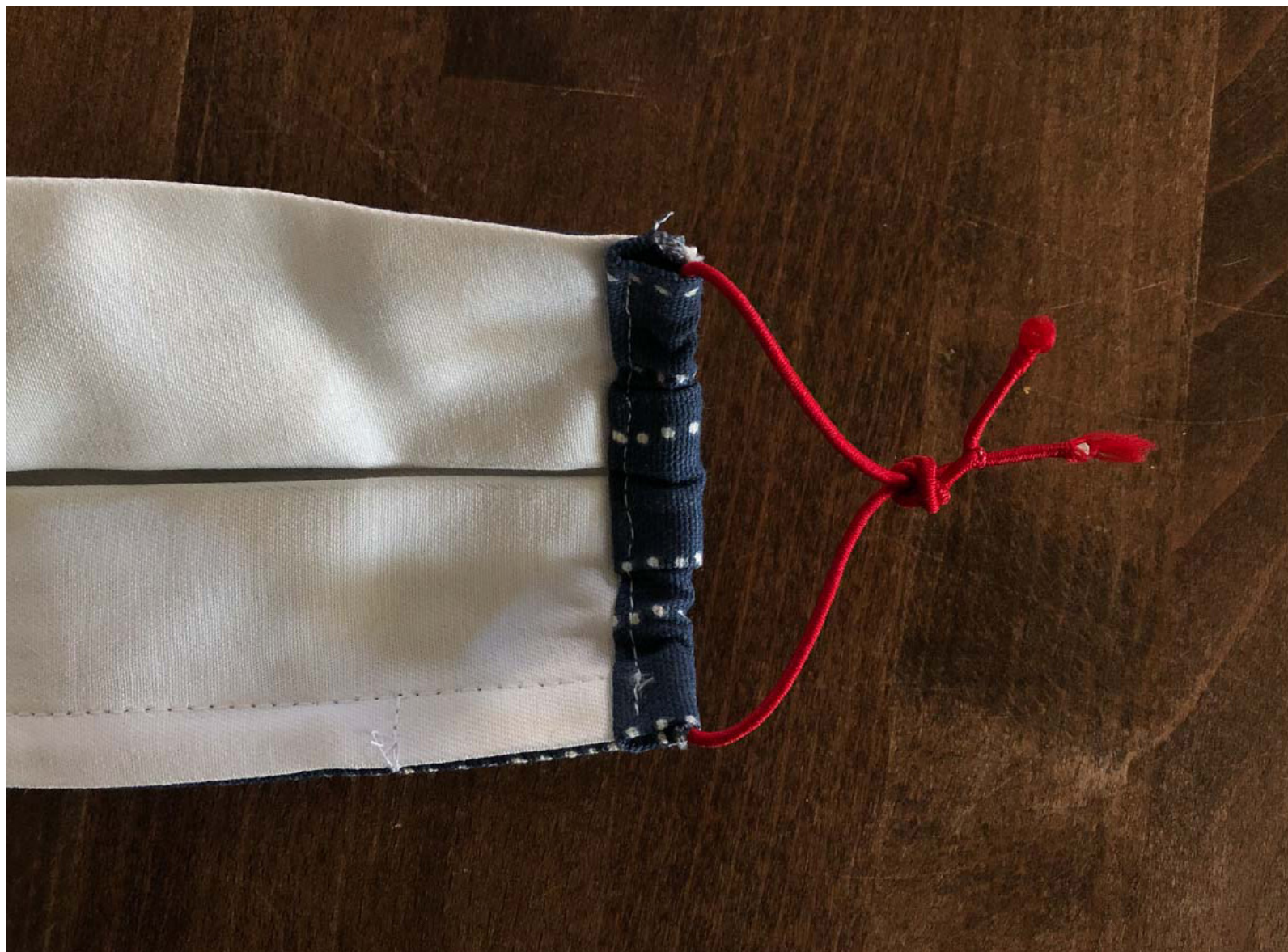
11. Fold the "exposed" fabric ends over twice (at this point all finished-sides of the fabric should be visible; Iron your creases (reference photo))





11. The back of the mask is represented here and the folded-over ends should look similar to diagram above.
12. Sew each end as close as you can to create a channel for the 10" elastic piece.
13. Use safety pin and the elastic you have on hand and feed it through the channels on each side.
14. Tie the ends of the elastic together and pull knot into the channel.





16. **ADJUSTMENT** - If your mask is loose you can adjust the size by rotating to the elastic to knot. Tie an additional knot on the end and re-insert the knot back into the channel.





**CONGRATULATIONS! YOU'VE MADE A MASK!**

PLEASE MAKE, SHARE, FOLLOW, AND REPEAT!!!

**@THESTITCHINGHORSE\_**

**@ELLESEASHOPPE**