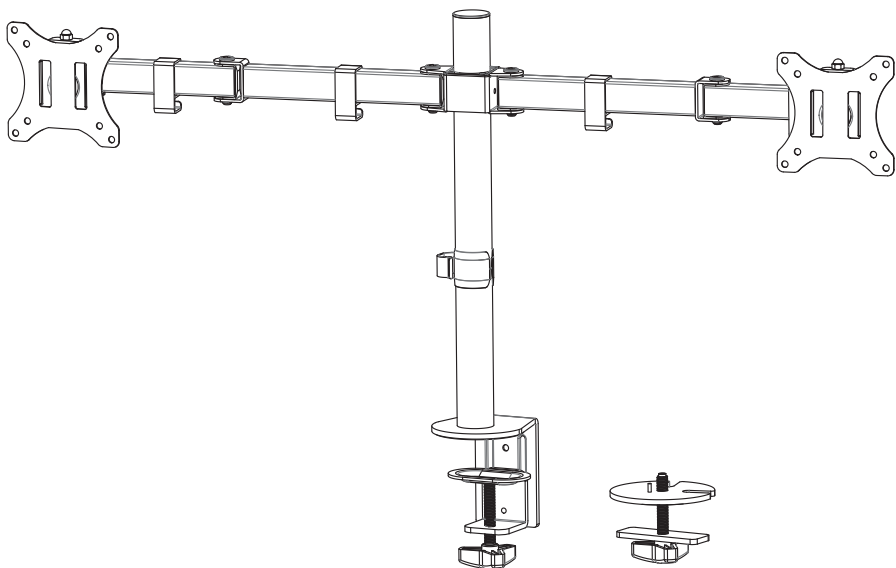




INSTALLATION MANUAL

# Counterbalance Monitor Arm



**ELT-DM02**



75x75/100x100



[www.eletabergo.com](http://www.eletabergo.com)



[service@eletabergo.com](mailto:service@eletabergo.com)



[www.facebook.com/EleTabus](https://www.facebook.com/EleTabus)





Read the entire instruction manual before you start installation and assembly. If you have any questions regarding any of the instructions or warnings, Please contact at **[service@eletabergo.com](mailto:service@eletabergo.com)** for assistance.

## CAUTION:



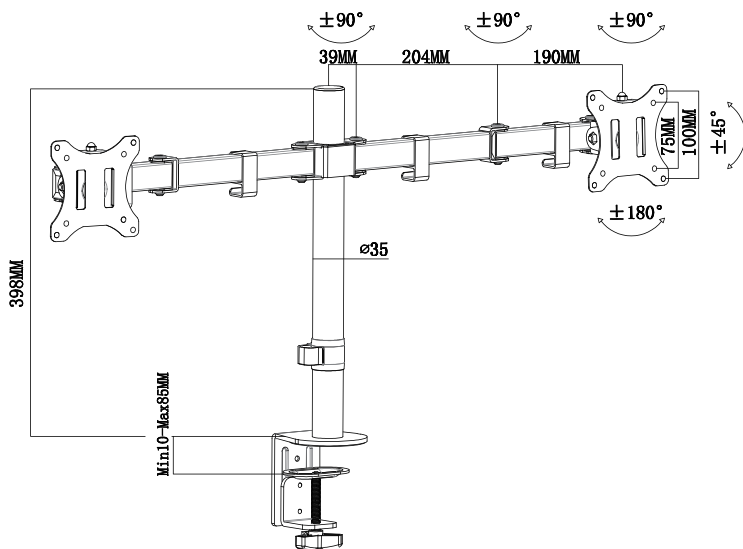
Use with products heavier than the rated weights indicated may result in instability causing possible injury.

- Mounts must be attached as specified in assembly instructions. Improper installation may result in damage or serious personal injury.
- Safety gear and proper tools must be used. This product should only be installed by professionals.
- Make sure that the supporting surface will safely support the combined weight of the equipment and all attached hardware and components.
- Use the mounting screws provided and DO NOT OVER TIGHTEN mounting screws.
- This product contains small items that could be a choking hazard if swallowed. Keep these items away from children.
- This product is intended for indoor use only. Using this product outdoors could lead to product failure and personal injury.

## IMPORTANT:

Ensure that you have received all parts according to the component checklist prior to installation. If any parts are received damaged or defective, please contact us at **[service@eletabergo.com](mailto:service@eletabergo.com)**. We are happy to replace parts to ensure you have a fully functioning product.

## PRODUCT LINE GRAPH



## Parts

### Tools required



5mm  
E1 (X1)

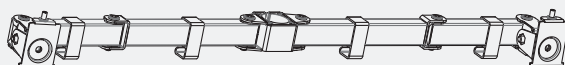


4mm  
E2 (X1)



3mm  
E3 (X1)

### Components



Swivel Arm  
B (X1)



Pole  
C X1



VESA Plate  
A (X2)



Clamp  
D (X1)



C-clamp Plate  
D1 (X1)



Cable Clip  
F (X1)



Nut  
I (X2)



Support Plate  
J (X1)



Grommet Plate  
K (X1)

### Hardware



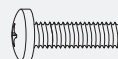
M4x12mm (x8)  
M-A



M4x16mm (x8)  
M-B



M5x12mm (x8)  
M-C



M5x16mm (x8)  
M-D



M-E(x8)



M-F (x8)



G(X3)

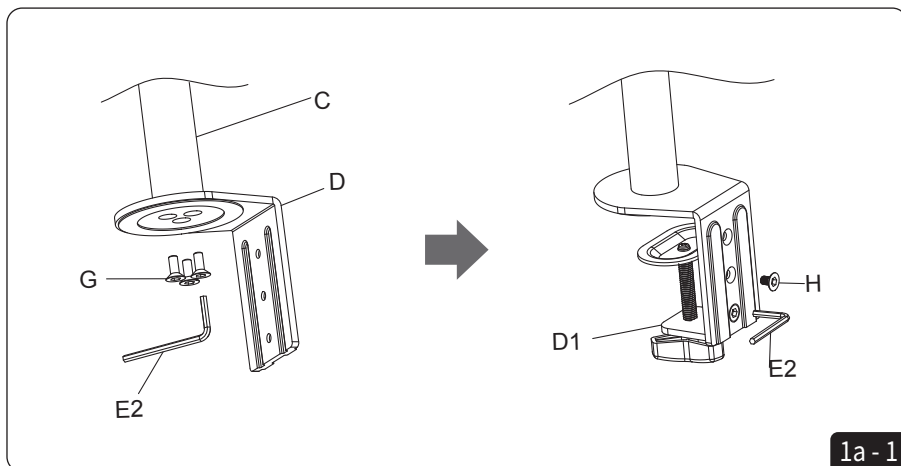


H(X2)

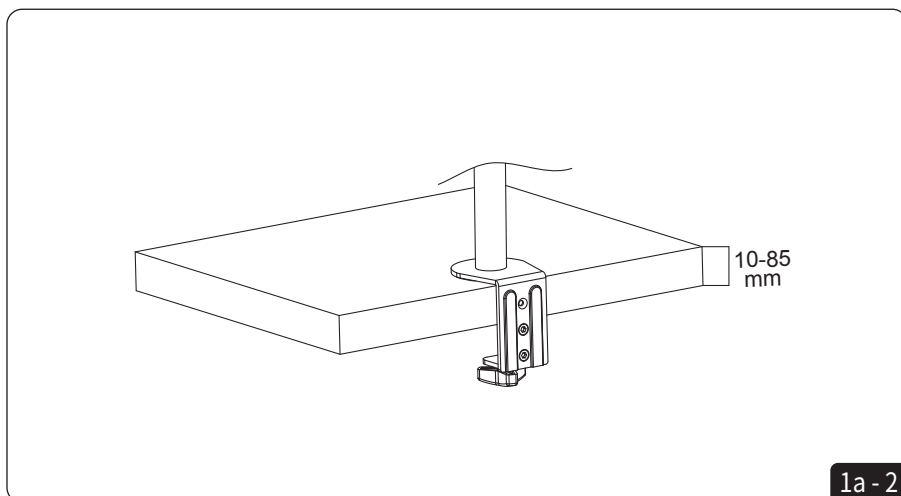
## STEP 1 Choose a mounting option

### OPTION A: Clamp Installation

1. Install clamp mounting plate (D) to the pole (C), and tighten using the Allen wrench (E2). Attach the Clamp to the Mounting Plate using 2pcs bolts (H), and tighten using the Allen wrench (E2).

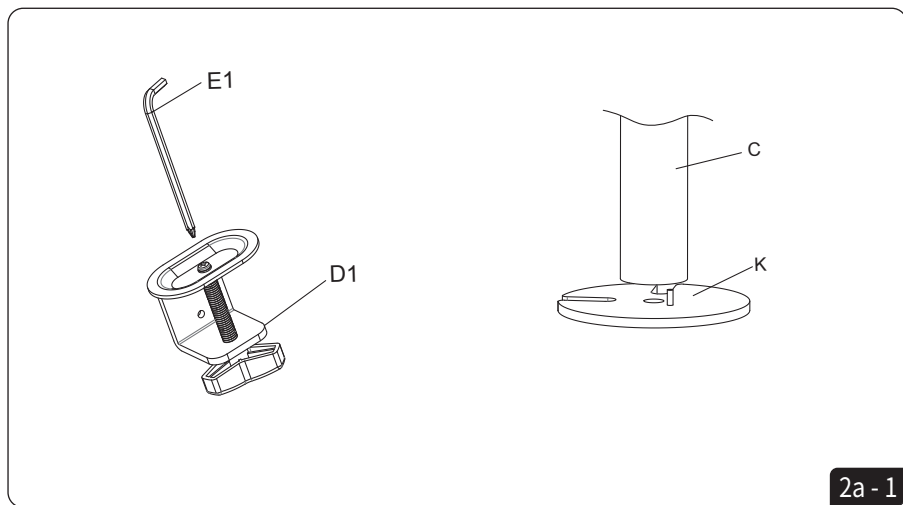


2. Tighten the “C”-Clamp to the desktop using the plastic knob.

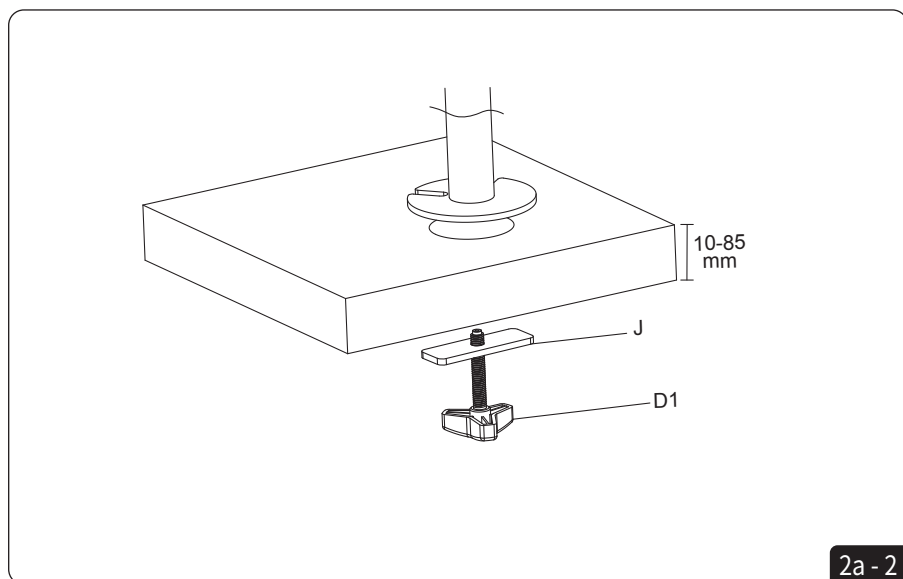


## OPTION B: Existing Grommet Hole Installation

1. Unscrew the screw with an Allen key, and remove the long bolt. See Figure 2a-1. Position pole (C) on the mounting plate (K).

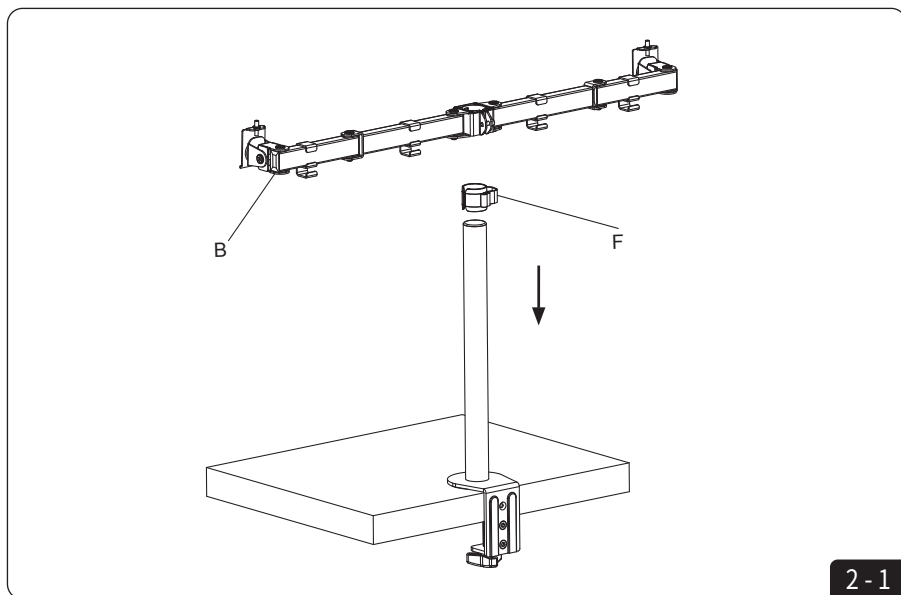


1. Using support plate (J) and long bolt to secure the pole, fasten bolt using plastic knob (D1). See Figure 2a-2.

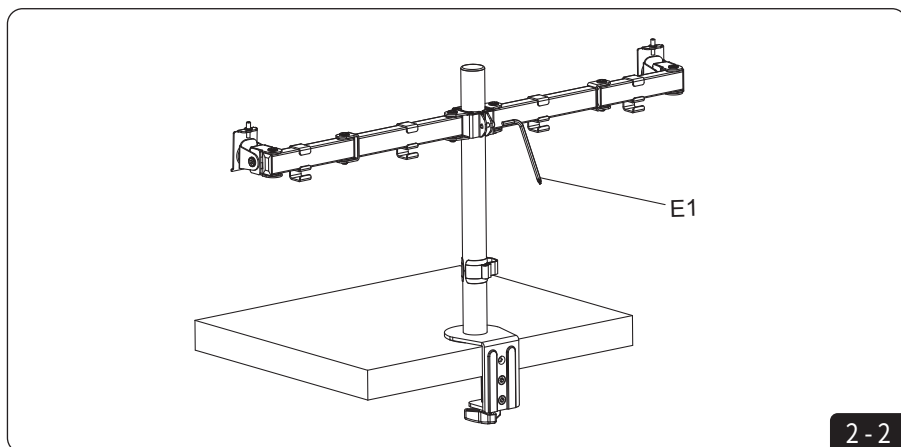


## STEP 2 Install the cable clip and arm to the pole

1. Install cable clip (F) and swivel arm (B) to the pole (C).



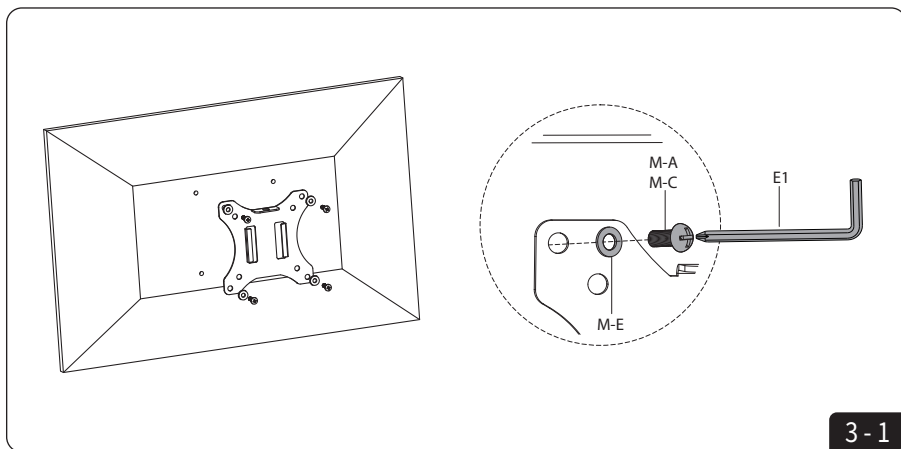
2. Fasten the bolt with supplied Allen wrench (E1). Then unscrew bolt on the head of the arm. See Figure 2-2.



## STEP 3 Attach the VESA plate to the monitor

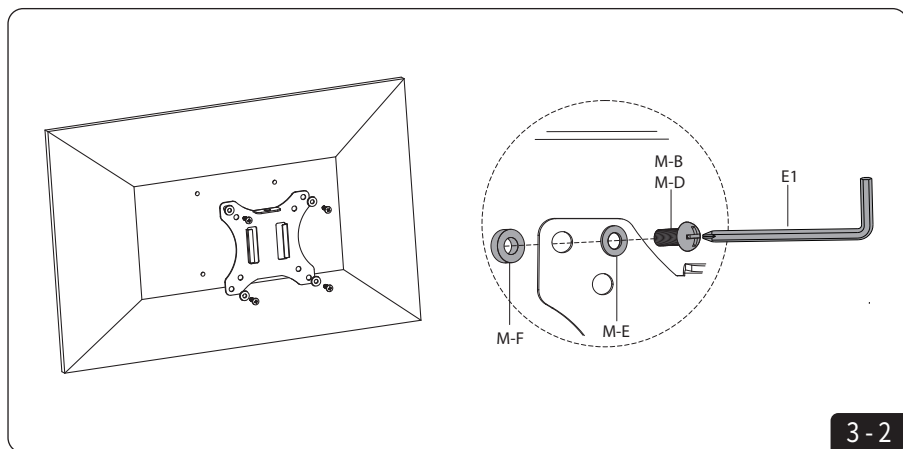
### OPTION A: Flat Back Monitor

Attach the VESA plate (B) to back of monitor and secure with screws (M-A) or (M-C) with washers (M-E). Avoid excessive tightening screws damage the monitor.



### OPTION B: Curved Back Monitor

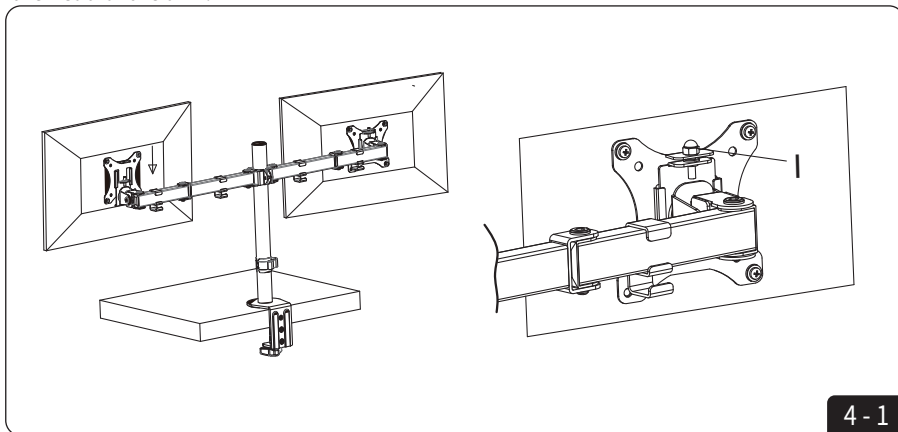
Attach the VESA plate (B) to back of monitor and secure with screws (M-B) or ((M-D) with washers (M-E) and washers (M-F). Avoid excessive tightening screws damage the monitor.





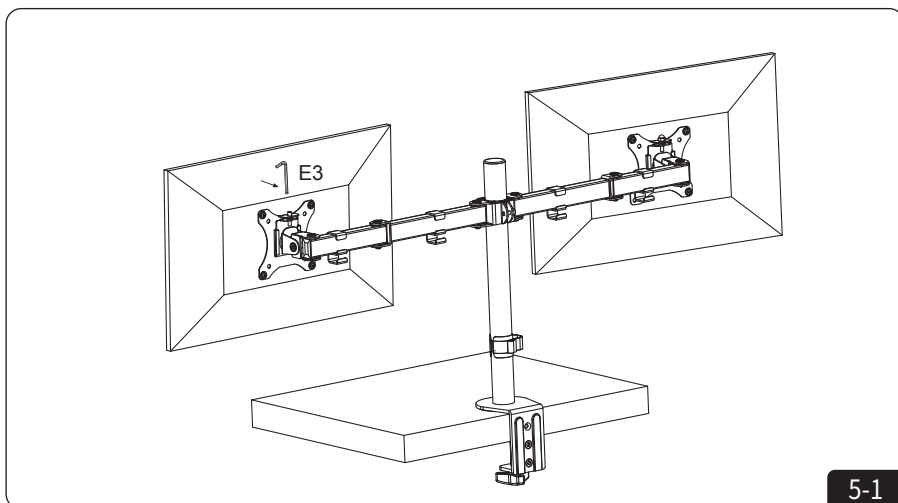
## STEP 4 Install the monitor onto the head of arm

1. Slide the monitor onto the head of arm, then using the nut (I) to tighten the VESA plate and the head of the arm.

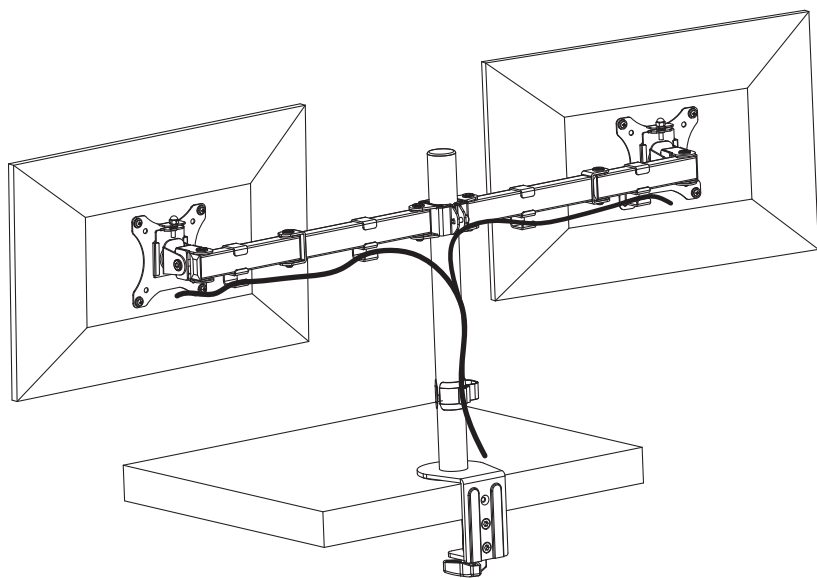


## STEP 5 Adjust the height of the monitors

1. Using the Allen wrench to adjust the screw so as to make the monitors at the same level.



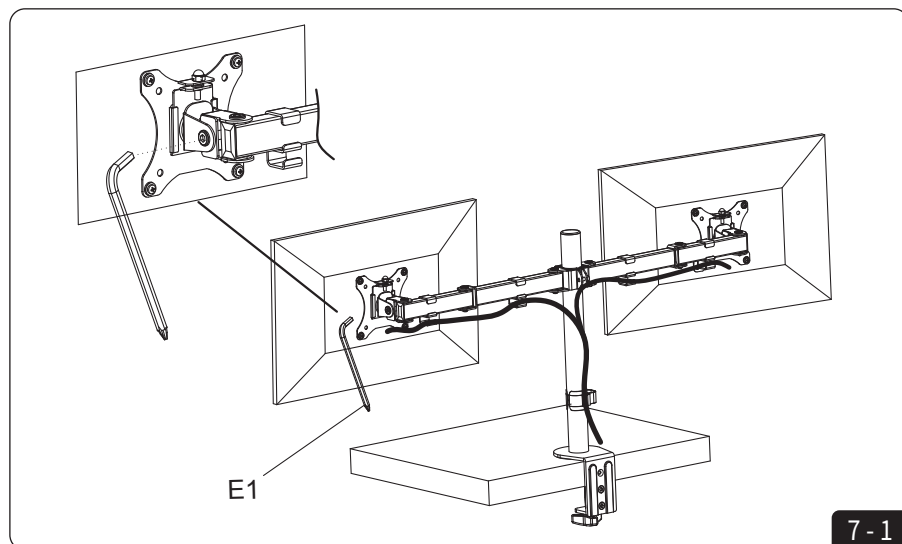
# STEP 6 Cable Management



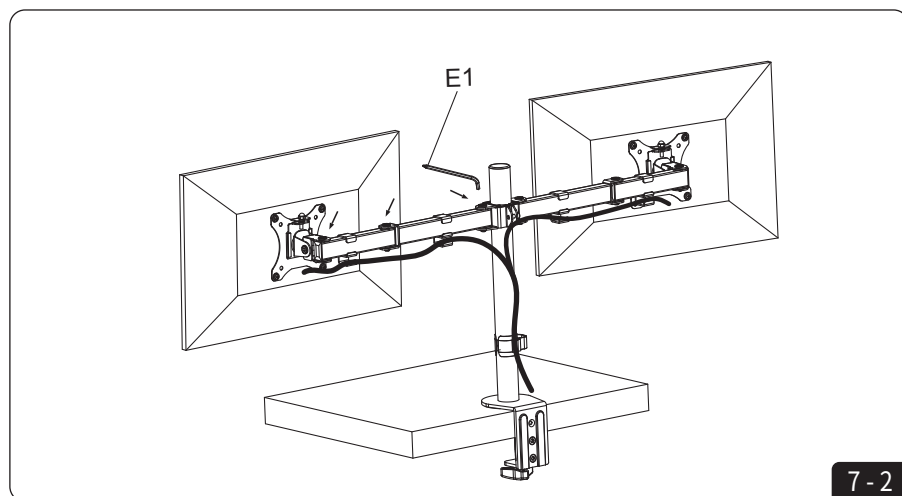
6-1

## STEP 7 Make adjustments

1. Use the supplied Allen wrench(E1) to tighten the screw to prevent mointonr tilting



2. Use the supplied Allen wrench(E1) to adjust the tightness of the joint.



# Welcome to the EleTab family!

Thank you for choosing EleTab products. At EleTab, we truly care about people like you: regular working people who strive every day to chive a goal, and to make what positive influence they can in the world with their lives.

That's why we bring this stand to your life, more health and higher productivity. Whatever it is that leads you to us, we're happy that you're here and we want you to know that we understand one thing: you need a better way to work, a better way to play. Creating an ergonomic work and gaming environment can really make a huge difference.

keeping on winning.

EleTab Team



---

## Feedback



Love it? Hate it?

Let us know with a customer review.

Our aim has been to create a stand that has it all— it's attractive, balanced, affordable, and easy to assemble. Does this item meet your expectations? We encourage you to write a review sharing your experience.

---

We stand behind our products, and we want you to feel secure knowing that no matter what happens our dedicated support team can offer immediate assistance with rapid response times.



[www.eletabergo.com](http://www.eletabergo.com)



[service@eletabergo.com](mailto:service@eletabergo.com)



[www.facebook.com/EleTabus](https://www.facebook.com/EleTabus)