

# SOCK DRAWER HEROES

Dedicated to Gender Euphoria

## **Visual Story**

Visual stories are used to prepare a person for, and increase the predictability of, a new environment or situation.

This helps bring familiarity to a process and reduce anxiety and stress. Visual stories are written in an easy-read format and use pictures to provide greater accessibility for everyone.

# What is a Visual Story?

- Visual stories help me to become more familiar with a new environment, or situation before I attend
- Visual stories are written in an easy-read format and use pictures to provide greater accessibility for everyone
- Visual stories give me more information so that I know what to expect
- Knowing what to expect can help to reduce my anxiety and stress

## **This visual story:**

- Gives me information to help me prepare for my visit to Sock Drawer Heroes
- Can be used to assist communication
- Can be printed to use on the day
- If I want to print the visual story, I will have to do it before visit Sock Drawer Heroes

# Sock Drawer Heroes Visual Story contents

- About Sock Drawer Heroes
- About sensory-friendly times
- What to bring
- Where to find Sock Drawer Heroes
- Accessible parking
- Parking
- Using public transport
- Entering Sock Drawer Heroes
- What I will see at Sock Drawer Heroes
- Toilets
- Eating
- Making a purchase
- Who to ask for help if I need
- Leaving Sock Drawer Heroes
- Feedback

## **Contents list:**

- This is Sock Drawer Heroes' visual story contents list
- A contents list tells me what is inside a written document
- I can use the contents list to help me find information more easily
- I can use this contents list to help me plan my visit to Sock Drawer Heroes

# About Sock Drawer Heroes

Sock Drawer Heroes is a gender expression store for the trans, gender diverse and queer community based in Sydney, Australia.

They have a website where I can shop. They also have a physical store that I can visit on certain days, where I can:

- Try on products and get help from staff
- Purchase products that help me express myself
- Get other resources and information about gender expression

These days are called 'Shop Days'. I can find out when Shop Days are on here:

<https://sockdrawerheroes.com/pages/event-list>

# About sensory-friendly times

During Shop Days, Sock Drawer Heroes have special sensory-friendly time.

This means that music and lighting are turned down.

There is also a Chill-out Zone for anyone who needs a place to retreat. The Chill-out Zone has low lighting, soft cushions and fidget toys, and is available throughout the whole day.

This is to help reduce anxiety and sensory overwhelm for those in our community who may benefit from a less overwhelming environment.

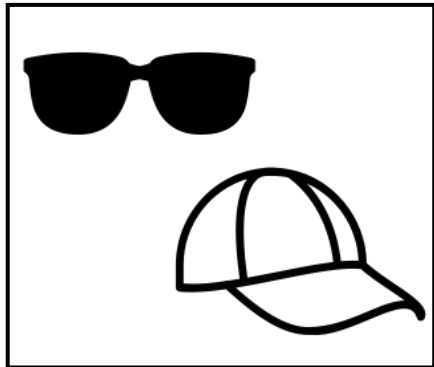
**Sensory-friendly time are from 10am-11am on Saturday Shop Days.**

# What to bring to Sock Drawer Heroes

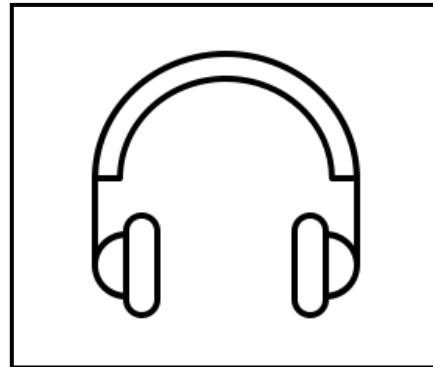
Sometimes it is busy, noisy, bright and loud at Sock Drawer Heroes.

I can bring thing to help me enjoy the day.

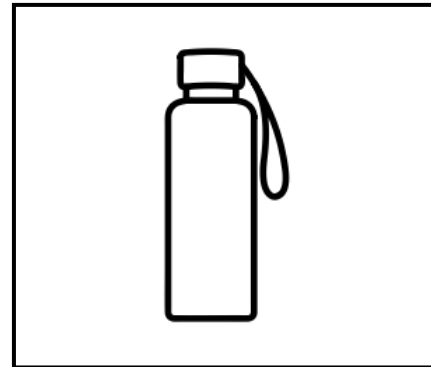
Things I might want to bring:



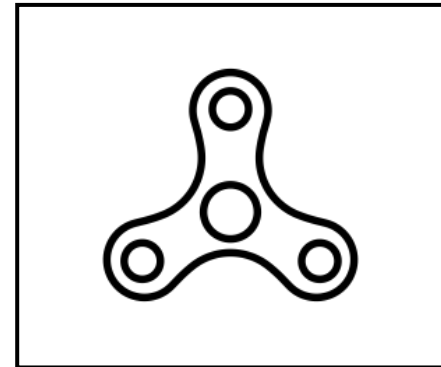
Sunglasses + hat



Headphones



Water bottle



Sensory tools

# Where to find Sock Drawer Heroes

Sock Drawer Heroes is located in Sydney at:  
480 Parramatta Rd, Petersham, NSW 2049

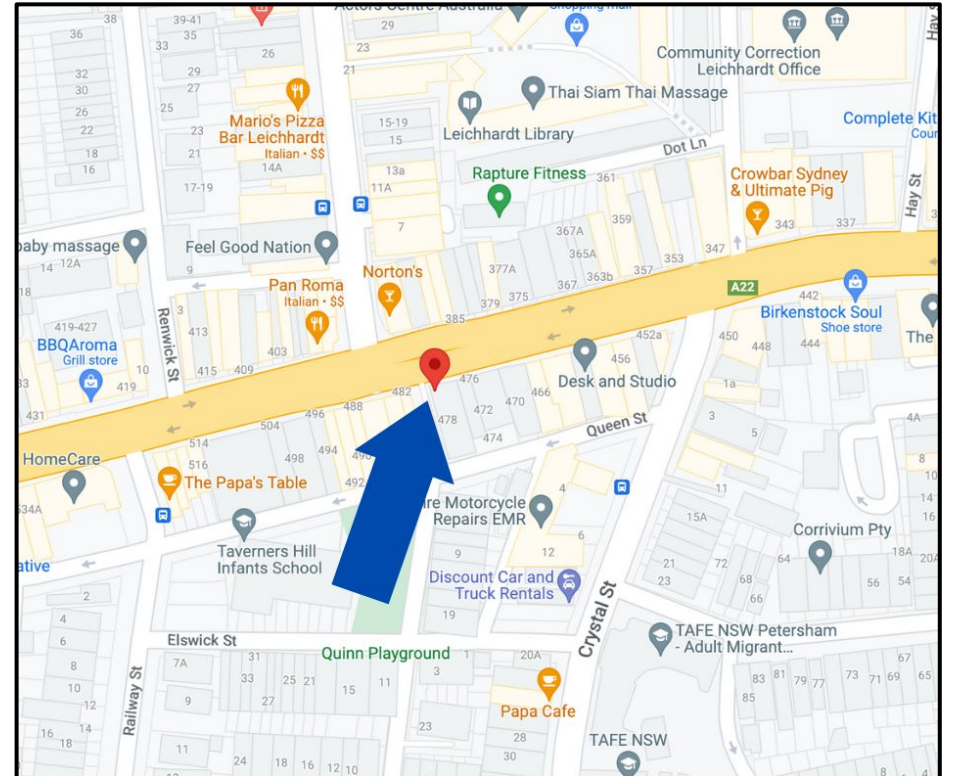
The Sock Drawer Heroes physical shop is open:

- First Thursday of the month, 4-8pm
- Third Saturday of the month, 10am-4pm.

Sensory friendly sessions are at 10am-11am  
during Saturday Shop Days.

For more info:

<https://sockdrawerheroes.com/pages/event-list>



Sock Drawer Heroes is located at  
480 Parramatta Rd, Petersham, NSW  
2049

# Accessible Parking



Accessible parking spaces



Laneway to front door

If I have a government issued accessible parking permit I can park in one of the council provided accessible spaces located on Queen St in Petersham. This is behind the Sock Drawer Heroes shop.

- After I park, there is easy access to the front door via the laneway that goes to Parramatta Road
- I will go through the laneway and turn right
- On the first shop on the right, I will see a sign that says 'SDH HQ'
- When I see this sign I will know this is the right building and can go inside



# Parking



Street parking spaces



Laneway to SDH shop

I can park in a council provided parking space located on Queen St in Petersham. This is behind the Sock Drawer Heroes building.

- After I park, there is easy access to the front door via the laneway that goes to Parramatta Road
- I will go through the laneway and turn right
- On the first shop on the right, I will see a sign that says 'SDH HQ'
- When I see this sign I will know this is the right building and can go inside

# Using public transport

## **Bus**

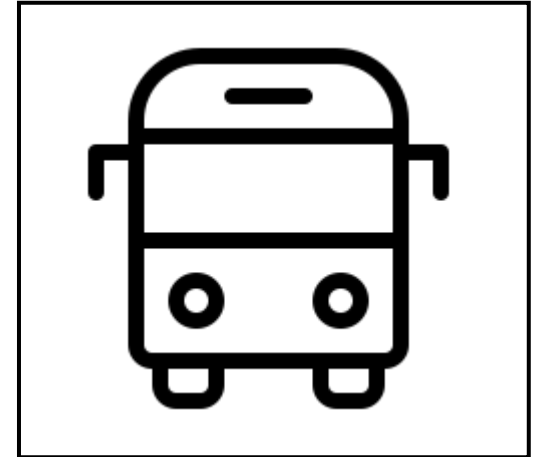
I can travel to Sock Drawer Heroes on the bus

Buses that stop near Sock Drawer Heroes on Parramatta Road are:

413, 461X, 480, 483

Buses that stop near Sock Drawer Heroes on Norton street are:

438N, 440, 444



I can travel by public transport

## **Train**

I can travel to Sock Drawer Heroes on the train

The closest train station is Petersham. It has a lift

# Entering Sock Drawer Heroes

- I will enter Sock Drawer Heroes from Parramatta Road
- There is a black and white sign hanging from the awning in front of the Sock Drawer Heroes shop that says 'SDH HQ'
- There is a rainbow sign hanging above the front windows of Sock Drawer Heroes that says 'Sock Drawer Heroes'
- I will know I am at Sock Drawer Heroes when I see these signs



SDH HQ sign



Rainbow Sock Drawer Heroes sign



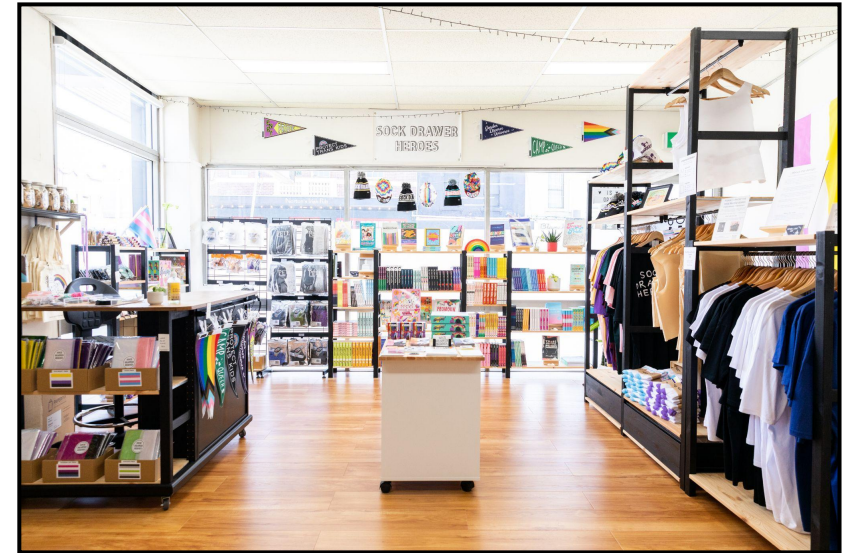
Sock Drawer Heroes front door

# What I will see at Sock Drawer Heroes

- I can see many different gender affirming things at Sock Drawer Heroes
- I will see chest binders, underwear, packers, clothing, books, games, flags, stickers, and tape
- There are packers in the drawers that I can ask to see if I would like
- It is ok to ask for help, the staff are there to help me find the right products for me

The next time I visit, the items on display may have moved or be new and different.

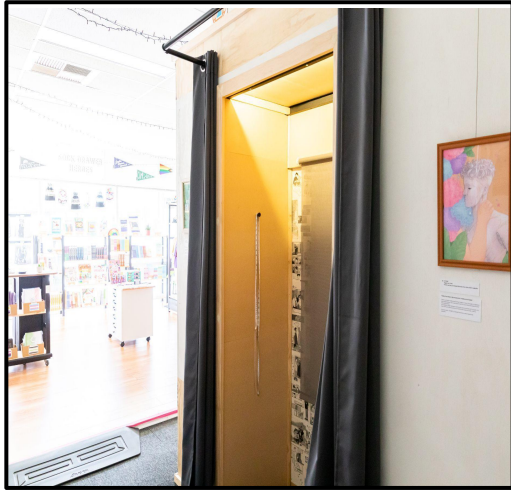
If I am unsure and need help I can ask the staff to help me find what I need.



Example of display



# What I will see at Sock Drawer Heroes



Change room



Light switch



Mirror

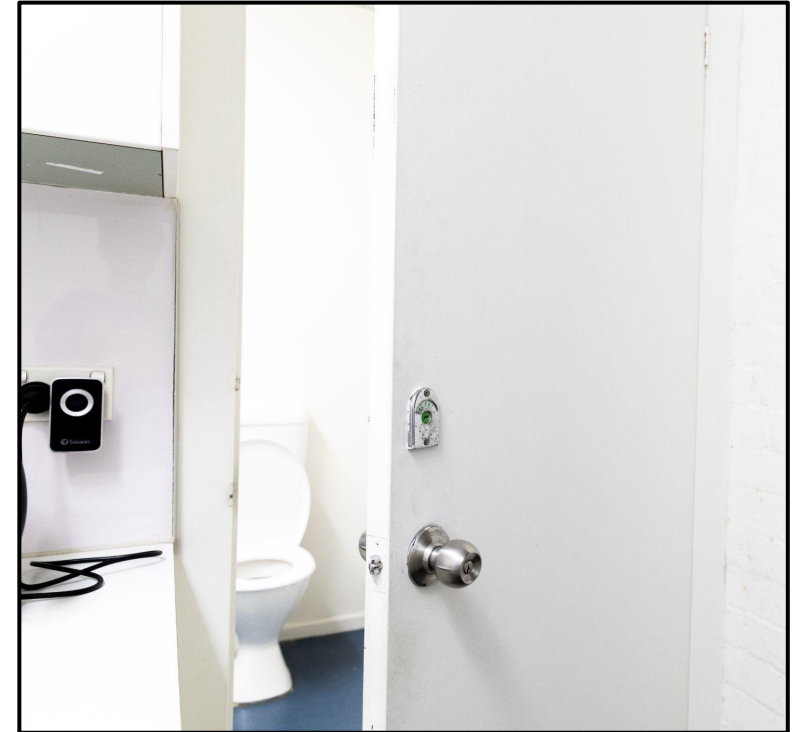
- There is a change room at Sock Drawer Heroes
- I can try on binders and underwear in here
- I can turn off the light or leave it on if I need
- I can cover the mirror if I would like
- I can ask for help if I need

# Toilets at Sock Drawer Heroes

There is an all-gender toilet towards the back of the Sock Drawer Heroes shop.

I will need to use 3 small stairs to access the toilet.

I can ask the Sock Drawer Heroes staff to show me where the toilet is if I need.



Sock Drawer Heroes toilet

# Eating at Sock Drawer Heroes

I must not eat inside of Sock Drawer Heroes

This will help keep the displays and artwork safe

It is ok to have a water bottle to drink inside of Sock Drawer Heroes

I can eat outside of Sock Drawer Heroes if I want to



No eating inside

# Making a purchase at Sock Drawer Heroes

If I have money I can buy things at Sock Drawer Heroes



Sock Drawer Heroes counter



# Who to ask for help if I need

I can ask the Sock Drawer Heroes staff for help if I need.

Sock Drawer heroes staff wear a black t-shirt with the words 'Sock Drawer Heroes' on the back and icons of a sock, chest of drawers and person wearing a cape on the front.

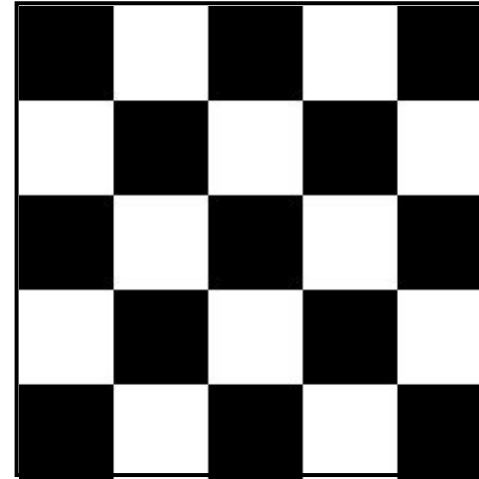


I can ask staff for help

# Leaving Sock Drawer Heroes



Leaving SDH



Finished

- When I am finished at Sock Drawer Heroes I can leave
- If I am with a group or my family I should wait for them to be finished too
- I can visit Sock Drawer Heroes another day if I would like

# Thank you and feedback



If I have any feedback or questions I can  
email **hello@sockdrawerheroes.com**