

**High Lumen** T5 LED Tube Series  
First and Only Patented True T5 HE&HO LED replacement tubes

### ◆ Specifications:

- 130lm/w- **160 Lumens Per Watt**
- Input Voltage: AC100-277V 50/60Hz
- Power: 9W~24W
- Color temperature: 3000K 4000K 5000K 6000K
- Color Rendering Index: >82
- Power Factor: >0.93
- THD<20%
- LED Chip:SMD 2835
- Beam Angle: 120°
- Working Temperature: -20~40°C
- Storage Temp: -40~80°C
- Environment Humidity: <95%
- Lifespan: >5,4000hrs for L70
- 5 Years Warranty
- On-off times:>100,000 Times
- No flickering (FI =< 0.02)
- RoHS compliant, CE Certified, cUL UL approval, DLC List
- Rotatable end cap: Available



**T5 1200mm 24W replace HO 54W fluorescent**



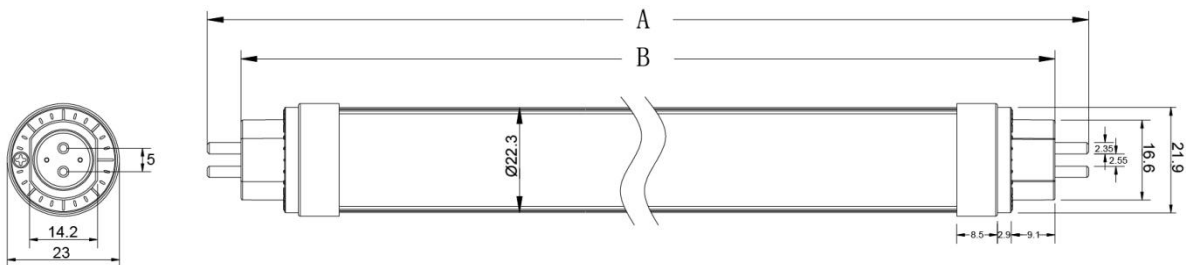
## ◆ Product Features:

- Pretty and elegant appearance, patented product.
- Directly install on the existing T5 fixture.
- Colorful metal rings available,Blue,Green,Silver,Red and Gold.
- G5 fixed or rotating end cap is available.
- 6063 Aluminum shell,Japan PC cover,long lifespan.
- OEM service available, Laser print customer LOGO and customer exclusive lable.
- Mainly used in factory,supermarket,carpark,hospital and school.

Model No.	Length	Power	Lumen(lm)	Size(mm)
ML - TS - 2ft - 9W	2ft	9W	1170	Φ22*L22
ML - TS - 4ft - 15W	4ft	15W	1950	Φ22*L9%
ML - TS - 4ft - 18W	4ft	18W	2340	Φ22*L&
ML - TS - 4ft - 24W	4ft	24W	<del>3120</del> 3,840	Φ22*L')

Remarks: 3000K ,4000K available,Only change "W" to "N","L" in Model No.

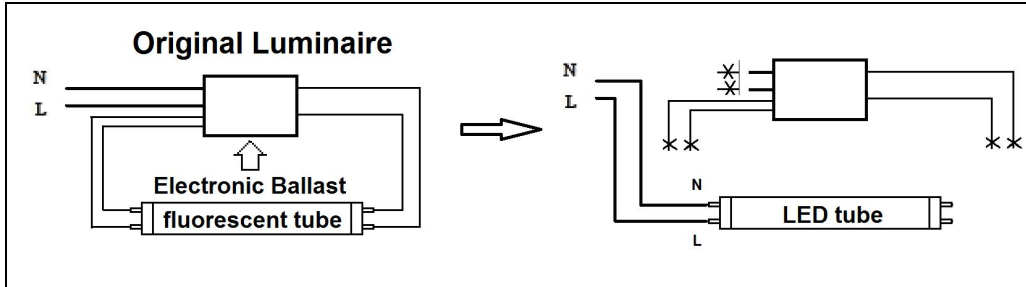
## ◆ Drawing of Products



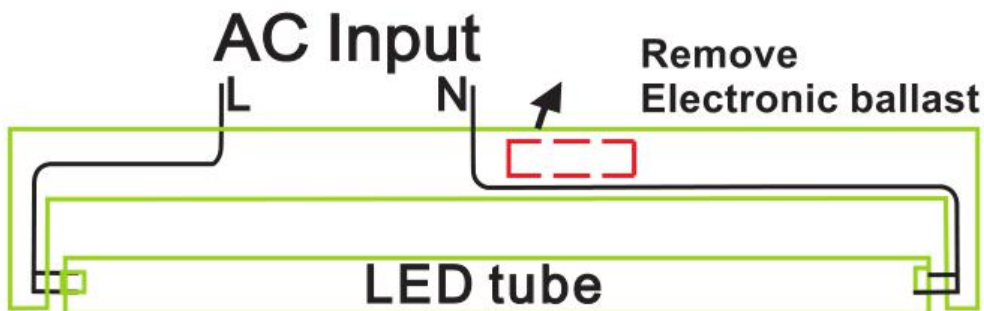
Length	2feet	3feet	4feet	5feet
A	22.13"	33.94"	45.75"	57.56"
B	21.57"	33.39"	45.2"	57"

## ◆ Installation

### Single End Power input:



### Double Ends Power input:



#### Installation Steps:

1. Turn off the electricity supply before installation.
2. Make sure the circuit is as above. Please follow the illustrated steps to revise the circuit as above.
3. By-pass the ballast and starter where applicable.
4. Please install the LED tubes in standard medium bi-pin lamp holder.
5. Designate one side of the fixtures lamp sockets as the "L N" and mark for future reference.
6. Make sure Supply wire Black and White leads are matching Lampholder Black and White leads properly. And all connection is made by wire nuts.
7. Install led tube light in fixture matching the L side of the lamp to the "LIVE END" side of the fixture. After having fixed it, turn the tube 90°, ensure that the tube is well installed to the lamp fixture".
8. "After modification completes, then affix the Lamping Replacement Marking label and cautionary label, located this where visible during re-lamping on the retrofitted luminaire."

