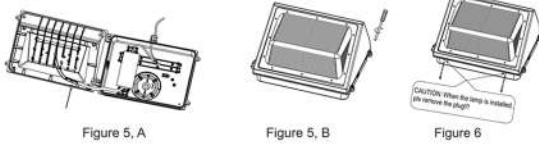


WALL PACK LIGHT INSTALLATION GUIDE

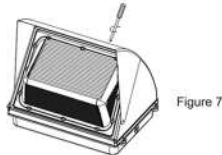


5. Connect the quick connect terminal, then screw the fixture with bottom plate. (Figure 5, A & B)

6. Caution: When the product is installed, pls remove the plug at the drain hole. (Figure 6)



7. Please subject to the installation steps according to the actual products purchased. Follow the below additional installation steps if the product is equipped with a reflector (Take the SWP01 series for example). When metal reflector is equipped, pls lock it on the luminaire with screws. (Figure 7)



Standard wire:

L/live wire: Black/Brown;
N/null wire: White/Blue;
Ground wire: Green/Yellow-green.

Warning: During grounding, make sure the earth wire of the driver and lamp housing are connected together with the earth wire of the local power supply.

Warning/Avertissement:

MIN 75 °C SUPPLY CONDUCTOR
THIS PRODUCT MUST BE INSTALLED IN ACCORDANCE WITH THE APPLICABLE INSTALLATION CODE BY A PERSON FAMILIAR WITH THE CONSTRUCTION AND OPERATION OF THE PRODUCT AND THE HAZARDS INVOLVED

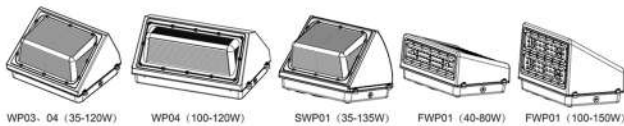
Caution:

1. Can not use the electric generator to test the LED lamp.
2. Please abide by related country, regional and local law and regulations when install this fixture.
3. Please don't install the fixture when raining to lower the risk of electric shock and avoid the failure.

Note:

1. To avoid possibility of electrical shock or fire, the installation personnel must have professional electric knowledge.
2. Please wear gloves to avoid injury before installation.
3. If any smoke or spark of the wire happened, please turn off the power immediately and notify relevant personnel.
4. This fixture is available in outdoor usage, but the distance from fixture to ground should be more than 2m.

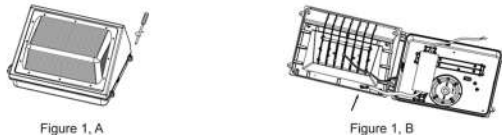
This installation instruction applies to the following products. Although the products vary in appearance, their installation steps are the same:



The installation of the product can be used when it is marked with "√".

Installation I:

1. Take out the light, and loosen the screws on the cover and take apart the fixture by the screwdriver. Pull off the quick connect terminal vigorously. (Figure 1, A & B)

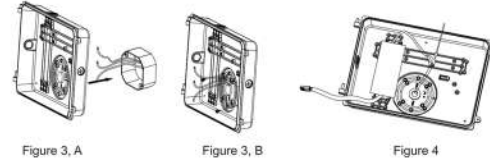


2. Drill an installation holes at the bottle of light, paste the EVA mat. (Figure 2, A & B)



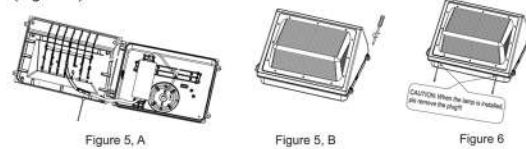
3. Loosen the plug on the bottom plate, then put the wiring through the hole, screw the bottom cover with junction box on the wall. (Figure 3, A & B)

4. Make wiring connections per "Electrical Connections" section and make sure the good wire protection. (Figure 4)



5. Connect the quick connect terminal, then screw the fixture with bottom plate. (Figure 5, A & B)

6. Caution: When the product is installed, pls remove the plug at the drain hole. (Figure 6)

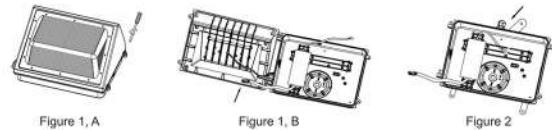


7. Please subject to the installation steps according to the actual products purchased. Follow the below additional installation steps if the product is equipped with a reflector (Take the SWP01 series for example). When metal reflector is equipped, pls lock it on the luminaire with screws. (Figure 7)



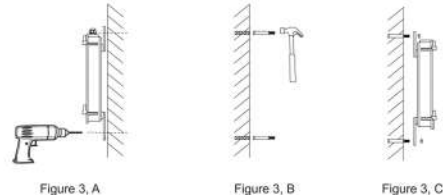
Installation II:

1. Take out the light, and loosen the screws on the cover and take apart the fixture by the screwdriver. Pull off the quick connect terminal vigorously. (Figure 1, A & B)
2. Choose an appropriate connection hole according to your requirements. Loosen the plug, and then fit the waterproof connector from the accessories; rotate the three mounting kits to the proper angle. (Figure 2)

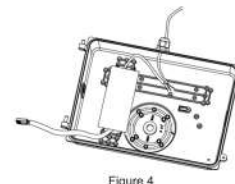


3. Put the fixture on the wall, make three marks according to the three mounting kits, then drill three holes for them. (Figure 3, A)

Get rubber plugs into the holes, match the three mounting kits to the rubber plugs, then fix the fixture on the wall by screws with the spring washer and plain cushion. (Figure 3, B & C)



4. After installing the bottom plate, pull the outside wiring into the fixture by the waterproof connector, and tighten the screws on the connector. Make wiring connections per "Electrical Connections" section and make sure the good wire protection. (Figure 4)



1050 Crown Pointe Parkway Suite 500 Atlanta, GA 30338

404.870.3543

ecoledmart.com

sales@ecoledmart.com