

MOSQUITO KILLER TRAP, INSECT REPELLENT

PP2212

PowerPac®

1 YEAR WARRANTY

COV AREA: 30m²



**ULTRAVIOLET TUBE
1 x 6 WATTS**



Model No.: PP2212



AN ASME-LIANHE ZAOBAO AWARD

新加坡金字品牌奖

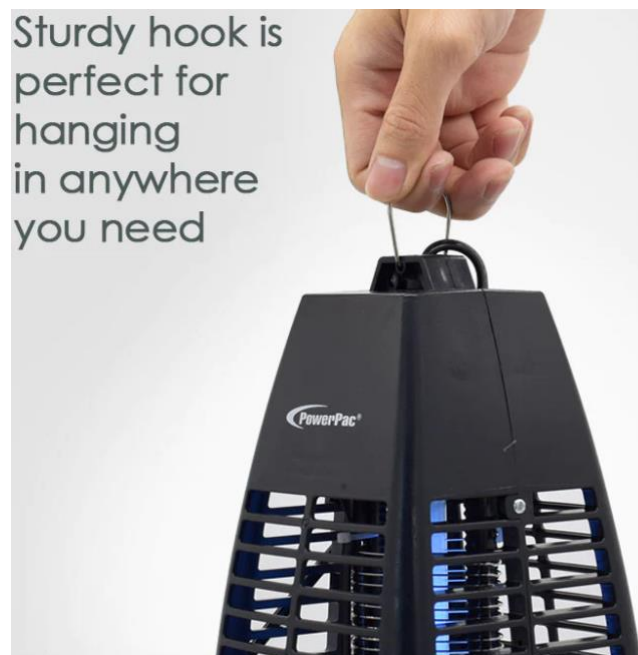
Singapore
Prestige
Brand Award
2020/21

Winner, SPBA - Established Brands

The Mosquito Killer Trap, Insect Repellent PP2212, is the largest member of its range and covers an area of 30 square metres, which is ideal for being placed unobtrusively in a larger bedroom. The other two appliances in this range, which appear similar in design and function include PP2210, covering 15 square metres, and PP2211, covering the same area but is slightly smaller in design.

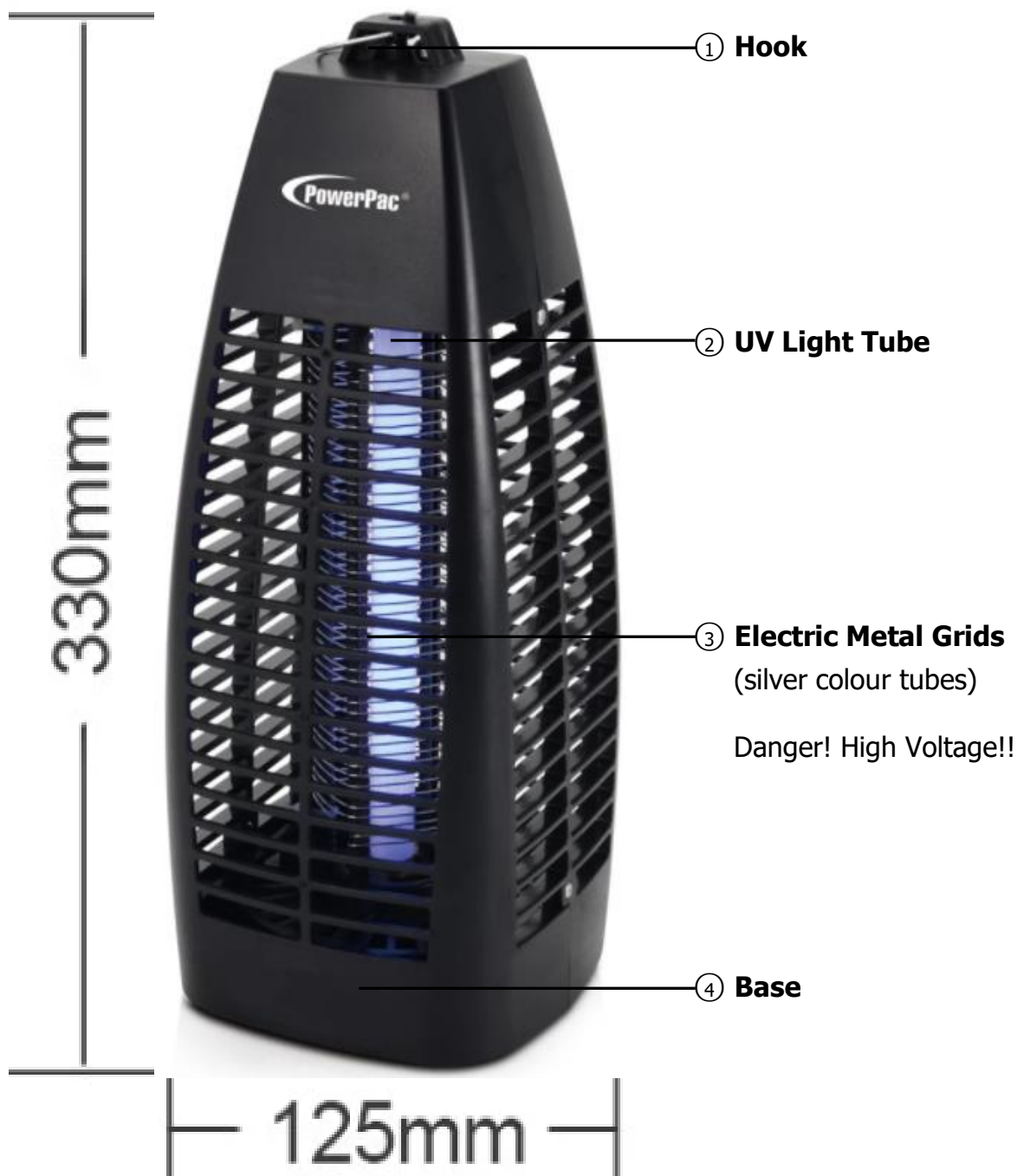
This appliance is used to attract flying insects such as flies, moths & mosquitoes. When these pests encounter the high voltage electric grids, they will be electrocuted instantly. The UV-light tubes are completely harmless to humans and pets. It does not emit fumes, odour or harmful chemicals, unlike insecticide sprays, which can be deadly to pets and young children, or anyone allergic to the chemicals contained in it.

The Mosquito Killer Trap, Insect Repellent PP2212 is efficient as well as aesthetically pleasing. Its boxy shape, which is somewhat wider in the centre and tapers upwards, allows it to be placed in a corner of a room. The smooth, black plastic outer cover protects humans from touching the high tension grids. The appliance is suitable for indoor use and should either be placed on a dry, horizontal surface or from the Hook attached to the top of the appliance, suspended from ceilings, away from small children and pets for their safety.



LIST OF COMPONENTS

1. Hook
2. UV Light Tube (6W) – single (4225)
3. Electric Metal Grids
4. Base



Warnings

ATTENTION :

Read this booklet carefully as it contains important instructions for a safe installation, use and maintenance.

Important instructions to be kept for future reference.

The following basic precautions should always be followed when using electrical appliances:

1. Read all instructions before using the appliance.

The Appliance

2. This appliance must be used only for the purpose it was expressly designed; any use NOT complying with the instructions contained in the manual is considered inappropriate and dangerous. The manufacturer is NOT responsible for possible damages caused by the inappropriate and/or unreasonable use.
3. The installation/assembly of the appliance will be made in accordance with the indications of the manufacturer. A wrong procedure may cause damages to persons, animals or objects, for which the manufacturer cannot be considered responsible.
4. Before use, check the integrity of the appliance and power cable. DO NOT operate the appliance at all when the Electric Metal Grids or UV light tube is damaged. In case you are not sure, contact a qualified person. If the UV light tube is damaged, replace it with a new (identical) one. If the Electric Metal Grids or power cable is damaged, it must be replaced by the manufacturer / service agent or a qualified technician in order to avoid a shock hazard.
5. Before powering the appliance make sure the rating (voltage and frequency) corresponding to the grid and the socket is suitable for the plug of the appliance, and that the wall socket is properly grounded.
6. Avoid the use of adapters and/or extension cables; if their use is absolutely necessary, use only materials in compliance with the current safety regulations and according to the electrical parameters of the adapters.
7. The appliance must NOT be switched on using external timers and/or other remote control appliances which are not specified in this manual.
8. Only use original components & accessories (e.g. UV Light Tubes) provided by the manufacturer. Any non-original components & accessories made by other manufacturers or by the same manufacturer but for other models of the same capacity or otherwise, may cause injuries to persons or damage to the appliance. Doing so will void the warranty and may cause serious injury.
9. The packing materials (plastic bags, expanded polystyrene, etc.) must be kept out of the reach of children or disabled persons since they represent potential sources of danger.

Location

10. This appliance is NOT suitable to be used or stored near heat sources (open flame, ovens, heaters, stoves, etc.) and/or in an explosive environment (in the presence of flammable substances such as gas, vapour, mist or dust, in atmospheric conditions when, after ignition, the combustion is spread in the air). Items containing these substances should never be placed in the appliance, and never be used to clean the appliance to avert the risk of fire or explosion.
11. Place the appliance at a proper distance from the objects or surrounding walls making sure that its functioning will NOT cause accidental damages. There should be at least 30cm of free space from the back, left & right sides, and the top of the appliance. Never put things on top of the appliance. The appliance should NOT be placed on a surface, or in the vicinity of objects, which can be damaged by heat such as carpets or plastics. Never use the appliance near curtains or textiles. If the appliance is operated on wooden furniture, use a protective pad to prevent damage to delicate finishes.
12. Avoid placing the power cable on abrasive or sharp surfaces or in positions where it can be damaged easily. Avoid placing heavy objects on the cable. The cable must NOT be placed under carpets, or covered with throw rugs, runners or similar. Arrange the cable away from the high traffic area, and where it will NOT be tripped over. DO NOT pull or carry the appliance by the cable.
13. DO NOT use or store the appliance outdoors. Store and use the appliance only indoors, or in any case, protected from weathering such as rain, direct radiation of the sun and dust.

Operation

14. If you are using the appliance for the first time, you should:
 - a. Place and use the appliance on a horizontal, stable and heat-resistant surface, or hang the appliance in the air using the Hook. Ensure that the appliance is completely dry before use and standing at an upright position before switching on the appliance.
 - b. Make sure to remove any label or protective sheet which may prevent its proper functioning.

DO NOT:

- cover the appliance during functioning;
- touch the internal high voltage grid of the appliance while it is operating with your fingers, any other part of your body, or any external object, to prevent electric shock or voltage discharge, which may also lead to a fire, as the appliance operates;
- remove any fixed part of the appliance, nor adjust any internal or external component of the appliance, to prevent electric shock or voltage discharge, which may also lead to a fire, as the appliance operates;

- place or use any electrical appliances inside the appliance;
 - move the appliance while the appliance is switched on and connected to the wall socket;
 - press the ON/OFF Switch too forcefully so as to avoid any damage;
 - leave the appliance unsupervised during operation.
15. During operation, DO NOT touch the appliance with wet body parts, and it is recommended to have between you and the standing surface, an isolating element (for example, wearing shoes with rubber soles).
 16. DO NOT soak the appliance in water or other liquids, wash it under the tap, or let any liquid flow into the internal casing of the appliance to prevent electric shock. In case of accidental fall in water or flooding etc. where water has entered the appliance, DO NOT try to take it out, but first of all switch the ON/OFF Switch OFF and unplug the power cable from the wall socket immediately.
 17. Switch the appliance OFF before unplugging the appliance. Plug and unplug the power cable firmly holding it with dry hands. Always unplug the power cable before changing UV light tubes, if it is NOT used for a long period and before storing, cleaning or performing any maintenance operation.
 18. In case of malfunction or anomaly during the functioning such as smoke coming out of the appliance, switch the appliance off immediately, switch the appliance OFF and check the cause of the anomaly, if possible, with the support of a qualified person.
 19. This appliance is NOT intended for commercial use but to be used in households and similar applications, such as
 - Staff kitchen areas in shops, offices and other working environments;
 - By clients in dormitories, hotels, motels and other residential environments;
 - Bed and breakfast type environments.
 20. This appliance can be used by children aged from 8 years and above and persons with reduced physical, sensory or mental capabilities or lack of experience and knowledge if they have been given supervision or instruction concerning use of the appliance in a safe way and understand the hazards involved. Children shall NOT play with the appliance. Cleaning and user maintenance shall NOT be made by children unless they are older than 8 and supervised. Keep the appliance and its cable out of reach of children less than 8 years old.
 21. Save these instructions.

How to clean

1. Switch off the appliance and unplug the socket from the wall socket before cleaning or conducting maintenance.
2. Wipe the exterior of the appliance using a soft, cloth or sponge. DO NOT use abrasive scouring pads or powders.
3. Use a suitable brush to clear the bodies of insects sticking to the metal grids.
4. Rotate the Base (which serves as the Mosquito Tray) counterclockwise to separate it from the rest of the appliance. Invert it to remove the bodies of insects collected there. After cleaning, attach the Base back into the appliance by rotating it clockwise.



5. DO NOT soak the appliance in water or other liquids, wash it under the tap, or let any liquid flow into the internal casing of the appliance to prevent electric shock
6. After cleaning, make sure that all surfaces are dry before restarting the appliance.

ENVIRONMENTAL TIP

This appliance, along with all other electronic appliances, should, when it is no longer capable of functioning, be disposed with the least possible environmental damage according to the local regulations in your area. In most cases you can discard the appliance at your local recycling centre.

DISPOSAL: Do not dispose this appliance as unsorted municipal waste. Collection of such waste separately for special treatment is necessary.

Product Specification



SPECIFICATION

MODEL	PP2212
VOLTAGE	220 – 240 V ~50 – 60 Hz
POWER	6 W
COVERAGE AREA	30 m ²
DIMENSIONS (L x W x H)	12.5 cm x 12.5 cm x 33 cm
UV TUBE	6 W (4225)

WARRANTY

Warranty Conditions

1. This warranty provides against defective materials and manufacturing faults throughout for one year from the date of purchase of the appliance.
2. This warranty also does not cover normal wear and tear, replacement of consumable materials and accessories, and the cost of maintenance of the appliance.
3. This warranty does not cover the repair or replacement of part/s damaged by misuse, accidents, negligence, alterations, or modifications in any way, or repairs done by any repair organisation without the prior consent of PowerPac Electrical Pte Ltd.
4. Repair and service are to be performed at: 5 Changi South Lane #03-01 Singapore 486045. A transport fee will be charged for personal doorstep service.
5. The original purchaser of the appliance must furnish proof of purchase to our Service Centre with the email or number as registered during submission of warranty when this appliance is sent for repair/service. Failure to do so may delay the receipt of said repair/service by the customer.
6. Under no circumstances whatsoever shall the serial number be erased, defaced or altered by the customer and/or his representatives, or the dealer and/or his agents. Failure to ensure this shall invalidate the warranty.
7. This warranty is deemed to be void if the defect is caused by the attack of household pests, fire, lightning, natural disasters, pollution, abnormal voltage or the usage of generators.
8. This warranty is valid in Singapore only.
9. This warranty will be honoured subject to the customer's registration of the warranty inclusive of original invoice or valid purchase receipt. Failure to present these documents will result in denial of service. However, if the customer still requests that the defective appliance be repaired, PowerPac Electrical Pte Ltd may, at its discretion, repair the appliance but impose a labour charge, as well as the costs of the replacement parts, to be borne solely by the customer.
10. Please refer to the attached picture for the location of one of our appliance's serial number, as an example.



Please complete the on-line registration warranty form available on our website. There is no further requirement to send us any hard copy as part of our efforts to save the environment.

In accordance with the terms and conditions of this limited warranty as stated above, PowerPac Electrical Pte Ltd, at its expense shall provide free services for the appliance within the warranty period from its date of purchase from our Authorised dealers.