



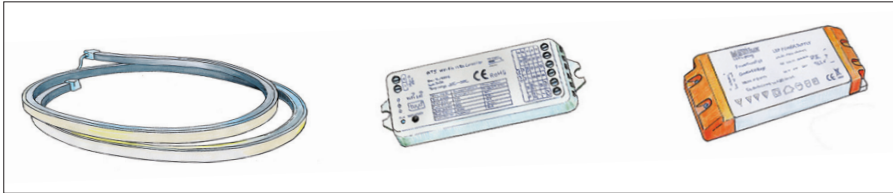
# SPLASH12 LED Strip Installation Guide

A complete solution  
created by us  
to make it easy  
for you



## LEDspace SPLASH12 Seamless LED Strip

Thank you for choosing this LEDSpace product. Your basic components are as follows:



Seamless SPLASH12 LED strip, made to measure, with sealed end caps and cable tail. Maxilux Wi-Fi/RF interface (if required), Maxilux LED power supply (plug and mains power lead not supplied). You may have also ordered other components, mounting profiles, etc.

### Safety first

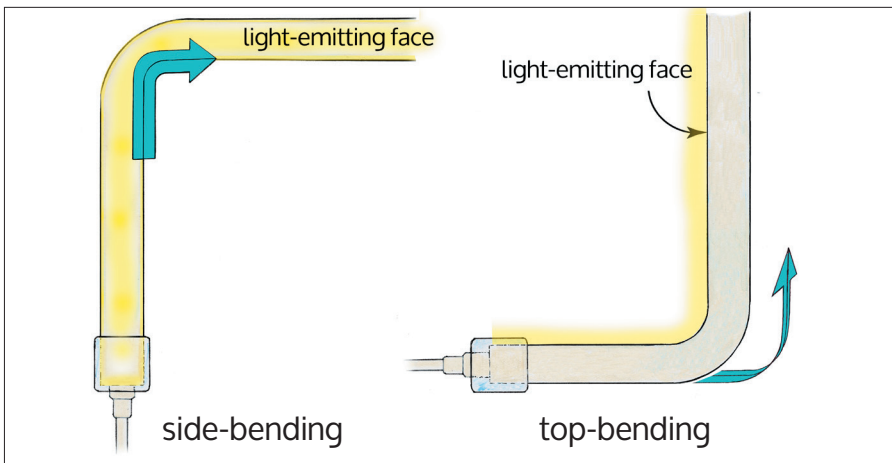
Always test the LED strip BEFORE installing.

NEVER connect LED strip directly to a 240V mains or wall socket. ALWAYS connect via LED power supply.

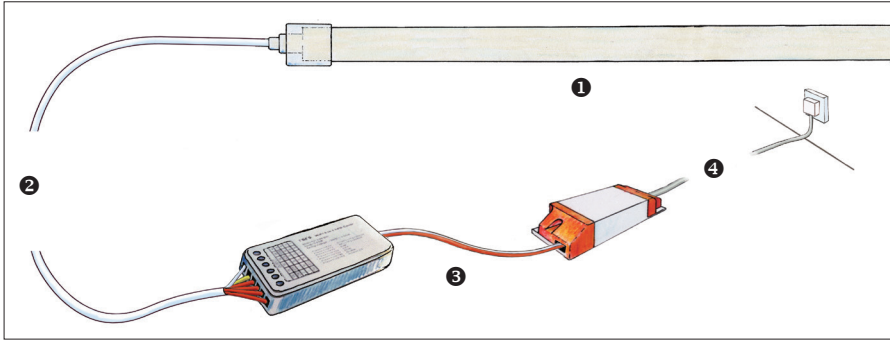
Twisting, treading on, or pressing the LED strip too hard when installing may impede its performance or prevent it from working at all.

This LED strip is for indoor or outdoor use and may be used in bathrooms or other wet areas. It is not, however, suitable for submersion in water.

*NB: Please contact us within four days of receipt if, after testing, you find any faults with the equipment.*



Splash12 waterproof LED strip comes in two flexible types: 'side-bending' and 'top-bending', based on your design and order choice.



**Putting your LEDSpace lighting system together** – Numbers refer to installation steps

Different surfaces will require different fixings. Generally, we suggest fixing SPLASH12 using our rigid or flexible mounting profiles, or clips. These may be fixed by drilling and screwing or by using a grip or impact adhesive, silicone glue or other compatible bonding agent.



**1** Fix or bond your rigid or flexible mounting channel or mounting clips to the mounting surface, using screws, silicon or adhesive.

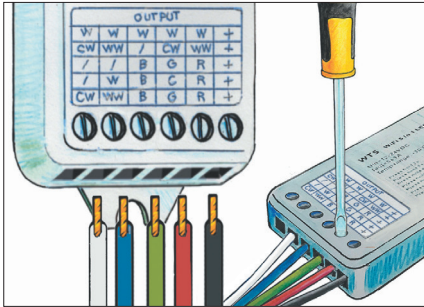


Leave enough space at the end, as caps sit outside the end of the mounting channels. Gently press the LED strip into the channel or mounting clips.



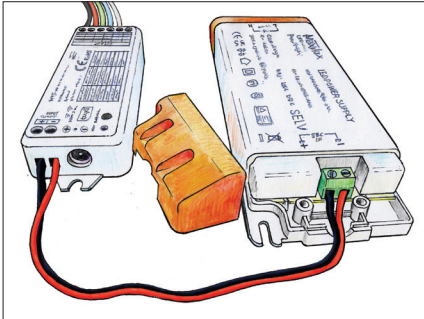


## 2 Wiring the cable to the interface



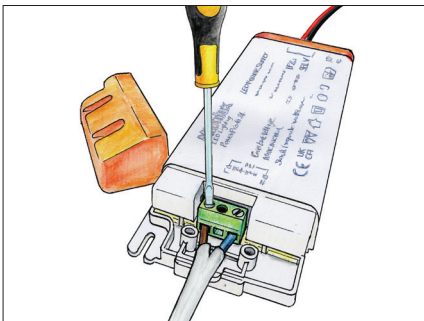
- depending on your choice of strip, you will have either 2, 3 or 5 cables. Wire to interface using instructions provided in the box.

## 3 Wiring the power supply to the interface



- wire 24V terminals on the power supply to the 24V terminals on the interface.

## 4 Wiring the power supply to the mains power lead



- strip mains cable wires
- unscrew terminal screws at 220–240V input end

- insert wires: brown to live terminal and blue to neutral
- retighten screws and check for secure connection.

### Controlling your LED strip lighting

Control with a remote control, multi-zone wall switch, smartphone or smart speaker. Scan the QR code below to download the app.



Your interface will need to be programmed. Please refer to the instructions supplied with the interface.

### Troubleshooting, data sheets, detailed instructions and tips

Please scan the following QR code, which will take you to our help page.



[ledspace.co.uk/pack-help](https://ledspace.co.uk/pack-help)

support@ledspace.co.uk • 02477 395995 • 16 Falkland Close, Coventry CV4 8AU

