

Ecophon Solo™ Square

Ecophon Solo™ Square is an acoustic solution, primarily when it is not possible to install a wall-to-wall ceiling. Solo Square is suitable in buildings where the room volume could be maintained or as an option when TABS (Thermally Activated Building System) is selected as a cooling system.

Solo Square is an unframed free hanging unit offering a high degree of design possibilities both regarding colour choice and suspension systems. The three different suspension systems using Adjustable wire hangers, One-point fixing (patent) or Absorber brackets in combination with the engineered Connect Absorber anchor (patent) give opportunities to create several layers and angles.

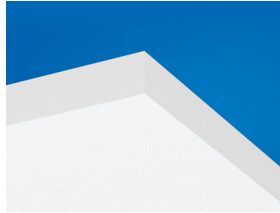
The Solo Square panel is available in size 1200x1200x40 mm with a weight of 6,5 kg. The panel is manufactured from high density glass wool, with Akutex™ FT surface on both sides. The edges are straight cut and painted.



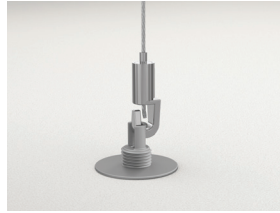
SYSTEM RANGE



Size, mm	1200x1200
Special Fixing	•
Thickness	40
Inst. Diag.	M402



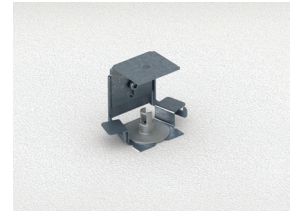
Solo panel



Suspension with Connect Adjustable wire hanger and Connect Absorber



Suspension with One-point fixing



Suspension with Connect Adjustable wire hanger and Connect Absorber



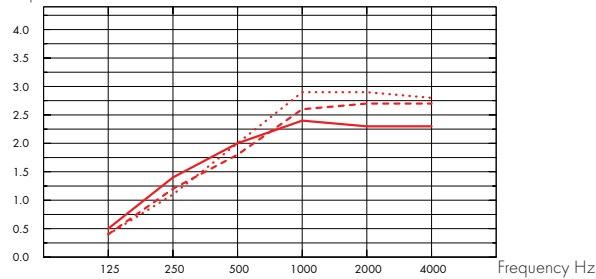
Acoustic

The values in the diagram refer to a single unit. If the units are arranged in a cluster with distances between units less than 0,5 meters, the Aeq per unit will be slightly reduced.

Sound Absorption:

Test results according to EN ISO 354.

A_{eq} Equivalent absorption area per unit (m² sabin)



- Solo Square 1200x1200, 200 mm o.d.s.
 - - - Solo Square 1200x1200, 400 mm o.d.s.
 - ... Solo Square 1200x1200, 1000 mm o.d.s.
- o.d.s = overall depth of system

THK mm	o.d.s. mm	A _{eq} Equivalent absorption area per unit (m ² sabin)					
		125 Hz	250 Hz	500 Hz	1000 Hz	2000 Hz	4000 Hz
40	200	0.50	1.40	2.00	2.40	2.30	2.30
40	400	0.40	1.20	1.80	2.60	2.70	2.70
40	1000	0.40	1.10	2.00	2.90	2.90	2.80

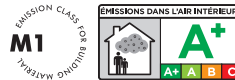


Indoor Air Quality

Certificate / Label

French VOC, A+

Finnish M1



Environmental Footprint

Solo Square, Kg CO₂ equiv/m²: 8,07

From EPD in conformity with ISO 14025 / EN 15804



Circularity

Fully recyclable.



Fire safety

Country	Standard	Class
Europe	EN 13501-1	A2-s1,d0

The glass wool core of the tiles is tested and classified as non-combustible according to EN ISO 1182.



Humidity Resistance

Class A, relative humidity 70% and 25°C, according to EN 13964:2014



Visual appearance

White Frost, nearest NCS colour sample S 0500-N, 85% light reflectance. Gloss < 1.



Cleanability

Daily dusting and vacuum cleaning. Weekly wet wiping.



Accessibility

The tiles are demountable.



Installation

Installed according to installation diagrams, installation guides and drawing aid. For information regarding minimum overall depth of system see quantity specification.



Mechanical properties

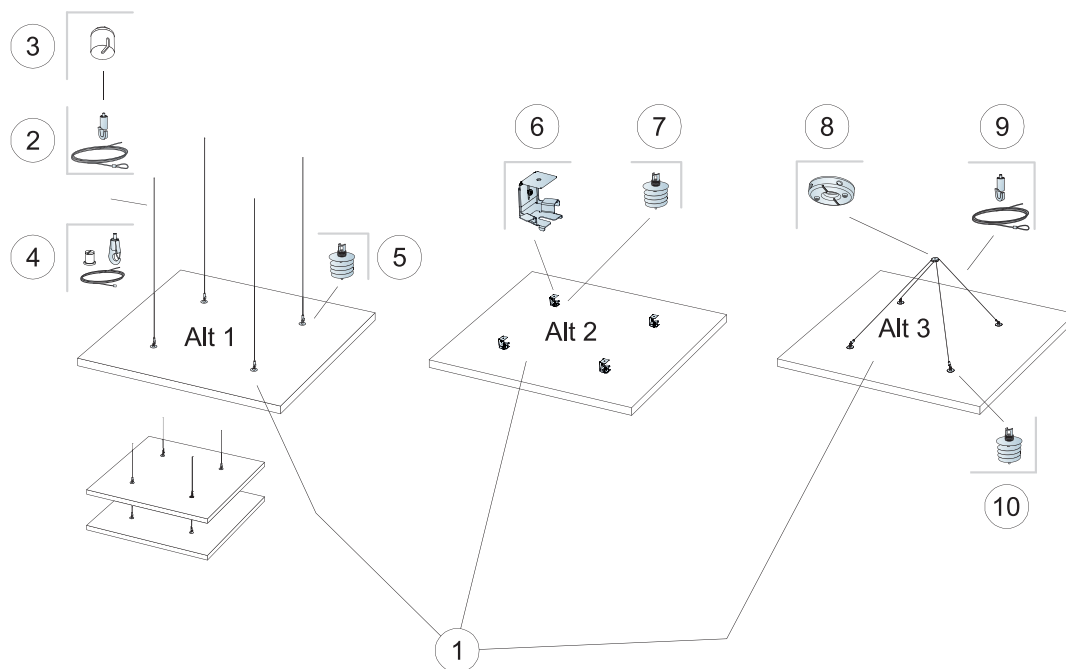
The tile can take both point loads and distributed loads. See Functional demands, Mechanical properties at www.ecophon.com.



CE

Ecophon ceiling systems are CE marked according to the European harmonized standard EN13964:2014. CE marked construction products are covered by a Declaration of Performance (DOP) which enables customers and users to easily compare performance of products available on the European market.

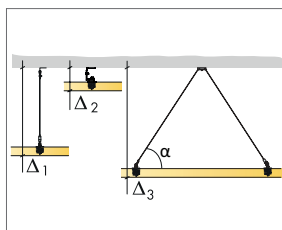
INSTALLATION DIAGRAM (M402) FOR ECOPHON SOLO SQUARE



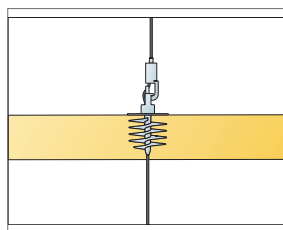
QUANTITY SPECIFICATION (EXCL. WASTAGE)

		Size, mm
		1200x1200
1	Solo Square	1,44m ² /panel
2	Connect Adjustable wire hanger (Alt 1)	4/panel
3	Connect Covering cup (Alt 1, Optional)	4/panel
4	Connect Adjustable wire kit (Alt 1, Optional)	4/panel
5	Connect Absorber anchor (Alt 1)	4/panel
6	Connect Absorber bracket (Alt 2)	4/panel
7	Connect Absorber anchor (Alt 2)	4/panel
8	Connect One-point fixing (Alt 3)	1/panel
9	Connect Adjustable wire hanger (Alt 3)	2/panel
10	Connect Absorber anchor (Alt 3)	4/panel

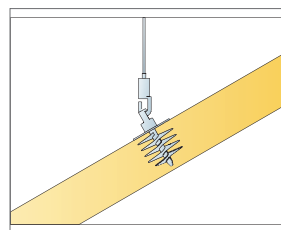
Δ Min. overall depth of system: Δ1 130 mm / Δ2 90 mm / Δ3 500 mm



See Quantity specification



Panels can be suspended underneath each other



Panels can be installed in angles

