


Important! Please read the information carefully before you install and set the software.

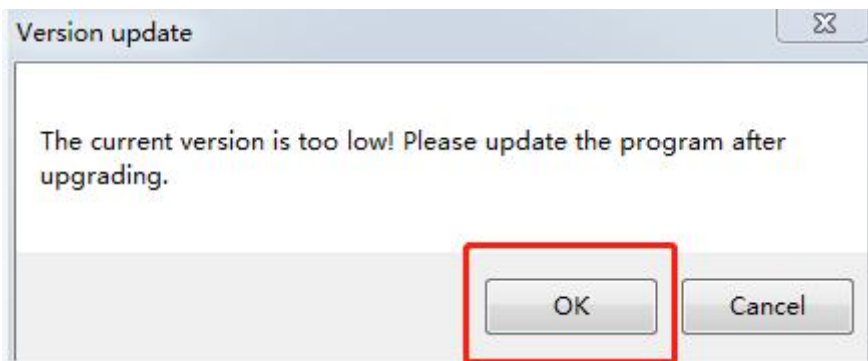
- ✓ **If you have any question about this keyboard, please feel free to contact us via <support@redragonshop.com>. We will always reply you within 24 hours.**
- ✓ **If you CANNOT OPEN the software after the installation, please don't worry. Use the update tool and you can solve the issue!**

 **Update Tool If you cannot open the software**

General Steps:

1. After installing the software, please update the version if the window appears (If not, it means your version is the latest one and no need to update).

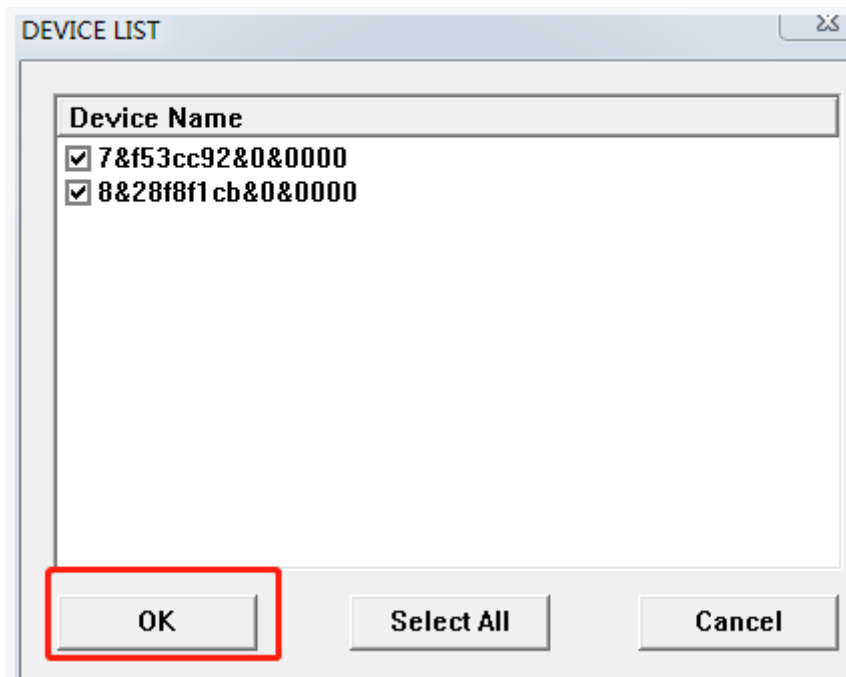
Step1:



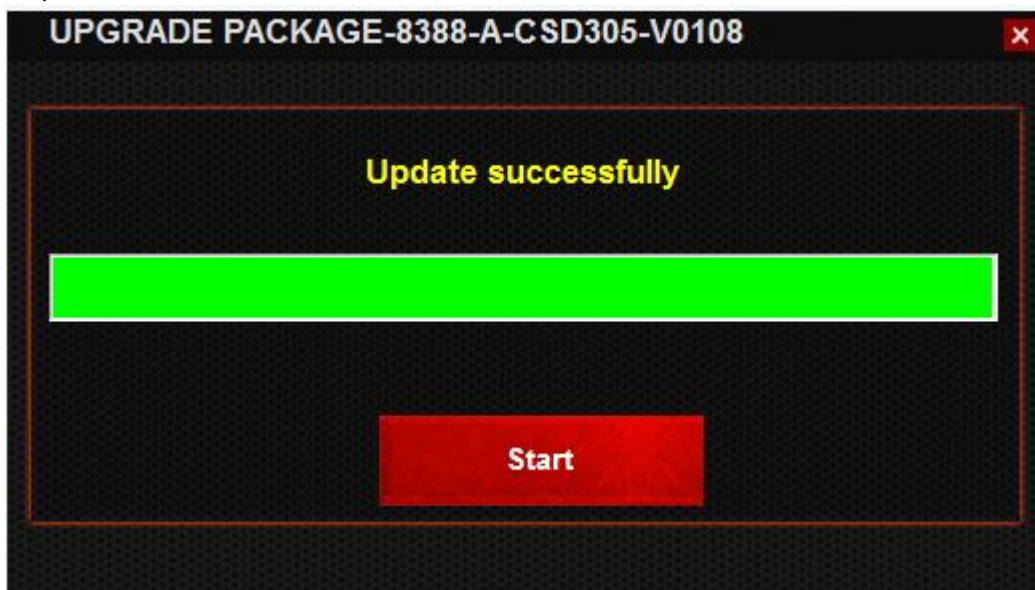
Step2:



Step3:



Step4:



2. When you see UPDATE SUCCESSFULLY, then you can open the software.



FAQ:

Q1: How to turn off the light?

A1: You need to set it via software: adjust the “Brightness” or choose the color as “Black”, then the light will be turned off completely.



Q2: Can every key on the keyboard be programmed?

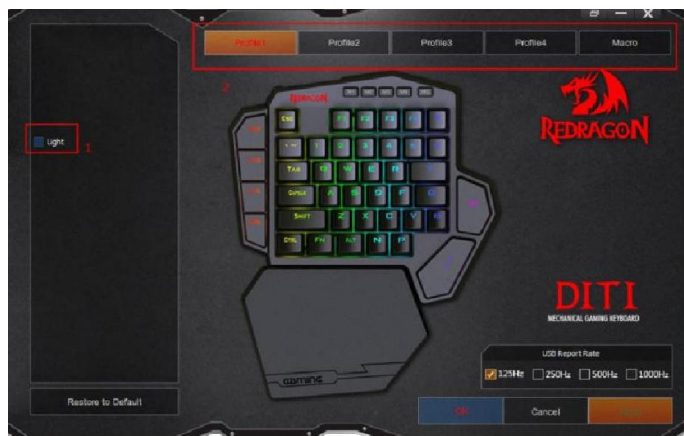
A2: You can program **all the keys except the M1-M4 and REC buttons** on the top of the keyboard since they are the profile keys.

Q3: How can I set the macro via the software?

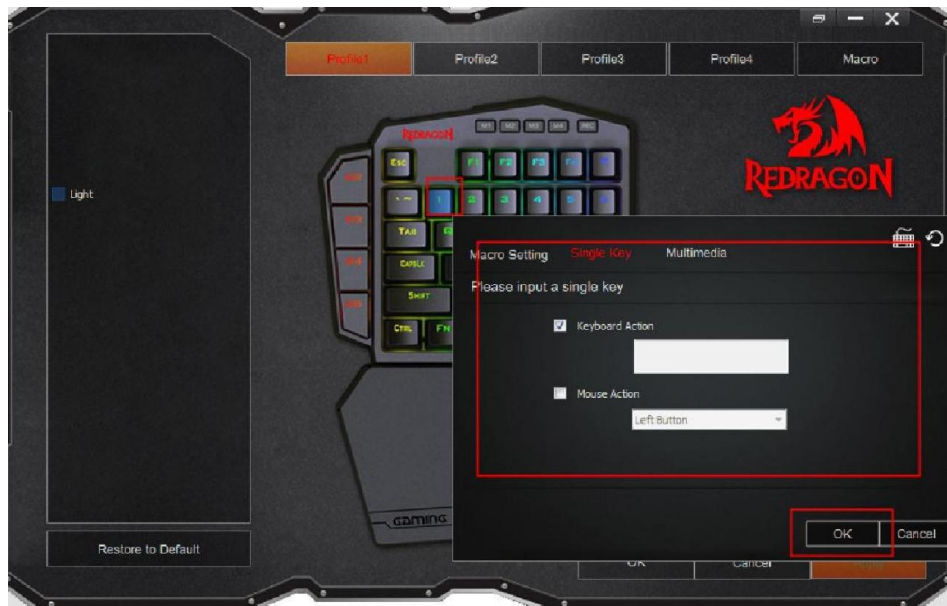
A3:

Step1: You need to **cancel the light choice first**, when you have this option, the keyboard is in the lighting mode, and no macro can be set.

Step2: Choose the profile you would like to record.



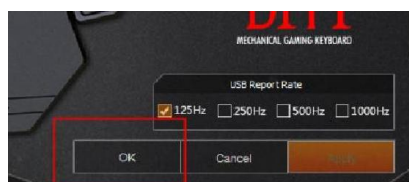
Step3: Choose a key you need to record and enter the keys or macro actions.



Please notice that the other keys of a full size keyboard can be recorded on this keyboard as well, you can use the virtual keyboard on the software to assign the keys.



Step4: Please **press OK to save the setting**. And the setting will be remembered even you use the keyboard on other computers.



Q4: What should I do if color on pallet cannot be customized?

A4: Move the “Triangle icon” on the right and then you can choose the colors you need.



Q5: How to cancel settings and reset the profile?

A5: You can press “Restore to Default” to reset the profile.



Q6: Can each switch on the keyboard be replaced?

A6: You can pull out and replace **all the switches except the M1-M4 and REC buttons** on the top of the keyboard.

Q7: I cannot open the software even though it has been installed successfully.

A7: Please make sure that no other Redragon keyboard is connecting with your computer, or no other Redragon' software or other brand's software is running.