

# General Specifications

Doc. Ref:	P100-1007	Rechargeable Li-ion Battery Pack Model Li204SX-7800, 3P3S, 7800mAh	Rev.	1.4
Date	April 2, 2014		Page	:

## 1. Description and model name

1.1 Description	Rechargeable Lithium-ion battery pack
1.2 Battery Cell Configuration	3P-3S

## 2. Electrical specifications

Item	Specification	Remarks
2.1 Capacity	7,800mAh	Nominal (by standard charge and discharge)
	7,500mAh	Minimum
2.2 Voltage	10.8V	Nominal
2.3 Charging method	CC-CV	Constant-voltage with limited current
2.4 Charging voltage	12.6±0.05V	
2.5 Charging current	3,900mA	Standard
2.6 Charging current cut-off	<390mA	
2.7 Discharging current	1,560mA	Standard
	3,900mA	Maximum (continuous)
2.8 Discharge cut-off voltage	9.0V	
2.9 Internal resistance	<300mΩ	
2.10 Operating temperature	0 ~ 40°C	Standard charge
	-20 ~ 55°C	Standard discharge
2.11 Storage temperature	0 ~ 25°C	≤ 1 year
	0 ~ 45°C	≤ 3 months
	0 ~ 60°C	≤ 1 month
2.12 Storage humidity	20 ~ 85% RH	Not condensed
2.13 Smart Module Communication	SMBus	Type
	V1.1	Revision

# General Specifications

Doc. Ref:	P100-1007	Rechargeable Li-ion Battery Pack Model Li204SX-7800, 3P3S, 7800mAh	Rev.	1.4
Date	April 2, 2014		Page	Sheet 3 of 4

## 3. Safety specifications

	Item	Specification
3.1 Over charge	Prohibition	13.05±0.15V
	Release	12.15±0.3V
	Delay time	< 1.0s
3.2 Over discharge	Prohibition	7.20±0.24V
	Release	8.10±0.3V
	Delay time	< 1.0s
3.3 Over current	Prohibition	7.5 ~ 13.5A(Depend on cell voltage)
	Release	By charging
3.4 Power dissipation	Operating	Max 300µA

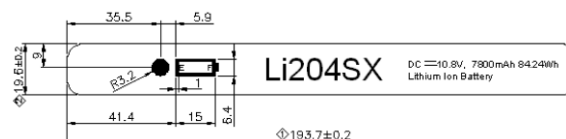
## 4. Physical specifications

	Item	Specification
4.1 Dimension	L x W x H	214.2±0.3 x 58.6±0.3 x Max 23.0 (mm)
4.2 Terminal (Output)		Power(+),Clock(C),Data(D),Thermistor(T),Power(-)
4.3 Weight		< 500g

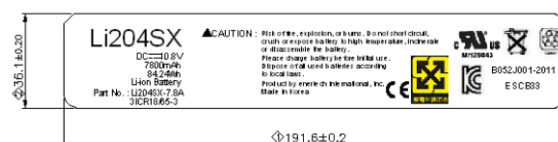
## 5. Certifications: UL(E225922)



## 6. Battery Label



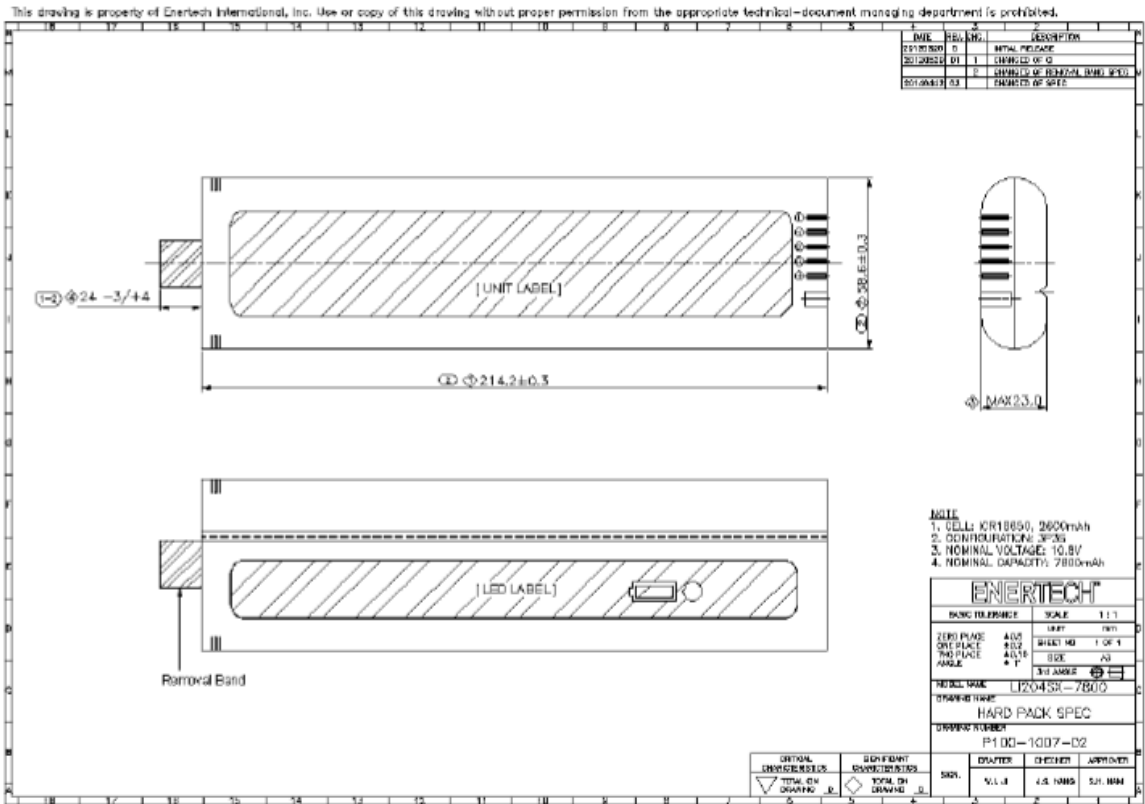
<LI204SX-7800mAh TOP LABEL>



<LI204SX-7800mAh BOTTOM LABEL>

Doc. Ref:	P100-1007	Rechargeable Li-ion Battery Pack Model Li204SX-7800, 3P3S, 7800mAh	Rev.	1.4
Date	April 2, 2014		Page	Sheet 4 of 4

## 7. Product drawing



## 8. Pictures

