



## INSTALLATION INSTRUCTIONS AND SAFETY INFORMATION

# Bicycle trailers - CLUTCH E&EL&ES

Version E is one of the most sold bike clutches on the market.

The E-clutch is fixed to the axle on the left rear dropout.

### Mounting the „E- EL- ES“ on the rear wheel axle

For solid axles, remove the left axle nut and possibly the washer.

For quick-release axles, the quick-release skewers have to be opened and pulled out of the axle.

**1.** Insert the clutch in the order sequence on the axle, as shown in figure 1. The safety lug of the polygon insert „A“ must engage the open side of the dropout.

**2.** Put the base „B“ on the polygon insert. The hinge piece must be horizontal and the bending edge of the base plate vertical. (2)

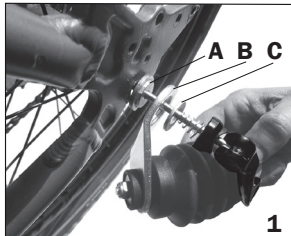


### Scope of delivery:

1x E-clutch incl. hinge piece, 1x washer  
3x standard polygon inserts for quick release with 2.5mm and 5.5mm thickness and for solid axle

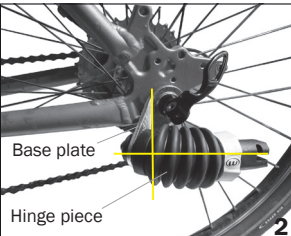
### No polygon insert fits?

Call us or send us an email: [info@weber-products.de](mailto:info@weber-products.de)  
We have also developed some handmade special solutions e.g. for Shimano, SRAM; Nexus hub gears and for derailleurs in connection with special frame shapes.




**3.** Insert the washer „C“ on the quick-release skewer and slide the quick release into the axle.

Tighten the adjusting nut of the quick-release skewer until the quick release closes very firmly (min. 8 turns).



The same sequence applies when connecting to a solid axle. Tighten the axle nut firmly with min. 8 turns!

 The polygon is fully pressed into the base plate of the clutch only by tightening the quick-release skewer or the axle nut!



**ATTENTION!** It is not allowed to leave out the washer „C“ so that there is adequate thread length, or else the polygon inserts may slip through. In such a case, the clutch and its function will not be covered by the guarantee and warranty!

Technical data:	
<b>E-clutch:</b>	Maximum weight allowed: 80kg Max. support load: 6.5kg
<b>EL-clutch:</b>	Maximum weight allowed: 80kg Max. support load: 6.5kg, Not for transporting children, only for transporting loads!
<b>ES-clutch:</b>	Maximum weight allowed: 100kg (only when mounted on a solid and thru axle!) Max. support load: 6.5kg Not for transporting children, only for transporting loads!



**GEFAHR!**

Note that the adjusting nut of the quick-release skewer must be screwed on with min. 8 turns or 8mm onto the quick release axle! (Min. 8 turns also for solid axle) Failure to comply carries the risk of tearing out and thereby a loss of the rear wheel and the trailer!

If a longer quick release skewer is required, it can be immediately ordered from WEBER at: [www.weber-products.de](http://www.weber-products.de) Nr: KU.03.330.00



**GEFAHR!**

When using this E-clutch, a safety strap with a metal clasp must be attached to the tow bar! Accessories can also be ordered at: [www.weber-products.de](http://www.weber-products.de) Nr: R2.12.400.00

The WEBER hitch described overleaf comes with a two-year warranty from the date of purchase in line with the following conditions:

- During the warranty period we shall rectify all damage reported to us at our own cost providing this has been demonstrably caused by a manufacturing or material defect.
- Complaints shall only be dealt with if a copy of the receipt is provided with the item subject to the complaint.
- Production-induced deviations shall not be classed as damage.
- We shall fulfil the warranty services by either repairing defective parts or replacing them with non-defective parts at our discretion. Any parts replaced shall transfer to our ownership.
- When the product is sent to us, it must be packaged in such a manner that prevents damage. The sender must bear the freight costs. Deliveries with postage unpaid shall not be accepted.
- We shall bear the cost of returning the replaced or repaired goods. The warranty shall not apply in the event of improper handling.
- Warranty services shall neither extend the warranty period nor start a new one.
- The warranty period for replacement parts shall end on the same date as the warranty period for the entire product. Unless required by law, we shall not assume any liability for claims, including those resulting from consequential damages.

If you have any questions, please contact your retailer or us directly! E-mail: [info@weber-products.de](mailto:info@weber-products.de)

**the product cannot be sold in the USA and Canada! (Product liability)**

## Congratulations!

By purchasing this robust and sophisticated Hitch you have opted for a high-quality German product that has been developed and manufactured in Eggstätt/Bavaria. To ensure that your Hitch works for as long as possible, we have compiled several important pieces of information for you, which you should read carefully before using the product for the first time.



Please adhere to all safety instructions in order to enable smooth operation and maximum safety.

Store the operating instructions in a safe place so that you can access them at a later date if required. Non-observance of the instructions could endanger your safety as well as the safety of your child and other road users. If you have any questions about the installation, maintenance or usage of the product, please contact your Weber retailer or visit us online at: [www.weber-products.de](http://www.weber-products.de)

We hope you enjoy fun and safe journeys every time!

## Icons in the operating manual

icons used within this document:



### Caution!

Risk of the hitch being destroyed or damaged



### Note!

Additional information aside from the operating manual



### Danger!

Hazard that poses a risk to life and limb

## Safety instructions:



- Ensure the spring pin is fully locked into place on all rides!
- Ensure that the tow bar on the vehicle is correctly fitted and secured. Any incorrect installation can lead to the trailer detaching while riding and serious consequences.
- Always fasten the safety strap around your bicycle frame's rear chainstay!
- Child bicycle trailers are not allowed on an EL-coupling or ES-coupling append!

## Correct use of the hitch

- This Weber hitch has been designed to tow trailers with a permissible total weight of up to 80 kg. (With the exception of the ES hitch = authorised for 100 kg).
- For safety reasons, we advise you to have your specialist retailer attach the hitches to your bicycle.
- Due to the many different bicycle dropout shapes and gear designs, our hitches do not generally fit all bicycles.
- Longer quick release axles or a replacement axle are often necessary. Extremely sporty mountain bikes and modern internal gear hubs in particular require special polygons (special anti-rotation discs for the bicycle hub), which you can purchase either from your specialist retailer or directly from us.

## Improper use of the hitch

### • **Not suitable for use on S-Pedelecs or E-Bikes! (Not authorised for over 25 km/h)!**

- Do not transport unsecured or oversized goods!
- Do not ride up/down steps or high kerbs!
- Do not breach the limits established by the technical specifications (operating instructions)!

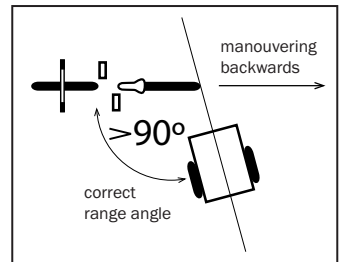


## Conditions of use for trailer hitches!

- **Cyclist-related information:** children under the age of 16 are legally prohibited from cycling while towing a trailer.
- **Bike-related information:** the bike must be in a technically sound condition and meet the latest technology standards. Always consult your bike manufacturer in advance to find out if your bike is authorised for use with a trailer.
- **Maintenance-related information:** have specialists regularly service your bike, the hitch and your trailer and inspect all connections.

## Manoeuvring with a trailer and hitch

- Never turn on the spot with your bike and trailer combination.
- The angle between the bike and the trailer must always be greater than 90°, even when manoeuvring. If you ignore this information, you will destroy the joint piece as it will bend at smaller angles and can break.
- Always attach the tow bar's tether strip to one of your bike's frame tubes. Tighten it so that it cannot interfere with the spokes or get in the way when you are cycling.
- The maximum trailer load is 80 kg (ES 100 kg)



If you have purchased a connection piece with a lock, please store one of the two keys provided separately and note the key number in case of loss.

## Note the key number!

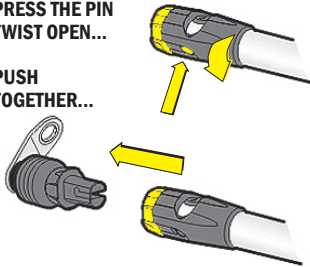
Key number: \_\_\_\_\_

### Hitch maintenance:

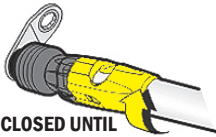
The parts are largely maintenance free but should still be regularly cleaned to remove all dirt, salt and dust.  
Never use oil to improve the function; if stiff, only ever apply a little silicon or Teflon spray.

**PRESS THE PIN  
TWIST OPEN...**

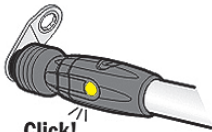
**PUSH  
TOGETHER...**



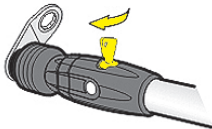
**TWIST CLOSED UNTIL  
PIN LOCKS IN PLACE**



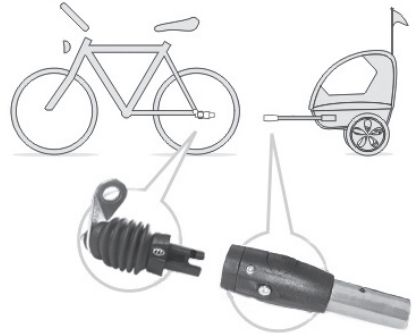
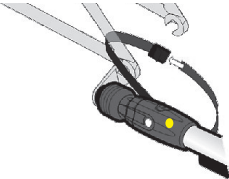
**Click!**



**LOCK!**



**ATTACH  
SAFETY STRAP!**



### Attachment:

1. Press the pin on the handle and twist the grip piece anti-clockwise.
2. Push the grip piece and the hitch together. Ensure that the smooth surfaces of the hitch and the connection piece are aligned with one another.
3. Twist the grip piece clockwise until you hear a clear click. Only then is the hitch securely locked into place.
4. In the case of connection pieces with a lock, lock the hitch with the key provided.
5. Place the safety strap around the bike's rear chainstay. Thread the strap through the loop and lock it in place by pushing it together. The strap should have enough play to not impair the trailers ability to change direction.

### Removal:

1. Unfasten the safety strap on the bike frame and unthread it.
2. Press the pin and twist to open.
3. Remove the tow bar from the hitch.