

LEARN

Faux Calligraphy

Faux calligraphy is a style of modern calligraphy, where you manually add in the “downstrokes” that a brush pen would make. It is what is used on surfaces that you cannot use a brush pen on, such as wood, glass, acrylic etc. It is a great skill to have in the basket first.

HERE IS AN EXAMPLE OF THE STEPS TO TAKE:



WRITE

Write your letter normally



ADD WEIGHT

Go back to where your pen went 'downwards and add a line'



INFILL

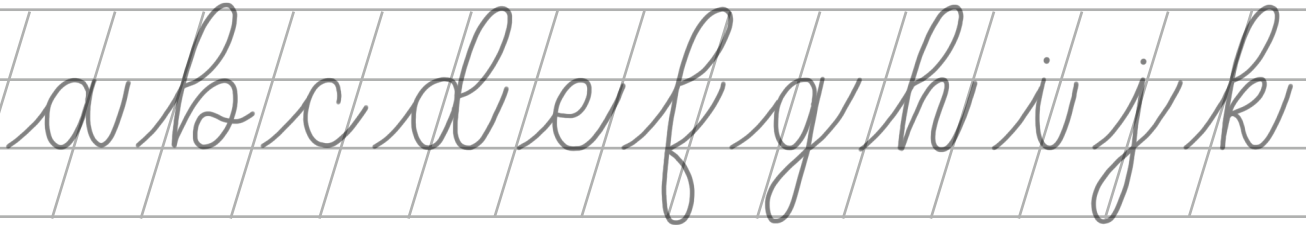
Fill in those gaps to create the 'brush calligraphy' effect

ASCENDER

WAIST

BASELINE

DESCENDER

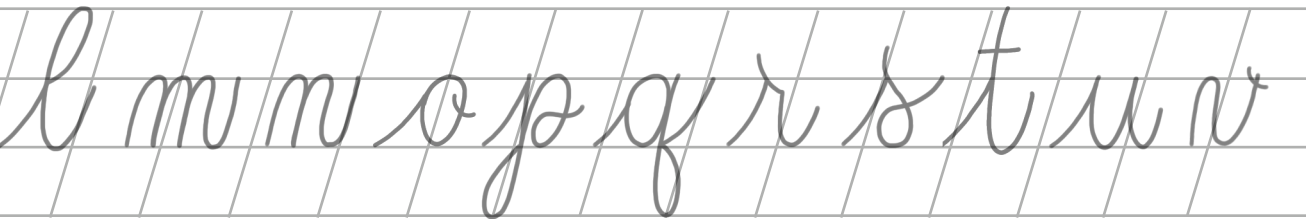


ASCENDER

WAIST

BASELINE

DESCENDER



ASCENDER

WAIST

BASELINE

DESCENDER



FIND US AT
www.itchyxsketchy.com

itchy & sketchy

TAG US ON
Instagram - itchyxsketchy