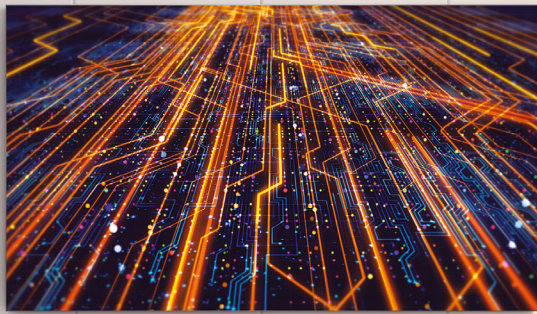


SAMSUNG



KnitEtec

sales@knitec.com

(866) 469-7111

www.knitec.com

Indoor LED All-In-One

IAC series (LH015IACCHS/ZA)

This is the true all-in-one.

Discover a true all-in-one LED display. Experience easier installation than ever with Samsung's exclusive Quick Build technology. Dock the two background plates and hang just four preset modules, and that's it. It can take as little as two hours to install a giant screen in your space. The IAC series also integrates the control box so it's built into the display, eliminating time-consuming configuration between control box and cabinet. As no additional purchases or components are required, it allows you to focus on getting your display up and running fast. All you have to do is enjoy its brilliant performance. This is Samsung's promise of all-in-one.

Key features



Quick Build

Samsung's exclusive technology enables a drastically simplified installation taking as little as two hours to complete a giant 130-inch screen.

* Install time estimate based on internal testing.



Built-in Control Box

The built-in control box eliminates a cumbersome configuration process to get the display up and running faster.



All-inclusive Components

From the control box and wall brackets to speakers and deco bezels, every extra peripheral needed to begin operation is included.



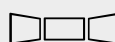
Brilliant Visuals

The IAC series produces images with vivid color expression, reduced noise and a full range of grays and blacks.



HDR

LED HDR turns any content into HDR-level without requiring special metadata.



Multi-Screen Connection

Samsung's IAC series allows users to combine multiple displays side by side for simultaneous use, expanding business possibilities for large meeting spaces.

Specifications

| Model | | IAC |
|--------------------------------|---|---|
| | | 130" 2K LH015IACCHS/ZA |
| Physical Parameter | Pixel Pitch | 1.5 mm |
| | Pixel Configuration | 1 red, 1 green, 1 blue |
| | Configuration (L x H, Per screen) | 1,920 x 1,080 pixels |
| | Diode Type | Surface Mount Device (SMD) |
| | Dimensions (mm / in.), L x H x D, Per screen) | 2,888.5 x 1,628.5 x 56.2 mm / 113.7 x 64.1 x 2.2 in. (62.2 mm / 2.4 in. total depth with Wall mount) |
| | Dimensions (inch, Diagonal x D, Per screen) | 130 x 2.2 inch |
| | No. of Modules (W x H, Per screen) | 12 x 9 |
| Weight (Per screen) | 125 kg / 275.6 lbs. | |
| Optical Parameter | Brightness (Peak/Max) ⁽¹⁾ | 1,000 nit / 500 nit |
| | Contrast Ratio ⁽²⁾ | 6,000 : 1 |
| | HDR Compatibility | LED HDR / AI Picture |
| | Viewing Angle - Horizontal | 160° |
| | Viewing Angle - Vertical | 160° |
| | Bit Depth | 16 bit (Internal processing 20bit) |
| | Color Temperature - Default | 6,500K ± 500K (Floating bin) |
| Color Temperature - Adjustable | 2,800K - 10,000K | |
| Electrical Parameter | Video Rate | 50/60 Hz |
| | Input Power Range | 100-240 VAC, 50/60 Hz |
| | Power Consumption - Max | 1700 (w/Screen) |
| | Power Consumption - Typ | 685 (w/Screen) |
| | Heat Generation - Max | 5800 (BTU/Screen) |
| | Heat Generation - Typ | 2337 (BTU/Screen) |
| | Refresh Rate | 3,840 Hz |
| Visual Refresh Rate | 7,680 Hz | |
| Operational Parameter | Power Redundancy | No |
| | Working Temperature/Humidity | 0°C-+40°C/10%-80%RH |
| | Storage Temperature/Humidity | -20°C-+45°C/5%-95%RH |
| | IP Rating | IP20 |
| Connectivity / Sound | LED Lifetime | 100,000 hours |
| | Controller | Built-in |
| | Input (Video) | DP1.2 (1), HDMI 1.4 (3), USB 2.0 (2) |
| | Output | Audio (Stereo mini Jack) / eARC |
| | WiFi/BT | O/O |
| | External Control | RS232C (In), RJ45 |
| | Speaker | 10W 2ch |
| Certification | Safety | 62368-1, 60950-1 |
| | EMC | Class A |
| | Eye-protection | TUV Eye Comfort |
| Service | Fire-protection | N/A |
| | Service | Front |
| Features | Operating System | Tizen 6.5 |
| | MagicINFO | Yes |
| | Sensor | Temperature, Humidity, Eco Sensor |
| | Other | AI Picture, LED HDR, Dynamic Peaking |
| Accessories | Other SW Features | Workspace (Microsoft365/VMWare/RDP), Auto Source Switching and Recovery, Dicom Simulation Mode, SmartView+ |
| | Accessories (In-box) | Décor Frame, Frame Kit, Buffer parts |
| Package | Remote Control | IR Remote Cotroller |
| | Box Dimension (mm / in., W x H x D) | 1,840 x 1,847 x 594 mm / 72.4 x 72.7 x 23.3 in. (without pallet) 1,850 x 1,982 x 815 mm / 72.8 x 78 x 32 in. (with pallet) |
| Special Installation | Package Weight (Per cabinet) (kg / lbs.) | 210 kg / 463 lbs. |
| | Curve | N/A |
| | Inclination | N/A |
| | Rotation | N/A |
| Other ⁽³⁾ | Side by Side Installation with additional frame kit (Up to 4 screens) | |

Learn More samsung.com/display samsung.com/business insights.samsung.com
Product Support 1-866-SAM4BIZ
Follow Us [youtube.com/samsungbizusa](https://www.youtube.com/samsungbizusa) [@SamsungBizUSA](https://twitter.com/SamsungBizUSA)

