



GROOVE
TECHNOLOGY SOLUTIONS

Groove Technology Solutions



The Groove Difference

We wouldn't have lasted over a decade if we didn't put personalized customer care and real support at the top of our priority list. We take great pride in being your partner and offering solutions that deliver better experiences.

In-house from Beginning to End!



Engineering



Installation



24/7 Support





Certifications

Groove is proud to have pioneered the industry's first in-house certification program that has propelled our workforce and created a consistent experience for our customers.

- COM3000, COM2000, COM1000
- Advanced Entertainment Platform
- DRE Basic, DRE Looped, DRE Managed
- LG Pro:Centric
- Ruckus, RASZA, RACPA, RICXI
- Aruba Wireless
- Cisco Meraki CMNA, CWNA
- Ekahau ECSE
- A+, Net+, C+
- MikroTik MTCNA & MTCRE
- D2 Advantage
- SBCA, SMATV
- Control4
- Fox Com Fiber Optic
- Voiceware by Phonesuite
- Asterisk Essentials

Casting Solutions

80% of guests desire some sort of casting from their guestroom TV.



Hospitality's Most Advanced Hotel TV In-Room Entertainment System



App Streaming, Casting, Voice TV controls, and hotel amenity access in one system resulting in enhanced guest satisfaction by bringing an at home experience to the hotel guestroom.

GuestCast

Over 80% of hotel guests want to cast their own content from their own devices.

Cast content from thousands of Apps. Using a guest room's existing Wi-Fi connection, guests with an iPhone®, iPad®, Android phone and tablet, Mac® and Windows® laptop can effortlessly and instantly make use of a larger screen.



Amazon Alexa

A voice-based guest engagement software running on Amazon's Echo® and Dot.

Alexa,
...go to the TV Guide.
...I'd like to have more towels.
...where's the pool?
...order in-room dining.
...what time is checkout?
...where can I get a drink?



Security

BeyondTV was awarded a patent by the USPTO for the Guest Data Security protocol.

Online browsing or app usage history and any personal account information, such as usernames or passwords, is completely erased to ensure against identity theft or otherwise unauthorized use.





Wi-Fi Networks



ENHANCING THE CONNECTED GUEST EXPERIENCE

Ruckus helps organizations of **all sizes** deliver **great connectivity** experiences. Ruckus' **secure access** networks delight employees, customers, students, subscribers and guests while easing the IT burden, **affordably**. Organizations turn to Ruckus to make their networks **simpler** to manage and to better meet their users' expectations.



83% of hotel guests take the time to report a bad Wi-Fi experience, and 36% won't rebook if they had one. If your guests can't get a **fast, reliable Internet** connection, they will not likely come back. **Ruckus's** wired and wireless solutions are the gold standard for hoteliers worldwide.

ONE NETWORK FOR ALL CONVERGED SERVICES

- Tiered High-Speed Internet Access (HSIA)
- Point-of-sale Terminals
- IP-based Video On Demand (VOD)
- Back Office & Service Optimization Services
- Voice Over IP (VoIP)
- Digital Signage & Kiosks
- In-room IP-enabled Devices Of All Kinds



Designed for you

Every system is designed for your hotel and needs and budget

Remove POTS Lines

As POTS lines become increasingly expensive, Voiceware is designed to remove those costs and fees.

Hardware Agnostic

We can work with your existing phones or provide new ones. (depending on the application)



Voiceware®

Groove Voiceware Hospitality Phone Platform

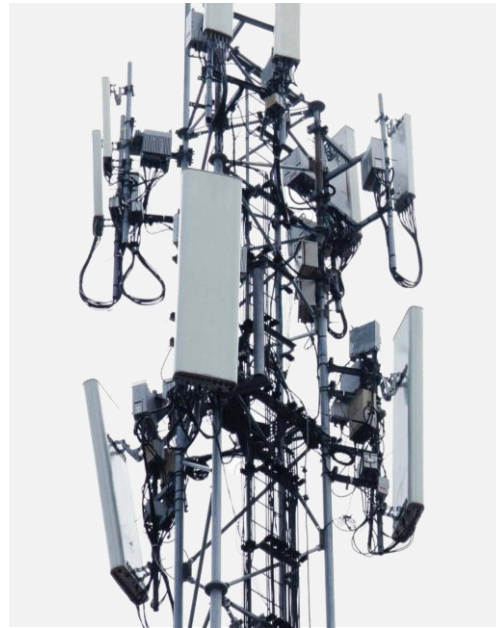
- Voiceware is a VoIP phone system designed for the hospitality industry.
- The server-based core makes Voiceware extremely scalable and flexible, while enabling Groove to continually enhance and improve communication without expensive equipment upgrades.
- Unlike traditional hardware-based PBXs, the Voiceware platform is fully integrated into one software-based application, built from the ground up for IP-based communication.



GROOVE
TECHNOLOGY SOLUTIONS

Cellular Amplification

Distributed Antenna Systems



Cellular Connectivity For Business. Amplified.

Eliminate in-building weak mobile spots. Outside antennas connect via cable to internal signal boosters that provide maximum signal strength, behind glass, steel and stone.



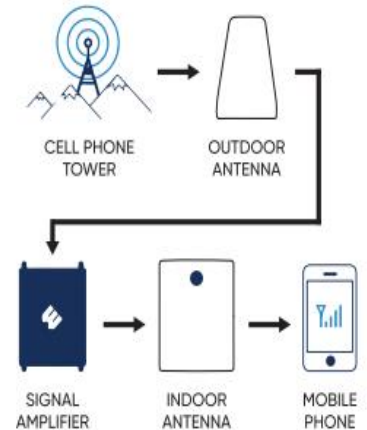
What is a Cell Phone Signal Amplifier system?

Cell phone signal amplifier systems (or passive DAS systems) are comprised of three main components; outdoor (donor) antenna, signal amplifier, and indoor antenna. Together, they form a wireless system that amplifies the existing cellular signal found outside a building and rebroadcasts it indoors to enhance cell signal reception and increase the signal coverage area.

BENEFITS

Distributed Antenna System:

- Increased bandwidth for faster cellular data speeds.
- Supports up to thousands of mobile devices & cell phones simultaneously.
- Automated monitoring systems maintain optimal performance and detect any problems.
- Reduces broadband Wi-Fi network strain & landline dependency.



THE END RESULT IS SIMPLE

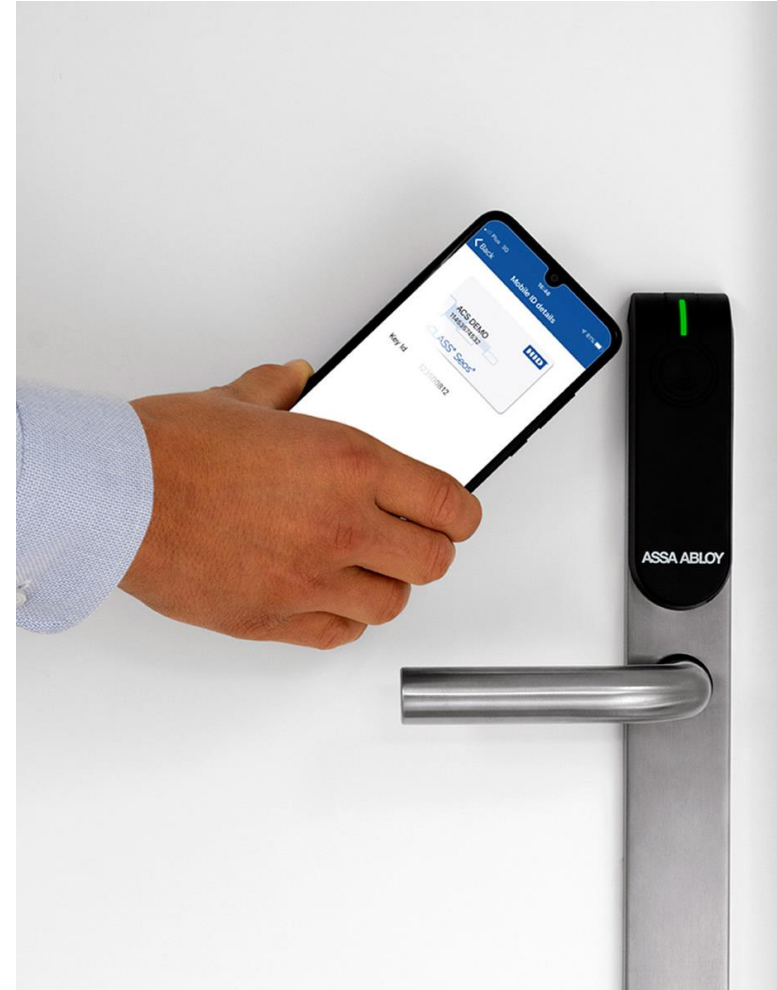
No more dropped calls, slow internet, stuck text messages, poor voice quality, and long loading screens.



GROOVE
TECHNOLOGY SOLUTIONS



Security + Card Access



Our Security and Lock Suite



**Video
Surveillance**

**Guest Door
Locks**



Card Access



Assa Abloy Door Locks

Security Concerns

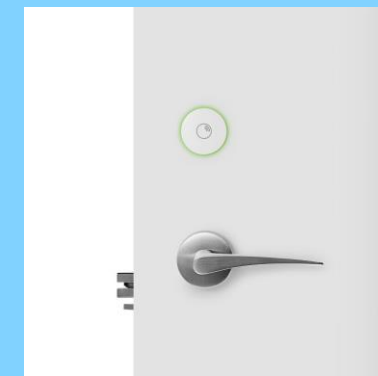
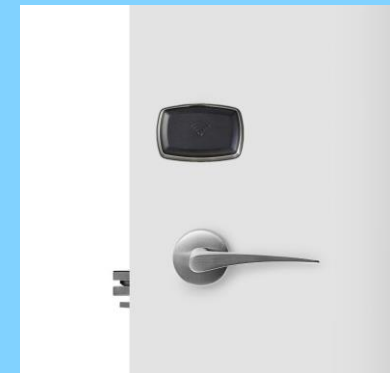
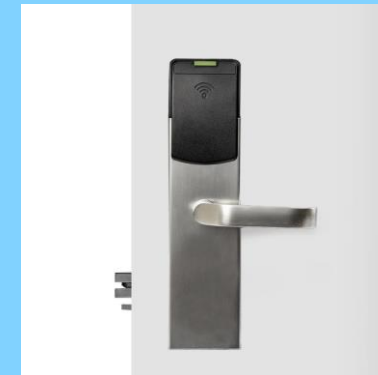
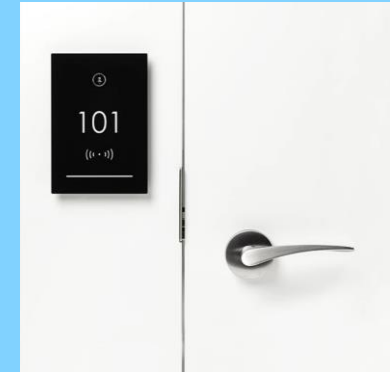
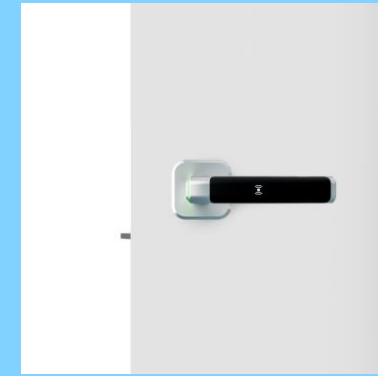
With increasing threat of theft and burglary, hotels want to ensure the safety of their guests and staff. Upgrading to smart door locks is one way to improve security and prevent unauthorized access to guest rooms.

User-Friendly Technology

Our door locks offer user-friendly technology, making them easy to use for both hotel staff and guests. The locks can be integrated with a variety of systems, such as your PMS. And mobile access solutions.

Customizable

Assa Abloy door locks offer customizable solutions that can be tailored to meet specific needs of each hotel no matter the size.





GROOVE
TECHNOLOGY SOLUTIONS

Energy Management

INTEREL



Industry Statistics



Average Hotel Spends

\$2,196 Per Room Per Year on energy (\$183 dollars per room per month).

Utility Costs

Represent the second biggest operating expense for hotels, only behind labor costs.

Typical Energy Split

Is 80% in guest rooms vs the remainder of the property.

HVAC Usage

Compromises of 80% of energy usage within the guest rooms.