

ELKAY® SPECIFICATIONS

No Lead Drinking Fountain Soft Sides® Wall Mount Fully Exposed Model EDFP210C

GENERAL

EDFP210C Wall mounted drinking fountain constructed of #18 gauge, type 304, stainless steel polished to a lustrous satin finish. Contoured basin minimizes splashing and has exclusive Flexi-Guard® safety bubbler to prevent accidental mouth injuries. Keyed in location to prevent rotation. Easy to operate, fully functional push button is vandal-resistant. Bottom cover plate included. Flow regulator provides constant stream from 20 to 105 psi water pressure.

NO LEAD DESIGN

THIS WATER FOUNTAIN COMPLIES WITH THE LEAD-FREE DEFINITION IN THE SAFE DRINKING WATER ACT OF 1986 AND LEAD CONTAMINATION CONTROL ACT OF 1988.

Elkay Drinking Fountains are manufactured with a waterway system utilizing copper components and completely lead-free material. These waterways have no lead because all leaded materials, such as leaded brass, have been removed.

CONSTRUCTION

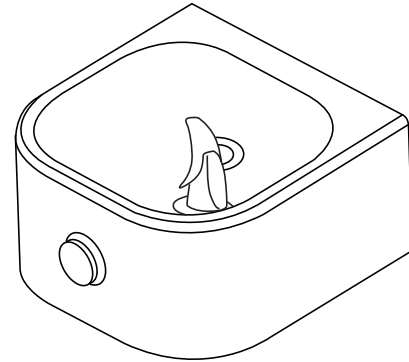
EDFP210C furnished complete with Flexi-Guard®, fully assembled front push button, flow regulator (20 to 105 psi), and drain and trap assembly. Stainless steel bottom cover plate.

ACCESSORIES

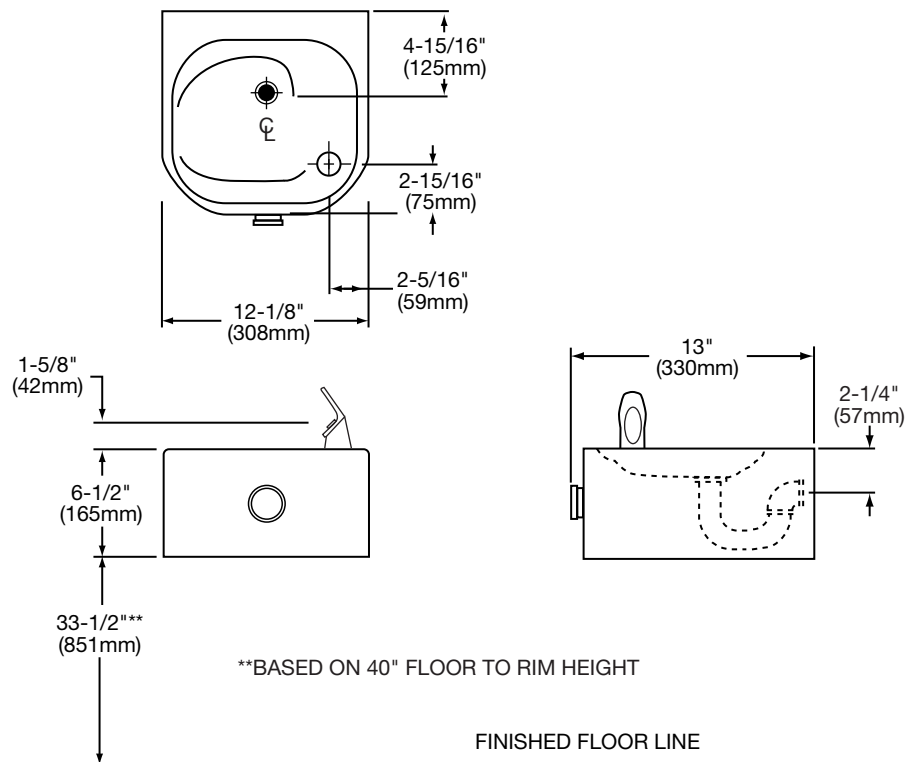
MPW101 In-wall carrier mounting plate.

ML100 Support columns for MPW101.

This fountain is certified by WQA to lead-free compliance including NSF/ANSI 61-ANNEX G, AB 1953.



Model EDFP210C



In keeping with our policy of continuing product improvement, Elkay reserves the right to change product specifications without notice. Please visit elkayusa.com for most current version of Elkay product specification sheets.

This specification describes an Elkay product with design, quality and functional benefits to the user. When making a comparison of other producers' offerings, be certain these features are not overlooked.

**No Lead Drinking Fountain Soft Sides®
Wall Mount Fully Exposed
Model EDFP210C**

**ELKAY®
ROUGH-IN DIMENSIONS**



**TOLL FREE: 800-442-6622
PITTSBURGH: 412-781-9100**

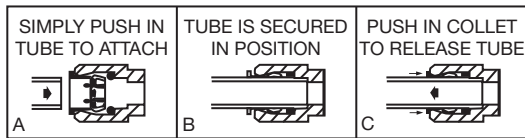
www.equiparts.net

That Hard to Find Part is Right Here!

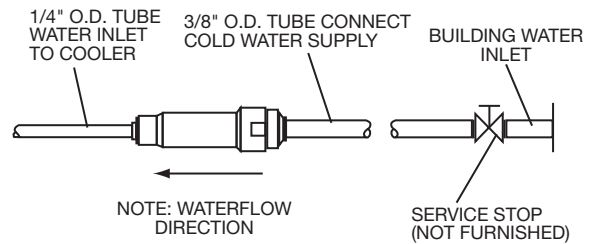
INSTALLER NOTE

THIS DRINKING FOUNTAIN IS FURNISHED WITH A BUBBLER AND VALVE INCLUDING ALL CONNECTING FITTINGS WHICH ARE MANUFACTURED OF COMPLETELY LEAD FREE MATERIAL. SHUT-OFF VALVE (NOT FURNISHED) TO ACCEPT 3/8" O.D. UNPLATED COPPER TUBE.

OPERATION OF QUICK CONNECT FITTINGS



PUSHING TUBE IN BEFORE PULLING IT OUT HELPS TO RELEASE TUBE



WALL ROUGH-IN

