



model 2000S

Recessed-Mount Hydration By Haws™ Bottle Filler

FEATURES & BENEFITS

SENSOR OPERATED

Electric sensor allows for touch-free hygienic operation, eliminating the need for manual activation.

QUALITY CONTROL

The Haws bottle filling station is pre-built and fully water and pressure tested to ensure no leaks and proper function for reduced installation time and added peace of mind.

DURABLE FINISH

#4 satin stainless steel back panel can be easily cleaned and maintained while also resisting corrosion.

SERVICING & SECURITY

Durable ABS plastic front panel allows simple access to internal components. 30-second time-out prevents unwanted use. Hidden lock and hinges discourage vandals.

ADVANCED FILTRATION

2,500-gallon (9464 L) capacity, electronic lifecycle control filter cartridge will shut off water flow when capacity is reached to ensure fresh, filtered water with every activation. Filter replacement indicator light will flash yellow when filter life is at 10% and will flash red when replacement is necessary. Preparing to replace filter is important when the filter light flashes yellow.

EXTENDED WARRANTY

Superior engineering incorporated into this product carries an extended 3 year warranty.

OPTIONS

- ❑ Replacement Filter: Model 6423 is the 2,500-gallon (9464 L) replacement filter with electronic lifecycle control for the Hydration By Haws™ Model 2000S
- ❑ Remote Drinking Fountain Water Chiller: Model HCR8, 8 GPH (30.3 L) remote chiller provides for instantaneous cooling to meet a continuous demand for chilled water.
- ❑ 2000 Series Mounting Frame: Model MTGFR.HSC, galvanized steel mounting frame with grille for the 2000 series bottle filling stations.



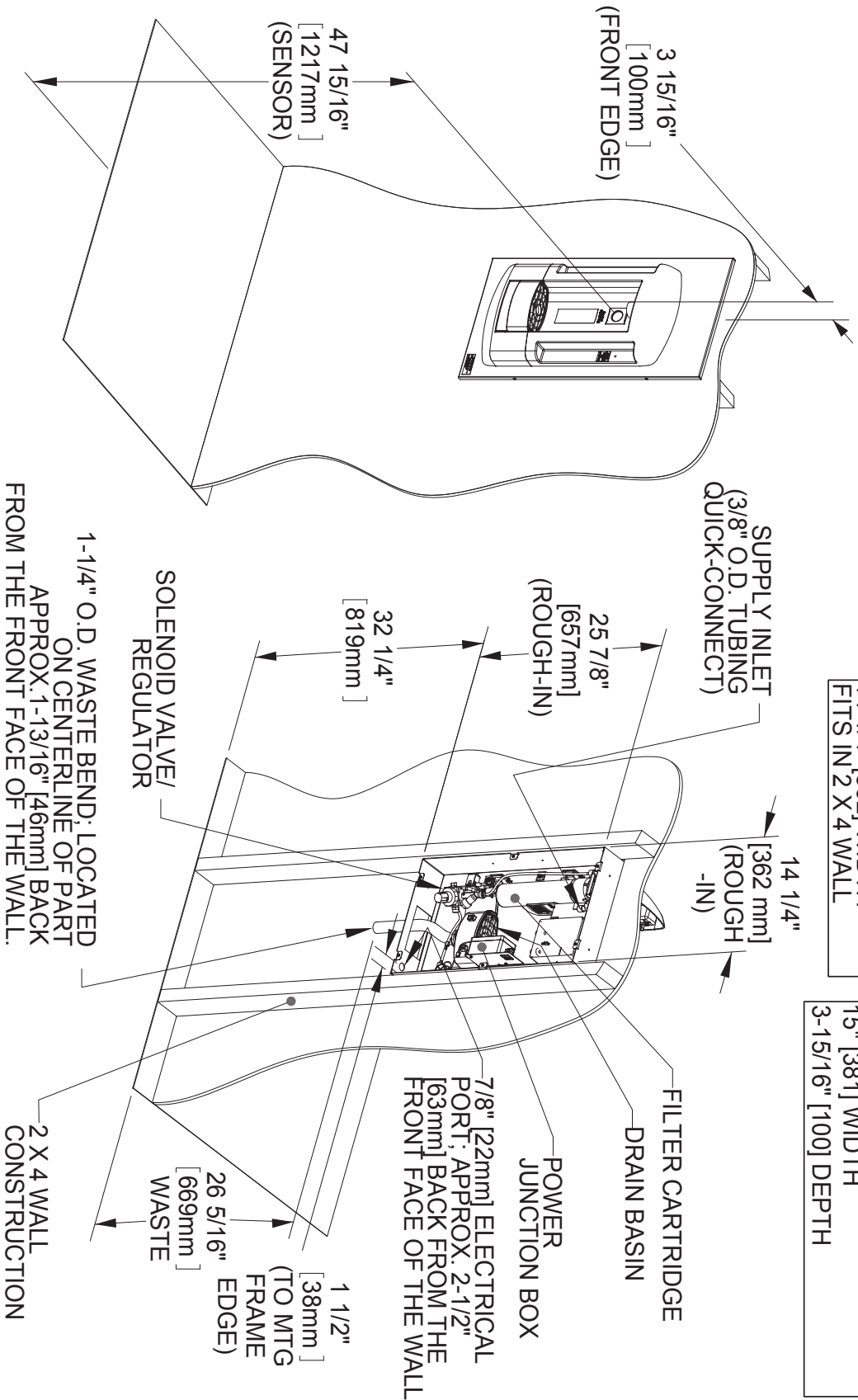
SPECIFICATIONS

Model 2000S Hydration By Haws™ water dispenser is a semi-recessed, wheelchair accessible bottle or cup filling station constructed of durable ABS plastic and 16-gauge, Type 304 Stainless Steel with a satin finish. It features an electric sensor for touch-free hygienic operation, a 30-second timeout preventing unwanted use, laminar flow to prevent splashing, and a .5 gpm (1.9 L) flow rate for quick fill-up. 2,500-gallon (9464 L) carbon block filter reduces chlorine (taste and odor) and lead, and removes 99.99% of cysts. The mounting frame is of heavy-gauge, galvanized steel. 110 volt, 60Hz, and .1 amp draw when in use. Tailpiece is 1-1/4" (32 mm) O.D. Provision for trap (not included) must be made in or behind wall.

APPLICATIONS

Perfect for either public or private indoor settings, the Hydration By Haws™ water dispenser is a great fit in areas where aesthetics are important to the overall appeal of the architecture. Specifically, this type of semi-recessed, wall-mounted bottle filling station is ideal for office buildings, airports, schools, manufacturing facilities and municipalities. Model 2000S meets the Americans with Disabilities Act when mounted at the correct height. Haws manufactures drinking fountains and electric water coolers to be lead-free by all known definitions including NSF/ANSI Standard 61, Section 9, NSF/ANSI Standards 42 & 53, NSF/ANSI 372 and CSA Standard B483.1. Product is compliant to California Health and Safety Code 116875 (AB 1953), California Proposition 65 and the Federal Safe Drinking Water Act. Model 2000S is certified to the Standard for Water Treatment Appliances (UL979).





Haws

1455 KLEPPER LANE
SPARKS, NEVADA, 89431
(775) 369-4712, FAX (775) 369-7424
E-MAIL: HAWS@HAWS.CO.COM
WEBSITE: WWW.HAWS.CO.COM

ENGINEERED PART BY: JL	MODEL(S): 2000S
DATE: 08/19/17	HAWS BOTTLE FILLER
DATE: 08/19/17	INSTALLATION
DATE: 08/19/17	SCALE: N/A
DATE: 08/19/17	DRAWING TYPE:
DATE: 08/19/17	SIZE: A
DATE: 08/19/17	SHEET: 1 OF 2
DATE: 08/19/17	REVISION: 1
DATE: 08/19/17	PART NUMBER: 051000063.D