

FIRST TEAM SPORTS, INC.

OMNI PORTABLE BASE

Assembly Instructions



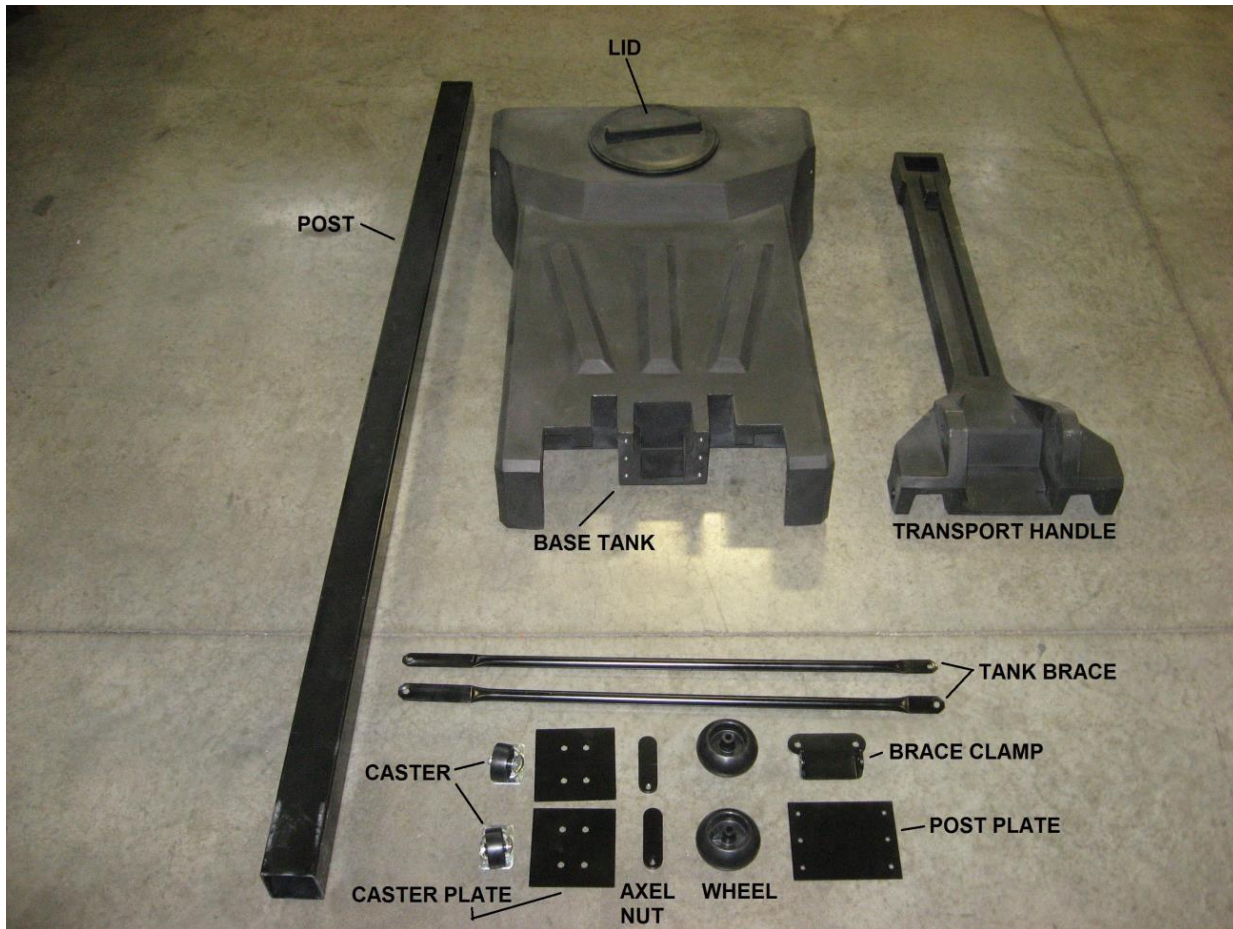
HARDWARE BILL OF MATERIALS

Below is a list of the nuts and bolts needed to assemble the Omnibase.

- | | |
|----------------------------|-----------------------------|
| (14) 5/16" x 3/4" Hex Bolt | (1) 1/2" x 4" Square U-Bolt |
| (14) 5/16" Lock Washer | (2) 1/2" x 6" Hex Bolt |
| (2) 3/8" x 1" Hex Bolt | (2) 1/2" x 6" Hex Bolt |
| (2) 3/8" x 1 1/4" Hex Bolt | (2) 1/2" Lock Washer |
| (4) 3/8" Flat Washer | (2) 1/2" Hex Nut |
| (4) 3/8" Lock Washer | (2) 1/2" Center Lock Nut |
| (2) 3/8" Hex Nut | |

COMPONENT BILL OF MATERIALS

Below is a photo showing the name of each component part.



STEP 1

Turn BASE TANK upside down. Place one CASTER PLATE into each caster cavity at the back of the tank being sure to align the holes in the CASTER PLATE with the threaded inserts molded into the BASE TANK cavity as shown below.



STEP 2

Place one CASTER on top of each CASTER PLATE being sure to align the holes in the CASTER to the holes in the CASTER PLATE and threaded inserts in the BASE TANK. Secure each CASTER to BASE TANK using (4) 5/16" x 3/4" hex bolts and (4) 5/16" lock washers as shown below. NOTE: DO NOT OVERTIGHTEN BOLTS. Tighten until lock washer is smashed flat.



STEP 3

Turn BASE TANK right side up again. Remove LID and pour a minimum 400 lbs. of sand (maximum 500 lbs.) into the BASE TANK. 60 lb. Sand tubes are available for purchase at any home builders supply store. DO NOT USE WATER- WATER MAY LEAK FROM BASE CAUSING IT TO BECOME UNSTABLE - DO NOT USE WATER!

Replace LID.



STEP 4

Secure POST to front of BASE TANK using the POST PLATE as shown below. Secure POST using (6) 5/16" x 3/4" hex bolt & (6) 5/16" lock washer. DO NOT OVERTIGHTEN BOLTS. Tighten until lock washer is smashed flat.



STEP 5

Check POST for level side to side as shown below. If POST needs adjustment, slightly loosen 5/16" hex bolts and adjust the POST until level. Tighten bolts when POST is level side to side.

NOTE: YOU WILL LEVEL THE POST FRONT TO BACK IN A LATER STEP.



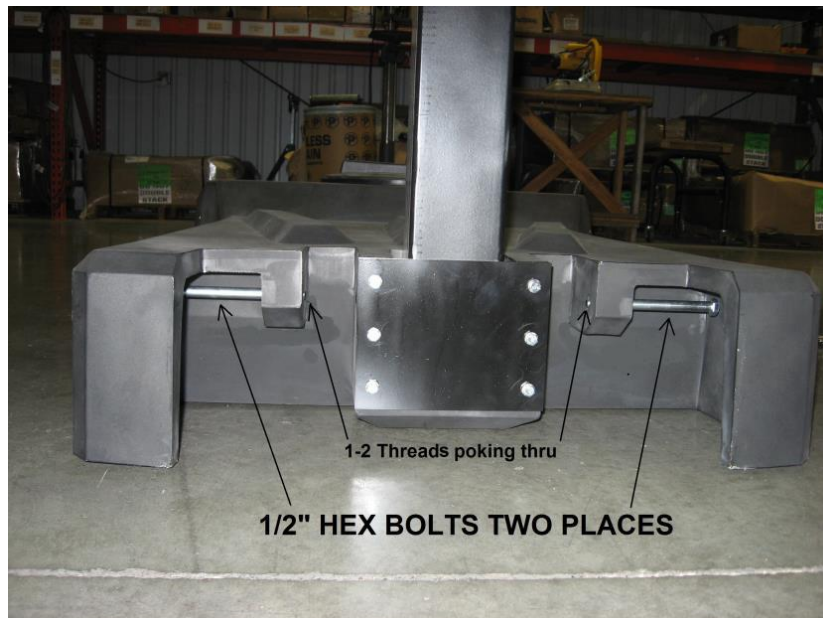
STEP 6

Assemble the WHEELS to the TRANSPORT HANDLE using (1) 1/2" x 6 1/2" hex bolt and (1) 1/2" center lock nut per WHEEL as shown below. You can identify the 1/2" center lock nuts by the small square indentation on the side of the nut. Regular 1/2" hex nuts do not have this mark. Tight 1/2" center lock nuts until they touch plastic handle. DO NOT OVERTIGHTEN!



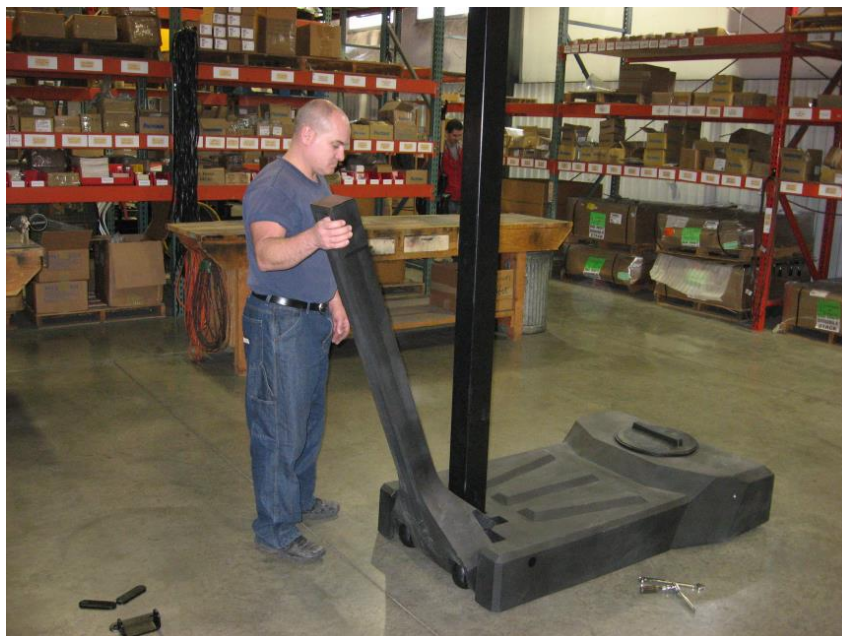
STEP 7

NOTE: You will need a ratchet with $\frac{3}{4}$ " socket and long extension for the following steps. Insert (2) $\frac{1}{2}$ " x 6" hex bolts into BASE TANK as shown below. Be sure to insert bolts with no more than 1-2 threads peeking out the opposite side of the hole for now.



STEP 8

Position TRANSPORT HANDLE into place as shown below. Push each $\frac{1}{2}$ " x 6" hex bolt through TRANSPORT HANDLE until 1-2 threads peek through the opposite side of the handle. TIP: It may help to use the ratchet to rotate the bolt to get it to feed through the hole in the handle.



STEP 9

THIS STEP IS VERY TRICKY. IT MAY TAKE SEVERAL ATTEMPTS!

Grab the AXELNUT with the threaded hole pointing down. Slide (1) AXEL NUT between the side of the POST and the BASE TANK as shown. Line up the threaded hole in the AXEL NUT with the $\frac{1}{2}$ " x 6" hex bolt. Use ratchet to thread bolt into AXEL NUT securing the TRANSPORT HANDLE to the BASE TANK. Repeat for opposite side. DO NOT OVERTIGHTEN. Tighten until AXEL NUT puts pressure on inside edge of BASE TANK.



Photo above shows sliding AXEL NUT down into place

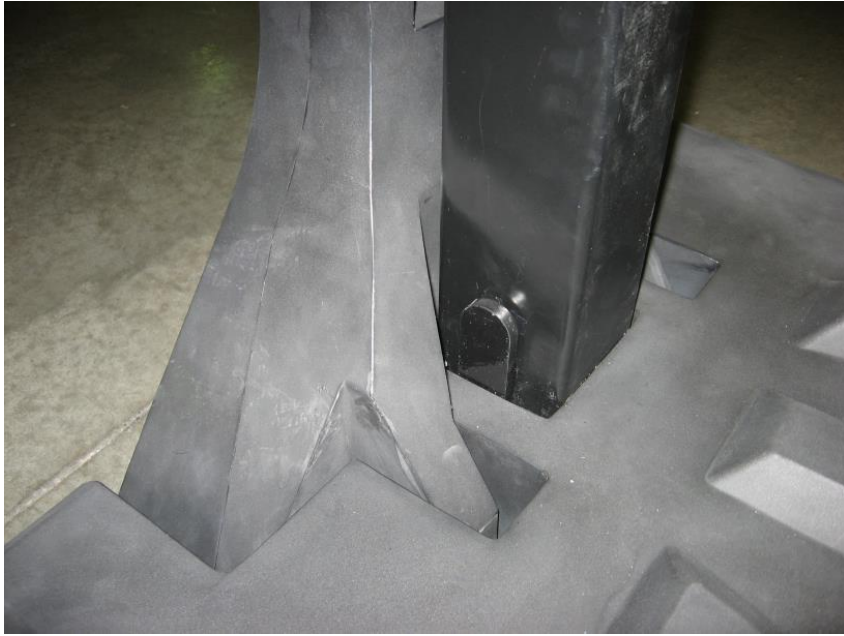


Photo above shows AXEL NUT properly secured.

After completing second AXEL NUT, TRANSPORT HANDLE should hinge forward properly raising unit onto front wheels.

STEP 10

Loosely connect BRACE CLAMP to back side of POST using (1) 4" square U-bolt, (2) ½" lock washer and (2) ½" hex nut as shown below. U-bolt should be approximately 20" above top of BASE TANK. Do not tighten nuts yet.



STEP 11

For this step please note the TANK BRACES smashed ends. One end is smashed shorter than the other. The LONG smash attaches to the back of the BASE TANK, the short end connects to the BRACE CLAMP.

Attach TANK BRACES to back of BASE TANK. Locate one threaded insert on the left and right sides of the BASE TANK near the back. Using (1) 3/8"x 1" hex bolt, (1) 3/8" flat washer and (1) 3/8" lock washer, loosely attach TANK BRACE (long smash end) to back of BASE TANK. Do not tighten bolts.



TANK BRACE- Long smash

STEP 12

Using (1) 3/8" x 1 1/4" hex bolt, (1) 3/8" flat washer, (1) 3/8" lock washer and (1) 3/8" hex nut, connect each TANK BRACE to the tabs provided on the BRACE CLAMP. Make sure to insert the hex bolt with threads pointing in toward center of the BRACE CLAMP. Flat washer goes on the bolt head side. Lock washer goes on hex nut side. Do not tighten bolts yet.



TANK BRACE- Short smash

STEP 13

Using a level, check the post front to back for plumb as shown in the photo below. You may need to slightly adjust where the BRACE CLAMP is located on the post up or down to get post perfectly level front to back. When it is level, tighten all bolts on the BRACE CLAMP including U-bolt and bolts at both ends of the TANK BRACES.



STEP 14

Test roll the unit. Stand in front of the BASE TANK and grab the top of the TRANSPORT HANDLE and pull the handle toward you. This will cause the front WHEELS to engage. This should allow you to roll the unit across the ground as if you were pulling a wagon. Carefully raise TRANSPORT HANDLE back to original position for play.

ASSEMBLY OF THE OMNIBASE UNIT IS COMPLETE. YOU SHOULD HAVE RECEIVED ADDITIONAL ASSEMBLY INSTRUCTIONS WITH THE OTHER COMPONENTS OF YOUR SYSTEM. FOLLOW THOSE INSTRUCTIONS TO COMPLETE THE SETUP OF YOUR UNIT. IF YOU HAVE QUESTIONS CALL FIRST TEAM AT 1-800-649-3688.