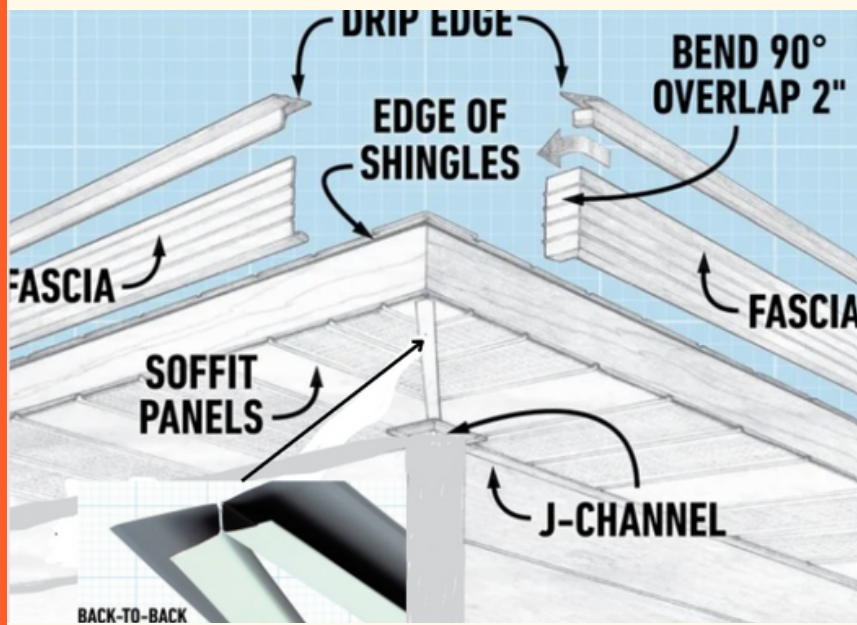


## Soffit & Fascia

Product specifications  
Installation Manual

Almost every home in Florida and most homes in the country have either aluminum or vinyl soffit and fascia.

We carry many of the most popular lines of both soffit and fascia. However, not all the parts we have are in this section, so please reach out to us and try to custom source your parts.



### INTRODUCTION:

Wrap the soffits and fascias on your home with prefinished aluminum and you'll never have to scrape, prime or paint those roof edges again. New aluminum soffits (the underside of eaves) and fascias (the vertical trim at the roof edge) won't peel or rot, so they'll last for decades with no maintenance.



### What is Soffit and Fascia ?

**Soffit and fascia** are two essential components of your home's roofing system. Soffit is the exposed undersurface of the roof overhang, while fascia is the narrow board that runs along the edge of the roofline. Together, they protect the roofline, attic, and overall structure of your home.

**Soffit** provides ventilation to the attic space and helps to prevent moisture buildup that can lead to mold and mildew. It is typically made from either vinyl or aluminum. **Fascia** on the other hand, serves as a barrier to protect the roofline and your home's structural integrity from water damage.

# OUR OFFERINGS

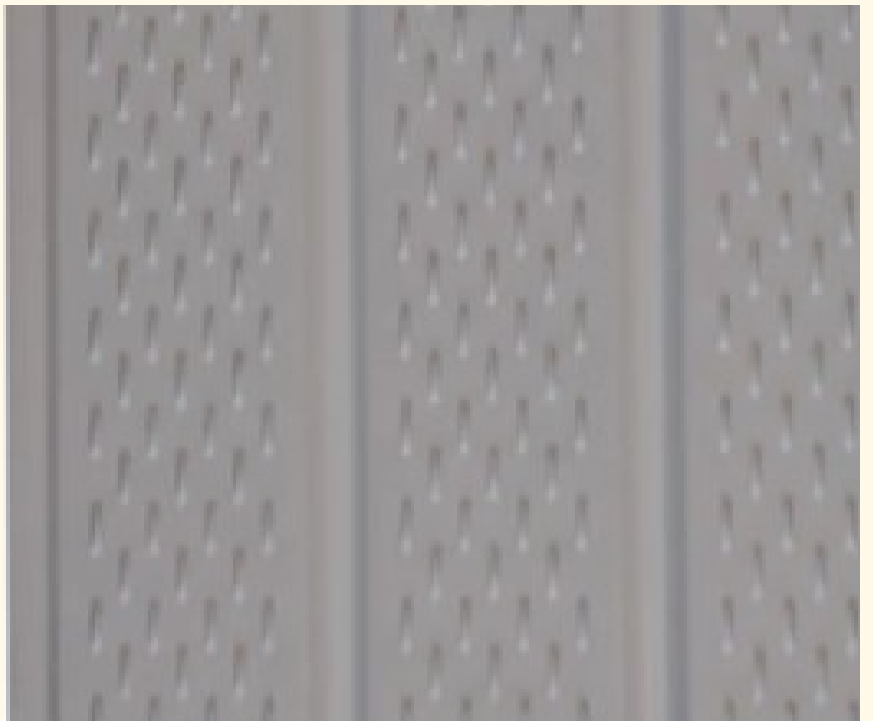
## Aluminum Soffit

### COLOR OPTIONS:



### AVAILABLE SIZE/DESIGN:

- 16 'Triple 5
- 16 'Quad 4
- 12 'Triple 4
- 12 'Double 6



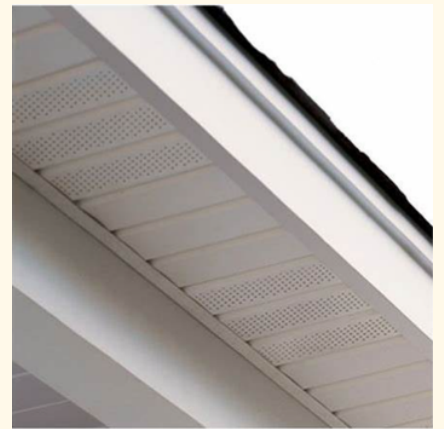
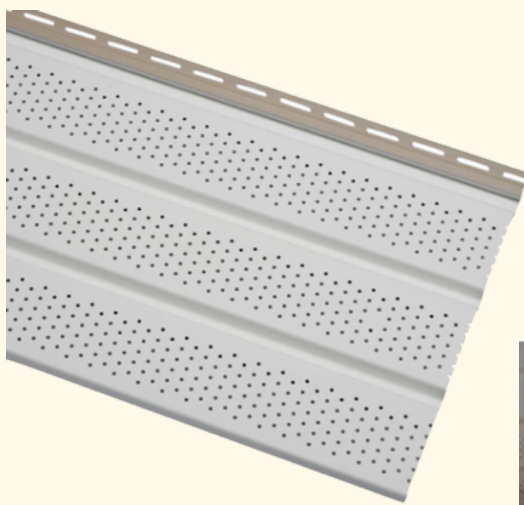
## Vinyl Soffit

### COLOR OPTIONS:



### AVAILABLE SIZE/DESIGN:

- Vinyl:
- 16 'Triple 4
  - 12 'Quad 4



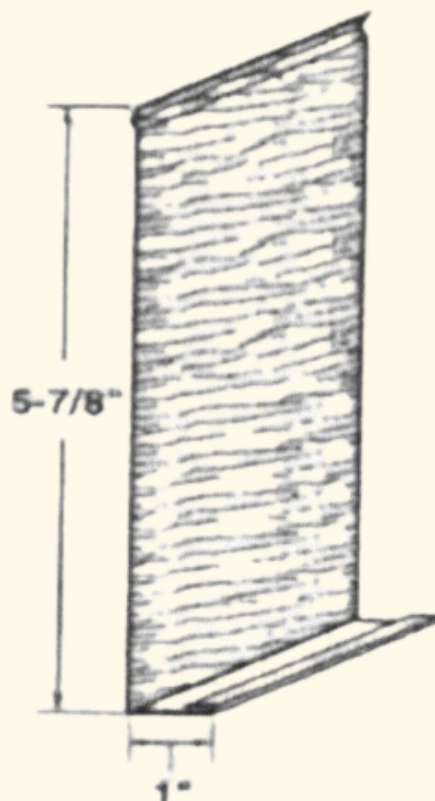
## Fascia

### COLOR OPTIONS:



### AVAILABLE SIZE/DESIGN:

- Fascia:
- 4 - 'Wood Grain 12
  - 6 - 'Wood Grain 12
  - 8 - 'Wood Grain 12



6" FASCIA  
(12' PC)

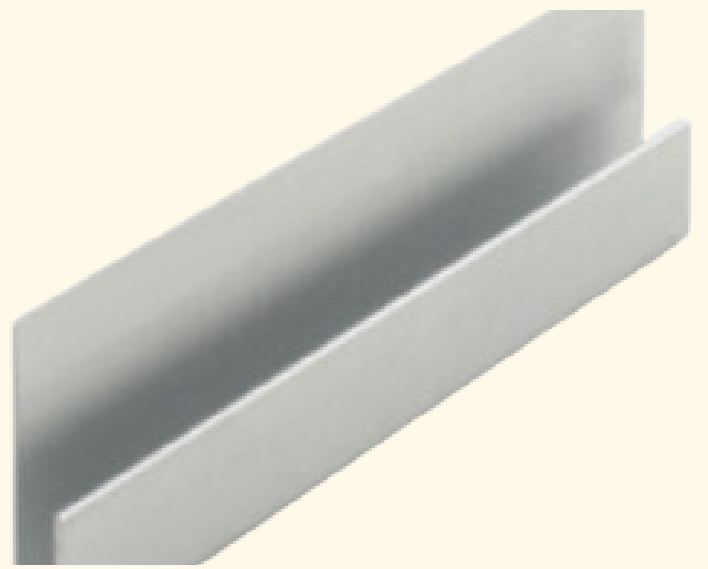
## Why is Soffit and Fascia Important?

Soffit and fascia play several vital roles in protecting your home. They provide ventilation to the attic space, which helps to prevent moisture buildup and potential mold growth. Soffit also protects the underside of your roof from weather-related damage, including rain, wind, and snow. By providing a barrier between the roofline and your home's interior, fascia protects the structural integrity of your home from water damage.

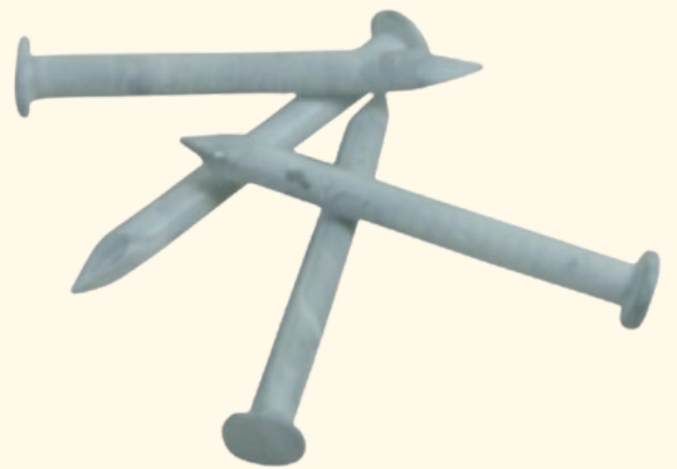
In addition, soffit and fascia are also essential in enhancing your home's aesthetic value. The right soffit and fascia design can transform your home from bland to beautiful, improving the curb appeal and overall value of your property.

## ADDITIONAL COMPONENTS

**J-channel** is a J-shaped length of aluminum that the soffit fits into against the house. Use it to anchor any edges of soffit not covered by aluminum fascia.



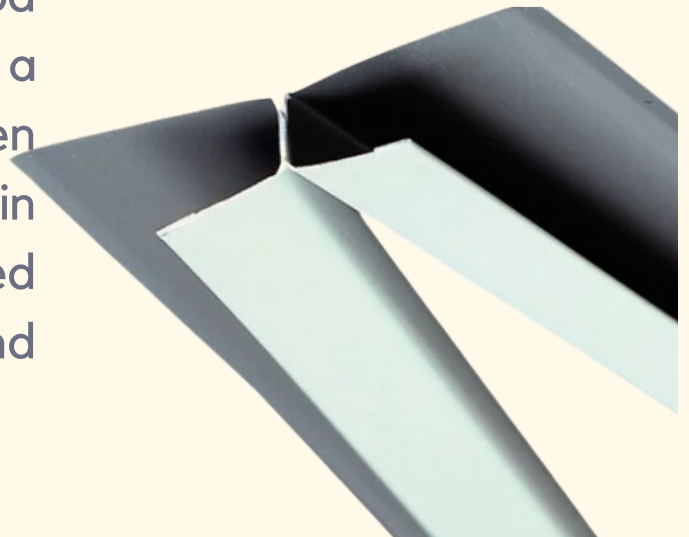
**Trim nails** are used to hold and set nails into soffit grooves and tight places. 1-1/4-inch trim nails are used to nail the outside of the panel to the bottom of the fascia.



## METHODS for JCHANNEL

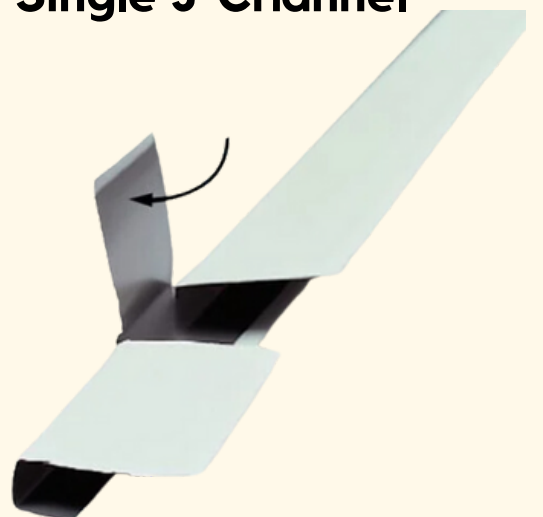
1). Back-to-back J-channel is a method of installing J-channel to create a smooth and finished transition between two surfaces. It is commonly used in soffit installation, but can also be used in other applications such as siding and roofing.

### Back To Back J-Channel



2). A single J-channel depends on the specific application.

### Single J-Channel





## Here are some additional tips for installing back-to-back J-channel

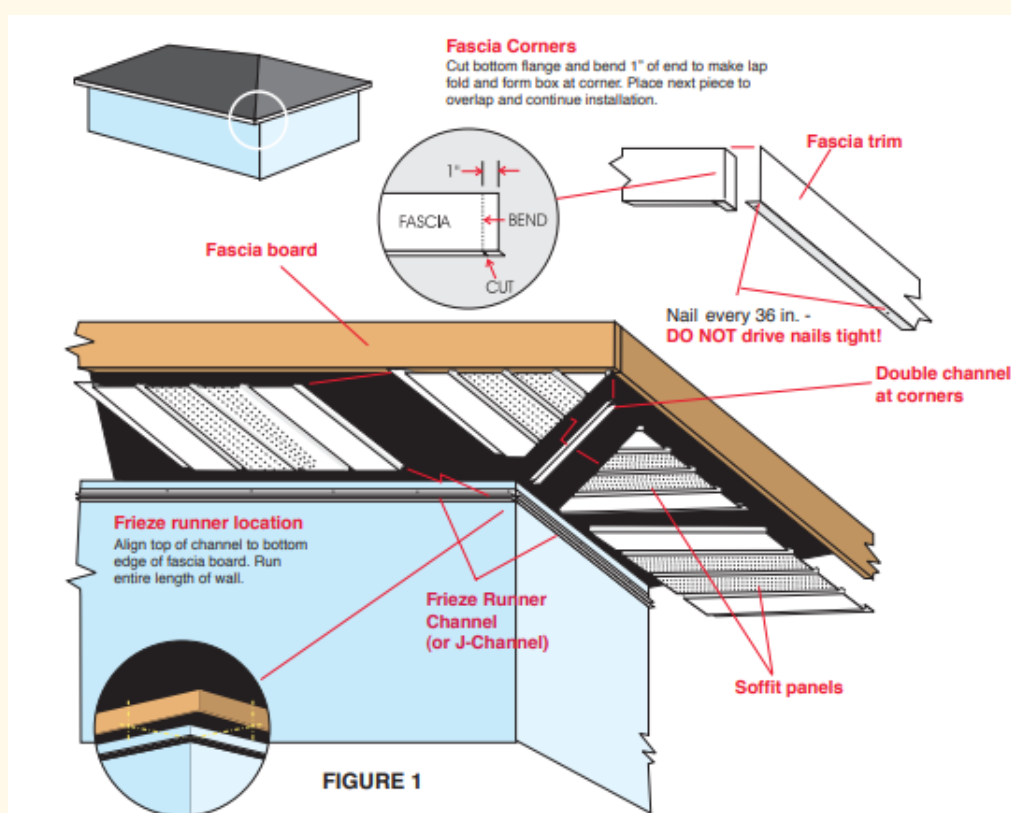
- Make sure that the J-channel is level and plumb.
- Overlap the J-channel at the seams by at least 1 inch.
- Seal all seams and joints with a caulk or sealant.
- Use a weather-resistant paint or stain to protect the J-channel.

## Here are some additional tips for nailing a single J-channel to the surface to support soffit:

- Use a level to make sure that the J-channel is level and plumb. This will help to ensure a proper seal and prevent water from seeping in.
- Use roofing nails that are the same color as the J-channel to help them blend in. This will make the nails less noticeable.
- Do not nail the J-channel too tightly, as this can warp the channel. Nail it just enough to secure it in place.
- Seal all seams and joints with a caulk or sealant to prevent water from seeping in. This will help to keep the soffit dry and prevent moisture damage.

## Do NOT Over Nail Fascia Trim.

**Recommended:  
One Nail Every  
24 in.**



## FAQs

### About Soffit and Fascia Installation

#### 1. What materials can be used for soffit and fascia installation?

Soffit can be made from wood, vinyl, aluminum, and other materials. Fascia is typically made from wood or aluminum. However, Aluminum fascia is much more durable than wood. It is resistant to rot, warping, and insect damage.

#### 2. What is the best way to ensure the safety of the installer during the installation process?

Always ensure that your ladder is stable and on solid ground before climbing to the roofline. Wear appropriate safety gear, such as a hard hat, gloves, and non-slip shoes.

#### 3. Can I install soffit and fascia on my own?

Yes, you can install soffit and fascia on your own. It is a relatively straightforward project that can be completed with basic DIY skills. UBIFL can help you achieve this. UBIFL offers a variety of soffit and fascia materials to choose from, so you can find the perfect look for your home.