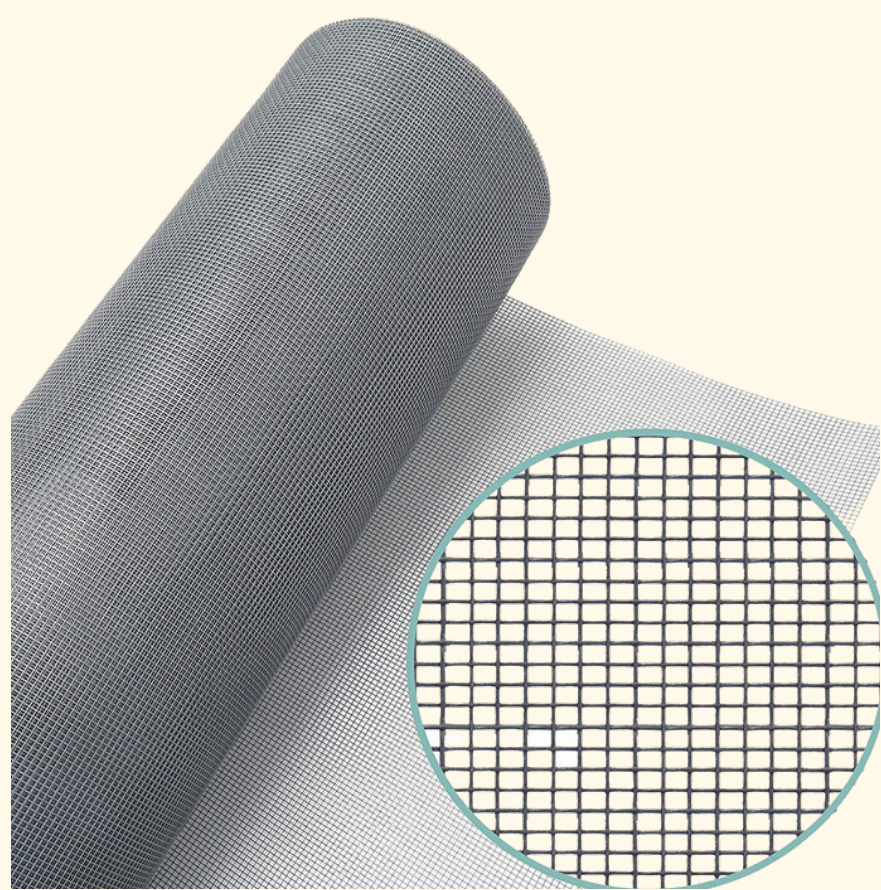


U-BUILD-IT™
ALUMINUM CENTERS
239-574-5455

Screen

Product specifications
Installation Manual

✦ Screen, screen, and more screen, the UBI line of screen is the best and safest group of screening products in the **WORLD!** The line we carry is **Ortho-Phthalate FREE!** No other line can make that claim! In addition, **Nonylphenol Free.** Not only does our insect screen set the standard for **Green Properties**, but it is also the most innovative screening product line in the world.



✦ **INTRODUCTION**

Welcome to UBI Screens, where innovation meets assurance! Screen, screen, and more screen – UBI offers the world's best and safest line of screening products, **Ortho-Phthalate and Nonylphenol FREE.** Our insect screens sets the **Green Properties** standard and is the most innovative in the world. The exclusive **P3** brand boasts a remarkable **7-year warranty**, unmatched in the **18/14 mesh** category. In the **SUPREME SCREEN** realm, the **P4** line delivers a whopping **10-year warranty**, backed by **350 years** of company legacy. **NOW THAT IS A WARRANTY!** Experience the UBI difference – redefining excellence in screens!



What is Screen?

Florida screen is a laminated fiberglass screen usually installed at the bottom of pool and patio enclosures to keep out grass clippings, dirt, insects, and other debris as well as moisture and insects. It also provides a level of privacy.

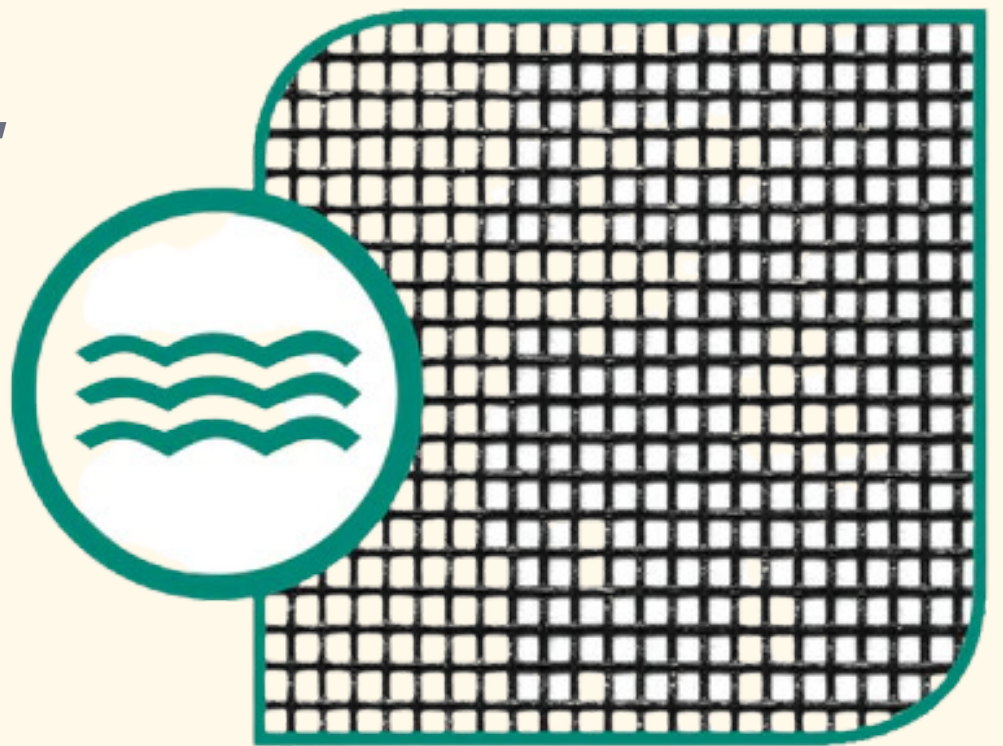


OUR OFFERINGS

18/14 Screen Roll

SIZE:

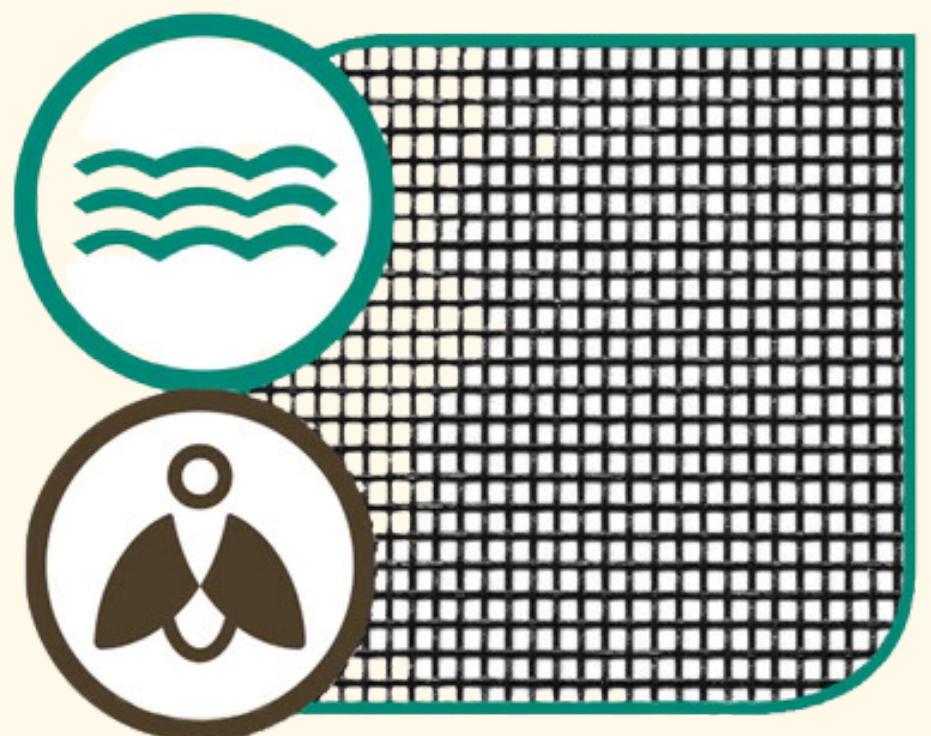
36", 48", 60", 72", 84", 96", 108"



20/20 Screen Roll

SIZE:

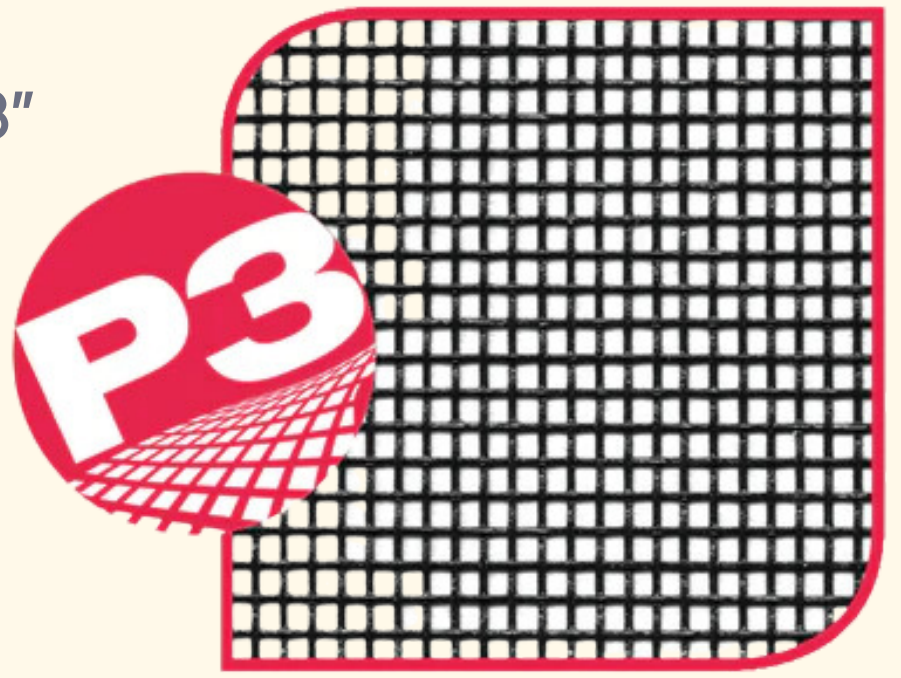
36", 48", 60", 72", 84", 96", 108"



18/14 Hybrid Screen Roll

SIZE:

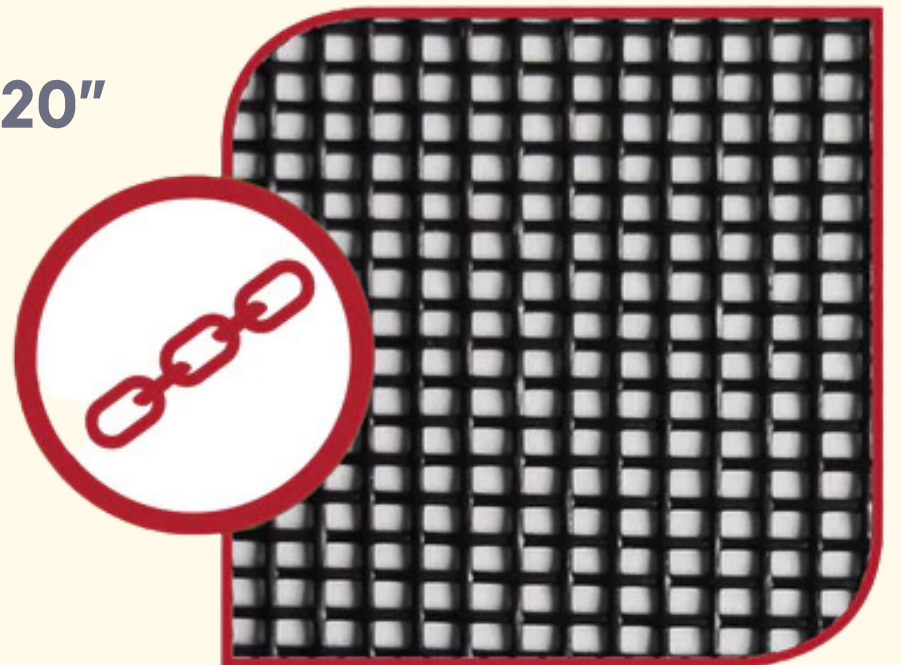
36", 48", 60", 72", 84", 96", 102", 108"



17/14 Supreme Screen Roll

SIZE:

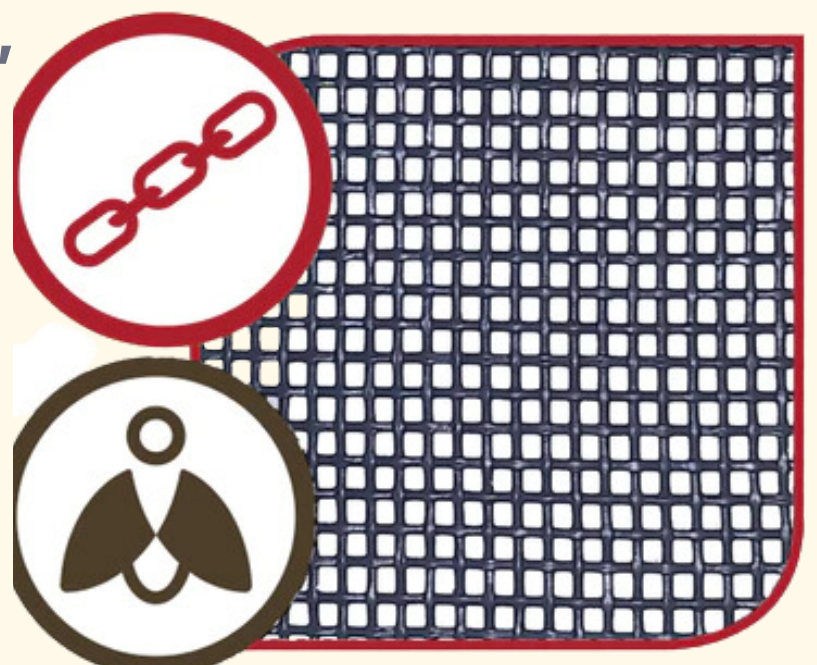
36", 48", 60", 72", 84", 96", 108", 120"



17/20 Supreme Screen Roll

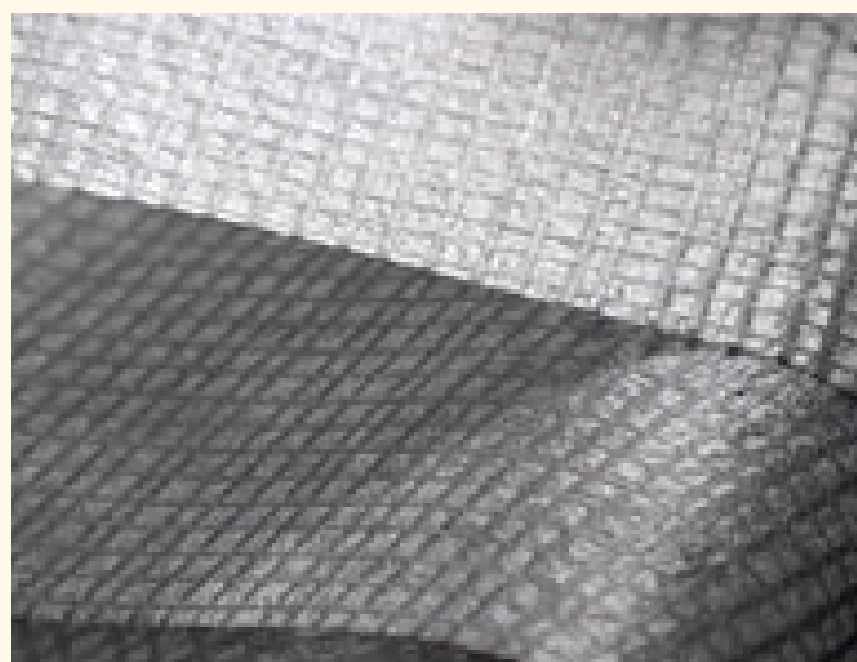
SIZE:

36", 48", 60", 72", 84", 96", 108", 120"

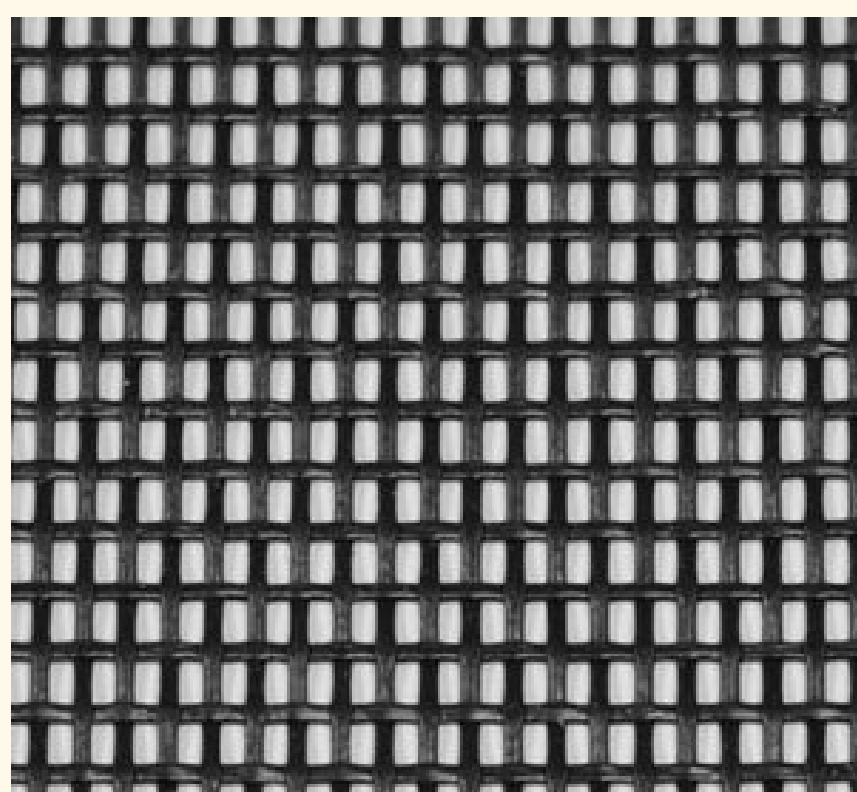


SPECIALTY SCREEN

Florida Glass 36" Cut L. F.



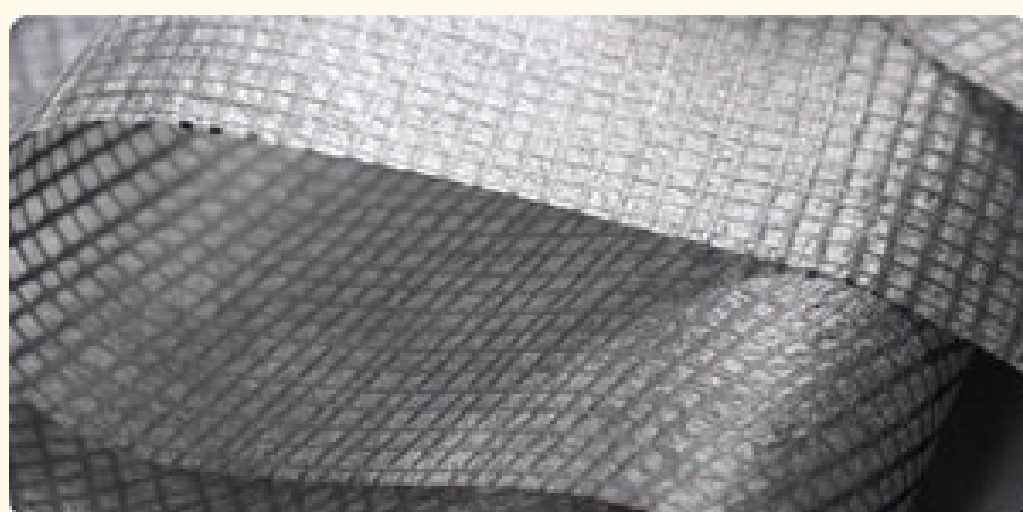
Pet Screen Piece 36" Cut L.F.



Florida Glass Roll

SIZE:

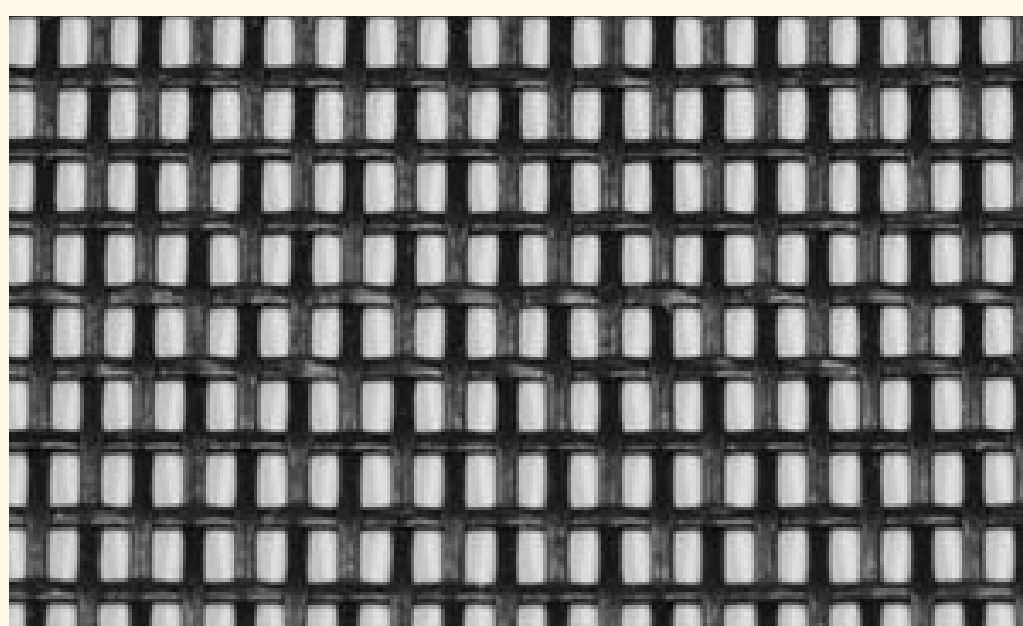
36",72"



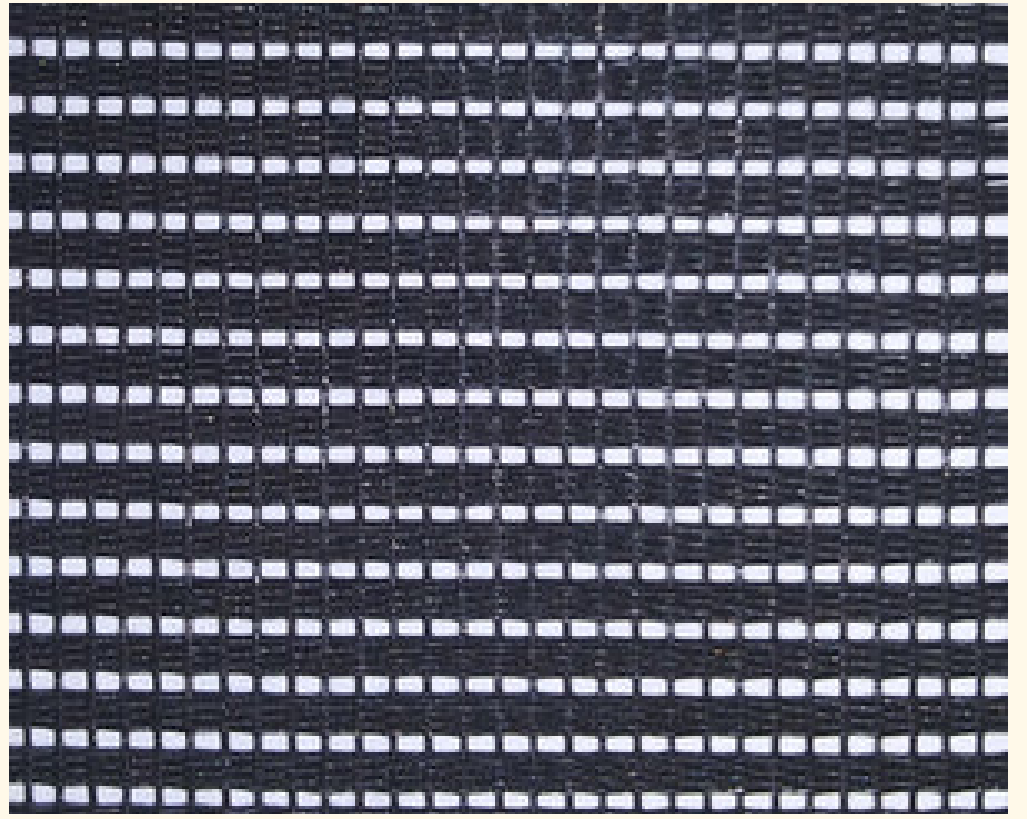
Pet Screen Roll

SIZE:

36",48"



72" Solar Screen 75% By the L.F.



Why Screen is Important?

Screens provide a barrier between your windows and the elements, so they can prevent your windows from collecting dust, dirt, and grime—but only when your screens are clean. If they are dirty, your windows will get splattered with grimy water during the next storm.

What is the Difference Between Aluminum and Fiberglass Screens?

Fiberglass is generally less expensive as compared to aluminum. It also does not dent when pushed or hit. Fiberglass however, is somehow darker than the aluminum mesh, this means that it gives it a darker external appearance and therefore reduces the amount of light getting into the room. Another disadvantage of fiberglass over aluminum is that it tends to degrade with time due to long exposure to UV light. This quality also makes it break and fray easily and hence does not last as long as aluminum. Fiberglass screens are sold in 100 foot rolls of varying widths ranging from 18 to 120 inches. Aluminum screens are also purchased in 100 foot rolls; however, the range available is limited as compared to fiberglass,

ADDITIONAL COMPONENTS

A **spline roller** is a tool made for screen installation that rolls spline into its channel to hold the screen in place. Spline rollers use a rolling wheel that fits over the spline to press it down.



Sharp utility knife can easily cut through fiberglass on a roll. The thinner type of fiberglass is cut with a sharp knife and a straight edge can be used for guiding it accurately.



Flat spline is a materials that holds the screen mesh securely in the screen frame channel.



TYPES / METHODS for Spline Roller and Flat Spline

Hold the screen material taut with one hand.

With your other hand, use the spline roller's concave wheel (the one that curves inwards) to press the spline into the groove of the frame. Roll the tool along the groove, pushing the spline into place. This will also press the screen material into the groove. Make sure the screen remains taut and free of wrinkles as you work.



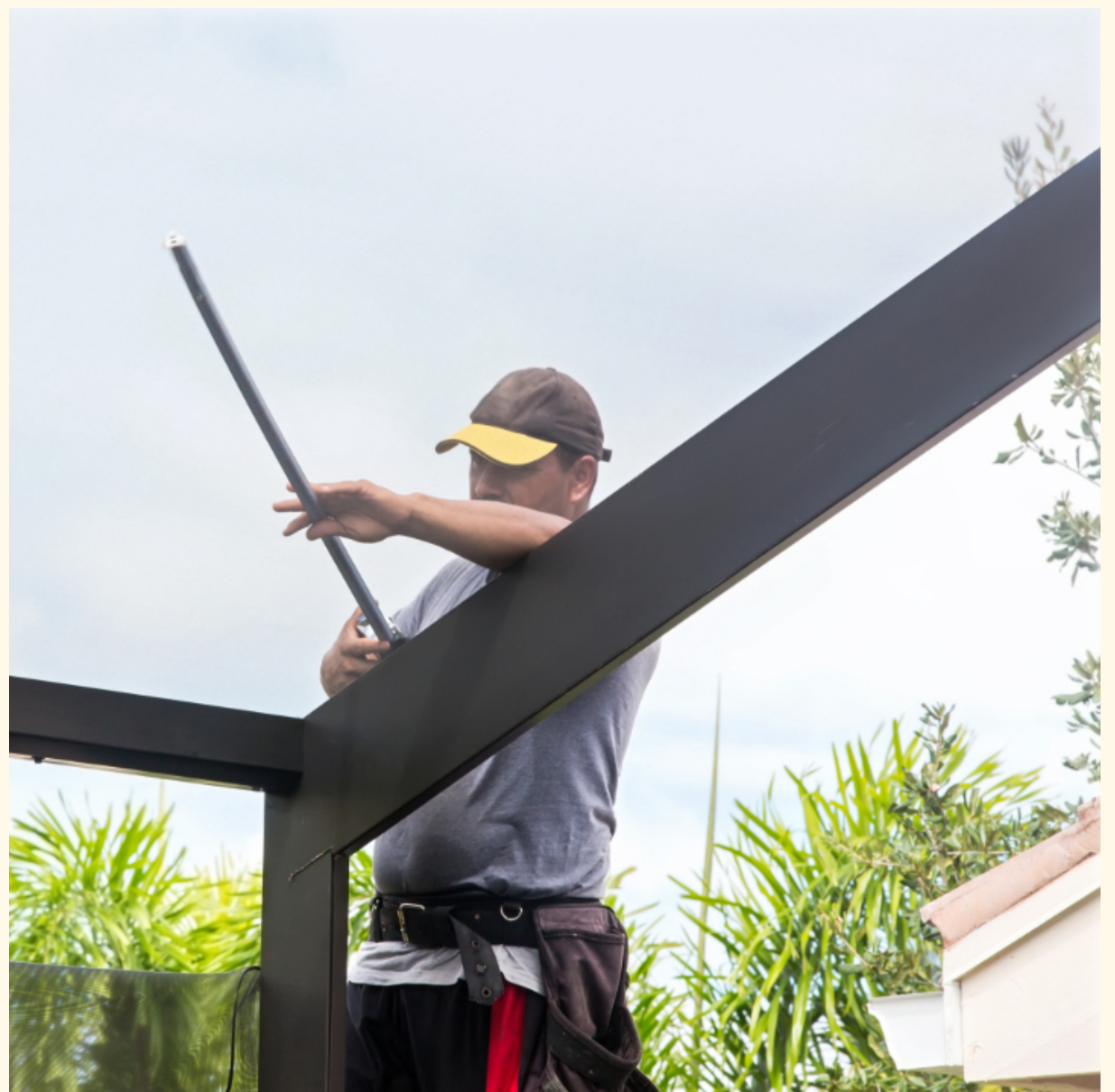
Here are some additional tips for installing Flat Spline:

- Line the flat spline along the groove in the frame, on top of the screen.
- Insert the spline in the groove using the concave or flat end of a spline tool.
- Press the spline into the groove slowly and firmly.
- Cut off any excess spline and screen material.
- Place the screen back in the window or door.

Do-It-Yourself

How to Install Screen Safely

Screen installations should never be done alone. Always ensure more than one worker is involved in the process. Make sure workers follow safety procedures – especially while working at heights – and wear the proper PPE. Screen media is sharp, and it can be harmful if protection isn't used. Some screens, however, are lighter and manufactured with a shroud of metal to cover the hooks to heighten safety.



FAQs

About Screen Installation

1. What materials can be used for Screen installation?

- **Fiberglass Screen:** This type of screen is usually the least expensive, but it is flexible and easy to install because it won't crease
- **Metal Screen Mesh:** More durable than fiberglass, this type of screen is usually made with aluminum
- **Pet Resistant Screen:** This type of screen is made out of a plastic mesh that is puncture and tear-resistant to protect against potential pet damages

2. How often should I do maintenance to my screens?

The short answer to the posed questions is whenever your screen appears to be broken, you need better protection, or you are ready for an upgrade.

3. What is your screen made of?

The product of our screen is usually made of Aluminum or fiberglass mesh screen.