



**U-BUILD-IT™**  
**ALUMINUM CENTERS**  
**239-574-5455**

## **Pool cage accessories**

Product specifications  
Installation Manual

Clips, coil, castings, dog doors, cables, and spline, all the items used when building or repairing your pool cage. Look here for all the details and more for these hard-to-find parts and pieces for your screen enclosure.



### **INTRODUCTION**

Pool cages, also known as pool enclosures, are structures that protect swimming pools from insects, debris, and inclement weather. One crucial component of these pool enclosures is the variety of screws used in their construction. Screws play a vital role in securely affixing screens to the cage frame, connecting various frame components, and serving as anchor points for other components within the pool cage, including doors, windows, and roof panels. They also come into play when replacing damaged or corroded fasteners during repairs or routine maintenance.



### **What is Pool cage accessories?**

**Pool Cage Accessories** offer a unique way to enhance your pool enclosure. By choosing the right accessories, you can maximize the functionality and aesthetic appeal of your pool cage, making it a more enjoyable place to spend time. Whether you're looking to create a comfortable space for relaxation, a functional space for swimming, or a stylish space for entertaining, pool cage accessories can help you achieve your goals.

# OUR OFFERINGS

## Clip

**SIZE:** 3"x3", 4"x4

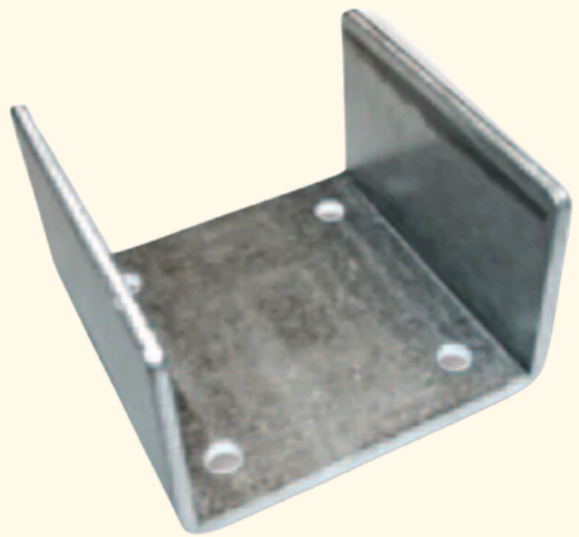
**TYPE:**

Anchor Clip w/o Ears  
Clip Capri 4 Hole  
Clip 2" x 3"



## Anchor Clip w/o Ears

**SIZE:** 3x3, 4x4



## Clip Capri 4 Hole

**Color Option:**



## Clip 2x2

**Color Option:**



**Design Option:**

3 Hole / 6 Hole / Blank



## Clip 2x3 5 Hole - Place Holder

## Coil

### Coil .024 Smooth

Color Option:



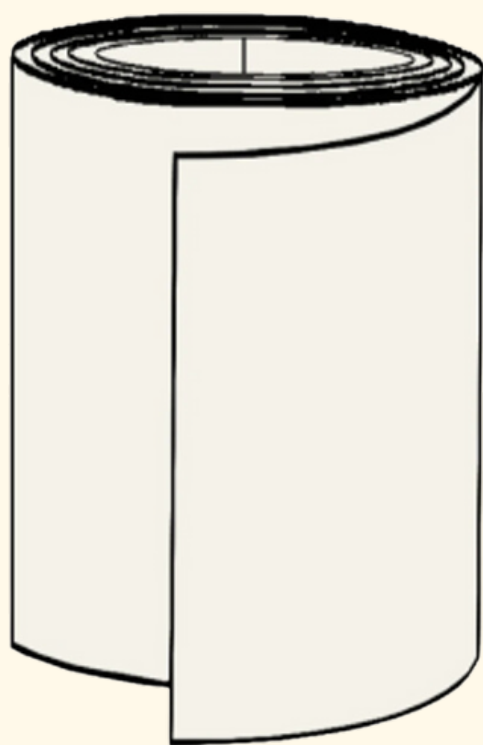
WHITE



BRONZE

SIZE: 16" / 24" / 36"

TYPE: K.P. Channel Roll Form 12  
K.P. Channel Extruded 12



## K.P. Channel Roll Form 12

Color Option:



WHITE



BRONZE



## K.P. Channel Extruded 12

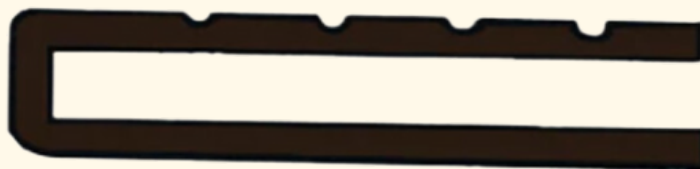
Color Option:



WHITE



BRONZE



## Casting

### 2" x 2" Post Casting

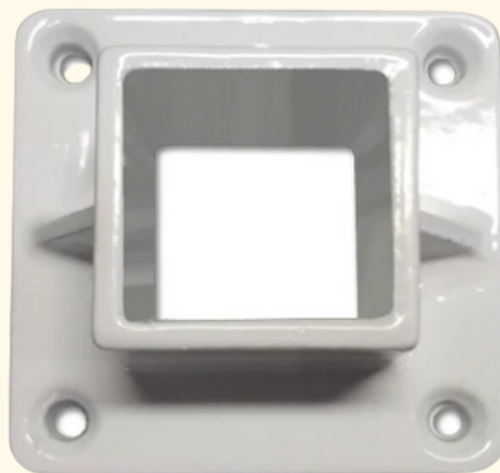
Color Option:



WHITE



BRONZE



## Pet Door

SIZE:

- Large Pet Door ( Small (6" x 8") for Small Dogs and Cats (5-25 pounds). R.O. = 6 13/16" x 9 5/8" )
- Medium (11" x 13") for Small and Medium size Dogs (20-60 pounds). R.O. = 11 11/16" x 14 1/4" )
- Large (13" x 19 3/4") for Medium and Large size Dogs (50 plus pounds). R.O. = 14 3/4" x 22" )

Color Option:



WHITE



BRONZE



## Cables

### Pool Cage Cable

Color Option:



SIZE:

12' / 14' / 16'

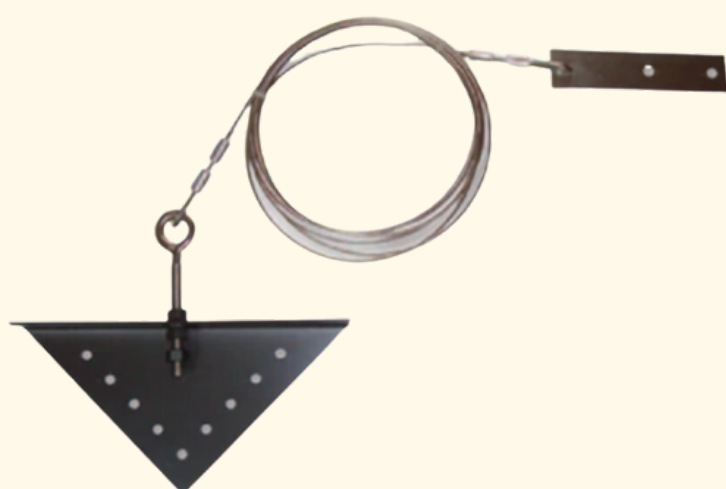


## Custom Cables

Color Option:



CUSTOMIZE SIZE:



## Spines

TYPE:

Flat Spline

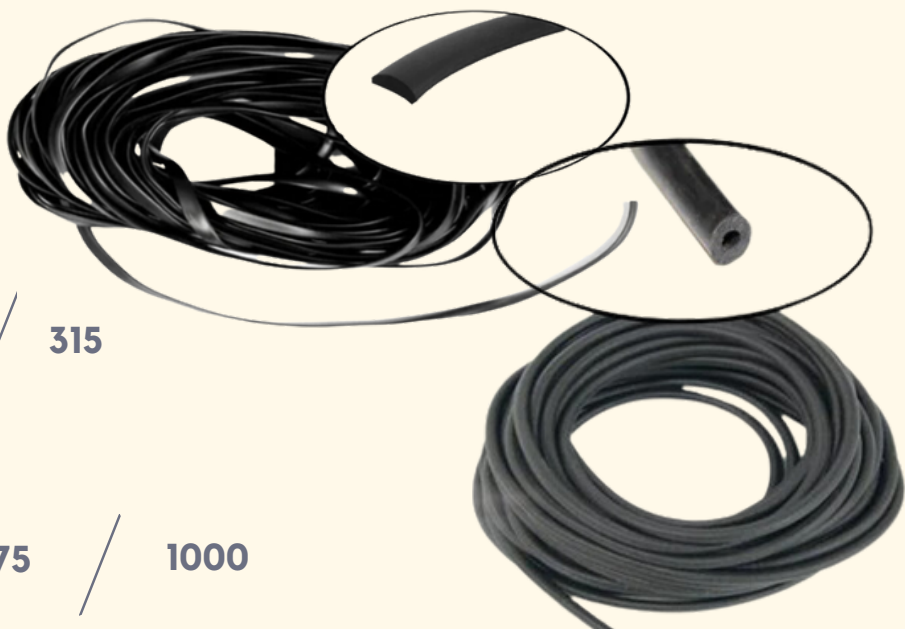
Round Spline

Thickness:

305 / 310 / 315

Available Length:

25 / 50 / 75 / 1000



## Why is Pool Cages Accessories Important?

They provide protection against foreign materials, bugs, and harsh sunlight from directly hitting your pool. They also prevent birds from landing and defecating in the pool water, preserving its cleanliness and ensuring a safer swimming environment.



## Do-It-Yourself

### How to Install Pool Cage Accessories Safely

If you are planning to install Pool Cage, there are several safety precautions to keep in mind. Always ensure that your ladder is stable and on solid ground before climbing to the roofline. Wear appropriate safety gear, such as a hard hat, gloves, and non-slip shoes. It is also essential to have someone else present while you are working on the roofline.

Here are the steps to follow when installing Pool Cages Accessories System:

- Assemble the track. The first step is to assess the pool area and assemble the rails that will serve as the bottom of the enclosure.
- Add enclosure panels, pins, and locks
- Install faces, plates, and doors.
- Add harassments.
- Finish the track.
- Cleaning and Wrapping up

## FAQs

### About Pool Cages Accessories Installation

1. What materials can be used for Pool Cages Accessories installation?

The most common types of base materials being used are fiberglass material and polyester material. The fiberglass material has a life expectancy of 7 to 9 years and the polyester can last up to 10 years.

2. What are Pool Cages made of?

Our pool enclosures are made with ultra-durable screens that come backed by a 10-year warranty for added peace of mind. And to help ensure your pool enclosure remains functional for years to come

3. Can I install Pool cages on my own?

You cannot build all types of pool enclosures yourself. The most common DIY kits include inflatable domes, small retractable domes, and some basic aluminum structured mansard.