



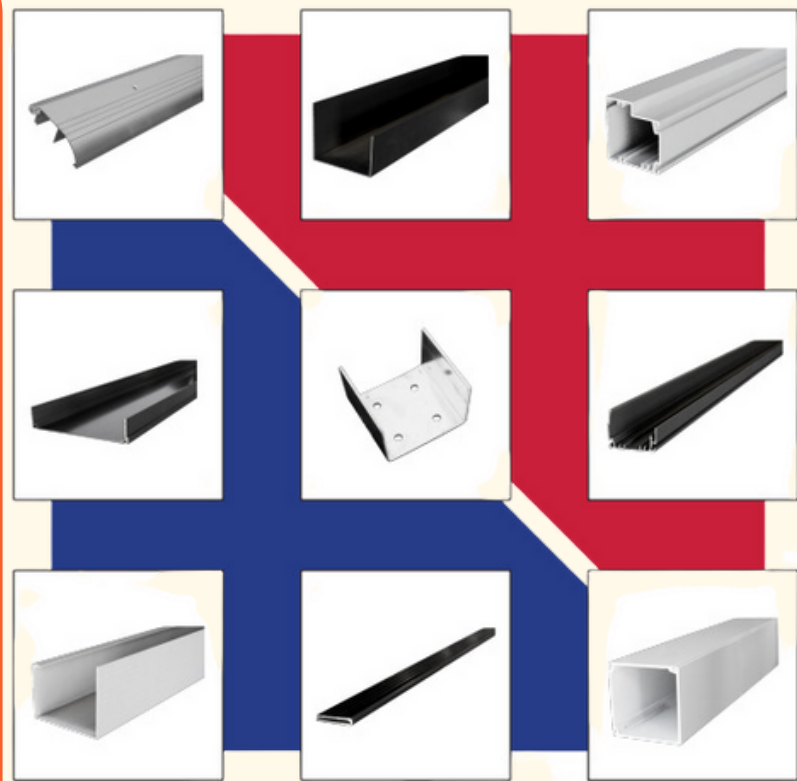
**U-BUILD-IT™**  
**ALUMINUM CENTERS**  
**239-574-5455**

## **PATIO**

Product specifications  
Installation Manual

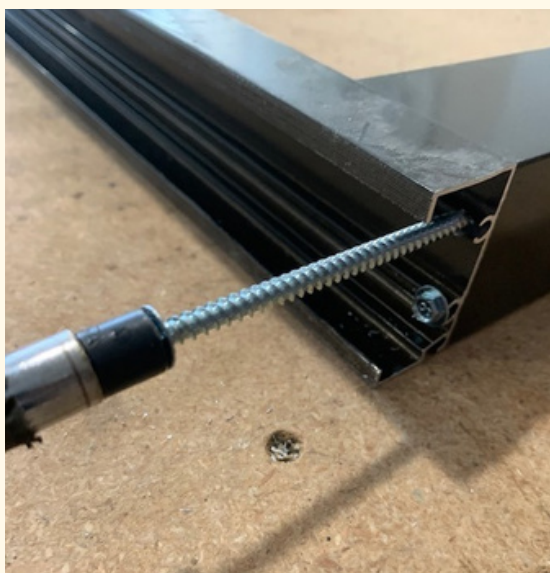
✦ Information in this manual will help you to:

- Better understand our product line.
- Give you guidelines for an easier planning process.
- Help make the installation easier..



## ✦ INTRODUCTION

Aluminum outdoor patio covers are the perfect protection from overbearing sun and/or pounding rain on Vancouver Island and the Sunshine Coast. Heavy gauge aluminum construction allows for your aluminum patio cover to be affixed to fascia under the soffit or roof mounted, allowing your gutter system to easily move rainwater away from your home and foundation.

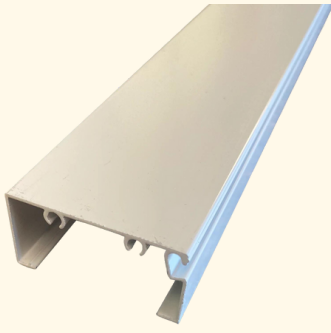


### **What is Patio?**

**PATIO** are shapes of aluminum that can be solid, semi-hollow, or hollow. Many everyday products get their form and function from extruded aluminum. They're used in everything from home appliances to automobiles. Customers value aluminum extrusions for their strength, stability, corrosion resistance, and lightness. Aluminum extrusions make consumer products like patio furniture and speedboats lighter, and also increase the durability of items such as sports equipment.

# OUR OFFERINGS

## ✦ Patio W/B



**Patio 1 X 2 White 24'**

COLOR OPTIONS:



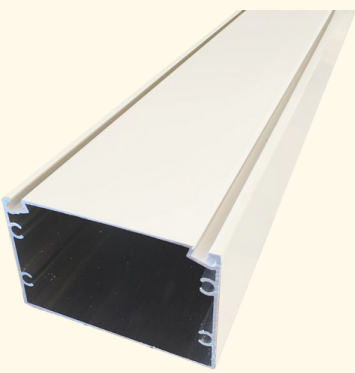
**Patio 2 X 2 Bronze 24'**

COLOR OPTIONS:



**Patio 2 X 3 Bronze 24'**

COLOR OPTIONS:



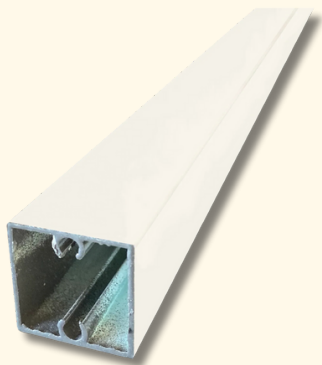
**Patio 3 X 2 Length 24' White**

COLOR OPTIONS:



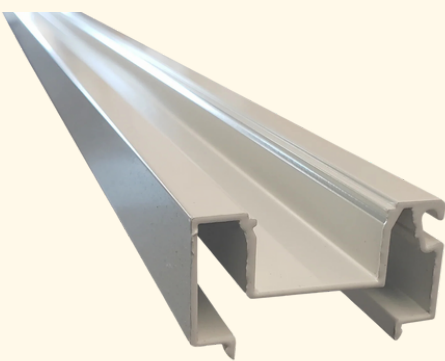
Max 24' & 30' Lengths (Available for purchase by the foot - in store purchases only) - Max 8' for online orders. Sold per foot.

## ✦ PATIO RAILING SYSTEM



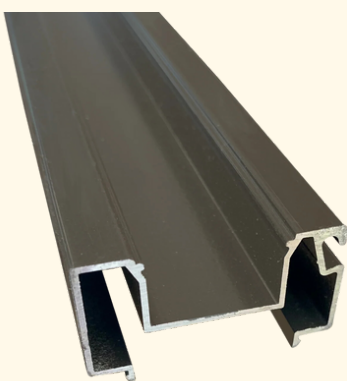
**Picket 1 X 1 Length 23' White**

COLOR OPTIONS:



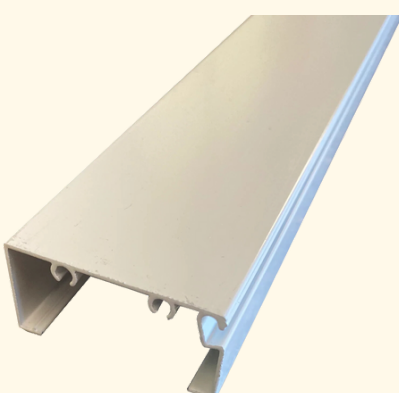
**1x2 snap - 25' length**

COLOR OPTIONS:



**1x3 snap - 25' length**

COLOR OPTIONS:

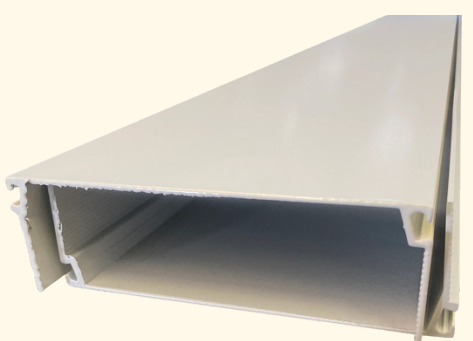


**Patio 1 X 2 White 24'**

COLOR OPTIONS:

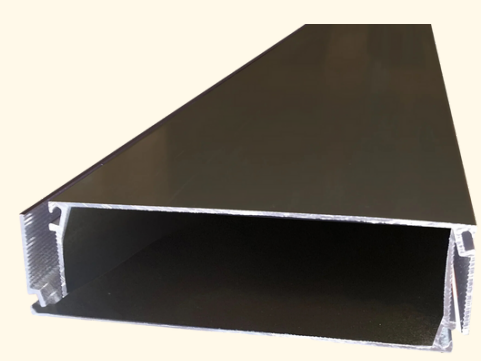


**Beam W/B**



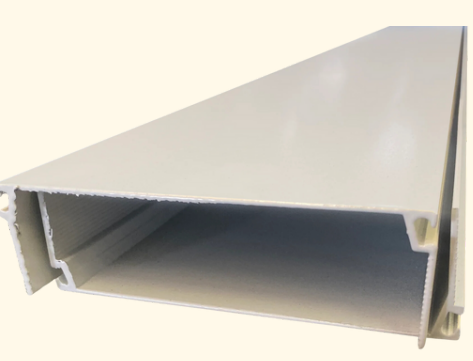
**SMB 1 X 6 White 20'**

COLOR OPTIONS:



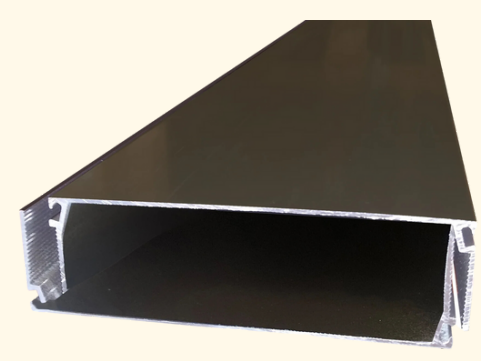
**SMB 1 X 6 Bronze 24'**

COLOR OPTIONS:



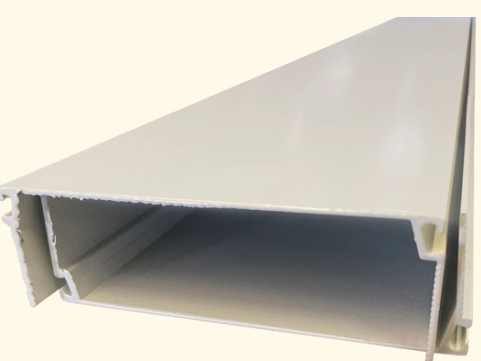
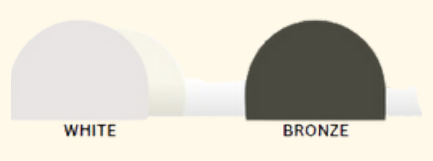
**SMB 1 X 8 White 30'**

COLOR OPTIONS:



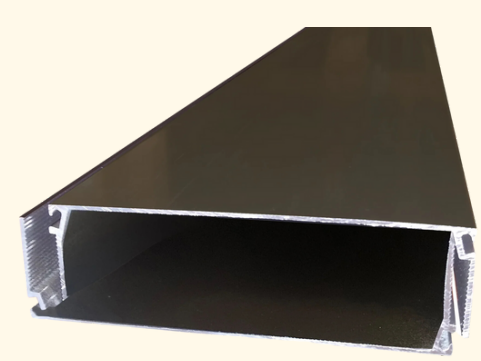
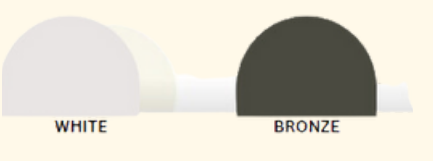
**SMB 1 X 8 White 24'**

COLOR OPTIONS:



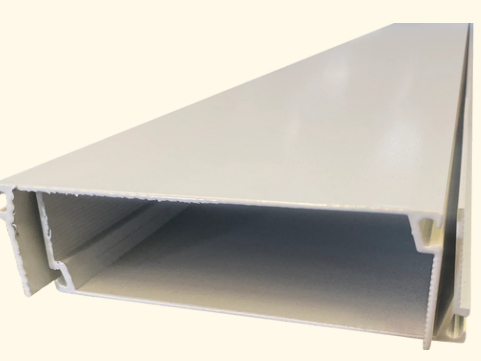
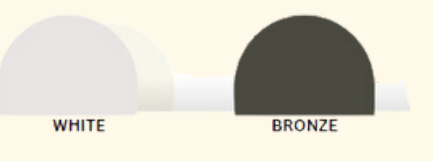
**SMB 1 X 6 White 30'**

COLOR OPTIONS:



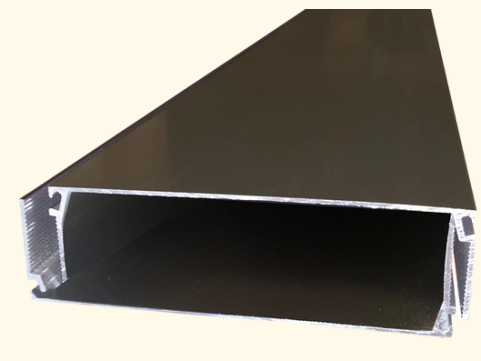
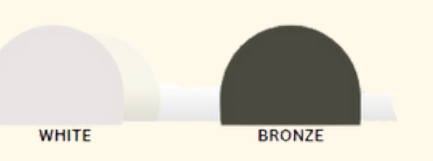
**SMB 1 x 4 Size 24' and Size 30'**

COLOR OPTIONS:



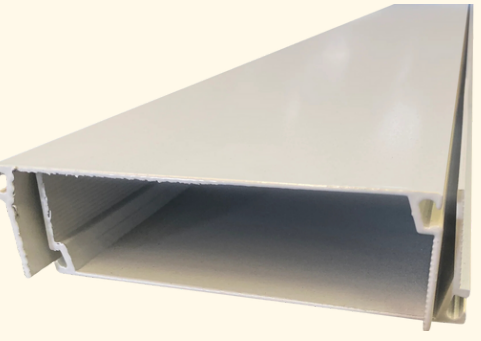
**SMB 1 x 5 Size 24' and Size 30'**

COLOR OPTIONS:



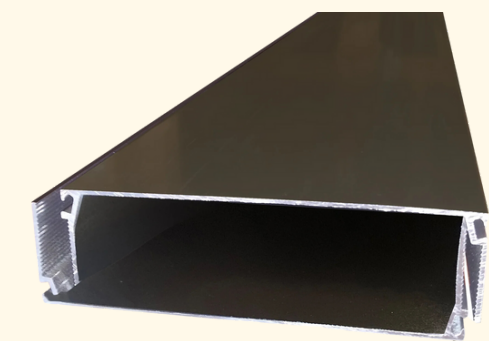
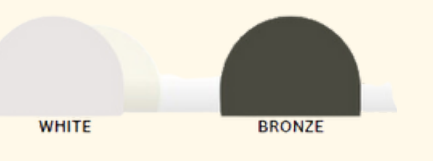
**SMB 1 x 7 Size 24' and Size 28'**

COLOR OPTIONS:



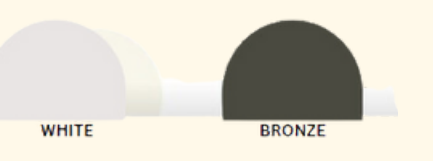
**SMB 1 x 9 Size 24' , 36'**

COLOR OPTIONS:



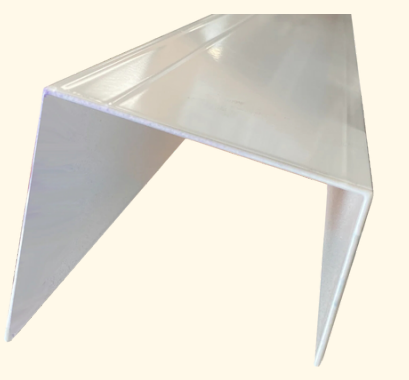
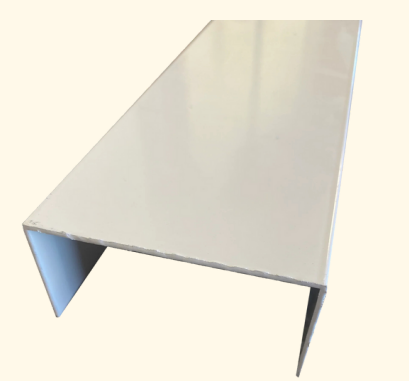
**SMB 1 x 10 Size 24' , 40'**

COLOR OPTIONS:



( in-store purchases only)

★ **Receiving Channels**



**Receiving Channel 3 X 1 1/2 X .050 White**

Size: 12' and 24'

COLOR OPTIONS:



**Receiving Channel 3 X 1 1/2 X .050 White**

Size: 8', 12' and 24'

COLOR OPTIONS:



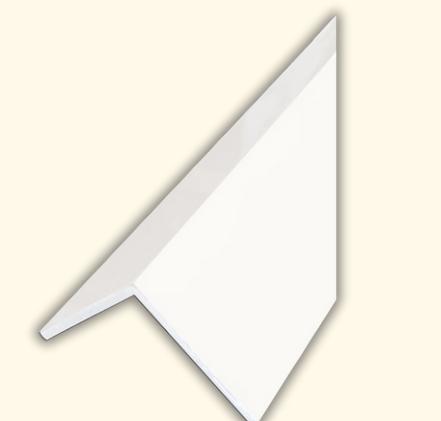
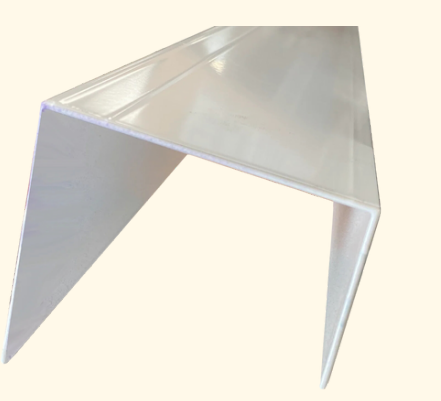
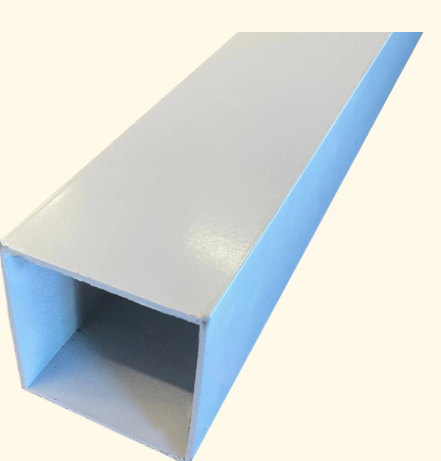
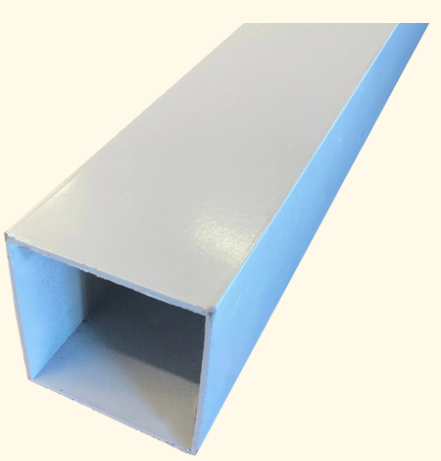
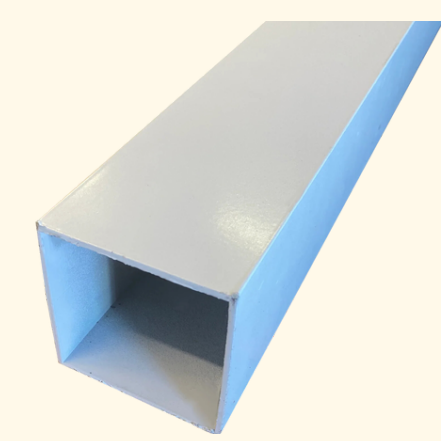
**Box Header 24' and 30'**

COLOR OPTIONS:



Description: can request 12'  
Can ship Receiving Channel 2 X 1 1/2 X .050 size 8', rest for in-store purchases only.

★ **Post Extrusions**



**Sq Tube 3 X 3 X 1/8 x 8' SPLINE GROOVE**

Size Option: 8', 10', 12' 24', 30'

**Sq Tube 4 X 4 X 1/8 x 8', SPLINE GROOVE**

Size Option: 8', 10', 12' 24', 30'

COLOR OPTIONS:



**Sq Tube 6 X 6 X SPLINE GROOVE**

Size Option: 24', 30'

(special order 1-2 days)

**Box Header 3" Size 24' Length**

COLOR OPTIONS:



(should be in the receiving channel section)

**Angle 2 X 2 X 1/8 White**

(Should be in the angle category)

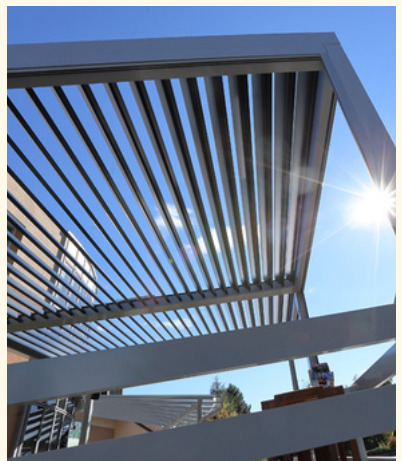
COLOR OPTIONS:



(in-store purchases only aside from the angle that can be ordered online up to 8')

## Why is Patio are Important?

A patio made of aluminum is a great addition to your home ! Aluminium patios are strong and durable, and they also look very appealing. No matter what type of patio you choose, it will enhance the beauty and value of your outdoor space.



## Do-It-Yourself

### How to Install Patio Safely

**Here are the steps to follow when installing Patio :**

- Determine the size and location for your patio.
- Consider the design that you would like.
- Calculate the amount of supplies you will need
- Purchase the necessary materials.
- Measure out and mark the dimensions of the patio.
- Excavate the site with a shovel.
- Tamp down the soil.
- Lay down the gravel or crushed rock.
- Cover the rock (or soil) with the landscaping fabric.
- Install the border
- Partially fill in the site with sand and then screed it level.
- Lay the pavers into place.
- Spread a layer of sand over the bricks.
- Gently spray the pavers with water.

## FAQS

### About Patio Installation

#### 1. What materials can be used for Patio extrusion installation?

The most commonly used system is the 2" x 2" extruded aluminum porch and patio screening system. These frames have a.062" thick aluminum wall making them exceptionally strong and durable when compared to products at your local hardware store.

#### 2.How often should I do maintenance to my screens?

Regularly inspect the extrusion for signs of damage, such as cracks, dents, or corrosion. If you notice any issues, address them promptly to prevent further deterioration.

#### 3. What is your Patio made of?

We use Aluminum, a durable and lightweight material that can create a sound of rain when wet. And also Wood, a natural and versatile material that can match different styles and designs.