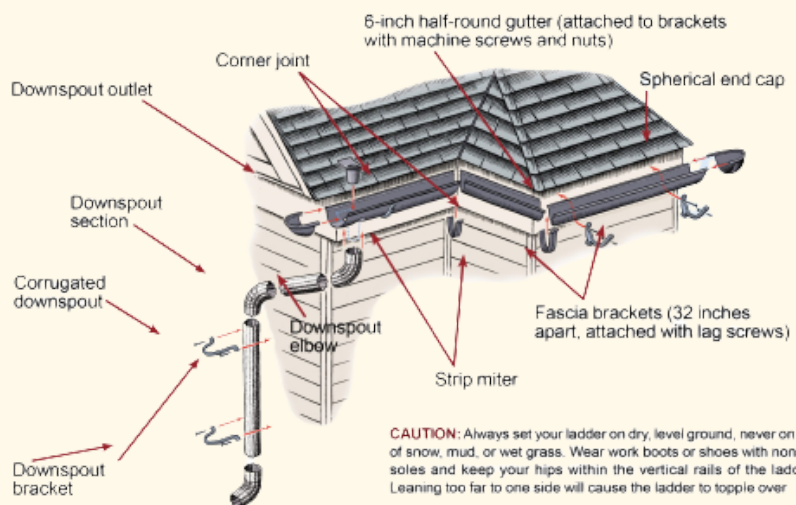


U-BUILD-IT™
ALUMINUM CENTERS
239-574-5455

Gutter and Rain System
 Product specifications
 Installation Manual

Most people don't think about gutters until the rainy season; get ahead of the crowd and find your solution today, while it's dry out!

But be assured, UBI always has these products on hand, **RAIN or SHINE!**



INTRODUCTION

Gutters provide important functions for home protection by collecting and diverting runoff water from your roof and safeguarding its foundation. Without a proper guttering system, your home could be exposed to leaks and premature wear of decks and siding.



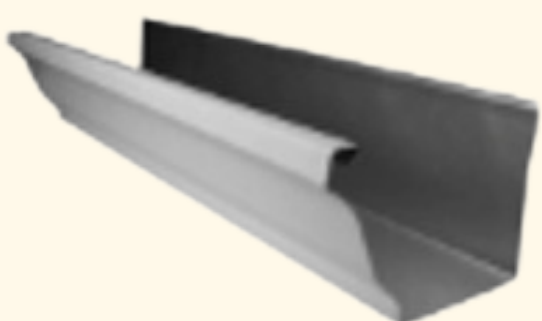
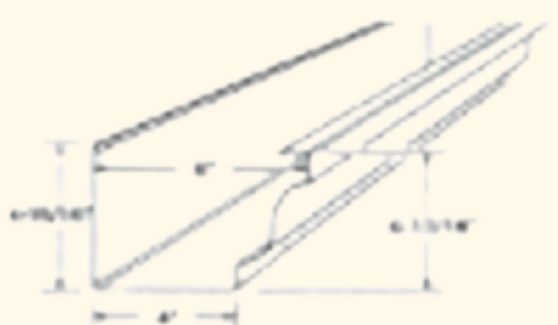
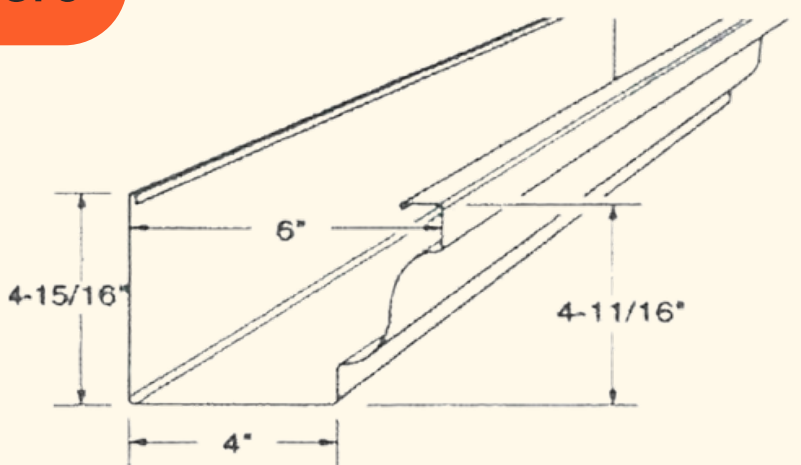
What is Gutter And Rain System?

A **Rain Gutter** is an exterior home feature that collects water during a storm and diverts it away from your property through downspouts. This helps ensure the water does not seep into your foundation and cause damage. Gutter systems sit horizontally under the edge of your roof and are typically constructed of aluminum to ensure durability and strength during severe weather conditions.

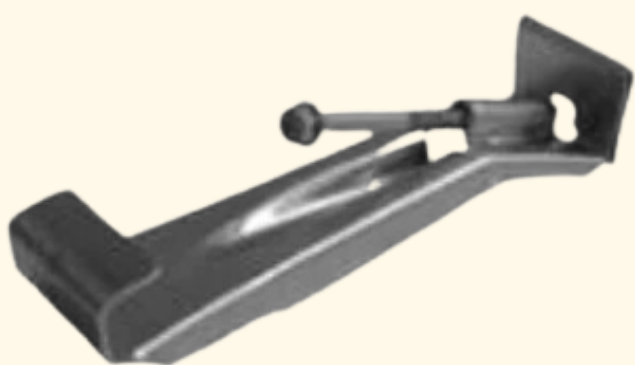
OUR OFFERINGS

K gutters / House gutters

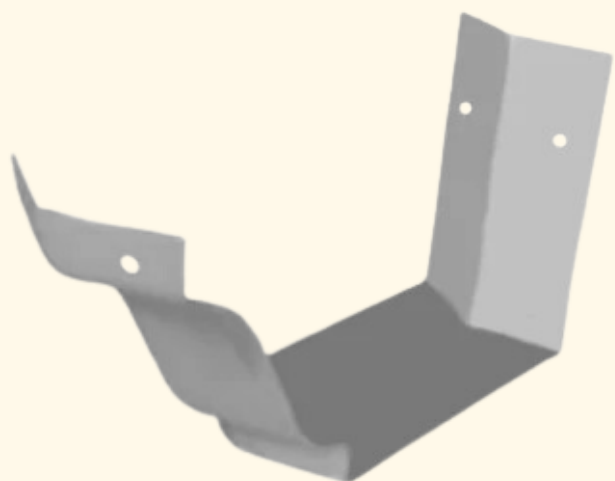
COLOR OPTIONS



COMPONENTS - Gutter Level

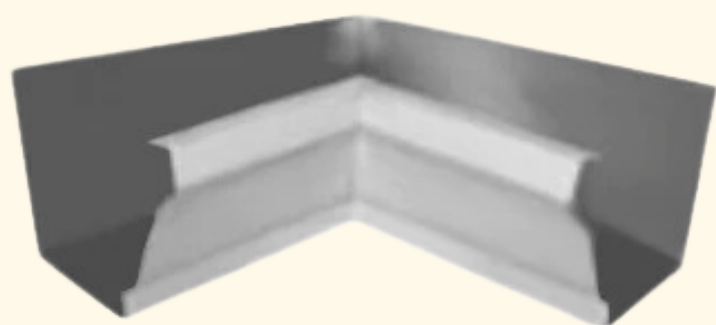


Gutter Hanger with Screw 6"



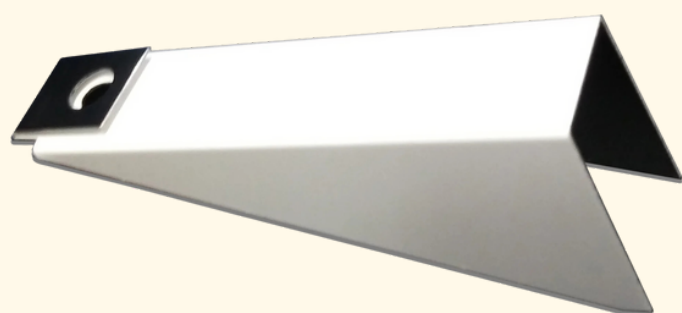
Outside Strip Miter 6" White

COLOR OPTIONS



Inside Miter 6" W

COLOR OPTIONS



Gutter Wedge for 5",6"



End Cap 6" Right Bronze

COLOR OPTIONS

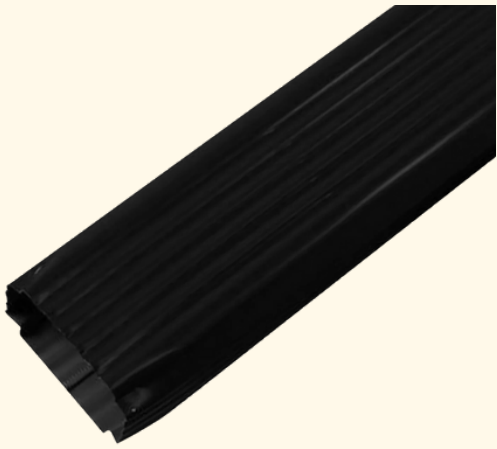


End Cap 6" Left Bronze

COLOR OPTIONS



COMPONENTS - Below Gutter



Downspout 3x4x10' Bronze

COLOR OPTIONS



3 X 4 A Elbow Bronze

COLOR OPTIONS



Drop Outlet 3 X 4 Metal



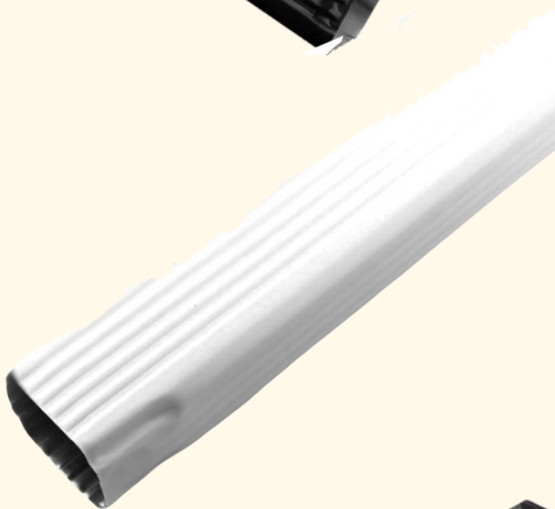
3 X 4 B Elbow Bronze

COLOR OPTIONS



2 X 3 B Elbow Bronze

COLOR OPTIONS



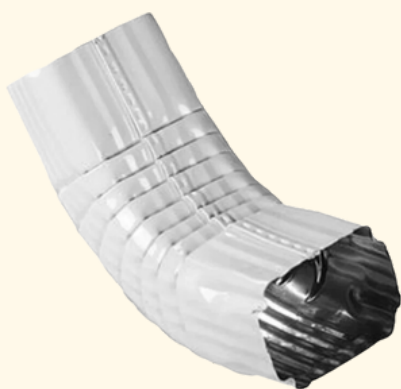
Downspout 2x3x10' White

COLOR OPTIONS



Downspout Strap Bronze

COLOR OPTIONS



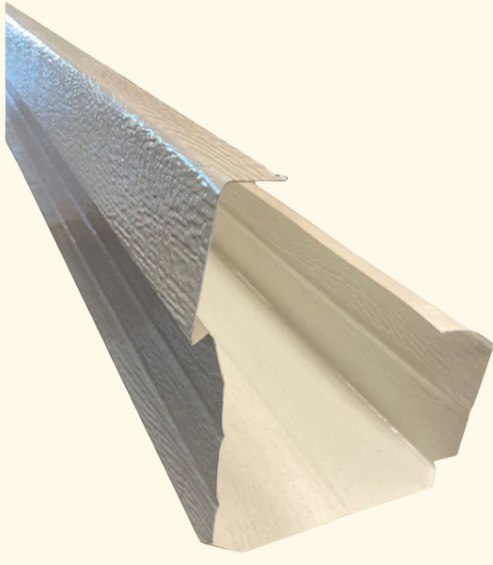
2 X 3 A Elbow White

COLOR OPTIONS



Drop Outlet 2 X 3 Metal

Pan gutters



Pan Gutter

COLOR OPTIONS



WHITE

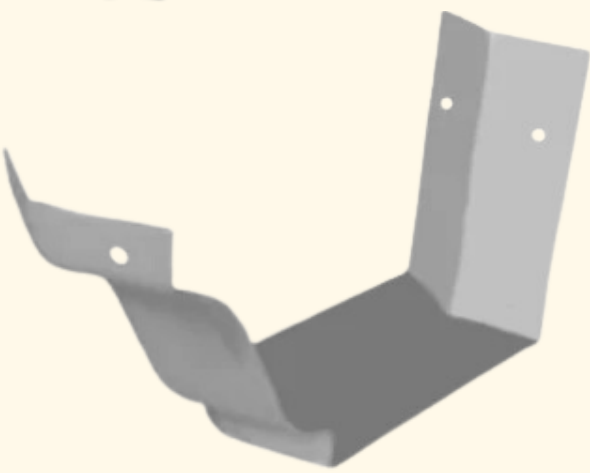


BRONZE

COMPONENTS - Gutter Level



Gutter Hanger with Screw 6"



Outside Strip Miter 6" White

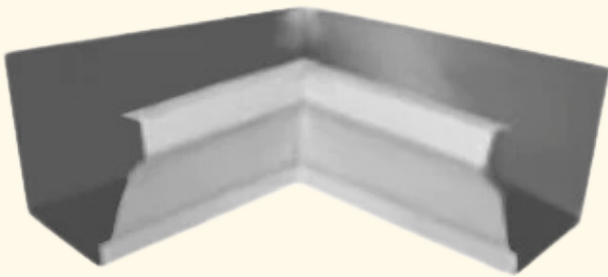
COLOR OPTIONS



WHITE



BRONZE



Inside Miter 6" W

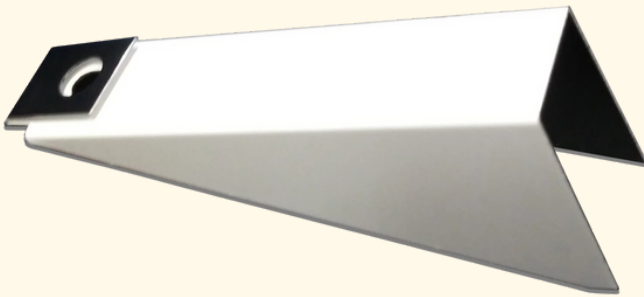
COLOR OPTIONS



WHITE



BRONZE



Gutter Wedge for 5",6"



End Cap 6" Right Bronze

COLOR OPTIONS



WHITE



BRONZE



End Cap 6" Left Bronze

COLOR OPTIONS

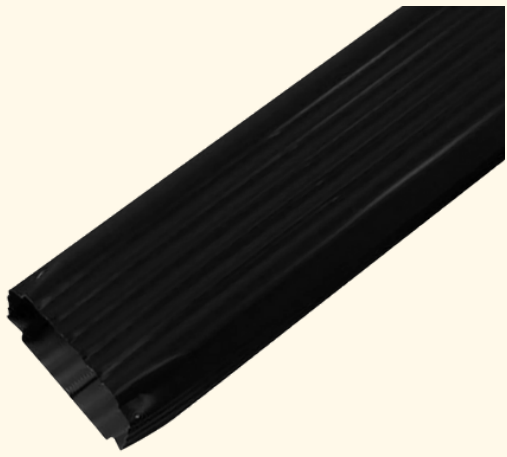


WHITE



BRONZE

COMPONENTS - Below Gutter



Downspout 3x4x10' Bronze

COLOR OPTIONS



A



3 X 4 A Elbow Bronze

COLOR OPTIONS



Drop Outlet 3 X 4 Metal

B



3 X 4 B Elbow Bronze

COLOR OPTIONS



B



2 X 3 B Elbow Bronze

COLOR OPTIONS



Downspout 2x3x10' White

COLOR OPTIONS

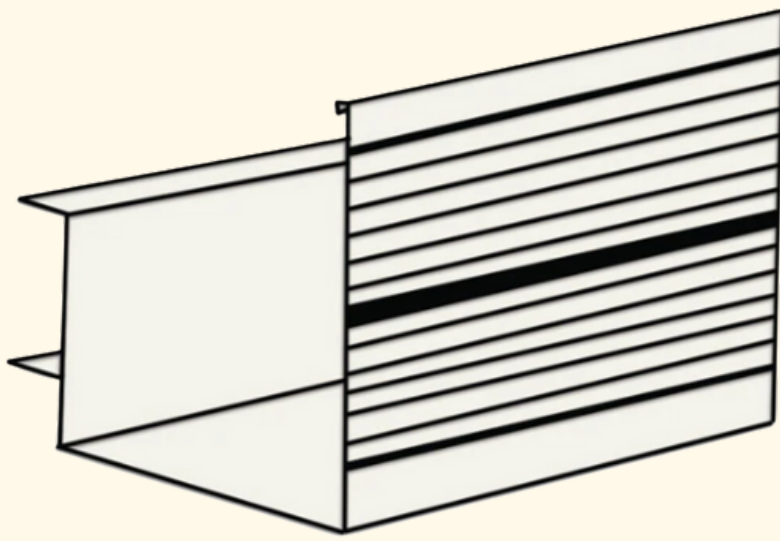


Downspout Strap Bronze

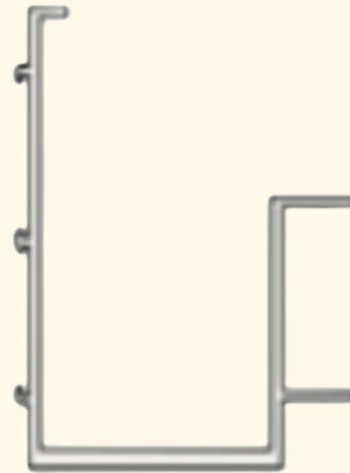
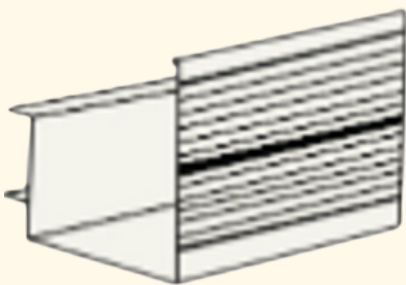
COLOR OPTIONS



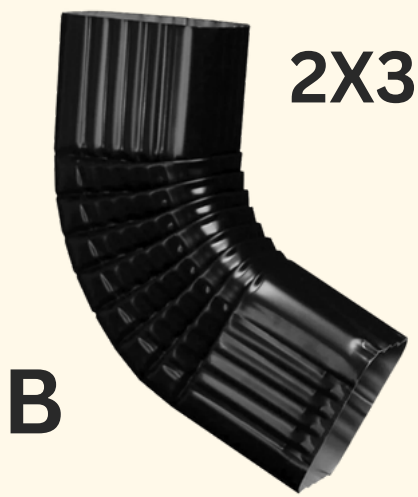
E gutters



COLOR OPTIONS

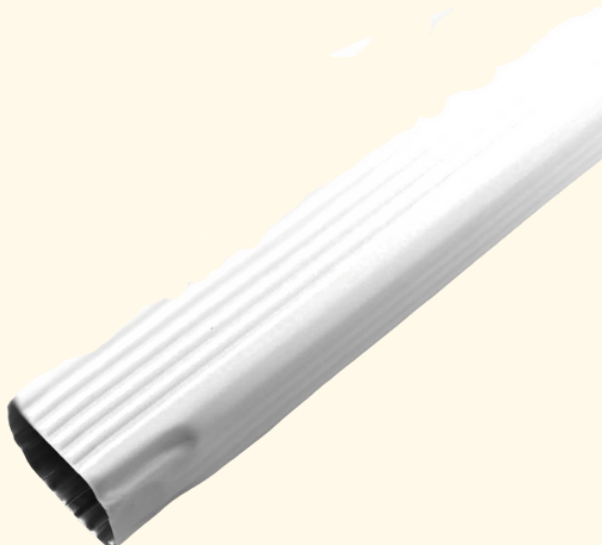


COMPONENTS



2 X 3 B Elbow Bronze

COLOR OPTIONS



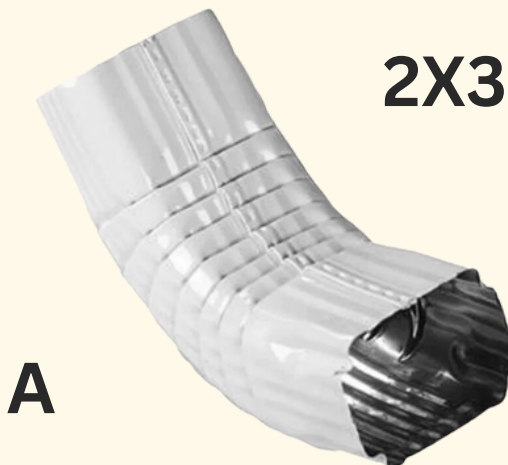
Downspout 2x3x10' White

COLOR OPTIONS



Downspout Strap Bronze

COLOR OPTIONS



2 X 3 A Elbow White

COLOR OPTIONS



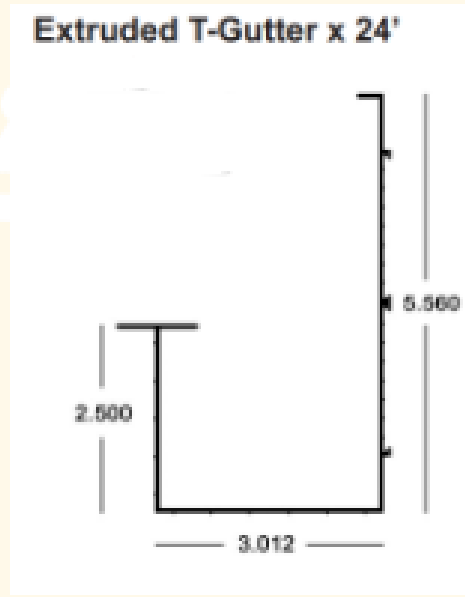
Drop Outlet 2 X 3 Metal

COLOR OPTIONS

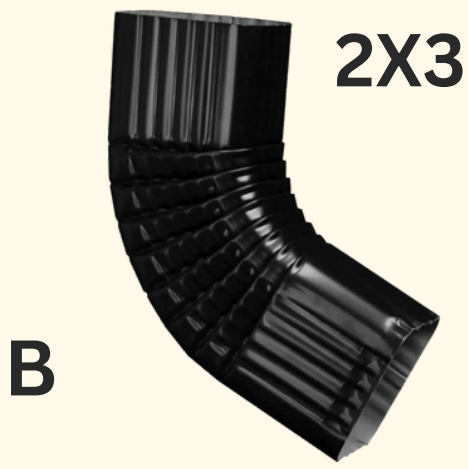


T gutters

T Gutter



COMPONENTS



2 X 3 B Elbow Bronze

COLOR OPTIONS



Downspout 2x3x10' White

COLOR OPTIONS



Downspout Strap Bronze

COLOR OPTIONS



2 X 3 A Elbow White

COLOR OPTIONS

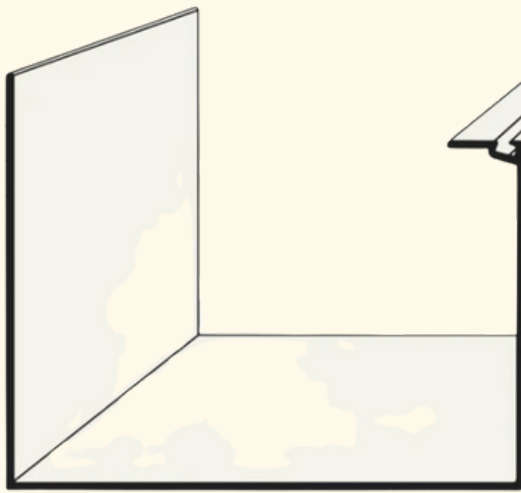


Drop Outlet 2 X 3 Metal

COLOR OPTIONS



5" Super gutter



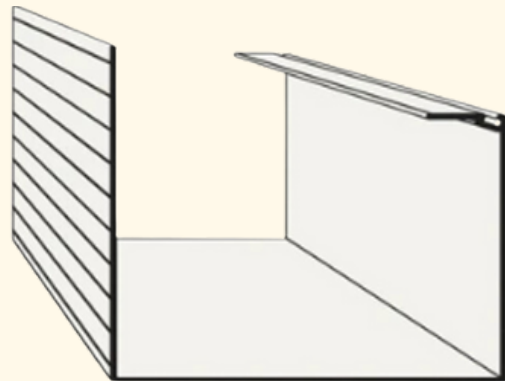
COLOR OPTIONS



WHITE



BRONZE



COMPONENTS

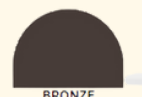


Downspout 2x3x10' White

COLOR OPTIONS



WHITE



BRONZE



3X4

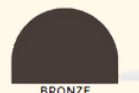
A

3 X 4 A Elbow Bronze

COLOR OPTIONS



WHITE



BRONZE



Drop Outlet 3 X 4 Metal



3X4

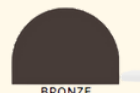
B

3 X 4 B Elbow Bronze

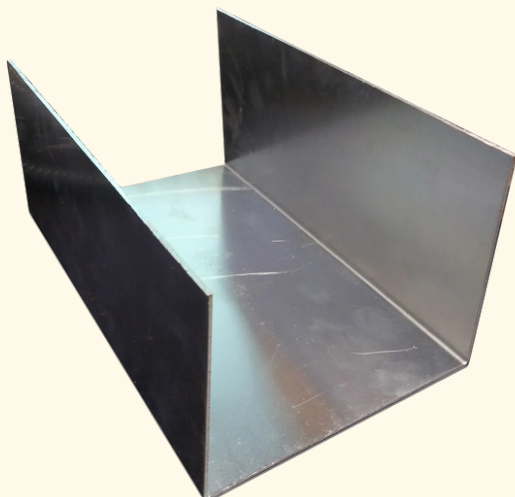
COLOR OPTIONS



WHITE



BRONZE



Super Gutter Splice 5"

End Cap 5" Super Gutter - White

COLOR OPTIONS

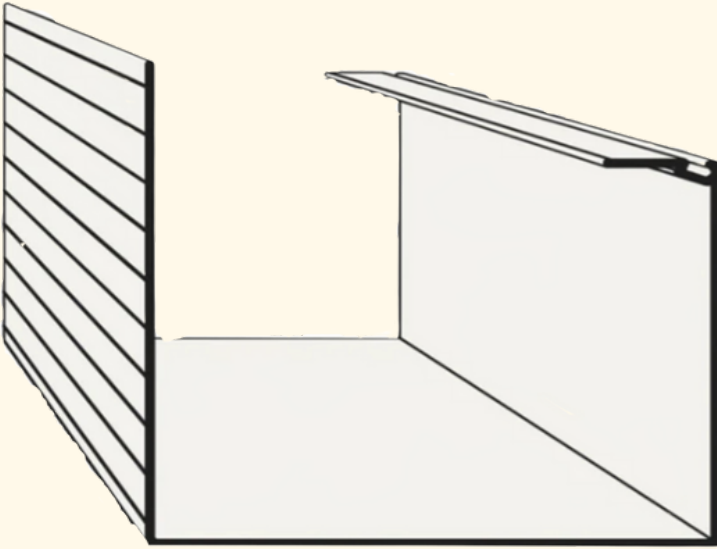


WHITE



BRONZE

7" Super gutter



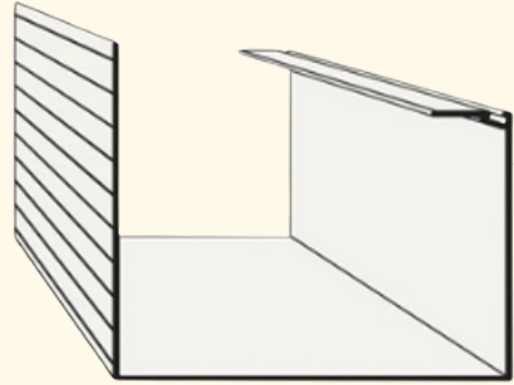
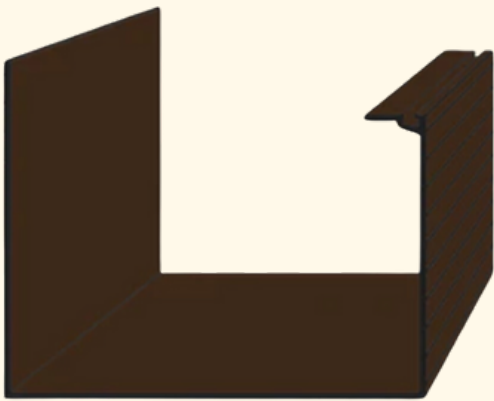
COLOR OPTIONS



WHITE



BRONZE



COMPONENTS



Downspout 2x3x10' White

COLOR OPTIONS



WHITE



BRONZE



3X4

A

3 X 4 A Elbow Bronze

COLOR OPTIONS



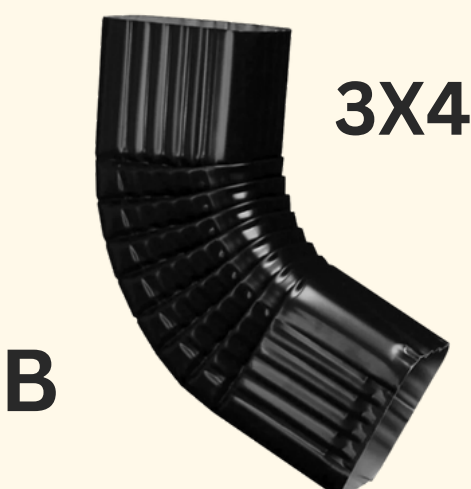
WHITE



BRONZE



Drop Outlet 3 X 4 Metal



3X4

B

3 X 4 B Elbow Bronze

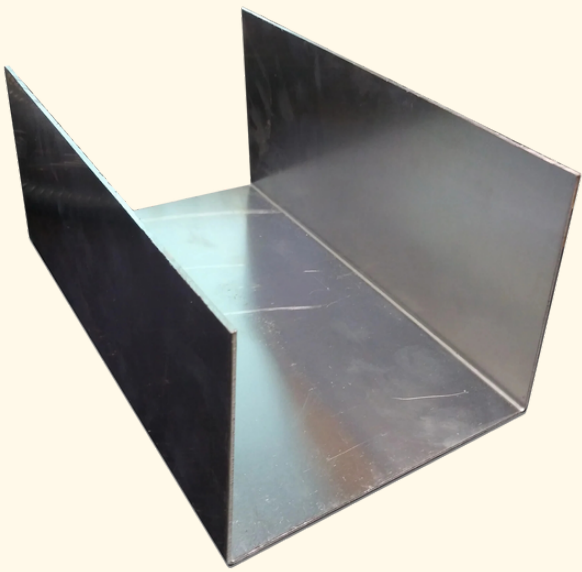
COLOR OPTIONS



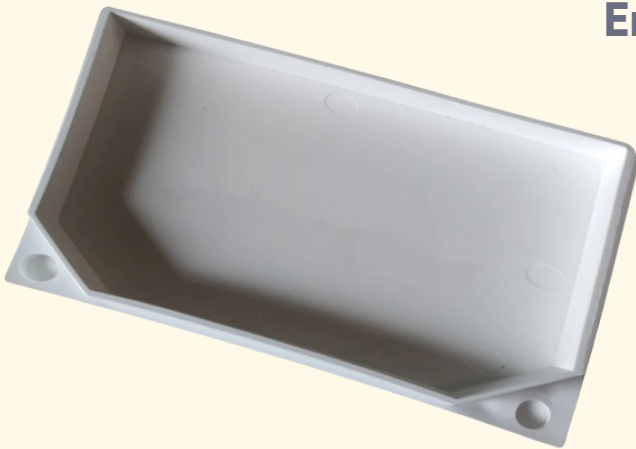
WHITE



BRONZE



Super Gutter Splice 5"



End Cap 7" Super Gutter - White

COLOR OPTIONS



WHITE



BRONZE

Why is Gutter and Rain System Important?

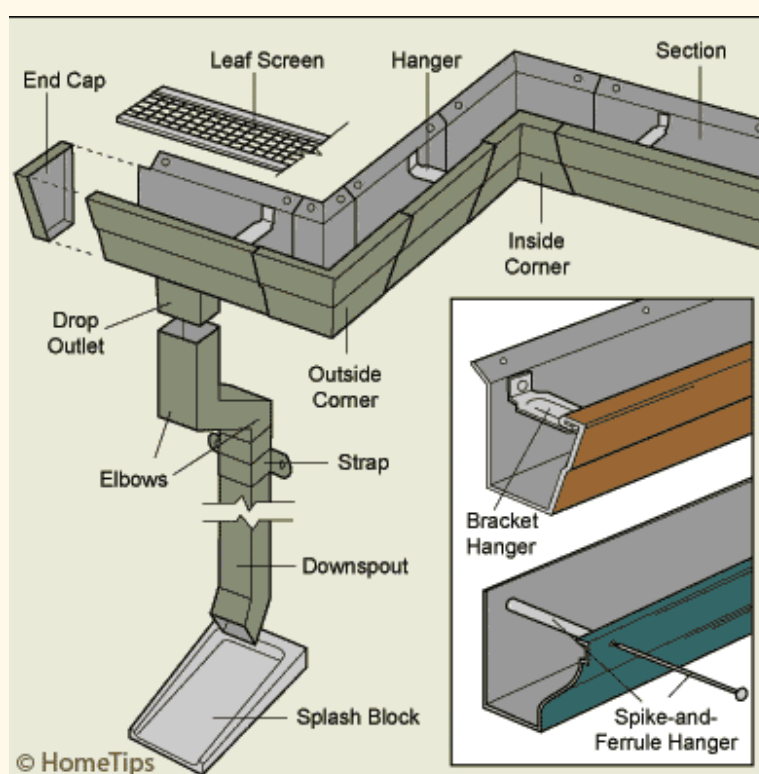
Your gutters are responsible for water management. During a storm, they effectively channel water flow from your roof, through the downspouts, and direct it to appropriate areas outside the home. Without a gutter system, your roof can pick up a bunch of leaves and other debris, causing water to stagnate and overflow. This can make your home vulnerable to rotting, rusting, and other damage.



Do-It-Yourself

How to Install Gutter And Rain System Safely

If you are planning to install Gutter and Rain System, there are several safety precautions to keep in mind. Always ensure that your ladder is stable and on solid ground before climbing to the roofline. Wear appropriate safety gear, such as a hard hat, gloves, and non-slip shoes. It is also essential to have someone else present while you are working on the roofline.



© HomeTips

Here are the steps to follow when installing Gutter And Rain System:

- Purchase needed materials.
- Place a chalk line across the fascia to create an appropriate angle toward the downspout end.
- Determine the length of the gutter by measuring the fascia.
- Apply gutter sealant to the end cap.
- Press the cap onto one end of the gutter.
- Using a crimper tool, secure the end cap to the gutter.
- Use tin snips and a hacksaw to cut the gutter to the appropriate measurements.
- Use a hole saw and hammer to cut out a round hole in the gutter for a downspout outlet.
- Administer gutter sealant to the flange of the downspout outlet.
- Screw the outlet to the hole in the gutter.
- For the time being, screw the gutter to the fascia. Make sure the gutter is approximately 2 inches below the chalk line.
- Set up hanging brackets on the gutter, arranging one in front of each rafter.
- Elevate the gutter to the chalk line.
- Screw through the fascia and into the end piece of the rafter to join together each bracket.
- Place two concrete pavers that are 2 inches thick on the ground directly underneath the downspout outlet.
- Position a rain barrel over the top of the concrete pavers.
- Use a hacksaw to incise and assemble the downspout and elbows.
- Screw the upper portion of the downspout to the downspout outlet poking out from the gutter.
- Use mounting straps to fasten the downspout to the house.
- Install a diverter in the downspout, arranging it even with the top of the rain barrel.
- Attach a small length of downspout to the underside of the diverter.
- Hook up the diverter's flexible hose to the port on the side of the rain barrel.

FAQs

About Gutter And Rain System Installation

1. What materials can be used for Gutter And Rain System installation?

The typical materials that rain gutters are made out of are aluminum, stainless steel, galvanized steel, copper, vinyl, or zinc.

2. What is the best way to ensure the safety of the installer during the installation process?

Since work falls are the cause of the most serious roofing and gutter accidents, fall protection should be in-place for employees working at dangerous heights. The three major methods of fall protection include guard rails, safety nets, and personal fall arrest systems.

3. Can I install Gutter And Rain on my own?

You can install your gutters yourself, as long as you have the right tools and proper assistance. Gutter installation requires physical strength to juggle large metal pieces, and certain skill to work on top of a ladder. You also need to define several measurements in advance, like your roof pitch and the length of the gutter run.