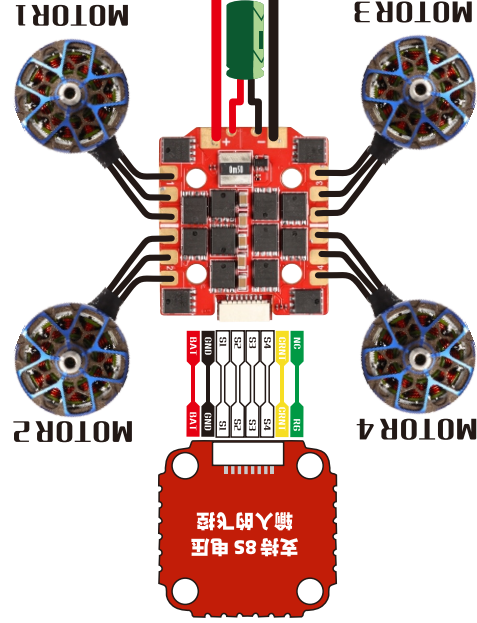


16cm

12cm



XT30/XT60  
3S-8S LIPO INPUT



接线图

- 主要特点**
1. 高性能硬件, 额定持续50A, 峰值60A
  2. 大MOS小尺寸, 20x20安装孔位, 是竞速花飞电调首选
  3. 全新结构控制电路+输出电路
  4. 刷新率, 响应更快
  5. 加大焊盘, 焊接随心所欲
- 基本参数**
- 品牌名称: HGLRC  
型号: Zeus 50A pro 4in1 电调  
输入电压: 3-8S Lipo  
固件: BL\_S (F-H-40)  
持续电流: 50A  
峰值电流: 60A (10秒)  
支持协议: DShot600 / 300/150 / Oneshot125 / 42, MultiShot  
电调尺寸: 41x36mm  
安装孔位: 20x20mm, M3  
重量: 15.5g

**ZEUS 50A PRO 4IN1 ESC**  
3-8S BL-S

**ZEUS 50A PRO 4IN1 ESC PRODUCT MANUAL**  
3-8S BL-S

**BASIC PARAMETERS**

- Brand Name:** HGLRC  
**Item Name:** Zeus 50A pro 4in1 ESC  
**Input Voltage:** 3-8S Lipo  
**ESC firmware:** BL\_S (F-H-40)  
**Constant Current:** 50A  
**Peak Current:** 60A (10s)  
**Supported Protocols:** DShot600 / 300/150 / Oneshot125 / 42, MultiShot  
**Size:** 41x36mm  
**Installing Hole:** 20x20mm, M3  
**Weight:** 15.5g

**MAIN FEATURES**

1. High-performance hardware, stable 50A, peak 60A
2. Large MOSFET small size board, 20x20 mounting holes, is the first choice for racing, freestyle
3. New structure for control circuit and output circuit

