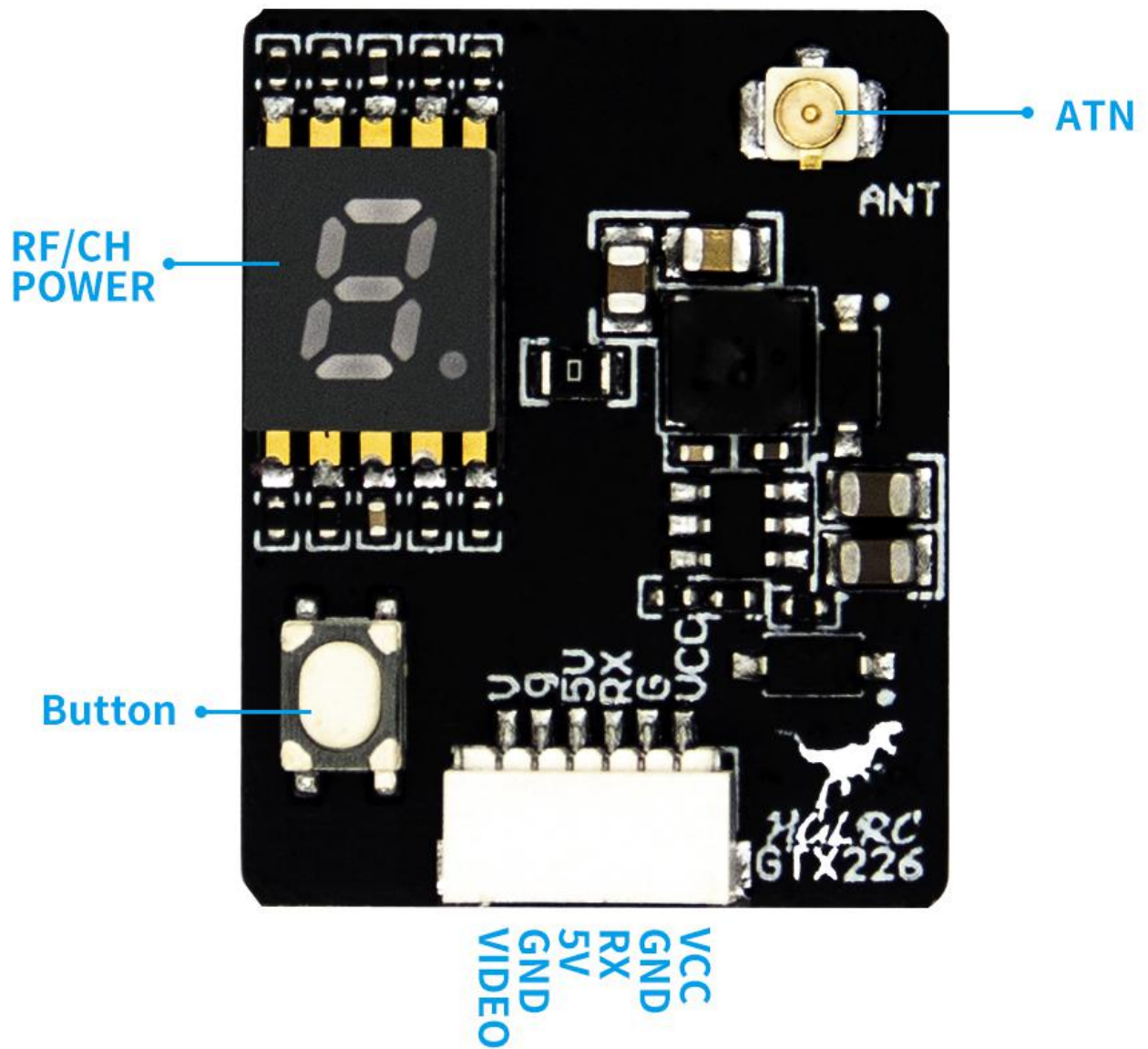
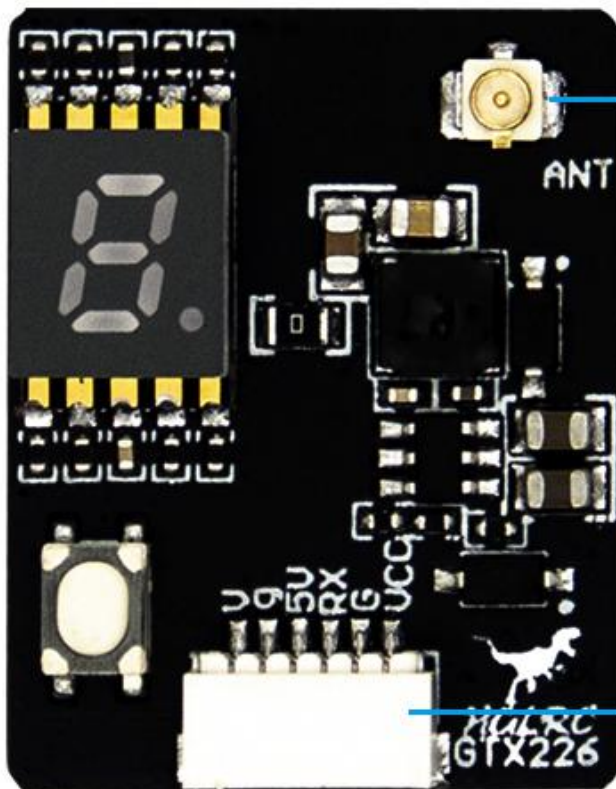


HGLRC GTX226.V2 VTX

Manual



Modulate	Wideband FM Modulate			
Video Formant	NTSC/PAL			
Characteristics	Value			Units
	Min.	Typ.	Max.	
1 Output Impedance	--	50	--	Ohm
2 Output Power	25.5	26	26.5	dBm
3 VCC-IN	7.0	12	26	V
4 Supply current @12V@400mW	190	200	230	mA
5 Video Bandwidth	0	--	8	MHz
6 Video Input Level	0.8	1.0	1.2	Vp-p
7 Weight	--	6	--	g
8 Antenna Connector	IPX			
9 Dimensions(L*W*H)	20mm*25.5mm*8.5mm			





HGLRC
GTX226.V2

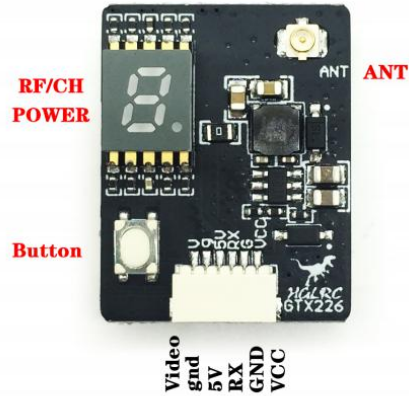
GTX226.V2 VTX Summary

GTX226.V2 VTX is simulated 5.8G ISM band transmission with stable output power, long transmission distance and strong power filter. It can ensure that the image has no snowflake, no stripes under the maximum throttle situation. Meanwhile, GTX226.V2 VTX has remote frequency point control of remote control OSD interface, does not interfere with fellows when powered on, and support 8 people above flying at the same time super function.

GTX226.V2 Product Description

Features:

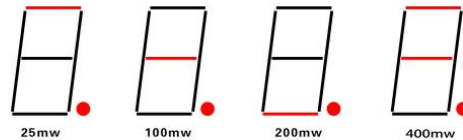
- Stable output power, long-distance transmission: $\geq 0.5\text{km}-25\text{mW}$, $\geq 0.8\text{km}-100\text{mW}$, $\geq 1\text{km}-200\text{m}$, $\geq 1.5\text{km}-400\text{mW}$ (with original antenna);
- 4 gears transmit power: 25mW/100mW/200mW/400mW; 48 frequency points output, and has R group, L group, 8 competition frequency using at the same time without interference;
- Fast frequency lock, does not interfere with fellows when powered on;
- With self-test output power function;
- Full format video format: NTSC / PAL;
- Wide input voltage range, low power consumption: 7V~26V, +12V/240mA-400mW;
- Small size: 20mm×25.5mm×8.5mm;
- Light weight: $\leq 6\text{g}$ (antennas not included);



Functional Schematic

Frequency and power control method:

- Betaflight firmware;
- Button frequency control: Short press once to change channel number CH (CH1-CH8), long press for 2 seconds and then short press to change frequency group FR (A-F);
- Button power control: Long press button for 6 seconds and then short press button to change power level 25mW / 100mW / 200mW / 400mW; (please see details as the picture shown on the right: Power switching instruction)
- Power instructions: (check details below)



HGLRC
GTX226.V2

	25mW	100mW	200mW	400mW	0mW/Fault
Power indicator	1 flash Stop 3 seconds	2 flash Stop 3 seconds	3 flash Stop 3 seconds	4 flash Stop 3 seconds	Always Light

Precautions for use:

- Make sure output terminal is installed antenna before it is powered;
- Input voltage must be within the specified range (7V~26V) and keep + - right;
- Please choose antenna with good VSWR and DB if you replace, to get far transmission distance;
- Pay attention to static electricity protection during transportation and installation.

	CH1	CH2	CH3	CH4	CH5	CH6	CH7	CH8
A	5865	5845	5825	5805	5785	5765	5745	5725
b	5733	5752	5771	5790	5809	5828	5847	5866
E	5705	5685	5665	5645	5885	5905	5925	5945
F	5740	5760	5780	5800	5820	5840	5860	5880
r	5658	5695	5732	5769	5806	5843	5880	5917
L	5362	5399	5436	5473	5510	5547	5584	5621

Frequency table:

Frequency and channel frequency table: