



Forward 45A 4in1 MINI ESC

Manual



Contents

Product Specifications.....	1
Interface Description.....	2
Upgrade ESC firmware.....	3
Troubleshooting.....	4

.....

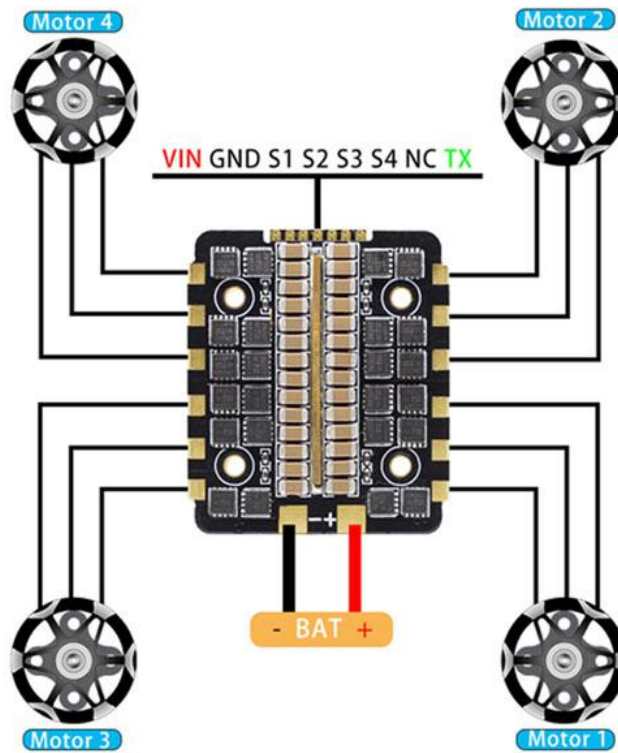
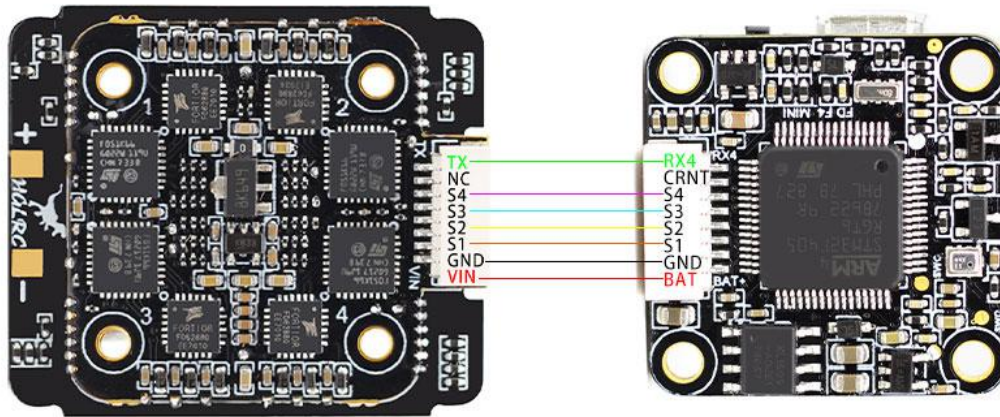
Package Included

Forward 45A 4in1 MINI ESC*1	Accessory Bag*1
-----------------------------	-----------------

1. Product Specifications

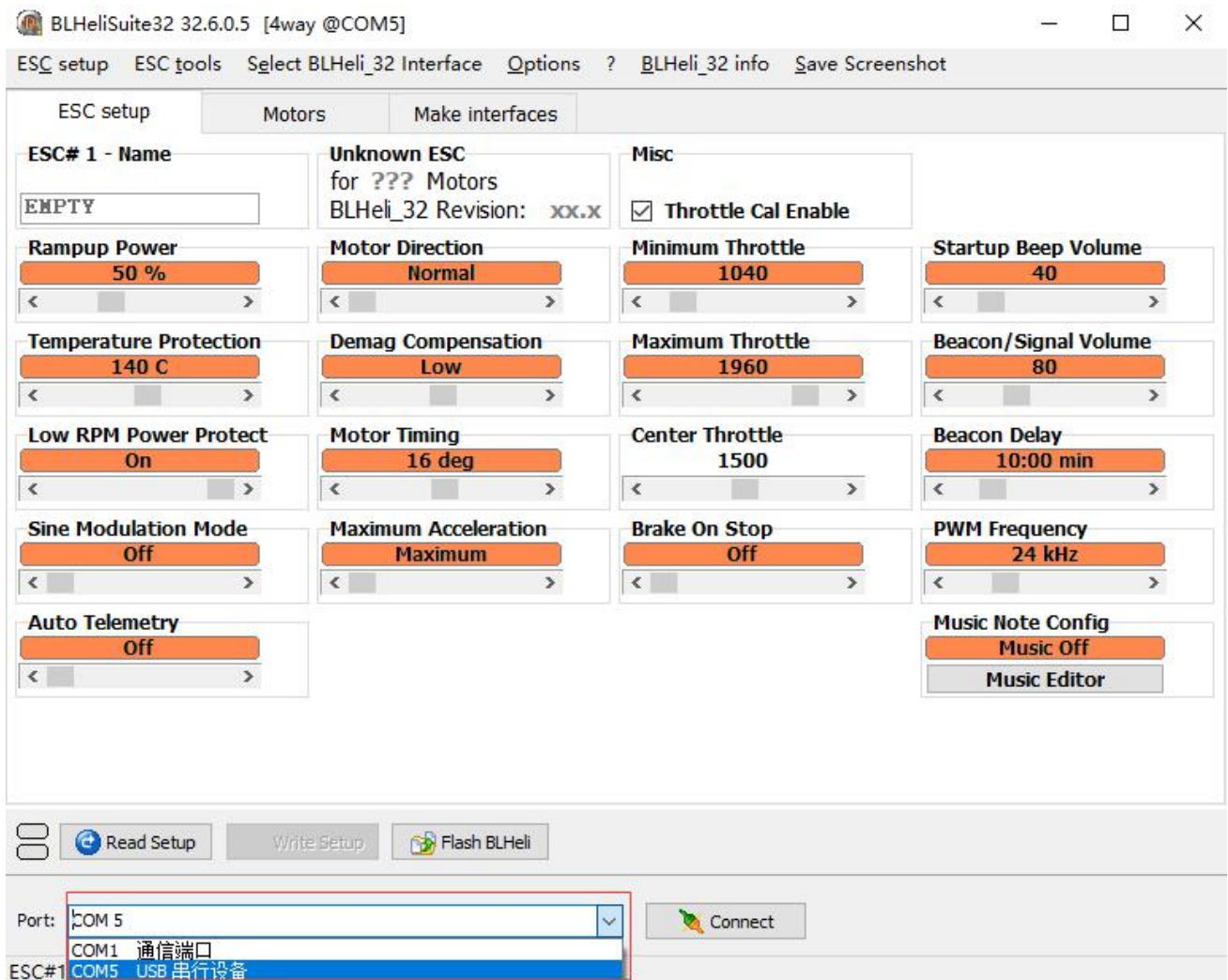
Product parameters	
Model	Forward 45A 4in1 MINI ESC
Input Voltage	2-6S Lipo battery
CPU	STM32F051
Continuous current	45A-4S/35A-6S
Peak Current	55A (5s)
Firmware	BLHELI_32
MOS Tube	TOP QUALITY MOSFET
BEC Output	NO
Protocol:	DSHOT1200/600/300/150/ Oneshot125/42,MultiShotDa mped mode,forward and reverse
Size	36.5X31.7mm board, 20.0mm mounting holes (M2)
Weight	10.8g


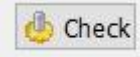

2. Interface Description

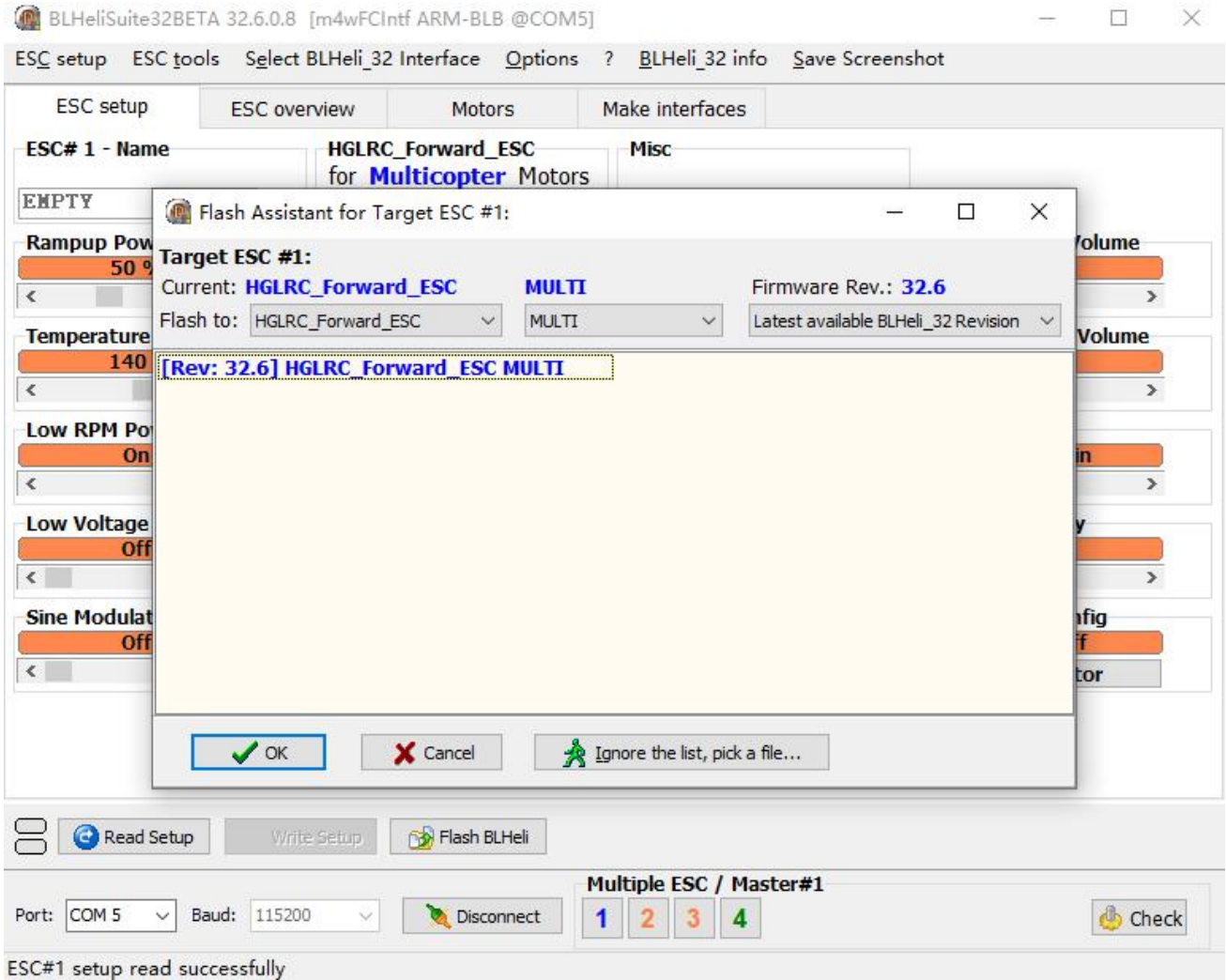


3. Upgrade ESC firmware

1. First, the flight controller is connected to the ESC and then opened (BLHeliSuite32) for connection. Select com serial port (Different computer COM)



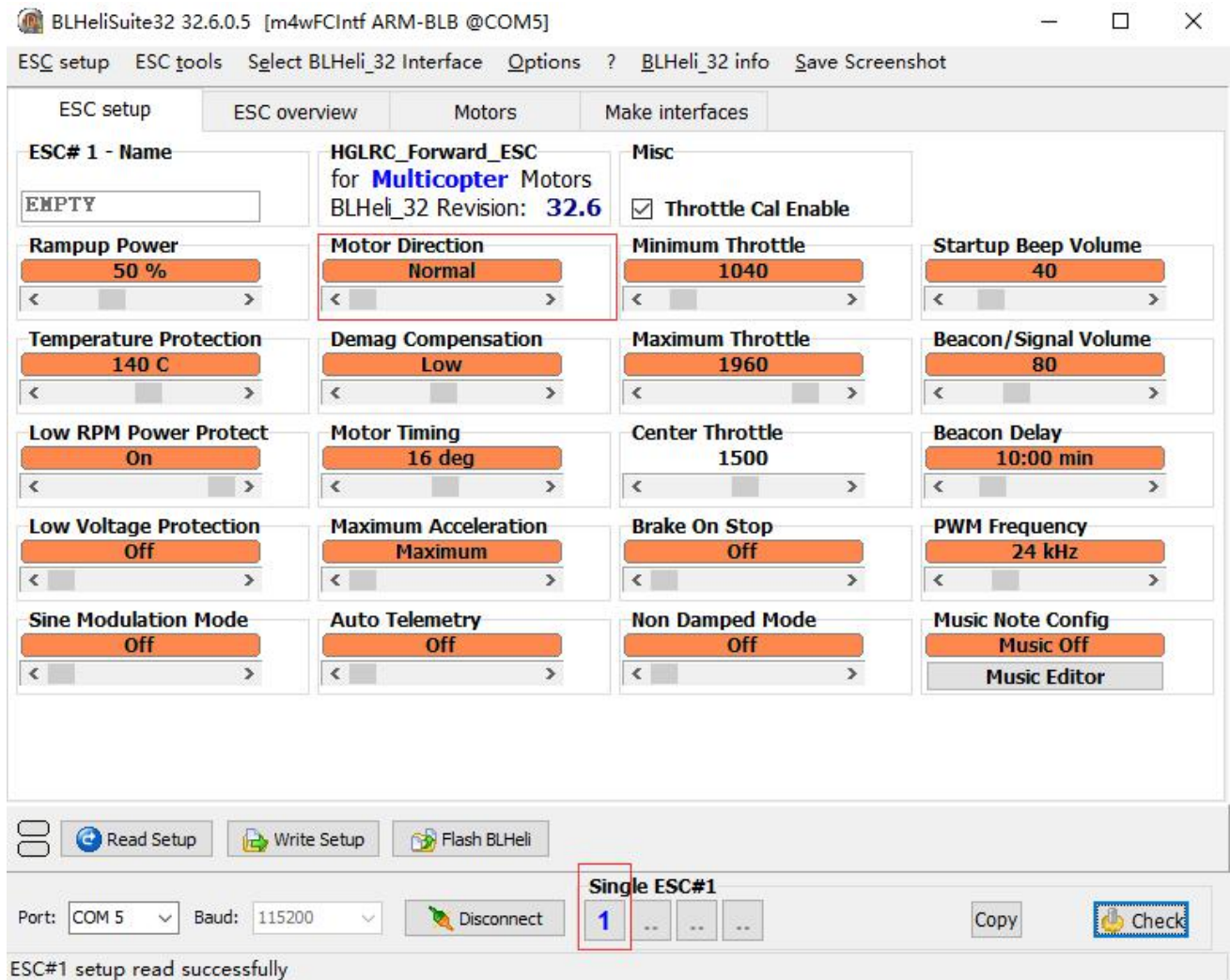
2. click the link . Plug in the battery and click . The ESC version number appears. Then Click  ESC upgrade.



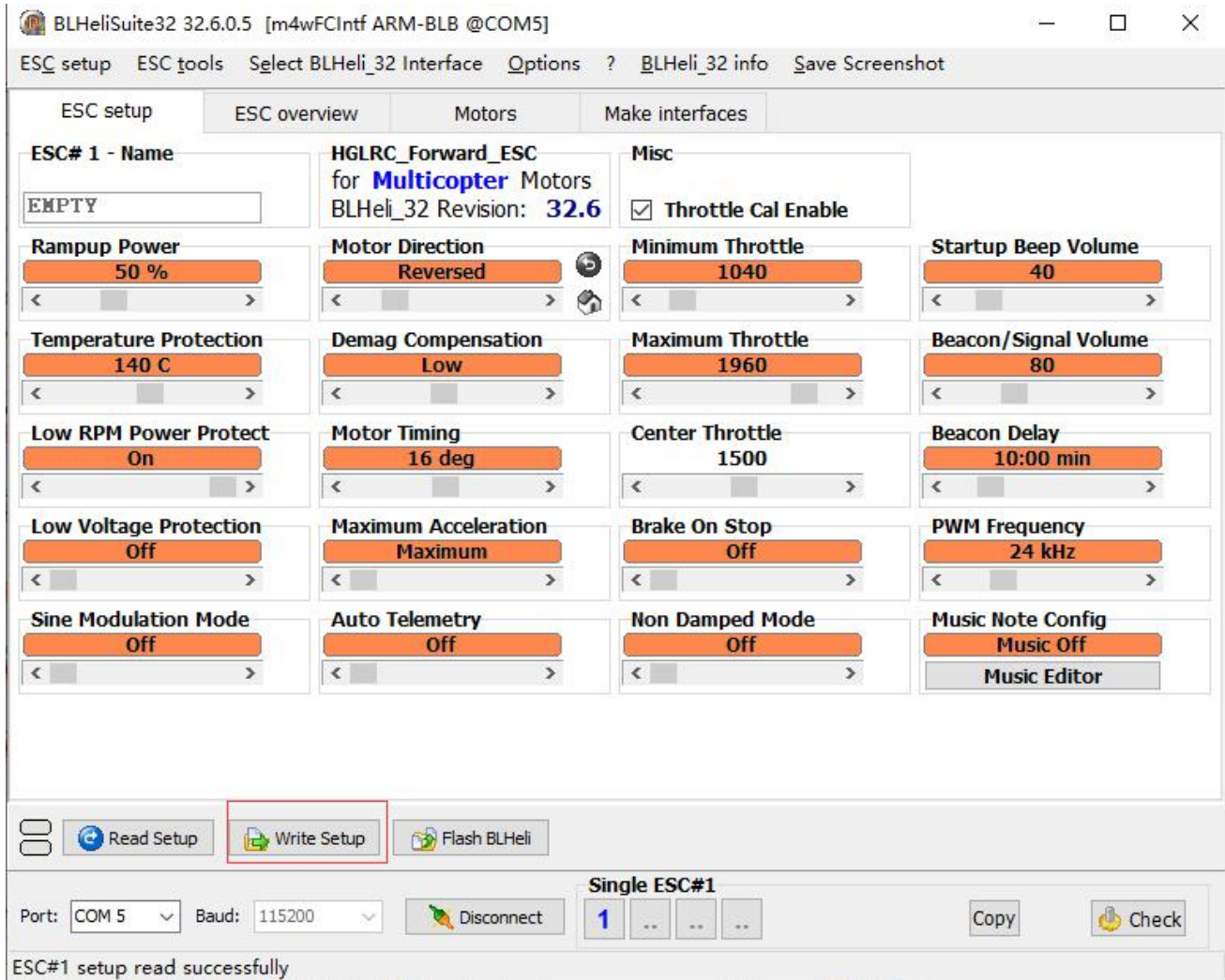
The screenshot shows the BLHeliSuite32BETA 32.6.0.8 software interface. The main window displays ESC setup options for 'ESC# 1 - Name' (HGLRC_Forward_ESC) and 'Motors' (MULTICOPTER). A 'Flash Assistant for Target ESC #1' dialog box is open, showing the current target ESC name and motor type. The dialog lists available firmware revisions, with '[Rev: 32.6] HGLRC_Forward_ESC MULTI' selected. The dialog has 'OK', 'Cancel', and 'Ignore the list, pick a file...' buttons. The main window also shows a 'Flash BLHeli' button and a status bar indicating 'ESC#1 setup read successfully'.

3. Change motor steering

1. Open first ([BLHeliSuite32](#)) to connect. Find the ESC model that needs to change direction (right mouse button to select ESC). Remembering to save after modification. Remember to modify and click ([Write Setup](#)) to save



The screenshot shows the BLHeliSuite32 software interface. The title bar indicates the version is 32.6.0.5 and it is connected to an m4wFCIntf ARM-BLB @COM5. The main window is titled "ESC setup" and has several tabs: "ESC setup", "ESC overview", "Motors", and "Make interfaces". The "ESC setup" tab is active, showing a grid of settings for "ESC# 1 - Name" (EMPTY) and "HGLRC_Forward_ESC for Multicopter Motors BLHeli_32 Revision: 32.6". The "Motor Direction" is set to "Normal" and is highlighted with a red box. Other settings include "Throttle Cal Enable" (checked), "Minimum Throttle" (1040), "Maximum Throttle" (1960), "Center Throttle" (1500), "Brake On Stop" (Off), "Non Damped Mode" (Off), "Rampup Power" (50%), "Temperature Protection" (140 C), "Demag Compensation" (Low), "Motor Timing" (16 deg), "Maximum Acceleration" (Maximum), "Auto Telemetry" (Off), "Low RPM Power Protect" (On), "Low Voltage Protection" (Off), "Sine Modulation Mode" (Off), "Startup Beep Volume" (40), "Beacon/Signal Volume" (80), "Beacon Delay" (10:00 min), "PWM Frequency" (24 kHz), and "Music Note Config" (Music Off). At the bottom, there are buttons for "Read Setup", "Write Setup", and "Flash BLHeli". The "Single ESC#1" dropdown is set to "1" and is also highlighted with a red box. The status bar at the bottom shows "ESC#1 setup read successfully".



BLHeliSuite32 32.6.0.5 [m4wFCIntf ARM-BLB @COM5]

ESC setup ESC overview Motors Make interfaces

ESC# 1 - Name: EMPTY

HGLRC_Forward_ESC for Multicopter Motors
BLHeli_32 Revision: 32.6

Misc: Throttle Cal Enable

Rampup Power: 50 %

Motor Direction: Reversed

Minimum Throttle: 1040

Startup Beep Volume: 40

Temperature Protection: 140 C

Demag Compensation: Low

Maximum Throttle: 1960

Beacon/Signal Volume: 80

Low RPM Power Protect: On

Motor Timing: 16 deg

Center Throttle: 1500

Beacon Delay: 10:00 min

Low Voltage Protection: Off

Maximum Acceleration: Maximum

Brake On Stop: Off

PWM Frequency: 24 kHz

Sine Modulation Mode: Off

Auto Telemetry: Off

Non Damped Mode: Off

Music Note Config: Music Off

Music Editor

Read Setup Write Setup Flash BLHeli

Port: COM 5 Baud: 115200 Disconnect Single ESC#1 1 Copy Check

ESC#1 setup read successfully

4. Troubleshooting

Warning:

Please read the cautions as follows, otherwise stability of your flight controller cannot be ensured, your flight controller will even get damaged.

- Keep focus on the polarity. Check carefully before power supply.
- Cut off the power when you connect, plug and pull anything.

after sales question:

1. After receiving the goods, it is found that the product can not be used normally. If the return to the factory is a quality problem, the repair service will be provided free of charge.
2. If the product is damaged due to improper operation, the repair service may be provided under the condition that the inspection can be repaired.
3. For domestic customers, please contact the after-sales service personnel. For overseas customers, please contact the official website for after-sales service.

Product daily problems:

1. The ESC does not pass the self-test:

Check if the ESC protocol is correct.

2. Connect BLHeliSuite32 software ESC does not recognize:

1. Please check if the ESC connection flight control cable is loose.
2. Change the USB cable test or change the computer USB socket test